

<b>Flight Procedure Tracking Form</b>		<b>Action:</b> FLIGHT CHECK	<b>Task Type:</b> IAP	<b>Date Open:</b> 07/14/2015	<b>Task #:</b> 2015071434933901003	<b>Request #:</b> 20150714349339
<b>Procedure:</b> RNAV (GPS) RWY 8 AMDT 4			<b>Airport ID:</b> PAIL	<b>Airport:</b> ILIAMNA	<b>Reimbursable #:</b> NO	
<b>City:</b> ILIAMNA	<b>ST:</b> AK	<b>GPS #:</b>	<b>Estimated Chart Date:</b> 03/29/2018		<b>FICO #:</b>	
<b>Fac ID:</b> N/A		<b>Fac. Type:</b>			<b>Specialist:</b> STEVEN OWNBEY	
<b>Procedure Review</b>						
	<b>Rec'd</b>	<b>Rel'd</b>	<b>Full Name</b>	<b>Comments</b>		
<b>Lead:</b>	09/28/2017	11/27/2017	BEV L BORDY	<div>QUALITY 10 CHECKED</div>		
<b>QA:</b>	11/27/2017					
<b>Liaison:</b>						
<b>Procedure Comments:</b> ENROUTE-NON						
				<b>Remark Type:</b> INFORMATION		
<div>ASSIGNED MAG VAR: PAIL: OLD 17E- NEW 14E PENDING DATA USED CONTACT: BEVERLY BORDY, (405) 954-8293 OR ALLEN WILL, (405) 954-610</div> <div>ARI SAVED 2/14/18</div>						

# OLD FIG

ILIAMNA, ALASKA

AL-1251 (FAA)

17005

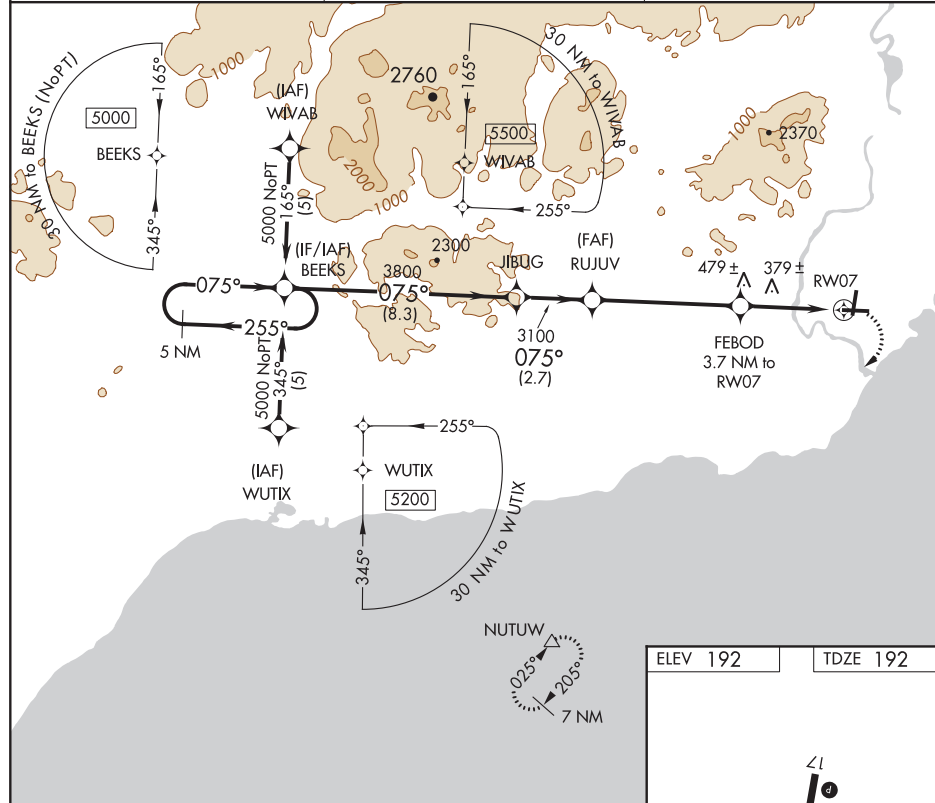
APP CRS <b>075°</b>	Rwy Idg <b>5086</b>
	TDZE <b>192</b>
	Apt Elev <b>192</b>

## RNAV (GPS) RWY 7 ILIAMNA (ILI) (PAIL)

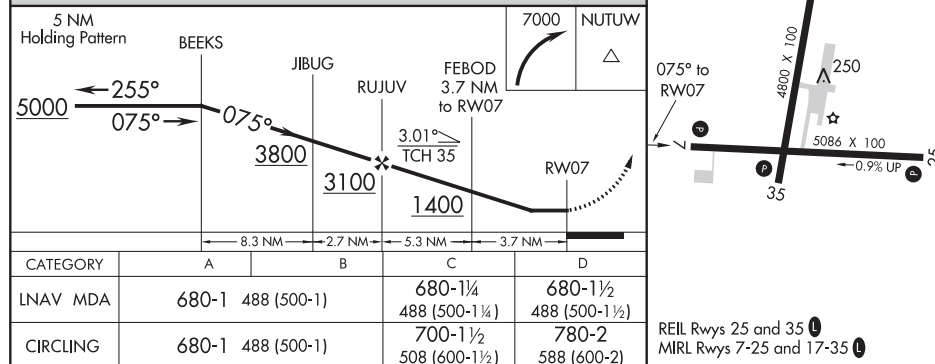
-13°C DME/DME RNP- 0.3 NA. Visibility reduction by helicopters NA.	MISSED APPROACH: Climbing right turn to 7000 direct NUTUW and hold, continue climb-in-hold 7000.
--	---

AFIS <b>134.95</b>	ANCHORAGE CENTER <b>118.8</b>	ILIAMNA RADIO <b>123.6 (CTAF) 0</b>
-----------------------	----------------------------------	--

AK, 07 DEC 2017 to 01 FEB 2018



AK, 07 DEC 2017 to 01 FEB 2018

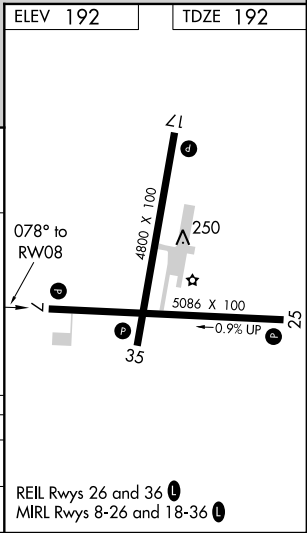
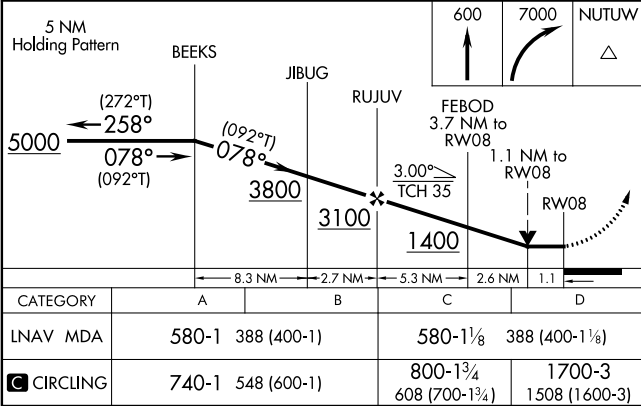
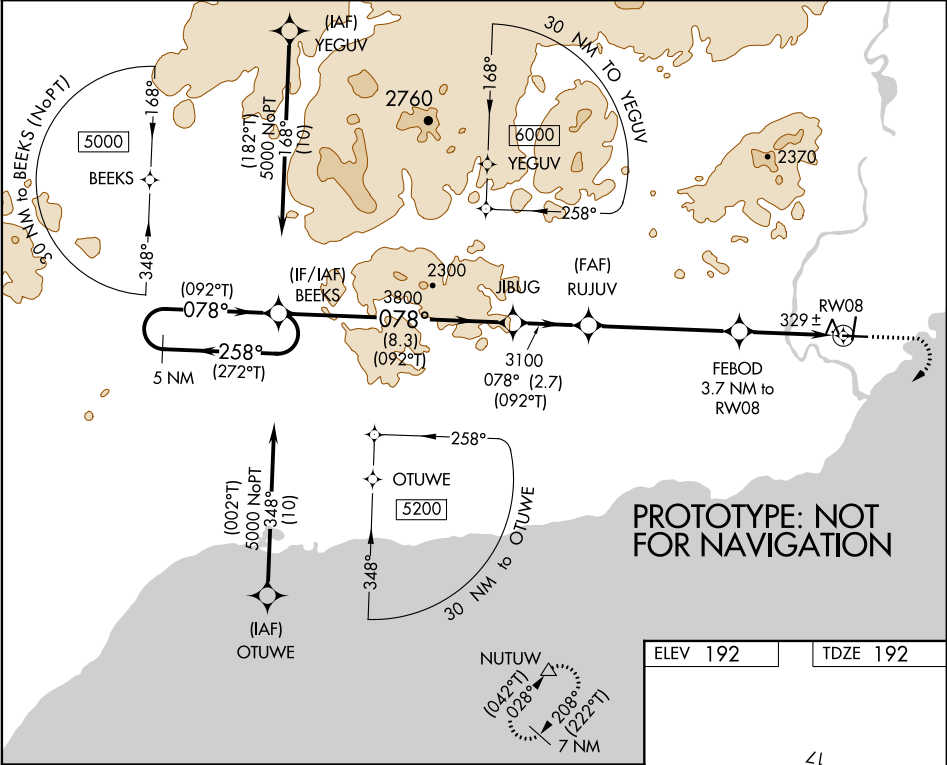


APP CRS	Rwy Idg	5086
078°	TDZE	192
	Apt Elev	192

RNAV (GPS) RWY 8  
ILIAMNA (ILI) (PAIL)

When local altimeter setting not received, procedure NA.	MISSED APPROACH: Climb to 600, then climbing right turn to 7000 direct NUTUW and hold, continue climb-in-hold 7000.
Rwy 8 helicopter visibility reduction below 3/4 SM NA.	
DME/DME RNP- 0.3 NA.	

AFIS 134.95	ANCHORAGE CENTER 118.8	ILIAMNA RADIO 123.6 (CTAF)
----------------	---------------------------	-------------------------------



155°0'0"W

59°45'0"N

FINAL 7:1 AAO  
1050

## STEP 7:1 AAO 550

### 13. LNAV AAO 804

## 14. LNAV STEP TREE 329

## 17. MISS AAO 440

PAIL, ILIAMNA  
ILIAMNA, ALASKA  
RNAV (GPS) RWY 8  
1:100000 SCALE

KPAIL  
Transverse Mercator  
Scale 1:100000



21. CIRC CAT C  
TREE 481

20. CIRC CAT B  
TREE 437

19. CIRC CAT A  
TREE 429

22. CIRC CAT D  
AAO 1400

14. LNAV STEP  
TREE 329

KPAIL  
Transverse Mercator  
Scale 1:100000

PAIL, ILIAMNA  
ILIAMNA, ALASKA  
RNAV (GPS) RWY 8  
1:100000 SCALE

21. CIRC CAT C  
TREE 481

20. CIRC CAT B  
TREE 437

19. CIRC CAT A  
TREE 429

22. CIRC CAT D  
AAO 1400

14. LNAV STEP  
TREE 329

KPAIL  
Transverse Mercator  
Scale 1:100000

PAIL, ILIAMNA  
ILIAMNA, ALASKA  
RNAV (GPS) RWY 8  
1:100000 SCALE

21. CIRC CAT C  
TREE 481

20. CIRC CAT B  
TREE 437

19. CIRC CAT A  
TREE 429

22. CIRC CAT D  
AAO 1400

14. LNAV STEP  
TREE 329

KPAIL  
Transverse Mercator  
Scale 1:100000

PAIL, ILIAMNA  
ILIAMNA, ALASKA  
RNAV (GPS) RWY 8  
1:100000 SCALE

21. CIRC CAT C  
TREE 481

20. CIRC CAT B  
TREE 437

19. CIRC CAT A  
TREE 429

22. CIRC CAT D  
AAO 1400

14. LNAV STEP  
TREE 329

KPAIL  
Transverse Mercator  
Scale 1:100000

PAIL, ILIAMNA  
ILIAMNA, ALASKA  
RNAV (GPS) RWY 8  
1:100000 SCALE

21. CIRC CAT C  
TREE 481

20. CIRC CAT B  
TREE 437

19. CIRC CAT A  
TREE 429

22. CIRC CAT D  
AAO 1400

14. LNAV STEP  
TREE 329

KPAIL  
Transverse Mercator  
Scale 1:100000

PAIL, ILIAMNA  
ILIAMNA, ALASKA  
RNAV (GPS) RWY 8  
1:100000 SCALE

21. CIRC CAT C  
TREE 481

20. CIRC CAT B  
TREE 437

19. CIRC CAT A  
TREE 429

22. CIRC CAT D  
AAO 1400

14. LNAV STEP  
TREE 329

KPAIL  
Transverse Mercator  
Scale 1:100000

PAIL, ILIAMNA  
ILIAMNA, ALASKA  
RNAV (GPS) RWY 8  
1:100000 SCALE

21. CIRC CAT C  
TREE 481

20. CIRC CAT B  
TREE 437

19. CIRC CAT A  
TREE 429

22. CIRC CAT D  
AAO 1400

14. LNAV STEP  
TREE 329

KPAIL  
Transverse Mercator  
Scale 1:100000

PAIL, ILIAMNA  
ILIAMNA, ALASKA  
RNAV (GPS) RWY 8  
1:100000 SCALE

21. CIRC CAT C  
TREE 481

20. CIRC CAT B  
TREE 437

19. CIRC CAT A  
TREE 429

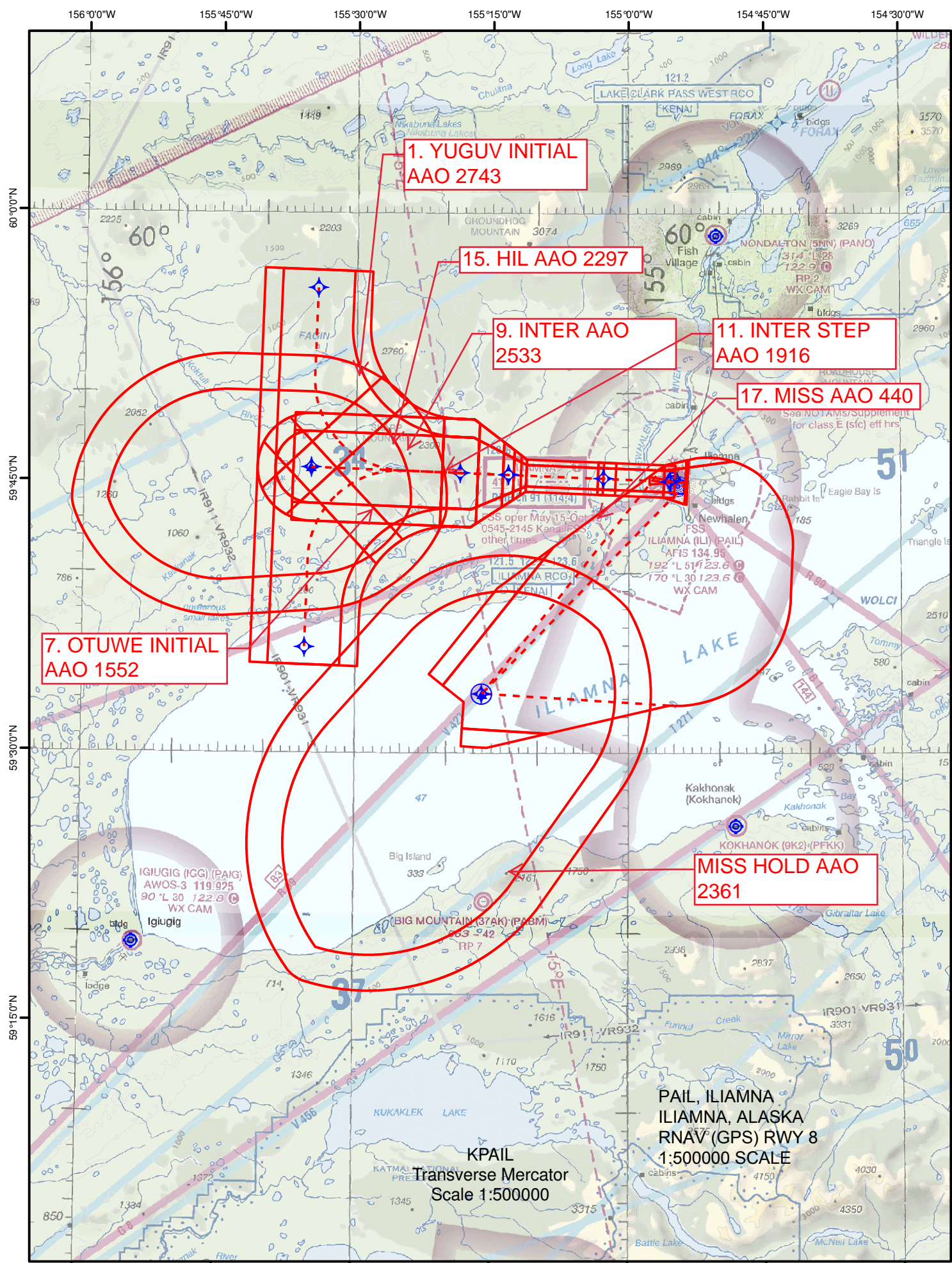
22. CIRC CAT D  
AAO 1400

14. LNAV STEP  
TREE 329

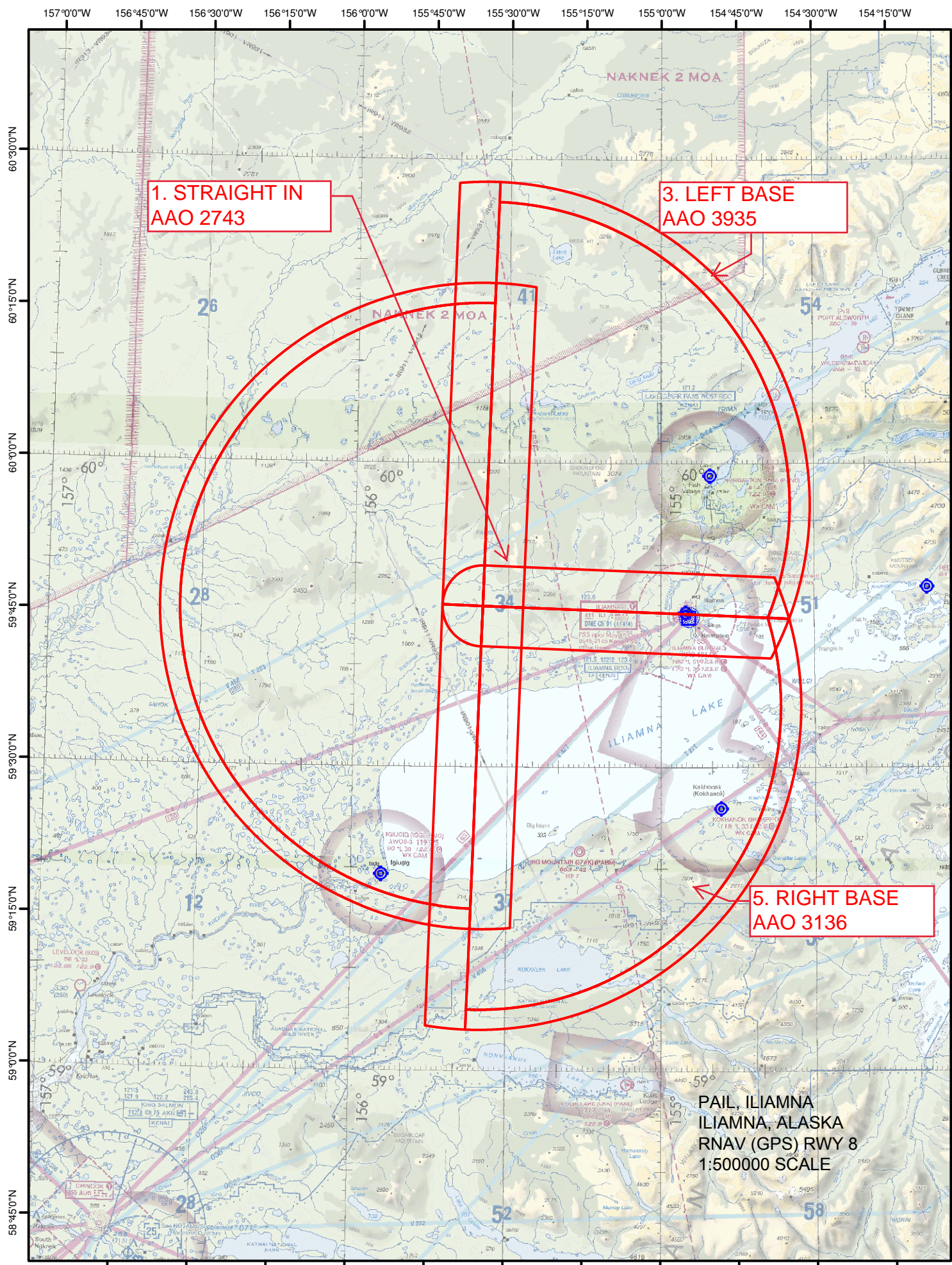
KPAIL  
Transverse Mercator  
Scale 1:100000

PAIL, ILIAMNA  
ILIAMNA, ALASKA  
RNAV (GPS) RWY 8  
1:100000 SCALE

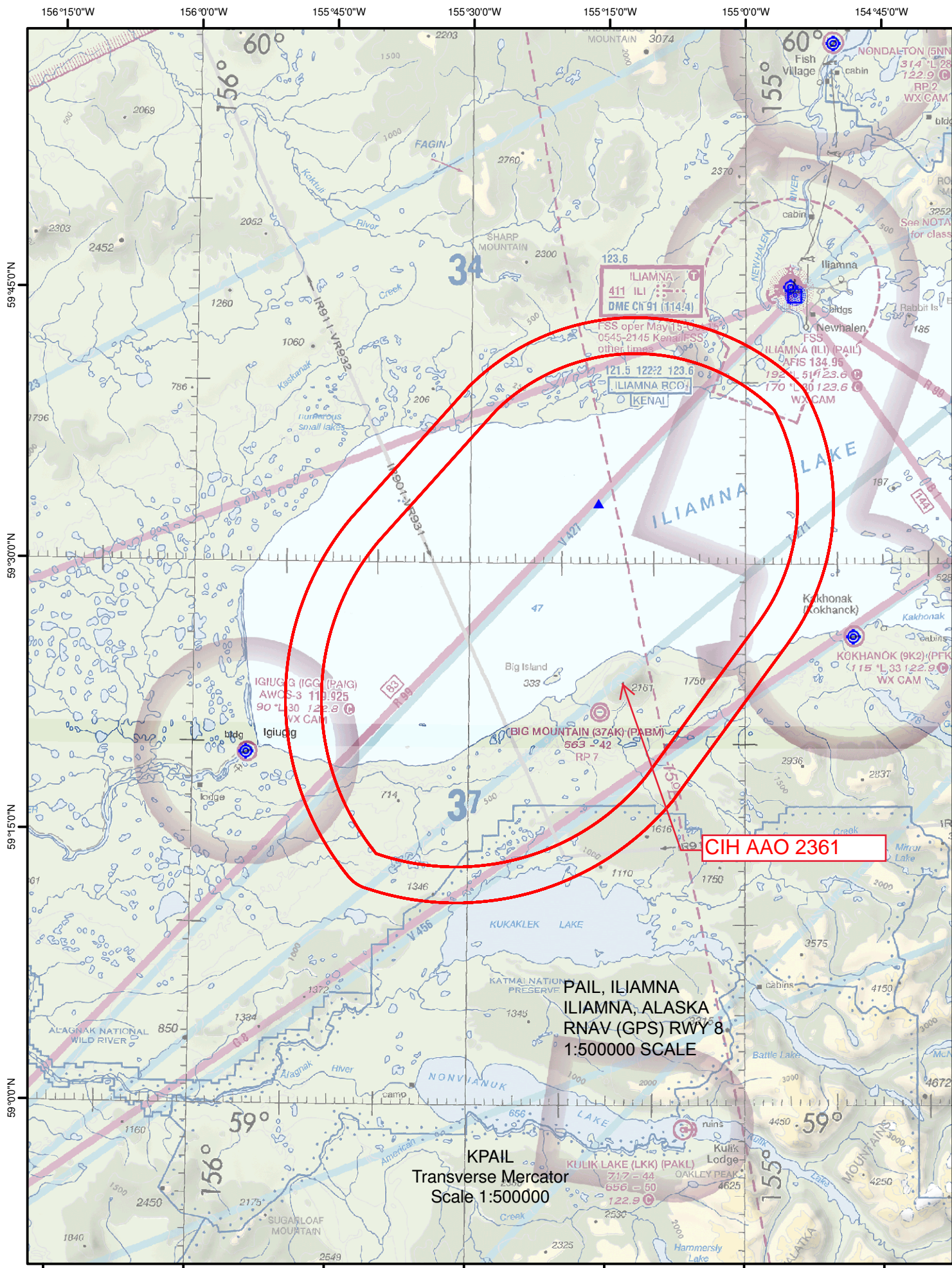














# TERMINAL AIRSPACE DATA REQUIREMENTS

CITY: **ILIAMNA**

STATE: **AK**

AIRPORT NAME: **ILIAMNA**

ID: **PAIL**

PROCEDURE: **RNAV (GPS) RWY 08**

AMDT: **4**

DOCKET#: **NOT REQUIRED**

(96-AXX-X/Required/Not Required)

**ALL DIST TO 1/100 NM; ELEV TO NEAREST FT; COORD TO 1/100 SEC; DEG TO 1/100 DG.**

- |   |                                 |                                |               |
|---|---------------------------------|--------------------------------|---------------|
| 1. Distance from  | <u>THLD</u>                     | to 1000' point                 | <u>5.67</u>   |
| <small>(Enter THLD, FAF, ARP, FACILITY, as appropriate)</small>                           |                                 |                                |               |
| 2. Width of   | <u>FINAL</u>                    | segment at 1000' point         | <u>1.20</u>   |
| <small>(Enter appropriate segment, final, intermediate, etc.)</small>                     |                                 |                                |               |
| 3. True Course of   | <u>FINAL</u>                    | segment containing 1000' point | <u>092.13</u> |
| 4. High Terrain in  | <u>FINAL</u>                    | segment containing 1000' point | <u>673</u>    |
| 5. Distance from  | <u>THLD</u>                     | to 1500' point                 | <u>7.20</u>   |
| <small>(If 1500' point in PT maneuvering area or holding pattern note in remarks)</small> |                                 |                                |               |
| 6. Width of   | <u>FINAL</u>                    | segment at 1500' point         | <u>1.20</u>   |
| 7. True Course of   | <u>FINAL</u>                    | segment containing 1500' point | <u>092.13</u> |
| 8. High Terrain in  | <u>FINAL</u>                    | segment containing 1500' point | <u>673</u>    |
| 9. Threshold Coordinates (if straight-in) ...   | <u>594506.79N / 1545526.60W</u> |                                |               |
| 10. ARP Coordinates .....   | <u>594520.08N / 1545503.91W</u> |                                |               |
| 11. Runway Approach End and distance furthest from ARP .....                              | RWY                             | <u>26</u>                      |               |
|   | Distance                        | <u>0.69</u>                    | NM            |
| 12. FAF Coordinates .....   | <u>594528.95N 1551315.64W</u>   |                                |               |

**REMARKS: Approach/Drawing attached.**

TAA: YEGUV (IAF) 595548.91N-1553419.48W; OTUWE (IAF) 593552.62N-1553434.90W

BEEKS (IF/IAF) 594550.77N-1553457.38W RADIUS: 30 NM