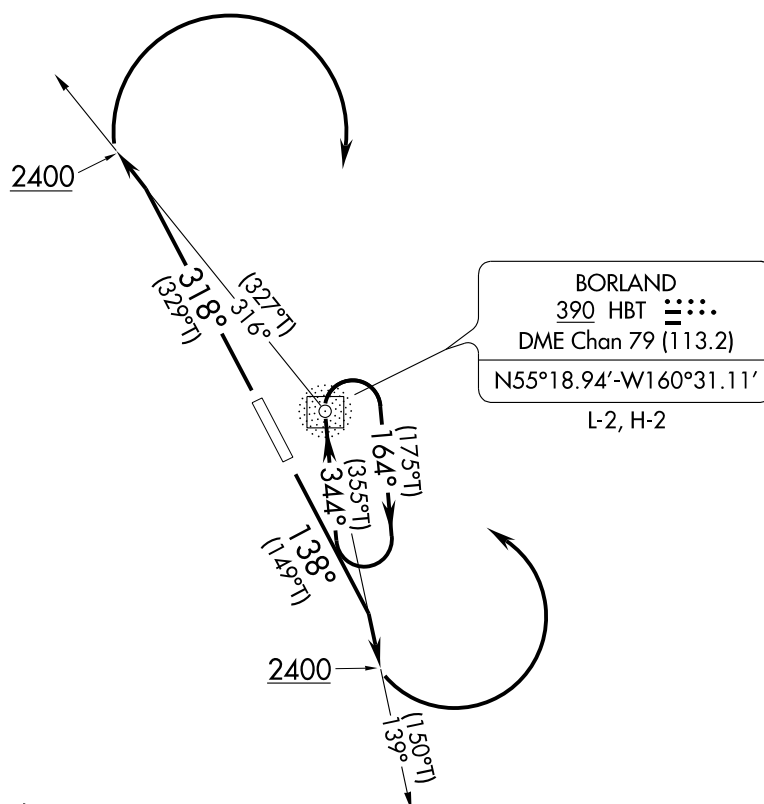


| | | | | | | |
|---|---------------|--------------------------------|---|--|---------------------------------------|-------------------------------------|
| Flight Procedure Tracking Form | | Action: FLIGHT CHECK | Task Type: GRAPHICAL DP | Date Open: 07/14/2015 | Task #: 2015071432933002001 | Request #: 20150714329330 |
| Procedure: BORLAND TWO SAND POINT AK PASD | | | Airport ID: PASD | Airport: SAND POINT | | Reimbursable #: NO |
| City: SAND POINT | ST: AK | GPS #: | Estimated Chart Date: 03/29/2018 | | FICO #: | |
| Fac ID: N/A | | Fac. Type: | | | Specialist: HERMAN ROGERS | |
| Procedure Review | | | | | | |
| | Rec'd | Rel'd | Full Name | Comments | | |
| Lead: | 08/30/2017 | 11/07/2017 | ADOLFO URRUTIA | <div>QUALITY</div> <div>3</div> <div>CHECKED</div> | | |
| QA: | 11/07/2017 | | | | | |
| Liaison: | | | | | | |
| Procedure Comments: | | | ENROUTE | Remark Type: INFORMATION | | |
| MAGVAR UPDATE PENDING DATA USED FOR PASD AIRPORT AND BORLAND (HBT) NDB ASSIGNED MAGVAR: PASD/HBT NDB OLD 15E/2005-NEW 11E/2020 CONTACT: PAT MULQUEEN/ADOLFO URRUTIA AJV-543 405.954.4073/2079 | | | | | | |

ANCHORAGE CENTER
125.35 346.3
COLD BAY RADIO
122.3
CTAF
122.3

PROTOTYPE-NOT FOR NAVIGATION



NOTE: ADF required.

TAKEOFF MINIMUMS

Rwy 14: Standard

Rwy 32: Standard with minimum climb of 350' per NM to 1200
or 2600-3 for VCOA.

NOTE: Chart not to scale.

DEPARTURE ROUTE DESCRIPTION

TAKEOFF RUNWAY 14: Climb on heading 138° to intercept bearing 139° from HBT NDB to 2400 then climbing left turn direct HBT NDB, thence. . . .

TAKEOFF RUNWAY 32: Climb on heading 318° to intercept bearing 316° from HBT NDB to 2400 then climbing right turn direct HBT NDB, or for VCOA, cross Sand Point airport at or above 2500', thence. . . .

VCOA RUNWAY 32: Obtain ATC approval for VCOA when requesting IFR clearance. Climb in visual conditions to cross Sand Point airport at or above 2500', then climb direct HBT NDB, thence. . . .

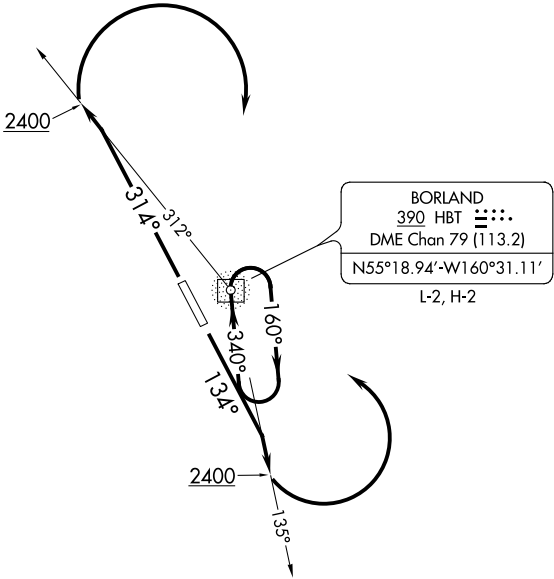
. . . continue climb in HBT NDB holding pattern (hold south, RT, 344° inbound) to 10000 before proceeding on course.

(HBT1.HBT) 16147

BORLAND ONE DEPARTURE (OBSTACLE)

SAND POINT (SDP) (PASD)
SAND POINT, ALASKA

ANCHORAGE CENTER
125.35 346.3
COLD BAY RADIO
122.3
CTAF
122.3



NOTE: ADF required.

TAKEOFF MINIMUMS

- Rwy 13: Standard or 2600-3 for climb in visual conditions. When executing VCOA, notify ATC prior to departure.
- Rwy 31: Standard with minimum climb of 420' per NM to 800 or 2600-3 for climb in visual conditions. When executing VCOA, notify ATC prior to departure.

TAKEOFF OBSTACLE NOTES

- Rwy 31: Ships beginning 1500' from DER, left and right of centerline, up to 100' AGL/100' MSL.
- Trees beginning 1.2 NM from DER, 356' left of centerline, up to 15' AGL/ 514' MSL.
- Trees beginning 1.4 NM from DER, 757' right of centerline, up to 15' AGL/599' MSL.

NOTE: Chart not to scale.

DEPARTURE ROUTE DESCRIPTION

TAKEOFF RUNWAY 13: Climb on heading 134° to intercept bearing 135° from HBT NDB to 2400 then climbing left turn direct HBT NDB, thence. . . or, climb in visual conditions to cross Sand Point Airport at or above 2500 then direct HBT NDB, thence. . .

TAKEOFF RUNWAY 31: Climb on heading 314° to intercept bearing 312° from HBT NDB to 2400 then climbing right turn direct HBT NDB, thence. . . or, climb in visual conditions to cross Sand Point Airport at or above 2500 then direct HBT NDB, thence. . .

. . . climb in HBT NDB holding pattern to 10000 before proceeding on course.

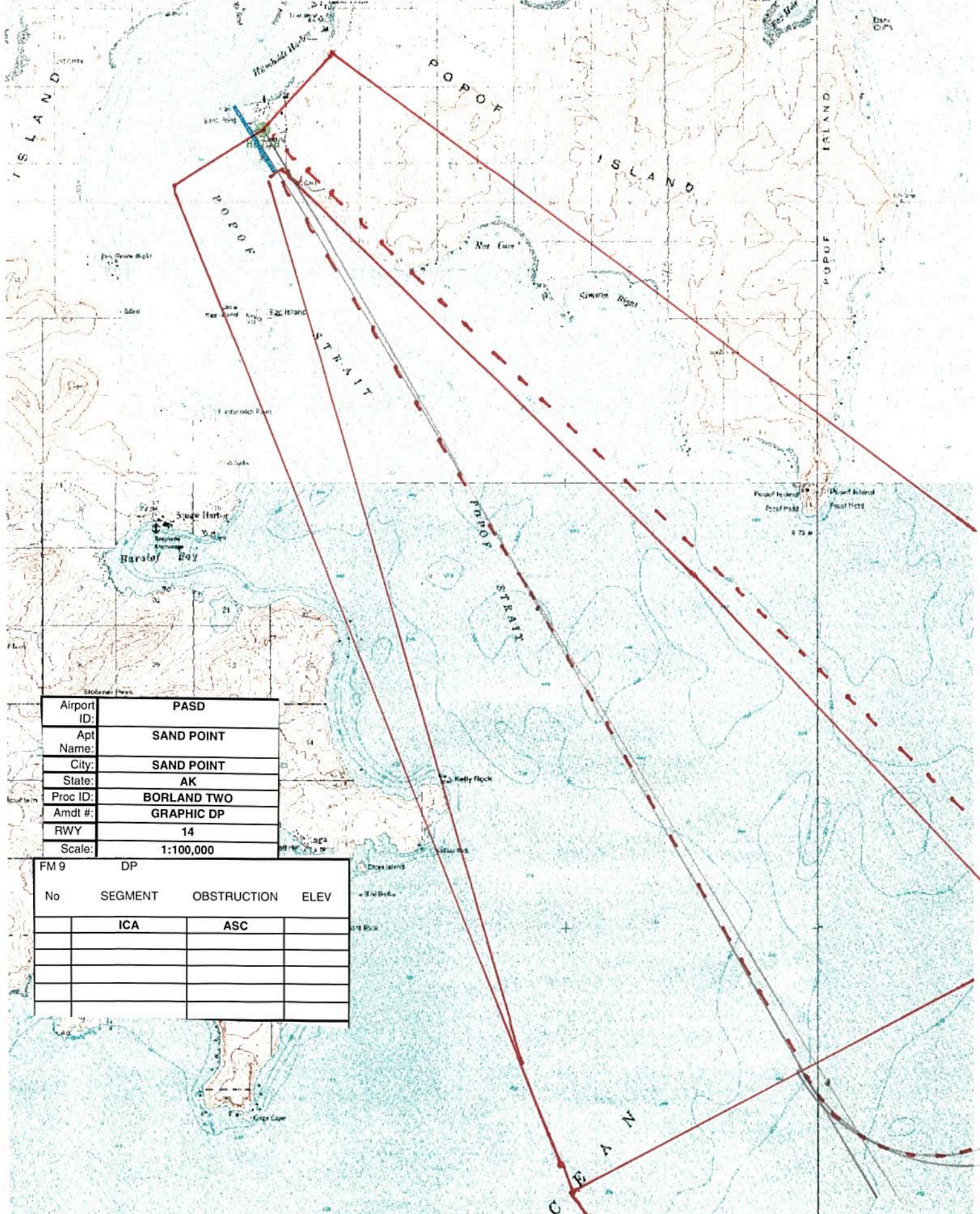
BORLAND ONE DEPARTURE (OBSTACLE)

(HBT1.HBT) 02MAY13

SAND POINT, ALASKA
SAND POINT (SDP) (PASD)

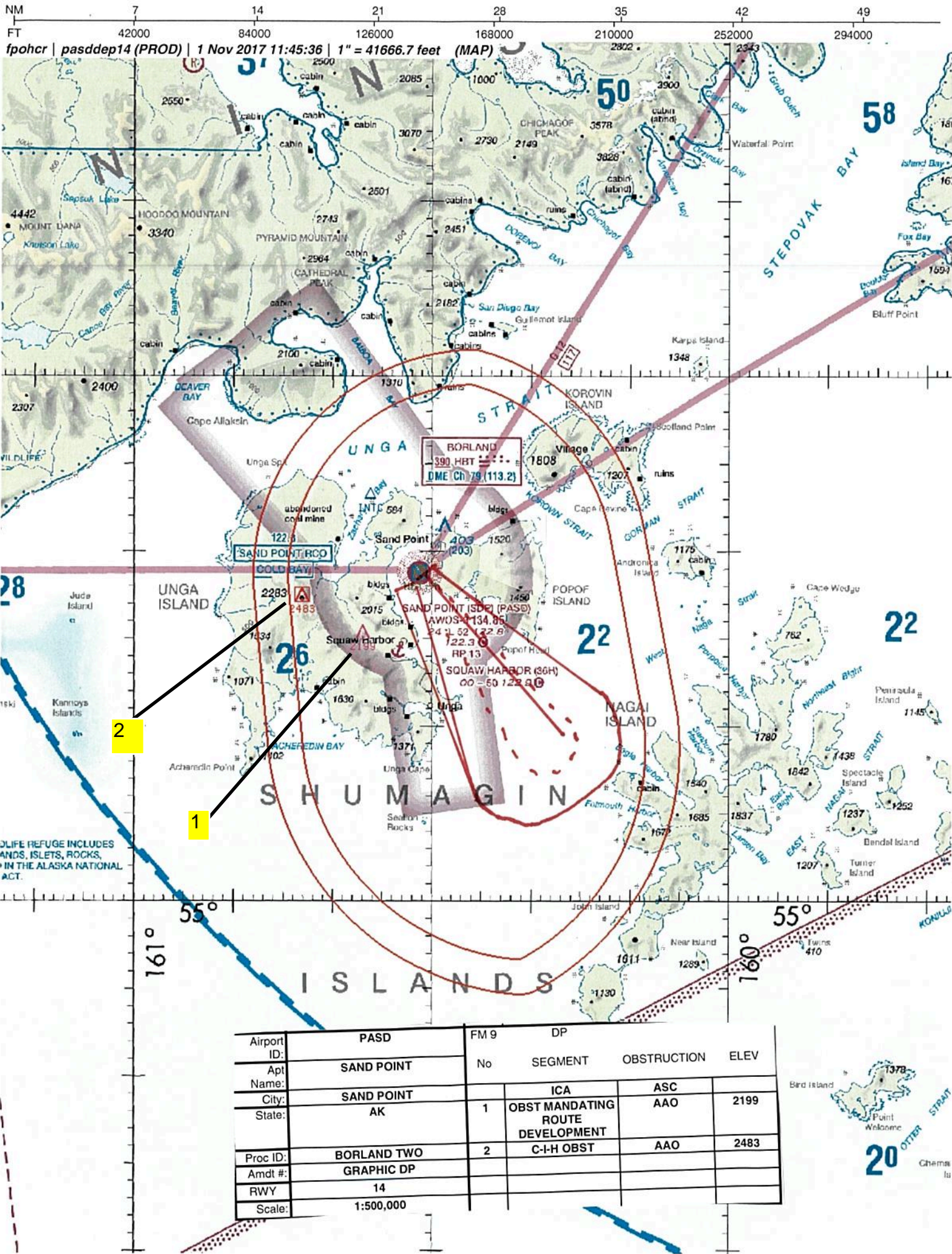
NM 1 2 3 4 5 6 7 8 9 10
FT 8000 16000 24000 32000 40000 48000 56000 64000

fpohcr | pasddep14 (PROD) | 1 Nov 2017 12:28:04 | 1" = 8333.3 feet (MAP)



| | |
|-------------|-------------|
| Airport ID: | PASD |
| Apt Name: | SAND POINT |
| City: | SAND POINT |
| State: | AK |
| Proc ID: | BORLAND TWO |
| Amdt #: | GRAPHIC DP |
| RWY | 14 |
| Scale: | 1:100,000 |

| FM 9 | | DP | |
|------|---------|-------------|------|
| No | SEGMENT | OBSTRUCTION | ELEV |
| | ICA | ASC | |
| | | | |
| | | | |
| | | | |

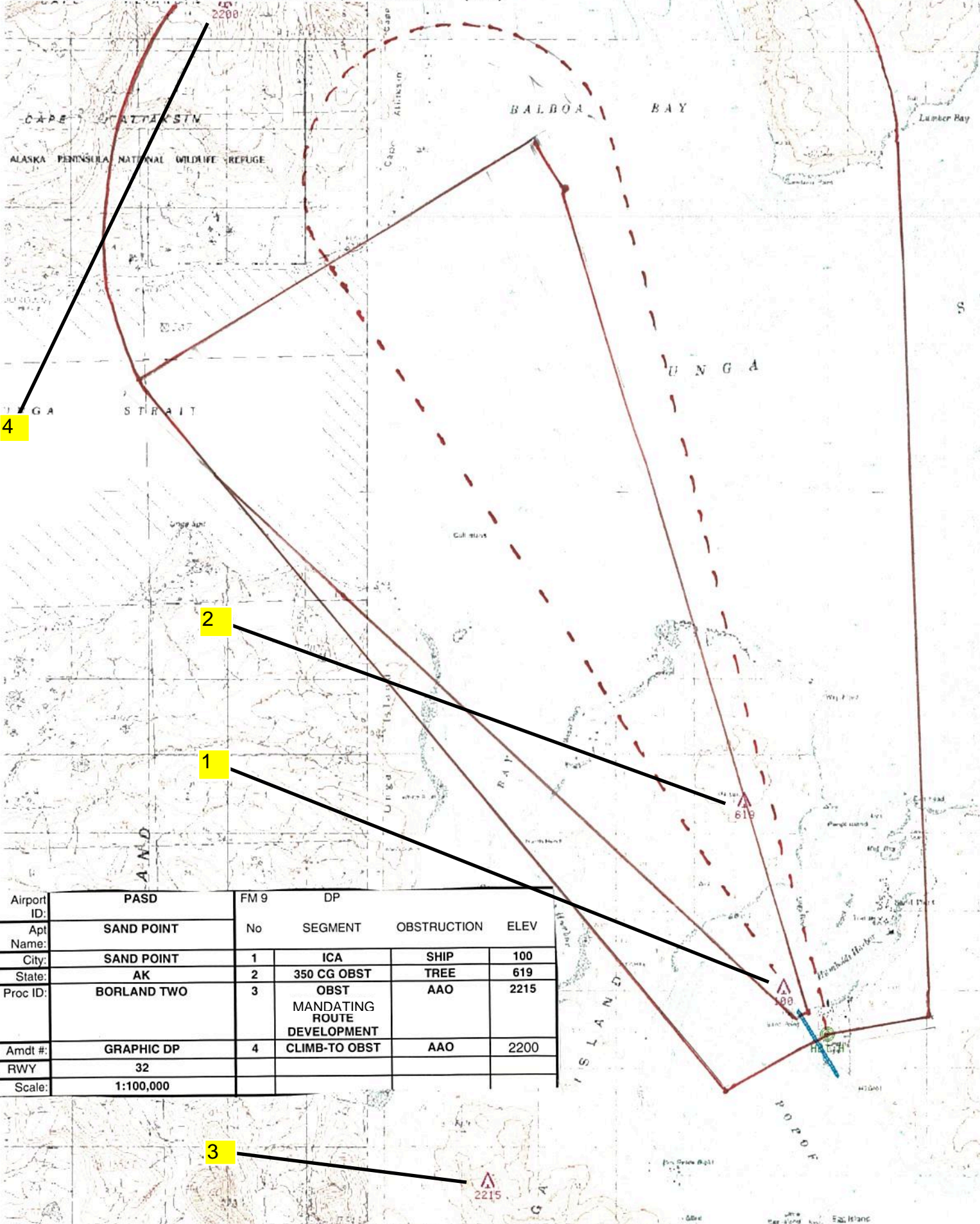
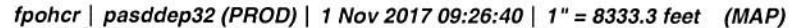


fpohcr | pasddep14 (PROD) | 1 Nov 2017 11:45:36 | 1" = 41666.7 feet (MAP)

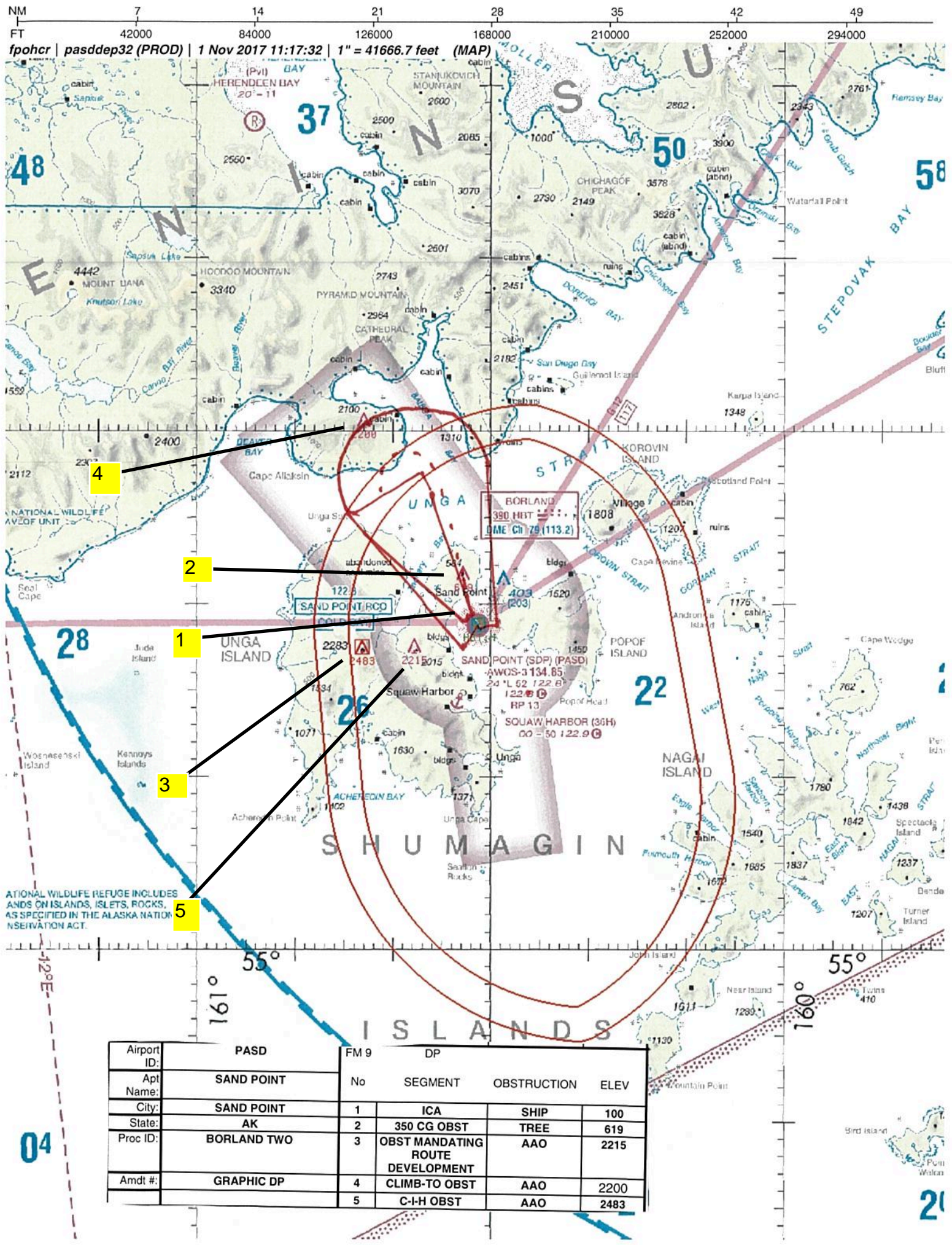
WILDLIFE REFUGE INCLUDES
ISLANDS, ISLETS, ROCKS,
AND IN THE ALASKA NATIONAL
ACT.

| Airport ID: | PASD | FM 9 | | DP | OBSTRUCTION | ELEV |
|-------------|-------------|------|----------------------------------|-----|-------------|------|
| | SAND POINT | No | SEGMENT | | | |
| Apt Name: | SAND POINT | | | | | |
| City: | SAND POINT | | | | | |
| State: | AK | 1 | ICA | ASC | AAO | 2199 |
| | | | OBST MANDATING ROUTE DEVELOPMENT | | | |
| Proc ID: | BORLAND TWO | 2 | C-I-H OBST | AAO | | 2483 |
| Amdt #: | GRAPHIC DP | | | | | |
| RWY | 14 | | | | | |
| Scale: | 1:500,000 | | | | | |





| | | | | | |
|-------------|-------------|------|---|-------------|------|
| Airport ID: | PASD | FM 9 | DP | | |
| Apt Name: | SAND POINT | No | SEGMENT | OBSTRUCTION | ELEV |
| City: | SAND POINT | 1 | ICA | SHIP | 100 |
| State: | AK | 2 | 350 CG OBST | TREE | 619 |
| Proc ID: | BORLAND TWO | 3 | OBST MANDATING ROUTE DEVELOPMENT | AAO | 2215 |
| Amdt #: | GRAPHIC DP | 4 | CLIMB-TO OBST | AAO | 2200 |
| RWY | 32 | | | | |
| Scale: | 1:100,000 | | | | |

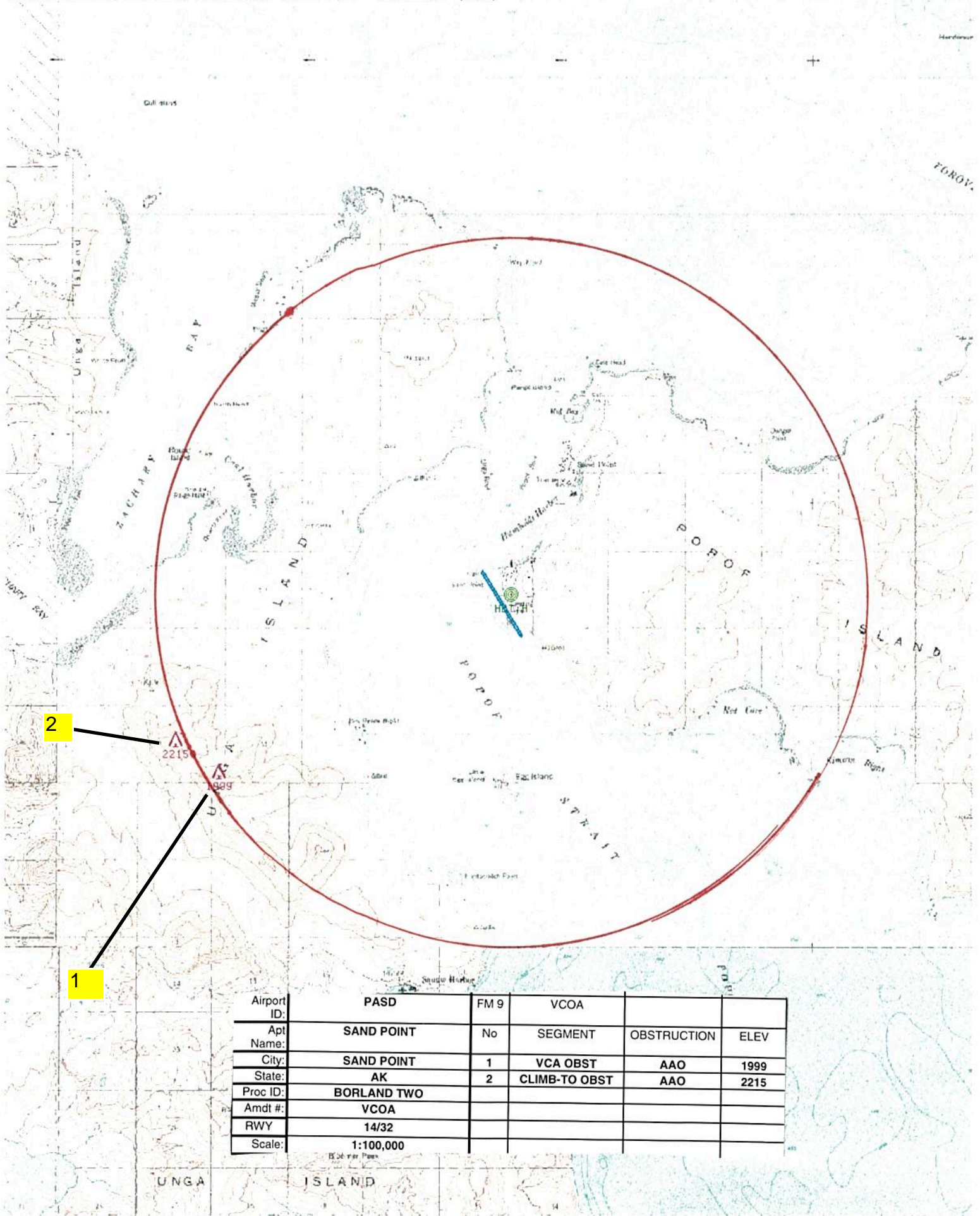


fpohcr | pasddep32 (PROD) | 1 Nov 2017 11:17:32 | 1" = 41666.7 feet (MAP)

NATIONAL WILDLIFE REFUGE INCLUDES
LANDS ON ISLANDS, ISLETS, ROCKS,
AS SPECIFIED IN THE ALASKA NATIONAL
WILDLIFE REFUGES ACT.

| Airport ID: | PASD | FM 9 | DP | | |
|-------------|-------------|------|--|-------------|------|
| | SAND POINT | No | SEGMENT | OBSTRUCTION | ELEV |
| City: | SAND POINT | 1 | ICA | SHIP | 100 |
| State: | AK | 2 | 350 CG OBST | TREE | 619 |
| Proc ID: | BORLAND TWO | 3 | OBST MANDATING ROUTE DEVELOPMENT | AAO | 2215 |
| Amdt #: | GRAPHIC DP | 4 | CLIMB-TO OBST | AAO | 2200 |
| | | 5 | C-I-H OBST | AAO | 2483 |





| | | | | | |
|-------------|-------------|------|---------------|-------------|------|
| Airport ID: | PASD | FM 9 | VCOA | | |
| Apt Name: | SAND POINT | No | SEGMENT | OBSTRUCTION | ELEV |
| City: | SAND POINT | 1 | VCA OBST | AAO | 1999 |
| State: | AK | 2 | CLIMB-TO OBST | AAO | 2215 |
| Proc ID: | BORLAND TWO | | | | |
| Amdt #: | VCOA | | | | |
| RWY: | 14/32 | | | | |
| Scale: | 1:100,000 | | | | |

