

<b>Flight Procedure Tracking Form</b>		<b>Action:</b> FLIGHT CHECK	<b>Task Type:</b> IAP	<b>Date Open:</b> 05/05/2016	<b>Task #:</b> 2015071432933001005	<b>Request #:</b> 20150714329330
<b>Procedure:</b> RNAV (GPS) RWY 32 ORIG			<b>Airport ID:</b> PASD	<b>Airport:</b> SAND POINT		<b>Reimbursable #:</b> NO
<b>City:</b> SAND POINT	<b>ST:</b> AK	<b>GPS #:</b>	<b>Estimated Chart Date:</b> 03/29/2018		<b>FICO #:</b>	
<b>Fac ID:</b> N/A		<b>Fac. Type:</b>		<b>Specialist:</b> HERMAN ROGERS		
<b>Procedure Review</b>						
	<b>Rec'd</b>	<b>Rel'd</b>	<b>Full Name</b>	<b>Comments</b>		
<b>Lead:</b>	08/30/2017					
<b>QA:</b>				12/22CTabaka		
<b>Liaison:</b>						
<b>Procedure Comments:</b>			<b>Remark Type:</b> INFORMATION			
MAGVAR UPDATE PENDING DATA USED FOR PASD AIRPORT AND BORLAND (HBT) NDB  ASSIGNED MAGVAR: PASD/HBT NDB OLD 15E/2005-NEW 11E/2020  CONTACT: PAT MULQUEEN/ADOLFO URRITIA AJV-543 405.954.4073/2079						

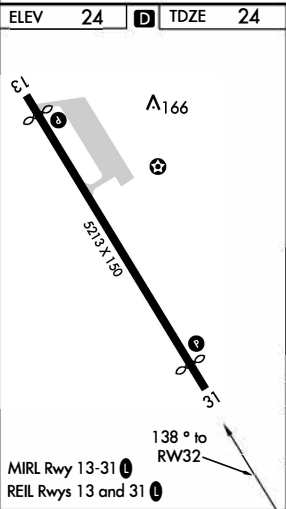
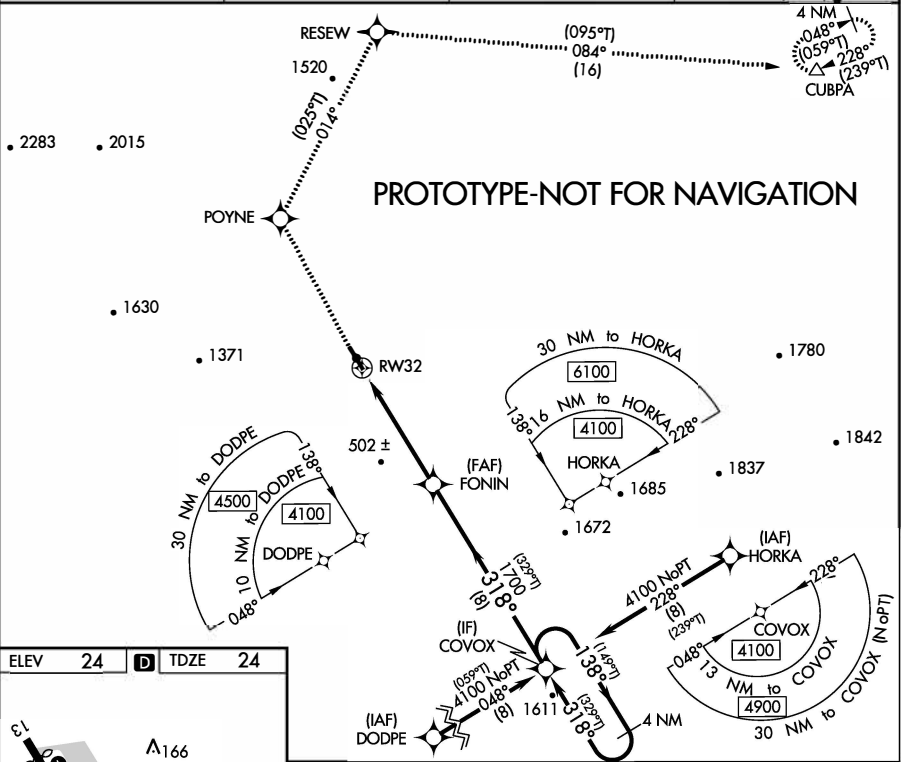
WAAS CH <b>78241</b> <b>W32A</b>	APP CRS <b>318°</b>	Rwy Idg TDZE Apt Elev <b>4100</b> <b>24</b> <b>24</b>
--	------------------------	--

RNAV (GPS) RWY 32  
SAND POINT (SDP) (PASD)

**⚠** For uncompensated Baro-VNAV systems, LNAV/VNAV NA below -20°C (-4°F) or above 54°C (130°F).  
**⚠** Circling NA northwest of Rwy 14-32.  
DME/DME RNP-0.3 NA.

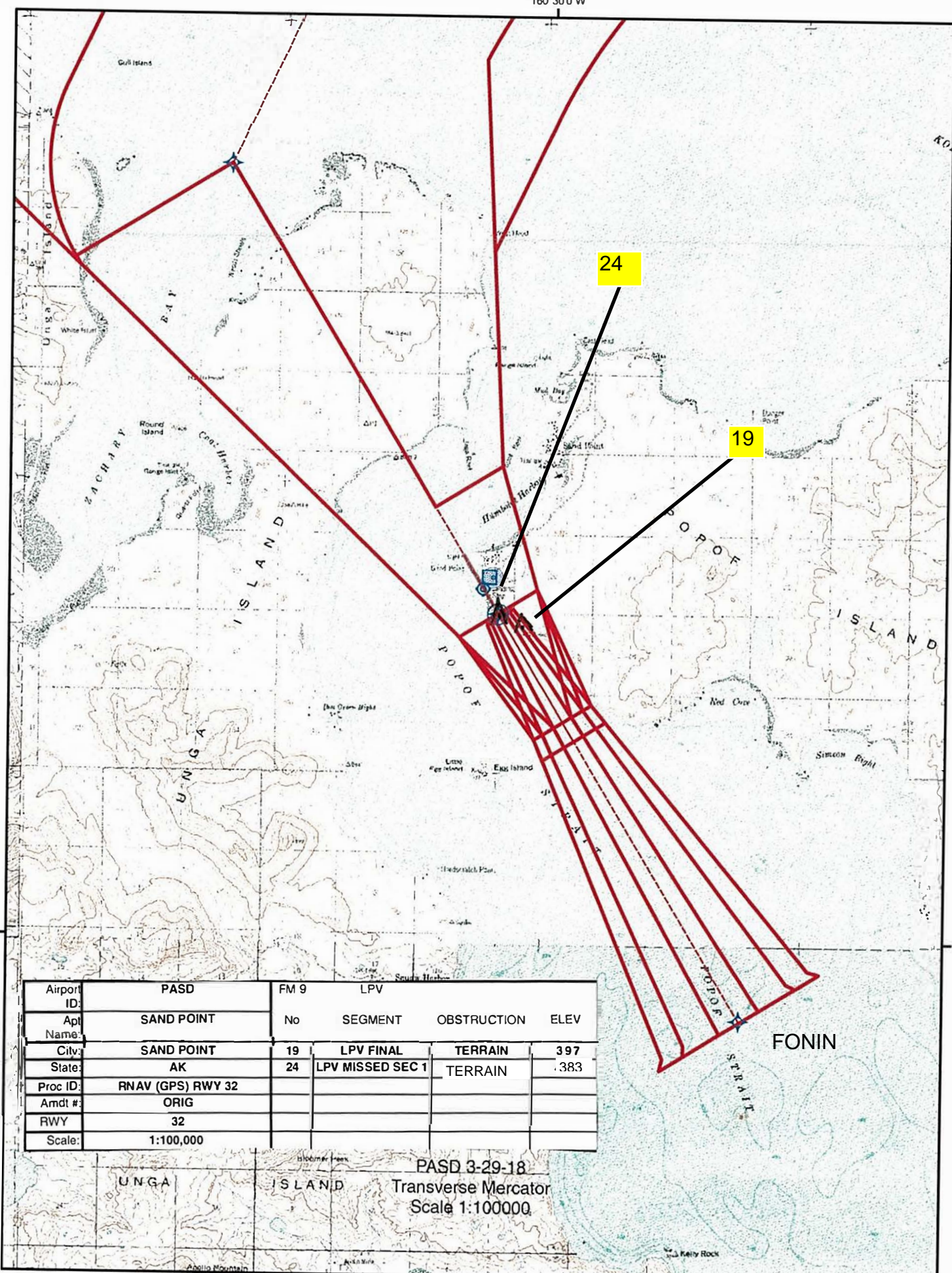
**MISSED APPROACH:** Climb to 3100 direct POYNE and on track 014° to RESEW and on track 084° to CUBPA and hold.

AWOS-3P <b>121.1</b>	ANCHORAGE CENTER <b>125.3 346.3</b>	CLNC DEL <b>122.3</b>	UNICOM <b>122.3 (CTAF)</b>
-------------------------	--	--------------------------	-------------------------------



160° 30' 0" W

55° 15' 0" N



Airport ID:	PASD	FM 9	LPV		
Apt Name:	SAND POINT	No	SEGMENT	OBSTRUCTION	ELEV
City:	SAND POINT	19	LPV FINAL	TERRAIN	397
State:	AK	24	LPV MISSED SEC 1	TERRAIN	383
Proc ID:	RNAV (GPS) RWY 32				
Amdt #:	ORIG				
RWY:	32				
Scale:	1:100,000				

PASD 3-29-18  
Transverse Mercator  
Scale 1:100000



160°30'0"W

20

55°15'0"N

Airport ID:	PASD	FM 9	LNAV/VNAV		
Apt Name:	SAND POINT	No	SEGMENT	OBSTRUCTION	ELEV
City:	SAND POINT	20	VNAV FINAL	TERRAIN	546
State:	AK				
Proc ID:	RNAV (GPS) RWY 32				
Amdt #:	ORIG				
RWY	32				
Scale:	1:100,000				

PASD 3-29-18

Transverse Mercator  
Scale 1:100000

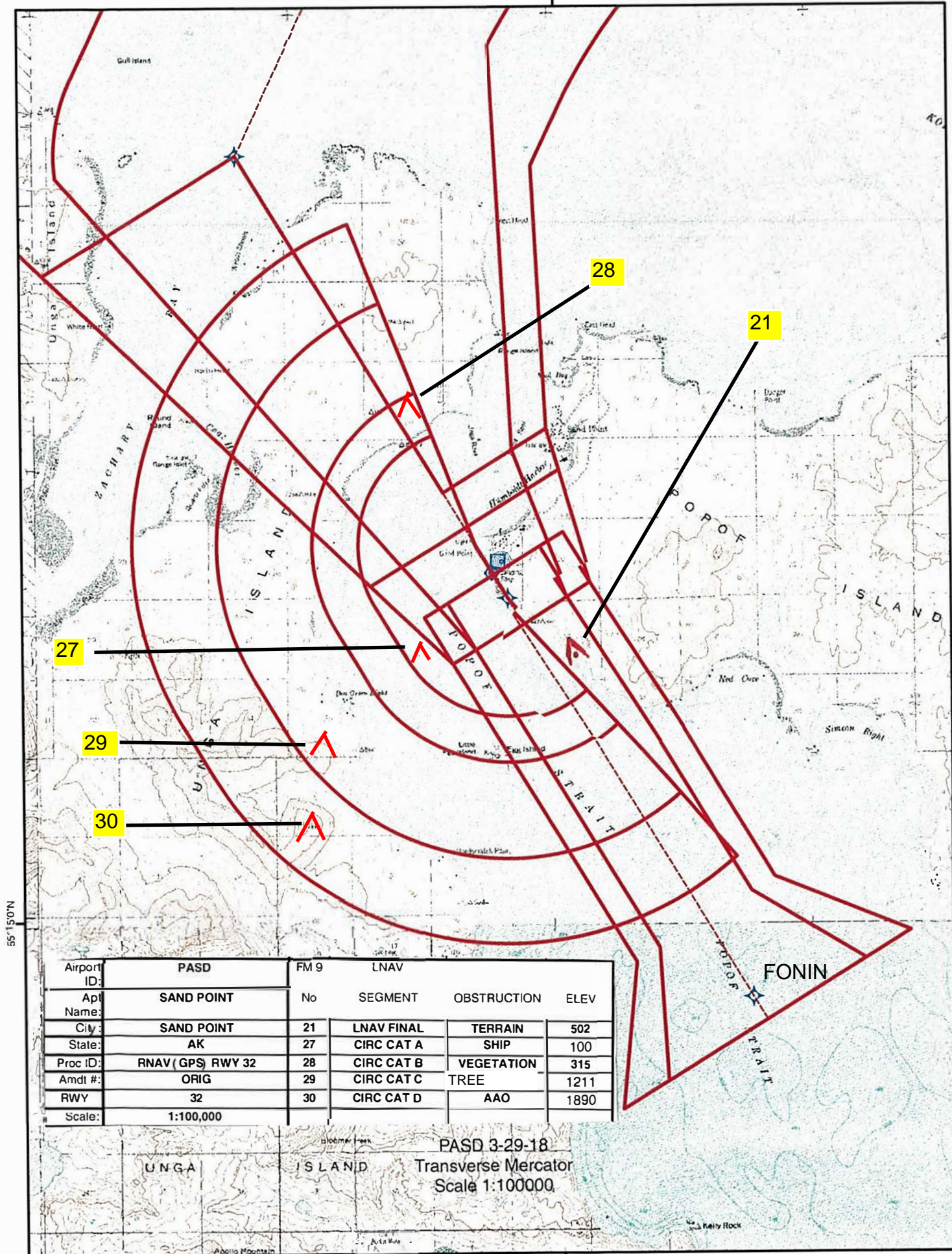
UNGA

ISLAND

FONIN



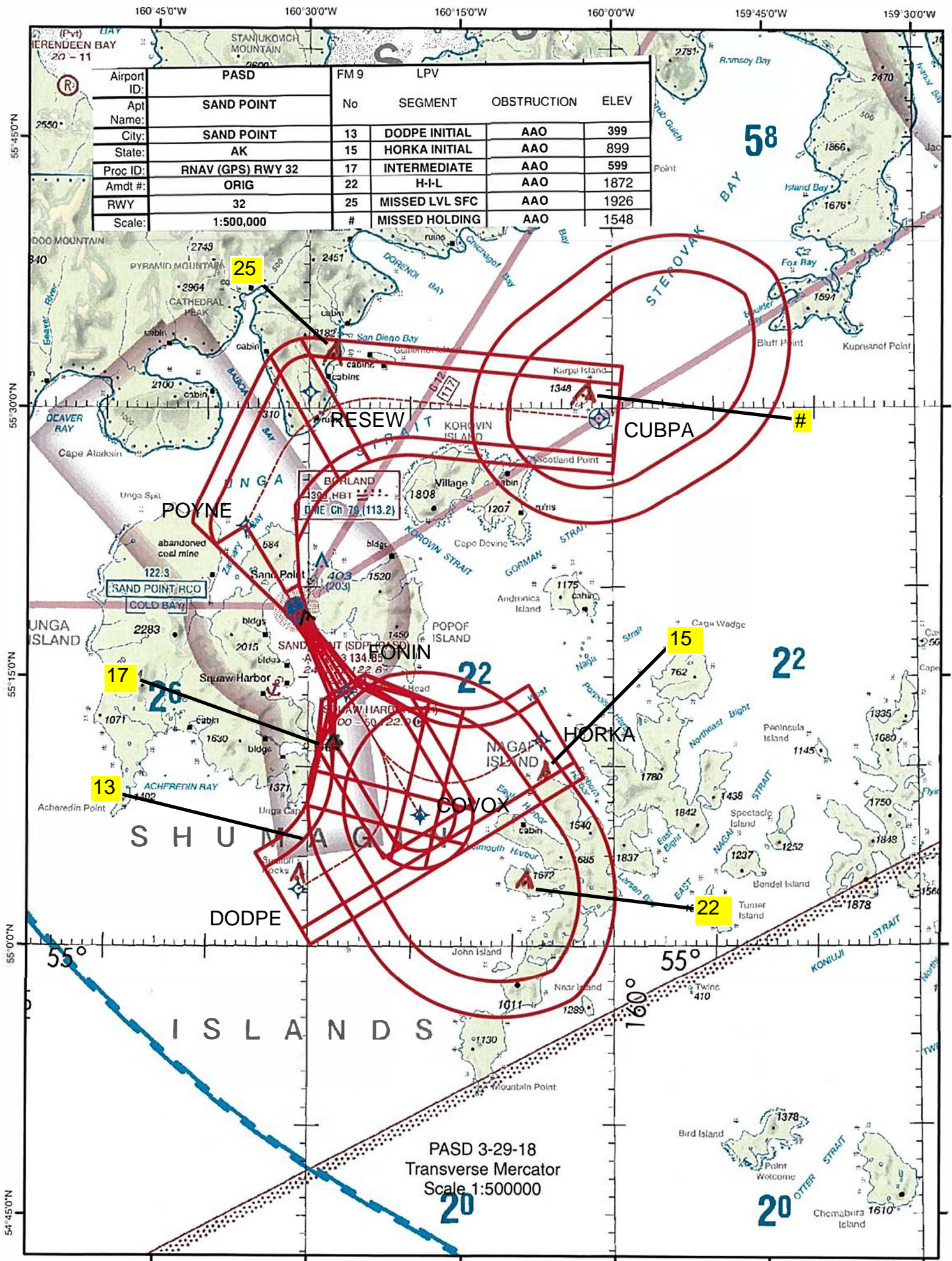
160° 30' 0" W



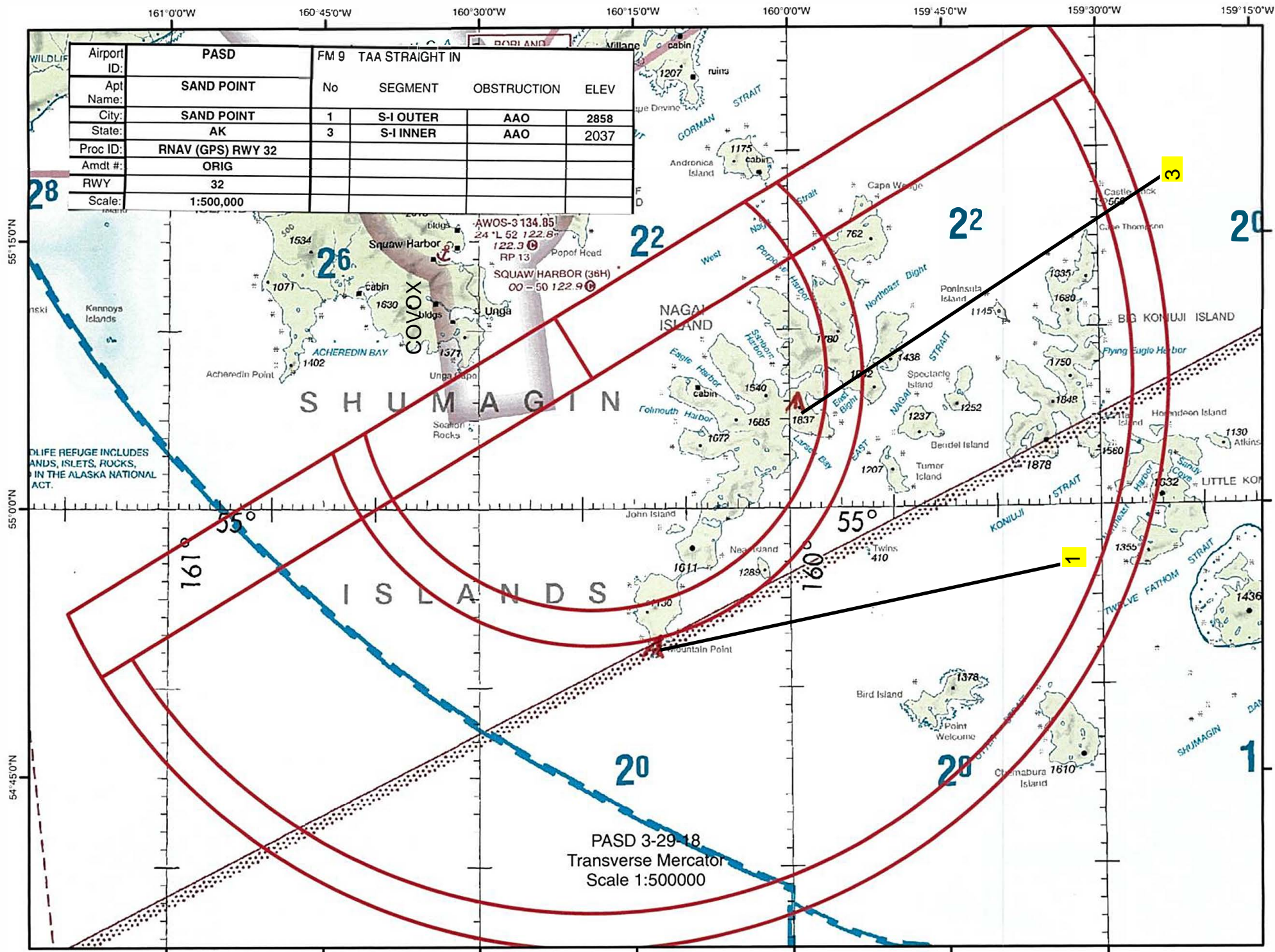
Airport ID:	PASD	FM 9	LNAV		
Apt Name:	SAND POINT	No	SEGMENT	OBSTRUCTION	ELEV
City:	SAND POINT	21	LNAV FINAL	TERRAIN	502
State:	AK	27	CIRC CAT A	SHIP	100
Proc ID:	RNAV (GPS) RWY 32	28	CIRC CAT B	VEGETATION	315
Amdt #:	ORIG	29	CIRC CAT C	TREE	1211
RWY	32	30	CIRC CAT D	AAO	1890
Scale:	1:100,000				

PASD 3-29-18  
Transverse Mercator  
Scale 1:100000

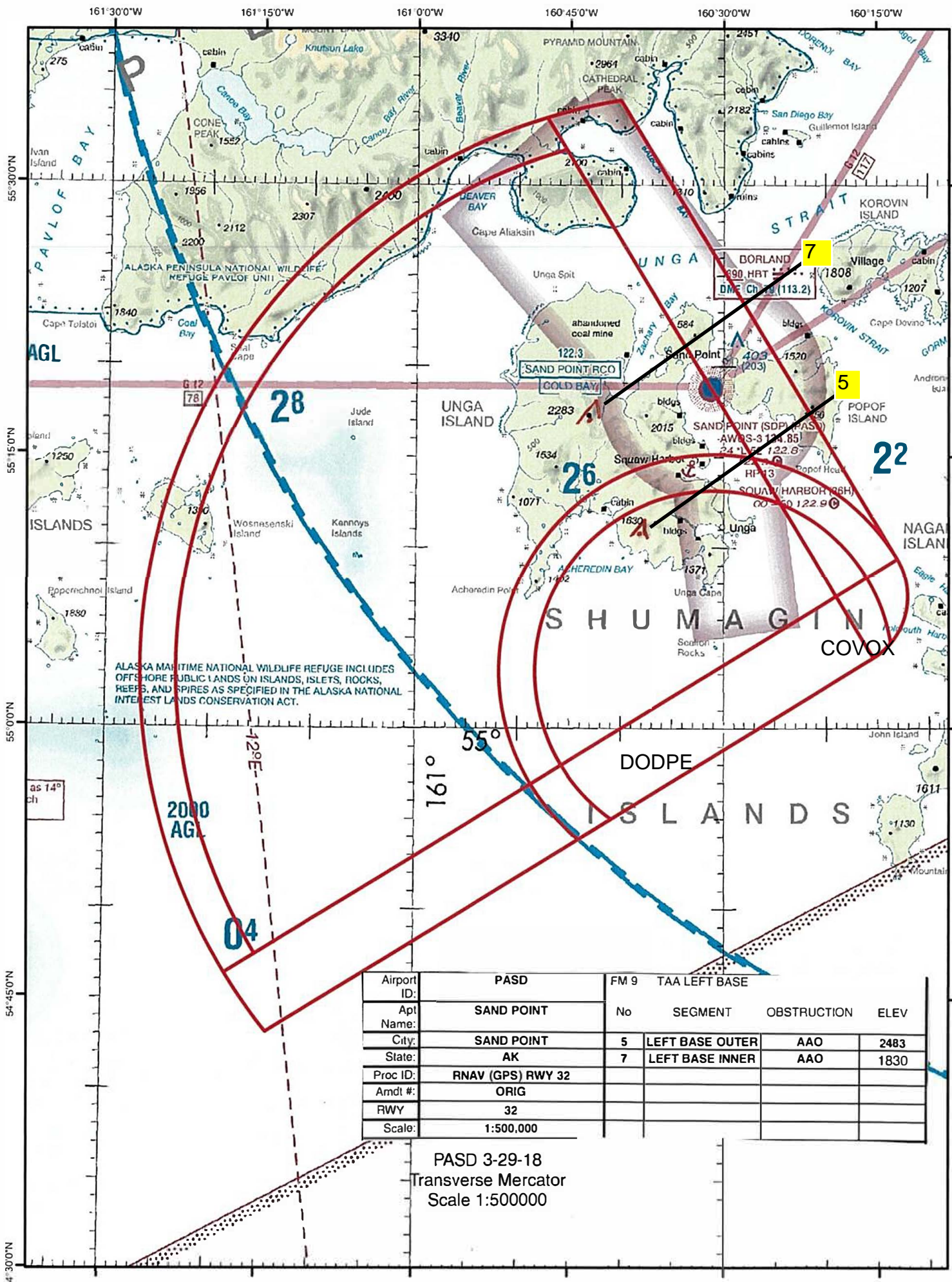








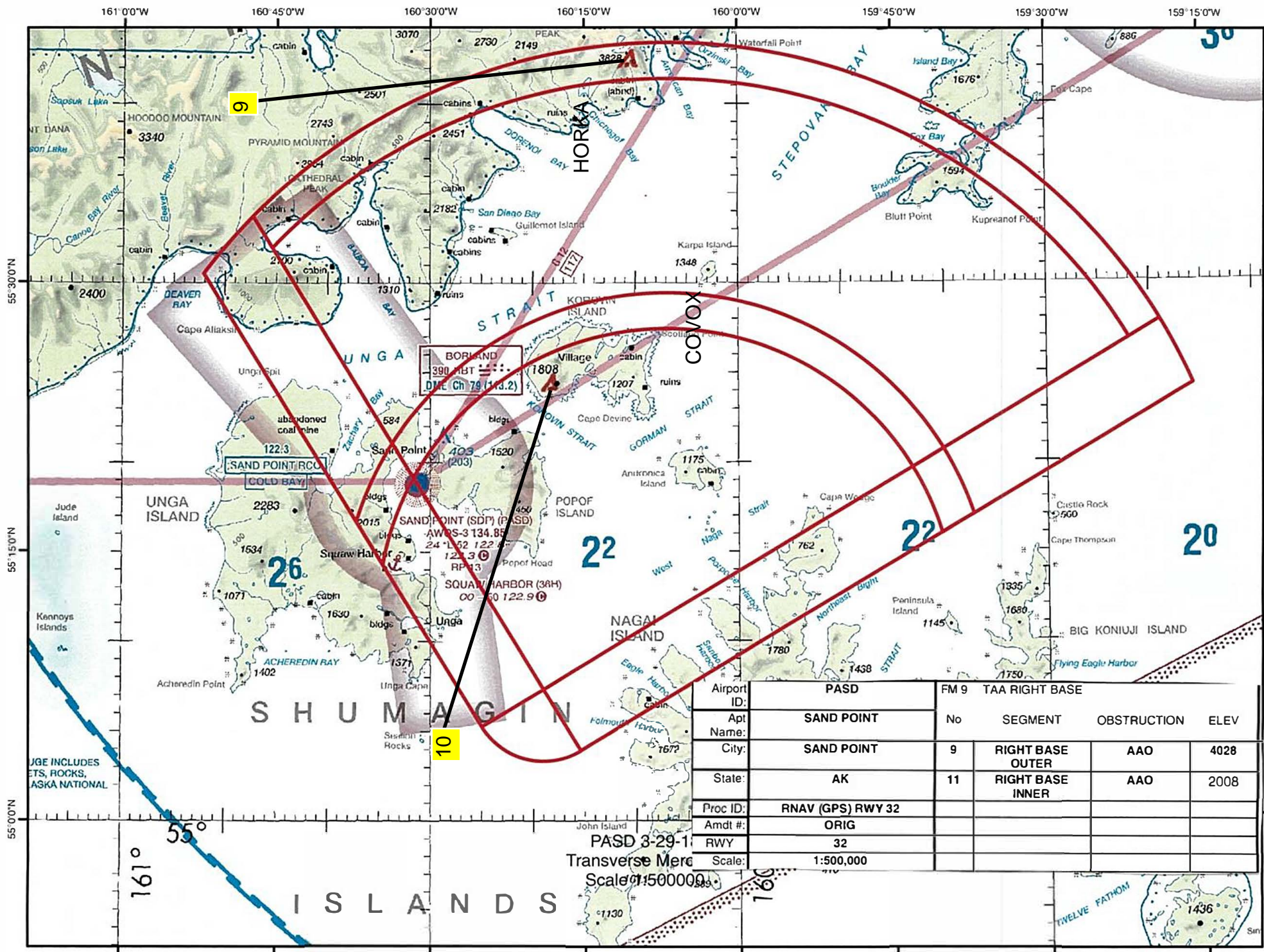




Airport ID:	PASD	FM 9	TAA LEFT BASE		
Apt Name:	SAND POINT	No	SEGMENT	OBSTRUCTION	ELEV
City:	SAND POINT	5	LEFT BASE OUTER	AAO	2483
State:	AK	7	LEFT BASE INNER	AAO	1830
Proc ID:	RNAV (GPS) RWY 32				
Amdt #:	ORIG				
RWY	32				
Scale:	1:500,000				

PASD 3-29-18  
Transverse Mercator  
Scale 1:500000







# TERMINAL AIRSPACE DATA REQUIREMENTS

CITY: SAND POINT

STATE: AK

AIRPORT NAME: SAND POINT

ID: PASD

PROCEDURE: RNAV (GPS) RWY 32

AMDT: ORIG

DOCKET # :

(96-AXX-X/Required/Not Required)

**ALL DIST TO 1/100 NM; ELEV TO NEAREST FT; COORD TO 1/100 SEC; DEG TO 1/100 DG.**

1. Distance from	THLD	to 1000' point	4.52
(Enter THLD, FAF, ARP, FACILITY, as appropriate)			
2. Width of	FINAL	segment at 1000' point	1.94
(Enter appropriate segment , final, intermediate, etc.)			
3. True Course of	FINAL	segment containing 1000' point	328.68
4. High Terrain in	FINAL	segment containing 1000' point	546
5. Distance from	THLD	to 1500' point	6.86
(If 1500' point in PT maneuvering area or holding pattern note in remarks)			
6. Width of	INTERMEDIATE	segment at 1500' point	4.01
7. True Course of	INTERMEDIATE	segment containing 1500' point	328.68
8. High Terrain in	INTERMEDIATE	segment containing 1500' point	399
9. Threshold Coordinates (if straight-in) ...	551832.21N	/	1603058.84W
10. ARP Coordinates .....	551849.30N	/	1603117.10W
11. Runway Approach End and distance furthest from ARP.....RWY	14		
	Distance	0.43	NM
12. FAF Coordinates .....	551408.73N	/	1602617.61W
(Click to Select)			

## REMARKS:

IAF: DODPE: 550310.28N/1603056.65W IAF: HORKA: 551127.03N/1600706.84W IF:COVOX: 550719.24N/1601902.98W