

Flight Procedure Tracking Form		Action: FLIGHT CHECK	Task Type: IAP	Date Open: 05/08/2017	Task #: 2015071328151601004	Request #: 20150713281516
Procedure: RNAV (GPS) RWY 20R AMDT 4			Airport ID: PAEN	Airport: KENAI MUNI		Reimbursable #: NO
City: KENAI	ST: AK	GPS #:	Estimated Chart Date: 02/01/2018		FICO #:	
Fac ID: N/A		Fac. Type:		Specialist: JASON KRETSCHMER		
Procedure Review						
	Rec'd	Rel'd	Full Name	Comments		
Lead:	07/10/2017	08/21/2017	DION LANCIA			
QA:	08/21/2017		Wilson 11/27/2017			
Liaison:						
Procedure Comments:			ENROUTE-NON	Remark Type: INFORMATION		
<p>CONTACT DION LANCIA, AJV-5423, 405-954-1267.</p> <p>ACTIVE DATA (12-10-15) USED FOR PAEN AIRPORT AND RUNWAYS.</p> <p>FULL AMENDMENT, CIRCLING CAT D LOWER THAN PREVIOUS AMENDMENT. UPDATED FOR UNIFORMITY OF IAP'S AT AIRPORT. FPT NOTIFIED.</p> <p>PNOTAM 7/6828 INCORPORATED.</p>						

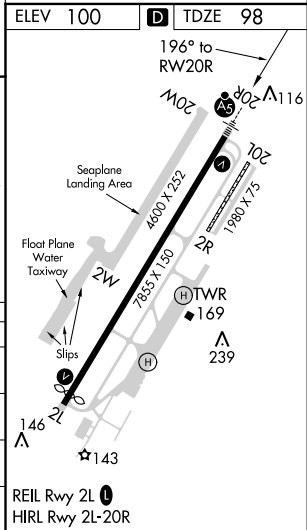
FIPC BASIC FORM						
PROCEDURE: RNAV (GPS) RWY 20R 4			AIRPORT NAME: KENAI MUNI		AIRPORT ID: PAEN	SPECIAL CONTROL NO: KG-12-146-17
FAC ID: PAEN20R.04		CITY: KENAI			ST: AK	ORIG CHART DATE: 03/29/2018
DFL TYPE: PROC/S	THIRD PARTY: <input type="checkbox"/> YES	EST. TIME ON SITE: 0.4	REIMB. NUMBER:	PTS TASK ID: 2015071328151601004		
PREFLIGHT NOTES						
REVIEWER:					DATE:	
COMMENTS:					CHECK ONE: <input type="checkbox"/> FLT CK REQ <input type="checkbox"/> NFCR <input type="checkbox"/> REJECT	
					YES	NO
					CPV COMPLETE?	X
PROCEDURE RESULTS						
INSPECTION DATE: 01/12/2018	CREW #: VN888	N #:	INSTRUMENT PROCEDURE STATUS: <input type="checkbox"/> SAT <input type="checkbox"/> SAT W/CHANGES <input checked="" type="checkbox"/> UNSAT		ARINC CODING: <input type="checkbox"/> SAT <input type="checkbox"/> SAT/GOLD <input type="checkbox"/> UNSAT	
FLIGHT INSPECTOR SIGNATURE: elizabeth whaley @ 01/12/2018 15:49			PRINTED NAME: AVN, CREWMEMBER 2			NOTAM INITIATED? <input type="checkbox"/> YES <input checked="" type="checkbox"/> NO
FLIGHT INSPECTOR REMARKS: All coding correct EXCEPT could not verify coords of ENA. Incomplete package, no 8260-2 for ENA.						
IN-FLIGHT OBSTACLE REPORT						
OBSTRUCTION ID #:	COORDINATES OR LOCATION:	GNSS ALTITUDE (MSL):	BAROMETRIC ALTITUDE (MSL):	HEIGHT ABOVE GROUND LEVEL:		

FIG

RNAV (GPS) RWY 20R
KENAI MUNI (ENA) (PAEN)

MALSR MISSED APPROACH:
Climb to 2000 direct
FOPTY and hold.




ATIS	ANCHORAGE CENTER	KENAI TOWER★	GND CON	KENAI RADIO
133.35	125.7 379.1	121.3 (CTAF) 239.3	118.75	122.65



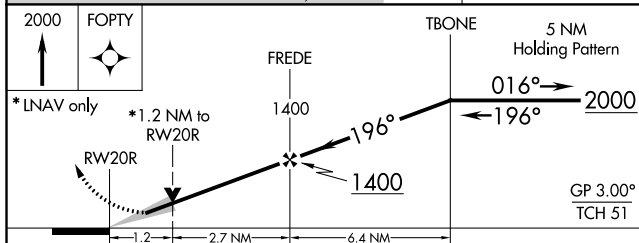
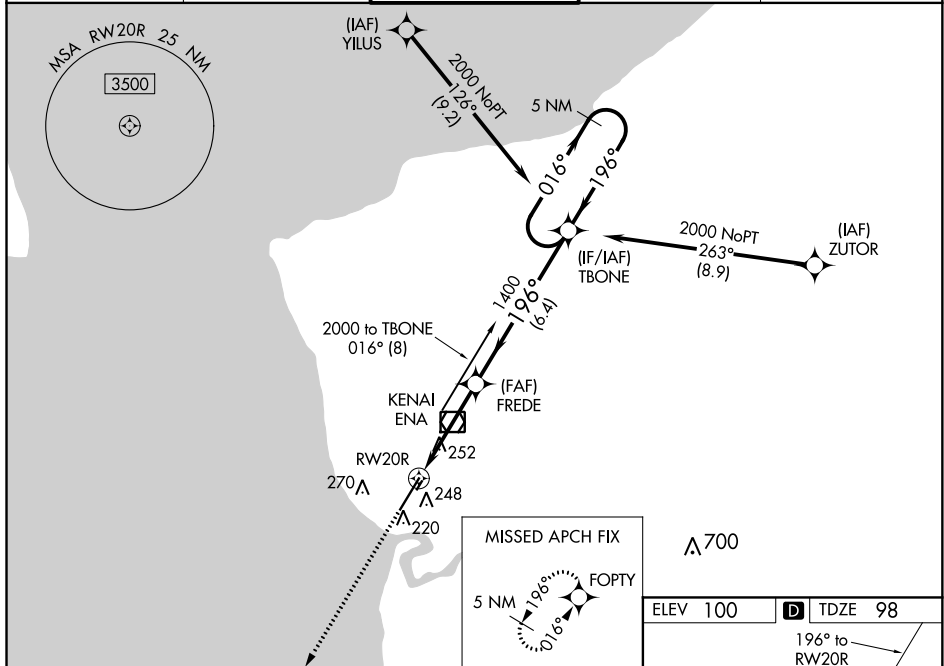
KENAI MUNI (ENA) (PAEN)
RNAV (GPS) RWY 20R


WAAS CH 99504 W20A	APP CRS 196°	Rwy Idg 7575 TDZE 98 Apt Elev 100
--	------------------------	--

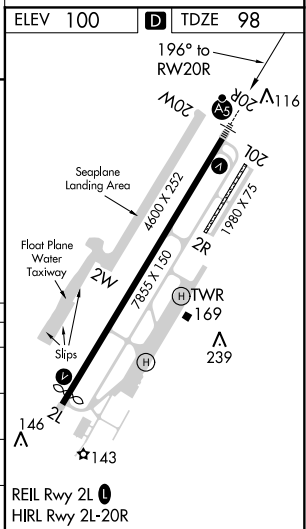
RNAV (GPS) RWY 20R
KENAI MUNI (ENA) (PAEN)

  -31°C	<p>Circling Rwy 2R, 20L NA at night. Baro-VNAV NA when using Soldotna altimeter setting. For uncompensated Baro-VNAV systems, LNAV/VNAV NA below -18°C (0°F) or above 54°C (130°F). DME/DME RNP-0.3 NA. VDP NA when using Soldotna altimeter setting. When local altimeter setting not received, use Soldotna altimeter setting and increase all DA 22 feet and all MDA 40 feet, increase LNAV visibility Cat C and D to RVR 5000.</p>	<p>MALS R</p> 	<p>MISSED APPROACH: Climb to 2000 direct FOPTy and hold.</p>
--	--	---	---

ATIS 133.35	ANCHORAGE CENTER 125.7 379.1	KENAI TOWER ★ 121.3 (CTAF) 0 239.3	GND CON 118.75	KENAI RADIO 122.65
----------------	---------------------------------	---------------------------------------	-------------------	-----------------------



CATEGORY	A	B	C	D
LPV DA	298/24 200 (200-½)			
LNAV/ VNAV DA	348/24 250 (300-½)			
LNAV MDA	520/24 422 (500-½)		520/40 422 (500-¾)	
 CIRCLING	560-1 460 (500-1)	580-1 480 (500-1)	580-1½ 480 (500-1½)	740-2 640 (700-2)



KENAI, ALASKA
Amdt 3A 27APR17

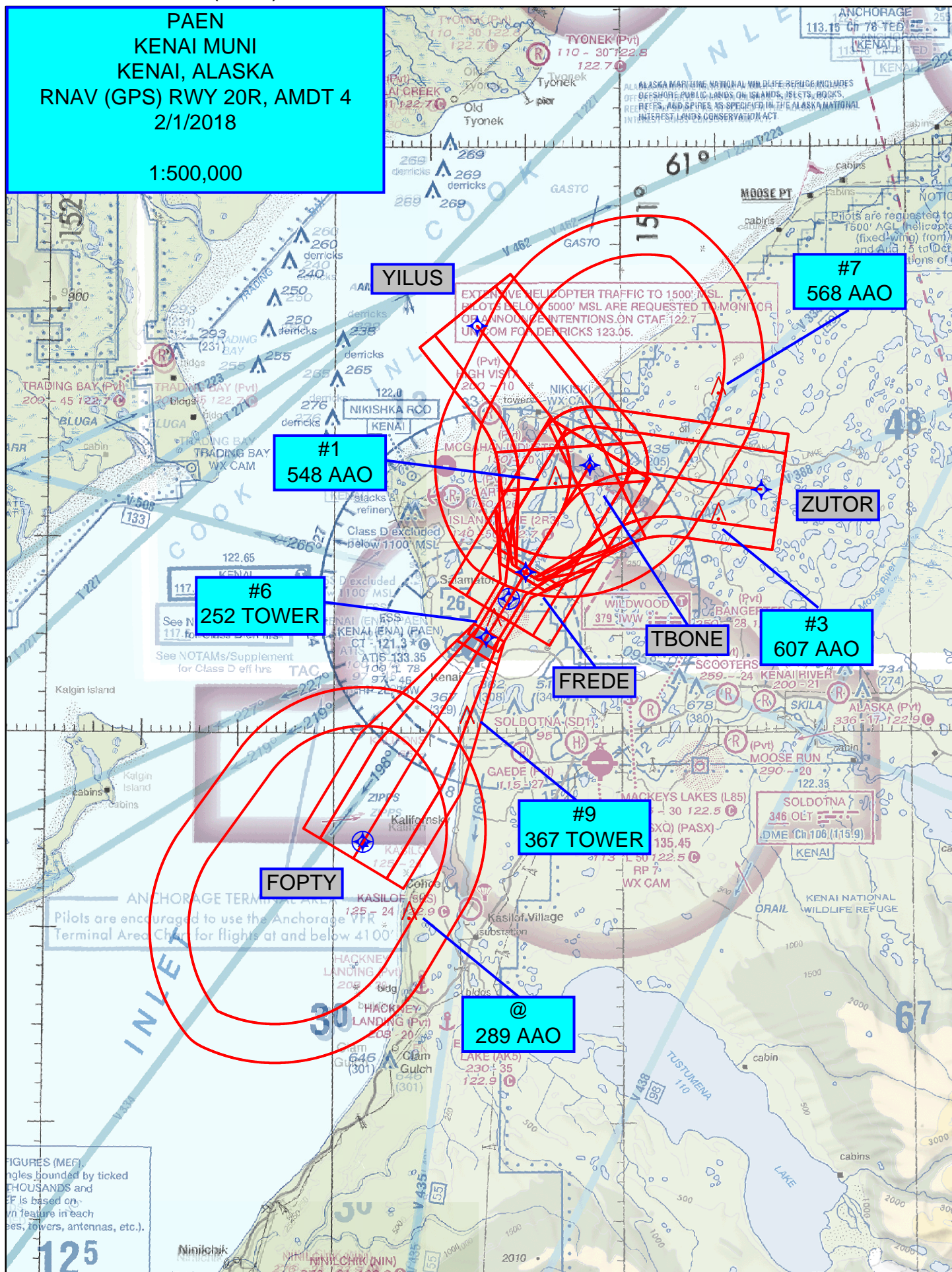
KENAI MUNI (ENA) (PAEN)
RNAV (GPS) RWY 20R

AK, 22 JUN 2017 to 17 AUG 2017

RNAV (GPS) RWY 20R, AMDT 4 FLIGHT INSPECTION MAP

PAEN
KENAI MUNI
KENAI, ALASKA
RNAV (GPS) RWY 20R, AMDT 4
2/1/2018

1:500,000



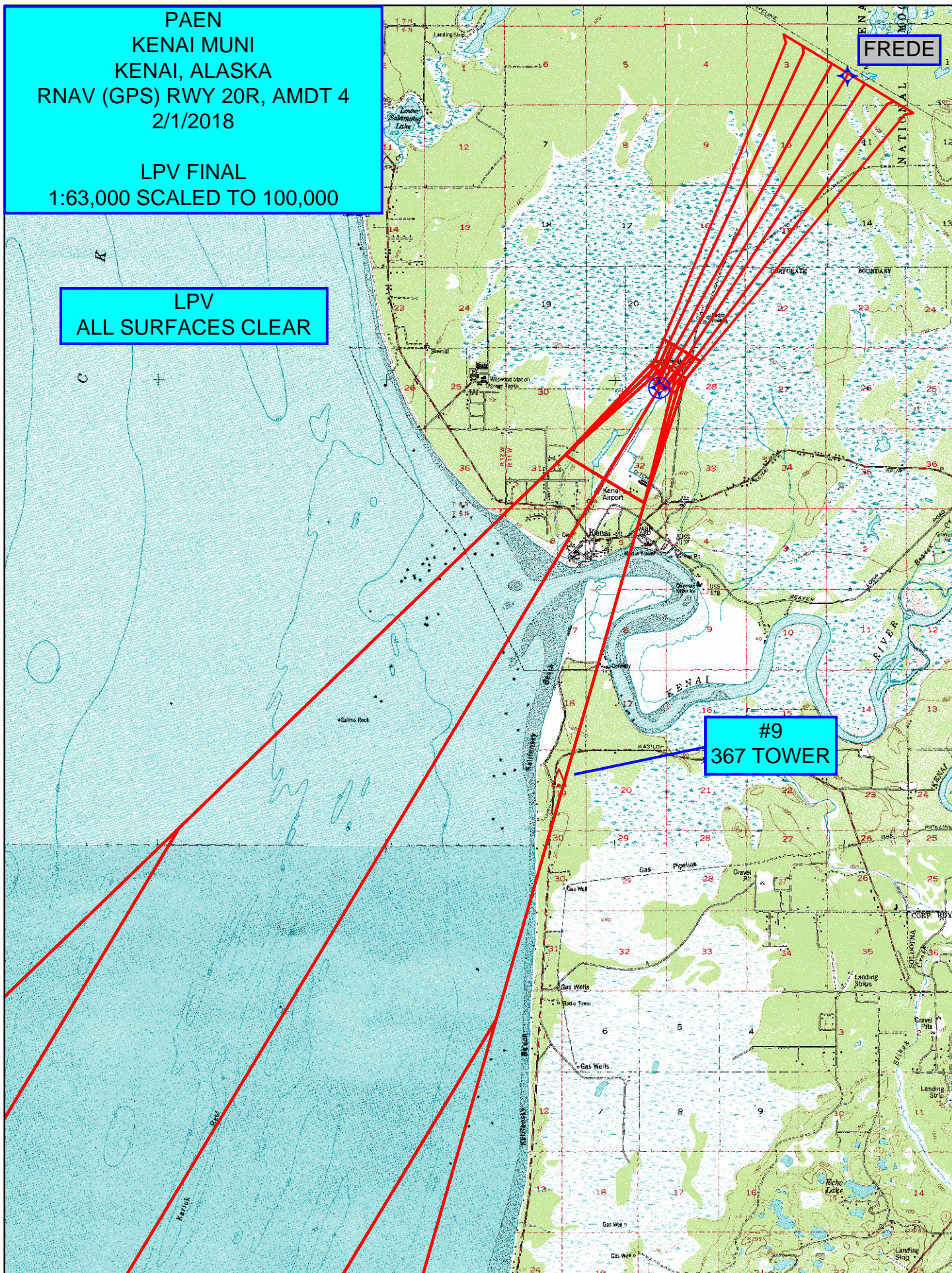
RNAV (GPS) RWY 20R, AMDT 4 FLIGHT INSPECTION MAP

PAEN
KENAI MUNI
KENAI, ALASKA
RNAV (GPS) RWY 20R, AMDT 4
2/1/2018

LPV FINAL
1:63,000 SCALED TO 100,000

LPV
ALL SURFACES CLEAR

#9
367 TOWER



RNAV (GPS) RWY 20R, AMDT 4 FLIGHT INSPECTION MAP

PAEN
KENAI MUNI
KENAI, ALASKA
RNAV (GPS) RWY 20R, AMDT 4
2/1/2018

LNAV/VNAV FINAL
1:63,000 SCALED TO 100,000

LNAV/VNAV
ALL SURFACES CLEAR

#5
159 POLE

#9
367 TOWER

RNAV (GPS) RWY 20R, AMDT 4 FLIGHT INSPECTION MAP

