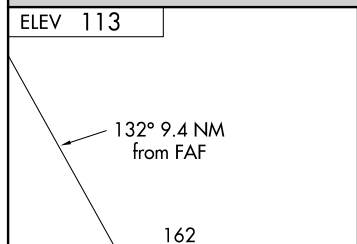


Flight Procedure Tracking Form		Action: FLIGHT CHECK	Task Type: IAP	Date Open: 05/22/2018	Task #: 2015071328151605006	Request #: 20150713281516
Procedure: VOR-A AMDT 8			Airport ID: PASX	Airport: SOLDOTNA		Reimbursable #: NO
City: SOLDOTNA	ST: AK	GPS #:	Estimated Chart Date: 02/28/2019		FICO #:	
Fac ID: ENA		Fac. Type: VOR_DME			Specialist: CASEY HILL	
Procedure Review						
	Rec'd	Rel'd	Full Name	Comments		
Lead:	05/07/2018	09/13/2018	CASIMIR TABAKA	QUALITY		
QA:	09/13/2018			22 10.30.2018 BD		
Liaison:				CHECKED		
Procedure Comments:			Remark Type: INFORMATION			
<p>ABBREVIATED AMENDMENT TO INCORPORATE SEVERAL NOTAMS (3/7899, 3/5521, 3/0695, 5/7525, 7/1158, AND 8/8441, 8/0330) - DID NOT LOWER MDA.</p> <p>PENDING AIRPORT DATA USED.</p> <p>POC: LONNIE EVERHART, 405-954-4576.</p>						

FIG

VOR-A
SOLDOTNA (SXQ)(PASX)

AWOS-3P 135.45	ANCHORAGE CENTER 125.7 379.1	CTAF 122.5
--------------------------	--	----------------------



<p>Remain within 10 NM</p> <p>3700 hdg 184°</p> <p>ENA R-138</p> <p>CABUG △</p> <p>331°T 312°</p> <p>151°T 132°</p> <p>1900</p> <p>6000</p> <p>1900</p> <p>ZIDVA ENA 9.4</p> <p>9.4 NM</p>				
CATEGORY	A	B	C	D
CIRCLING	1020-1¼	907 (1000-1¼)	1020-2¾ 907 (1000-2¾)	1020-3 907 (1000-3)

SOLDOTNA (SXQ)(PASX)

VOR-A

AUTOMATED AL-5464 VOR-A

AK
13 SEP 2018
COMPILER: HD
REVIEWER:
DBL CHKR:
EFF DATE: FIG

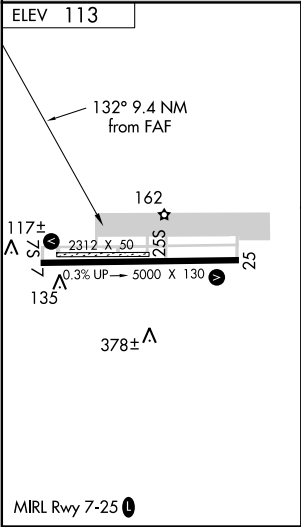
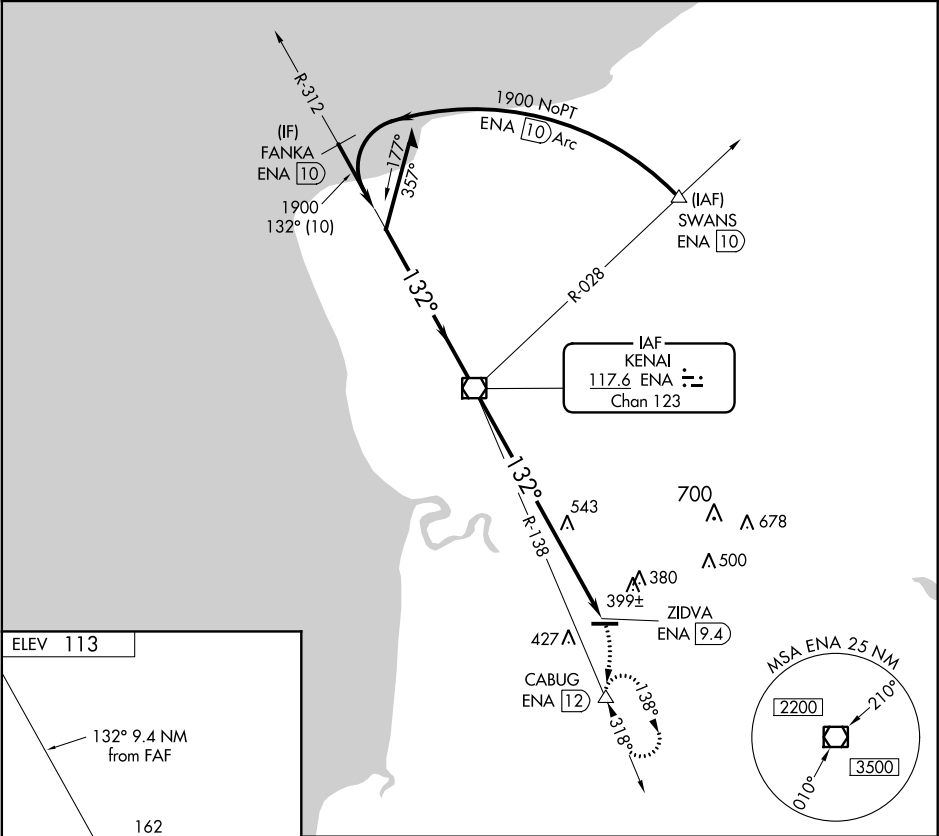
VOR/DME ENA	APP CRS	Rwy Idg	N/A
117.6	132°	TDZE	N/A
Chan 123		Apt Elev	113

OLD

VOR/DME-A
SOLDOTNA (SXQ)(PASX)

<div><div></div><div>When local altimeter setting not received, use Kenai altimeter setting and increase all MDA 40 feet.</div></div>	MISSED APPROACH: Climbing right turn to 3700 on heading 184° and on ENA R-138 to CABUG/ENA 12 DME and hold, continue climb-in-hold to 3700.
---	---

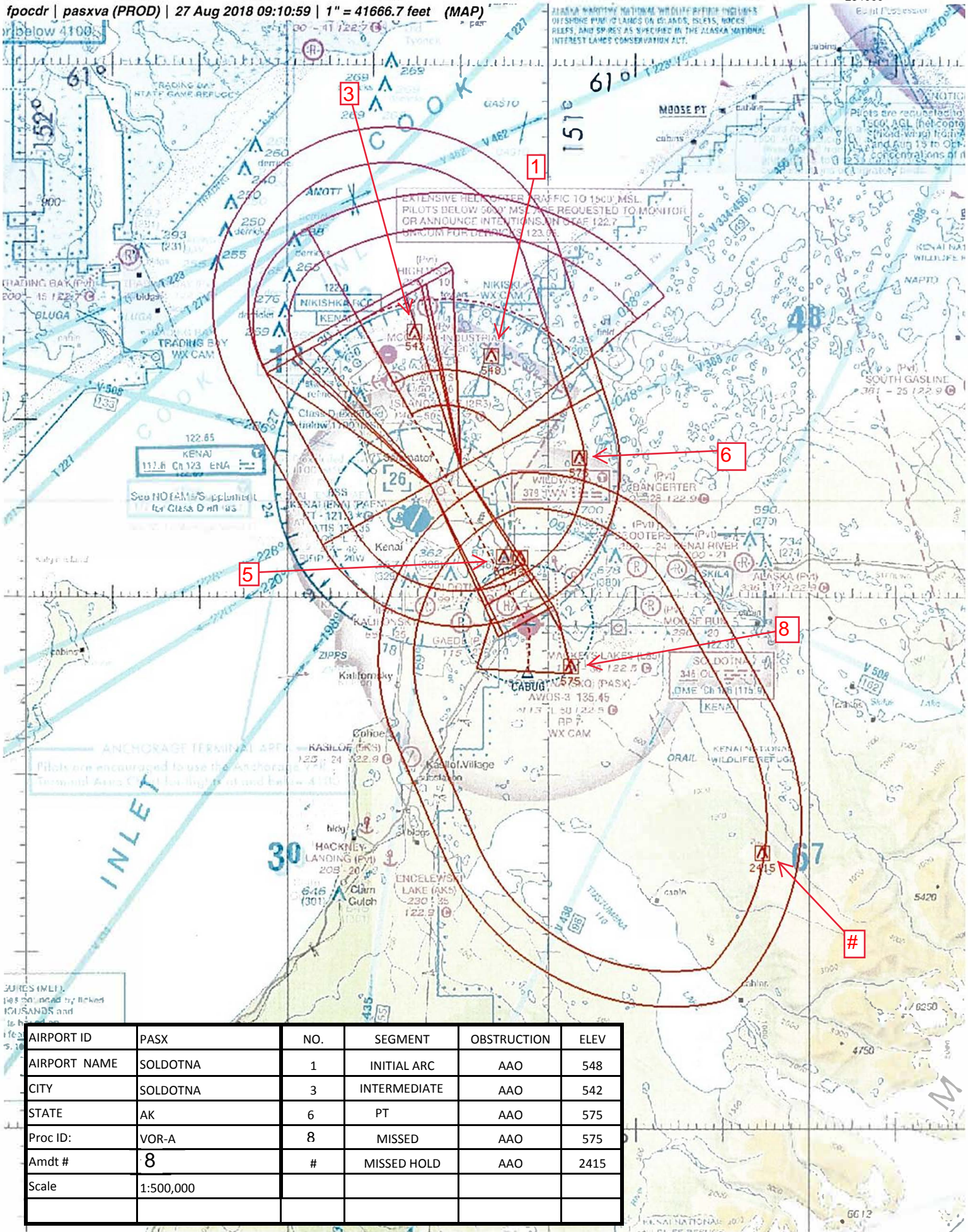
AWOS-3 135.45	ANCHORAGE CENTER 125.7 379.1	CTAF 122.5 0
-------------------------	--	------------------------



Remain within 10 NM	ENA VOR/DME 6000	3700 hdg 184°	ENA R-138	CABUG
1900	312°	1900	132°	1900
9.4 NM				
ZIDVA ENA 9.4				
CATEGORY	A	B	C	D
C CIRCLING	1020-1¼ 907 (1000-1¼)		1020-2¾ 907 (1000-2¾)	1020-3 907 (1000-3)

AK, 21 JUL 2016 to 15 SEP 2016

AK, 21 JUL 2016 to 15 SEP 2016



AIRPORT ID	PASX	NO.	SEGMENT	OBSTRUCTION	ELEV
AIRPORT NAME	SOLDOTNA	1	INITIAL ARC	AAO	548
CITY	SOLDOTNA	3	INTERMEDIATE	AAO	542
STATE	AK	6	PT	AAO	575
Proc ID:	VOR-A	8	MISSED	AAO	575
Amdt #	8	#	MISSED HOLD	AAO	2415
Scale	1:500,000				

NM 1 2 3 4 5 6 7 8 9 10 11 12 13 14
FT 8000 16000 24000 32000 40000 48000 56000 64000 72000 80000

fpocdr | pasxva (PROD) | 12 Sep 2018 09:20:22 | 1" = 8333.3 feet (MAP)

AIRPORT ID	PASX	NO.	SEGMENT	OBSTRUCTION	ELEV
AIRPORT NAME	SOLDOTNA	5	FINAL	TOWER	513
CITY	SOLDOTNA	10	CIRCLING CAT A	ANTENNA	434
STATE	AK	11	CIRCLING CAT B	ANTENNA	463
		12	CIRCLING CAT C	TREE	509
Proc ID:	VOR-A	13	CIRCLING CAT D	AAO	672
Amdt #	8				
Scale	1:100,000				

