

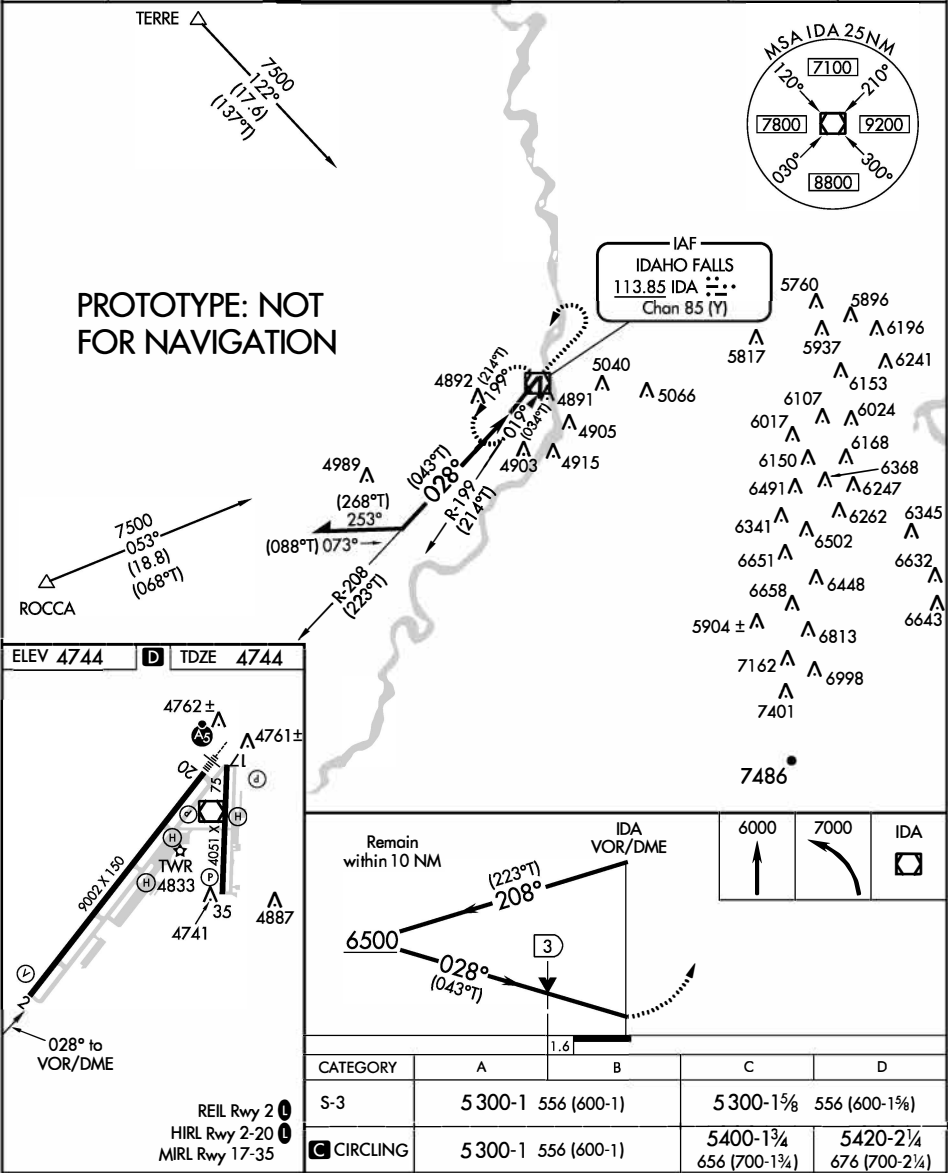
<b>Flight Procedure Tracking Form</b>		<b>Action:</b> FLIGHT CHECK	<b>Task Type:</b> IAP	<b>Date Open:</b> 07/08/2015	<b>Task #:</b> 2015070830148701007	<b>Request #:</b> 20150708301487
<b>Procedure:</b> VOR RWY 3 AMDT 6D			<b>Airport ID:</b> KIDA	<b>Airport:</b> IDAHO FALLS RGNL		<b>Reimbursable #:</b> NO
<b>City:</b> IDAHO FALLS	<b>ST:</b> ID	<b>GPS #:</b>	<b>Estimated Chart Date:</b> 01/03/2019		<b>FICO #:</b> 1217732	
<b>Fac ID:</b> IDA		<b>Fac. Type:</b> VOR_DME			<b>Specialist:</b> CHARLES THIBODEAUX	
<b>Procedure Review</b>						
	<b>Rec'd</b>	<b>Rel'd</b>	<b>Full Name</b>	<b>Comments</b>		
<b>Lead:</b>	03/07/2018	10/24/2018	WARDELL HENNING	QUALITY		
<b>QA:</b>	10/24/2018	10/25/2018	KISSY MAXFIELD	4	11/16CTabaka	
<b>Liaison:</b>	09/07/2018	09/07/2018	MARY MCDONALD	CHECKED		
<b>Procedure Comments:</b>			<b>ENROUTE-NON</b>			
			<b>Remark Type:</b> INFORMATION			
<p>CHANGED RUNWAYS FROM 02/20 TO 03/21 FOR AIRPORT MAGVAR UPDATE.          APPLIED NEW CIRCLING RADII.          CONTACT LONNIE EVERHART: 405.954.4576</p> <p>11/9/18: THIS IS A CORRECTED COPY OF THE FORM APPROVED ON 11/23/18.          1. ADDED MISSING ADDITIONAL FLIGHT DATA "HOLD S, LT, 019.00 INBOUND".</p>						

VOR/DME IDA <b>113.85</b> Chan <b>85 (Y)</b>	APP CRS <b>028°</b>	Rwy Idg TDZE Apt Elev <b>4744</b>
<b>9002</b>		
<b>4744</b>		

VOR RWY 3  
IDAHO FALLS RGNL (IDA)

ATIS <b>135.325</b>		SALT LAKE CENTER <b>128.35 239.25</b>		IDAHO FALLS TOWER* <b>118.5 (CTAF) 0 257.8</b>		GND CON <b>121.7</b>	CLNC DEL <b>121.7</b>	GCO <b>121.725</b>	UNICOM <b>122.95</b>
------------------------	--	------------------------------------------	--	---------------------------------------------------	--	-------------------------	--------------------------	-----------------------	-------------------------

MISSED APPROACH: Climb to 6000 then climbing left turn to 7000 direct IDA VOR/DME and hold.



# Magnetic Variation (MV) Declination Request

☐ New Assignment    ☒ Change

Requested by: LONNIE EVERHART

Organization: AJV-5310

Phone:

Current Magnetic Declination of Record: 15 ° East

Epoch Year: 1990

New Magnetic Declination of Record: 12 ° East

Epoch Year: 2020

## Airport Information

Airport ID: KIDA

NASR ID (if different): IDA

Airport Name: IDAHO FALLS RGNL

Airport City: IDAHO FALLS

State/Country: ID

## Navigational Aid Information [ALL Facility IDs and Types]

\* Facilities on Airports. At airports with localizer(s) or more than one navigational aid, the MV at the airport reference point (ARP) must be designated and assigned to all facilities at that airport, including all components of the ILS.

I-IDA

IDA NDB/C

Concurrent with Publication of Procedure(s), list all affected procedures and include the AMDT.#

\* The Procedure Tracking System (PTS) has Task Report Type "MAGVAR" available. Please add the MAGVAR Report Type Code to all task listed that are affected by the MV update.

IDAHO FALLS ID KIDA AMDT 4A  
LOC BC RWY 3 AMDT 6D  
ILS OR LOC RWY 21 AMDT 11J  
RNAV (RNP) Z RWY 3 ORIG-C  
RNAV (RNP) Z RWY 21 ORIG-D  
RNAV (GPS) Y RWY 3 AMDT 1B  
RNAV (GPS) Y RWY 21 AMDT 1E  
VOR RWY 3 AMDT 6D  
VOR RWY 21 AMDT 10B

PTS Estimated Chart Date: 2018-09-13 - TPP

Comments:

AIRPORT MAGVAR AND RWY NUMBER CHANGES (VOR NOT OUT OF TOLERANCE SO DIDN'T ADD IT)

**Form Submission for Specialists:**  
Save this form to your computer, then email it  
(as an attachment) to your Manager/Supervisor.

**For Lead/Manager Use Only**

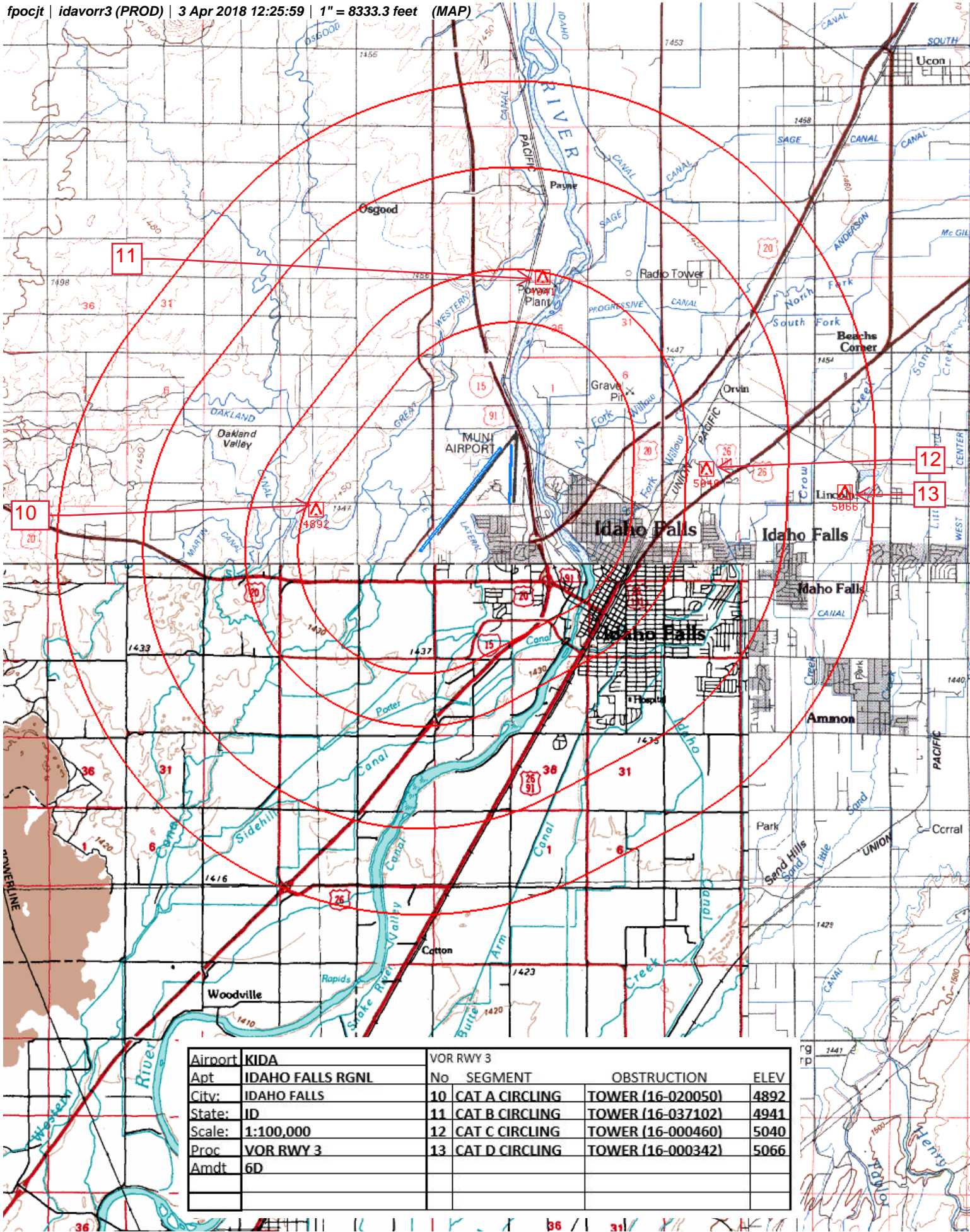
Comments (if applicable):

Lead/Manager:

Phone:

Submit to IFP Coordination Team

*fpocjt | idavorr3 (PROD) | 3 Apr 2018 12:25:59 | 1" = 8333.3 feet (MAP)*



Airport:	KIDA	VOR RWY 3			
Apt:	IDAHO FALLS RGNL	No	SEGMENT	OBSTRUCTION	ELEV
City:	IDAHO FALLS	10	CAT A CIRCLING	TOWER (16-020050)	4892
State:	ID	11	CAT B CIRCLING	TOWER (16-037102)	4941
Scale:	1:100,000	12	CAT C CIRCLING	TOWER (16-000460)	5040
Proc:	VOR RWY 3	13	CAT D CIRCLING	TOWER (16-000342)	5066
Amdt	6D				

# Federal Aviation Administration

## Categorical Exclusion Declaration

**Date:** 04/03/2018

**IFP:** Sutton, Brandon (Brandon.Sutton@faa.gov)

**Airport Contact:** N/A

**Request ID:** KIDA\_180108\_04

**Single or Multiple Procedure:**

Multiple

**Procedure Name(s):**

Textual Departure, ILS or LOC RWY 20, LOC BC RWY 02, RNAV (RNP) Z RWY 02, RNAV (RNP) Z RWY 20, RNAV (GPS) Y RWY 02, RNAV (GPS) Y RWY 20, VOR RWY 02, VOR RWY 20.

**Procedure Request Description:**

Textual Departure - Update obstacle notes. Amend procedure to meet current criteria; no track changes. Remove RWY 17 departure instructions.

ILS or LOC RWY 20 - MAGVAR update/runway 20 becomes runway 21. Remove UCONN NDB. Remove TERRE to UCONN NDB feeder. Update circling to current criteria.

LOC BC RWY 02 - MAGVAR update/runway 02 becomes runway 03. Remove SWEDEN NDB. Remove ROCCA to SWEDEN NDB feeder. Update circling to current criteria.

RNAV (RNP) Z RWY 02 - MAGVAR update/runway 02 becomes runway 03.

RNAV (RNP) Z RWY 20 - MAGVAR update/runway 20 becomes

runway 21.

RNAV (GPS) Y RWY 02 - MAGVAR update/runway 02 becomes runway 03. Update circling to current criteria.

RNAV (GPS) Y RWY 20 - MAGVAR update/runway 20 becomes runway 21. Update circling to current criteria.

VOR RWY 02 - MAGVAR update/runway 02 becomes runway 03. Update circling to current criteria.

VOR RWY 20 - MAGVAR update/runway 20 becomes runway 21. Update circling to current criteria.

**Declaration of Exclusion:**

The FAA has reviewed the above referenced proposed action and it has been determined, by the undersigned, to be categorically excluded from further environmental documentation according to FAA Order 1050.1, "Environmental Impacts: Policies and Procedures." The implementation of this action will not result in any extraordinary circumstances in accordance with FAA Order 1050.1.

**Basis for this Determination:**

This review was conducted in accordance with policies and procedures in Department of Transportation Order 5610.1, "Procedures for Considering Environmental Impacts" and FAA Order 1050.1.

**The applicable Categorical Exclusion is:**

- 5-** Publication of existing air traffic control procedures that do  
**6.5.k:** not essentially change existing tracks, create new tracks, change altitude, or change concentration of aircraft on these tracks. (ATO, AVS)

**The above flight procedure has been developed within the accepted parameters.**

Concurrence/Reviewed By:

for Marina Landis

Date:

Title:

Approved By:

Date:

Title: