

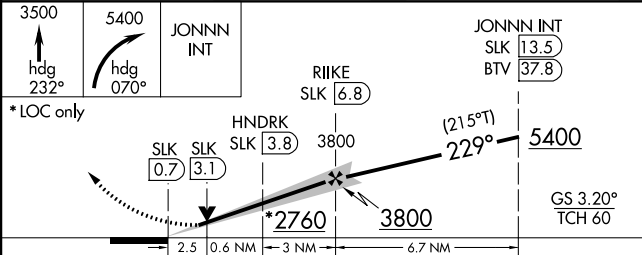
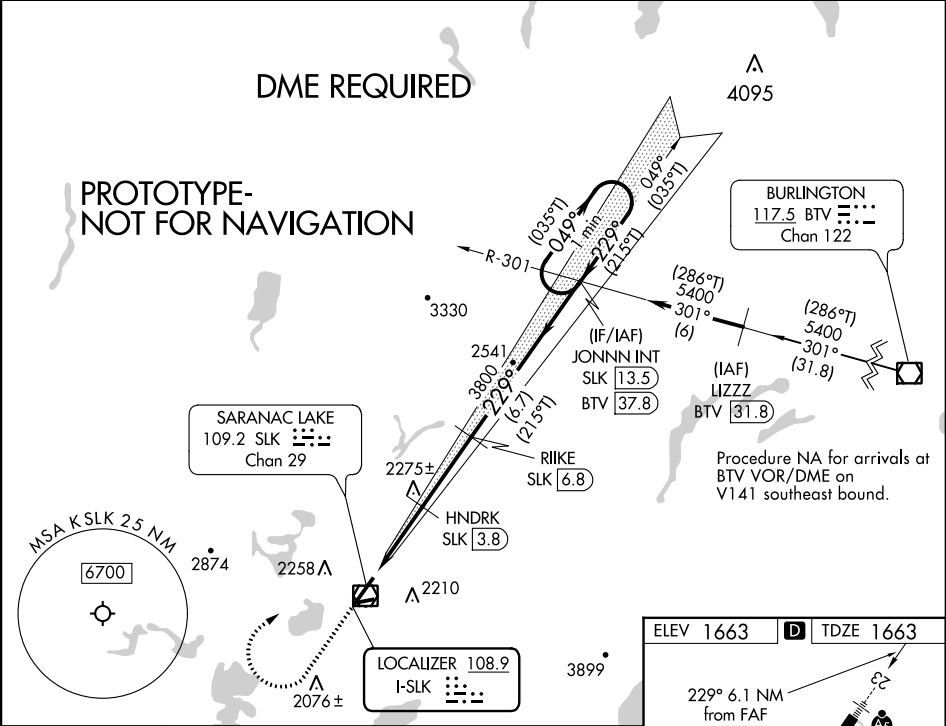
Flight Procedure Tracking Form		Action: FLIGHT CHECK	Task Type: IAP	Date Open: 07/06/2015	Task #: 2015070626140401001	Request #: 20150706261404
Procedure: ILS OR LOC RWY 23 AMDT 10			Airport ID: KSLK	Airport: ADIRONDACK RGNL		Reimbursable #: NO
City: SARANAC LAKE	ST: NY	GPS #:	Estimated Chart Date: 03/29/2018		FICO #:	
Fac ID: SLK		Fac. Type: ILS			Specialist: HEIDI SNIDER	
Procedure Review						
	Rec'd	Rel'd	Full Name	Comments		
Lead:	10/03/2017	01/04/2018	ROBERT HAMILTON	QUALITY		
QA:	01/04/2018	01/04/2018	ROBERT HAMILTON	4	1/11CTabaka	
Liaison:	01/04/2018	01/09/2018	MARY MCDONALD	CHECKED		
Procedure Comments:			ENROUTE-NON			
			Remark Type: INFORMATION			
<p>ACTIVE AIRPORT DATA PENDING SLK;ID DATA USED</p> <p>01/11/18: THIS IS AN UPDATED COPY OF THE FORM DEVELOPED ON 10/26/2017. 1. TERMINAL ROUTES SEGMENT TO JONNN INT/SLK 13.50 DME, ADDED (NOPT). 2. UPDATED FACILITIY IDENTIFIER FROM SLK TO I-SLK.</p> <p>CONTACT DION LANCIA, LEAD AJV-5420: 405-954-1267</p>						

VOR/DME SLK 109.2 Chan 29	APP CRS 229°	Rwy Idg TDZE Apt Elev	6367 1663 1663
---------------------------------	-----------------	-----------------------------	----------------------

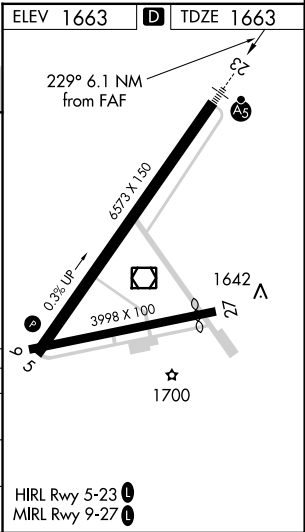
ILS or LOC RWY 23
ADIRONDACK RGNL (SLK)

<p>T A -26°C</p>	<p>Circling to Rwy 5, 9, 27 NA at night. Inop table does not apply to S-ILS 23. Rwy 23 helicopter visibility reduction below 3/4 SM NA. DME from SLK VOR/DME. Simultaneous reception of I-SLK and SLK DME required.</p>	<p>MALSR</p>	<p>MISSED APPROACH: Climb to 3500 on heading 232° then climbing right turn to 5400 on heading 070° to intercept I-SLK localizer course NE to JONNN INT/SLK 13.5 DME and hold.</p>
--	---	--------------	---

ASOS 124.175	BOSTON CENTER 120.35 342.25	UNICOM 123.0 (CTAF) 1
-----------------	--------------------------------	---------------------------------



CATEGORY	A	B	C	D
S-ILS 23	1863-3/4 200 (200-3/4)			
S-LOC 23	2580-3/4 917 (1000-3/4)	2580-2 917 (1000-1)		
CIRCLING	2580-1 1/4 917 (1000-1 1/4)	2660-1 1/2 997 (1000-1 1/2)	2660-3 997 (1000-3)	2680-3 1017 (1100-3)






SARANAC LAKE, NEW YORK

AL-806 (FAA)

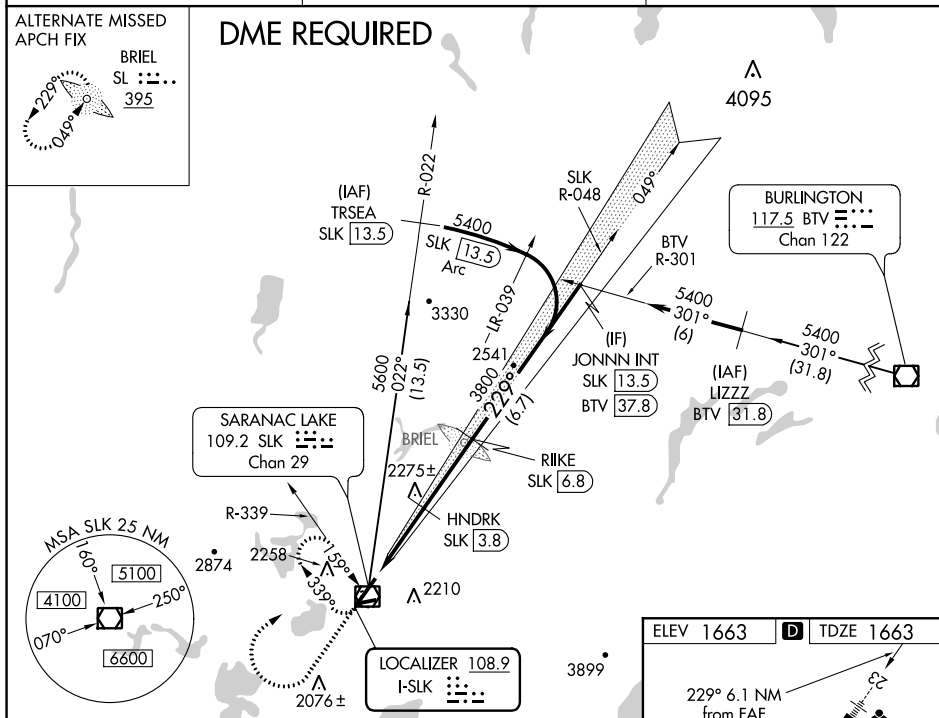
17229

LOC I-SLK 108.9	APP CRS 229°	Rwy Idg TDZE Apt Elev 6367 1663 1663
---------------------------	------------------------	--

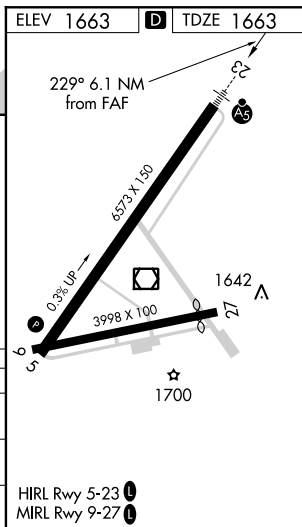
ILS or LOC/DME Z RWY 23 ADIRONDACK RGNL (SLK)

  -26°C	Night Landing: Rwy 5, 9, 27 NA. DME from SLK VOR/DME. Simultaneous reception of I-SLK and SLK DME required. Helicopter visibility reduction below $\frac{3}{4}$ SM NA.	MALSR 	MISSED APPROACH: Climb to 3500 on heading 232° then climbing right turn to 5000 direct SLK VOR/DME and hold, continue climb-in-hold to 5000.
--	---	--	--

ASOS 124.175	BOSTON CENTER 120.35 342.25	UNICOM 123.0 (CTAF) 0
------------------------	---------------------------------------	---------------------------------



3500 ↑ hdg 232°	5000 ↗ SLK	JONNN INT SLK 13.5 BTW 37.8		
*LOC only	SLK 0.7	HNDK SLK 3.8	RIIKE SLK 6.8	229° 5400
		GS 3.20° TCH 60		
3.1 NM		3 NM		6.7 NM
CATEGORY	A	B	C	D
S-ILS 23	1863-¾ 200 (200-¾)			
S-LOC 23	2580-¾ 917 (1000-¾)	2580-2 917 (1000-1)		
CIRCLING	2580-1¼ 917 (1000-1¼)	2660-1½ 997 (1000-1½)	2660-3	997 (1000-3)



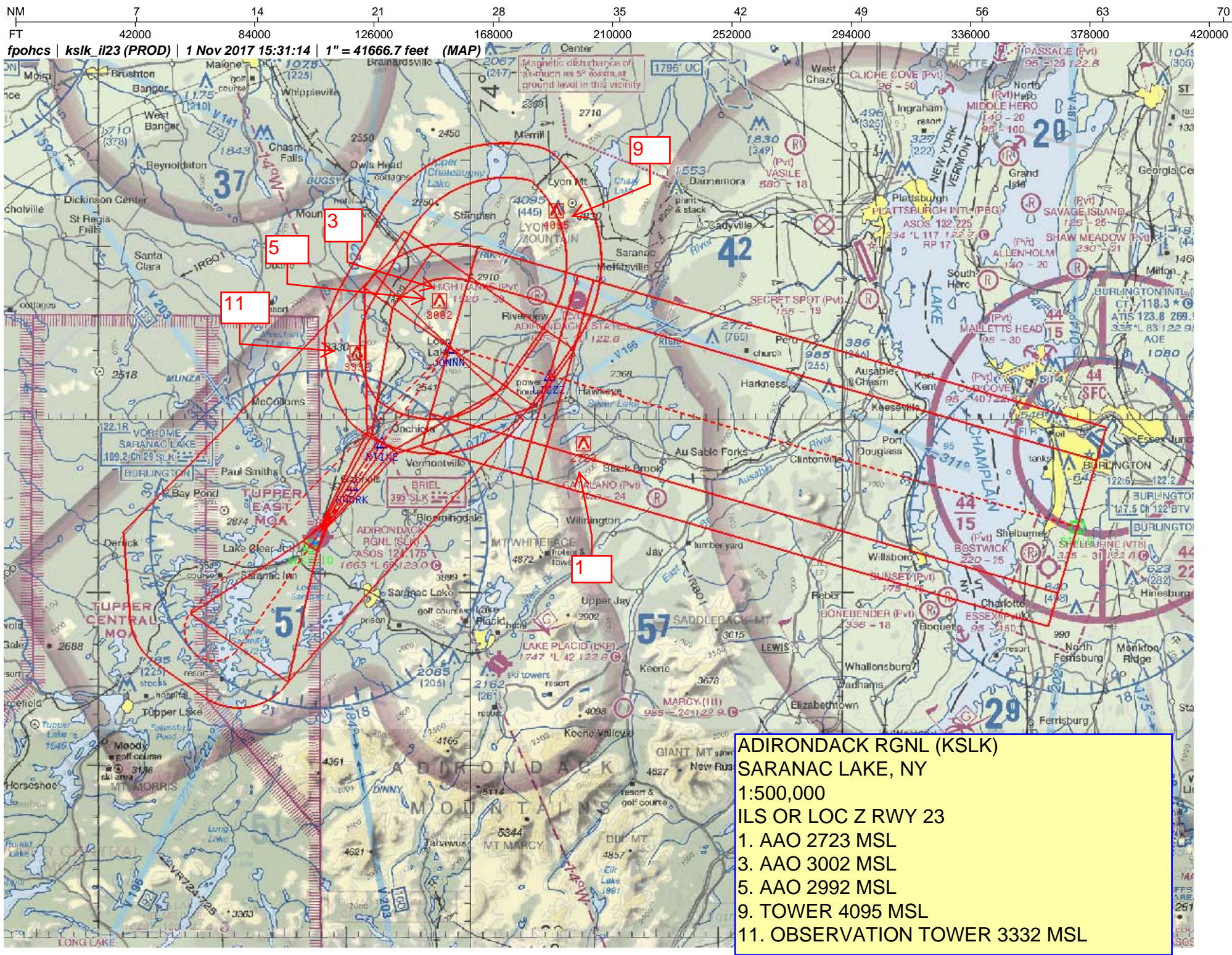
SARANAC LAKE, NEW YORK

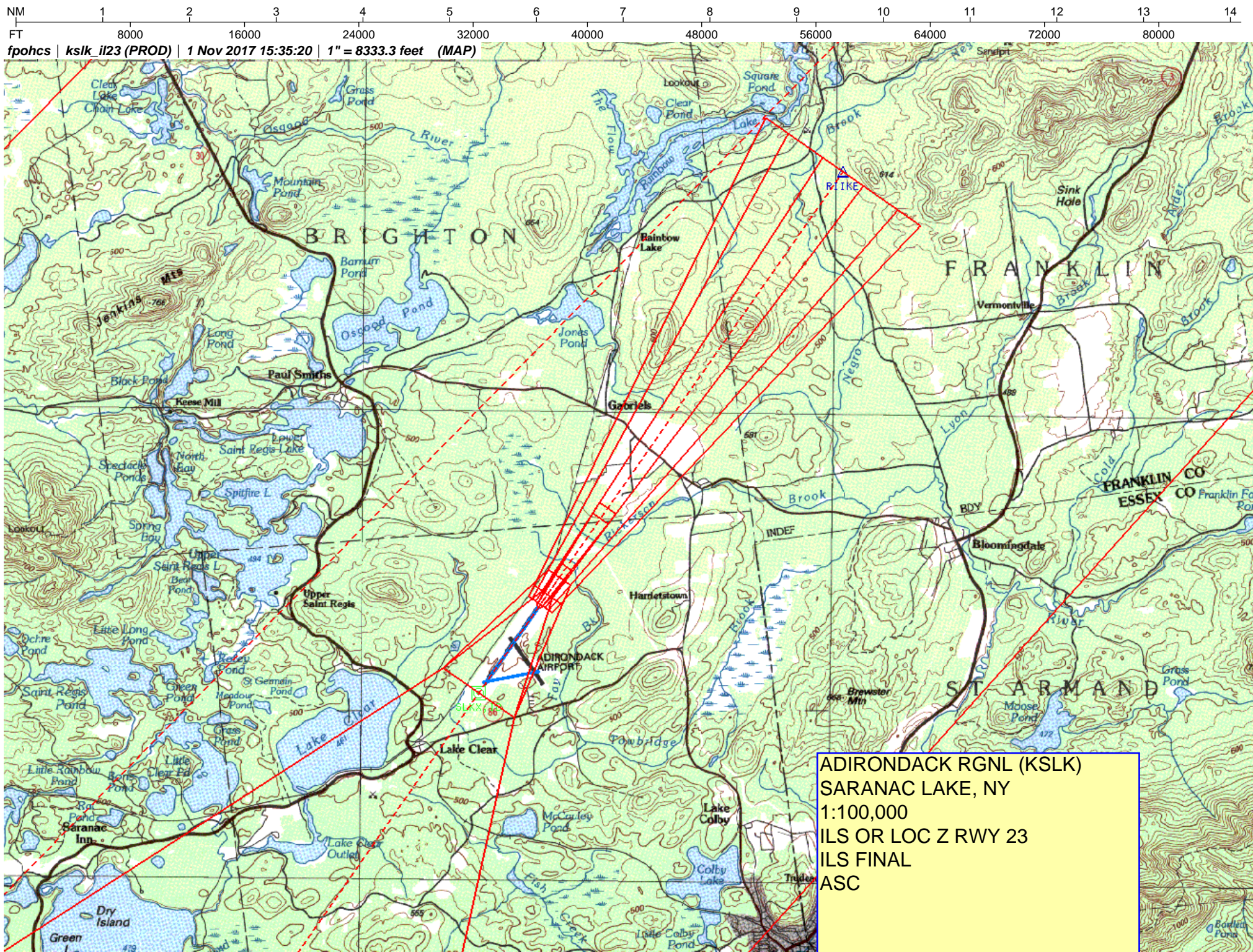
Amdt 9B 25JUN15

44°23'N-74°12'W

ADIRONDACK RGNL (SLK)

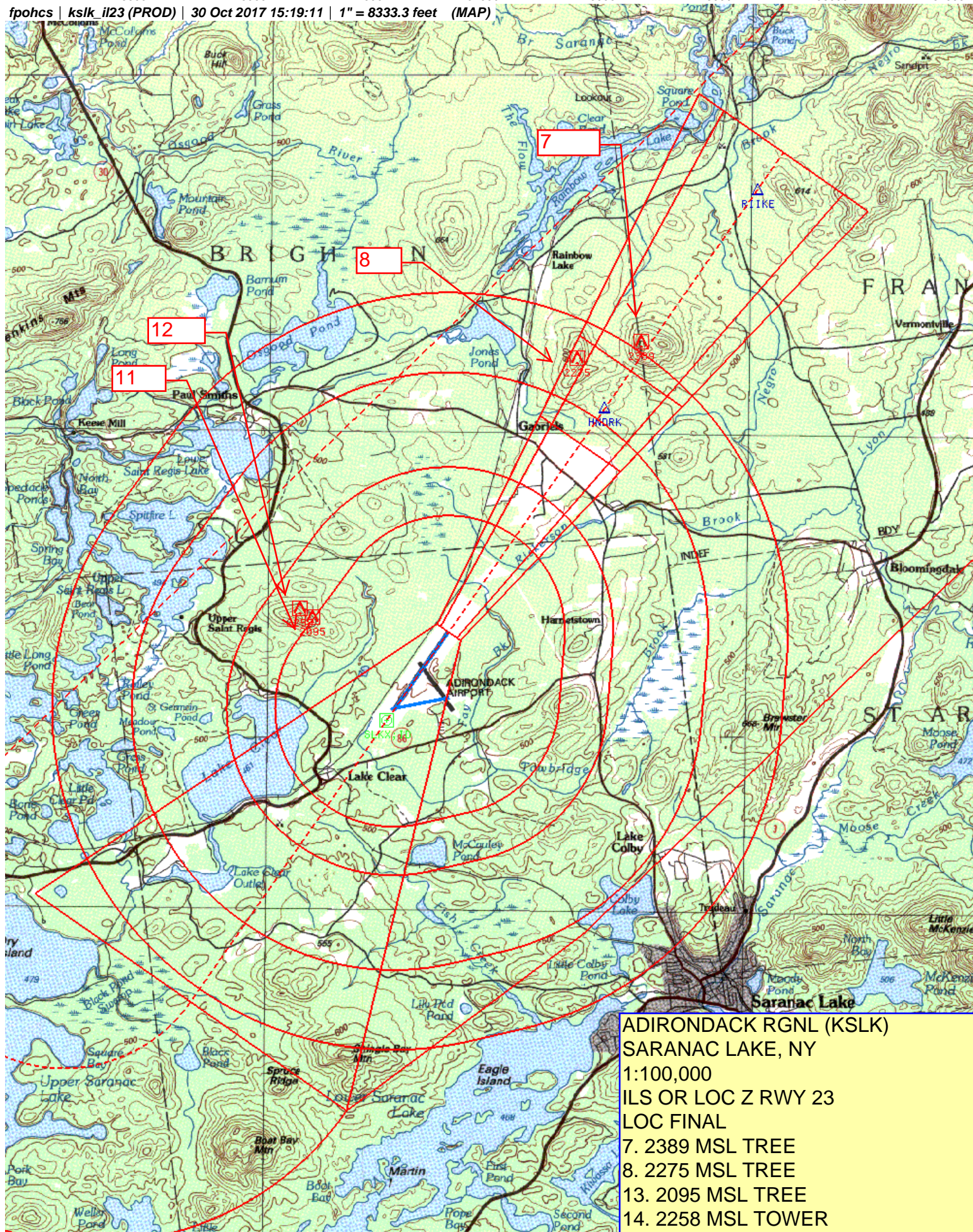
ILS or LOC/DME Z RWY 23





NM 1 2 3 4 5 6 7 8 9 10
FT 8000 16000 24000 32000 40000 48000 56000 64000

fpohcs | kslk_i23 (PROD) | 30 Oct 2017 15:19:11 | 1" = 8333.3 feet (MAP)



ADIRONDACK RGNL (KSLK)
SARANAC LAKE, NY
1:100,000
ILS OR LOC Z RWY 23
LOC FINAL
7. 2389 MSL TREE
8. 2275 MSL TREE
13. 2095 MSL TREE
14. 2258 MSL TOWER