

Name: William Roth
Project Name: KAUS ELOEL SID
Output File: KAUS ELOEL SID WLMRT
ABI 20161220_0901
Procedure Name: ELOEL
Software: RNAV-Pro™
Version: 2.39
Date/Time: 12/20/2016 9:03:58 AM
Input File: [KAUS ELOEL SID WLMRT
ABI 20161219_1424.txt](#)
Databases: AIRNAV Date: 12/9/2016
CIFP Date: 8/18/2016
DTED® (MAX) Date: 2002

Results Summary:

Flyability



DME/DME



No Critical DMEs Exist

Radars

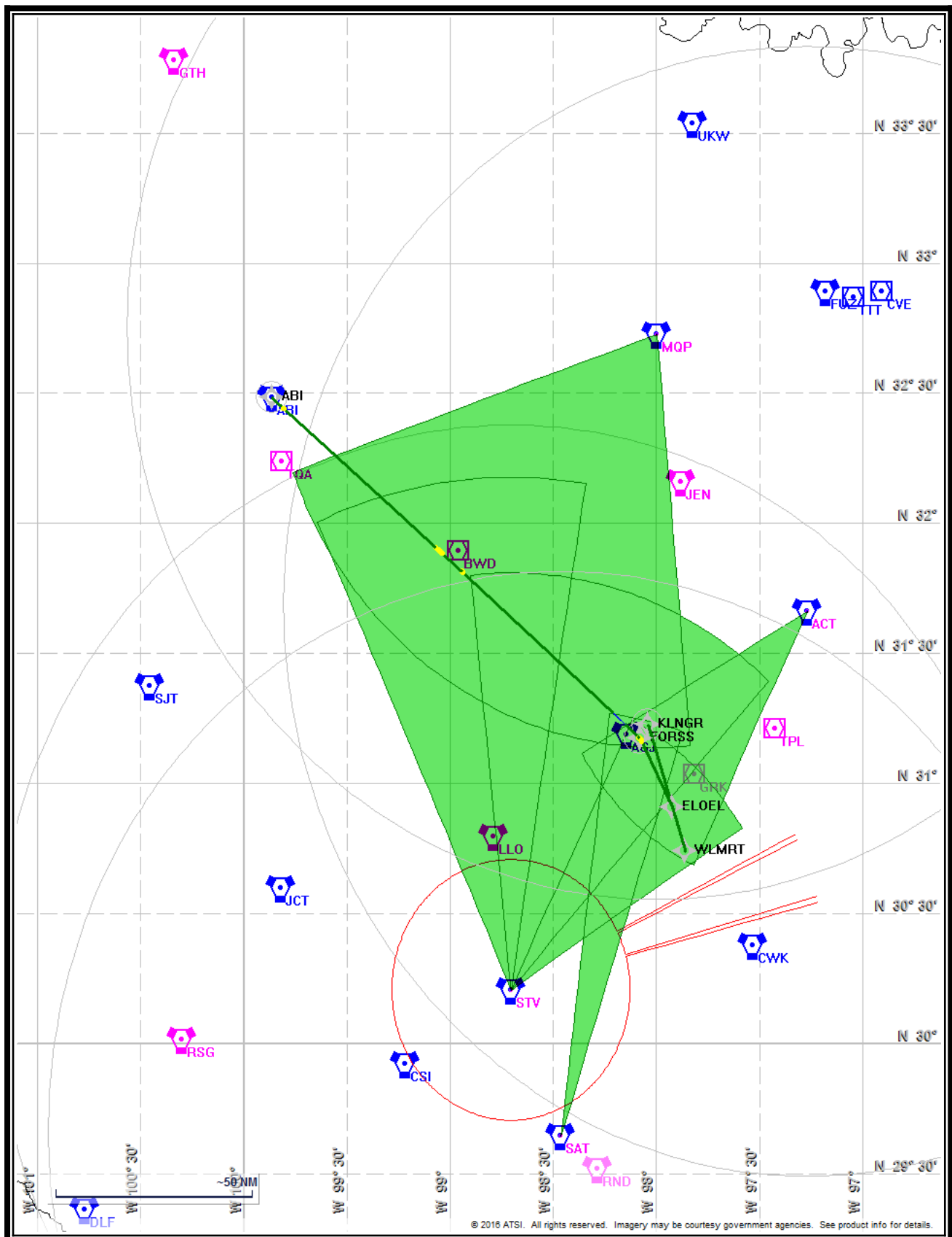


Comms



TERPS

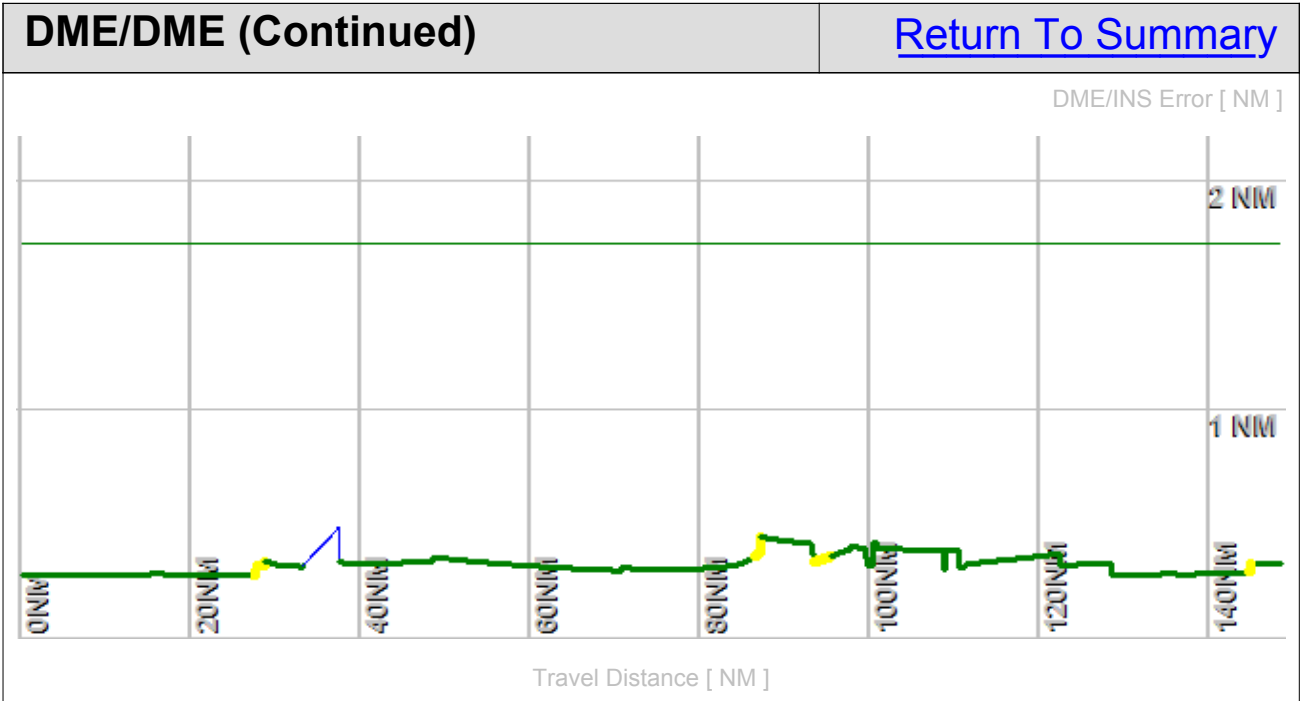




Flight Plan					Return To Summary		
Name	Type	Lat/Lon	Alt [ft]	VNAV Mode	IAS [Kts]	Turn Type	Leg Type
WLMRT	WP	N 30° 44' 26.82" W 97° 51' 33.59"	5000.0	Step	180.0	Fly By	TF
ELOEL	WP	N 30° 54' 19.31" W 97° 55' 14.06"	6900.0	VNAV	180.0	Fly By	TF
FORSS	WP	N 31° 10' 19.88" W 98° 4' 39.86"	10500.0	VNAV	240.0	Fly By	TF
ABI	WP	N 32° 28' 52.78" W 99° 51' 48.45"	18000.0	VNAV	240.0	Fly Over	TF

Flyability		Return To Summary
Settings:	Flight Type: Departure Transition Selected Airport: KAUS Aircraft Category: Cat D Climb Gradient: <i>None assigned</i> Ground Speeds: Table: 200.0 Kts up to 29000.0 ft 280.0 Kts up to 99900.0 ft Wind Settings: <i>None assigned</i> Descent During a Turn: Allowed VNAV Mode: Flight Plan	
	Entire track is fly-able	

DME/DME		Return To Summary
Settings:	RNP: 2.0	
	Flight Mode: Manual	
	Line of Sight (DTED Level 0 Max): Evaluated	
	DME Restrictions: Evaluated	
	Inertial Drift: Enabled	
	Initial Drift: 0.558 NM	
	INS Drift Rate: 8.000 NM/Hour	
	Range Mode: OSV	
	Co-Frequencies: Evaluated	
	RNP Edges: Evaluated	
	Min DME Range: 3.0 NM	
	Allowed Gap Length: 4.0 NM	
	DME Types: VOR/DME, VORTAC, Standalone, and User	
	DME Include Angles: 30 to 150	
	Critical DMEs: Allowed	
	DoD Facilities: Not included	
	Foreign Facilities: Not included	
Low DMEs: Included		
Terminal DMEs: Included		
Flight Check DMEs: Selected		
Higher Altitudes: Evaluated		
Near Maximum Altitude: Evaluated		
Total Number of DMEs Used: 11		
Maximum DME Error: 0.487 NM.		
No Critical DMEs were found.		
Available DMEs: STV, AGJ, CWK, TPL, ACT, SAT, MQP, BWD, TQA, ABI, SJT		
Foreign DMEs within range: ATM, OEX		

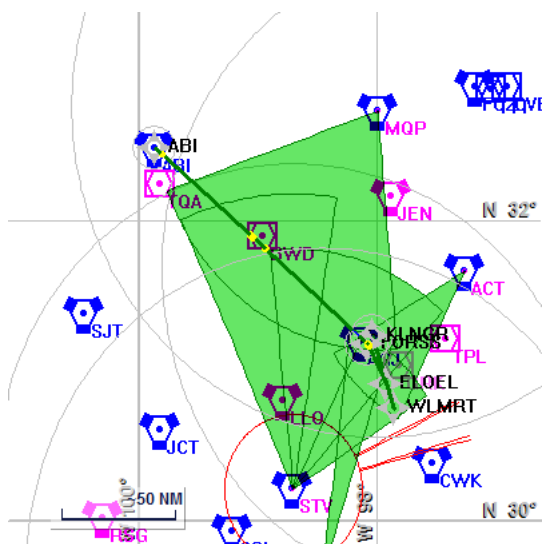


DME/DME (Continued)						Return To Summary			
DMEs Used									
#	Name	Lat/Lon/MAGVAR	Range	Source	Critical	Err. [NM]	Status	Time	Distance
1	STV	N 30° 12' 24.33" W 98° 42' 20.72" 08 E	H + ESV	User	NO	0.734	Enabled	29.6%	29.6%
2	CWK	N 30° 22' 42.78" W 97° 31' 47.45" 06 E	H	Database	NO	0.487	Enabled	6.7%	6.7%
3	TPL	N 31° 12' 33.61" W 97° 25' 29.88" 09 E	L	Database	NO	0.674	Enabled	9.4%	9.4%
4	AGJ	N 31° 11' 7.82" W 98° 8' 30.69" 05 E	H	Database	NO	1.036	Enabled	46.5%	46.5%
5	ACT	N 31° 39' 44.39" W 97° 16' 8.53" 09 E	H + ESV	User	NO	0.487	Enabled	5.8%	5.8%
6	SAT	N 29° 38' 38.51" W 98° 27' 40.73" 08 E	H + ESV	User	NO	0.487	Enabled	1.6%	1.6%
7	MQP	N 32° 43' 34.25" W 97° 59' 50.79" 09 E	H + ESV	User	NO	1.410	Enabled	50.7%	50.7%
8	BWD	N 31° 53' 33.30" W 98° 57' 26.86" 08 E	L	Database	NO	0.597	Enabled	14.1%	14.1%
9	TQA	N 32° 14' 8.68" W 99° 49' 0.42" 10 E	L	Database	NO	0.487	Enabled	4.5%	4.5%
10	ABI	N 32° 28' 52.78" W 99° 51' 48.45" 10 E	H	Database	NO	0.563	Enabled	11.8%	11.8%
11	SJT	N 31° 22' 29.83" W 100° 27' 17.55" 10 E	H	Database	NO	0.487	Enabled	13.5%	13.5%
	Total Coverage							97.1%	97.1%
Flight Check DME Selection									
Distance [NM]		Selected DMEs						Alternate	
0.0		STV	CWK	AGJ	TPL	ACT			
10.0		STV	CWK	AGJ	TPL	ACT	SAT		
27.7		STV	SAT	AGJ	TPL	MQP	ACT		
51.2		STV	AGJ	BWD	MQP				
99.7		STV	ABI	TQA	ACT	MQP	BWD		
110.6		AGJ	ABI	TQA	BWD	MQP			
122.5		AGJ	ABI	TQA	SJT	MQP	BWD		
132.6		ABI	TQA	SJT	MQP				

DME/DME (Continued)			Return To Summary
<i>Inertial Drift Segments</i>			
#	Start Location	End Location	Length [NM]
1	N 31° 13' 37.08" W 98° 9' 1.97"	N 31° 16' 23.78" W 98° 12' 44.88"	4.2
	VOR: AGJ	Available from N 31° 13' 37.08" W 98° 9' 1.97" to N 31° 16' 23.78" W 98° 12' 44.88"	
	VOR: TPL	Available from N 31° 13' 37.08" W 98° 9' 1.97" to N 31° 15' 48.69" W 98° 11' 57.94"	
	VOR: GRK	Available from N 31° 13' 37.08" W 98° 9' 1.97" to N 31° 16' 23.78" W 98° 12' 44.88"	

Available DMEs by Waypoints		Return To Summary
Waypoint Before	Waypoint After	DME List
WLMRT	ELOEL	STV, ACT, AGJ, CWK, and TPL
ELOEL	FORSS	STV, ACT, AGJ, CWK, TPL, and SAT*
FORSS	ABI	SAT, MQP, STV, ACT, ABI, AGJ, BWD, SJT, TPL, and TQA

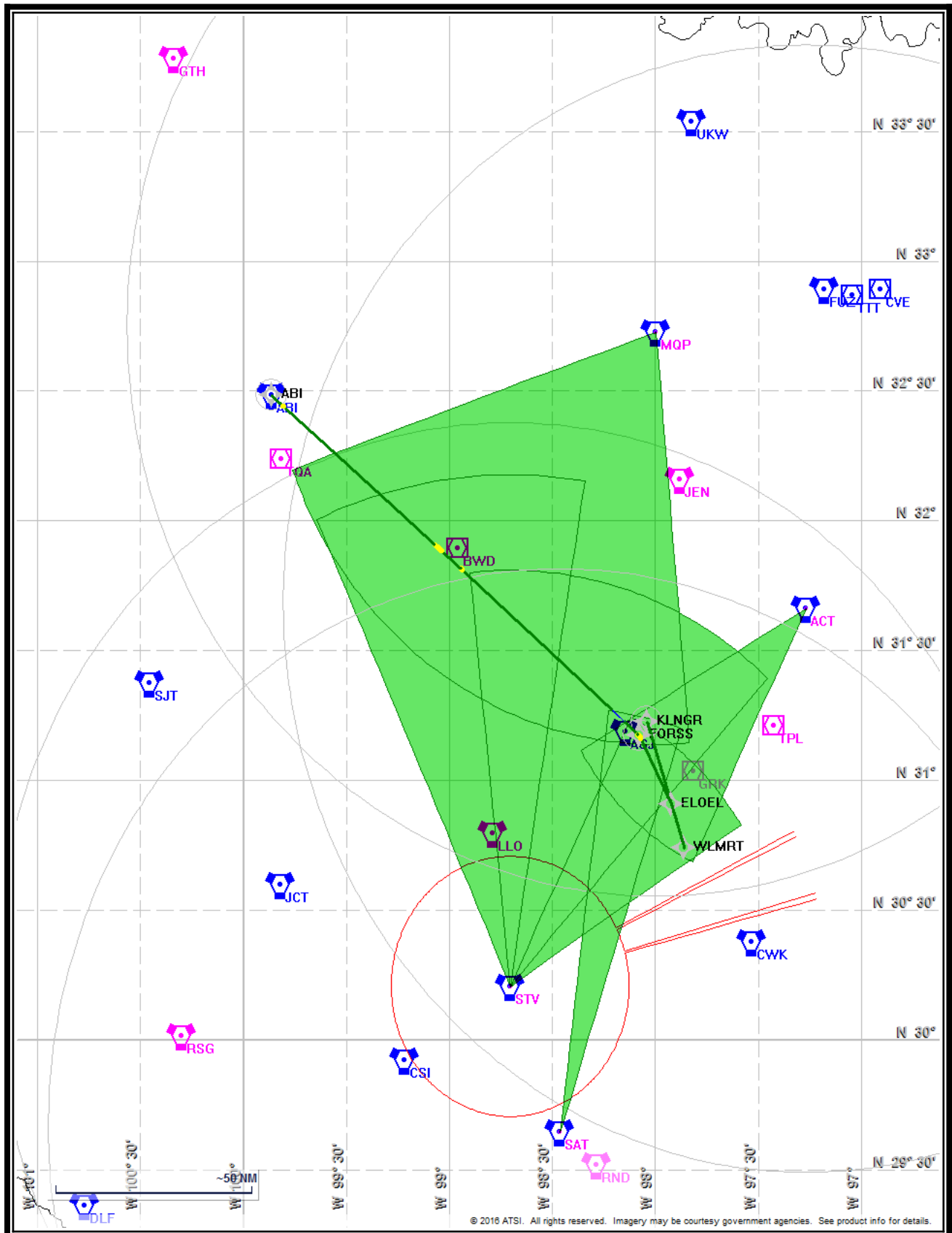
User Data					Return To Summary		
User Data Files							
#	File Name						
1	UserDMEs_KAUS ELOEL SID WLMRT ABI 20161219_1441.udt						
User DMEs							
#	Name	Lat/Lon/MAGVAR	Range	Elevation [ft]	Frequency	Replaces	Status
1	ACT	N 31° 39' 44.39" W 97° 16' 8.53" 09 E	H	510.0	115.30	ACT	Used
		ESV:	Bearing [True]: 206.0° to 240.0° Bearing [Mag]: 197.0° to 231.0°		Arc Distance: Out to 65.0 NM Altitude: 4200.0 to 16000.0 ft		
2	STV	N 30° 12' 24.33" W 98° 42' 20.72" 08 E	H	1530.0	113.80	STV	Used
		Restriction:	Bearing [True]: 75.0° to 63.0° Bearing [Mag]: 67.0° to 55.0°		Distance: Beyond 30.0 NM Altitude: Below 3300.0 ft		
		Restriction:	Bearing [True]: 64.0° to 74.0° Bearing [Mag]: 56.0° to 66.0°		Distance: Beyond 30.0 NM Altitude: Below 3000.0 ft		
		ESV:	Bearing [True]: 354.0° to 42.0° Bearing [Mag]: 346.0° to 34.0°		Arc Distance: Out to 96.0 NM Altitude: 10200.0 to 18000.0 ft		
		ESV:	Bearing [True]: 26.0° to 57.0° Bearing [Mag]: 18.0° to 49.0°		Arc Distance: Out to 69.0 NM Altitude: 5000.0 to 18000.0 ft		
		ESV:	Bearing [True]: 336.0° to 9.0° Bearing [Mag]: 328.0° to 1.0°		Arc Distance: Out to 118.0 NM Altitude: 13100.0 to 18000.0 ft		
3	MQP	N 32° 43' 34.25" W 97° 59' 50.79" 09 E	H	900.0	117.70	MQP	Used
		ESV:	Bearing [True]: 175.0° to 251.0° Bearing [Mag]: 166.0° to 242.0°		Arc Distance: Out to 95.0 NM Altitude: 8500.0 to 18000.0 ft		
4	SAT	N 29° 38' 38.51" W 98° 27' 40.73" 08 E	H	1160.0	116.80	SAT	Used
		ESV:	Bearing [True]: 7.0° to 18.0° Bearing [Mag]: 359.0° to 10.0°		Arc Distance: Out to 98.0 NM Altitude: 9900.0 to 16000.0 ft		



Name: William Roth
Project Name: KAUS ELOEL SID
Output File: KAUS ELOEL SID ELOEL FORSS 20161220_0901
Procedure Name: ELOEL
Software: RNAV-Pro™
Version: 2.39
Date/Time: 12/20/2016 9:02:20 AM
Input File: [KAUS ELOEL SID ELOEL FORSS 20161219_1425.txt](#)
Databases: AIRNAV Date: 12/9/2016
 CIPF Date: 8/18/2016
 DTED® (MAX) Date: 2002

Results Summary:

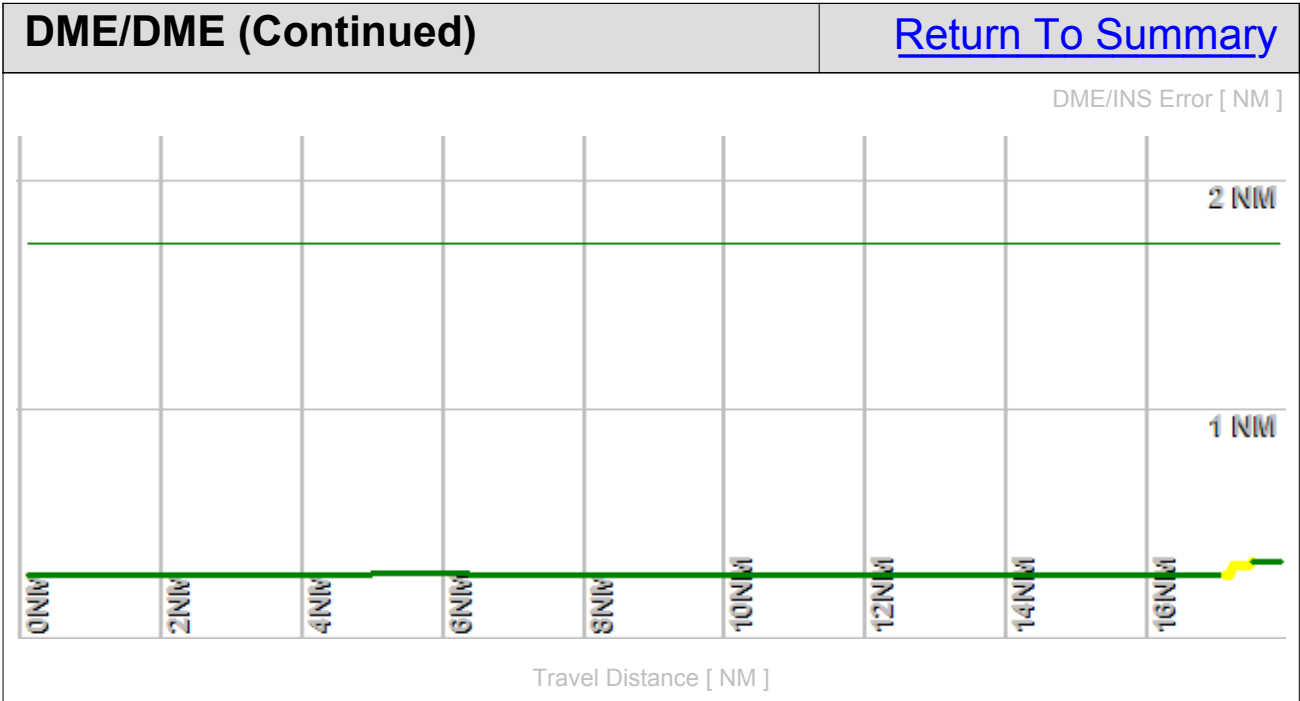
Flyability	✓	
DME/DME	✓	No Critical DMEs Exist
Radars	?	
Comms	?	
TERPS	?	



Flight Plan					Return To Summary		
Name	Type	Lat/Lon	Alt [ft]	VNAV Mode	IAS [Kts]	Turn Type	Leg Type
ELOEL	WP	N 30° 54' 19.31" W 97° 55' 14.06"	6900.0	VNAV	180.0	Fly By	TF
FORSS	WP	N 31° 10' 19.88" W 98° 4' 39.86"	10500.0	VNAV	240.0	Fly Over	TF

Flyability		Return To Summary
Settings:	Flight Type: Departure Transition Selected Airport: KAUS Aircraft Category: Cat D Climb Gradient: <i>None assigned</i> Ground Speeds: Table: 200.0 Kts up to 29000.0 ft 280.0 Kts up to 99900.0 ft Wind Settings: <i>None assigned</i> Descent During a Turn: Allowed VNAV Mode: Flight Plan	
	Entire track is fly-able	

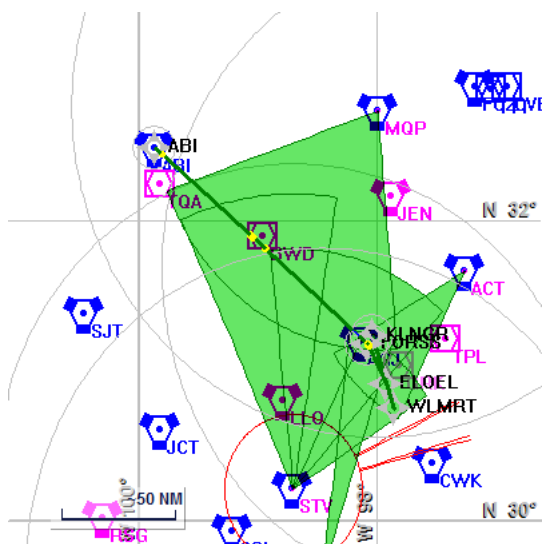
DME/DME		Return To Summary
Settings:	RNP: 2.0	
	Flight Mode: Manual	
	Line of Sight (DTED Level 0 Max): Evaluated	
	DME Restrictions: Evaluated	
	Inertial Drift: Enabled	
	Initial Drift: 0.558 NM	
	INS Drift Rate: 8.000 NM/Hour	
	Range Mode: OSV	
	Co-Frequencies: Evaluated	
	RNP Edges: Evaluated	
	Min DME Range: 3.0 NM	
	Allowed Gap Length: 4.0 NM	
	DME Types: VOR/DME, VORTAC, Standalone, and User	
	DME Include Angles: 30 to 150	
	Critical DMEs: Allowed	
DoD Facilities: Not included		
Foreign Facilities: Not included		
Low DMEs: Included		
Terminal DMEs: Included		
Flight Check DMEs: Selected		
Higher Altitudes: Evaluated		
Near Maximum Altitude: Evaluated		
Total Number of DMEs Used: 5		
Maximum DME Error: 0.336 NM.		
No Critical DMEs were found.		
Available DMEs: ACT, STV, AGJ, CWK, TPL, SAT		



DME/DME (Continued)						Return To Summary			
DMEs Used									
#	Name	Lat/Lon/MAGVAR	Range	Source	Critical	Err. [NM]	Status	Time	Distance
1	AGJ	N 31° 11' 7.82" W 98° 8' 30.69" 05 E	H	Database	NO	0.862	Enabled	97.5%	97.5%
2	TPL	N 31° 12' 33.61" W 97° 25' 29.88" 09 E	L	Database	NO	0.484	Enabled	33.5%	33.5%
3	ACT	N 31° 39' 44.39" W 97° 16' 8.53" 09 E	H + ESV	User	NO	0.336	Enabled	45.0%	45.0%
4	STV	N 30° 12' 24.33" W 98° 42' 20.72" 08 E	H + ESV	User	NO	0.338	Enabled	19.9%	19.9%
5	SAT	N 29° 38' 38.51" W 98° 27' 40.73" 08 E	H + ESV	User	NO	0.338	Enabled	4.0%	4.0%
	Total Coverage							100.0%	100.0%
Flight Check DME Selection									
Distance [NM]		Selected DMEs						Alternate	
0.0		SAT	TPL	STV	AGJ	ACT	CWK		

Available DMEs by Waypoints		Return To Summary
Waypoint Before	Waypoint After	DME List
ELOEL	FORSS	SAT, STV, ACT, AGJ, TPL, and CWK*

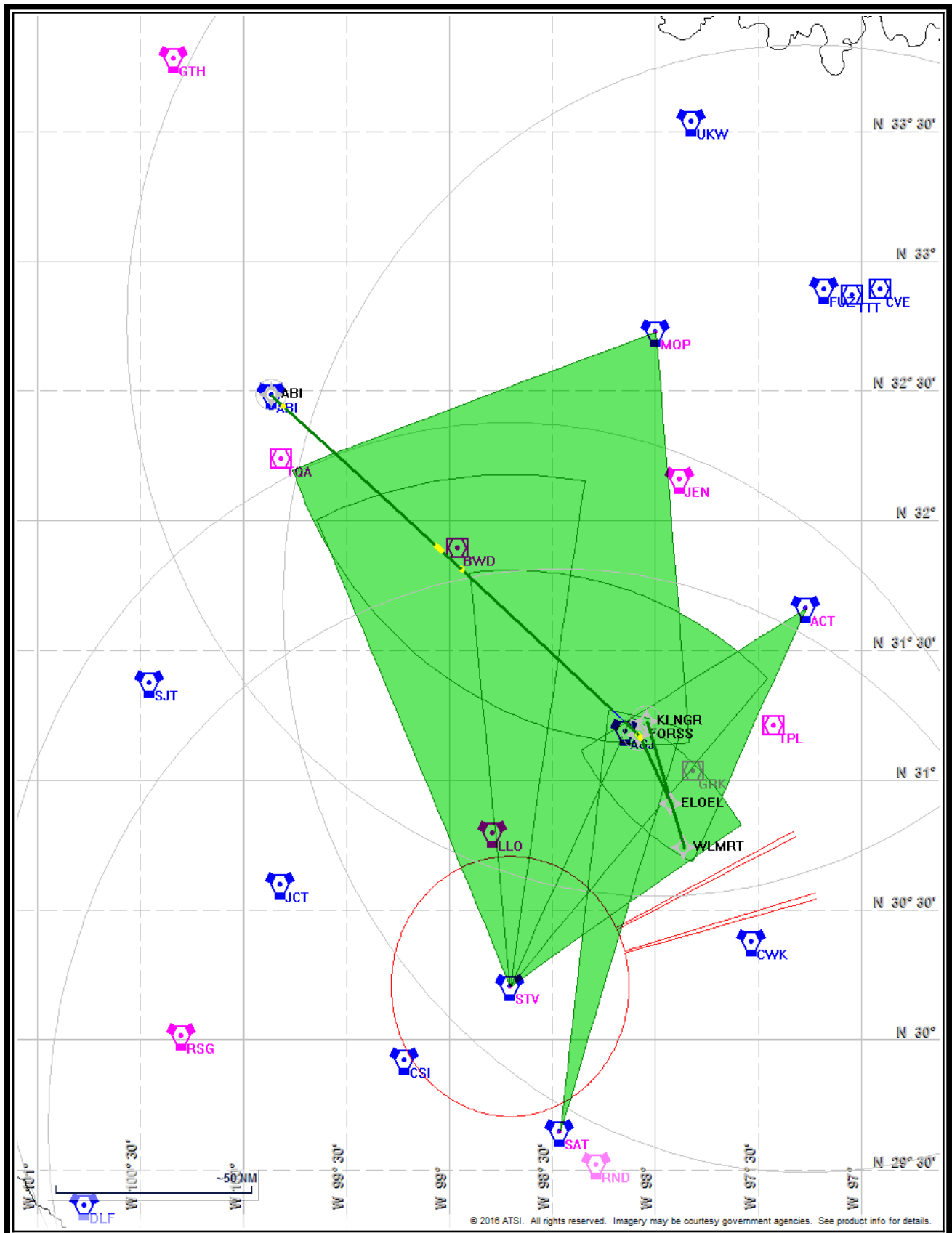
User Data					Return To Summary		
User Data Files							
#	File Name						
1	UserDMEs_KAUS ELOEL SID WLMRT ABI 20161219_1441.udt						
User DMEs							
#	Name	Lat/Lon/MAGVAR	Range	Elevation [ft]	Frequency	Replaces	Status
1	ACT	N 31° 39' 44.39" W 97° 16' 8.53" 09 E	H	510.0	115.30	ACT	Used
		ESV:	Bearing [True]: 206.0° to 240.0° Bearing [Mag]: 197.0° to 231.0°		Arc Distance: Out to 65.0 NM Altitude: 4200.0 to 16000.0 ft		
2	STV	N 30° 12' 24.33" W 98° 42' 20.72" 08 E	H	1530.0	113.80	STV	Used
		Restriction:	Bearing [True]: 75.0° to 63.0° Bearing [Mag]: 67.0° to 55.0°		Distance: Beyond 30.0 NM Altitude: Below 3300.0 ft		
		Restriction:	Bearing [True]: 64.0° to 74.0° Bearing [Mag]: 56.0° to 66.0°		Distance: Beyond 30.0 NM Altitude: Below 3000.0 ft		
		ESV:	Bearing [True]: 354.0° to 42.0° Bearing [Mag]: 346.0° to 34.0°		Arc Distance: Out to 96.0 NM Altitude: 10200.0 to 18000.0 ft		
		ESV:	Bearing [True]: 26.0° to 57.0° Bearing [Mag]: 18.0° to 49.0°		Arc Distance: Out to 69.0 NM Altitude: 5000.0 to 18000.0 ft		
		ESV:	Bearing [True]: 336.0° to 9.0° Bearing [Mag]: 328.0° to 1.0°		Arc Distance: Out to 118.0 NM Altitude: 13100.0 to 18000.0 ft		
3	MQP	N 32° 43' 34.25" W 97° 59' 50.79" 09 E	H	900.0	117.70	MQP	Not Used
		ESV:	Bearing [True]: 175.0° to 251.0° Bearing [Mag]: 166.0° to 242.0°		Arc Distance: Out to 95.0 NM Altitude: 8500.0 to 18000.0 ft		
4	SAT	N 29° 38' 38.51" W 98° 27' 40.73" 08 E	H	1160.0	116.80	SAT	Used
		ESV:	Bearing [True]: 7.0° to 18.0° Bearing [Mag]: 359.0° to 10.0°		Arc Distance: Out to 98.0 NM Altitude: 9900.0 to 16000.0 ft		



Name: William Roth
Project Name: KAUS ELOEL SID
Output File: KAUS ELOEL SID ELOEL
 KLNGR 20161220_0901
Procedure Name: ELOEL
Software: RNAV-Pro™
Version: 2.39
Date/Time: 12/20/2016 9:03:09 AM
Input File: [KAUS ELOEL SID ELOEL
 KLNGR 20161219_1425.txt](#)
Databases: AIRNAV Date: 12/9/2016
 CIPF Date: 8/18/2016
 DTED® (MAX) Date: 2002

Results Summary:

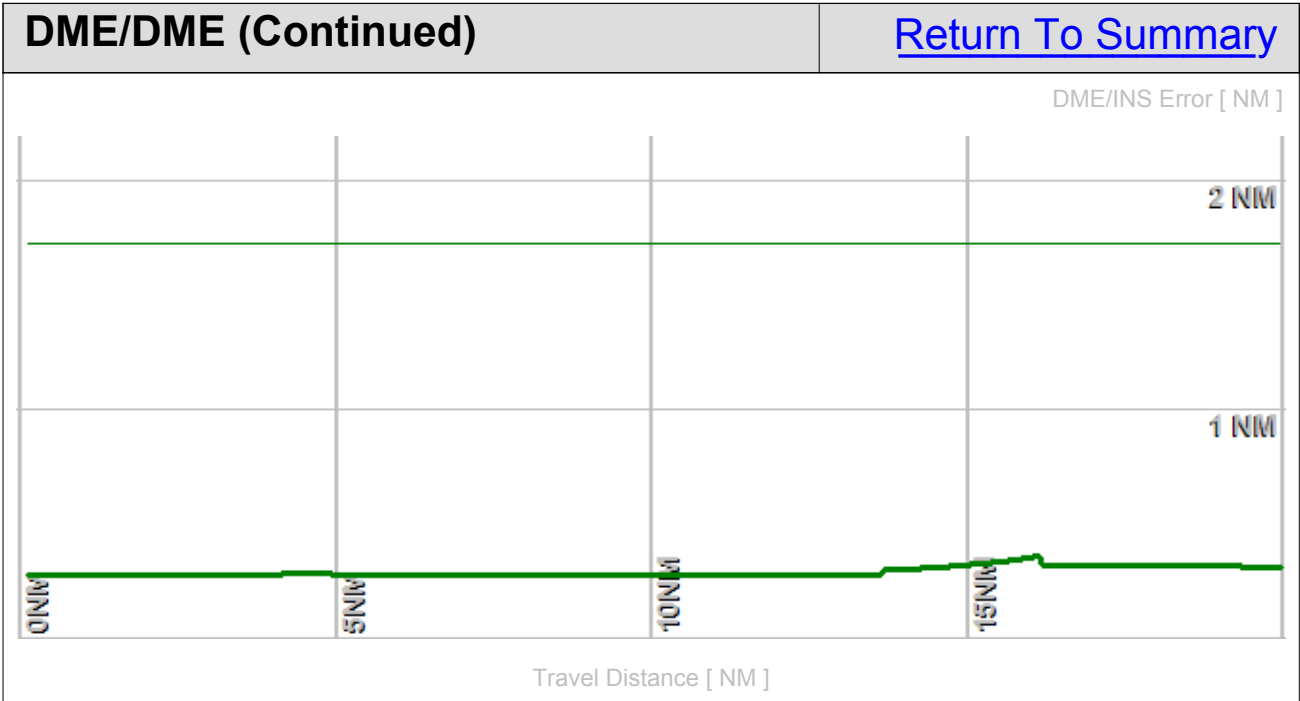
Flyability	✓	
DME/DME	✓	No Critical DMEs Exist
Radars	?	
Comms	?	
TERPS	?	



Flight Plan					Return To Summary		
Name	Type	Lat/Lon	Alt [ft]	VNAV Mode	IAS [Kts]	Turn Type	Leg Type
ELOEL	WP	N 30° 54' 19.31" W 97° 55' 14.06"	6900.0	VNAV	180.0	Fly By	TF
KLNGR	WP	N 31° 13' 24.79" W 98° 2' 19.85"	10500.0	VNAV	240.0	Fly Over	TF

Flyability		Return To Summary
Settings:	Flight Type: Departure Transition Selected Airport: KAUS Aircraft Category: Cat D Climb Gradient: <i>None assigned</i> Ground Speeds: Table: 200.0 Kts up to 29000.0 ft 280.0 Kts up to 99900.0 ft Wind Settings: <i>None assigned</i> Descent During a Turn: Allowed VNAV Mode: Flight Plan	
	Entire track is fly-able	

DME/DME		Return To Summary
Settings:	RNP: 2.0	
	Flight Mode: Manual	
	Line of Sight (DTED Level 0 Max): Evaluated	
	DME Restrictions: Evaluated	
	Inertial Drift: Enabled	
	Initial Drift: 0.558 NM	
	INS Drift Rate: 8.000 NM/Hour	
	Range Mode: OSV	
	Co-Frequencies: Evaluated	
	RNP Edges: Evaluated	
	Min DME Range: 3.0 NM	
	Allowed Gap Length: 4.0 NM	
	DME Types: VOR/DME, VORTAC, Standalone, and User	
	DME Include Angles: 30 to 150	
	Critical DMEs: Allowed	
	DoD Facilities: Not included	
Foreign Facilities: Not included		
Low DMEs: Included		
Terminal DMEs: Included		
Flight Check DMEs: Selected		
Higher Altitudes: Evaluated		
Near Maximum Altitude: Evaluated		
Total Number of DMEs Used: 5		
Maximum DME Error: 0.361 NM.		
No Critical DMEs were found.		
Available DMEs: ACT, STV, AGJ, CWK, TPL, MQP, SAT		



DME/DME (Continued)						Return To Summary			
DMEs Used									
#	Name	Lat/Lon/MAGVAR	Range	Source	Critical	Err. [NM]	Status	Time	Distance
1	AGJ	N 31° 11' 7.82" W 98° 8' 30.69" 05 E	H	Database	NO	0.894	Enabled	81.1%	81.1%
2	TPL	N 31° 12' 33.61" W 97° 25' 29.88" 09 E	L	Database	NO	0.406	Enabled	40.4%	40.4%
3	STV	N 30° 12' 24.33" W 98° 42' 20.72" 08 E	H + ESV	User	NO	0.361	Enabled	20.3%	20.3%
4	ACT	N 31° 39' 44.39" W 97° 16' 8.53" 09 E	H + ESV	User	NO	0.381	Enabled	39.0%	39.0%
5	MQP	N 32° 43' 34.25" W 97° 59' 50.79" 09 E	H + ESV	User	NO	0.507	Enabled	19.2%	19.2%
	Total Coverage							100.0%	100.0%
Flight Check DME Selection									
Distance [NM]		Selected DMEs						Alternate	
0.0		ACT	AGJ	MQP	TPL	STV	SAT		

Available DMEs by Waypoints		Return To Summary
Waypoint Before	Waypoint After	DME List
ELOEL	KLNGR	MQP, STV, ACT, AGJ, TPL, SAT*, and CWK*

User Data					Return To Summary		
User Data Files							
#	File Name						
1	UserDMEs_KAUS ELOEL SID WLMRT ABI 20161219_1441.udt						
User DMEs							
#	Name	Lat/Lon/MAGVAR	Range	Elevation [ft]	Frequency	Replaces	Status
1	ACT	N 31° 39' 44.39" W 97° 16' 8.53" 09 E	H	510.0	115.30	ACT	Used
		ESV:	Bearing [True]: 206.0° to 240.0° Bearing [Mag]: 197.0° to 231.0°		Arc Distance: Out to 65.0 NM Altitude: 4200.0 to 16000.0 ft		
2	STV	N 30° 12' 24.33" W 98° 42' 20.72" 08 E	H	1530.0	113.80	STV	Used
		Restriction:	Bearing [True]: 75.0° to 63.0° Bearing [Mag]: 67.0° to 55.0°		Distance: Beyond 30.0 NM Altitude: Below 3300.0 ft		
		Restriction:	Bearing [True]: 64.0° to 74.0° Bearing [Mag]: 56.0° to 66.0°		Distance: Beyond 30.0 NM Altitude: Below 3000.0 ft		
		ESV:	Bearing [True]: 354.0° to 42.0° Bearing [Mag]: 346.0° to 34.0°		Arc Distance: Out to 96.0 NM Altitude: 10200.0 to 18000.0 ft		
		ESV:	Bearing [True]: 26.0° to 57.0° Bearing [Mag]: 18.0° to 49.0°		Arc Distance: Out to 69.0 NM Altitude: 5000.0 to 18000.0 ft		
		ESV:	Bearing [True]: 336.0° to 9.0° Bearing [Mag]: 328.0° to 1.0°		Arc Distance: Out to 118.0 NM Altitude: 13100.0 to 18000.0 ft		
3	MQP	N 32° 43' 34.25" W 97° 59' 50.79" 09 E	H	900.0	117.70	MQP	Used
		ESV:	Bearing [True]: 175.0° to 251.0° Bearing [Mag]: 166.0° to 242.0°		Arc Distance: Out to 95.0 NM Altitude: 8500.0 to 18000.0 ft		
4	SAT	N 29° 38' 38.51" W 98° 27' 40.73" 08 E	H	1160.0	116.80	SAT	Not Used
		ESV:	Bearing [True]: 7.0° to 18.0° Bearing [Mag]: 359.0° to 10.0°		Arc Distance: Out to 98.0 NM Altitude: 9900.0 to 16000.0 ft		