

FEDERAL AVIATION ADMINISTRATION
FLIGHT STANDARDS SERVICE
STANDARD TERMINAL ARRIVAL (STAR)

Bearings, headings, courses, tracks and radials are magnetic. Elevations and altitudes are in feet, MSL. Altitudes are minimum altitudes unless otherwise indicated.
Distances are in nautical miles (NM). Graphic depictions attached.

Arrival Name DXEEE (RNAV)	Number ONE	STAR Computer Code DXEEE.DXEEE1	Superseded Number NONE	Dated	Effective Date				
TRANSITION ROUTES:									
Transition Name	Transition Computer Codes	From FIX/NAVAID	To FIX/NAVAID	Mag Course	Distance	MEA	MOCA	MAA	Crossing Altitudes / Fixes
HFMAN	HFMAN.DXEEE1	HFMAN	HFMAN						
			GYTON	024.79	18.87	12000	1800		
			DOBBY	023.83	52.85	12000	2600		
			THELM	014.50	29.09	12000	2700		AT/ABOVE FL200
			VIDAA	014.69	08.12	10000	2500		
			PUDDY	017.26	14.32	10000	2800		AT/ABOVE 14000
			ORINT	005.23	08.57	10000	2800		AT/ABOVE 12000
			DXEEE	005.57	07.42	8000	2600		BETWEEN 10000 AND 14000
HOOLR	HOOLR.DXEEE1	HOOLR	HOOLR						
			NILEE	338.54	10.00	12000	2000		
			SKEWT	356.63	20.40	12000	2600		AT/ABOVE FL200
			VIDAA	356.63	08.53	10000	2500		
			PUDDY	017.26	14.32	10000	2800		AT/ABOVE 14000
			ORINT	005.23	08.57	10000	2800		AT/ABOVE 12000
			DXEEE	005.57	07.42	8000	2600		BETWEEN 10000 AND 14000

ARRIVAL ROUTE DESCRIPTION:

FROM DXEEE ON TRACK 011.12/6.13 TO BAAAB, THEN ON TRACK 057.69/5.96 TO CROSS SMILN AT OR BELOW 12000.

LANDING RWY 17L/R: FROM SMILN ON TRACK 103.38/5.16 TO CROSS PLANX AT OR ABOVE 8000, THEN ON TRACK 103.43/6.63 TO DBORD, THEN ON TRACK 077.90/4.54 TO CROSS TRPPN AT 6000 AND AT 210 KIAS, THEN ON TRACK 354.68/4.00 TO SNOTT, THEN ON TRACK 354.68. EXPECT RNAV (RNP) APPROACH OR RADAR VECTORS TO FINAL APPROACH COURSE.

LANDING RWY 35L/R: FROM SMILN ON TRACK 093.91/6.09 TO FAACE, THEN ON TRACK 115.19/7.59 TO CROSS LIPSS AT 4000 AND AT 210 KIAS, THEN ON TRACK 115.26/3.63 TO STNSN, THEN ON TRACK 174.68/3.39 TO TATAU, THEN ON TRACK 174.68. EXPECT RNAV (RNP) APPROACH OR RADAR VECTORS TO FINAL APPROACH COURSE.

PROCEDURAL DATA NOTES:

NOTE: RADAR REQUIRED

NOTE: RNAV 1

NOTE: DME/DME/IRU OR GPS REQUIRED

NOTE: TURBOJET AND TURBOPROP AIRCRAFT ONLY

NOTE: EXPECT RUNWAY ASSIGNMENT FROM AUSTIN TRACON UPON INITIAL CONTACT.

FIXES AND/OR HOLDING PATTERNS:



FEDERAL AVIATION ADMINISTRATION
FLIGHT STANDARDS SERVICE
STANDARD TERMINAL ARRIVAL (STAR)

Bearings, headings, courses, tracks and radials are magnetic. Elevations and altitudes are in feet, MSL. Altitudes are minimum altitudes unless otherwise indicated.
Distances are in nautical miles (NM). Graphic depictions attached.

Arrival Name	Number	STAR Computer Code	Superseded Number	Dated	Effective Date
DXEEE (RNAV)	ONE	DXEEE.DXEEE1	NONE		

COMMUNICATIONS:

APP CON.
ATIS

AIRPORTS SERVED:

AUSTIN-BERGSTROM INTL, AUSTIN, TX

LOST COMMUNICATIONS PROCEDURE:

REMARKS:

ADDITIONAL FLIGHT DATA:

DME/DME ASSESSMENT: SAT (RNP 2.0)
REFERENCE MAGNETIC VARIATION = KAUS 04E/2020
DO NOT CHART MOCA'S

FLIGHT INSPECTED BY:

Name	Organization	Date	Signature
<u>DEVELOPED BY:</u>			
MIKE MCGHEE, SUPPORT MANAGER, OPERATIONS SUPPORT	ATO/CSB/ZHU	05/10/2017	<i>Digitally signed by</i> JOHNNIE BAKER Jun 08, 2017
Name	Organization	Date	Signature
<u>APPROVED BY:</u>			
MARLON J. ROBINSON, MANAGER	AJV-5440		<i>Digitally signed by</i> JOHNNIE BAKER Jun 08, 2017
Name	Organization	Date	Signature

CHANGES:

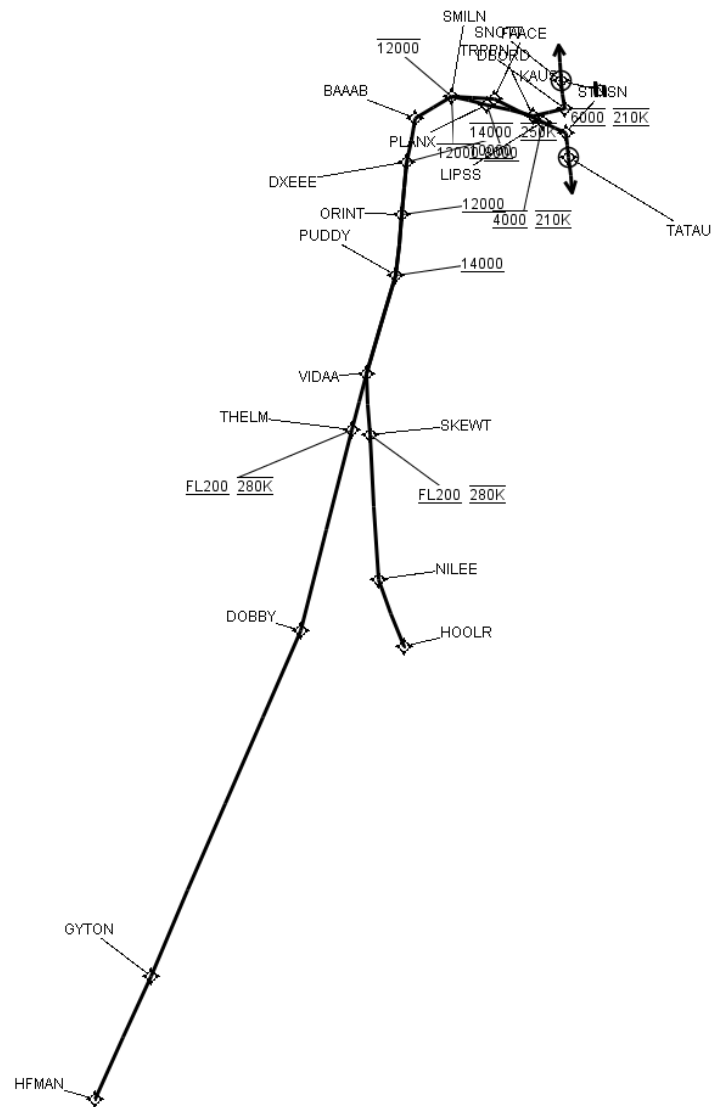
REASONS:



FEDERAL AVIATION ADMINISTRATION
FLIGHT STANDARDS SERVICE
STANDARD TERMINAL ARRIVAL (STAR)

Bearings, headings, courses, tracks and radials are magnetic. Elevations and altitudes are in feet, MSL. Altitudes are minimum altitudes unless otherwise indicated.
Distances are in nautical miles (NM). Graphic depictions attached.

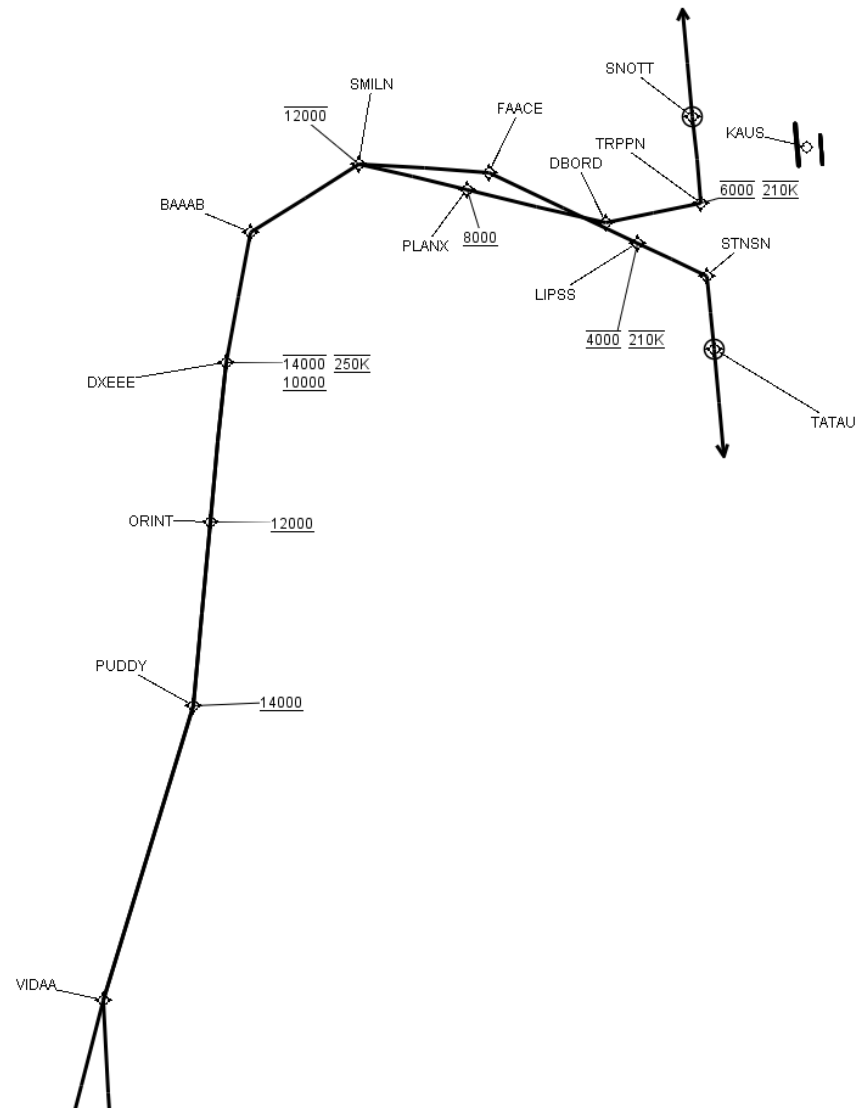
Arrival Name	Number	STAR Computer Code	Superseded Number	Dated	Effective Date
DXEEE (RNAV)	ONE	DXEEE.DXEEE1	NONE		
Graphic Depiction 1					



FEDERAL AVIATION ADMINISTRATION
FLIGHT STANDARDS SERVICE
STANDARD TERMINAL ARRIVAL (STAR)

Bearings, headings, courses, tracks and radials are magnetic. Elevations and altitudes are in feet, MSL. Altitudes are minimum altitudes unless otherwise indicated.
Distances are in nautical miles (NM). Graphic depictions attached.

Arrival Name	Number	STAR Computer Code	Superseded Number	Dated	Effective Date
DXEEE (RNAV)	ONE	DXEEE.DXEEE1	NONE		
Graphic Depiction 2					



FEDERAL AVIATION ADMINISTRATION
FLIGHT STANDARDS SERVICE
STAR (DATA RECORD)

Arrival Name DXEEE (RNAV)		Number ONE		STAR Computer Code DXEEE.DXEEE1		Superseded Number NONE		Dated	Effective Date
FIX/NAVAID	LAT/LONG	C	FO/FB	LEG TYPE	TC	DIST (NM)	ALTITUDE	SPEED	REMARKS
En Route Transition									
HFMAN	275537.76N / 0991308.41W	Y		IF					HFMAN.DXEEE1
GYTON	281212.44N / 0990251.26W	Y	FB	TF	028.79	18.87			
DOBBY	285901.13N / 0983443.20W	Y	FB	TF	027.83	52.85			
THELM	292640.38N / 0982408.78W	Y	FB	TF	018.50	29.09	AT/ABOVE FL200	AT 280K	
VIDAA	293422.87N / 0982109.78W	Y	FB	TF	018.69	08.12			
PUDDY	294745.60N / 0981511.63W	Y	FB	TF	021.26	14.32	AT/ABOVE 14000		
ORINT	295614.23N / 0981336.74W	Y	FB	TF	009.23	08.57	AT/ABOVE 12000		
DXEEE	300334.29N / 0981211.45W	Y	FB	TF	009.57	07.42	10000B14000	AT 250K	
En Route Transition									
HOOLR	285549.05N / 0981806.25W	Y		IF					HOOLR.DXEEE1
NILEE	290522.82N / 0982131.76W	Y	FB	TF	342.54	10.00			
SKEWT	292549.84N / 0982116.28W	Y	FB	TF	000.63	20.40	AT/ABOVE FL200	AT 280K	
VIDAA	293422.87N / 0982109.78W	Y	FB	TF	000.63	08.53			
PUDDY	294745.60N / 0981511.63W	Y	FB	TF	021.26	14.32	AT/ABOVE 14000		
ORINT	295614.23N / 0981336.74W	Y	FB	TF	009.23	08.57	AT/ABOVE 12000		
DXEEE	300334.29N / 0981211.45W	Y	FB	TF	009.57	07.42	10000B14000	AT 250K	
Common Route									
DXEEE	300334.29N / 0981211.45W	Y		IF			10000B14000	AT 250K	DXEEE.DXEEE1
BAAAB	300930.16N / 0981020.80W	Y	FB	TF	015.12	06.13			
SMILN	301220.06N / 0980417.43W	Y	FB	TF	061.69	05.96	AT/BELOW 12000		
Runway Transition									
SMILN	301220.06N / 0980417.43W	Y		IF			AT/BELOW 12000		
PLANX	301047.25N / 0975836.53W	Y	FB	TF	107.38	05.16	AT/ABOVE 8000		
DBORD	300847.56N / 0975118.53W	Y	FB	TF	107.43	06.63			
TRPPN	300925.93N / 0974607.39W	Y	FB	TF	081.90	04.54	AT 6000	AT 210K	



FEDERAL AVIATION ADMINISTRATION
FLIGHT STANDARDS SERVICE
STAR (DATA RECORD)

Arrival Name DXEEE (RNAV)	Number ONE	STAR Computer Code DXEEE.DXEEE1		Superseded Number NONE		Dated	Effective Date		
FIX/NAVAID	LAT/LONG	C	FO/FB	LEG TYPE	TC	DIST (NM)	ALTITUDE	SPEED	REMARKS
SNOTT	301326.44N / 0974613.77W	Y	FO	TF	358.68	04.00			
KAUS:RWY 17L,RWY 17R				FM	358.68				RECOMMENDED NAVAID: LLA VOR
Runway Transition									
SMILN	301220.06N / 0980417.43W	Y		IF			AT/BELOW 12000		
FAACE	301129.43N / 0975719.72W	Y	FB	TF	097.91	06.09			
LIPSS	300746.52N / 0974941.21W	Y	FB	TF	119.19	07.59	AT 4000	AT 210K	
STNSN	300559.65N / 0974601.91W	Y	FB	TF	119.26	03.63			
TATAU	300236.06N / 0974556.51W	Y	FO	TF	178.68	03.39			
KAUS:RWY 35L,RWY 35R				FM	178.68				RECOMMENDED NAVAID: LLA VOR

