

Flight Procedure Tracking Form		Action: FLIGHT CHECK	Task Type: IAP	Date Open: 06/30/2015	Task #: 2015063032814801006	Request #: 20150630328148
Procedure: RNAV (GPS) Y RWY 17R AMDT 2				Airport ID: KAUS	Airport: AUSTIN-BERGSTROM INTL	Reimbursable #: NO
City: AUSTIN	ST: TX	GPS #:	Estimated Chart Date: 08/17/2017		FICO #:	
Fac ID: N/A		Fac. Type:			Specialist: DUSTIN DAVIDSON	
Procedure Review						
	Rec'd	Rel'd	Full Name		Comments	
Lead:	12/27/2016					
QA:			J ZEDER 05/12/25017 16			
Liaison:						
Procedure Comments:			Remark Type: INFORMATION			
ASSIGNED MAG VAR: KAUS: OLD 6E - NEW 4E. CONTACT: ROBERT HAMILTON 405-954-4608.						

AUSTIN, TEXAS

AL-556 (FAA)

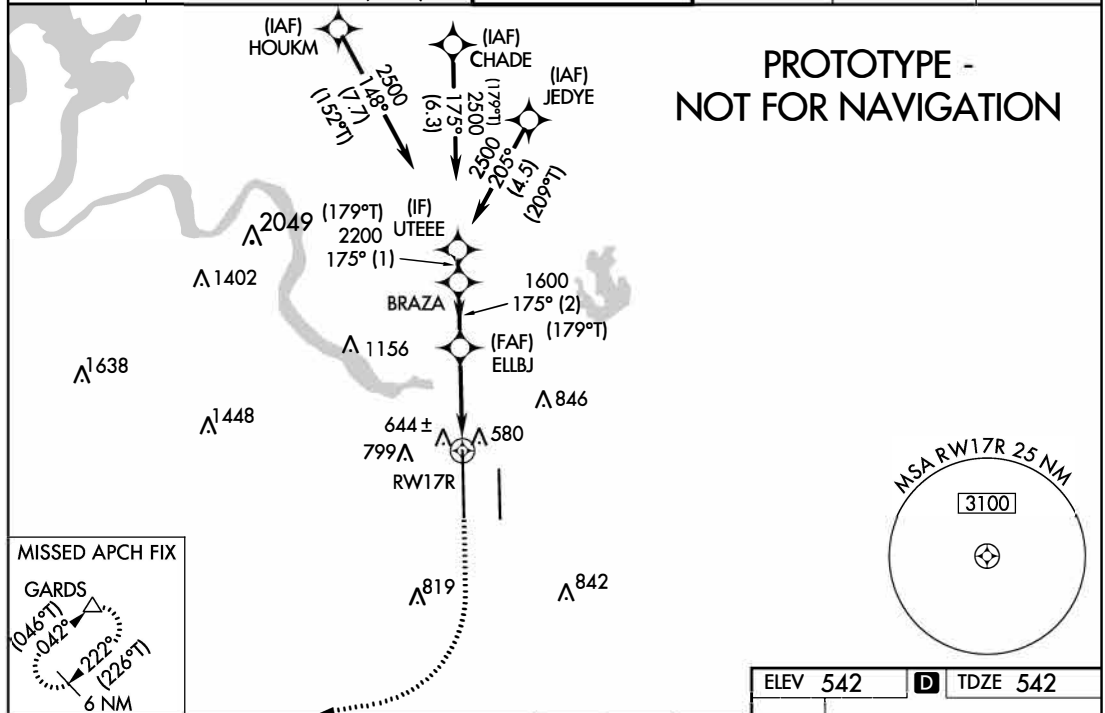
FIG

WAAS CH 77530 W17B	APP CRS 175°	Rwy Idg 12250 TDZE 542 Apt Elev 542
--	------------------------	--

RNAV (GPS) Y RWY 17R AUSTIN-BERGSTROM INTL (AUS)

<p>⚠ For uncompensated Baro-VNAV systems, LNAV/VNAV NA below -6°C (22°F) or above 54°C (130°F). Simultaneous approach authorized. LNAV procedure NA during simultaneous operations. Use of FD or AP providing RNAV track guidance required during simultaneous operations. DME/DME RNP-0.3 NA. For inop ALS, increase LNAV/VNAV all Cats visibility to RVR 4500. Increase LNAV visibility all Cats to RVR 5500.</p>	<p>MAIS</p> <p>MISSED APPROACH: Climb to 1000 then climbing right turn to 3500 direct GARDS and hold.</p>
--	---

D-ATIS 124.4	AUSTIN APP CON 127.225 317.65 (EAST) 120.875 270.25 (SOUTH) 119.0 370.85 (WEST)	AUSTIN TOWER 121.0 281.5	GND CON 121.9 348.6	CLNC DEL 125.5 263.0	CPDLC
------------------------	---	------------------------------------	-------------------------------	--------------------------------	-------



	UTEEE	BRAZA	ELLBJ	RW17R	
	2500	175° 2200	1600	1600	
	GP 3.00° TCH 59			*0.9 NM to RW17R	
	1 NM	2 NM	2.2 NM	0.9 NM	
CATEGORY	A	B	C	D	E
LPV DA		742/40	200 (200-¾)		
LNAV/VNAV DA		834/40	292 (300-¾)		
LNAV MDA		900/40	358 (400-¾)		
CIRCLING	1040-1 498 (500-1)	1100-1 558 (600-1)	1200-1¾ 658 (700-1¾)	1200-2 658 (700-2)	1520-3 978 (1000-3)

ELEV 542 **D** **TDZE 542**

175° to RW17R

17R

0.6% DOWN

12250 X 150

0.3% UP

TWR 727

121

9000 X 150

680

35L

35R

TDZ/CL Rwy 17L and 35R
HIRL Rwy 17L-35R and 17R-35L

AUTOMATED AL-556 RNAV (GPS) Y RWY 17R

SC-3

05-03-2017

COMPILER: LS

REVIEWER:

DBL CHKR:

EFF: FIG

AUSTIN, TEXAS

Amdt 2 FIG

30°12'N-97°40'W

AUSTIN-BERGSTROM INTL (AUS)

RNAV (GPS) Y RWY 17R

AUSTIN, TEXAS

AL-556 (FAA)

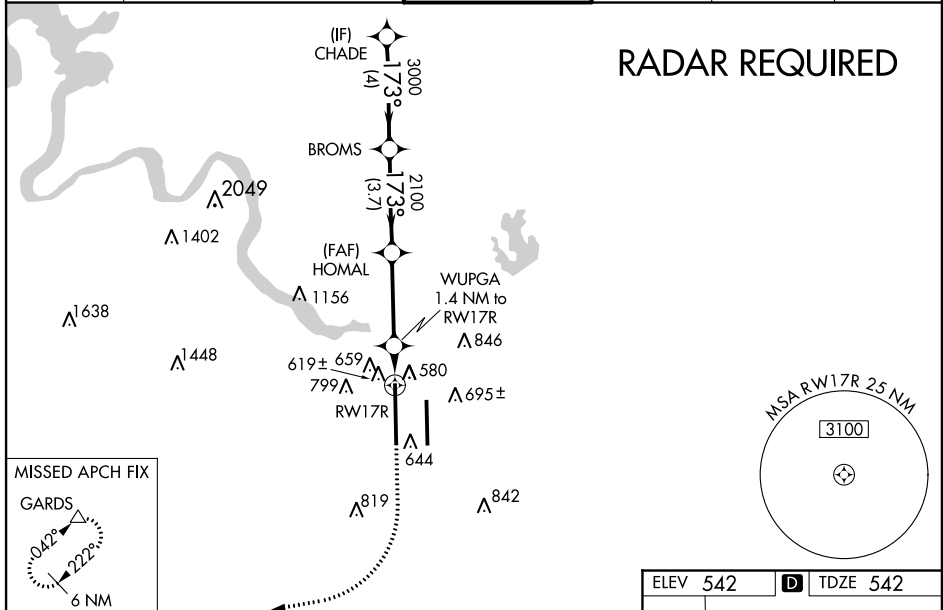
16091

WAAS CH 77530 W17B	APP CRS 173°	Rwy Idg 12250 TDZE 542 Apt Elev 542
--	------------------------	--

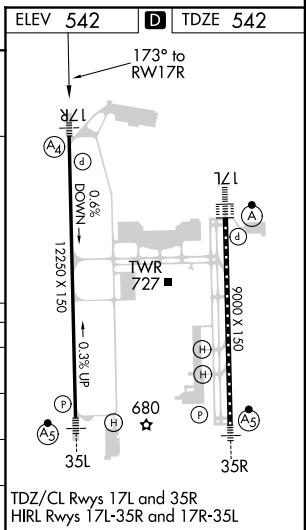
RNAV (GPS) Y RWY 17R AUSTIN-BERGSTROM INTL (AUS)

<p>⚠ For uncompensated Baro-VNAV systems, LNAV/VNAV NA below -8°C (18°F) or above 54°C (130°F). Simultaneous approach authorized with Rwy 17L. LNAV procedure NA during simultaneous operations. DME/DME RNP-0.3 NA. Use of FD or AP providing RNAV track guidance required during simultaneous operations. For inop MALS, increase LNAV/VNAV all Cats visibility to RVR 4500. Increase LNAV Cats D and E visibility to RVR 5000.</p>	<p>MALS (A₄) =</p>	<p>MISSED APPROACH: Climb to 1000 then climbing right turn to 3500 direct GARDS and hold.</p>
--	--	---

ATIS 124.4	AUSTIN APP CON 127.225 317.65 (EAST) 120.875 270.25 (SOUTH) 119.0 370.85 (WEST)	AUSTIN TOWER 121.0 281.5	GND CON 121.9 348.6	CLNC DEL 125.5 263.0	CPDLC
----------------------	---	------------------------------------	-------------------------------	--------------------------------	-------



	CHADE	BROMS	HOMAL	WUPGA 1.4 NM to RWY 17R	*LNAV only.
	4000	3000	2100	2100	*1040
	GP 3.00° TCH 59				
	4 NM	3.7 NM	3.3 NM	0.5	0.9
CATEGORY	A	B	C	D	E
LPV DA		742/40	200 (200-¾)		
LNAV/VNAV DA		833/40	291 (300-¾)		
LNAV MDA		880/40	338 (400-¾)		
CIRCLING	1040-1 498 (500-1)	1100-1 558 (600-1)	1200-1¾ 658 (700-1¾)	1200-2 658 (700-2)	1520-3 978 (1000-3)



AUSTIN, TEXAS

Amtd 1B 20AUG15

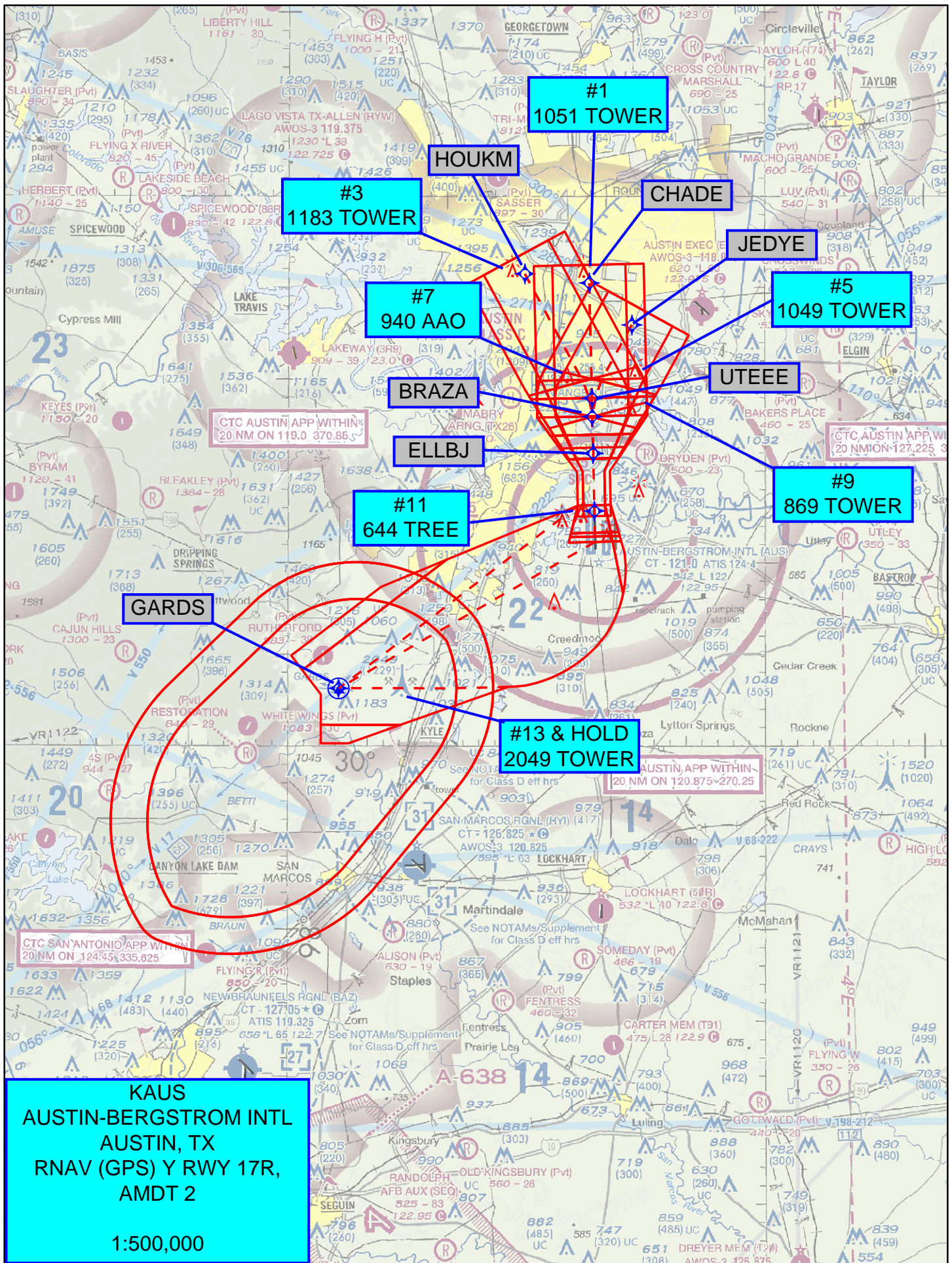
30°12'N-97°40'W

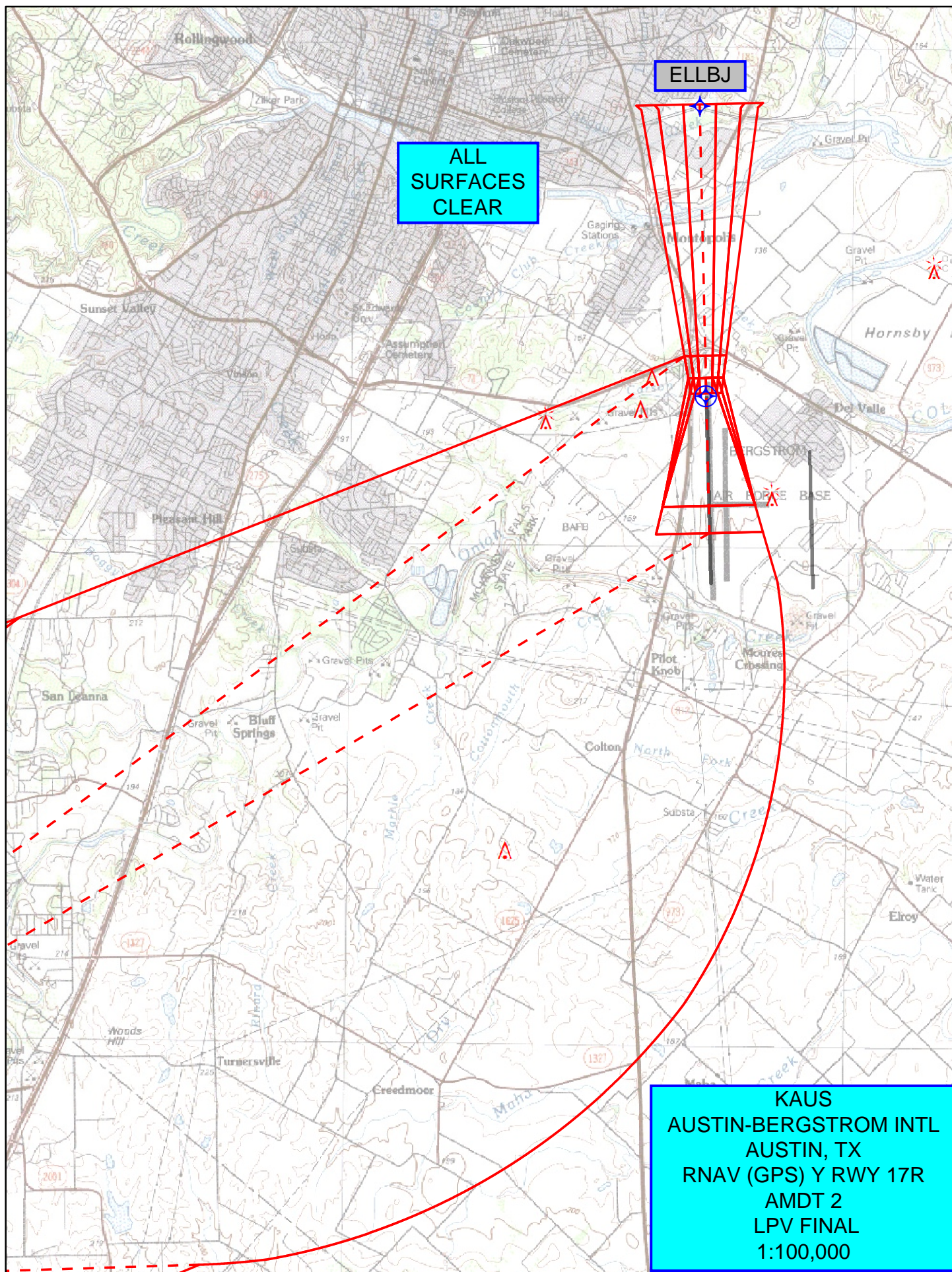
AUSTIN-BERGSTROM INTL (AUS)

RNAV (GPS) Y RWY 17R

SC-3, 02 MAR 2017 to 30 MAR 2017

SC-3, 02 MAR 2017 to 30 MAR 2017





KAUS
AUSTIN-BERGSTROM INTL
AUSTIN, TX
RNAV (GPS) Y RWY 17R,
AMDT 2
LNAV/VNAV FINAL
1:100,000

