

| | | | | | |
|-------------------------------------------------------------------------------------------------------------------------------------------------------------------------------------------------------------------------------------------------------------------------------------------------------------------------------------------------------------------------|------------------------------|-----------------------------------------------|-------------------------------------|---------------------------------------------------|------------------------------------------------------|
| Flight Procedures Cover Page | Task Action: FLIGHT CHECK | Task Type: IAP | Estimated Chart Date: 09/08/2022 | APWS Task ID: D725204C709C4E4B978FA350AB01B325 | APWS Project ID: C0FDEB1A2B5C4DA589448C8C0A617DAC |
| Procedure: RNAV (GPS) RWY 14 ORIG | | Enroute: NO | Specialist: Campbell, Colin | | Agreement Number: |
| Airport ID: KLWM | | | Airport City: LAWRENCE | | State: MA |
| Facility ID: | Facility Type: | Flight Inspection Remark Type: New FC Slot | | | |
| <div>Procedure Comments:</div> <div>NEW LP AND LNAV APPROACH.</div> <div>ACTIVE AIRPORT DATA USED FOR PROCEDURE.</div> <div>CONTACT: JASON KRETSCHMER, AJV-A421, (405) 954-4019</div> <div><div>Digitally signed by</div><div>JASON KRETSCHMER</div><div>May 10, 2022</div></div> <div><div>QUALITY 10 CHECKED</div><div>QUALITY 38 CHECKED</div></div> | | | | | |

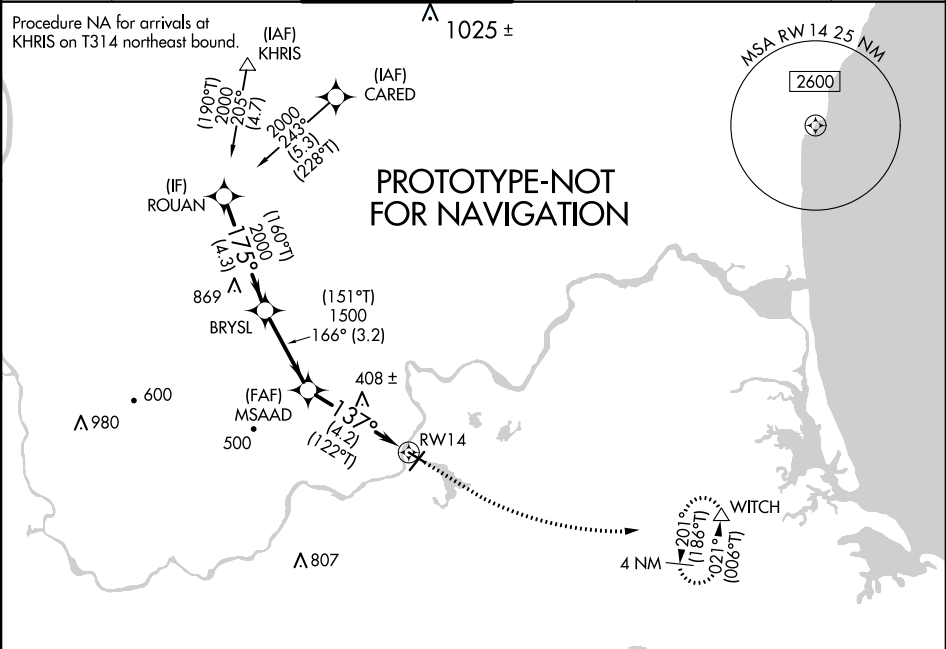
| | | | |
|----------------------------------------|------------------------|-----------------------------|-----------------------------------------|
| WAAS CH 99642 W14A | APP CRS 137° | Rwy Idg TDZE Apt Elev | 3654 146 148 |
|----------------------------------------|------------------------|-----------------------------|-----------------------------------------|

RNAV (GPS) RWY 14

LAWRENCE MUNI (LWM)

| | | | |
|-----------------------------------|--|--------------------------------------------------------------------|--|
| RNP APCH - GPS. | | MISSED APPROACH: Climbing left turn to 2000 direct WITCH and hold. | |
| ⚠ Circling to Rwy 32 NA at night. | | | |

| | | | | | |
|-----------------------|--------------------------------------|--------------------------------------------|-------------------------|---------------------------------------------------------|------------------------|
| ATIS 126.75 | BOSTON APP CON 124.4 279.6 | LAWRENCE TOWER ★ 119.25 (CTAF) 0 | GND CON 124.3 | CLNC DEL 124.3 *126.15 * when tower closed | UNICOM 122.8 |
|-----------------------|--------------------------------------|--------------------------------------------|-------------------------|---------------------------------------------------------|------------------------|



| | | | | | |
|----------|--|----------|-------------|----------------------|-------------------------|
| | | ELEV 148 | | TDZE 146 | |
| | | | | | |
| | | | | | |
| | | | | | |
| | | | | | |
| CATEGORY | | A | B | C | D |
| LP MDA | | 580-1 | 434 (500-1) | 580-1¼ | 434 (500-1¼) |
| LNAV MDA | | 660-1 | 514 (600-1) | 660-1⅓ | 514 (600-1⅓) |
| CIRCLING | | 740-1 | 592 (600-1) | 840-2 692 (700-2) | 1220-3 1072 (1100-3) |

ROUAN

BRYSL

MSAAD

2000

2000

1500

137°

137°

1.3 NM to RWY14

3.00° TCH 45

1.3 NM

2000

WITCH

137° to RW14

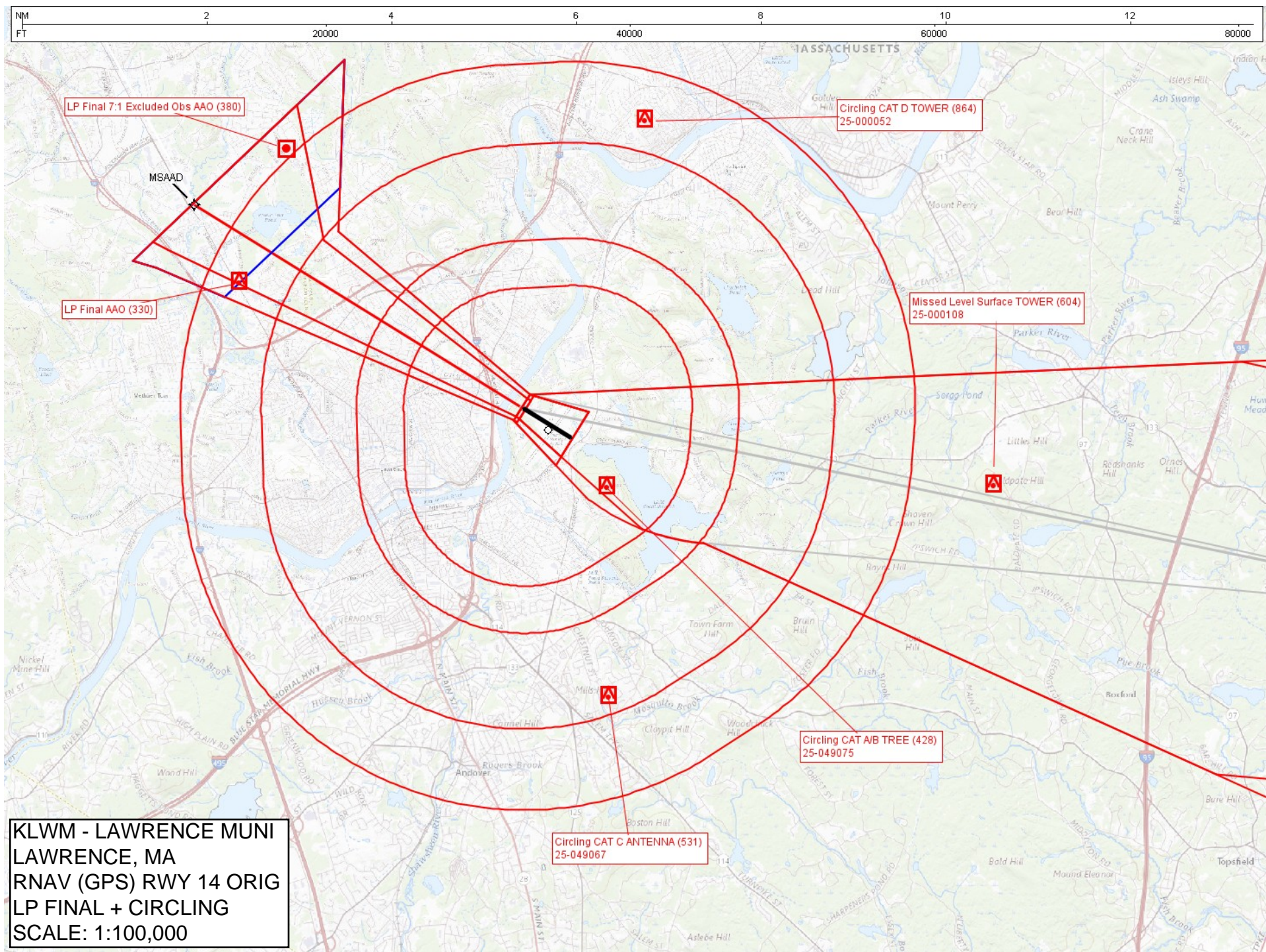
0.78 UP

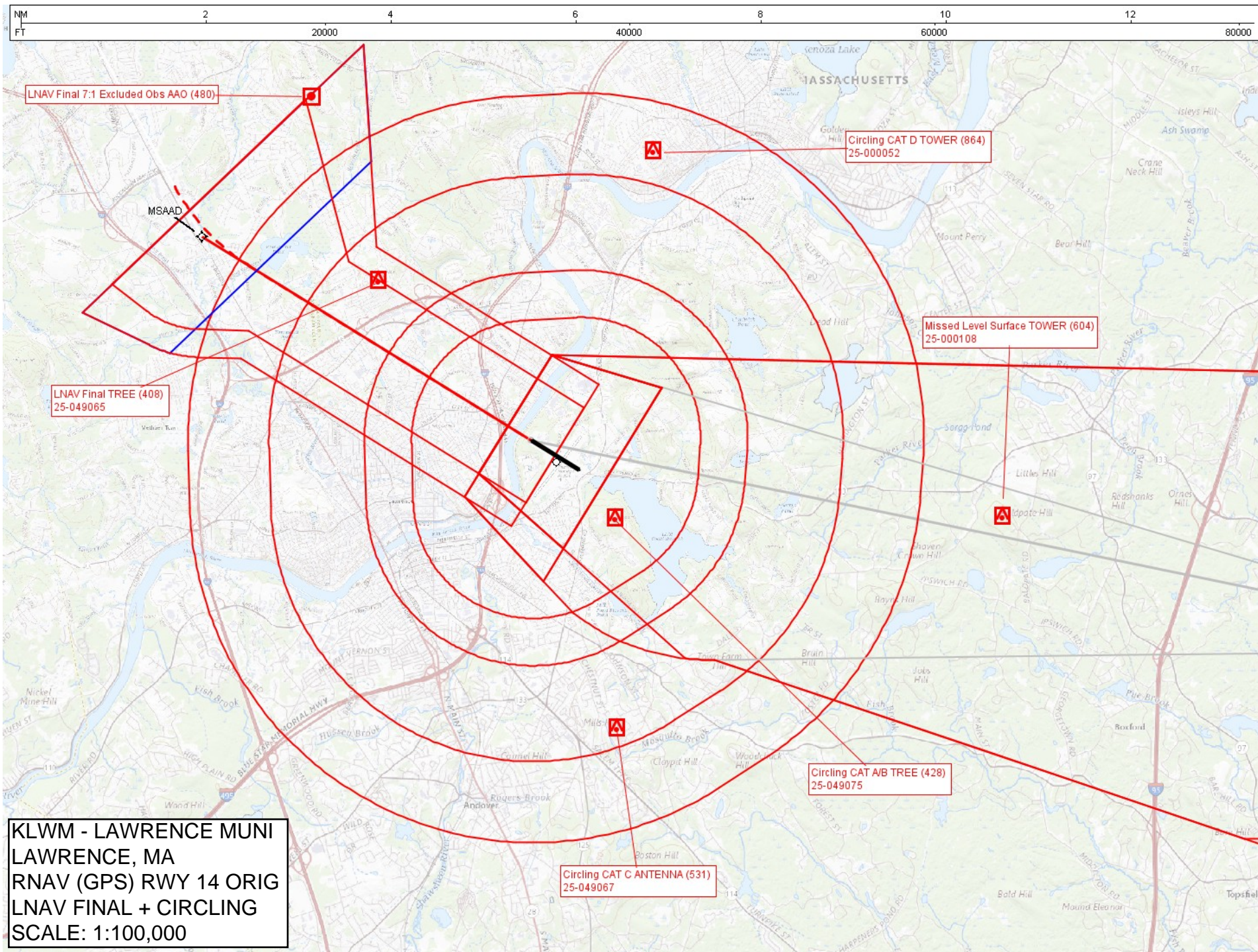
3654 X 100

5001 X 100

TWR 233







Federal Aviation Administration Categorical Exclusion Declaration

Date: 11/01/2017

IFP: Reddinger, Shawn (Shawn.Reddinger@faa.gov)

Airport Contact: N/A

Request ID: KLWM_170908_16

Single or Multiple Procedure:

Multiple

Procedure Name(s):

*new approach - selected amendment to force submission to ESC enviro screen
RNAV (GPS) RWY 14

Procedure Request Description:

*see attached KML file - Approach will start at or above 2000' MSL at published fix KHRIS or "IAF" (42 55 28.57N/071 11 56.83W) to "IF" (42 52 42.43N/071 16 52.18W), then turn south south east to 42 48 18.04N/071 14 43.14W at or above 1800 MSL, then turning more easterly to "FAF" (42 45 28.42N/071 12 38.61W) at or above 1500 MSL.
Missed approach will climb direct to published fix WITCH and hold as published at 2000 MSL.

Declaration of Exclusion:

The FAA has reviewed the above referenced proposed action and it has been determined, by the undersigned, to be categorically excluded from further environmental documentation according to FAA Order 1050.1, "Environmental Impacts: Policies and Procedures." The implementation of this action will not result in any extraordinary circumstances in accordance with FAA Order 1050.1.

Basis for this Determination:

This review was conducted in accordance with policies and procedures in Department of Transportation Order 5610.1, "Procedures for Considering Environmental Impacts" and FAA Order 1050.1.

The applicable Categorical Exclusion is:

5-6.5.i: Establishment of new or revised air traffic control procedures conducted at 3,000 feet or more above ground level (AGL); procedures conducted below 3,000 feet AGL that do not cause traffic to be routinely routed over noise sensitive areas; modifications to currently approved procedures conducted below 3,000 feet AGL that do not significantly increase noise over noise sensitive areas; and increases in minimum altitudes and landing minima. For modifications to air traffic procedures at or above 3,000 feet AGL, the Noise Screening Tool (NST) or other FAA-approved environmental screening methodology should be applied. (ATO, AVS)

The above flight procedure has been developed within the accepted parameters.

Concurrence/Reviewed By: Lisa Favors Date: 11/1/17

Title: Environmental Protection Specialist

Approved By: _____ Date: November 15, 2017

Title: North and Environmental Team Manager