

Flight Procedure Tracking Form		Action: AMENDMENT	Task Type: IAP	Date Open: 06/23/2015	Task #: 2015062332191201006	Request #: 20150623321912
Procedure: APPROACH CONVERGING ILS V RWY 30 R AMDT 3A			Airport ID: KMSP	Airport: MINNEAPOLIS-ST PAUL INTL/WOLD-CHAMBERLAIN		Reimbursable #: NO
City: MINNEAPOLIS	ST: MN	GPS #:	Estimated Chart Date: 03/31/2016			FICO #:
Fac ID: N/A		Fac. Type:			Specialist: ERIC N SUSKI	
Procedure Review						
	Rec'd	Rel'd	Full Name	Comments		
Lead:	07/06/2015					
QA:		1/22/16	D. Kyli			
Liaison:						
Procedure Comments:				Remark Type: INFORMATION		
PNOTAM TO UPDATE SIMULTANEOUS APPROACH NOTES REMARKS: REQUEST TABLE TOP ONLY FC EVAL CONTACT JACOB POWERS/SUB-TEAM MANAGER, IFP TEAM 2, 405.954.8702						

[Print](#)

Project Name: MSP SIMUL APPCH NOTES UPDATE

Project Reason: PER ATC, LEAD, FPT. UPDATE NOTE SIMULTANEOUS APPROACH NOTES TO .19G CRITERIA.

Last Updated By: Eric Suski

Last Updated At: 2016-01-22 20:49:05.510867

Status: Verified

6/5964

!FDC X/XXXX MSP IAP MINNEAPOLIS-ST PAUL INTL/WOLD-CHAMBERLAIN, MINNEAPOLIS, MN. ILS V RWY 30R (CONVERGING), AMDT 3A... DELETE NOTE: SIMULTANEOUS APPROACH AUTHORIZED WITH ILS V RWY 35 (CONVERGING). CHART NOTE: SIMULTANEOUS APPROACHES AUTHORIZED WITH RWY 30R AND ILS V RWY 35 (CONVERGING). THIS IS ILS V RWY 30R (CONVERGING), AMDT 3B. 1601222049-PERM

1/22/16

QUALITY
7
CHECKED

MINNEAPOLIS, MINNESOTA

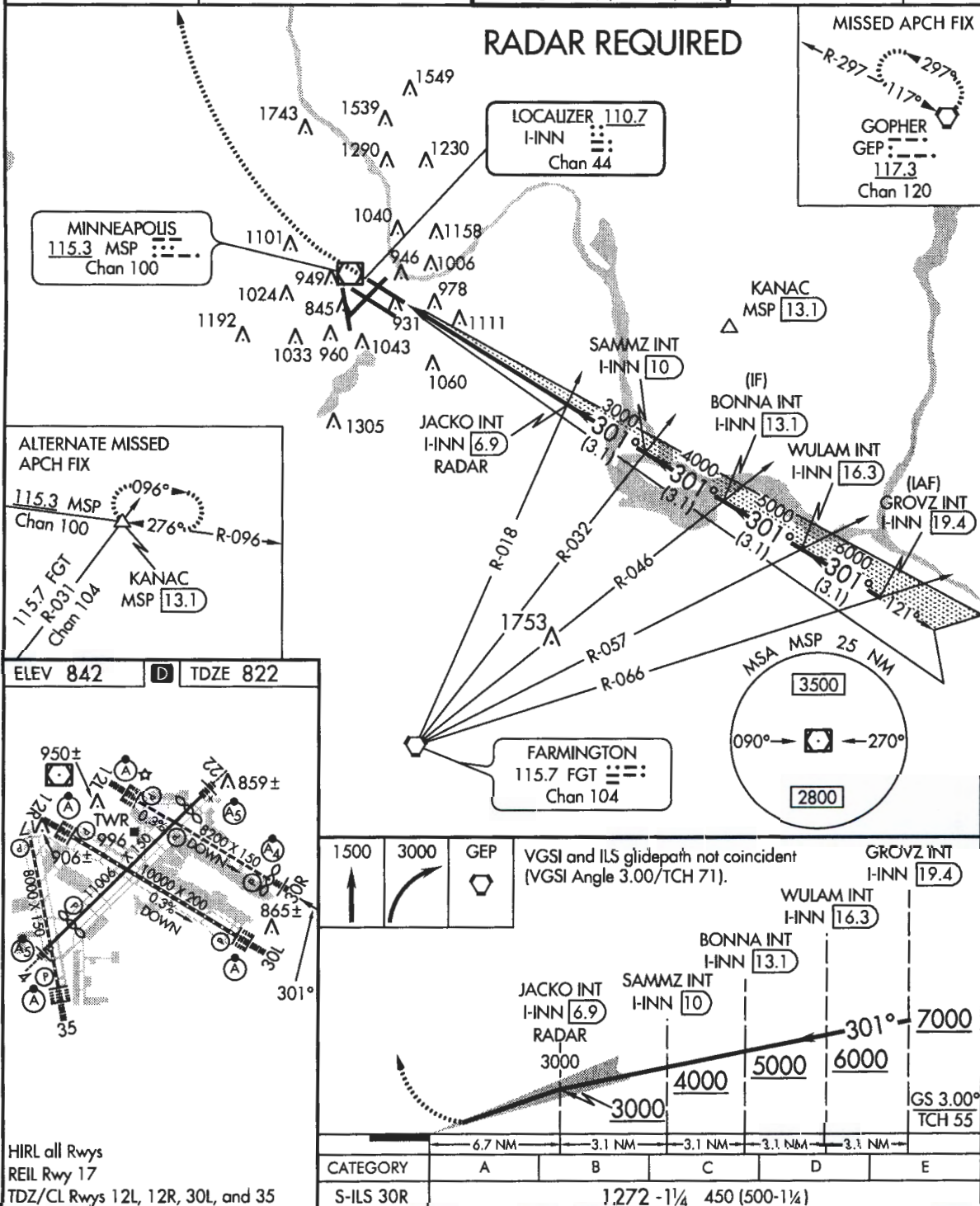
AL-264 (FAA)

15288

LOC/DME I-INN	APP CRS	Rwy Idg	8000
110.7	301°	TDZE	822
Chan 44		Apt Elev	842

ILS V RWY 30R (CONVERGING) **MINNEAPOLIS-ST PAUL INTL/WOLD-CHAMBERLAIN (MSP)**

ATIS ARR 135.35 239.275 DEP 120.8	MINNEAPOLIS APP CON 118.725 335.5 (Rwy 35) 119.3 335.5 (12L-30R, 4-22, 17) 126.95 335.5 (12R-30L)	MINNEAPOLIS TOWER 123.675 273.55 (17-35) 123.95 273.55 (12L-30R) 126.7 273.55 (12R-30L, 4-22)	GND CON N 121.8 348.6 S 121.9 348.6 W 127.925 348.6	CLNC DEL 133.2
--	--	--	--	---------------------------------



NC-1, 07 JAN 2016 to 04 FEB 2016

NC-1, 07 JAN 2016 to 04 FEB 2016

MINNEAPOLIS, MINNESOTA
Amdt 3A 30APR15MINNEAPOLIS-ST PAUL INTL/WOLD-CHAMBERLAIN (MSP)
44°53'N-93°13'W
ILS V RWY 30R (CONVERGING)