

Flight Procedure Tracking Form		Action: CANCELLATION	Task Type: IAP	Date Open: 11/20/2015	Task #: 2015061724363901003	Request #: 20150617243639
Procedure: NDB RWY 18 AMDT 1A			Airport ID: K5R4	Airport: FOLEY MUNI		Reimbursable #: NO
City: FOLEY	ST: AL	GPS #:	Estimated Chart Date: 07/21/2016		FICO #:	
Fac ID: ESU		Fac. Type: NDB			Specialist: KELLY DEAN	
Procedure Review						
	Rec'd	Rel'd	Full Name	Comments		
Lead:	09/03/2015					
QA:			J ZEDER 03/14/2016 16			
Liaison:						
Procedure Comments:			ENROUTE-NON	Remark Type: INFORMATION		
POC FOR THIS ACTION IS JULIE MORGAN - 405-954-8830						

CANCEL

FOLEY, ALABAMA

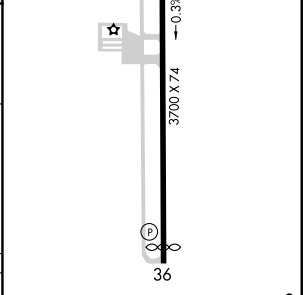
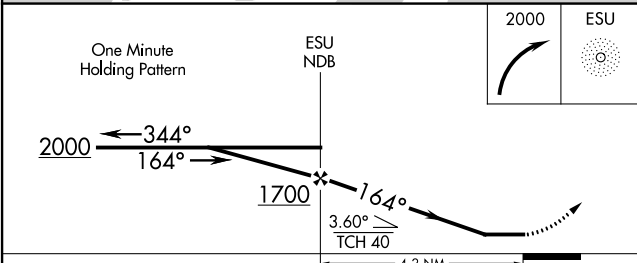
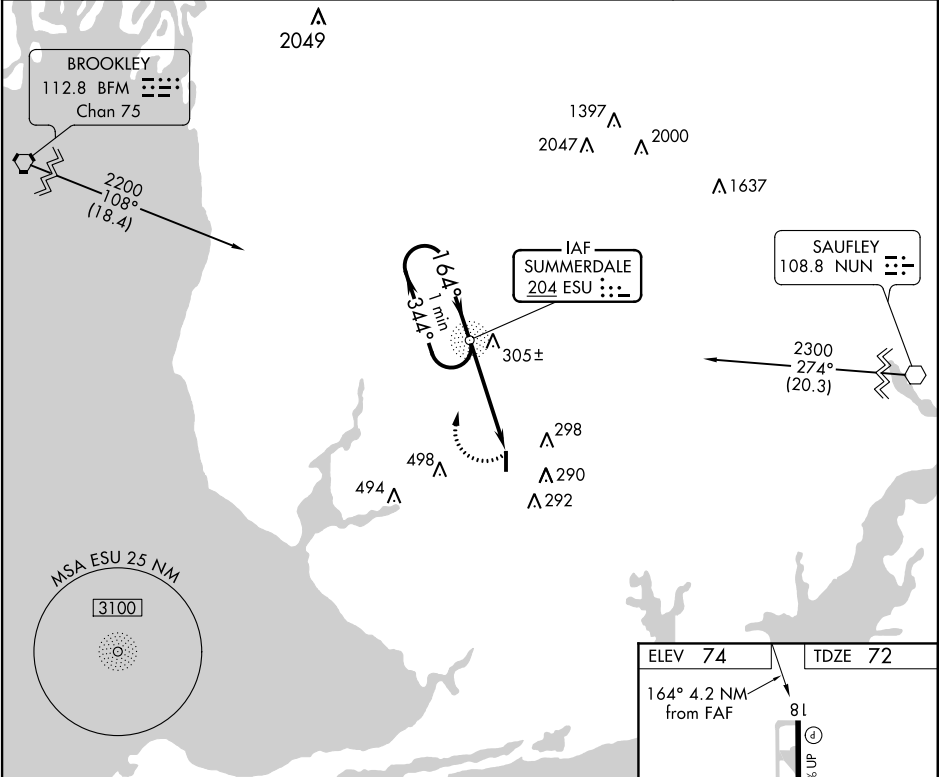
15344

NDB ESU 204	APP CRS 164°	Rwy ldg TDZE Apt Elev	3700 72 74
-----------------------	------------------------	-----------------------------	---------------------------------------


NDB RWY 18
FOLEY MUNI (5R4)

⚠ NA Visibility reduction by helicopters NA. Use Fairhope altimeter setting. When not received, use Gulf Shores altimeter setting and increase all MDA 20 feet and visibility Cat C ¼ mile.	MISSED APPROACH: Climbing right turn to 2000 direct ESU NDB and hold.
--	---

FAIRHOPE AWOS-3 118.425	PENSACOLA APP CON 118.6 380.6	UNICOM 123.05 (CTAF) 0
-----------------------------------	---	----------------------------------



CATEGORY	A	B	C	D
S-18	800-1 728 (800-1)	800-2 728 (800-2)	800-2 726 (800-2)	NA
CIRCLING	800-1 726 (800-1)	800-2 726 (800-2)	800-2 726 (800-2)	NA

MIRL Rwy 18-36 					
FAF to MAP 4.2 NM					
Knots	60	90	120	150	180
Min:Sec	4:12	2:48	2:06	1:41	1:24

FOLEY, ALABAMA

Amdt 1A 12JAN12

30°26'N-87°42'W

FOLEY MUNI (5R4)
NDB RWY 18

SE-4, 07 JAN 2016 to 04 FEB 2016

SE-4, 07 JAN 2016 to 04 FEB 2016