

Flight Procedure Tracking Form		Action: FLIGHT CHECK	Task Type: IAP	Date Open: 06/17/2015	Task #: 2015061724363901001	Request #: 20150617243639
Procedure: RNAV (GPS) RWY 36 AMDT 2			Airport ID: K5R4	Airport: FOLEY MUNI		Reimbursable #: NO
City: FOLEY	ST: AL	GPS #:	Estimated Chart Date: 07/21/2016		FICO #:	
Fac ID: N/A		Fac. Type:			Specialist: KELLY DEAN	
Procedure Review						
	Rec'd	Rel'd	Full Name	Comments		
Lead:	09/03/2015					
QA:			J ZEDER 03/14/2016 16			
Liaison:						
Procedure Comments:			ENROUTE-NON			
			Remark Type: INFORMATION			
POC FOR THIS ACTION IS JULIE MORGAN, 405-954-8830						


FOLEY, ALABAMA

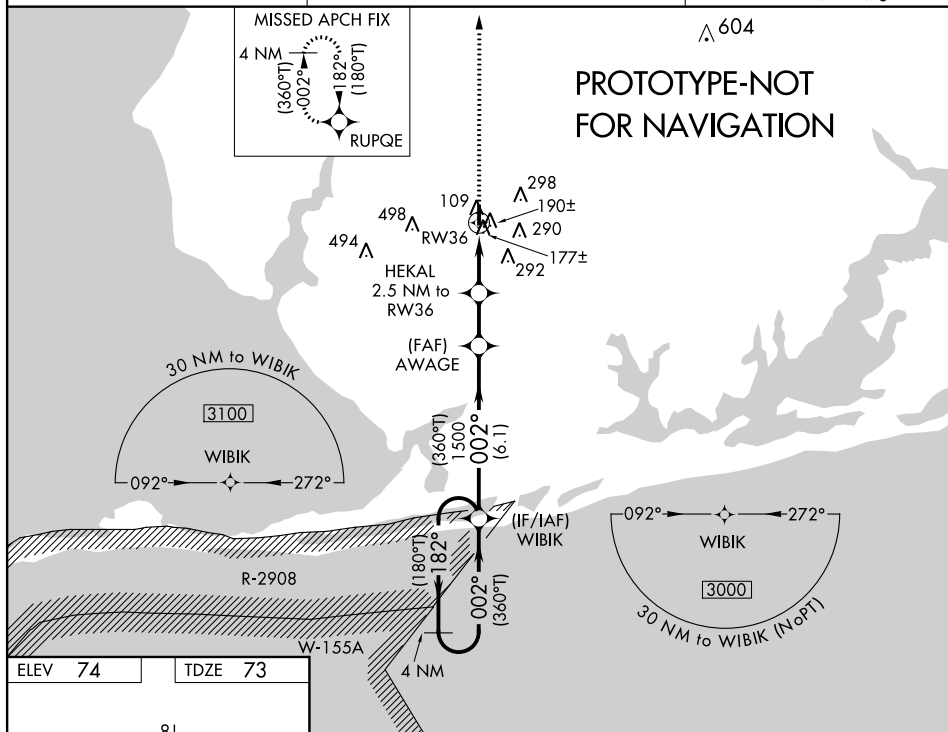
AL-6899 (FAA)

FIG

WAAS CH 93515 W36A	APP CRS 002°	Rwy Idg TDZE Apt Elev	3513 73 74
--	------------------------	-----------------------------	---------------------------------------

RNAV (GPS) RWY 36

<div><div><div></div><div></div></div><div>NA</div></div>	Baro-VNAV NA. DME/DME RNP-0.3 NA. Procedure NA at night. Helicopter visibility reduction below 1 SM NA. Use Fairhope altimeter setting. When not received, use Gulf Shores altimeter setting and increase all MDA 20 feet; increase LNAV Cat C visibility 1/8 mile and Circling Cat C visibility 1/4 mile.		MISSED APPROACH: Climb to 3100 direct RUPQE and hold, continue climb-in-hold to 3100.
	FAIRHOPE AWOS-3 118.425	PENSACOLA APP CON 118.6 380.6	UNICOM 123.05 (CTAF) 



CATEGORY	A	B	C	D
LP MDA	460-1	387 (400-1)	460-1 $\frac{1}{8}$ 387 (400-1 $\frac{1}{8}$)	NA
LNAV MDA	480-1	407 (500-1)	480-1 $\frac{1}{8}$ 407 (500-1 $\frac{1}{8}$)	NA
C CIRCLING	680-1	606 (700-1)	880-2 $\frac{1}{4}$ 806 (900-2 $\frac{1}{4}$)	NA

FOIFY ALABAMA

Amdt 2 FIG

30°26'N-87°42'W

FOLEY MUNI (5R4)

RNAV (GPS) RWY 36

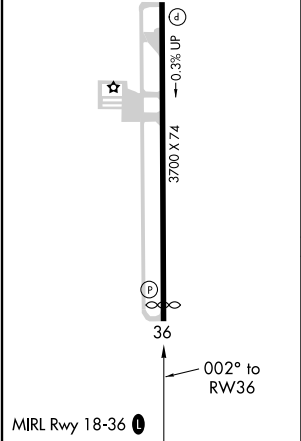
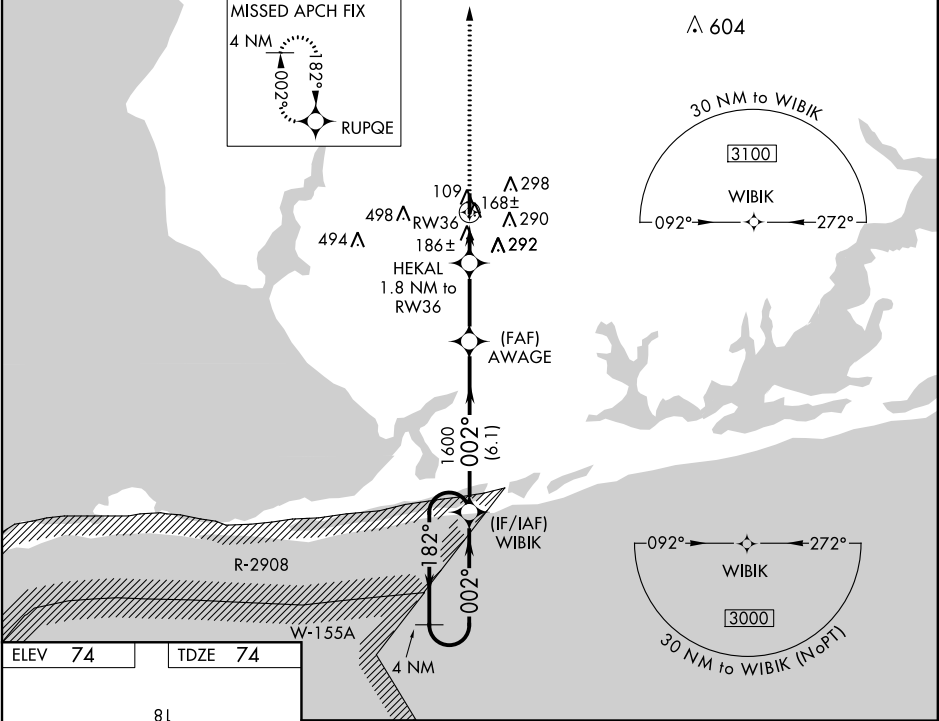
WAAS CH 93515 W36A	APP CRS 002°	Rwy Idg 3512 TDZE 74 Apt Elev 74
--	------------------------	---

RNAV (GPS) RWY 36
FOLEY MUNI (5R4)

Baro-VNAV NA. DME/DME RNP-0.3 NA. Visibility reductions by helicopters NA. Use Fairhope altimeter setting. When not received, use Gulf Shores altimeter setting and increase all DA 4 feet and all MDA 20 feet.

MISSED APPROACH: Climb to 3100 direct RUPQE and hold, continue climb-in-hold to 3100.

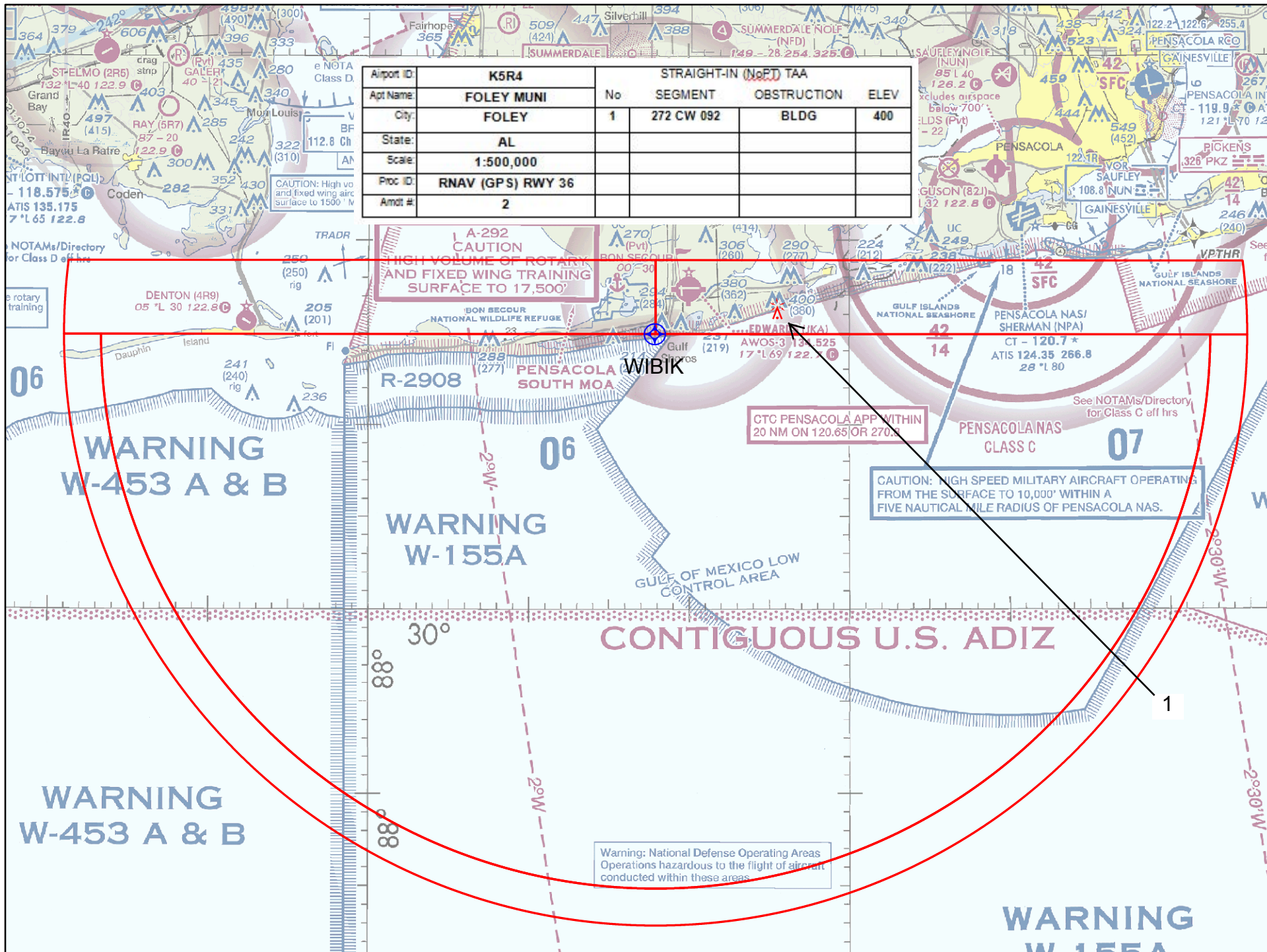
FAIRHOPE AWOS-3 118.425	PENSACOLA APP CON 118.6 380.6	UNICOM 123.05 (CTAF) 0
-----------------------------------	---	----------------------------------

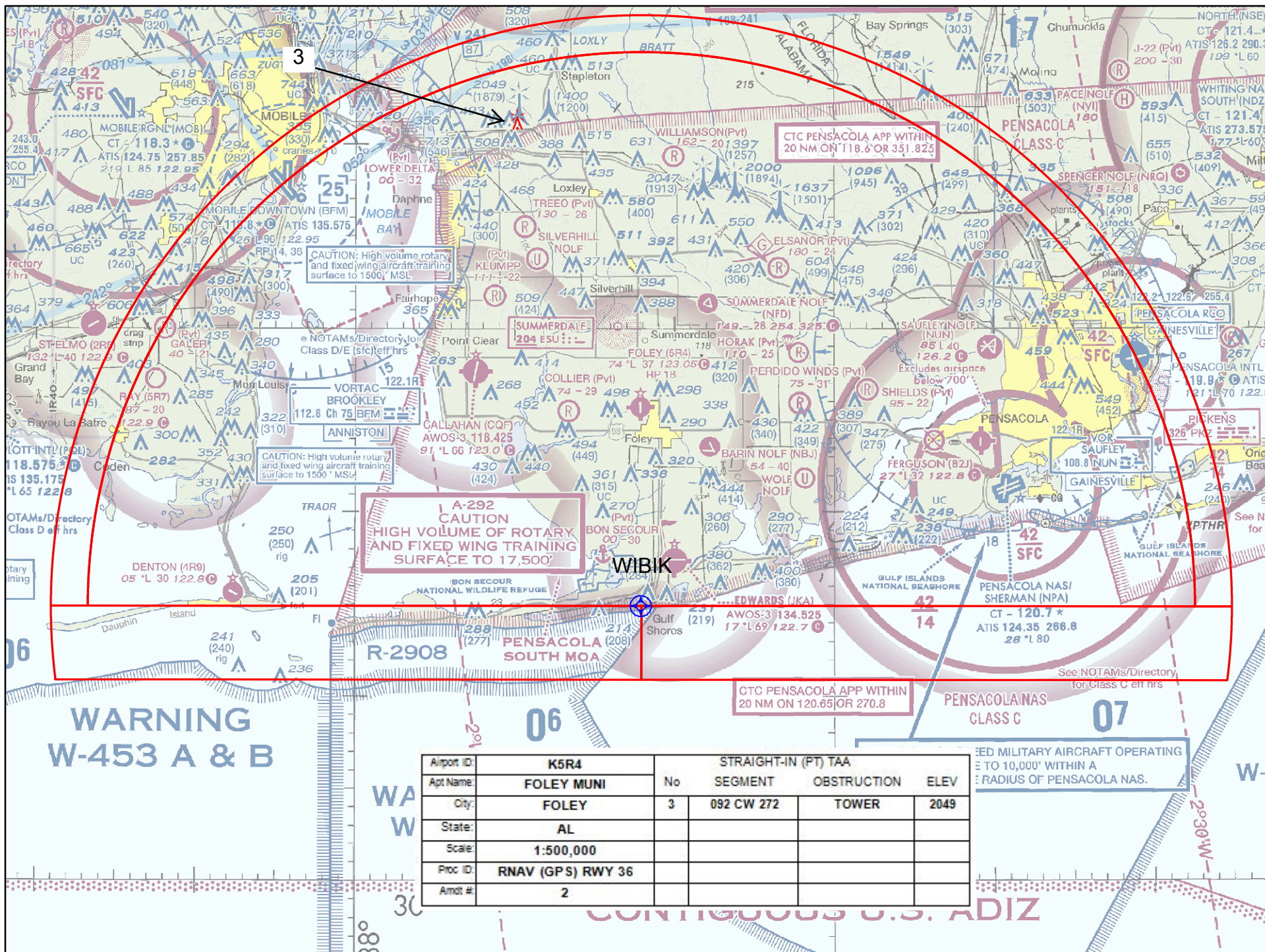


3100	RUPQE	VGSi and RNAV glidepath not coincident (VGSi Angle 3.00/TCH 40).		WIBIK	4 NM Holding Pattern
*LNAV only.	HEKAL 1.8NM to RW36	AWAGE	WIBIK	182° → 3000	← 002°
	*680	1600		GP 3.00° TCH 45	
	1.8 NM	2.8 NM	6.1 NM		
CATEGORY	A	B	C	D	
LPV DA	456-1¼ 382 (400-1¼)			NA	
LNAV/VNAV DA	622-2 548 (600-1)			NA	
LNAV MDA	640-1	566 (600-1)	640-1½ 566 (600-1½)	NA	
CIRCLING	680-1	606 (700-1)	720-1¾ 646 (700-1¾)	NA	

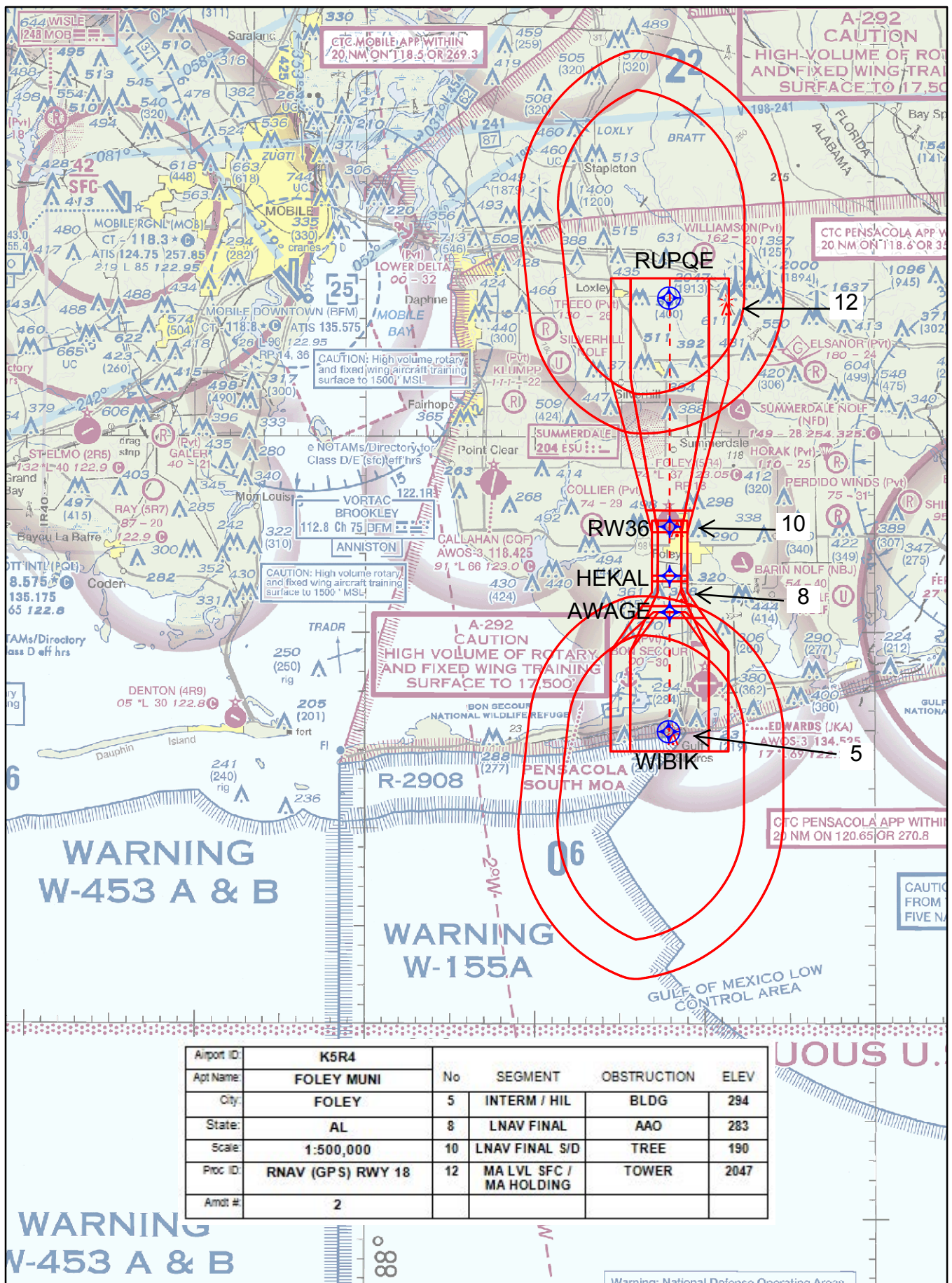
SE-4, 07 JAN 2016 to 04 FEB 2016

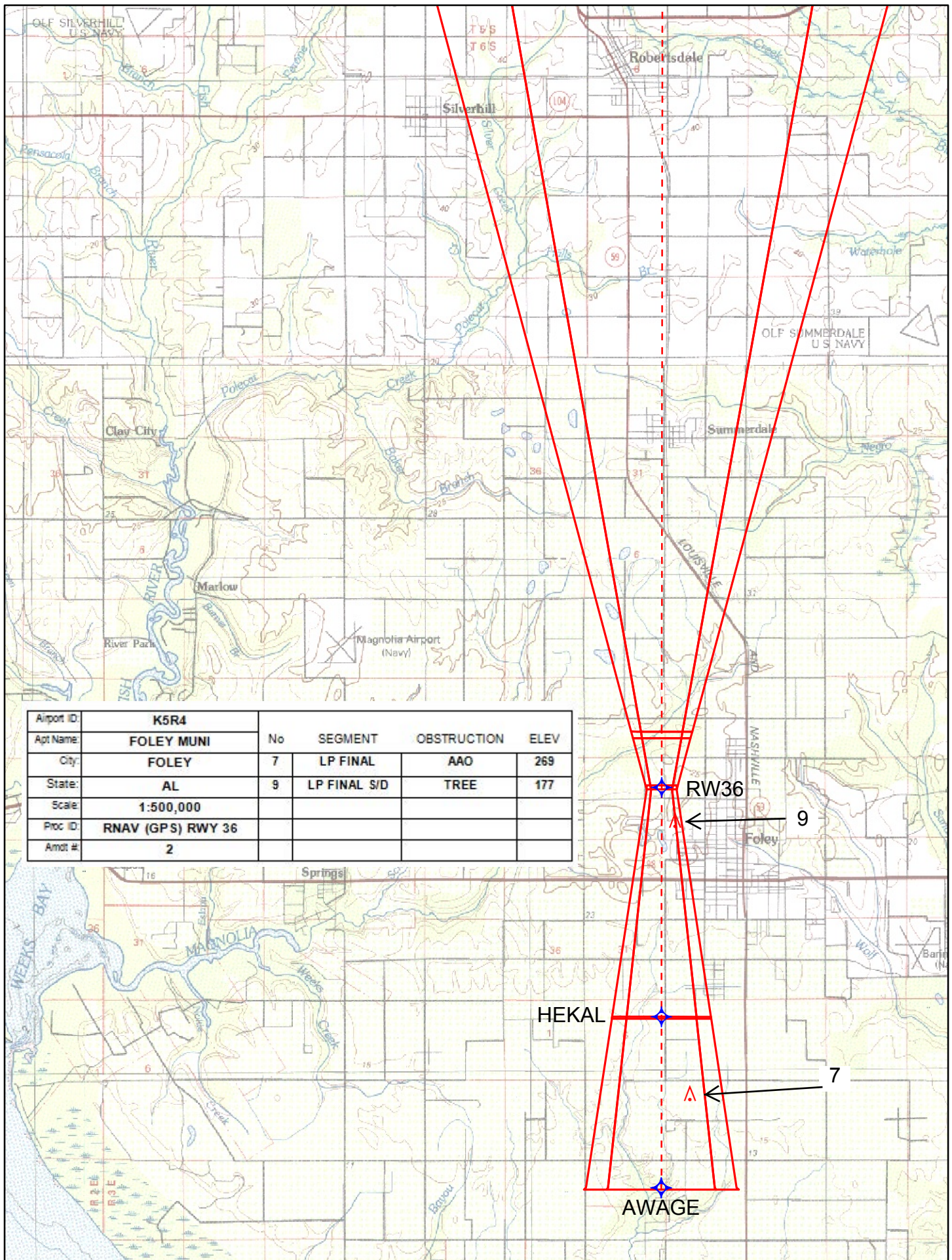
SE-4, 07 JAN 2016 to 04 FEB 2016





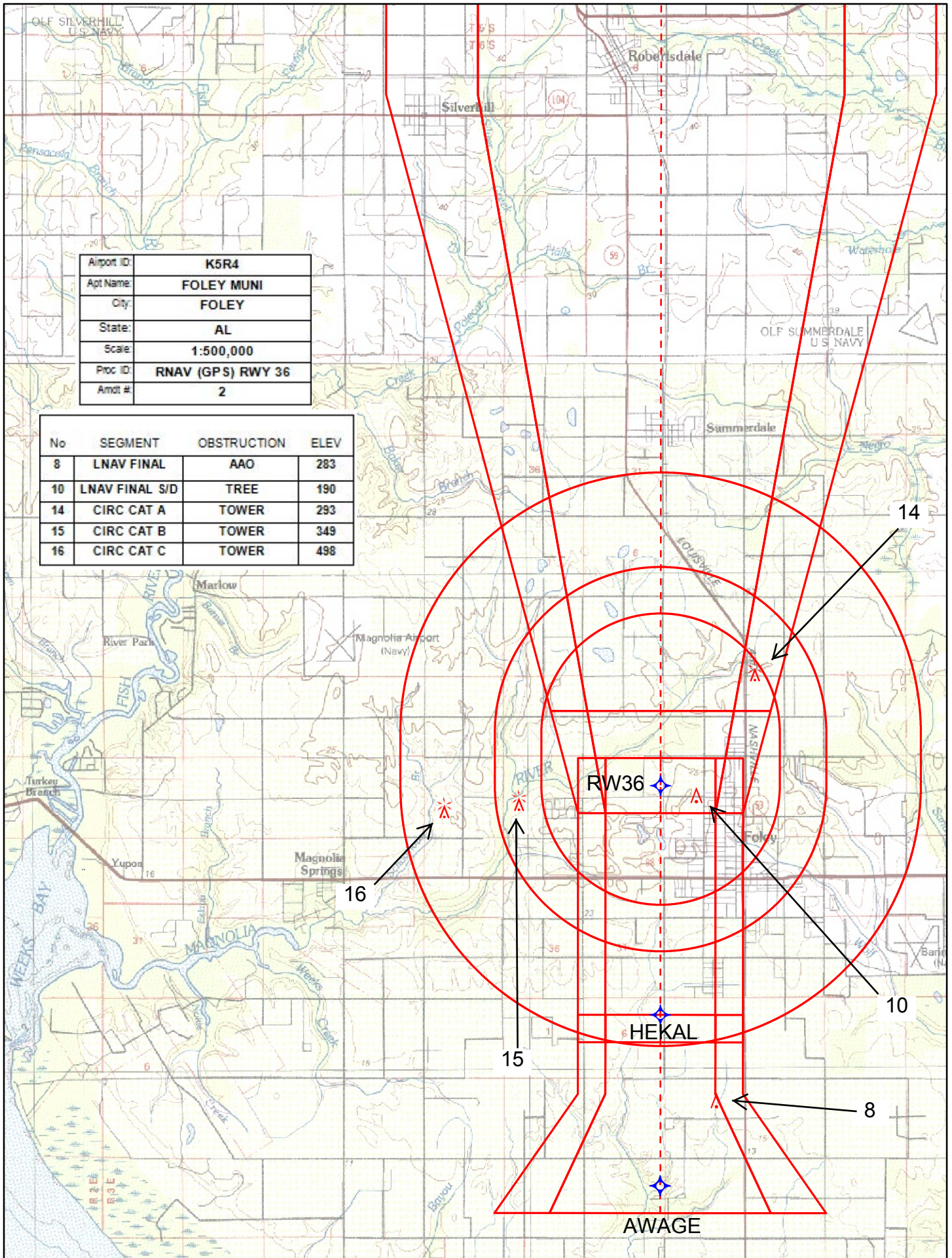
Airport ID:	K5R4	No	STRAIGHT-IN (PT) TAA		
Apt Name:	FOLEY MUNI		SEGMENT	OBSTRUCTION	ELEV
City:	FOLEY	3	092 CW 272	TOWER	2049
State:	AL				
Scale:	1:500,000				
Proc ID:	RNAV (GPS) RWY 36				
Amdt #:	2				





Airport ID:	K5R4
Apt Name:	FOLEY MUNI
City:	FOLEY
State:	AL
Scale:	1:500,000
Proc ID:	RNAV (GPS) RWY 36
Amdt #:	2

No	SEGMENT	OBSTRUCTION	ELEV
8	LNAV FINAL	AAO	283
10	LNAV FINAL S/D	TREE	190
14	CIRC CAT A	TOWER	293
15	CIRC CAT B	TOWER	349
16	CIRC CAT C	TOWER	498



TERMINAL AIRSPACE DATA REQUIREMENTS

CITY: FOLEY

STATE: AL

AIRPORT NAME: FOLEY MUNI

ID: K5R4

PROCEDURE: RNAV (GPS) RWY 36

AMDT: 2

DOCKET # :

(96-AXX-X/Required/Not Required)

ALL DIST TO 1/100 NM; ELEV TO NEAREST FT; COORD TO 1/100 SEC; DEG TO 1/100 DG.

1. Distance from	THLD	to 1000' point	3.03
(Enter THLD, FAF, ARP, FACILITY, as appropriate)			
2. Width of	THLD	segment at 1000' point	1.20
(Enter appropriate segment , final, intermediate, etc.)			
3. True Course of	FINAL	segment containing 1000' point	000.04
4. High Terrain in	FINAL	segment containing 1000' point	142
5. Distance from	FAF	to 1500' point	3.30
(If 1500' point in PT maneuvering area or holding pattern note in remarks)			
6. Width of	INTERMEDIATE	segment at 1500' point	4.00
7. True Course of	INTERMEDIATE	segment containing 1500' point	000.04
8. High Terrain in	INTERMEDIATE	segment containing 1500' point	72
9. Threshold Coordinates (if straight-in) ...	302523.18N	/	0874203.48W
10. ARP Coordinates	302539.60N	/	0874203.50W
11. Runway Approach End and distance furthest from ARP.....RWY			18
		Distance	0.31 NM
12. FAF Coordinates	302100.80N	/	0874203.69W
(Click to Select)			

REMARKS: RWY 36 THRESHOLD DISPLACED 187 FEET.

TAA UTILIZES 30NM RADII FROM IF/IAF (WIBIK): 301453.93N/0874203.98W