

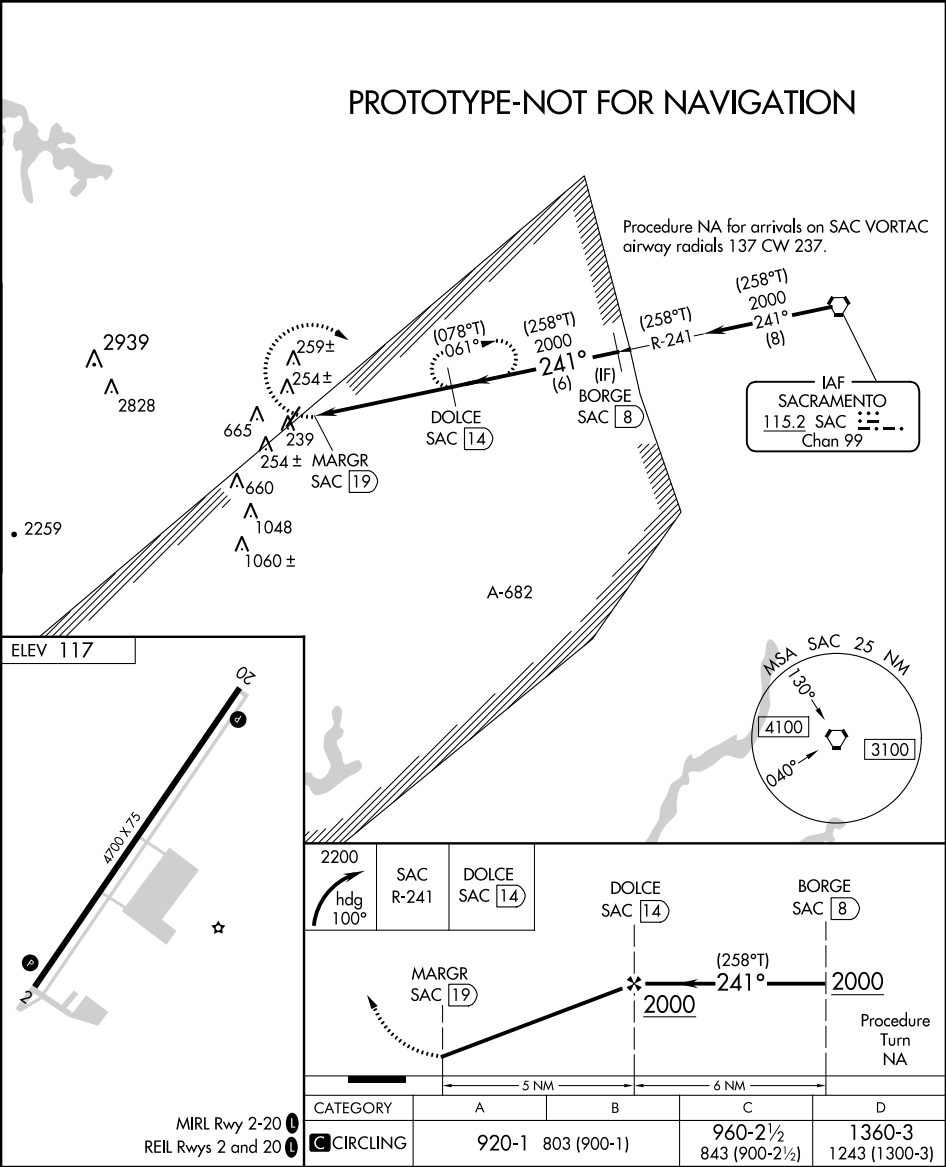
Flight Procedure Tracking Form		Action: FLIGHT CHECK	Task Type: IAP	Date Open: 11/16/2015	Task #: 2015061019045001003	Request #: 20150610190450
Procedure: VOR-A AMDT 6			Airport ID: KVCB	Airport: NUT TREE		Reimbursable #: NO
City: VACAVILLE	ST: CA	GPS #:	Estimated Chart Date: 08/17/2017		FICO #:	
Fac ID: SAC		Fac. Type: VORTAC			Specialist:	
Procedure Review						
	Rec'd	Rel'd	Full Name	Comments		
Lead:	02/10/2017					
QA:			J ZEDER 05/11/2017			
Liaison:						
Procedure Comments: ENROUTE-NON Remark Type: INFORMATION						
ASSIGNED MAGVAR: KVCB: OLD 15E - NEW 13E						
PENDING DATA USED FOR KVCB AIRPORT.						
CONTACT ROBERT HAMILTON, AJV-452 MANAGER, 405.954.4608						

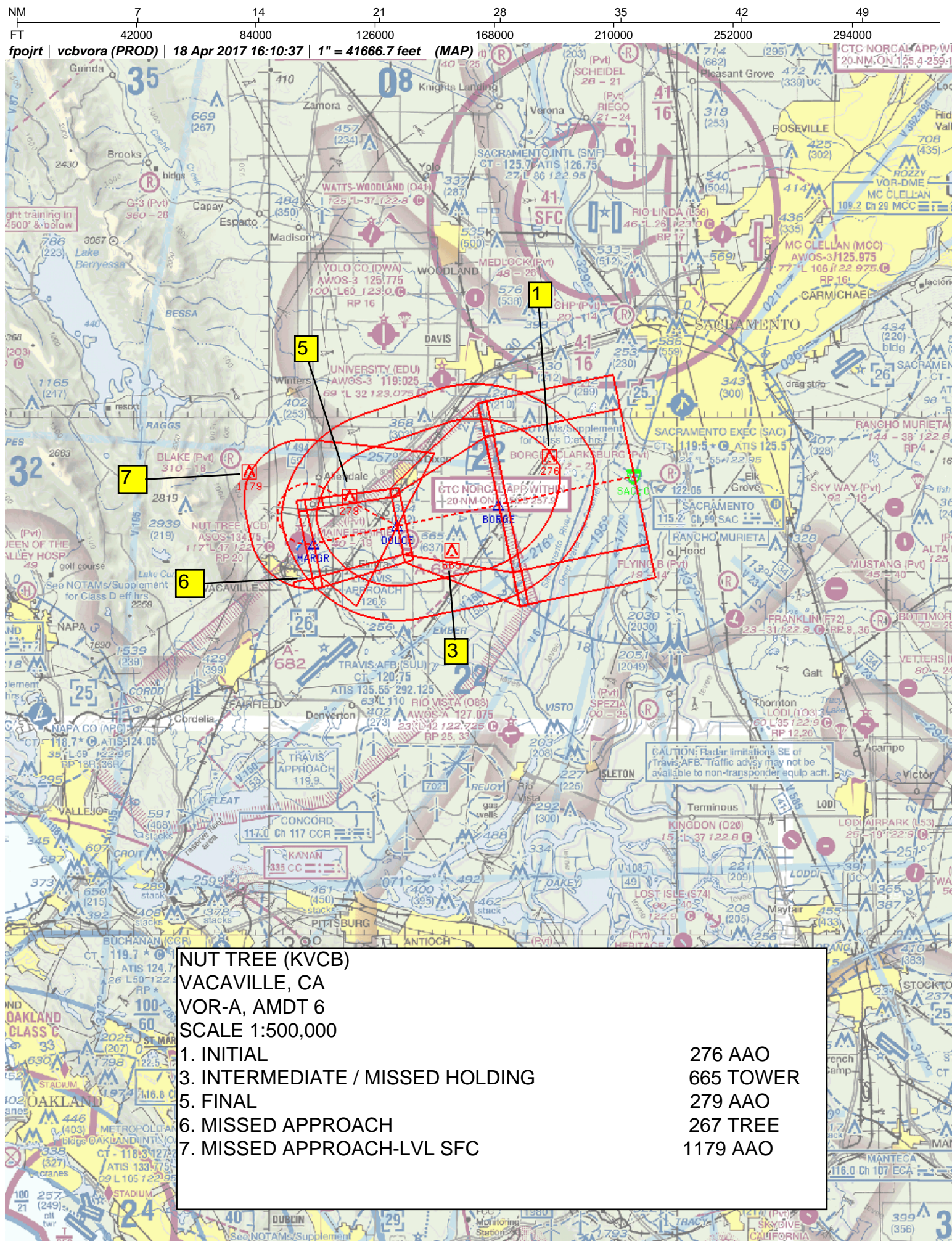
VORTAC SAC 115.2 Chan 99	APP CRS 241°	Rwy Idg TDZE Apt Elev	N/A N/A 117
--	------------------------	-----------------------------	--

VOR-A
NUT TREE (VCB)

⚠ Rwy 2 helicopter visibility reduction below 1 SM NA. DME required. Circling Rwy 2 NA at night. Circling NA west of Rwy 2-20.	MISSED APPROACH: Climbing right turn to 2200 on heading 100° and SAC R-241 to DOLCE/14 DME and hold.
--	--

ASOS 134.75	TRAVIS APP CON 128.4 281.45	UNICOM 122.7 (CTAF) 0
-----------------------	---------------------------------------	---------------------------------





NM 1 2 3 4 5 6 7 8 9 10
FT 8000 16000 24000 32000 40000 48000 56000 64000

fpojrt | vcbvora (PROD) | 18 Apr 2017 16:02:55 | 1" = 8333.3 feet (MAP)

