



Flight Procedure Tracking Form		Action: FLIGHT CHECK	Task Type: IAP	Date Open: 02/17/2016	Task #: 2015060927130705001	Request #: 20150609271307
Procedure: ILS Z OR LOC RWY 22R AMDT 4				Airport ID: KDTW	Airport: DETROIT METROPOLITAN WAYNE COUNTY	Reimbursable #: NO
City: DETROIT	ST: MI	GPS #:	Estimated Chart Date: 11/10/2016		FICO #:	
Fac ID: JKI		Fac. Type: ILS			Specialist: JEFFREY ROBINSON	
Procedure Review						
	Rec'd	Rel'd	Full Name	Comments		
Lead:	05/02/2016					
QA:						
Liaison:						
Procedure Comments:		ENROUTE-NON	Remark Type: INFORMATION			
ASSIGNED MAG VAR, KDTW: OLD 6W-NEW 7W. I-JKI: OLD 6W-NEW 7W.		<div style="text-align: center;">  </div>				
ESVS: 11 -- DETROIT (JKI) LOC (3), DETROIT (JKI) GS (5), DETROIT (HJT) DME (3).		<div style="text-align: right;">  </div>				
CONTACT: TONY LAWSON / JACOB POWERS, 405-954-2788 / 8702.						

DETROIT, MICHIGAN

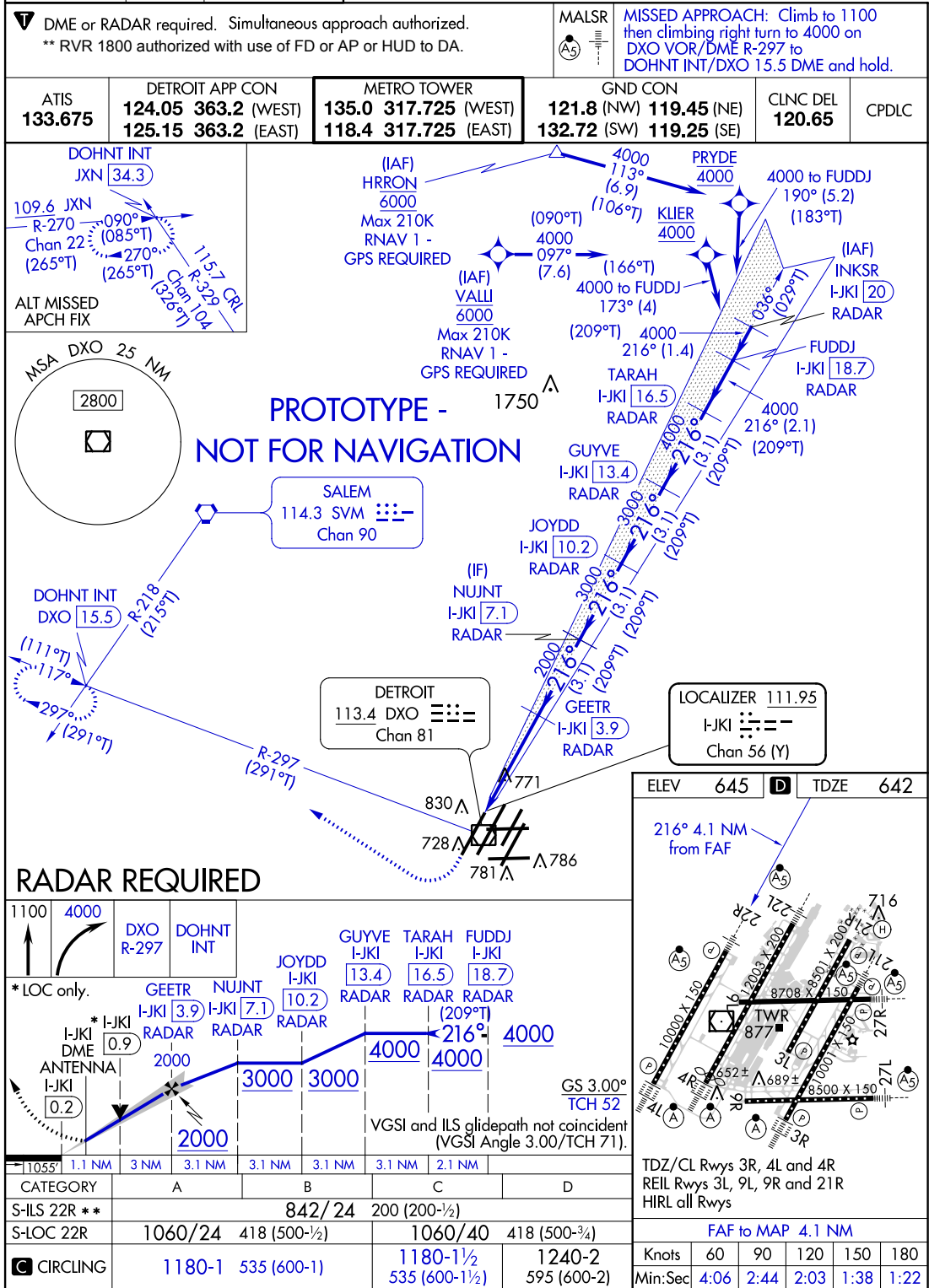
AL-119 (FAA)

FIG

LOC/DME I-JKI 111.95 Chan 52 (Y)	APP CRS 216°	Rwy Idg TDZE Apt Elev	10001 642 645
--	------------------------	-----------------------------	--

ILS Z or LOC RWY 22R

DETROIT METROPOLITAN WAYNE COUNTY (D'TW)



AUTOMATED AL-119 ILS Z or LOC RWY 22R

DETROIT, MICHIGAN

DETROIT METROPOLITAN WAYNE COUNTY (D'TW)

Amdt 4 FIG

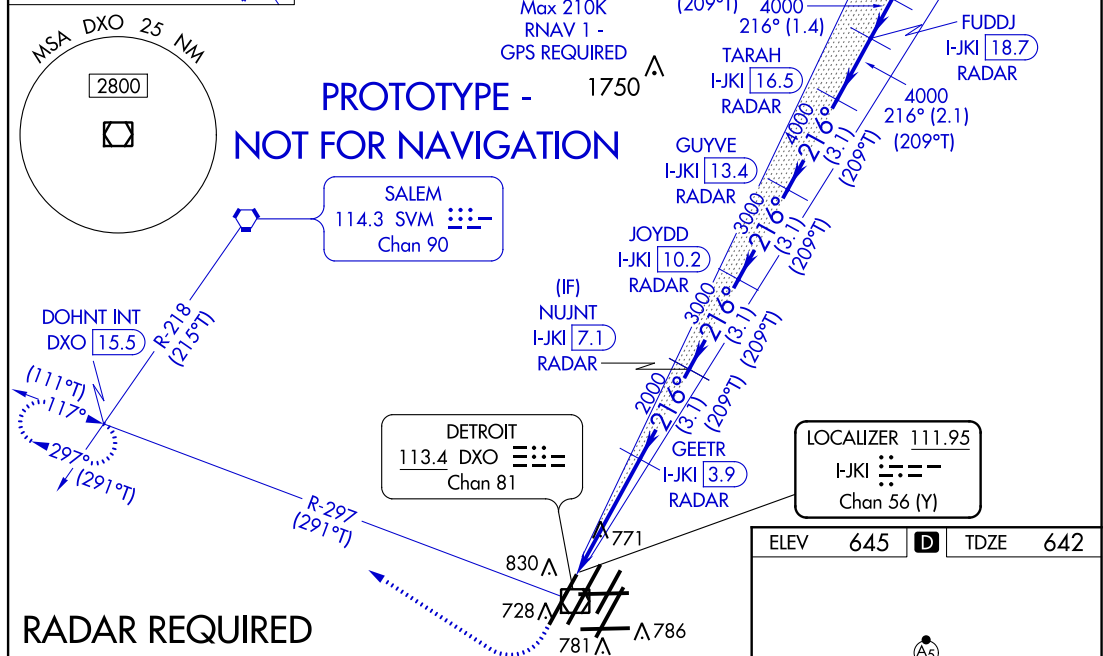
42°13'N-83°21'W

ILS Z or LOC RWY 22R

FIG

ILS Z RWY 22R (SA CAT I & II)
DETROIT METROPOLITAN WAYNE COUNTY (DTW)

MISSED APPROACH: Climb to 1100 then climbing right turn to 4000 on DXO VOR/DME R-297 to DOHNT INT/DXO 15.5 DME and hold

[illegible]

TDZ/CL Rwys 3R, 4L and 4R
REIL Rwys 3L, 9L, 9R and 21R
HIRL all Rwys

DETROIT METROPOLITAN WAYNE COUNTY (DTW)

ILS Z RWY 22R (SA CAT I & II)

EC-1
07/26/2016
COMPILER: LS
REVIEWER:
DBL. CHKR:
EFF: FIG

LOC/DME I-JKI 111.95 Chan 56 (Y)	APP CRS 215°	Rwy Idg TDZE Apt Elev	10000 642 645
--	------------------------	-----------------------------	--

ILS Z or LOC RWY 22R
DETROIT METROPOLITAN WAYNE COUNTY (DTW)

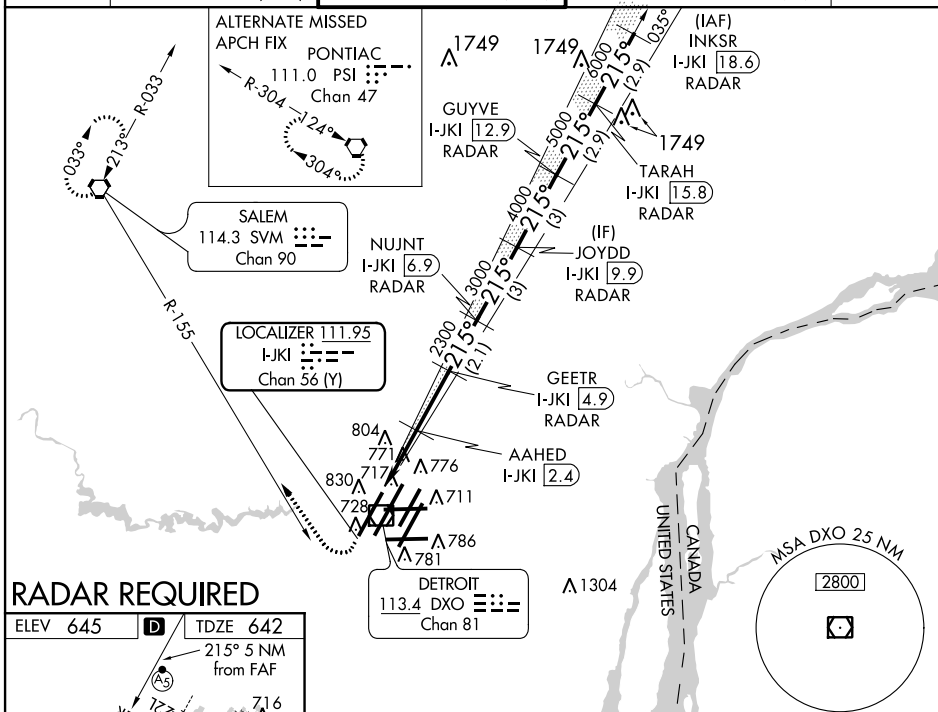
T **RVR 1800 authorized with the use of FD or AP or HUD to DA.
Simultaneous approach authorized with Rwy 21L.
DME or Radar Required.

MALSR



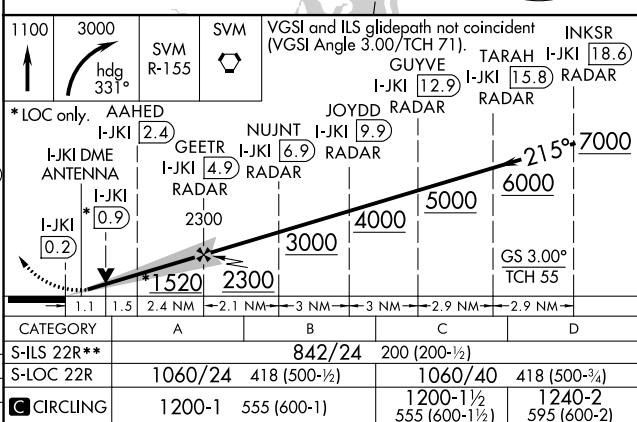
MISSED APPROACH: Climb to 1100 then climbing right turn to 3000 on heading 331° and SVM VORTAC R-155 direct SVM VORTAC and hold.

ATIS 133.675	DETROIT APP CON 124.05 363.2 (WEST) 125.15 363.2 (EAST)	METRO TOWER 135.0 317.725 (WEST) 118.4 317.725 (EAST)	GND CON 121.8 (NW) 119.45 (NE) 132.72 (SW) 119.25 (SE)	CLNC DEL 120.65
------------------------	---	---	--	---------------------------



RADAR REQUIRED

FAF to MAP 5 NM					
Knots	60	90	120	150	180
Min:Sec	5:00	3:20	2:30	2:00	1:40



DETROIT, MICHIGAN

Amdt 3 18SEP14

DETROIT METROPOLITAN WAYNE COUNTY (DTW)

42°13'N-83°21'W

ILS Z or LOC RWY 22R

EC-1, 23 JUN 2016 to 21 JUL 2016

EC-1, 23 JUN 2016 to 21 JUL 2016

OLD

DETROIT, MICHIGAN

AL-119 (FAA)

16035

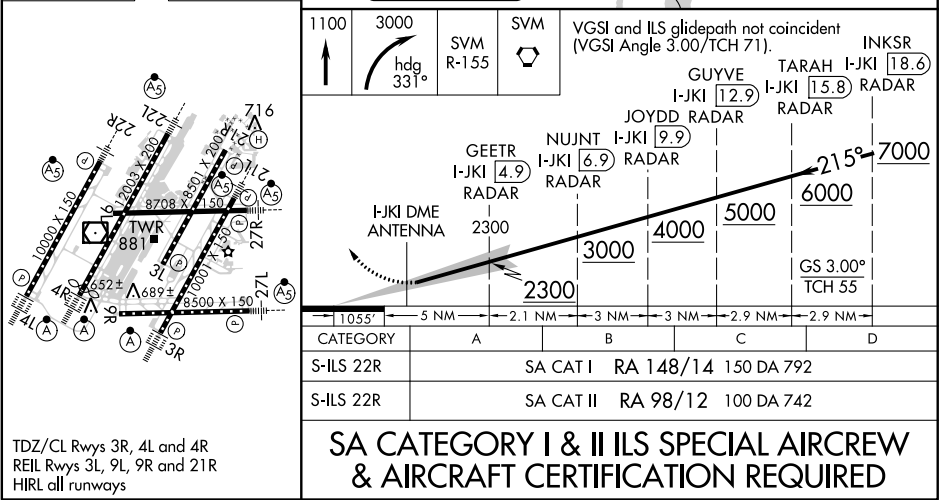
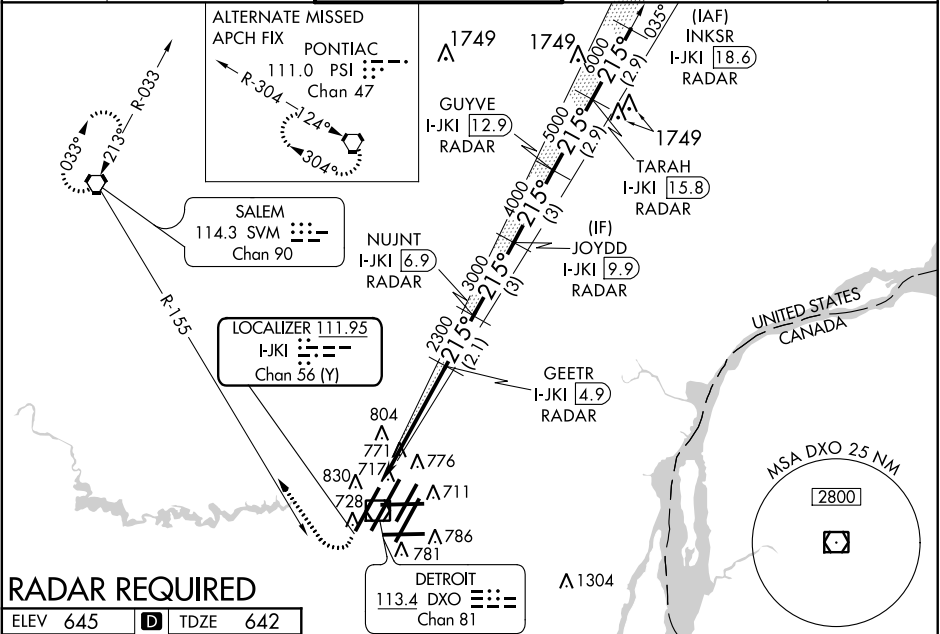
LOC/DME I-JKI	APP CRS	Rwy Idg	10000
111.95	215°	TDZE	642
Chan 56 (Y)		Apt Elev	645

ILS Z RWY 22R (SA CAT I & II)
DETROIT METROPOLITAN WAYNE COUNTY (DTW)

Simultaneous approach authorized with Rwy 21L. DME or Radar Required.
SA CAT I: Requires specific OPSPEC, MSPEC, or LOA approval and use of HUD to DH. SA CAT II: Reduced lighting: requires specific OPSPEC, MSPEC, or LOA approval and use of Autoland or HUD to touchdown.

MALSR
MISSED APPROACH: Climb to 1100 then climbing right turn to 3000 on heading 331° and SVM VORTAC R-155 direct SVM VORTAC and hold.

ATIS	DETROIT APP CON	METRO TOWER	GND CON	CLNC DEL
133.675	124.05 363.2 (WEST) 125.15 363.2 (EAST)	135.0 317.725 (WEST) 118.4 317.725 (EAST)	121.8 (NW) 119.45 (NE) 132.72 (SW) 119.25 (SE)	120.65



DETROIT, MICHIGAN
Amdt 3 18SEP14

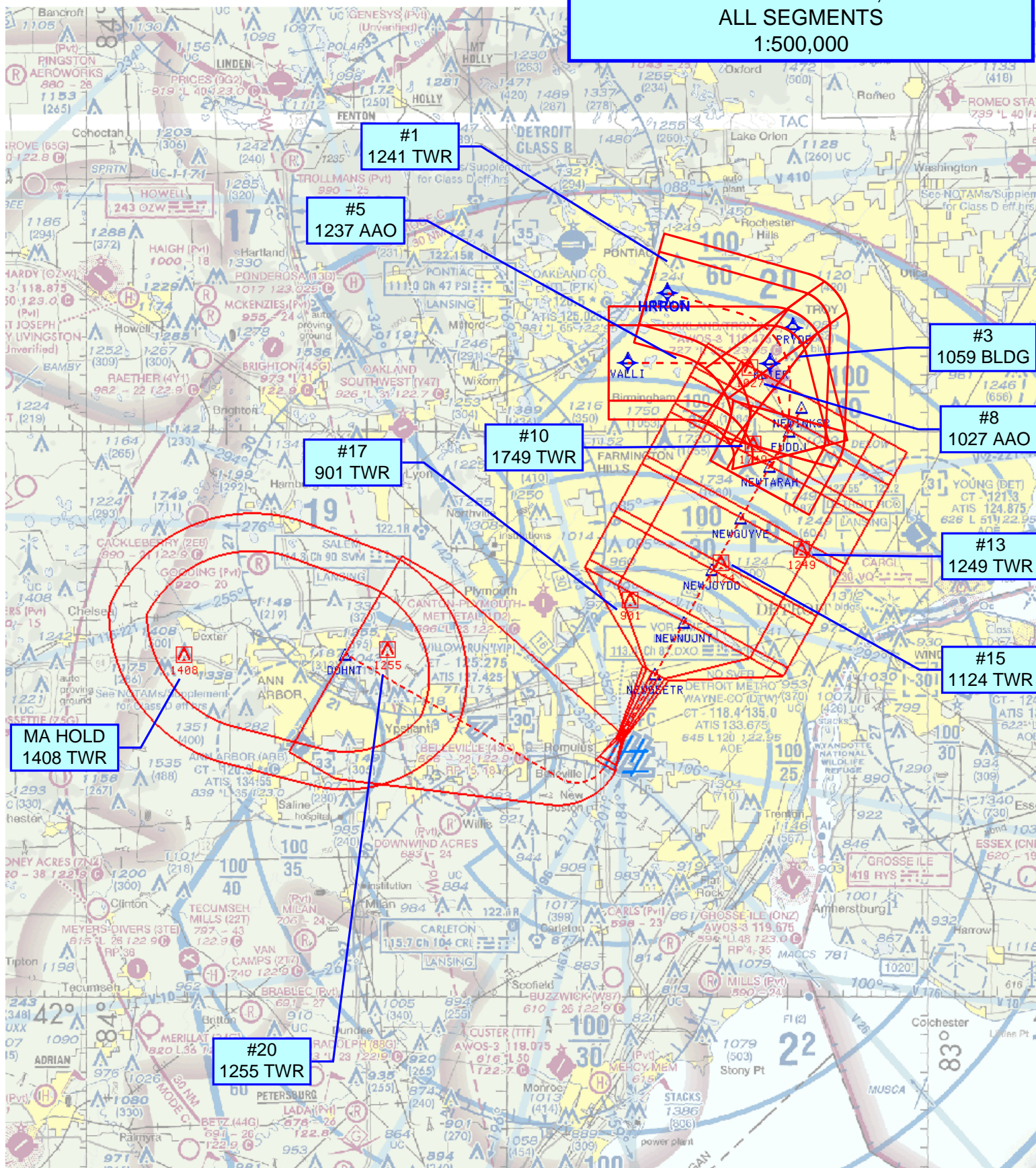
DETROIT METROPOLITAN WAYNE COUNTY (DTW)
42°13'N-83°21'W
ILS Z RWY 22R (SA CAT I & II)

EC-1, 23 JUN 2016 to 21 JUL 2016

EC-1, 23 JUN 2016 to 21 JUL 2016

KDTW
DETROIT METROPOLITAN WAYNE COUNTY
DETROIT, MI

ILS Z OR LOC RWY 22R, AMDT 4
ALL SEGMENTS
1:500,000



NM 7 14 21 28 35 42 49
FT 42000 84000 126000 168000 210000 252000 294000

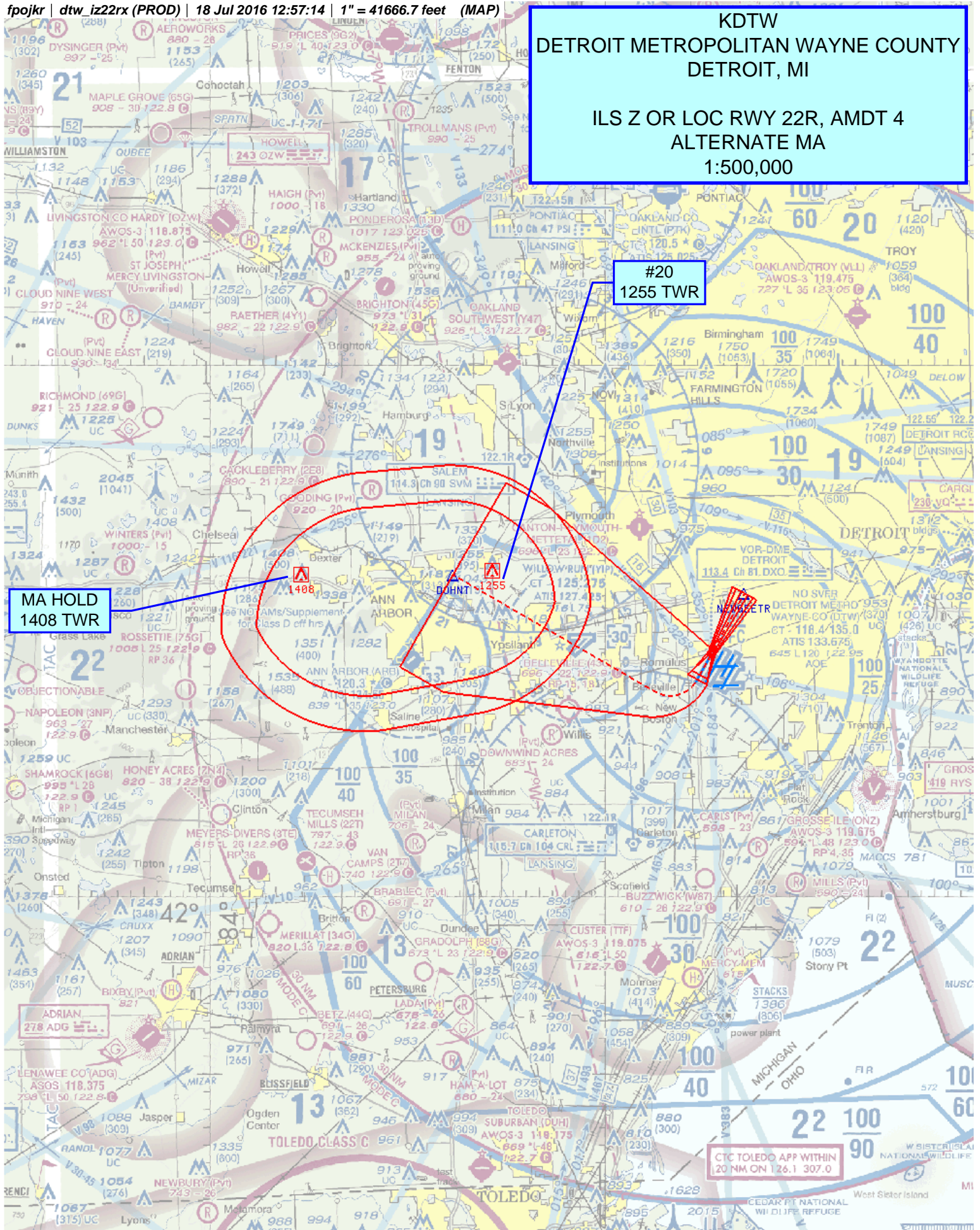
fpojkr | dtw_iz22rx (PROD) | 18 Jul 2016 12:57:14 | 1" = 41666.7 feet (MAP)

KDTW
DETROIT METROPOLITAN WAYNE COUNTY
DETROIT, MI

ILS Z OR LOC RWY 22R, AMDT 4
ALTERNATE MA
1:500,000

#20
1255 TWR

MA HOLD
1408 TWR

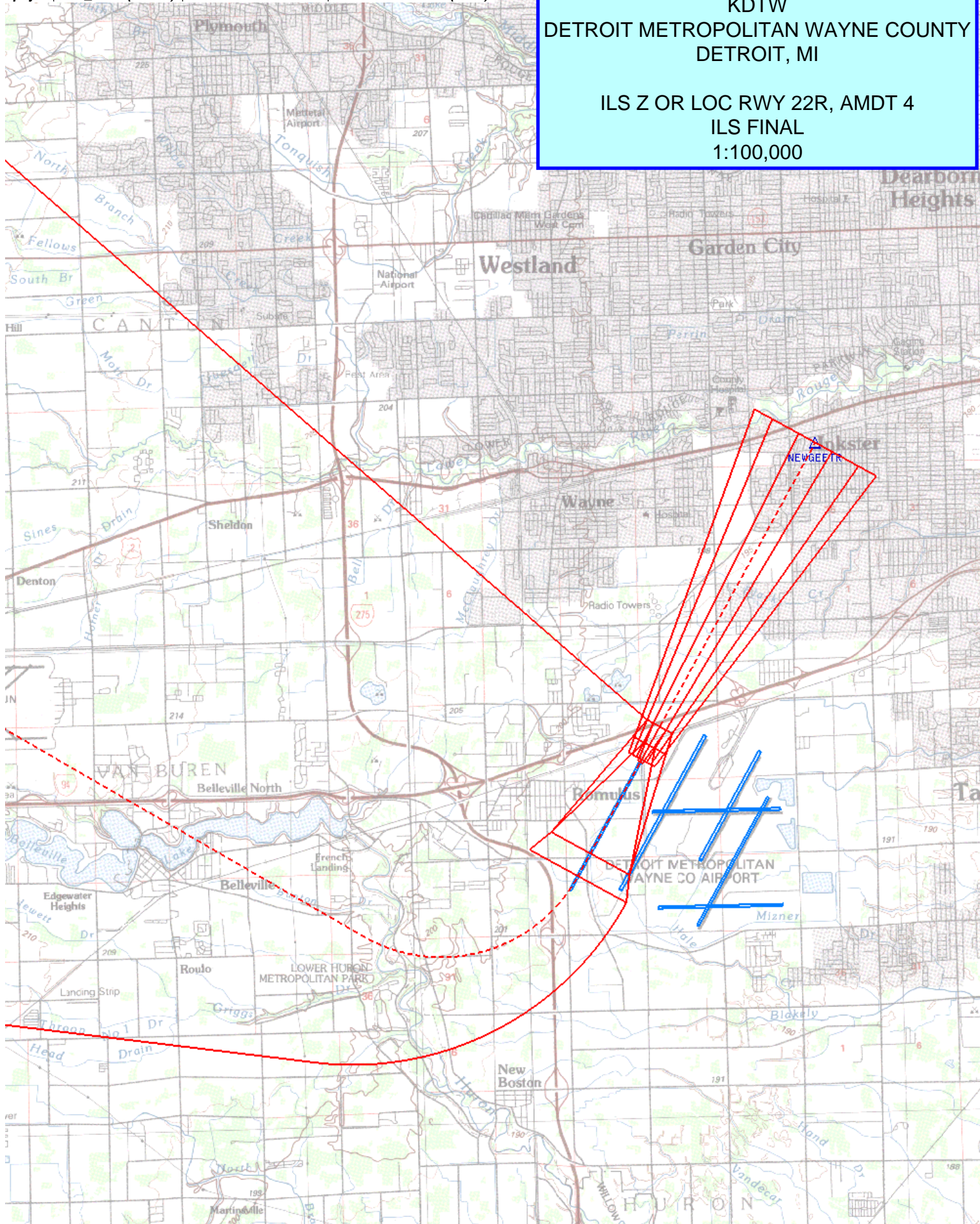


NM 1 2 3 4 5 6 7 8 9 10
FT 8000 16000 24000 32000 40000 48000 56000 64000

fpojkr | dtw_iz22r (PROD) | 25 Jul 2016 17:47:16 | 1" = 8333.3 feet (MAP)

KDTW
DETROIT METROPOLITAN WAYNE COUNTY
DETROIT, MI

ILS Z OR LOC RWY 22R, AMDT 4
ILS FINAL
1:100,000



NM
 1 2 3 4 5 6 7 8 9 10
 FT
 8000 16000 24000 32000 40000 48000 56000 64000

fpojkr | dtw_iz22r (PROD) | 25 Jul 2016 17:49:25 | 1" = 8333.3 feet (MAP)

KDTW
DETROIT METROPOLITAN WAYNE COUNTY
DETROIT, MI

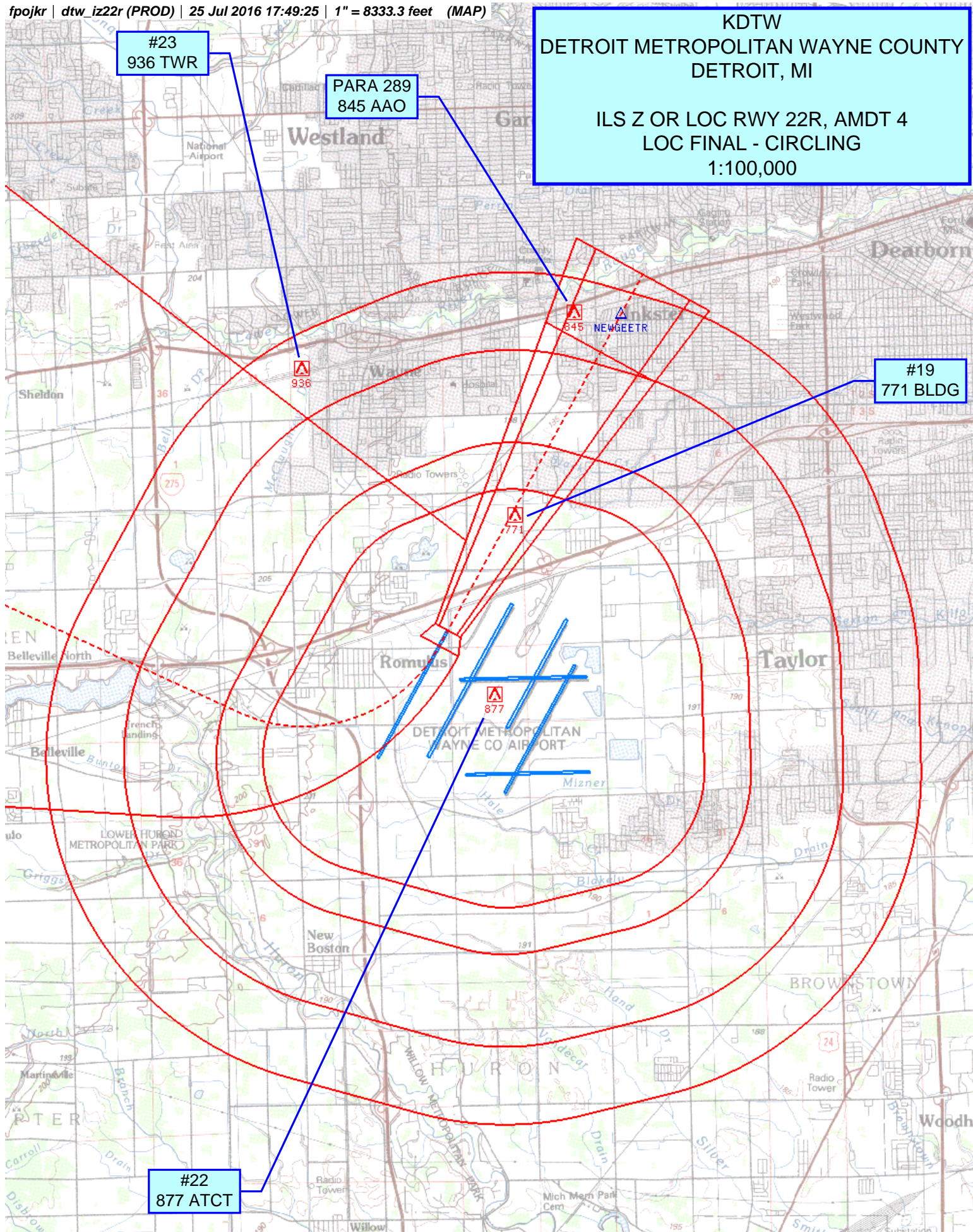
ILS Z OR LOC RWY 22R, AMDT 4
LOC FINAL - CIRCLING
1:100,000

#23
936 TWR

PARA 289
845 AAO

#19
771 BLDG

#22
877 ATCT



ESV Details

Originating Office :		Airspace Docket Number :		Request Type : Establish		
Facility Data						
Chart Name : FUDDJ, IZL22R, KDTW		City : DETROIT METRO WAYNE CO		Ident : HJT		State : MI
Type/Class : DME		Frequency : M1143		Reference No.: 16072611		
Expanded Service Volume Data: (Requesting Officer)						
ESV ID	Radial 1	Radial 2	Distance	Minimum Altitude	Maximum Altitude	
FAA 010601-011	35	0	21	40	67	
Requirement: FUDDJ, IZL22R, KDTW						
Signature: Robinson Jeffrey		Routing Symbol: AJV-5421				Date: 07/26/2016
Expanded Service Volume Data: (FMO)						
ESV ID	Radial 1	Radial 2	Distance	Minimum Altitude	Maximum Altitude	Action Type
FAA 010601-011	35	0	21	40	67	APPROVE
Requirement/Remarks: FUDDJ, IZL22R, KDTWAPPROVED. FREQ. PROTECTION & FIELD STRENGTH. PENDING FLIGHT INSPECT @ REQUIRED. DIST. & MIN ALT.						
Signature: Hughes Dennis		Routing Symbol:			Date: 07/26/2016	
Expanded Service Volume Data: (Super FMO)						
ESV ID	Radial 1	Radial 2	Distance	Minimum Altitude	Maximum Altitude	Action Type
FAA 010601-011	35	0	21	40	67	APPROVE
Requirement/Remarks: FUDDJ, IZL22R, KDTWAPPROVED. FREQ. PROTECTION & FIELD STRENGTH. PENDING FLIGHT INSPECT @ REQUIRED. DIST. & MIN ALT.						
Signature: Hughes Dennis		Routing Symbol:			Date: 07/26/2016	
Expanded Service Volume Data: (FIFO)						
ESV ID	Radial 1	Radial 2	Distance	Minimum Altitude	Maximum Altitude	Action Type
FAA 010601-011	35	0				
Requirement/Remarks:						
Signature:		Routing Symbol:			Date:	

ESV Details

Originating Office :		Airspace Docket Number :		Request Type : Establish		
Facility Data						
Chart Name : FUDDJ, IZ22R, DTW		City : DETROIT METRO WAYNE CO		Ident : JKI		State : MI
Type/Class : GS		Frequency : M330.95		Reference No.: 16072547		
Expanded Service Volume Data: (Requesting Officer)						
ESV ID	Radial 1	Radial 2	Distance	Minimum Altitude	Maximum Altitude	
FAA 010616-008	35	0	19	40	67	
Requirement: FUDDJ, IZ22R, DTW						
Signature: Robinson Jeffrey			Routing Symbol: AJV-5421			Date: 07/21/2016
Expanded Service Volume Data: (FMO)						
ESV ID	Radial 1	Radial 2	Distance	Minimum Altitude	Maximum Altitude	Action Type
FAA 010616-008	35	0	19	40	67	APPROVE
Requirement/Remarks: FUDDJ, IZ22R, DTWAPPROVED. FREQ. PROTECTION & FIELD STRENGTH. PENDING FLIGHT INSPECT @ REQUIRED. DIST. & MIN ALT.						
Signature: Pape Gregory			Routing Symbol:		Date: 07/25/2016	
Expanded Service Volume Data: (Super FMO)						
ESV ID	Radial 1	Radial 2	Distance	Minimum Altitude	Maximum Altitude	Action Type
FAA 010616-008	35	0	19	40	67	APPROVE
Requirement/Remarks: FUDDJ, IZ22R, DTWAPPROVED. FREQ. PROTECTION & FIELD STRENGTH. PENDING FLIGHT INSPECT @ REQUIRED. DIST. & MIN ALT.						
Signature: Hughes Dennis			Routing Symbol:		Date: 07/26/2016	
Expanded Service Volume Data: (FIFO)						
ESV ID	Radial 1	Radial 2	Distance	Minimum Altitude	Maximum Altitude	Action Type
FAA 010616-008	35	0				
Requirement/Remarks:						
Signature:			Routing Symbol:		Date:	

ESV Details

Originating Office :		Airspace Docket Number :		Request Type : Establish		
Facility Data						
Chart Name : FUDDJ, IZ22R, DTW		City : ROMULUS		Ident : JKI		State : MI
Type/Class : LOC		Frequency : M111.95		Reference No.: 16072548		
Expanded Service Volume Data: (Requesting Officer)						
ESV ID	Radial 1	Radial 2	Distance	Minimum Altitude	Maximum Altitude	
FAA 010612-004	35	0	21	40	67	
Requirement: FUDDJ, IZ22R, DTW						
Signature: Robinson Jeffrey			Routing Symbol: AJV-5421			Date: 07/21/2016
Expanded Service Volume Data: (FMO)						
ESV ID	Radial 1	Radial 2	Distance	Minimum Altitude	Maximum Altitude	Action Type
FAA 010612-004	35	0	21	40	67	APPROVE
Requirement/Remarks: FUDDJ, IZ22R, DTWAPPROVED. FREQ. PROTECTION & FIELD STRENGTH. PENDING FLIGHT INSPECT @ REQUIRED. DIST. & MIN ALT.						
Signature: Hughes Dennis			Routing Symbol:		Date: 07/26/2016	
Expanded Service Volume Data: (Super FMO)						
ESV ID	Radial 1	Radial 2	Distance	Minimum Altitude	Maximum Altitude	Action Type
FAA 010612-004	35	0	21	40	67	APPROVE
Requirement/Remarks: FUDDJ, IZ22R, DTWAPPROVED. FREQ. PROTECTION & FIELD STRENGTH. PENDING FLIGHT INSPECT @ REQUIRED. DIST. & MIN ALT.						
Signature: Hughes Dennis			Routing Symbol:		Date: 07/26/2016	
Expanded Service Volume Data: (FIFO)						
ESV ID	Radial 1	Radial 2	Distance	Minimum Altitude	Maximum Altitude	Action Type
FAA 010612-004	35	0				
Requirement/Remarks:						
Signature:			Routing Symbol:		Date:	

ESV Details

Originating Office :		Airspace Docket Number :		Request Type : Establish		
Facility Data						
Chart Name : GUYVE, IZ22R, DTW		City : DETROIT METRO WAYNE CO		Ident : JKI		State : MI
Type/Class : GS		Frequency : M330.95		Reference No.: 16072544		
Expanded Service Volume Data: (Requesting Officer)						
ESV ID	Radial 1	Radial 2	Distance	Minimum Altitude	Maximum Altitude	
FAA 010616-006	35	0	14	40	50	
Requirement: GUYVE, IZ22R, DTW						
Signature: Robinson Jeffrey		Routing Symbol: AJV-5421				Date: 07/21/2016
Expanded Service Volume Data: (FMO)						
ESV ID	Radial 1	Radial 2	Distance	Minimum Altitude	Maximum Altitude	Action Type
FAA 010616-006	35	0	14	40	50	APPROVE
Requirement/Remarks: GUYVE, IZ22R, DTWAPPROVED. FREQ. PROTECTION & FIELD STRENGTH. PENDING FLIGHT INSPECT @ REQUIRED. DIST. & MIN ALT.						
Signature: Pape Gregory		Routing Symbol:			Date: 07/25/2016	
Expanded Service Volume Data: (Super FMO)						
ESV ID	Radial 1	Radial 2	Distance	Minimum Altitude	Maximum Altitude	Action Type
FAA 010616-006	35	0	14	40	50	APPROVE
Requirement/Remarks: GUYVE, IZ22R, DTWAPPROVED. FREQ. PROTECTION & FIELD STRENGTH. PENDING FLIGHT INSPECT @ REQUIRED. DIST. & MIN ALT.						
Signature: Hughes Dennis		Routing Symbol:			Date: 07/26/2016	
Expanded Service Volume Data: (FIFO)						
ESV ID	Radial 1	Radial 2	Distance	Minimum Altitude	Maximum Altitude	Action Type
FAA 010616-006	35	0				
Requirement/Remarks:						
Signature:		Routing Symbol:			Date:	

ESV Details

Originating Office :		Airspace Docket Number :		Request Type : Establish		
Facility Data						
Chart Name : INKSR, IZ22R, KDTW		City : DETROIT METRO WAYNE CO		Ident : HJT State : MI		
Type/Class : DME		Frequency : M1143		Reference No.: 16072618		
Expanded Service Volume Data: (Requesting Officer)						
ESV ID	Radial 1	Radial 2	Distance	Minimum Altitude	Maximum Altitude	
FAA 010601-012	35	0	23	40	72	
Requirement: INKSR, IZ22R, KDTW						
Signature: Robinson Jeffrey		Routing Symbol: AJV-5421			Date: 07/27/2016	
Expanded Service Volume Data: (FMO)						
ESV ID	Radial 1	Radial 2	Distance	Minimum Altitude	Maximum Altitude	Action Type
FAA 010601-012	35	0	23	40	72	APPROVE
Requirement/Remarks: INKSR, IZ22R, KDTWAPPROVED. FREQ. PROTECTION & FIELD STRENGTH. PENDING FLIGHT INSPECT @ REQUIRED. DIST. & MIN ALT.						
Signature: Hughes Dennis		Routing Symbol:			Date: 07/27/2016	
Expanded Service Volume Data: (Super FMO)						
ESV ID	Radial 1	Radial 2	Distance	Minimum Altitude	Maximum Altitude	Action Type
FAA 010601-012	35	0	23	40	72	APPROVE
Requirement/Remarks: INKSR, IZ22R, KDTWAPPROVED. FREQ. PROTECTION & FIELD STRENGTH. PENDING FLIGHT INSPECT @ REQUIRED. DIST. & MIN ALT.						
Signature: Hughes Dennis		Routing Symbol:			Date: 07/27/2016	
Expanded Service Volume Data: (FIFO)						
ESV ID	Radial 1	Radial 2	Distance	Minimum Altitude	Maximum Altitude	Action Type
FAA 010601-012	35	0				
Requirement/Remarks:						
Signature:		Routing Symbol:			Date:	

ESV Details

Originating Office :		Airspace Docket Number :		Request Type : Establish		
Facility Data						
Chart Name : INKSR, IZ22R, DTW		City : DETROIT METRO WAYNE CO		Ident : JKI State : MI		
Type/Class : GS		Frequency : M330.95		Reference No.: 16072549		
Expanded Service Volume Data: (Requesting Officer)						
ESV ID	Radial 1	Radial 2	Distance	Minimum Altitude	Maximum Altitude	
FAA 010616-009	35	0	21	40	72	
Requirement: INKSR, IZ22R, DTW						
Signature: Robinson Jeffrey		Routing Symbol: AJV-5421			Date: 07/21/2016	
Expanded Service Volume Data: (FMO)						
ESV ID	Radial 1	Radial 2	Distance	Minimum Altitude	Maximum Altitude	Action Type
FAA 010616-009	35	0	21	40	72	APPROVE
Requirement/Remarks: INKSR, IZ22R, DTWAPPROVED. FREQ. PROTECTION & FIELD STRENGTH. PENDING FLIGHT INSPECT @ REQUIRED. DIST. & MIN ALT.						
Signature: Pape Gregory		Routing Symbol:			Date: 07/25/2016	
Expanded Service Volume Data: (Super FMO)						
ESV ID	Radial 1	Radial 2	Distance	Minimum Altitude	Maximum Altitude	Action Type
FAA 010616-009	35	0	21	40	72	APPROVE
Requirement/Remarks: INKSR, IZ22R, DTWAPPROVED. FREQ. PROTECTION & FIELD STRENGTH. PENDING FLIGHT INSPECT @ REQUIRED. DIST. & MIN ALT.						
Signature: Hughes Dennis		Routing Symbol:			Date: 07/26/2016	
Expanded Service Volume Data: (FIFO)						
ESV ID	Radial 1	Radial 2	Distance	Minimum Altitude	Maximum Altitude	Action Type
FAA 010616-009	35	0				
Requirement/Remarks:						
Signature:		Routing Symbol:			Date:	

ESV Details

Originating Office :		Airspace Docket Number :		Request Type : Establish		
Facility Data						
Chart Name : INKSR, IZ22R, DTW		City : ROMULUS		Ident : JKI		State : MI
Type/Class : LOC		Frequency : M111.95		Reference No.: 16072550		
Expanded Service Volume Data: (Requesting Officer)						
ESV ID	Radial 1	Radial 2	Distance	Minimum Altitude	Maximum Altitude	
FAA 010612-005	35	0	23	40	72	
Requirement: INKSR, IZ22R, DTW						
Signature: Robinson Jeffrey		Routing Symbol: AJV-5421				Date: 07/21/2016
Expanded Service Volume Data: (FMO)						
ESV ID	Radial 1	Radial 2	Distance	Minimum Altitude	Maximum Altitude	Action Type
FAA 010612-005	35	0	23	40	72	APPROVE
Requirement/Remarks: INKSR, IZ22R, DTWAPPROVED. FREQ. PROTECTION & FIELD STRENGTH. PENDING FLIGHT INSPECT @ REQUIRED. DIST. & MIN ALT.						
Signature: Hughes Dennis		Routing Symbol:			Date: 07/26/2016	
Expanded Service Volume Data: (Super FMO)						
ESV ID	Radial 1	Radial 2	Distance	Minimum Altitude	Maximum Altitude	Action Type
FAA 010612-005	35	0	23	40	72	APPROVE
Requirement/Remarks: INKSR, IZ22R, DTWAPPROVED. FREQ. PROTECTION & FIELD STRENGTH. PENDING FLIGHT INSPECT @ REQUIRED. DIST. & MIN ALT.						
Signature: Hughes Dennis		Routing Symbol:			Date: 07/26/2016	
Expanded Service Volume Data: (FIFO)						
ESV ID	Radial 1	Radial 2	Distance	Minimum Altitude	Maximum Altitude	Action Type
FAA 010612-005	35	0				
Requirement/Remarks:						
Signature:		Routing Symbol:			Date:	

ESV Details

Originating Office :		Airspace Docket Number :		Request Type : Establish		
Facility Data						
Chart Name : JOYDD, IZ22R, DTW		City : DETROIT METRO WAYNE CO		Ident : JKI		State : MI
Type/Class : GS		Frequency : M330.95		Reference No.: 16072543		
Expanded Service Volume Data: (Requesting Officer)						
ESV ID	Radial 1	Radial 2	Distance	Minimum Altitude	Maximum Altitude	
FAA 010616-005	35	0	11	30	40	
Requirement: JOYDD, IZ22R, DTW						
Signature: Robinson Jeffrey			Routing Symbol: AJV-5421			Date: 07/21/2016
Expanded Service Volume Data: (FMO)						
ESV ID	Radial 1	Radial 2	Distance	Minimum Altitude	Maximum Altitude	Action Type
FAA 010616-005	35	0	11	30	40	APPROVE
Requirement/Remarks: JOYDD, IZ22R, DTWAPPROVED. FREQ. PROTECTION & FIELD STRENGTH. PENDING FLIGHT INSPECT @ REQUIRED. DIST. & MIN ALT.						
Signature: Pape Gregory			Routing Symbol:		Date: 07/25/2016	
Expanded Service Volume Data: (Super FMO)						
ESV ID	Radial 1	Radial 2	Distance	Minimum Altitude	Maximum Altitude	Action Type
FAA 010616-005	35	0	11	30	40	APPROVE
Requirement/Remarks: JOYDD, IZ22R, DTWAPPROVED. FREQ. PROTECTION & FIELD STRENGTH. PENDING FLIGHT INSPECT @ REQUIRED. DIST. & MIN ALT.						
Signature: Hughes Dennis			Routing Symbol:		Date: 07/26/2016	
Expanded Service Volume Data: (FIFO)						
ESV ID	Radial 1	Radial 2	Distance	Minimum Altitude	Maximum Altitude	Action Type
FAA 010616-005	35	0				
Requirement/Remarks:						
Signature:			Routing Symbol:		Date:	

ESV Details

Originating Office :		Airspace Docket Number :		Request Type : Establish		
Facility Data						
Chart Name : TARAH, IZL22R, KDTW		City : DETROIT METRO WAYNE CO		Ident : HJT		State : MI
Type/Class : DME		Frequency : M1143		Reference No.: 16072610		
Expanded Service Volume Data: (Requesting Officer)						
ESV ID	Radial 1	Radial 2	Distance	Minimum Altitude	Maximum Altitude	
FAA 010601-010	35	0	19	40	60	
Requirement: TARAH, IZL22R, KDTW						
Signature: Robinson Jeffrey		Routing Symbol: AJV-5421				Date: 07/26/2016
Expanded Service Volume Data: (FMO)						
ESV ID	Radial 1	Radial 2	Distance	Minimum Altitude	Maximum Altitude	Action Type
FAA 010601-010	35	0	19	40	60	APPROVE
Requirement/Remarks: TARAH, IZL22R, KDTWAPPROVED. FREQ. PROTECTION & FIELD STRENGTH. PENDING FLIGHT INSPECT @ REQUIRED. DIST. & MIN ALT.						
Signature: Hughes Dennis		Routing Symbol:			Date: 07/26/2016	
Expanded Service Volume Data: (Super FMO)						
ESV ID	Radial 1	Radial 2	Distance	Minimum Altitude	Maximum Altitude	Action Type
FAA 010601-010	35	0	19	40	60	APPROVE
Requirement/Remarks: TARAH, IZL22R, KDTWAPPROVED. FREQ. PROTECTION & FIELD STRENGTH. PENDING FLIGHT INSPECT @ REQUIRED. DIST. & MIN ALT.						
Signature: Hughes Dennis		Routing Symbol:			Date: 07/26/2016	
Expanded Service Volume Data: (FIFO)						
ESV ID	Radial 1	Radial 2	Distance	Minimum Altitude	Maximum Altitude	Action Type
FAA 010601-010	35	0				
Requirement/Remarks:						
Signature:		Routing Symbol:			Date:	

ESV Details

Originating Office :		Airspace Docket Number :		Request Type : Establish		
Facility Data						
Chart Name : TARAH, IZ22R, DTW		City : DETROIT METRO WAYNE CO		Ident : JKI		State : MI
Type/Class : GS		Frequency : M330.95		Reference No.: 16072545		
Expanded Service Volume Data: (Requesting Officer)						
ESV ID	Radial 1	Radial 2	Distance	Minimum Altitude	Maximum Altitude	
FAA 010616-007	35	0	17	40	60	
Requirement: TARAH, IZ22R, DTW						
Signature: Robinson Jeffrey			Routing Symbol: AJV-5421			Date: 07/21/2016
Expanded Service Volume Data: (FMO)						
ESV ID	Radial 1	Radial 2	Distance	Minimum Altitude	Maximum Altitude	Action Type
FAA 010616-007	35	0	17	40	60	APPROVE
Requirement/Remarks: TARAH, IZ22R, DTWAPPROVED. FREQ. PROTECTION & FIELD STRENGTH. PENDING FLIGHT INSPECT @ REQUIRED. DIST. & MIN ALT.						
Signature: Pape Gregory			Routing Symbol:		Date: 07/25/2016	
Expanded Service Volume Data: (Super FMO)						
ESV ID	Radial 1	Radial 2	Distance	Minimum Altitude	Maximum Altitude	Action Type
FAA 010616-007	35	0	17	40	60	APPROVE
Requirement/Remarks: TARAH, IZ22R, DTWAPPROVED. FREQ. PROTECTION & FIELD STRENGTH. PENDING FLIGHT INSPECT @ REQUIRED. DIST. & MIN ALT.						
Signature: Hughes Dennis			Routing Symbol:		Date: 07/26/2016	
Expanded Service Volume Data: (FIFO)						
ESV ID	Radial 1	Radial 2	Distance	Minimum Altitude	Maximum Altitude	Action Type
FAA 010616-007	35	0				
Requirement/Remarks:						
Signature:			Routing Symbol:		Date:	

ESV Details

Originating Office :		Airspace Docket Number :		Request Type : Establish		
Facility Data						
Chart Name : TARAH, IZ22R, DTW		City : ROMULUS		Ident : JKI		State : MI
Type/Class : LOC		Frequency : M111.95		Reference No.: 16072546		
Expanded Service Volume Data: (Requesting Officer)						
ESV ID	Radial 1	Radial 2	Distance	Minimum Altitude	Maximum Altitude	
FAA 010612-003	35	0	19	40	60	
Requirement: TARAH, IZ22R, DTW						
Signature: Robinson Jeffrey			Routing Symbol: AJV-5421			Date: 07/21/2016
Expanded Service Volume Data: (FMO)						
ESV ID	Radial 1	Radial 2	Distance	Minimum Altitude	Maximum Altitude	Action Type
FAA 010612-003	35	0	19	40	60	APPROVE
Requirement/Remarks: TARAH, IZ22R, DTWAPPROVED. FREQ. PROTECTION & FIELD STRENGTH. PENDING FLIGHT INSPECT @ REQUIRED. DIST. & MIN ALT.						
Signature: Hughes Dennis			Routing Symbol:		Date: 07/26/2016	
Expanded Service Volume Data: (Super FMO)						
ESV ID	Radial 1	Radial 2	Distance	Minimum Altitude	Maximum Altitude	Action Type
FAA 010612-003	35	0	19	40	60	APPROVE
Requirement/Remarks: TARAH, IZ22R, DTWAPPROVED. FREQ. PROTECTION & FIELD STRENGTH. PENDING FLIGHT INSPECT @ REQUIRED. DIST. & MIN ALT.						
Signature: Hughes Dennis			Routing Symbol:		Date: 07/26/2016	
Expanded Service Volume Data: (FIFO)						
ESV ID	Radial 1	Radial 2	Distance	Minimum Altitude	Maximum Altitude	Action Type
FAA 010612-003	35	0				
Requirement/Remarks:						
Signature:			Routing Symbol:		Date:	



Federal Aviation Administration

Initial Development Notification for AIRNAV Pending Records

To: Janet Myers, National Flight Data Center, Sub Team B, AJV-5332

From: Jose Alfonso, Manager IFP Coordination Team, AJV-531

Subject: **ACTION:** Request for Pending Records **KDTW_DTW__DETROIT METROPOLITAN WAYNE COUNTY, DETROIT, MI US**

The Magnetic Variation (MV) data for the airport(s) and/or facility(s) listed will be revised effective concurrent with the publication of the procedure(s) listed below. Estimated Chart Date: 11/10/2016

Old Magnetic Variance (MV) W 6 1990 New MV W 7 2020

ECD	Airport ID		Procedure Name	AMDT #	Task Report Type Selections
6/23/2016	KDTW	DTW	RNAV (GPS) RWY 27 L AMDT 2A	/A	P-NOTAM
9/15/2016	KDTW	DTW	SID PALACE NINE DETROIT MI KDTW	/A	ENROUTE, FPT-INITIATED
9/15/2016	KDTW	DTW	SID ST CLAIR NINE DETROIT MI KDTW	/A	ENROUTE, FPT-INITIATED
11/10/2016	KDTW	DTW	ILS OR LOC RWY 21 L AMDT 12	/A	FPT-INITIATED, OAPM - CLEDET
11/10/2016	KDTW	DTW	ILS OR LOC RWY 22 L AMDT 31	/A	FPT-INITIATED, OAPM - CLEDET
11/10/2016	KDTW	DTW	ILS OR LOC RWY 27 L AMDT 5	/A	FPT-INITIATED, OAPM - CLEDET
11/10/2016	KDTW	DTW	ILS OR LOC RWY 27 R AMDT 13	/A	FPT-INITIATED, OAPM - CLEDET
11/10/2016	KDTW	DTW	ILS OR LOC RWY 3 R AMDT 17	/A	FPT-INITIATED, OAPM - CLEDET
11/10/2016	KDTW	DTW	ILS OR LOC RWY 4 R AMDT 19	/A	FPT-INITIATED, OAPM - CLEDET
11/10/2016	KDTW	DTW	ILS OR LOC Z RWY 22 R AMDT 4	/A	FPT-INITIATED, OAPM - CLEDET
11/10/2016	KDTW	DTW	ILS OR LOC Z RWY 4 L AMDT 4	/A	DECOM, FPT-INITIATED
11/10/2016	KDTW	DTW	ILS PRM RWY 21 L AMDT 1	/A	FPT-INITIATED, OAPM - CLEDET
11/10/2016	KDTW	DTW	ILS PRM RWY 22 L AMDT 1	/A	FPT-INITIATED, OAPM - CLEDET
11/10/2016	KDTW	DTW	ILS PRM RWY 3 R AMDT 2	/A	FPT-INITIATED, OAPM - CLEDET
11/10/2016	KDTW	DTW	ILS PRM RWY 4 R AMDT 3	/A	FPT-INITIATED, OAPM - CLEDET
11/10/2016	KDTW	DTW	ILS PRM Y RWY 22 R AMDT 1	/A	FPT-INITIATED, OAPM - CLEDET
11/10/2016	KDTW	DTW	ILS PRM Y RWY 4 L AMDT 2	/A	FPT-INITIATED, OAPM - CLEDET
11/10/2016	KDTW	DTW	ILS Y RWY 22 R AMDT 1	/A	FPT-INITIATED, OAPM - CLEDET
11/10/2016	KDTW	DTW	ILS Y RWY 4 L AMDT 1	/A	FPT-INITIATED, OAPM - CLEDET
11/10/2016	KDTW	DTW	RNAV (GPS) PRM RWY 21 L ORIG	/A	FPT-INITIATED, OAPM - CLEDET
11/10/2016	KDTW	DTW	RNAV (GPS) PRM RWY 22 L ORIG	/A	FPT-INITIATED, OAPM - CLEDET
11/10/2016	KDTW	DTW	RNAV (GPS) PRM RWY 3 R ORIG	/A	FPT-INITIATED, OAPM - CLEDET
11/10/2016	KDTW	DTW	RNAV (GPS) PRM RWY 4 R ORIG	/A	FPT-INITIATED, OAPM - CLEDET
11/10/2016	KDTW	DTW	RNAV (GPS) PRM Y RWY 22 R ORIG	/A	FPT-INITIATED, OAPM - CLEDET
11/10/2016	KDTW	DTW	RNAV (GPS) PRM Y RWY 4 L ORIG	/A	FPT-INITIATED, OAPM - CLEDET
11/10/2016	KDTW	DTW	RNAV (GPS) RWY 21 L AMDT 3	/A	FPT-INITIATED, OAPM - CLEDET
11/10/2016	KDTW	DTW	RNAV (GPS) RWY 22 L AMDT 2	/A	FPT-INITIATED, OAPM - CLEDET
11/10/2016	KDTW	DTW	RNAV (GPS) RWY 27 L AMDT 3	/A	FPT-INITIATED, OAPM - CLEDET
11/10/2016	KDTW	DTW	RNAV (GPS) RWY 27 R AMDT 3	/A	FPT-INITIATED, OAPM - CLEDET
11/10/2016	KDTW	DTW	RNAV (GPS) RWY 3 R AMDT 3	/A	FPT-INITIATED, OAPM - CLEDET
11/10/2016	KDTW	DTW	RNAV (GPS) RWY 4 R AMDT 4	/A	FPT-INITIATED, OAPM - CLEDET
11/10/2016	KDTW	DTW	RNAV (GPS) Y RWY 22 R ORIG	/A	FPT-INITIATED, OAPM - CLEDET
11/10/2016	KDTW	DTW	RNAV (GPS) Y RWY 4 L ORIG	/A	FPT-INITIATED, OAPM - CLEDET
11/10/2016	KDTW	DTW	RNAV (GPS) Z RWY 22 R AMDT 3	/A	FPT-INITIATED, OAPM - CLEDET
11/10/2016	KDTW	DTW	RNAV (GPS) Z RWY 4 L AMDT 3	/A	FPT-INITIATED, OAPM - CLEDET
3/2/2017	KDTW	DTW	STAR MIZAR FOUR DETROIT MI DTW	/A	ABBREV AMEND, FPT-INITIATED, MAGVA
8/17/2017	KDTW	DTW	RNAV (RNP) PRM RWY 03R ORIG	/A	FPT-INITIATED, OAPM - CLEDET
8/17/2017	KDTW	DTW	RNAV (RNP) PRM RWY 21L ORIG	/A	FPT-INITIATED, OAPM - CLEDET
8/17/2017	KDTW	DTW	RNAV (RNP) PRM RWY 22L ORIG	/A	FPT-INITIATED, OAPM - CLEDET
8/17/2017	KDTW	DTW	RNAV (RNP) PRM X RWY 03R ORIG	/A	FPT-INITIATED, OAPM - CLEDET

8/17/2017	KDTW	DTW	RNAV (RNP) PRM X RWY 03R ORIG	/A	FPT-INITIATED, OAPM - CLEDET
8/17/2017	KDTW	DTW	RNAV (RNP) PRM X RWY 04L ORIG	/A	FPT-INITIATED, OAPM - CLEDET
8/17/2017	KDTW	DTW	RNAV (RNP) PRM X RWY 21L ORIG	/A	FPT-INITIATED
8/17/2017	KDTW	DTW	RNAV (RNP) PRM X RWY 22R ORIG	/A	FPT-INITIATED, OAPM - CLEDET
8/17/2017	KDTW	DTW	RNAV (RNP) PRM Y RWY 22R ORIG	/A	FPT-INITIATED, OAPM - CLEDET
8/17/2017	KDTW	DTW	RNAV (RNP) RWY 21 L ORIG	/A	FPT-INITIATED, OAPM - CLEDET
8/17/2017	KDTW	DTW	RNAV (RNP) RWY 22 L ORIG	/A	FPT-INITIATED, OAPM - CLEDET
8/17/2017	KDTW	DTW	RNAV (RNP) X RWY 04L ORIG	/A	FPT-INITIATED
8/17/2017	KDTW	DTW	RNAV (RNP) X RWY 21 L ORIG	/A	FPT-INITIATED, OAPM - CLEDET
8/17/2017	KDTW	DTW	RNAV (RNP) X RWY 22 R ORIG	/A	FPT-INITIATED, OAPM - CLEDET
8/17/2017	KDTW	DTW	RNAV (RNP) X RWY 3R ORIG	/A	FPT-INITIATED, OAPM - CLEDET
8/17/2017	KDTW	DTW	RNAV (RNP) X RWY 4 L ORIG	/A	FPT-INITIATED, OAPM - CLEDET
8/17/2017	KDTW	DTW	RNAV (RNP) Y PRM RWY 04L ORIG	/A	FPT-INITIATED, OAPM - CLEDET
8/17/2017	KDTW	DTW	RNAV (RNP) Y RWY 22 R ORIG	/A	FPT-INITIATED
8/17/2017	KDTW	DTW	RNAV (RNP) Y RWY 4 L ORIG	/A	FPT-INITIATED, OAPM - CLEDET
8/17/2017	KDTW	DTW	RNAV (RNP) Z RWY 22 R ORIG	/A	FPT-INITIATED, OAPM - CLEDET
8/17/2017	KDTW	DTW	RNAV (RNP) Z RWY 4 L ORIG	/A	FPT-INITIATED, OAPM - CLEDET
12/7/2017	KDTW	DTW	SID AKRON FIVE DETROIT MI DTW	/A	OAPM - CLEDET
12/7/2017	KDTW	DTW	SID BARII (RNAV) ONE DETROIT MI DTW	/A	FPT-INITIATED, OAPM - CLEDET
12/7/2017	KDTW	DTW	SID CCOBB (RNAV) ONE DETROIT MI DTW	/A	FPT-INITIATED, OAPM - CLEDET
12/7/2017	KDTW	DTW	SID CLVIN (RNAV) ONE DETROIT MI DTW	/A	OAPM - CLEDET
12/7/2017	KDTW	DTW	SID ERRTH SIX DETROIT MI DTW	/A	OAPM - CLEDET
12/7/2017	KDTW	DTW	SID FORT WAYNE SEVEN DETROIT MI DTW	/A	OAPM - CLEDET
12/7/2017	KDTW	DTW	SID GGIBY (RNAV) ONE DETROIT MI DTW	/A	FPT-INITIATED, OAPM - CLEDET
12/7/2017	KDTW	DTW	SID HHOWE (RNAV) ONE DETROIT MI DTW	/A	FPT-INITIATED, OAPM - CLEDET
12/7/2017	KDTW	DTW	SID KAYLN (RNAV) ONE DETROIT MI DTW	/A	FPT-INITIATED, OAPM - CLEDET
12/7/2017	KDTW	DTW	SID LIDDS (RNAV) ONE DETROIT MI DTW	/A	FPT-INITIATED, OAPM - CLEDET
12/7/2017	KDTW	DTW	SID MIGGY (RNAV) ONE DETROIT MI DTW	/A	FPT-INITIATED, OAPM - CLEDET
12/7/2017	KDTW	DTW	SID MOONN NINE DETROIT MI DTW	/A	OAPM - CLEDET
12/7/2017	KDTW	DTW	SID PALACE EIGHT DETROIT MI DTW	/A	OAPM - CLEDET
12/7/2017	KDTW	DTW	SID PAVYL (RNAV) ONE DETROIT MI DTW	/A	FPT-INITIATED, OAPM - CLEDET
12/7/2017	KDTW	DTW	SID RICHMOND NINE DETROIT MI DTW	/A	OAPM - CLEDET
12/7/2017	KDTW	DTW	SID ROSEWOOD EIGHT DETROIT MI DTW	/A	OAPM - CLEDET
12/7/2017	KDTW	DTW	SID SNDRS (RNAV) ONE DETROIT MI KDTW	/A	FPT-INITIATED, OAPM - CLEDET
12/7/2017	KDTW	DTW	SID ST CLAIR EIGHT DETROIT MI DTW	/A	OAPM - CLEDET
12/7/2017	KDTW	DTW	SID ZETTR (RNAV) ONE DETROIT MI DTW	/A	FPT-INITIATED, OAPM - CLEDET
12/7/2017	KDTW	DTW	STAR BONZZ (RNAV) ONE DETROIT MI DTW	/A	FPT-INITIATED, OAPM - CLEDET
12/7/2017	KDTW	DTW	STAR CRAKN (RNAV) ONE DETROIT MI DTW	/A	FPT-INITIATED, OAPM - CLEDET
12/7/2017	KDTW	DTW	STAR CUUGR (RNAV) ONE DETROIT MI DTW	/A	FPT-INITIATED, OAPM - CLEDET
12/7/2017	KDTW	DTW	STAR FERRL (RNAV) ONE DETROIT MI DTW	/A	FPT-INITIATED, OAPM - CLEDET
12/7/2017	KDTW	DTW	STAR GRAYT (RNAV) ONE DETROIT MI DTW	/A	FPT-INITIATED, OAPM - CLEDET
12/7/2017	KDTW	DTW	STAR HANBL (RNAV) ONE DETROIT MI DTW	/A	FPT-INITIATED, OAPM - CLEDET
12/7/2017	KDTW	DTW	STAR HAYLL (RNAV) ONE DETROIT MI DTW	/A	FPT-INITIATED, OAPM - CLEDET
12/7/2017	KDTW	DTW	STAR HTROD (RNAV) ONE DETROIT MI DTW	/A	FPT-INITIATED, OAPM - CLEDET
12/7/2017	KDTW	DTW	STAR KKISS (RNAV) ONE DETROIT MI KDTW	/A	FPT-INITIATED, OAPM - CLEDET
12/7/2017	KDTW	DTW	STAR KLYNK (RNAV) ONE DETROIT MI KDTW	/A	FPT-INITIATED, OAPM - CLEDET
12/7/2017	KDTW	DTW	STAR LAYKS (RNAV) ONE DETROIT MI DTW	/A	FPT-INITIATED, OAPM - CLEDET
12/7/2017	KDTW	DTW	STAR LECTR (RNAV) ONE DETROIT MI DTW	/A	FPT-INITIATED, OAPM - CLEDET
12/7/2017	KDTW	DTW	STAR MIZAR FOUR DETROIT MI DTW	/A	OAPM - CLEDET
12/7/2017	KDTW	DTW	STAR POLAR FIVE DETROIT MI DTW	/A	OAPM - CLEDET
12/7/2017	KDTW	DTW	STAR RKCTY (RNAV) ONE DETROIT MI DTW	/A	FPT-INITIATED, OAPM - CLEDET
12/7/2017	KDTW	DTW	STAR SPICA TWO DETROIT MI DTW	/A	OAPM - CLEDET
12/7/2017	KDTW	DTW	STAR TPGUN (RNAV) ONE DETROIT MI DTW	/A	FPT-INITIATED, OAPM - CLEDET
12/7/2017	KDTW	DTW	STAR VCTRZ (RNAV) ONE DETROIT MI DTW	/A	FPT-INITIATED, OAPM - CLEDET
12/7/2017	KDTW	DTW	STAR WEEDA TWO DETROIT MI DTW	/A	OAPM - CLEDET
12/7/2017	KDTW	DTW	STAR WNGNT (RNAV) ONE DETROIT MI DTW	/A	FPT-INITIATED, OAPM - CLEDET

NAVAID ID / RWY	Type / Old No.	Use / New RWY/Note
ALA (CAT I)	ILS	LOC
BZB (CAT I)	ILS	LOC
DMI (CAT I)	ILS	LOC
DTW (CAT III)	ILS	LOC
DWC (CAT I)	ILS	LOC
EJR (CAT I)	ILS	LOC
EPA (CAT I)	ILS	LOC
HJT (CAT III)	ILS	LOC
HUU (CAT III)	ILS	LOC
JKI (CAT I)	ILS	LOC

FPT/IFP Teams: Report Type "MAGVAR" must be added to Task(s) impacted by MAGVAR action..

Runway Numbers are affected with the airport rotation; 03L/21R change to 04L/22R, 03R/21L change to 04R/22L, 04L/22R change to 05L/23R, 04R/22L change to 05R/23L, 09L/27R change to 10L/28R and 09R/27L change to 10R/28L; however, will not be changed per C-FPT

ASSOCIATED NAVAIDS:

I-ALA (R4L-CAT I)

I-BZB (R22R-CAT I)

I-DMI (R27R-CAT I)

I-DTW (R4R-CAT III)

I-DWC (R22L-CAT I)

I-EJR (R21L-CAT I)

I-EPA (R27L-CAT I)

I-HJT (R4L-CAT III)

I-HUU (R3R-CAT III)

I-JKI (R22R-CAT I)

AKRON (ACO) VOR/DME 4W1965 9W2020 (4.67 Out of Tolerance)

ALAINA (JZI) NDB/M (MISSED R3R)(ALT MISSED R22L) 6W1990 7W2020 (1.47 In Tolerance)

GROSSE ILE (RYS) NDB/M (MISSED R21L) 7W2010 7W2020 (0.48 In Tolerance)

CARLETON (CRL) VORTAC (ALT MISSED R21L)(MISSED R22L) (MISSED R27L) 3W1965 7W2020 (4.25 Out of Tolerance)

CHARDON (CXR) VOR/DME 5W1965 9W2020 (3.78 Out of Tolerance)

DETROIT (DXO) VOR/DME 6W1990 7W2020 (1.35 Out of Tolerance)

DUNKIRK (DKK) VORTAC 7W1965 10W2020 (3.25 Out of Tolerance)

FLAG CITY (FBC) VORTAC 2W1965 7W2020 (4.83 Out of Tolerance)

FLINT (FNT) VORTAC 6W2000 7W2020 (1.22 In Tolerance)

FORT WAYNE (FWA) VORTAC 0E1965 6W2020 (5.78 Out of Tolerance)

JAMESTOWN (JHW) VOR/DME 7W1965 10W2020 (3.28 Out of Tolerance)

JACKSON (JXN) VOR/DME 5W1985 7W2020 (1.55 In Tolerance)

KALAMAZOO (AZO) VOR/DME 1W1965 6W2020 (4.72 Out of Tolerance)

KEATING (ETG) VORTAC 10W1985 11W2020 (0.67 In Tolerance)

LITCHFIELD (LFD) VOR/DME 5W1995 6W2020 (1.28 In Tolerance)

LONDON (YXU) VOR/DME 8W1995 9W2020 9° 7' W ± 0° 22' changing by 0° 1' W per year

RICHMOND (RID) VORTAC 3W1985 6W2020 (2.83 In Tolerance)

ROSEWOOD (ROD) VORTAC 5W1995 7W2020 (1.50 In Tolerance)

PONTIAC (PSI) VORTAC (ALT MISSED R4R)(MISSED R27R)(ALT MISSED R22R) 3W1965 7W2020 (4.32 Out of Tolerance)

PULLMAN (PMM) VOR/DME 0E1965 5W2020 (5.33 Out of Tolerance)

MADDS (DE)NDB/C (MISSED R4R) 5W1980 8W2020 (2.60 In Tolerance)
SALEM (SVM) VORTAC (MISSED R4L)(MISSED R22R) 3W1965 7W2020 (4.22 Out of Tolerance)
SARNIA (ZR)NDB/M 6W1980 8W2020 (8° 19' W \pm 0° 22' changing by 0° 1' W per year)
WATERLOO (YWT) VOR/DME 8W1985 10W2020 (9° 44' W \pm 0° 23' changing by 0° 0' W per year)
WATERVILLE (VWV) VOR/DME 2W1965 7W2020 (5.00 Out of Tolerance)
WINDSOR (YQG) VOR/DME (ALT MISSED R3R) 6W1985 8W2020 (7° 45' W \pm 0° 22' changing by 0° 2' W per year)
YIPPS (YI) NDB/C (ALT MISSED R4L) 6W1995 7W2020 (1.10 In Tolerance)
DETROIT (DTWA) ASR-9 6W1995 7W2020 (1.33 Out of Tolerance)
NORTHVILLE (DTWC) ASR-9 6W1995 7W2020 (1.33 Out of Tolerance)

IF you have any questions please notify: Tony.R.Lawson@faa.gov

(405) 954-2788

TERMINAL AIRSPACE DATA REQUIREMENTS

CITY: DETROIT

STATE: MI

AIRPORT NAME: DETROIT METROPOLITAN WAYNE COUNTY

ID: KDTW

PROCEDURE: ILS Z OR LOC RWY 22R

AMDT: 4

DOCKET # : NOT REQUIRED

(96-AXX-X/Required/Not Required)

ALL DIST TO 1/100 NM; ELEV TO NEAREST FT; COORD TO 1/100 SEC; DEG TO 1/100 DG.

1. Distance from THLD to 1000' point 3.15
(Enter THLD, FAF, ARP, FACILITY, as appropriate)
2. Width of FINAL segment at 1000' point 0.90
(Enter appropriate segment , final, intermediate, etc.)
3. True Course of FINAL segment containing 1000' point 208.69
4. High Terrain in FINAL segment containing 1000' point 679
5. Distance from THLD to 1500' point 5.63
(If 1500' point in PT maneuvering area or holding pattern note in remarks)
6. Width of INTERMEDIATE segment at 1500' point 4.49
7. True Course of INTERMEDIATE segment containing 1500' point 208.69
8. High Terrain in INTERMEDIATE segment containing 1500' point 693
9. Threshold Coordinates (if straight-in) ... 421334.48N / 0832158.61W
10. ARP Coordinates 421244.70N / 0832112.20W
11. Runway Approach End and distance furthest from ARP.....RWY R04L
Distance 1.50 NM
12. FAF Coordinates 421709.86N / 0831919.85W
(Click to Select)

REMARKS:

APPROACH/DRAWING ATTACHED.