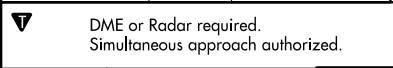


Flight Procedure Tracking Form		Action: FLIGHT CHECK	Task Type: IAP	Date Open: 02/17/2016	Task #: 2015060927130704005	Request #: 20150609271307
Procedure: ILS Y RWY 22R AMDT 1			Airport ID: KDTW	Airport: DETROIT METROPOLITAN WAYNE COUNTY		Reimbursable #: NO
City: DETROIT	ST: MI	GPS #:	Estimated Chart Date: 11/10/2016		FICO #:	
Fac ID: BZB		Fac. Type: ILS			Specialist: JEFFREY ROBINSON	
Procedure Review						
	Rec'd	Rel'd	Full Name	Comments		
Lead:	05/02/2016					
QA:						
Liaison:						
Procedure Comments: ENROUTE-NON Remark Type: INFORMATION ASSIGNED MAG VAR, KDTW: OLD 6W-NEW 7W. I-BZB: OLD 6W-NEW 7W. ESVS: 11 -- DETROIT (BZB) LOC (3), DETROIT (BZB) DME (3), DETROIT (BZB) GS (5). CONTACT: TONY LAWSON / JACOB POWERS, 405-954-2788 / 8702.						

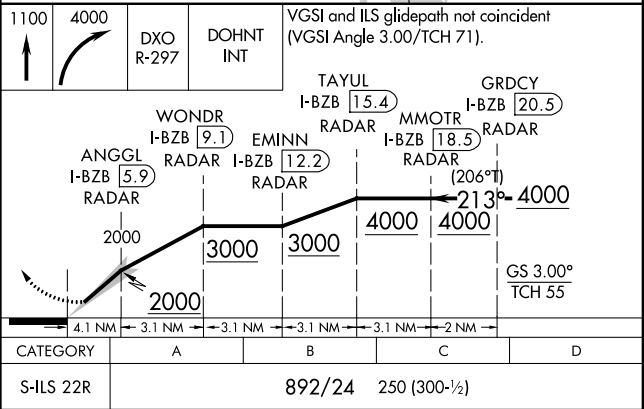
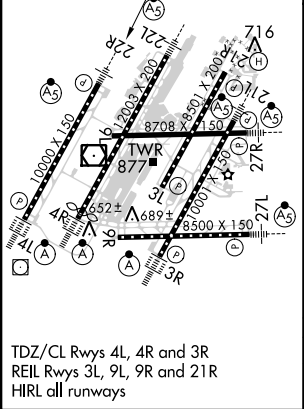
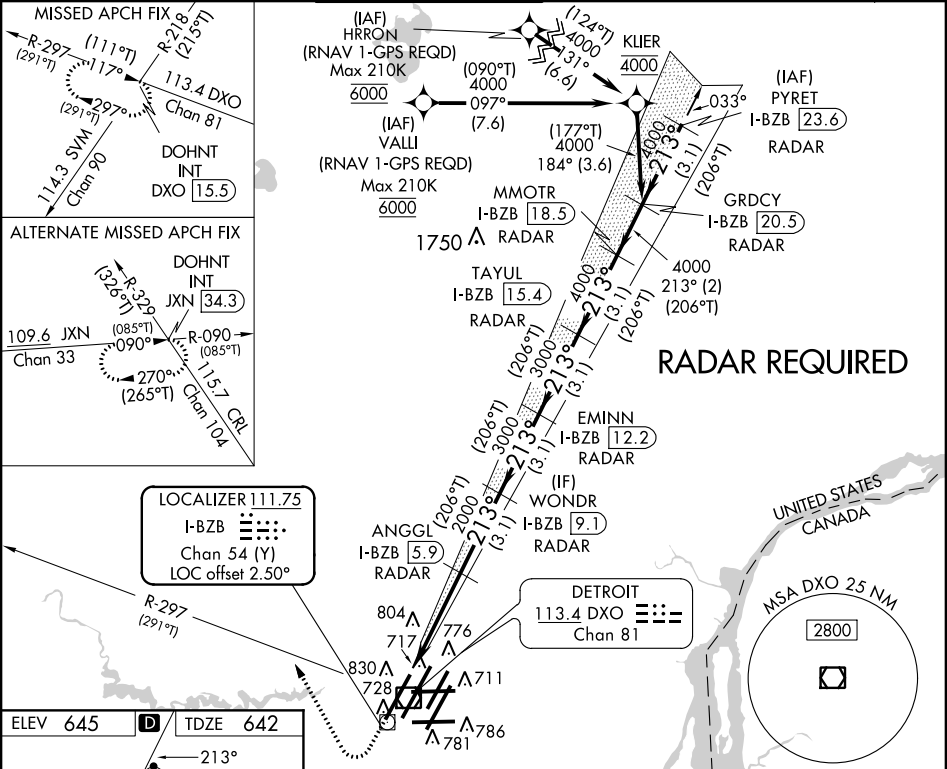
QUALITY
15
CHECKED

LOC/DME I-BZB	APP CRS	Rwy Idg	10000
111.75	213°	TDZE	642
Chan 54 (Y)		Apt Elev	645

ILS Y RWY 22R
DETROIT METROPOLITAN WAYNE COUNTY (DTW)

		MISSED APPROACH: Climb to 1100 then climbing right turn to 4000 on DXO VOR/DME R-297 to DOHNT INT/DXO 15.5 DME and hold.	
--	---	--	--

ATIS 133.675	DETROIT APP CON 124.05 363.2 (WEST) 125.15 363.2 (EAST)	METRO TOWER 135.0 317.725 (WEST) 118.4 317.725 (EAST)	GND CON 121.8 (NW) 119.45 (NE) 132.72 (SW) 119.25 (SE)	CLNC DEL 120.65	CPDLC
-----------------	---	---	--	--------------------	-------



OLD

DETROIT, MICHIGAN

AL-119 (FAA)

16035

LOC/DME I-BZB 111.75 Chan 54 (Y)	APP CRS 212°	Rwy Idg TDZE Apt Elev 10000 642 645
--	------------------------	---

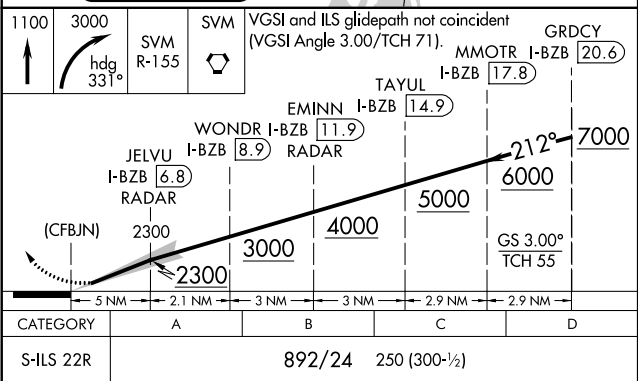
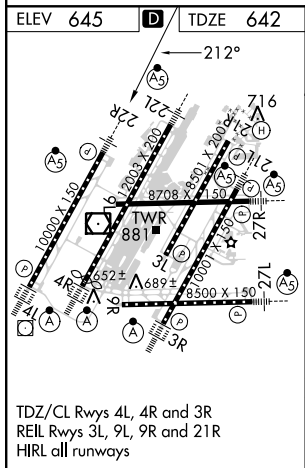
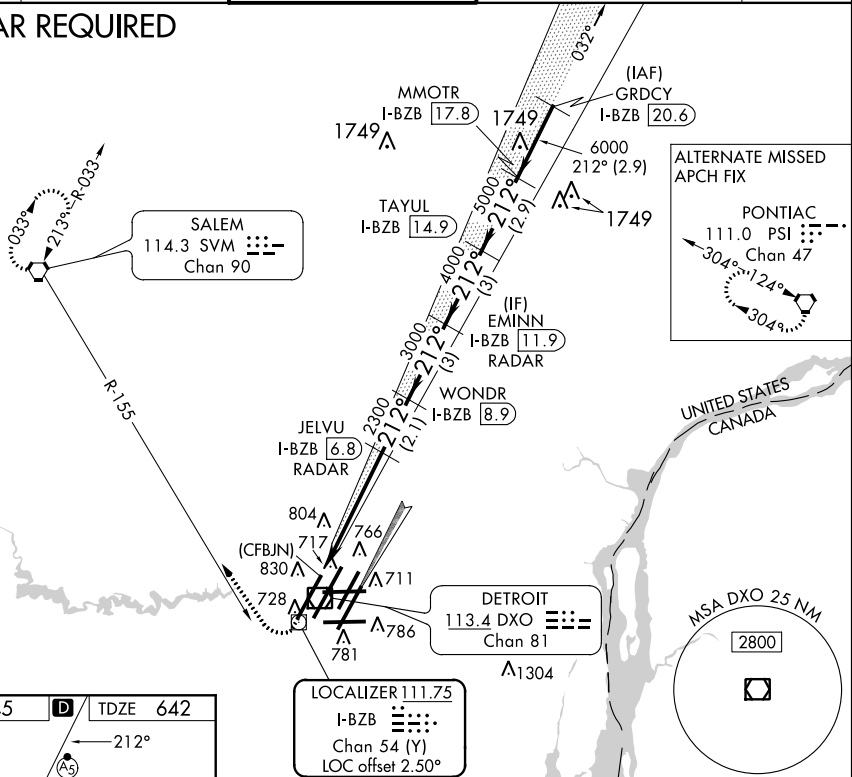
ILS Y RWY 22R

DETROIT METROPOLITAN WAYNE COUNTY (DTW)

Simultaneous approach authorized with Rwy 21L. DME or Radar required. Procedure NA when glideslope not available.	MALSR	MISSED APPROACH: Climb to 1100 then climbing right turn to 3000 on heading 331° and SVM VORTAC R-155 direct SVM VORTAC and hold.
---	-------	--

ATIS 133.675	DETROIT APP CON 124.05 363.2 (WEST) 125.15 363.2 (EAST)	METRO TOWER 135.0 317.725 (WEST) 118.4 317.725 (EAST)	GND CON 121.8 (NW) 119.45 (NE) 132.72 (SW) 119.25 (SE)	CLNC DEL 120.65
------------------------	---	---	--	---------------------------

RADAR REQUIRED



DETROIT, MICHIGAN

Orig-C 11DEC14

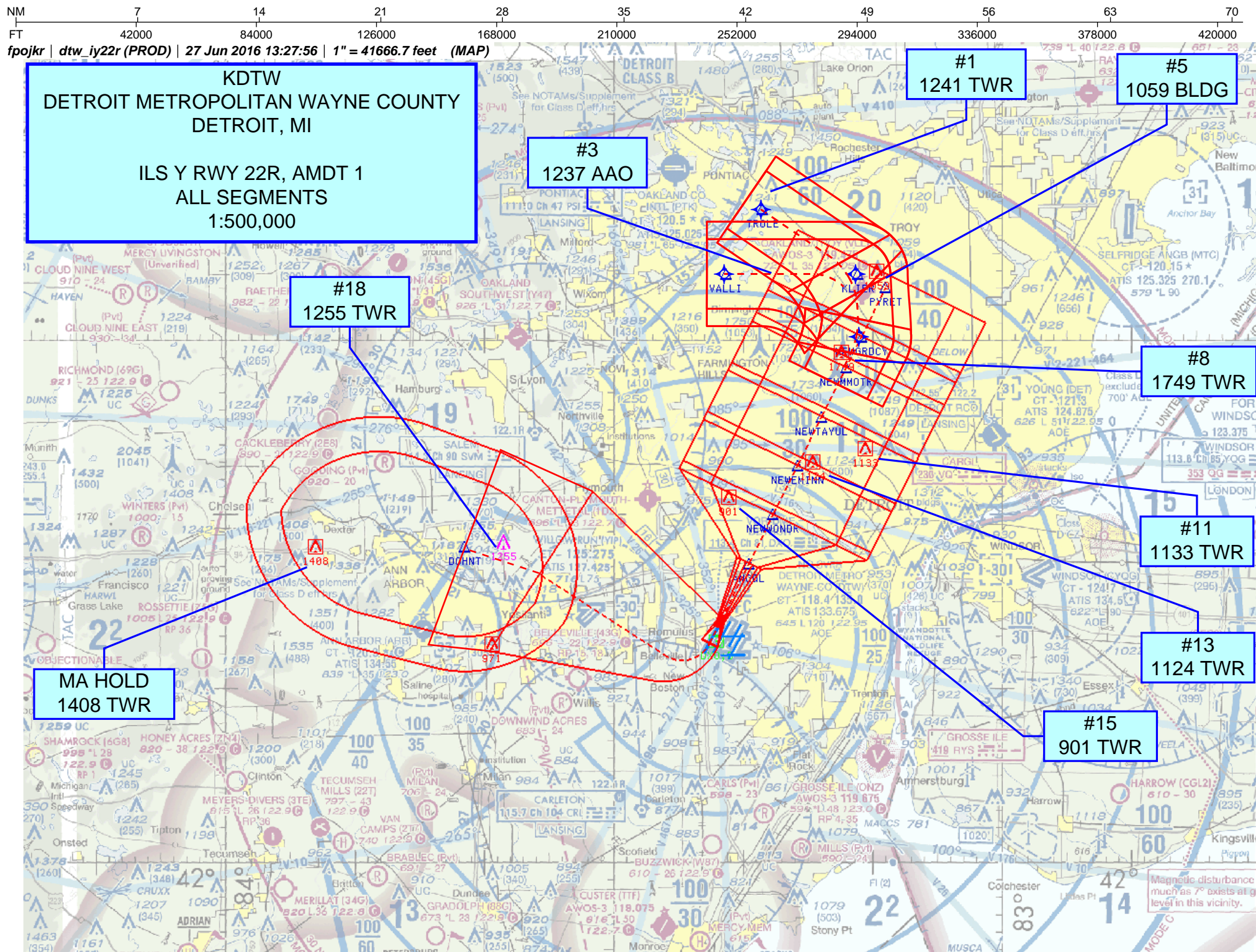
DETROIT METROPOLITAN WAYNE COUNTY (DTW)

42°13'N-83°21'W

ILS Y RWY 22R

EC-1, 28 APR 2016 to 26 MAY 2016

EC-1, 28 APR 2016 to 26 MAY 2016

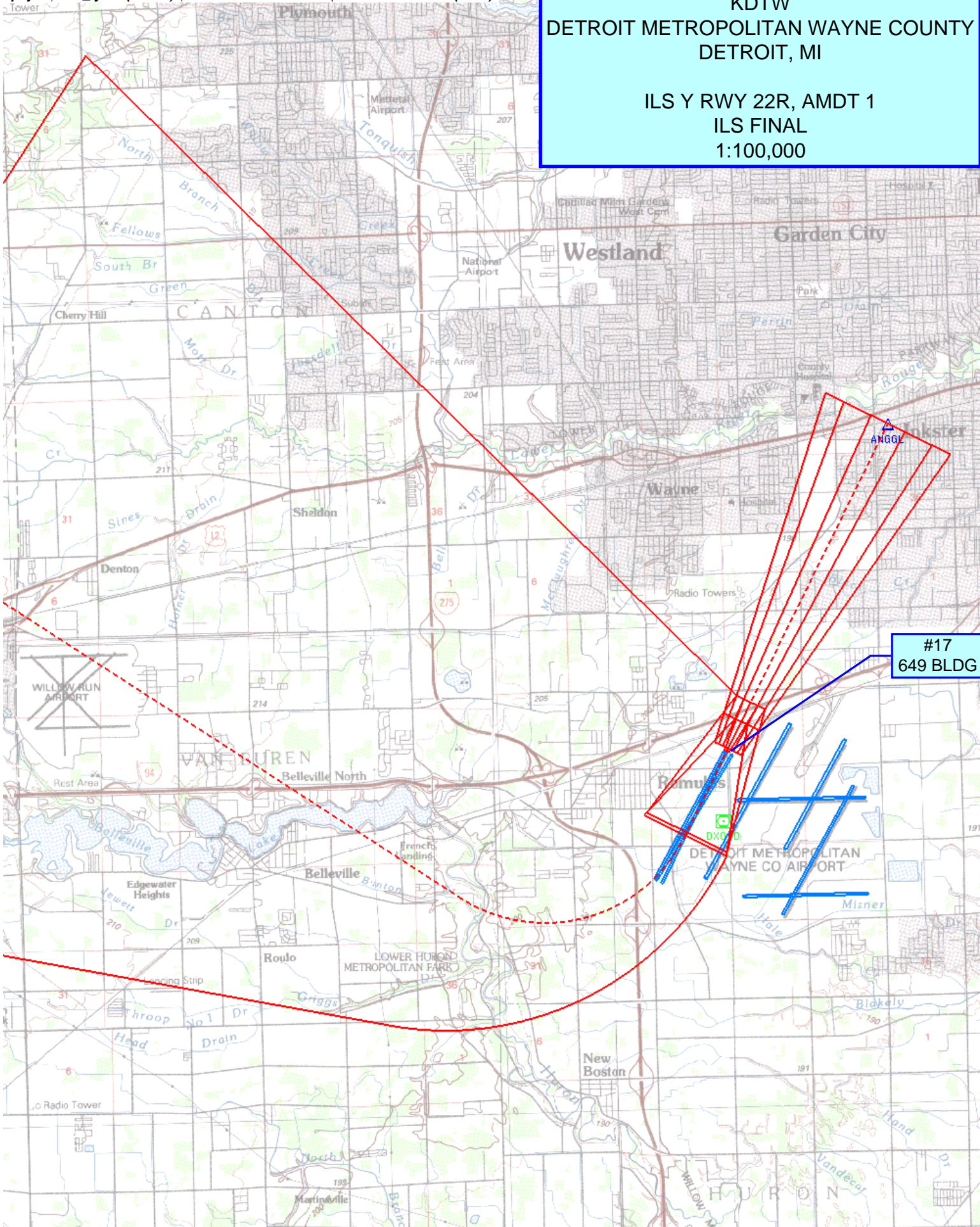


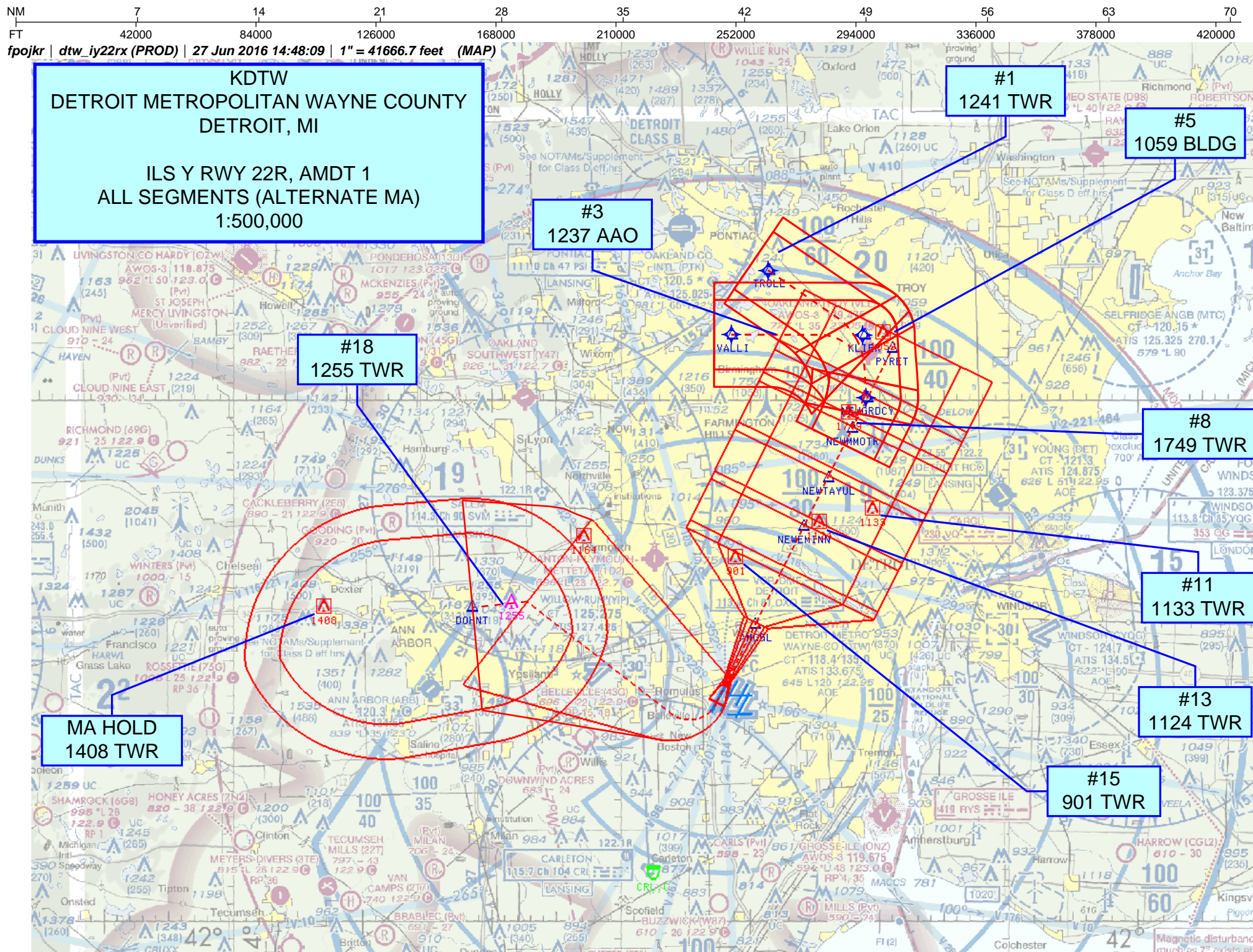
NM 1 2 3 4 5 6 7 8 9 10
FT 8000 16000 24000 32000 40000 48000 56000 64000

fpojkr | dtw_iy22r (PROD) | 27 Jun 2016 13:33:48 | 1" = 8333.3 feet (MAP)

KDTW
DETROIT METROPOLITAN WAYNE COUNTY
DETROIT, MI

ILS Y RWY 22R, AMDT 1
ILS FINAL
1:100,000



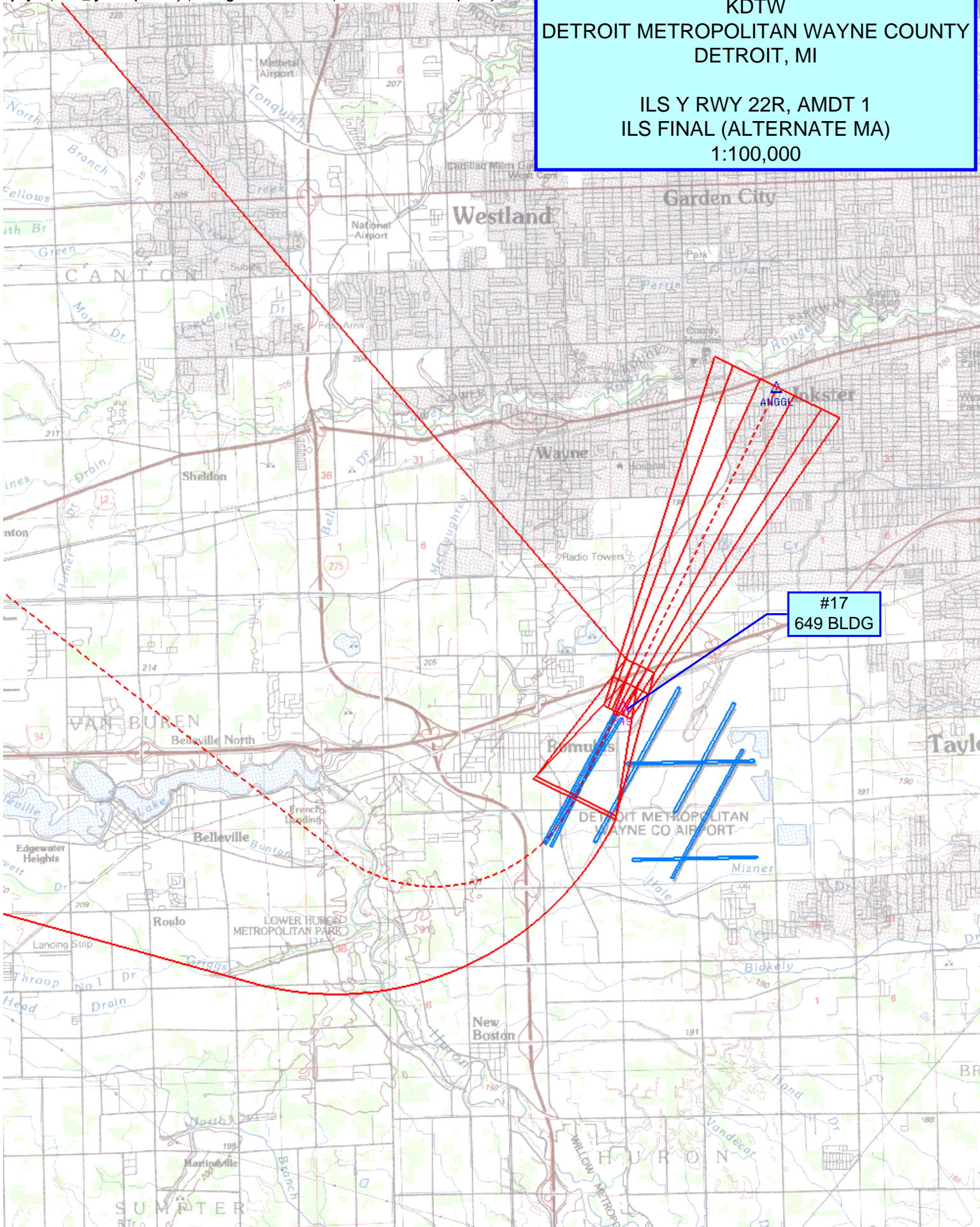


NM 1 2 3 4 5 6 7 8 9 10
FT 8000 16000 24000 32000 40000 48000 56000 64000

fpojkr | dtw_iy22rx (PROD) | 4 Aug 2016 14:43:42 | 1" = 8333.3 feet (MAP)

KDTW
DETROIT METROPOLITAN WAYNE COUNTY
DETROIT, MI

ILS Y RWY 22R, AMDT 1
ILS FINAL (ALTERNATE MA)
1:100,000



TERMINAL AIRSPACE DATA REQUIREMENTS

CITY:

STATE:

AIRPORT NAME:

ID:

PROCEDURE:

AMDT:

DOCKET # :

(96-AXX-X/Required/Not Required)

ALL DIST TO 1/100 NM; ELEV TO NEAREST FT; COORD TO 1/100 SEC; DEG TO 1/100 DG.

1. Distance from _____ to 1000' point _____

(Enter THLD, FAF, ARP, FACILITY, as appropriate)

2. Width of _____ segment at 1000' point _____

(Enter appropriate segment , final, intermediate, etc.)

3. True Course of _____ segment containing 1000' point _____

4. High Terrain in _____ segment containing 1000' point _____

5. Distance from _____ to 1500' point _____

(If 1500' point in PT maneuvering area or holding pattern note in remarks)

6. Width of _____ segment at 1500' point _____

7. True Course of _____ segment containing 1500' point _____

8. High Terrain in _____ segment containing 1500' point _____

9. Threshold Coordinates (if straight-in) ... _____ / _____

10. ARP Coordinates _____ / _____

11. Runway Approach End and distance furthest from ARP.....RWY _____

Distance _____ NM

12. FAF Coordinates _____ / _____

(Click to Select)

REMARKS:

ESV Details

Originating Office :		Airspace Docket Number :		Request Type : Establish		
Facility Data						
Chart Name : EMINN, IY22R, DTW		City : DETROIT METRO WAYNE CNTY		Ident : BZB		State : MI
Type/Class : GS		Frequency : M333.35		Reference No.: 16062335		
Expanded Service Volume Data: (Requesting Officer)						
ESV ID	Radial 1	Radial 2	Distance	Minimum Altitude	Maximum Altitude	
FAA 081224-004	32	0	11	30	51	
Requirement: EMINN, IY22R, DTW						
Signature: Robinson Jeffrey		Routing Symbol: AJV-5421			Date: 06/27/2016	
Expanded Service Volume Data: (FMO)						
ESV ID	Radial 1	Radial 2	Distance	Minimum Altitude	Maximum Altitude	Action Type
FAA 081224-004	32	0	11	30	51	APPROVE
Requirement/Remarks: EMINN, IY22R, DTWAPPROVED. FREQ. PROTECTION & FIELD STRENGTH. PENDING FLIGHT INSPECT @ REQUIRED. DIST. & MIN ALT.						
Signature: Le Quang		Routing Symbol:			Date: 06/27/2016	
Expanded Service Volume Data: (Super FMO)						
ESV ID	Radial 1	Radial 2	Distance	Minimum Altitude	Maximum Altitude	Action Type
FAA 081224-004	32	0	11	30	51	APPROVE
Requirement/Remarks: EMINN, IY22R, DTWAPPROVED. FREQ. PROTECTION & FIELD STRENGTH. PENDING FLIGHT INSPECT @ REQUIRED. DIST. & MIN ALT.						
Signature: Hughes Dennis		Routing Symbol:			Date: 06/28/2016	
Expanded Service Volume Data: (FIFO)						
ESV ID	Radial 1	Radial 2	Distance	Minimum Altitude	Maximum Altitude	Action Type
FAA 081224-004	32	0				
Requirement/Remarks:						
Signature:		Routing Symbol:			Date:	

ESV Details

Originating Office :		Airspace Docket Number :		Request Type : Establish		
Facility Data						
Chart Name : TAYUL, IY22R, DTW		City : DETROIT METRO WAYNE CNTY		Ident : BZB		State : MI
Type/Class : GS		Frequency : M333.35		Reference No.: 16062336		
Expanded Service Volume Data: (Requesting Officer)						
ESV ID	Radial 1	Radial 2	Distance	Minimum Altitude	Maximum Altitude	
FAA 081224-005	32	0	14	40	51	
Requirement: TAYUL, IY22R, DTW						
Signature: Robinson Jeffrey		Routing Symbol: AJV-5421				Date: 06/27/2016
Expanded Service Volume Data: (FMO)						
ESV ID	Radial 1	Radial 2	Distance	Minimum Altitude	Maximum Altitude	Action Type
FAA 081224-005	32	0	14	40	51	APPROVE
Requirement/Remarks: TAYUL, IY22R, DTWAPPROVED. FREQ. PROTECTION & FIELD STRENGTH. PENDING FLIGHT INSPECT @ REQUIRED. DIST. & MIN ALT.						
Signature: Le Quang		Routing Symbol:			Date: 06/27/2016	
Expanded Service Volume Data: (Super FMO)						
ESV ID	Radial 1	Radial 2	Distance	Minimum Altitude	Maximum Altitude	Action Type
FAA 081224-005	32	0	14	40	51	APPROVE
Requirement/Remarks: TAYUL, IY22R, DTWAPPROVED. FREQ. PROTECTION & FIELD STRENGTH. PENDING FLIGHT INSPECT @ REQUIRED. DIST. & MIN ALT.						
Signature: Hughes Dennis		Routing Symbol:			Date: 06/28/2016	
Expanded Service Volume Data: (FIFO)						
ESV ID	Radial 1	Radial 2	Distance	Minimum Altitude	Maximum Altitude	Action Type
FAA 081224-005	32	0				
Requirement/Remarks:						
Signature:		Routing Symbol:			Date:	

ESV Details

Originating Office :		Airspace Docket Number :		Request Type : Establish		
Facility Data						
Chart Name : MMOTR, IY22R, DTW		City : DETROIT METRO WAYNE CO		Ident : BZB		State : MI
Type/Class : LOC		Frequency : M111.75		Reference No.: 16062338		
Expanded Service Volume Data: (Requesting Officer)						
ESV ID	Radial 1	Radial 2	Distance	Minimum Altitude	Maximum Altitude	
FAA 081220-008	32	0	19	40	60	
Requirement: MMOTR, IY22R, DTW						
Signature: Robinson Jeffrey		Routing Symbol: AJV-5421			Date: 06/27/2016	
Expanded Service Volume Data: (FMO)						
ESV ID	Radial 1	Radial 2	Distance	Minimum Altitude	Maximum Altitude	Action Type
FAA 081220-008	32	0	19	40	60	APPROVE
Requirement/Remarks: MMOTR, IY22R, DTWAPPROVED. FREQ. PROTECTION & FIELD STRENGTH. PENDING FLIGHT INSPECT @ REQUIRED. DIST. & MIN ALT.						
Signature: Le Quang		Routing Symbol:			Date: 06/27/2016	
Expanded Service Volume Data: (Super FMO)						
ESV ID	Radial 1	Radial 2	Distance	Minimum Altitude	Maximum Altitude	Action Type
FAA 081220-008	32	0	19	40	60	APPROVE
Requirement/Remarks: MMOTR, IY22R, DTWAPPROVED. FREQ. PROTECTION & FIELD STRENGTH. PENDING FLIGHT INSPECT @ REQUIRED. DIST. & MIN ALT.						
Signature: Hughes Dennis		Routing Symbol:			Date: 06/28/2016	
Expanded Service Volume Data: (FIFO)						
ESV ID	Radial 1	Radial 2	Distance	Minimum Altitude	Maximum Altitude	Action Type
FAA 081220-008	32	0				
Requirement/Remarks:						
Signature:		Routing Symbol:			Date:	

ESV Details

Originating Office :		Airspace Docket Number :		Request Type : Establish		
Facility Data						
Chart Name : MMOTR, IY22R, KDTW		City : DETROIT METRO WAYNE CO		Ident : BZB		State : MI
Type/Class : DME		Frequency : M1141		Reference No.: 16082655		
Expanded Service Volume Data: (Requesting Officer)						
ESV ID	Radial 1	Radial 2	Distance	Minimum Altitude	Maximum Altitude	
FAA 081221-025	32	0	19	40	60	
Requirement: MMOTR, IY22R, KDTW						
Signature: Robinson Jeffrey		Routing Symbol: AJV-5421				Date: 08/05/2016
Expanded Service Volume Data: (FMO)						
ESV ID	Radial 1	Radial 2	Distance	Minimum Altitude	Maximum Altitude	Action Type
FAA 081221-025	32	0	19	40	60	APPROVE
Requirement/Remarks: MMOTR, IY22R, KDTWAPPROVED. FREQ. PROTECTION & FIELD STRENGTH. PENDING FLIGHT INSPECT @ REQUIRED. DIST. & MIN ALT.						
Signature: Hughes Dennis		Routing Symbol:			Date: 08/11/2016	
Expanded Service Volume Data: (Super FMO)						
ESV ID	Radial 1	Radial 2	Distance	Minimum Altitude	Maximum Altitude	Action Type
FAA 081221-025	32	0	19	40	60	APPROVE
Requirement/Remarks: MMOTR, IY22R, KDTWAPPROVED. FREQ. PROTECTION & FIELD STRENGTH. PENDING FLIGHT INSPECT @ REQUIRED. DIST. & MIN ALT.						
Signature: Hughes Dennis		Routing Symbol:			Date: 08/11/2016	
Expanded Service Volume Data: (FIFO)						
ESV ID	Radial 1	Radial 2	Distance	Minimum Altitude	Maximum Altitude	Action Type
FAA 081221-025	32	0				
Requirement/Remarks:						
Signature:		Routing Symbol:			Date:	

ESV Details

Originating Office :		Airspace Docket Number :		Request Type : Establish		
Facility Data						
Chart Name : MMOTR, IY22R, DTW		City : DETROIT METRO WAYNE CNTY		Ident : BZB		State : MI
Type/Class : GS		Frequency : M333.35		Reference No.: 16062337		
Expanded Service Volume Data: (Requesting Officer)						
ESV ID	Radial 1	Radial 2	Distance	Minimum Altitude	Maximum Altitude	
FAA 081224-006	32	0	17	40	60	
Requirement: MMOTR, IY22R, DTW						
Signature: Robinson Jeffrey		Routing Symbol: AJV-5421			Date: 06/27/2016	
Expanded Service Volume Data: (FMO)						
ESV ID	Radial 1	Radial 2	Distance	Minimum Altitude	Maximum Altitude	Action Type
FAA 081224-006	32	0	17	40	60	APPROVE
Requirement/Remarks: MMOTR, IY22R, DTWAPPROVED. FREQ. PROTECTION & FIELD STRENGTH. PENDING FLIGHT INSPECT @ REQUIRED. DIST. & MIN ALT.						
Signature: Le Quang		Routing Symbol:			Date: 06/27/2016	
Expanded Service Volume Data: (Super FMO)						
ESV ID	Radial 1	Radial 2	Distance	Minimum Altitude	Maximum Altitude	Action Type
FAA 081224-006	32	0	17	40	60	APPROVE
Requirement/Remarks: MMOTR, IY22R, DTWAPPROVED. FREQ. PROTECTION & FIELD STRENGTH. PENDING FLIGHT INSPECT @ REQUIRED. DIST. & MIN ALT.						
Signature: Hughes Dennis		Routing Symbol:			Date: 06/28/2016	
Expanded Service Volume Data: (FIFO)						
ESV ID	Radial 1	Radial 2	Distance	Minimum Altitude	Maximum Altitude	Action Type
FAA 081224-006	32	0				
Requirement/Remarks:						
Signature:		Routing Symbol:			Date:	

ESV Details

Originating Office :		Airspace Docket Number :		Request Type : Establish		
Facility Data						
Chart Name : GRDCY, IY22R, DTW		City : DETROIT METRO WAYNE CO		Ident : BZB State : MI		
Type/Class : LOC		Frequency : M111.75		Reference No.: 16062339		
Expanded Service Volume Data: (Requesting Officer)						
ESV ID	Radial 1	Radial 2	Distance	Minimum Altitude	Maximum Altitude	
FAA 081220-009	32	0	21	40	70	
Requirement: GRDCY, IY22R, DTW						
Signature: Robinson Jeffrey		Routing Symbol: AJV-5421			Date: 06/27/2016	
Expanded Service Volume Data: (FMO)						
ESV ID	Radial 1	Radial 2	Distance	Minimum Altitude	Maximum Altitude	Action Type
FAA 081220-009	32	0	21	40	70	APPROVE
Requirement/Remarks: GRDCY, IY22R, DTWAPPROVED. FREQ. PROTECTION & FIELD STRENGTH. PENDING FLIGHT INSPECT @ REQUIRED. DIST. & MIN ALT.						
Signature: Le Quang		Routing Symbol:			Date: 06/27/2016	
Expanded Service Volume Data: (Super FMO)						
ESV ID	Radial 1	Radial 2	Distance	Minimum Altitude	Maximum Altitude	Action Type
FAA 081220-009	32	0	21	40	70	APPROVE
Requirement/Remarks: GRDCY, IY22R, DTWAPPROVED. FREQ. PROTECTION & FIELD STRENGTH. PENDING FLIGHT INSPECT @ REQUIRED. DIST. & MIN ALT.						
Signature: Hughes Dennis		Routing Symbol:			Date: 06/28/2016	
Expanded Service Volume Data: (FIFO)						
ESV ID	Radial 1	Radial 2	Distance	Minimum Altitude	Maximum Altitude	Action Type
FAA 081220-009	32	0				
Requirement/Remarks:						
Signature:		Routing Symbol:			Date:	

ESV Details

Originating Office :		Airspace Docket Number :		Request Type : Establish		
Facility Data						
Chart Name : GRDCY, IY22R, KDTW		City : DETROIT METRO WAYNE CO		Ident : BZB		State : MI
Type/Class : DME		Frequency : M1141		Reference No.: 16082656		
Expanded Service Volume Data: (Requesting Officer)						
ESV ID	Radial 1	Radial 2	Distance	Minimum Altitude	Maximum Altitude	
FAA 081221-026	32	0	21	40	70	
Requirement: GRDCY, IY22R, KDTW						
Signature: Robinson Jeffrey		Routing Symbol: AJV-5421				Date: 08/05/2016
Expanded Service Volume Data: (FMO)						
ESV ID	Radial 1	Radial 2	Distance	Minimum Altitude	Maximum Altitude	Action Type
FAA 081221-026	32	0	21	40	70	APPROVE
Requirement/Remarks: GRDCY, IY22R, KDTWAPPROVED. FREQ. PROTECTION & FIELD STRENGTH. PENDING FLIGHT INSPECT @ REQUIRED. DIST. & MIN ALT.						
Signature: Hughes Dennis		Routing Symbol:			Date: 08/11/2016	
Expanded Service Volume Data: (Super FMO)						
ESV ID	Radial 1	Radial 2	Distance	Minimum Altitude	Maximum Altitude	Action Type
FAA 081221-026	32	0	21	40	70	APPROVE
Requirement/Remarks: GRDCY, IY22R, KDTWAPPROVED. FREQ. PROTECTION & FIELD STRENGTH. PENDING FLIGHT INSPECT @ REQUIRED. DIST. & MIN ALT.						
Signature: Hughes Dennis		Routing Symbol:			Date: 08/11/2016	
Expanded Service Volume Data: (FIFO)						
ESV ID	Radial 1	Radial 2	Distance	Minimum Altitude	Maximum Altitude	Action Type
FAA 081221-026	32	0				
Requirement/Remarks:						
Signature:		Routing Symbol:			Date:	

ESV Details

Originating Office :		Airspace Docket Number :		Request Type : Establish		
Facility Data						
Chart Name : GRDCY, IY22R, DTW		City : DETROIT METRO WAYNE CNTY		Ident : BZB		State : MI
Type/Class : GS		Frequency : M333.35		Reference No.: 16062340		
Expanded Service Volume Data: (Requesting Officer)						
ESV ID	Radial 1	Radial 2	Distance	Minimum Altitude	Maximum Altitude	
FAA 081224-007	32	0	19	40	70	
Requirement: GRDCY, IY22R, DTW						
Signature: Robinson Jeffrey		Routing Symbol: AJV-5421			Date: 06/27/2016	
Expanded Service Volume Data: (FMO)						
ESV ID	Radial 1	Radial 2	Distance	Minimum Altitude	Maximum Altitude	Action Type
FAA 081224-007	32	0	19	40	70	APPROVE
Requirement/Remarks: GRDCY, IY22R, DTWAPPROVED. FREQ. PROTECTION & FIELD STRENGTH. PENDING FLIGHT INSPECT @ REQUIRED. DIST. & MIN ALT.						
Signature: Le Quang		Routing Symbol:			Date: 06/27/2016	
Expanded Service Volume Data: (Super FMO)						
ESV ID	Radial 1	Radial 2	Distance	Minimum Altitude	Maximum Altitude	Action Type
FAA 081224-007	32	0	19	40	70	APPROVE
Requirement/Remarks: GRDCY, IY22R, DTWAPPROVED. FREQ. PROTECTION & FIELD STRENGTH. PENDING FLIGHT INSPECT @ REQUIRED. DIST. & MIN ALT.						
Signature: Hughes Dennis		Routing Symbol:			Date: 06/28/2016	
Expanded Service Volume Data: (FIFO)						
ESV ID	Radial 1	Radial 2	Distance	Minimum Altitude	Maximum Altitude	Action Type
FAA 081224-007	32	0				
Requirement/Remarks:						
Signature:		Routing Symbol:			Date:	

ESV Details

Originating Office :		Airspace Docket Number :		Request Type : Establish		
Facility Data						
Chart Name : PYRET, IY22R, DTW		City : DETROIT METRO WAYNE CO		Ident : BZB		State : MI
Type/Class : LOC		Frequency : M111.75		Reference No.: 16062341		
Expanded Service Volume Data: (Requesting Officer)						
ESV ID	Radial 1	Radial 2	Distance	Minimum Altitude	Maximum Altitude	
FAA 081220-010	32	0	24	40	80	
Requirement: PYRET, IY22R, DTW						
Signature: Robinson Jeffrey			Routing Symbol: AJV-5421			Date: 06/27/2016
Expanded Service Volume Data: (FMO)						
ESV ID	Radial 1	Radial 2	Distance	Minimum Altitude	Maximum Altitude	Action Type
FAA 081220-010	32	0	24	40	80	APPROVE
Requirement/Remarks: PYRET, IY22R, DTWAPPROVED. FREQ. PROTECTION & FIELD STRENGTH. PENDING FLIGHT INSPECT @ REQUIRED. DIST. & MIN ALT.						
Signature: Le Quang			Routing Symbol:		Date: 06/27/2016	
Expanded Service Volume Data: (Super FMO)						
ESV ID	Radial 1	Radial 2	Distance	Minimum Altitude	Maximum Altitude	Action Type
FAA 081220-010	32	0	24	40	80	APPROVE
Requirement/Remarks: PYRET, IY22R, DTWAPPROVED. FREQ. PROTECTION & FIELD STRENGTH. PENDING FLIGHT INSPECT @ REQUIRED. DIST. & MIN ALT.						
Signature: Hughes Dennis			Routing Symbol:		Date: 06/28/2016	
Expanded Service Volume Data: (FIFO)						
ESV ID	Radial 1	Radial 2	Distance	Minimum Altitude	Maximum Altitude	Action Type
FAA 081220-010	32	0				
Requirement/Remarks:						
Signature:			Routing Symbol:		Date:	

ESV Details

Originating Office :		Airspace Docket Number :		Request Type : Establish		
Facility Data						
Chart Name : PYRET, IY22R, KDTW		City : DETROIT METRO WAYNE CO		Ident : BZB State : MI		
Type/Class : DME		Frequency : M1141		Reference No.: 16082657		
Expanded Service Volume Data: (Requesting Officer)						
ESV ID	Radial 1	Radial 2	Distance	Minimum Altitude	Maximum Altitude	
FAA 081221-027	32	0	24	40	80	
Requirement: PYRET, IY22R, KDTW						
Signature: Robinson Jeffrey		Routing Symbol: AJV-5421			Date: 08/05/2016	
Expanded Service Volume Data: (FMO)						
ESV ID	Radial 1	Radial 2	Distance	Minimum Altitude	Maximum Altitude	Action Type
FAA 081221-027	32	0	24	40	80	APPROVE
Requirement/Remarks: PYRET, IY22R, KDTWAPPROVED. FREQ. PROTECTION & FIELD STRENGTH. PENDING FLIGHT INSPECT @ REQUIRED. DIST. & MIN ALT.						
Signature: Hughes Dennis		Routing Symbol:			Date: 08/11/2016	
Expanded Service Volume Data: (Super FMO)						
ESV ID	Radial 1	Radial 2	Distance	Minimum Altitude	Maximum Altitude	Action Type
FAA 081221-027	32	0	24	40	80	APPROVE
Requirement/Remarks: PYRET, IY22R, KDTWAPPROVED. FREQ. PROTECTION & FIELD STRENGTH. PENDING FLIGHT INSPECT @ REQUIRED. DIST. & MIN ALT.						
Signature: Hughes Dennis		Routing Symbol:			Date: 08/11/2016	
Expanded Service Volume Data: (FIFO)						
ESV ID	Radial 1	Radial 2	Distance	Minimum Altitude	Maximum Altitude	Action Type
FAA 081221-027	32	0				
Requirement/Remarks:						
Signature:		Routing Symbol:			Date:	

ESV Details

Originating Office :		Airspace Docket Number :		Request Type : Establish		
Facility Data						
Chart Name : PYRET, IY22R, DTW		City : DETROIT METRO WAYNE CNTY		Ident : BZB		State : MI
Type/Class : GS		Frequency : M333.35		Reference No.: 16062342		
Expanded Service Volume Data: (Requesting Officer)						
ESV ID	Radial 1	Radial 2	Distance	Minimum Altitude	Maximum Altitude	
FAA 081224-008	32	0	22	40	80	
Requirement: PYRET, IY22R, DTW						
Signature: Robinson Jeffrey			Routing Symbol: AJV-5421			Date: 06/27/2016
Expanded Service Volume Data: (FMO)						
ESV ID	Radial 1	Radial 2	Distance	Minimum Altitude	Maximum Altitude	Action Type
FAA 081224-008	32	0	22	40	80	APPROVE
Requirement/Remarks: PYRET, IY22R, DTWAPPROVED. FREQ. PROTECTION & FIELD STRENGTH. PENDING FLIGHT INSPECT @ REQUIRED. DIST. & MIN ALT.						
Signature: Le Quang			Routing Symbol:		Date: 06/27/2016	
Expanded Service Volume Data: (Super FMO)						
ESV ID	Radial 1	Radial 2	Distance	Minimum Altitude	Maximum Altitude	Action Type
FAA 081224-008	32	0	22	66	80	RESTRICT
Requirement/Remarks: PYRET, IY22R, DTWRESTRICTED. FIELD STRENGTH TOO LOW. MIN. ALT FL=6600 FEET.						
Signature: Hughes Dennis			Routing Symbol:		Date: 06/28/2016	
Expanded Service Volume Data: (Super FMO)						
ESV ID	Radial 1	Radial 2	Distance	Minimum Altitude	Maximum Altitude	Action Type
FAA 081224-008	32	0	22	66	80	RESTRICT
Requirement/Remarks: PYRET, IY22R, DTWRESTRICTED. FIELD STRENGTH TOO LOW. MIN. ALT FL=6600 FEET.						
Signature: Hughes Dennis			Routing Symbol:		Date: 06/28/2016	
Expanded Service Volume Data: (FIFO)						
ESV ID	Radial 1	Radial 2	Distance	Minimum Altitude	Maximum Altitude	Action Type
FAA 081224-008	32	0				
Requirement/Remarks:						
Signature:			Routing Symbol:		Date:	



Federal Aviation Administration

Initial Development Notification for AIRNAV Pending Records

To: Janet Myers, National Flight Data Center, Sub Team B, AJV-5332

From: Jose Alfonso, Manager IFP Coordination Team, AJV-531

Subject: **ACTION:** Request for Pending Records **KDTW_DTW__DETROIT METROPOLITAN WAYNE COUNTY, DETROIT, MI US**

The Magnetic Variation (MV) data for the airport(s) and/or facility(s) listed will be revised effective concurrent with the publication of the procedure(s) listed below. Estimated Chart Date: 11/10/2016

Old Magnetic Variance (MV) W 6 1990 New MV W 7 2020

ECD	Airport ID		Procedure Name	AMDT #	Task Report Type Selections
6/23/2016	KDTW	DTW	RNAV (GPS) RWY 27 L AMDT 2A	/A	P-NOTAM
9/15/2016	KDTW	DTW	SID PALACE NINE DETROIT MI KDTW	/A	ENROUTE, FPT-INITIATED
9/15/2016	KDTW	DTW	SID ST CLAIR NINE DETROIT MI KDTW	/A	ENROUTE, FPT-INITIATED
11/10/2016	KDTW	DTW	ILS OR LOC RWY 21 L AMDT 12	/A	FPT-INITIATED, OAPM - CLEDET
11/10/2016	KDTW	DTW	ILS OR LOC RWY 22 L AMDT 31	/A	FPT-INITIATED, OAPM - CLEDET
11/10/2016	KDTW	DTW	ILS OR LOC RWY 27 L AMDT 5	/A	FPT-INITIATED, OAPM - CLEDET
11/10/2016	KDTW	DTW	ILS OR LOC RWY 27 R AMDT 13	/A	FPT-INITIATED, OAPM - CLEDET
11/10/2016	KDTW	DTW	ILS OR LOC RWY 3 R AMDT 17	/A	FPT-INITIATED, OAPM - CLEDET
11/10/2016	KDTW	DTW	ILS OR LOC RWY 4 R AMDT 19	/A	FPT-INITIATED, OAPM - CLEDET
11/10/2016	KDTW	DTW	ILS OR LOC Z RWY 22 R AMDT 4	/A	FPT-INITIATED, OAPM - CLEDET
11/10/2016	KDTW	DTW	ILS OR LOC Z RWY 4 L AMDT 4	/A	DECOM, FPT-INITIATED
11/10/2016	KDTW	DTW	ILS PRM RWY 21 L AMDT 1	/A	FPT-INITIATED, OAPM - CLEDET
11/10/2016	KDTW	DTW	ILS PRM RWY 22 L AMDT 1	/A	FPT-INITIATED, OAPM - CLEDET
11/10/2016	KDTW	DTW	ILS PRM RWY 3 R AMDT 2	/A	FPT-INITIATED, OAPM - CLEDET
11/10/2016	KDTW	DTW	ILS PRM RWY 4 R AMDT 3	/A	FPT-INITIATED, OAPM - CLEDET
11/10/2016	KDTW	DTW	ILS PRM Y RWY 22 R AMDT 1	/A	FPT-INITIATED, OAPM - CLEDET
11/10/2016	KDTW	DTW	ILS PRM Y RWY 4 L AMDT 2	/A	FPT-INITIATED, OAPM - CLEDET
11/10/2016	KDTW	DTW	ILS Y RWY 22 R AMDT 1	/A	FPT-INITIATED, OAPM - CLEDET
11/10/2016	KDTW	DTW	ILS Y RWY 4 L AMDT 1	/A	FPT-INITIATED, OAPM - CLEDET
11/10/2016	KDTW	DTW	RNAV (GPS) PRM RWY 21 L ORIG	/A	FPT-INITIATED, OAPM - CLEDET
11/10/2016	KDTW	DTW	RNAV (GPS) PRM RWY 22 L ORIG	/A	FPT-INITIATED, OAPM - CLEDET
11/10/2016	KDTW	DTW	RNAV (GPS) PRM RWY 3 R ORIG	/A	FPT-INITIATED, OAPM - CLEDET
11/10/2016	KDTW	DTW	RNAV (GPS) PRM RWY 4 R ORIG	/A	FPT-INITIATED, OAPM - CLEDET
11/10/2016	KDTW	DTW	RNAV (GPS) PRM Y RWY 22 R ORIG	/A	FPT-INITIATED, OAPM - CLEDET
11/10/2016	KDTW	DTW	RNAV (GPS) PRM Y RWY 4 L ORIG	/A	FPT-INITIATED, OAPM - CLEDET
11/10/2016	KDTW	DTW	RNAV (GPS) RWY 21 L AMDT 3	/A	FPT-INITIATED, OAPM - CLEDET
11/10/2016	KDTW	DTW	RNAV (GPS) RWY 22 L AMDT 2	/A	FPT-INITIATED, OAPM - CLEDET
11/10/2016	KDTW	DTW	RNAV (GPS) RWY 27 L AMDT 3	/A	FPT-INITIATED, OAPM - CLEDET
11/10/2016	KDTW	DTW	RNAV (GPS) RWY 27 R AMDT 3	/A	FPT-INITIATED, OAPM - CLEDET
11/10/2016	KDTW	DTW	RNAV (GPS) RWY 3 R AMDT 3	/A	FPT-INITIATED, OAPM - CLEDET
11/10/2016	KDTW	DTW	RNAV (GPS) RWY 4 R AMDT 4	/A	FPT-INITIATED, OAPM - CLEDET
11/10/2016	KDTW	DTW	RNAV (GPS) Y RWY 22 R ORIG	/A	FPT-INITIATED, OAPM - CLEDET
11/10/2016	KDTW	DTW	RNAV (GPS) Y RWY 4 L ORIG	/A	FPT-INITIATED, OAPM - CLEDET
11/10/2016	KDTW	DTW	RNAV (GPS) Z RWY 22 R AMDT 3	/A	FPT-INITIATED, OAPM - CLEDET
11/10/2016	KDTW	DTW	RNAV (GPS) Z RWY 4 L AMDT 3	/A	FPT-INITIATED, OAPM - CLEDET
3/2/2017	KDTW	DTW	STAR MIZAR FOUR DETROIT MI DTW	/A	ABBREV AMEND, FPT-INITIATED, MAGVA
8/17/2017	KDTW	DTW	RNAV (RNP) PRM RWY 03R ORIG	/A	FPT-INITIATED, OAPM - CLEDET
8/17/2017	KDTW	DTW	RNAV (RNP) PRM RWY 21L ORIG	/A	FPT-INITIATED, OAPM - CLEDET
8/17/2017	KDTW	DTW	RNAV (RNP) PRM RWY 22L ORIG	/A	FPT-INITIATED, OAPM - CLEDET
8/17/2017	KDTW	DTW	RNAV (RNP) PRM X RWY 03R ORIG	/A	FPT-INITIATED, OAPM - CLEDET

8/17/2017	KDTW	DTW	RNAV (RNP) PRM X RWY 03R ORIG	/A	FPT-INITIATED, OAPM - CLEDET
8/17/2017	KDTW	DTW	RNAV (RNP) PRM X RWY 04L ORIG	/A	FPT-INITIATED, OAPM - CLEDET
8/17/2017	KDTW	DTW	RNAV (RNP) PRM X RWY 21L ORIG	/A	FPT-INITIATED
8/17/2017	KDTW	DTW	RNAV (RNP) PRM X RWY 22R ORIG	/A	FPT-INITIATED, OAPM - CLEDET
8/17/2017	KDTW	DTW	RNAV (RNP) PRM Y RWY 22R ORIG	/A	FPT-INITIATED, OAPM - CLEDET
8/17/2017	KDTW	DTW	RNAV (RNP) RWY 21 L ORIG	/A	FPT-INITIATED, OAPM - CLEDET
8/17/2017	KDTW	DTW	RNAV (RNP) RWY 22 L ORIG	/A	FPT-INITIATED, OAPM - CLEDET
8/17/2017	KDTW	DTW	RNAV (RNP) X RWY 04L ORIG	/A	FPT-INITIATED
8/17/2017	KDTW	DTW	RNAV (RNP) X RWY 21 L ORIG	/A	FPT-INITIATED, OAPM - CLEDET
8/17/2017	KDTW	DTW	RNAV (RNP) X RWY 22 R ORIG	/A	FPT-INITIATED, OAPM - CLEDET
8/17/2017	KDTW	DTW	RNAV (RNP) X RWY 3R ORIG	/A	FPT-INITIATED, OAPM - CLEDET
8/17/2017	KDTW	DTW	RNAV (RNP) X RWY 4 L ORIG	/A	FPT-INITIATED, OAPM - CLEDET
8/17/2017	KDTW	DTW	RNAV (RNP) Y PRM RWY 04L ORIG	/A	FPT-INITIATED, OAPM - CLEDET
8/17/2017	KDTW	DTW	RNAV (RNP) Y RWY 22 R ORIG	/A	FPT-INITIATED
8/17/2017	KDTW	DTW	RNAV (RNP) Y RWY 4 L ORIG	/A	FPT-INITIATED, OAPM - CLEDET
8/17/2017	KDTW	DTW	RNAV (RNP) Z RWY 22 R ORIG	/A	FPT-INITIATED, OAPM - CLEDET
8/17/2017	KDTW	DTW	RNAV (RNP) Z RWY 4 L ORIG	/A	FPT-INITIATED, OAPM - CLEDET
12/7/2017	KDTW	DTW	SID AKRON FIVE DETROIT MI DTW	/A	OAPM - CLEDET
12/7/2017	KDTW	DTW	SID BARII (RNAV) ONE DETROIT MI DTW	/A	FPT-INITIATED, OAPM - CLEDET
12/7/2017	KDTW	DTW	SID CCOBB (RNAV) ONE DETROIT MI DTW	/A	FPT-INITIATED, OAPM - CLEDET
12/7/2017	KDTW	DTW	SID CLVIN (RNAV) ONE DETROIT MI DTW	/A	OAPM - CLEDET
12/7/2017	KDTW	DTW	SID ERRTH SIX DETROIT MI DTW	/A	OAPM - CLEDET
12/7/2017	KDTW	DTW	SID FORT WAYNE SEVEN DETROIT MI DTW	/A	OAPM - CLEDET
12/7/2017	KDTW	DTW	SID GGIBY (RNAV) ONE DETROIT MI DTW	/A	FPT-INITIATED, OAPM - CLEDET
12/7/2017	KDTW	DTW	SID HHOWE (RNAV) ONE DETROIT MI DTW	/A	FPT-INITIATED, OAPM - CLEDET
12/7/2017	KDTW	DTW	SID KAYLN (RNAV) ONE DETROIT MI DTW	/A	FPT-INITIATED, OAPM - CLEDET
12/7/2017	KDTW	DTW	SID LIDDS (RNAV) ONE DETROIT MI DTW	/A	FPT-INITIATED, OAPM - CLEDET
12/7/2017	KDTW	DTW	SID MIGGY (RNAV) ONE DETROIT MI DTW	/A	FPT-INITIATED, OAPM - CLEDET
12/7/2017	KDTW	DTW	SID MOONN NINE DETROIT MI DTW	/A	OAPM - CLEDET
12/7/2017	KDTW	DTW	SID PALACE EIGHT DETROIT MI DTW	/A	OAPM - CLEDET
12/7/2017	KDTW	DTW	SID PAVYL (RNAV) ONE DETROIT MI DTW	/A	FPT-INITIATED, OAPM - CLEDET
12/7/2017	KDTW	DTW	SID RICHMOND NINE DETROIT MI DTW	/A	OAPM - CLEDET
12/7/2017	KDTW	DTW	SID ROSEWOOD EIGHT DETROIT MI DTW	/A	OAPM - CLEDET
12/7/2017	KDTW	DTW	SID SNDRS (RNAV) ONE DETROIT MI KDTW	/A	FPT-INITIATED, OAPM - CLEDET
12/7/2017	KDTW	DTW	SID ST CLAIR EIGHT DETROIT MI DTW	/A	OAPM - CLEDET
12/7/2017	KDTW	DTW	SID ZETTR (RNAV) ONE DETROIT MI DTW	/A	FPT-INITIATED, OAPM - CLEDET
12/7/2017	KDTW	DTW	STAR BONZZ (RNAV) ONE DETROIT MI DTW	/A	FPT-INITIATED, OAPM - CLEDET
12/7/2017	KDTW	DTW	STAR CRAKN (RNAV) ONE DETROIT MI DTW	/A	FPT-INITIATED, OAPM - CLEDET
12/7/2017	KDTW	DTW	STAR CUUGR (RNAV) ONE DETROIT MI DTW	/A	FPT-INITIATED, OAPM - CLEDET
12/7/2017	KDTW	DTW	STAR FERRL (RNAV) ONE DETROIT MI DTW	/A	FPT-INITIATED, OAPM - CLEDET
12/7/2017	KDTW	DTW	STAR GRAYT (RNAV) ONE DETROIT MI DTW	/A	FPT-INITIATED, OAPM - CLEDET
12/7/2017	KDTW	DTW	STAR HANBL (RNAV) ONE DETROIT MI DTW	/A	FPT-INITIATED, OAPM - CLEDET
12/7/2017	KDTW	DTW	STAR HAYLL (RNAV) ONE DETROIT MI DTW	/A	FPT-INITIATED, OAPM - CLEDET
12/7/2017	KDTW	DTW	STAR HTROD (RNAV) ONE DETROIT MI DTW	/A	FPT-INITIATED, OAPM - CLEDET
12/7/2017	KDTW	DTW	STAR KKISS (RNAV) ONE DETROIT MI KDTW	/A	FPT-INITIATED, OAPM - CLEDET
12/7/2017	KDTW	DTW	STAR KLYNK (RNAV) ONE DETROIT MI KDTW	/A	FPT-INITIATED, OAPM - CLEDET
12/7/2017	KDTW	DTW	STAR LAYKS (RNAV) ONE DETROIT MI DTW	/A	FPT-INITIATED, OAPM - CLEDET
12/7/2017	KDTW	DTW	STAR LECTR (RNAV) ONE DETROIT MI DTW	/A	FPT-INITIATED, OAPM - CLEDET
12/7/2017	KDTW	DTW	STAR MIZAR FOUR DETROIT MI DTW	/A	OAPM - CLEDET
12/7/2017	KDTW	DTW	STAR POLAR FIVE DETROIT MI DTW	/A	OAPM - CLEDET
12/7/2017	KDTW	DTW	STAR RKCTY (RNAV) ONE DETROIT MI DTW	/A	FPT-INITIATED, OAPM - CLEDET
12/7/2017	KDTW	DTW	STAR SPICA TWO DETROIT MI DTW	/A	OAPM - CLEDET
12/7/2017	KDTW	DTW	STAR TPGUN (RNAV) ONE DETROIT MI DTW	/A	FPT-INITIATED, OAPM - CLEDET
12/7/2017	KDTW	DTW	STAR VCTRZ (RNAV) ONE DETROIT MI DTW	/A	FPT-INITIATED, OAPM - CLEDET
12/7/2017	KDTW	DTW	STAR WEEDA TWO DETROIT MI DTW	/A	OAPM - CLEDET
12/7/2017	KDTW	DTW	STAR WNGNT (RNAV) ONE DETROIT MI DTW	/A	FPT-INITIATED, OAPM - CLEDET

NAVAID ID / RWY	Type / Old No.	Use / New RWY/Note
ALA (CAT I)	ILS	LOC
BZB (CAT I)	ILS	LOC
DMI (CAT I)	ILS	LOC
DTW (CAT III)	ILS	LOC
DWC (CAT I)	ILS	LOC
EJR (CAT I)	ILS	LOC
EPA (CAT I)	ILS	LOC
HJT (CAT III)	ILS	LOC
HUU (CAT III)	ILS	LOC
JKI (CAT I)	ILS	LOC

FPT/IFP Teams: Report Type "MAGVAR" must be added to Task(s) impacted by MAGVAR action..

Runway Numbers are affected with the airport rotation; 03L/21R change to 04L/22R, 03R/21L change to 04R/22L, 04L/22R change to 05L/23R, 04R/22L change to 05R/23L, 09L/27R change to 10L/28R and 09R/27L change to 10R/28L; however, will not be changed per C-FPT

ASSOCIATED NAVAIDS:

I-ALA (R4L-CAT I)

I-BZB (R22R-CAT I)

I-DMI (R27R-CAT I)

I-DTW (R4R-CAT III)

I-DWC (R22L-CAT I)

I-EJR (R21L-CAT I)

I-EPA (R27L-CAT I)

I-HJT (R4L-CAT III)

I-HUU (R3R-CAT III)

I-JKI (R22R-CAT I)

AKRON (ACO) VOR/DME 4W1965 9W2020 (4.67 Out of Tolerance)

ALAINA (JZI) NDB/M (MISSED R3R)(ALT MISSED R22L) 6W1990 7W2020 (1.47 In Tolerance)

GROSSE ILE (RYS) NDB/M (MISSED R21L) 7W2010 7W2020 (0.48 In Tolerance)

CARLETON (CRL) VORTAC (ALT MISSED R21L)(MISSED R22L) (MISSED R27L) 3W1965 7W2020 (4.25 Out of Tolerance)

CHARDON (CXR) VOR/DME 5W1965 9W2020 (3.78 Out of Tolerance)

DETROIT (DXO) VOR/DME 6W1990 7W2020 (1.35 Out of Tolerance)

DUNKIRK (DKK) VORTAC 7W1965 10W2020 (3.25 Out of Tolerance)

FLAG CITY (FBC) VORTAC 2W1965 7W2020 (4.83 Out of Tolerance)

FLINT (FNT) VORTAC 6W2000 7W2020 (1.22 In Tolerance)

FORT WAYNE (FWA) VORTAC 0E1965 6W2020 (5.78 Out of Tolerance)

JAMESTOWN (JHW) VOR/DME 7W1965 10W2020 (3.28 Out of Tolerance)

JACKSON (JXN) VOR/DME 5W1985 7W2020 (1.55 In Tolerance)

KALAMAZOO (AZO) VOR/DME 1W1965 6W2020 (4.72 Out of Tolerance)

KEATING (ETG) VORTAC 10W1985 11W2020 (0.67 In Tolerance)

LITCHFIELD (LFD) VOR/DME 5W1995 6W2020 (1.28 In Tolerance)

LONDON (YXU) VOR/DME 8W1995 9W2020 9° 7' W ± 0° 22' changing by 0° 1' W per year

RICHMOND (RID) VORTAC 3W1985 6W2020 (2.83 In Tolerance)

ROSEWOOD (ROD) VORTAC 5W1995 7W2020 (1.50 In Tolerance)

PONTIAC (PSI) VORTAC (ALT MISSED R4R)(MISSED R27R)(ALT MISSED R22R) 3W1965 7W2020 (4.32 Out of Tolerance)

PULLMAN (PMM) VOR/DME 0E1965 5W2020 (5.33 Out of Tolerance)

MADDS (DE)NDB/C (MISSED R4R) 5W1980 8W2020 (2.60 In Tolerance)
SALEM (SVM) VORTAC (MISSED R4L)(MISSED R22R) 3W1965 7W2020 (4.22 Out of Tolerance)
SARNIA (ZR)NDB/M 6W1980 8W2020 (8° 19' W \pm 0° 22' changing by 0° 1' W per year)
WATERLOO (YWT) VOR/DME 8W1985 10W2020 (9° 44' W \pm 0° 23' changing by 0° 0' W per year)
WATERVILLE (VWV) VOR/DME 2W1965 7W2020 (5.00 Out of Tolerance)
WINDSOR (YQG) VOR/DME (ALT MISSED R3R) 6W1985 8W2020 (7° 45' W \pm 0° 22' changing by 0° 2' W per year)
YIPPS (YI) NDB/C (ALT MISSED R4L) 6W1995 7W2020 (1.10 In Tolerance)
DETROIT (DTWA) ASR-9 6W1995 7W2020 (1.33 Out of Tolerance)
NORTHVILLE (DTWC) ASR-9 6W1995 7W2020 (1.33 Out of Tolerance)

IF you have any questions please notify: Tony.R.Lawson@faa.gov

(405) 954-2788