


Flight Procedure Tracking Form		Action: FLIGHT CHECK	Task Type: IAP	Date Open: 06/09/2015	Task #: 2015060927130701006	Request #: 20150609271307
Procedure: ILS PRM RWY 22L AMDT 1			Airport ID: KDTW	Airport: DETROIT METROPOLITAN WAYNE COUNTY		Reimbursable #: NO
City: DETROIT	ST: MI	GPS #:	Estimated Chart Date: 11/10/2016		FICO #:	
Fac ID: DWC		Fac. Type: ILS		Specialist: JAMES ROGERS		
Procedure Review						
	Rec'd	Rel'd	Full Name	Comments		
Lead:	05/02/2016					
QA:						
Liaison:						
Procedure Comments: ENROUTE-NON Remark Type: INFORMATION PENDING DATA USED FOR KDTW AIRPORT. ACTIVE DATA USED FOR THE RUNWAY. ASSIGNED MAGVAR: KDTW: OLD 6W - NEW 7W CONTACT: JACOB POWERS 405.954.8702 / KISSY MAXFIELD 405.954.4919, AJV-5420 POCS						

DETROIT, MICHIGAN

AL-119 (FAA)

ILS PRM RWY 22L

(CLOSE PARALLEL)

DETROIT METROPOLITAN WAYNE COUNTY (DTW)

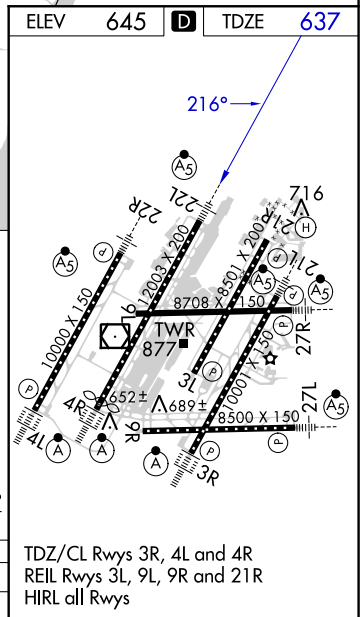
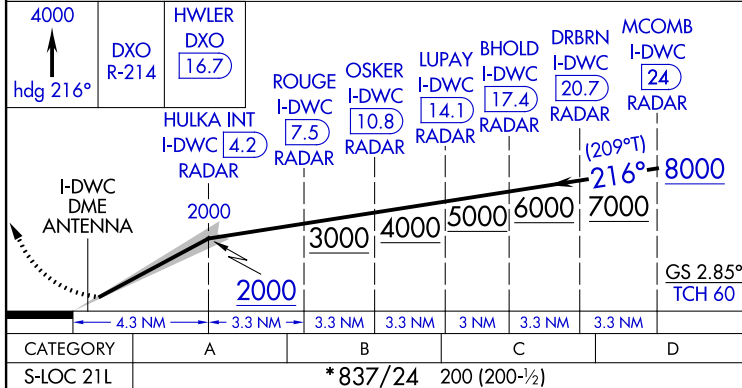
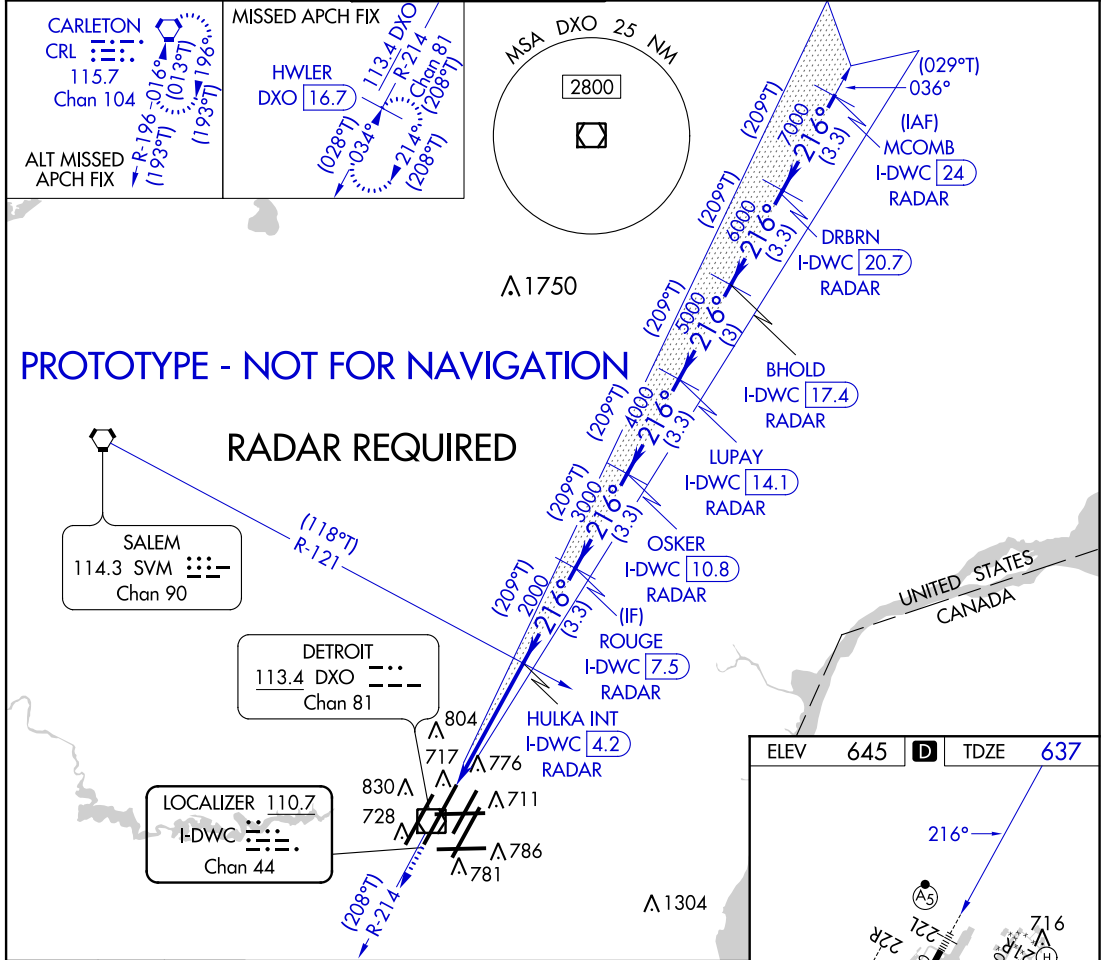
LOC/DME I-DWC 110.7 Chan 44	APP CRS 216°	Rwy Idg TDZE Apt Elev 12003 637 645
---	------------------------	---

▼ DME required.
Simultaneous approach authorized.
* RVR 1800 authorized with use of FD OR AP or HUD to DA.



MISSED APPROACH: Climb to 4000 on
DXO R-214 to HWLER/DXO VOR/DME
16.7 DME/RADAR and hold.

ATIS 133.675	DETROIT APP CON 124.05 363.2 (WEST) 125.15 363.2 (EAST)	METRO TOWER 135.0 317.725 (WEST) 118.4 317.725 (EAST) PRM 135.775	GND CON 121.8 (NW) 119.45 (NE) 132.72 (SW) 119.25 (SE)	CLNC DEL 120.65	CPDLC
------------------------	---	---	--	---------------------------	-------



DETROIT, MICHIGAN 42°13'N-83°21'W DETROIT METROPOLITAN WAYNE COUNTY (DTW)
Amdt 1 FIG ILS PRM RWY 22L (SIMULTANEOUS CLOSE PARALLEL)

AUTOMATED AL-119 ILS PRM RWY 22L
(SIMULTANEOUS CLOSE PARALLEL)

EC-1
07/08/2016
COMPILER: LS
REVIEWER:
DBL CHKR:
EFF: FIG

16035

AL-119 (FAA)

(SIMULTANEOUS CLOSE PARALLEL)

DETROIT METROPOLITAN WAYNE COUNTY (DTW)

LOC/DME I-DWC 110.7 Chan 44	APP CRS 215°	Rwy Idg 12003 TDZE 637 Apt Elev 645
---	------------------------	--

T DME or radar required. Simultaneous close parallel approach authorized with ILS PRM Rwy 21L and ILS PRM Y Rwy 22R. Procedure NA when glide slope not available. Dual VHF comm required. See additional requirements on AAUP. * RVR 1800 authorized with use of FD or AP or HUD to DA.

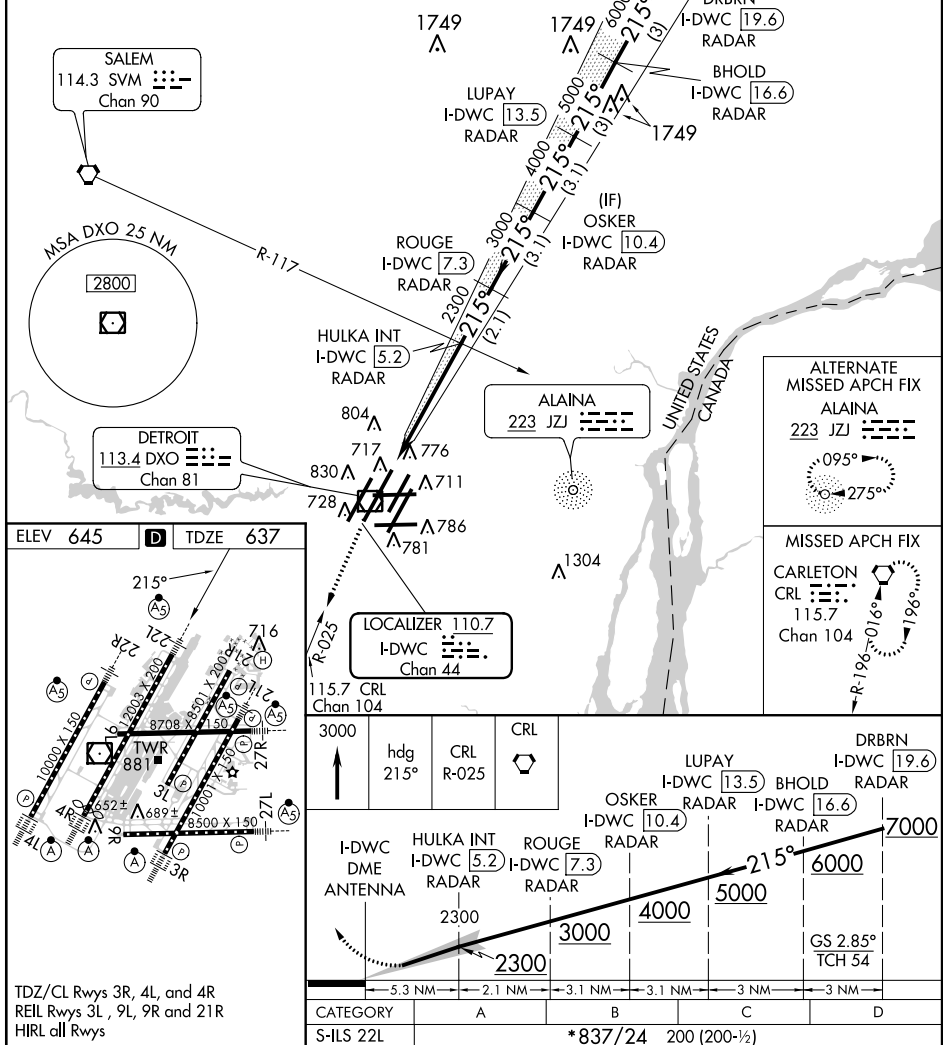
MALSR



MISSED APPROACH:
Climb to 3000 on
heading 215° and
CRL R-025 to CRL
VORTAC and hold.

ATIS 133.675	DETROIT APP CON 124.05 363.2 (WEST) 125.15 363.2 (EAST)	METRO TOWER 135.0 317.725 (WEST) 118.4 317.725 (EAST) PRM 135.775	GND CON 121.8 (NW) 119.45 (NE) 132.72 (SW) 119.25 (SE)	CLNC DEL 120.65
------------------------	---	---	--	---------------------------

RADAR REQUIRED



42°13'N-83°21'W

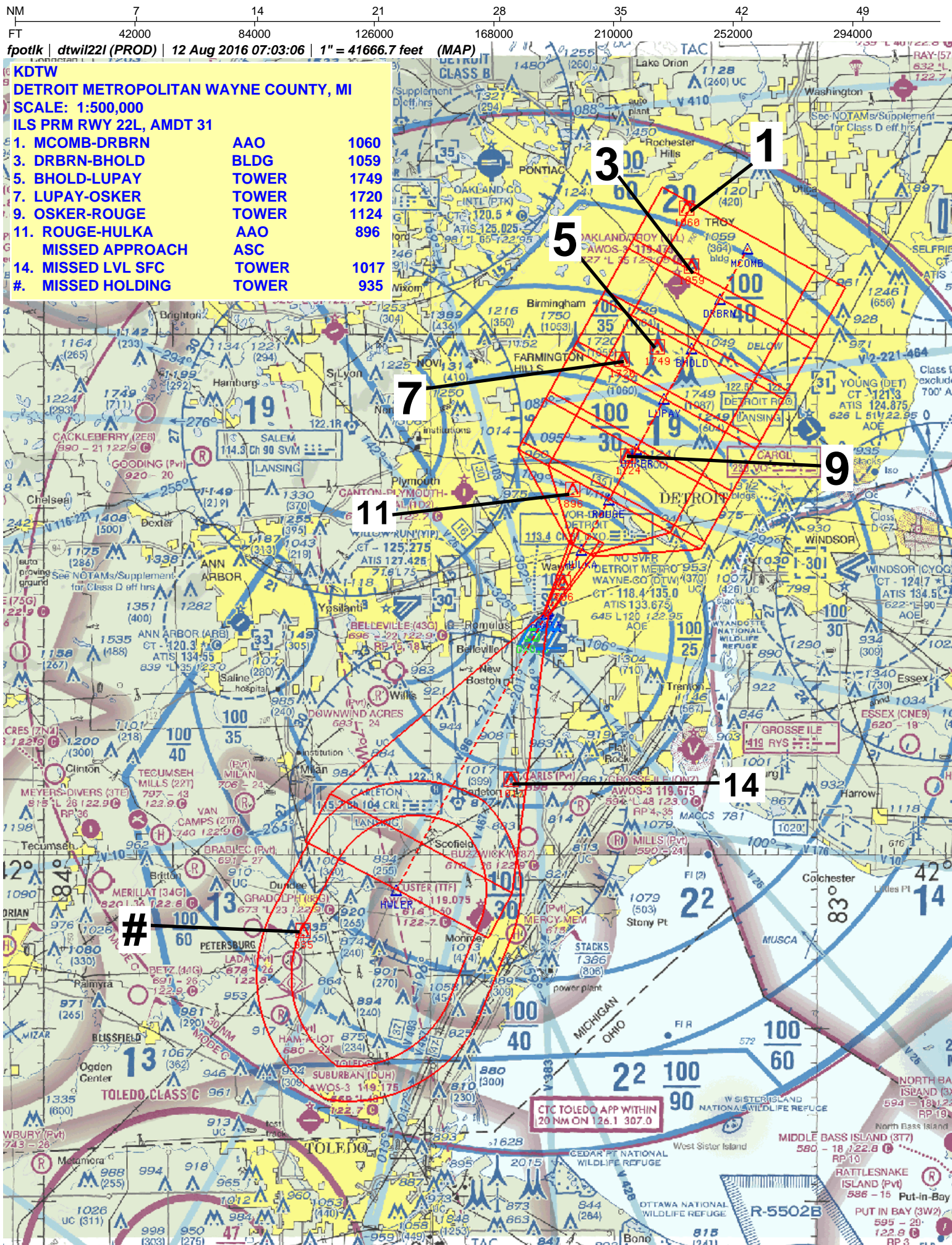
DETROIT METROPOLITAN WAYNE COUNTY (DTW)

Orig-F 15OCT15

ILS PRM RWY 22L (SIMULTANEOUS CLOSE PARALLEL)

EC-1, 28 APR 2016 to 26 MAY 2016

EC-1. 28 APR 2016 to 26 MAY 2016

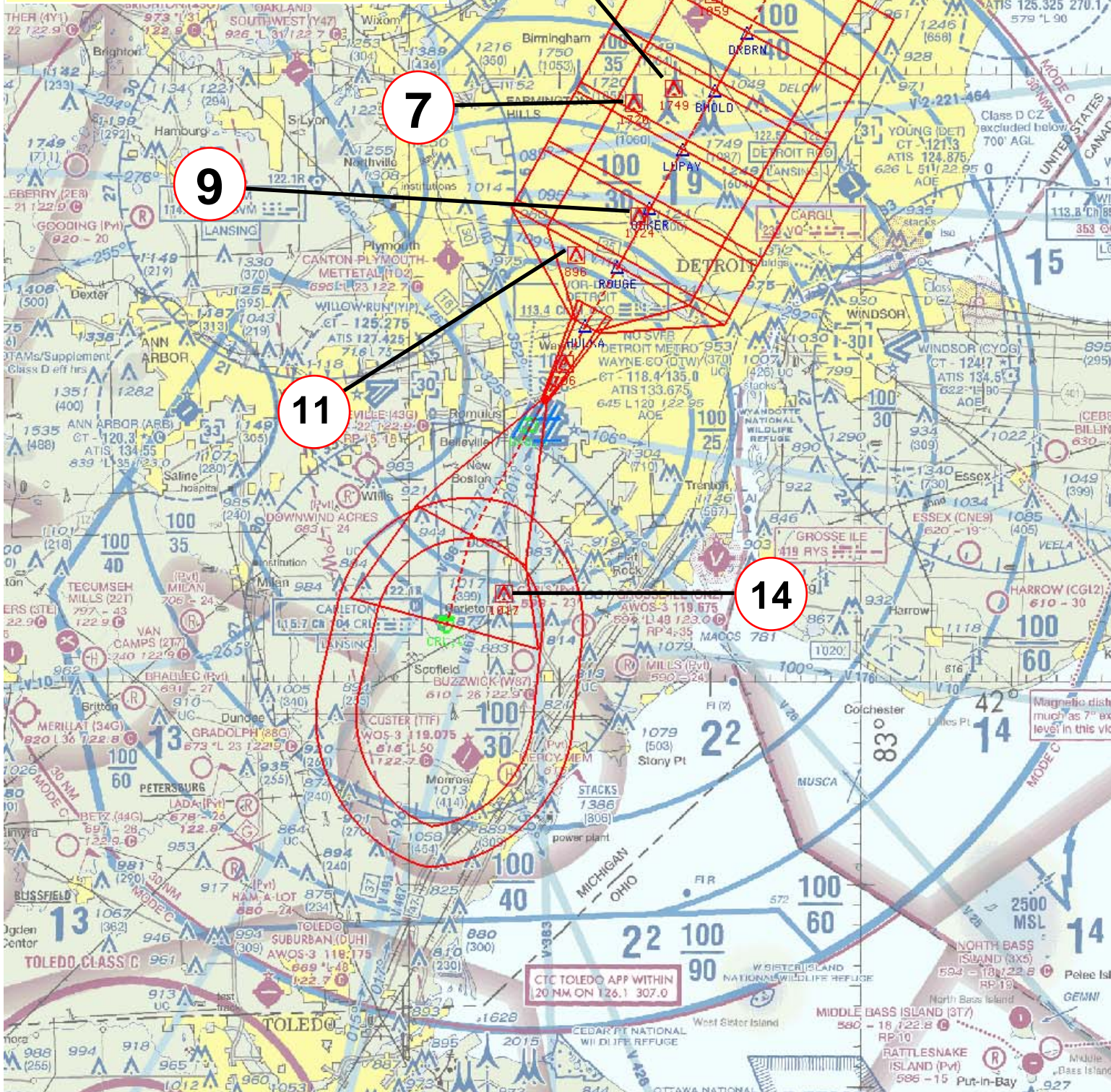


NM 7 14 21 28 35 42 49
FT 42000 84000 126000 168000 210000 252000 294000

fpojxr | dtwil22la (PROD) | 21 Jun 2016 07:50:40 | 1" = 41666.7 feet (MAP)

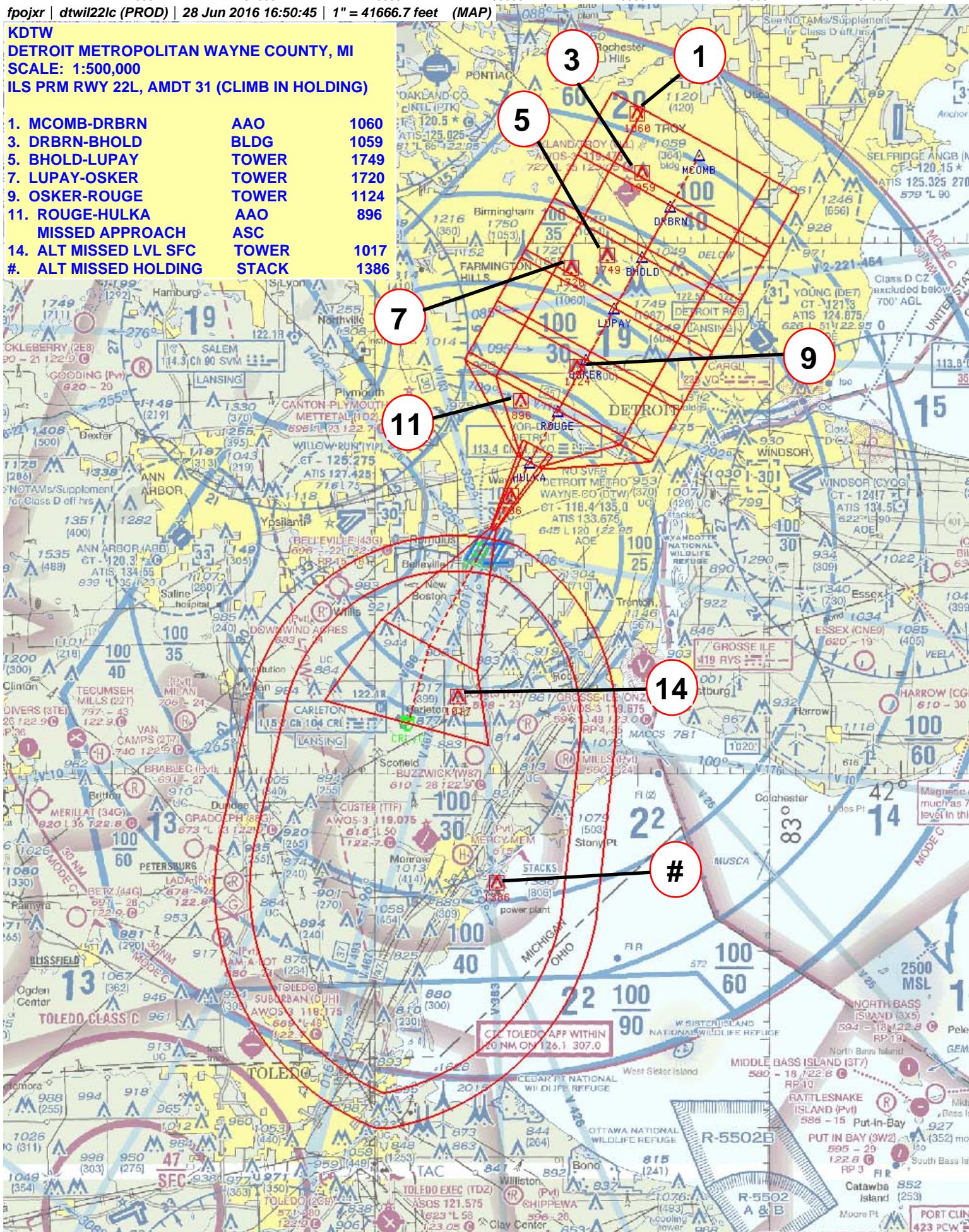
KDTW
DETROIT METROPOLITAN WAYNE COUNTY, MI
SCALE: 1:500,000
ILS PRM RWY 22L, AMDT 31 (ALT MISSED)

1. MCOMB-DRBRN	AAO	1060
3. DRBRN-BHOLD	BLDG	1059
5. BHOLD-LUPAY	TOWER	1749
7. LUPAY-OSKER	TOWER	1720
9. OSKER-ROUGE	TOWER	1124
11. ROUGE-HULKA	AAO	896
MISSED APPROACH	ASC	
14. ALT MISSED LVL SFC	TOWER	1017
14. ALT MISSED HOLDING	TOWER	1017



KDTW
DETROIT METROPOLITAN WAYNE COUNTY, MI
SCALE: 1:500,000
ILS PRM RWY 22L, AMDT 31 (CLIMB IN HOLDING)

1.	MCOMB-DRBRN	AAO	1060
3.	DRBRN-BHOLD	BLDG	1059
5.	BHOLD-LUPAY	TOWER	1749
7.	LUPAY-OSKER	TOWER	1720
9.	OSKER-ROUGE	TOWER	1124
11.	ROUGE-HULKA	AAO	896
	MISSED APPROACH	ASC	
14.	ALT MISSED LVL SFC	TOWER	1017
#.	ALT MISSED HOLDING	STACK	1386

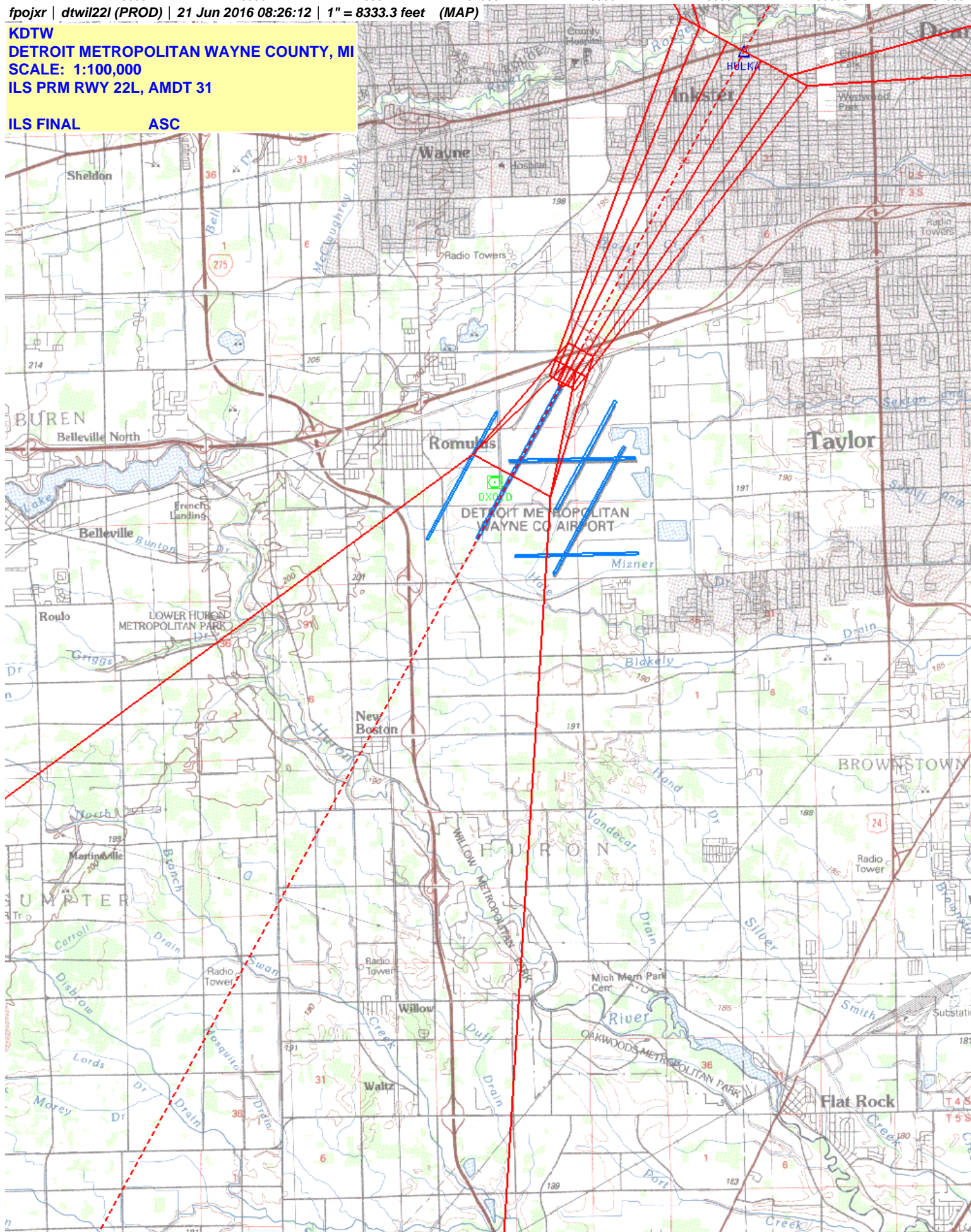


NM
 1 2 3 4 5 6 7 8 9 10
 FT
 8000 16000 24000 32000 40000 48000 56000 64000

fpojxr | dtwil22l (PROD) | 21 Jun 2016 08:26:12 | 1" = 8333.3 feet (MAP)

KDTW
DETROIT METROPOLITAN WAYNE COUNTY, MI
SCALE: 1:100,000
ILS PRM RWY 22L, AMDT 31

ILS FINAL ASC

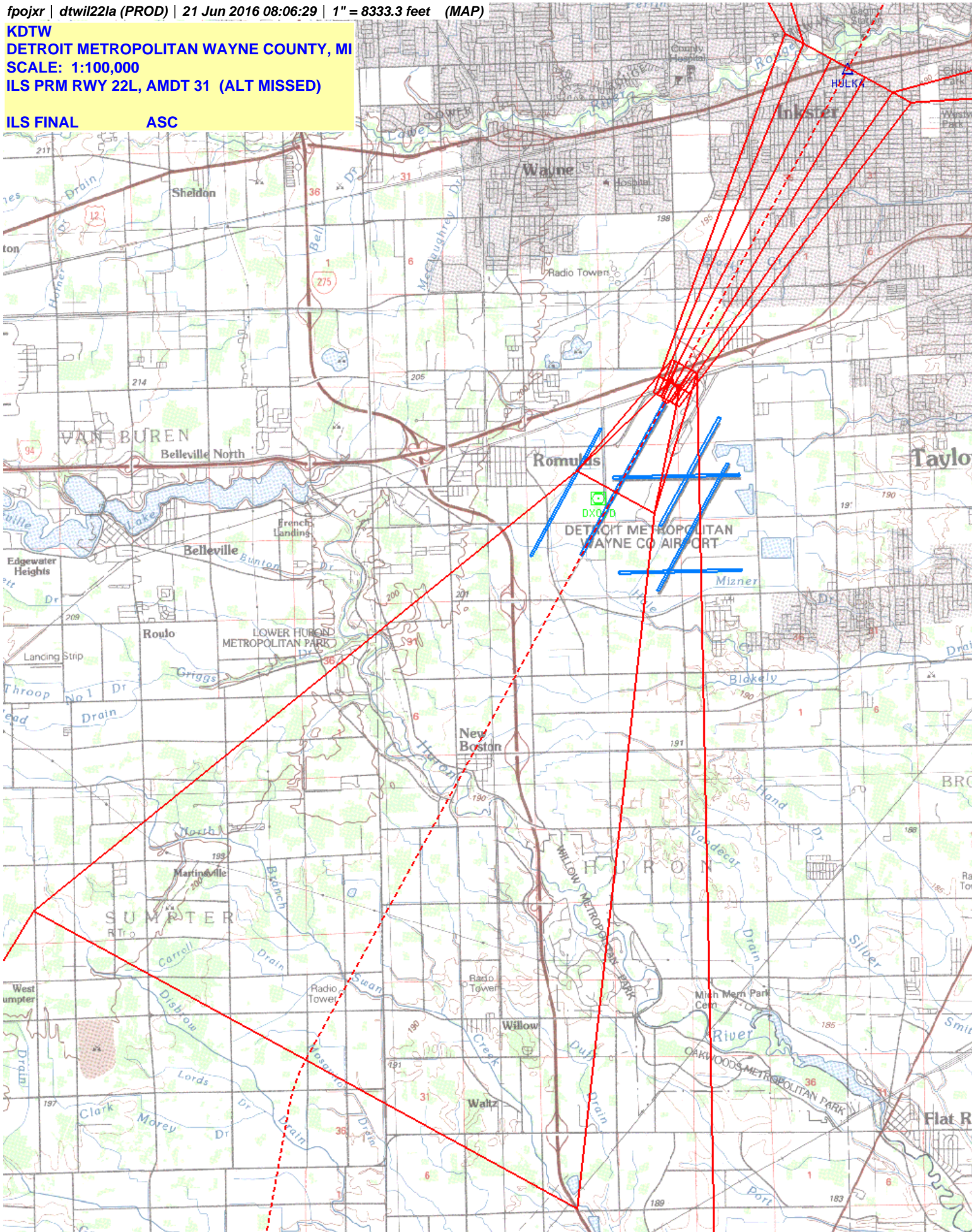


NM 1 2 3 4 5 6 7 8 9 10
FT 8000 16000 24000 32000 40000 48000 56000 64000

fpojxr | dtwil22la (PROD) | 21 Jun 2016 08:06:29 | 1" = 8333.3 feet (MAP)

KDTW
DETROIT METROPOLITAN WAYNE COUNTY, MI
SCALE: 1:100,000
ILS PRM RWY 22L, AMDT 31 (ALT MISSED)

ILS FINAL ASC



TERMINAL AIRSPACE DATA REQUIREMENTS

CITY: **DETROIT**

STATE: **MI**

AIRPORT NAME: **DETROIT METROPOLITAN WAYNE COUNTY**

ID: **KDTW**

PROCEDURE: **ILS PRM RWY 22L**

AMDT: **1**

DOCKET#: **NOT REQUIRED**

(96-AXX-X/Required/Not Required)

ALL DIST TO 1/100 NM; ELEV TO NEAREST FT; COORD TO 1/100 SEC; DEG TO 1/100 DG.

- | | | | |
|---|---------------------|--------------------------------|--------------------|
| 1. Distance from | <u>THLD</u> | to 1000' point | <u>3.31</u> |
| <small>(Enter THLD, FAF, ARP, FACILITY, as appropriate)</small> | | | |
| 2. Width of | <u>FINAL</u> | segment at 1000' point | <u>0.94</u> |
| <small>(Enter appropriate segment, final, intermediate, etc.)</small> | | | |
| 3. True Course of | <u>FINAL</u> | segment containing 1000' point | <u>208.71</u> |
| 4. High Terrain in | <u>FINAL</u> | segment containing 1000' point | <u>693</u> |
| 5. Distance from | <u>THLD</u> | to 1500' point | <u>5.01</u> |
| <small>(If 1500' point in PT maneuvering area or holding pattern note in remarks)</small> | | | |
| 6. Width of | <u>INTERMEDIATE</u> | segment at 1500' point | <u>1.29</u> |
| 7. True Course of | <u>INTERMEDIATE</u> | segment containing 1500' point | <u>208.71</u> |
| 8. High Terrain in | <u>INTERMEDIATE</u> | segment containing 1500' point | <u>696</u> |
| 9. Threshold Coordinates (if straight-in) ... | <u>421352.37N</u> | / | <u>0832059.97W</u> |
| 10. ARP Coordinates | <u>421244.70N</u> | / | <u>0832112.20W</u> |
| 11. Runway Approach End and distance furthest from ARP | | RWY | <u>04L</u> |
| | | Distance | <u>1.50</u> NM |
| 12. FAF Coordinates | <u>421739.24N</u> | / | <u>0831812.57W</u> |

REMARKS: Approach/Drawing attached.