

Flight Procedure Tracking Form		Action: FLIGHT CHECK	Task Type: IAP	Date Open: 05/28/2015	Task #: 2015052833939201004	Request #: 20150528339392
Procedure: RNAV (GPS) RWY 34R AMDT 3			Airport ID: KAFW	Airport: FORT WORTH ALLIANCE		Reimbursable #: NO
City: FORT WORTH	ST: TX	GPS #:	Estimated Chart Date: 03/29/2018		FICO #:	
Fac ID: N/A		Fac. Type:			Specialist: RUSSELL ROSLEWSKI	
Procedure Review						
	Rec'd	Rel'd	Full Name	Comments		
Lead:	06/27/2017	10/10/2017	DION LANCIA			
QA:	10/10/2017		J ZEDER 11/27/2017 ¹⁶			
Liaison:						
Procedure Comments:			Remark Type: INFORMATION			
<p>ENROUTE-NON</p> <p>CONTACT DION LANCIA, 405-954-1267</p> <p>PROCEDURE BUILT TO PENDING AIRPORT AND RUNWAY DATA EFFECTIVE 03/29/2018.</p>						

WAAS CH 82324 W34A	APP CRS 346°	Rwy Idg TDZE Apt Elev	8116 681 723
--	------------------------	-----------------------------	---

RNAV (GPS) RWY 34R

FORT WORTH ALLIANCE (A/FW)

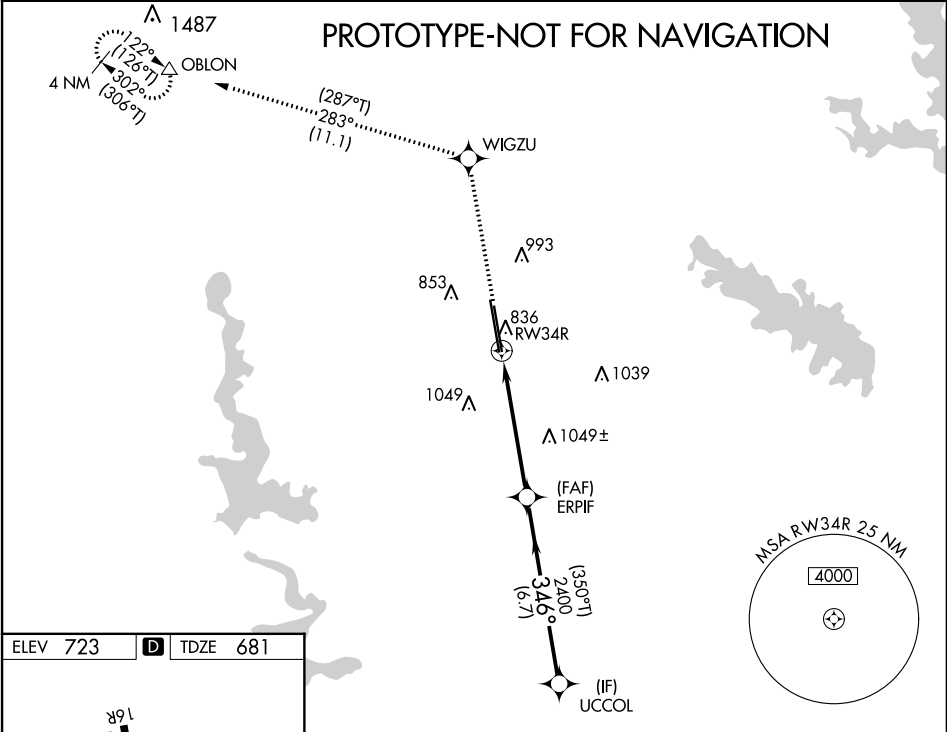
▼ For uncompensated Baro-VNAV systems, LNAV/VNAV NA below -8°C (18°F) or above 54°C (130°F). Circling NA east of Rwy 16L-34R. DME/DME RNP-0.3 NA.

▲ For inop ALS, increase LPV Cat E visibility to RVR 4000, increase LNAV/VNAV all Cats visibility to 2 SM, increase LNAV Cat E visibility to 1½ SM.

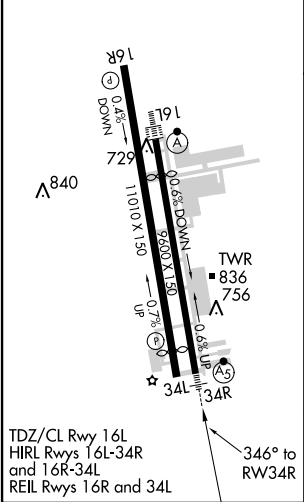
MALSR

MISSED APPROACH: Climb to 3000 direct WIGZU and on track 283° to OBLON and hold.

ATIS 126.925	REGIONAL APP CON 118.1 306.95	ALLIANCE TOWER 135.15 257.9	GND CON 132.65 306.2	CLNC DEL 128.725
------------------------	---	---------------------------------------	--------------------------------	----------------------------



ELEV 723	TDZE 681
----------	----------



	3000	WIGZU	OBLON	ERPIF	UCCOL	
		tr 283°				
	*LNAV only.		*1.6 NM to RWY 34R			
CATEGORY	A	B	C	D	E	
LPV DA	881/18		200 (200-½)			
LNAV/VNAV DA	1437-1¾		756 (800-1¾)			
LNAV MDA	1240/24	559 (600-½)	1240/60 559 (600-1¼)			
CIRCLING	1240-1 517 (600-1)	1320-1 597 (600-1)	1360-1¾ 637 (700-1¾)	1380-2 657 (700-2)	1380-2¼ 657 (700-2¼)	

