

Flight Procedure Tracking Form		Action: FLIGHT CHECK	Task Type: IAP	Date Open: 05/28/2015	Task #: 2015052824305702001	Request #: 20150528243057
Procedure: RNAV (GPS) RWY 12 AMDT 0A			Airport ID: KGCK	Airport: GARDEN CITY RGNL		Reimbursable #: NO
City: GARDEN CITY	ST: KS	GPS #:	Estimated Chart Date: 12/05/2019		FICO #:	
Fac ID: N/A		Fac. Type:			Specialist: STEVEN SCHUTRUM	
Procedure Review						
	Rec'd	Rel'd	Full Name	Comments		
Lead:	07/14/2015	03/22/2019	WARDELL HENNING			
QA:	03/22/2019					
Liaison:						
Procedure Comments:			ENROUTE-NON	Remark Type: INFORMATION		
CLEAR FDC NOTAM 8/8901. PENDING DATA USED FOR KGCK. CONTACT: WARDELL HENNING: 405.954.9954						

QUALITY
41
CHECKED

GARDEN CITY, KANSAS

AL-491 (FAA)

FIG

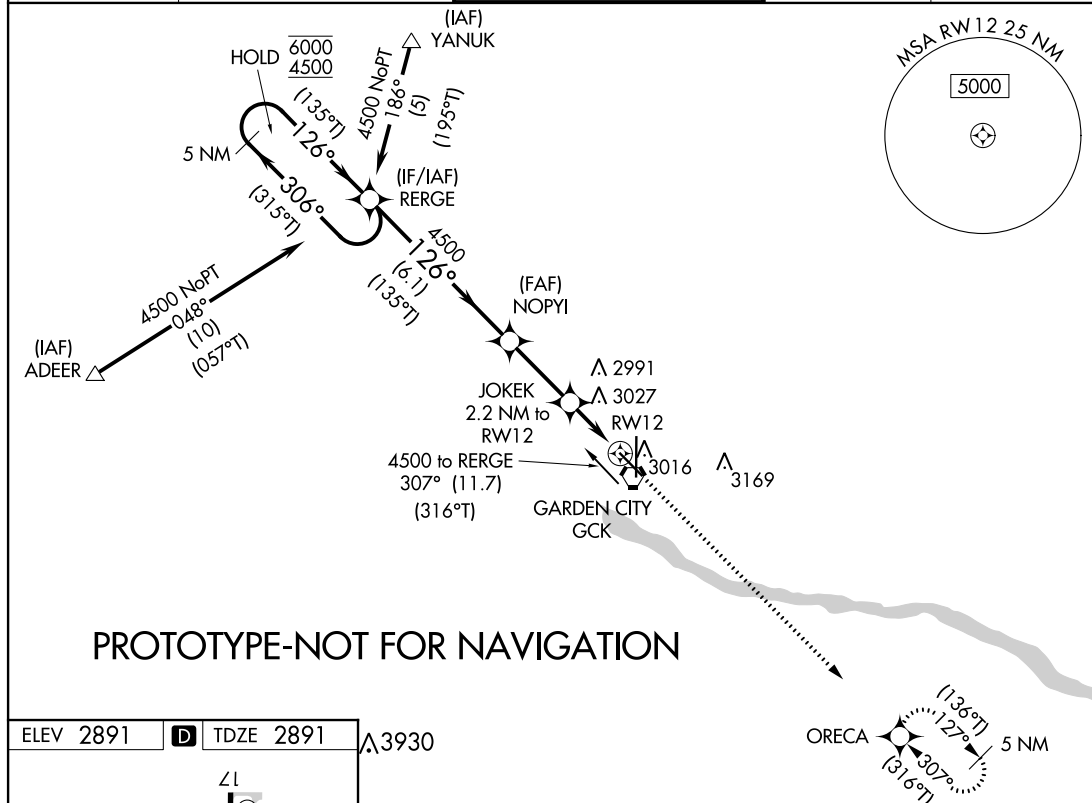
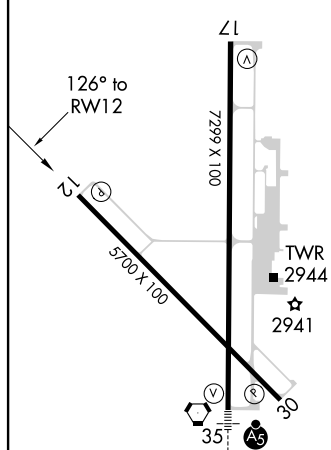
WAAS CH 77803 W12A	APP CRS 126°	Rwy Idg TDZE Apt Elev	5700 2891 2891
--	------------------------	-----------------------------	---

RNAV (GPS) RWY 12

GARDEN CITY RGNL (GCK)

RNP APCH.			MISSED APPROACH: Climb to 4600 direct ORECA and hold.	
<p>T For uncompensated Baro-VNAV systems, procedure NA below -20°C or above 43°C.</p>				

ASOS 121.325	KANSAS CITY CENTER 125.2 269.4	GARDEN CITY TOWER* 118.15 (CTAF) 0 254.4	GND CON 119.0	UNICOM 122.95
------------------------	--	--	-------------------------	-------------------------

ELEV 2891 **D** TDZE 2891 **A**3930

REIL Rwy 12, 17 and 30 **L**
MIRL Rwy 12-30 **L**
HIRL Rwy 17-35 **L**

5 NM Holding Pattern (315°T)		5 NM		5 NM	
6000		4500		4600	
126° to RW12		126°		126°	
GP 3.00°		TCH 47		*LNAV only	
6.1 NM		2.6 NM		1.1 NM	
1.1 NM		1.1 NM		1.1 NM	
CATEGORY	A	B	C	D	
LPV DA	3141-1 250 (300-1)				
LNAV/VNAV DA	3184-1 293 (300-1)				
LNAV MDA	3280-1 389 (400-1)	3280-1 389 (400-1)	3280-1 389 (400-1)	3280-1 389 (400-1)	
CIRCLING	3320-1 429 (500-1)	3360-1 469 (500-1)	3480-1 589 (600-1)	3480-2 589 (600-2)	

GARDEN CITY, KANSAS

GARDEN CITY RGNL (GCK)

Orig-A FIG

37°56'N-100°43'W

RNAV (GPS) RWY 12

AUTOMATED AL-491 RNAV (GPS) RWY 12

NC-2
7 MAR 2019
COMPILER: LS
REVIEWER:
DBL CHKR:
EFF DATE: FIG

WAAS CH 77803 W12A	APP CRS 126°	Rwy Idg 5700 TDZE 2891 Apt Elev 2891
--	------------------------	---

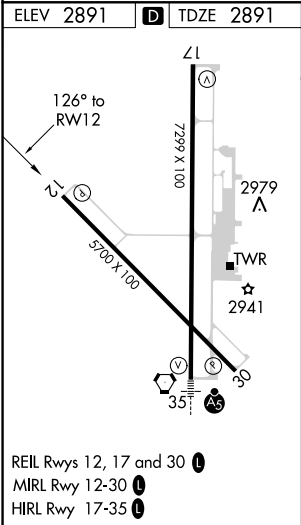
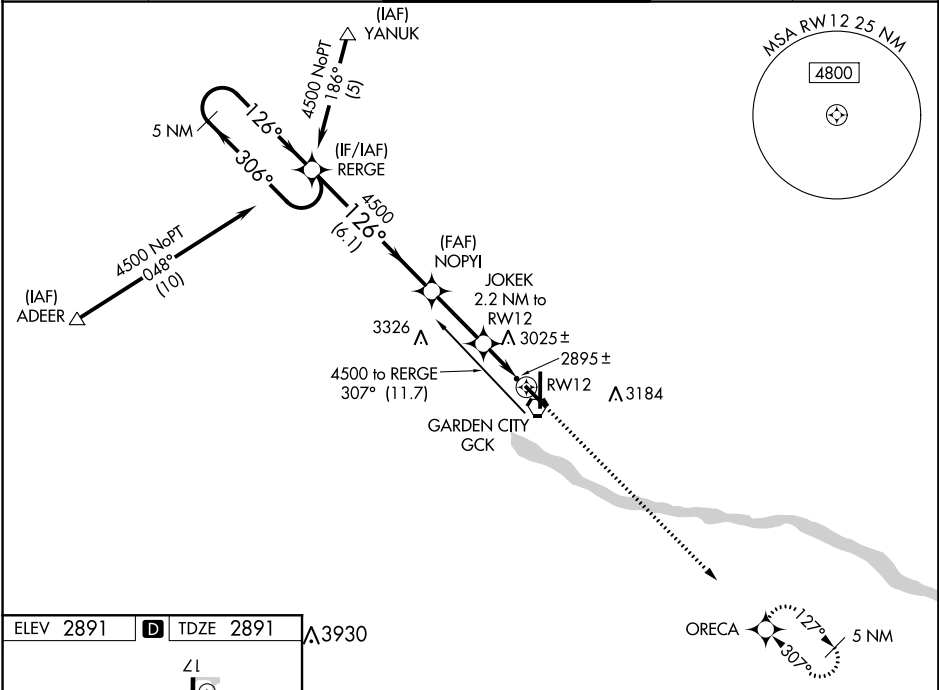
OLD

RNAV (GPS) RWY 12
GARDEN CITY RGNL (GCK)

⚠ If local altimeter setting not received, use Dodge City Rgnl altimeter setting and increase all DAs 128 feet and all MDAs 140 feet. Baro-VNAV NA when using Dodge City Rgnl altimeter setting. For uncompensated Baro-VNAV systems, LNAV/VNAV NA below -20°C (-4°F) or above 43°C (109°F). DME/DME RNP-0.3 NA. VDP NA when using Dodge City Rgnl altimeter setting.

MISSED APPROACH:
Climb to 4600 direct ORECA and hold.

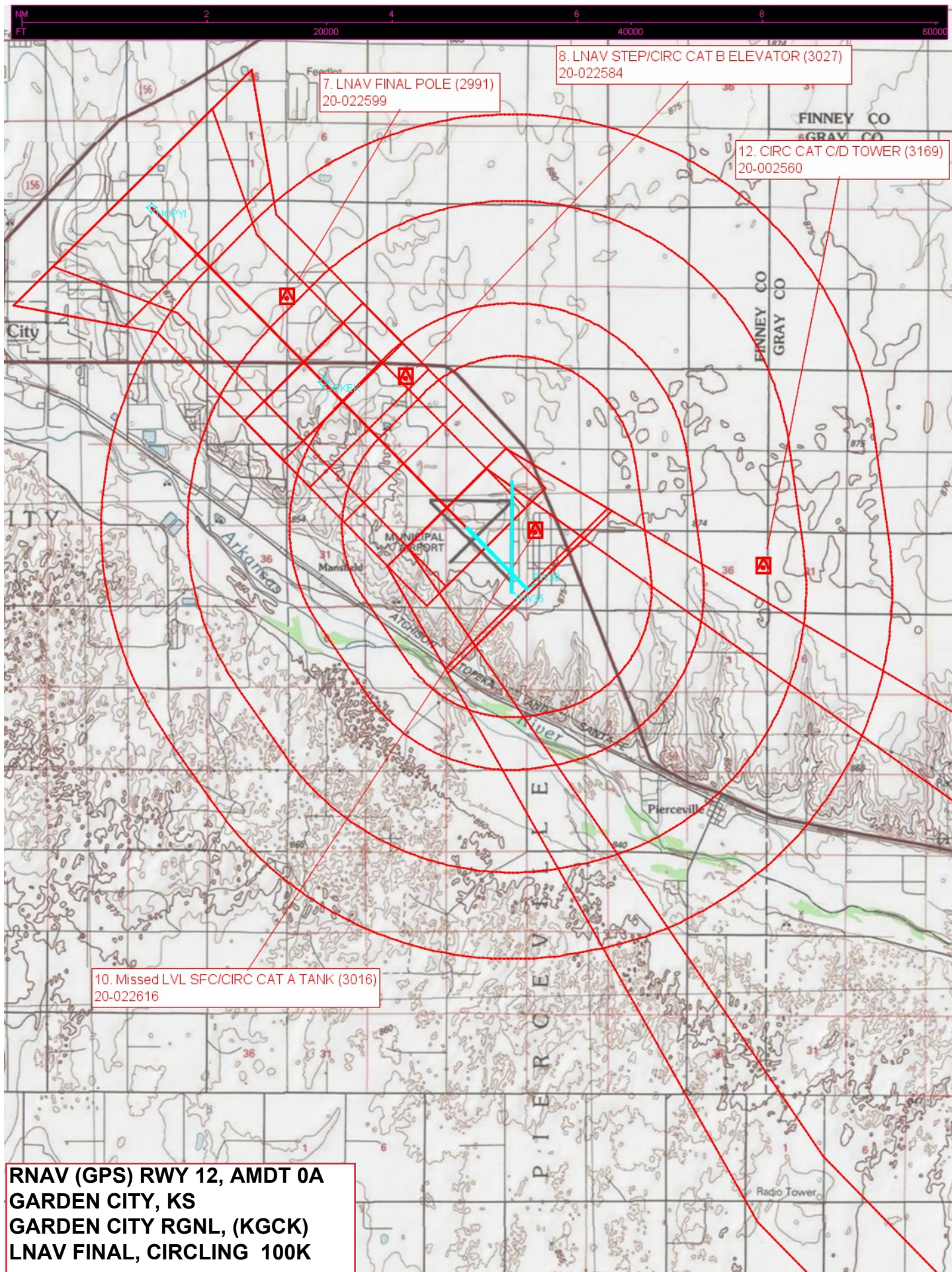
ASOS 121.325	KANSAS CITY CENTER 125.2 269.4	GARDEN CITY TOWER* 118.15 (CTAF) 0 254.4	GND CON 119.0	UNICOM 122.95
------------------------	--	--	-------------------------	-------------------------



5 NM Holding Pattern		306°	126°	126°	4500	JOKEK 2.2 NM to RW12	4600 ORECA
GP 3.00° TCH 47		306°	126°	126°	4500	*1.1 NM to RW12	*LNAV only
		6.1 NM	2.6 NM	1.1 NM	1.1 NM		
CATEGORY	A	B	C	D			
LPV DA	3141-1 250 (300-1)						
LNAV/VNAV DA	3184-1 293 (300-1)						
LNAV MDA	3280-1 389 (400-1)						3280-1¼ 389 (400-1¼)
CIRCLING	3280-1 389 (400-1)	3360-1 469 (500-1)	3360-1½ 469 (500-1½)	3460-2 569 (600-2)			

NC-2, 28 FEB 2019 to 28 MAR 2019

NC-2, 28 FEB 2019 to 28 MAR 2019



**RNAV (GPS) RWY 12, AMDT 0A
GARDEN CITY, KS
GARDEN CITY RGNL, (KGCK)
LNAV FINAL, CIRCLING 100K**