

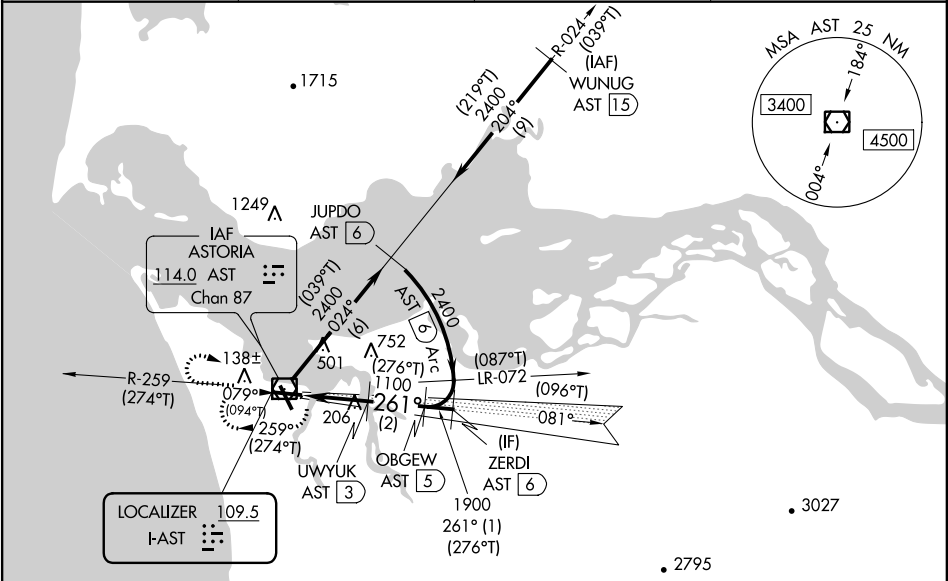
<b>Flight Procedure Tracking Form</b>		<b>Action:</b> FLIGHT CHECK	<b>Task Type:</b> IAP	<b>Date Open:</b> 05/07/2018	<b>Task #:</b> 2015052818062406006	<b>Request #:</b> 20150528180624
<b>Procedure:</b> COPTER LOC RWY 26 AMDT 2				<b>Airport ID:</b> KAST	<b>Airport:</b> ASTORIA RGNL	<b>Reimbursable #:</b> NO
<b>City:</b> ASTORIA	<b>ST:</b> OR	<b>GPS #:</b>	<b>Estimated Chart Date:</b> 07/19/2018		<b>FICO #:</b>	
<b>Fac ID:</b> AST		<b>Fac. Type:</b> ILS			<b>Specialist:</b> LIAM DONAHUE	
<b>Procedure Review</b>						
	<b>Rec'd</b>	<b>Rel'd</b>	<b>Full Name</b>	<b>Comments</b>		
<b>Lead:</b>	01/19/2018					
<b>QA:</b>			Wilson 5/17/2018			
<b>Liaison:</b>						
<b>Procedure Comments:</b>			ENROUTE-NON	<b>Remark Type:</b> INFORMATION		
<p>ASSIGNED MAG/VAR:  KAST: OLD 19E-NEW 15E.  AST VOR/DME: OLD 19E-NEW 15E.  AST LOC: OLD 19E-NEW 15E.  PENDING DATA USED FOR KAST AIRPORT.  PENDING DATA USED FOR AST VOR/DME.  PENDING DATA USED FOR AST LOC.</p> <p>CONTACT: DON LANIER, AJV, 5431 MANAGER, 405.954-8242</p>						

LOC I-AST <b>109.5</b>	APP CRS <b>261°</b>	Rwy Idg TDZE Apt Elev	<b>5081</b> <b>14</b> <b>9</b>
---------------------------	------------------------	-----------------------------	--------------------------------------

COPTER LOC RWY 26  
ASTORIA RGNL (AST)

DME required. DME from AST VOR/DME. Simultaneous reception of I-AST and NA AST DME required. For inop ALS increase visibility to 1 SM.	MALSR 	MISSED APPROACH: Climb to 1500 then climbing right turn to 2400 direct AST VOR/DME and hold.
---	-----------	--

ASOS <b>135.375</b>	SEATTLE CENTER <b>124.2 317.6</b>	MC MINNVILLE RADIO <b>122.3</b>	UNICOM <b>122.8 (CTAF)</b>
------------------------	--------------------------------------	------------------------------------	-------------------------------



PROTOTYPE-NOT FOR NAVIGATION

ELEV 9	TDZE 14
CATEGORY	COPTER
H-LOC 26	460-3/4 446 (500-3/4)

# INFORMATION ONLY

ASTORIA, OREGON

AL-24 (FAA)

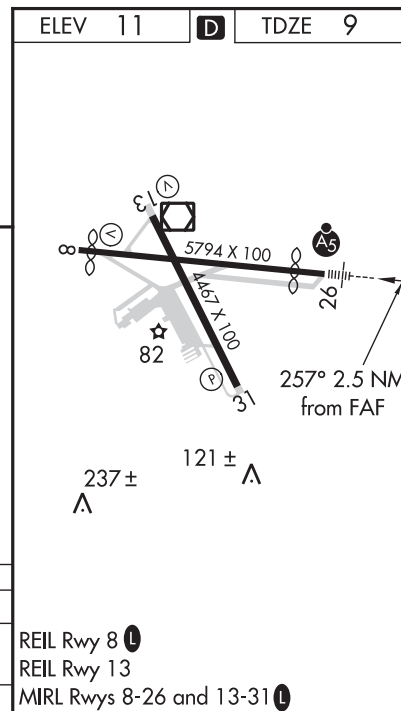
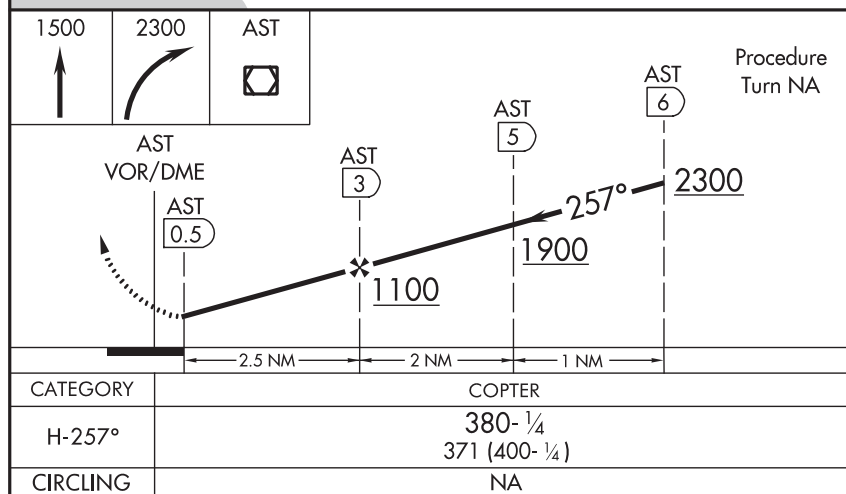
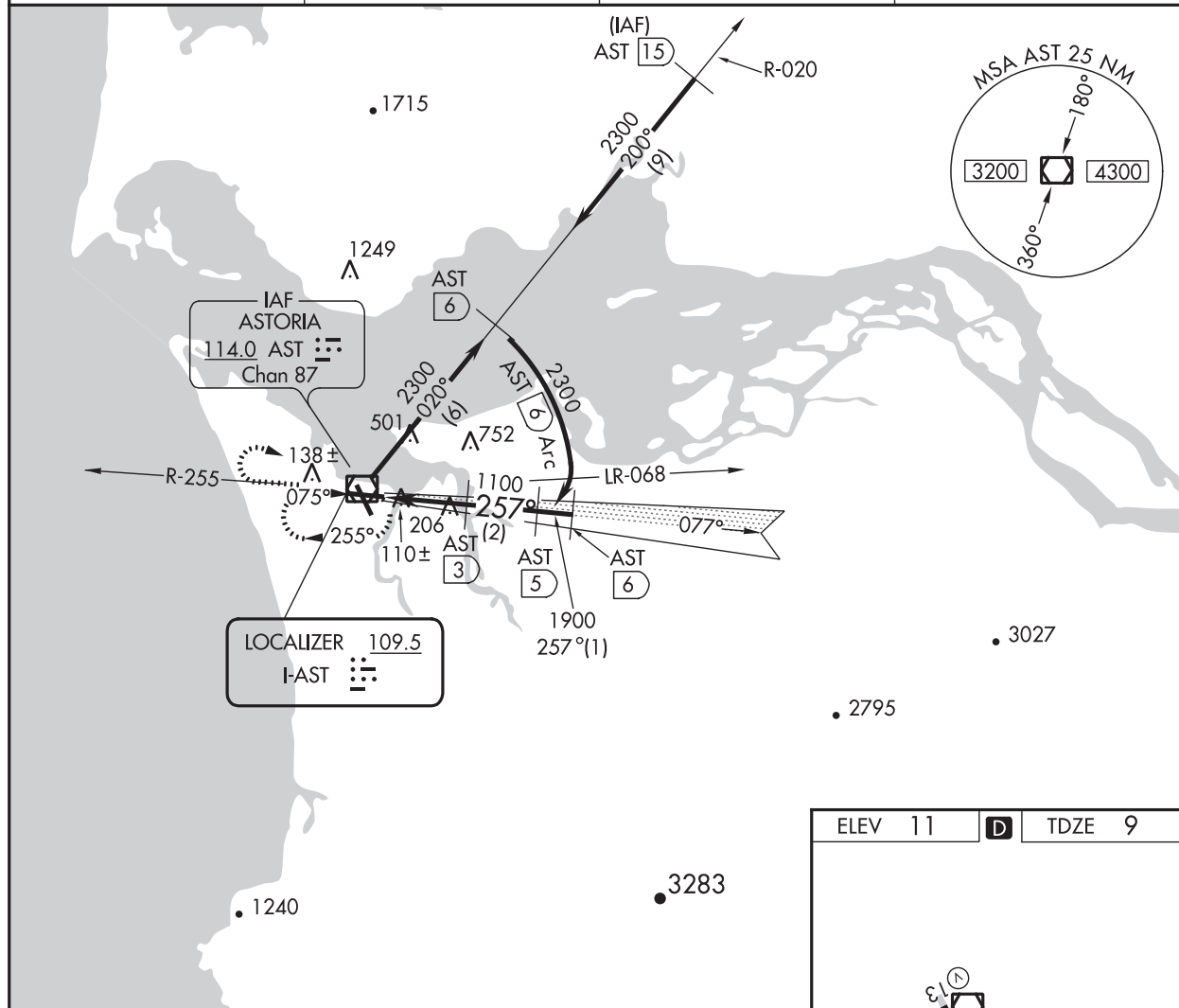
18032

LOC I-AST <b>109.5</b>	APP CRS <b>257°</b>	Rwy Idg TDZE Apt Elev	<b>N/A</b> <b>9</b> <b>11</b>
---------------------------	------------------------	-----------------------------	-------------------------------------

## COPTER LOC/DME 257° ASTORIA RGNL (AST)

<p><b>NA</b></p> <p>DME from AST VOR/DME. Simultaneous reception of I-AST and AST VOR/DME required. Increase visibility to ½ mile for inoperative MALS.</p>	<p>MISSED APPROACH: Climb to 1500 then climbing right turn to 2300 direct AST VOR/DME and hold.</p>
---	---

ASOS <b>135.375</b>	SEATTLE CENTER <b>124.2 317.6</b>	MC MINNVILLE RADIO <b>122.3</b>	UNICOM <b>122.8 (CTAF)</b>
------------------------	--------------------------------------	------------------------------------	-------------------------------



ASTORIA, OREGON  
Amdt 1 25AUG88

46°09'N-123°53'W

## ASTORIA RGNL (AST) COPTER LOC/DME 257°

NW-1, 26 APR 2018 to 24 MAY 2018

NW-1, 26 APR 2018 to 24 MAY 2018

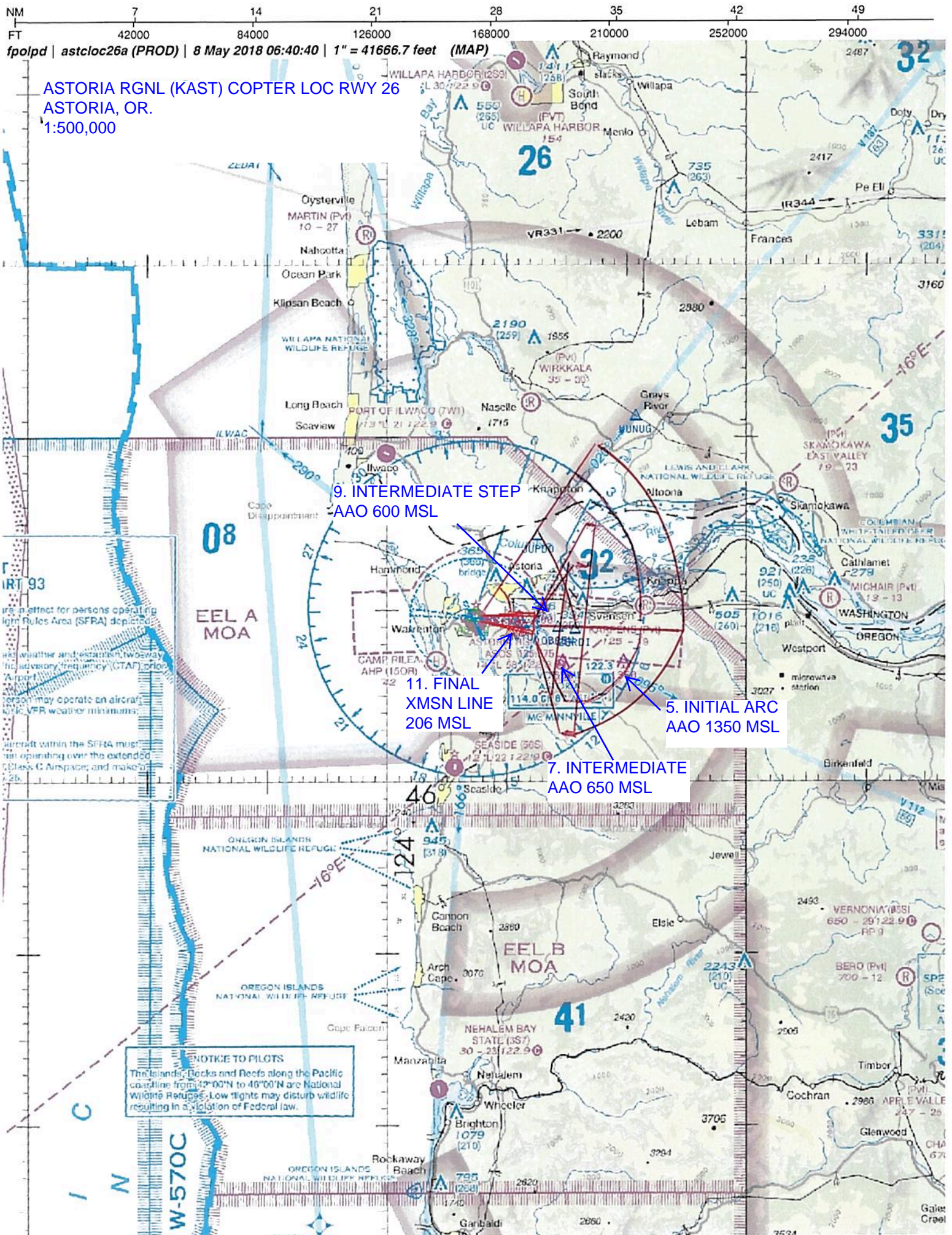


ASTORIA RGNL (KAST) COPTER LOC RWY 26  
ASTORIA, OR.  
1:500,000

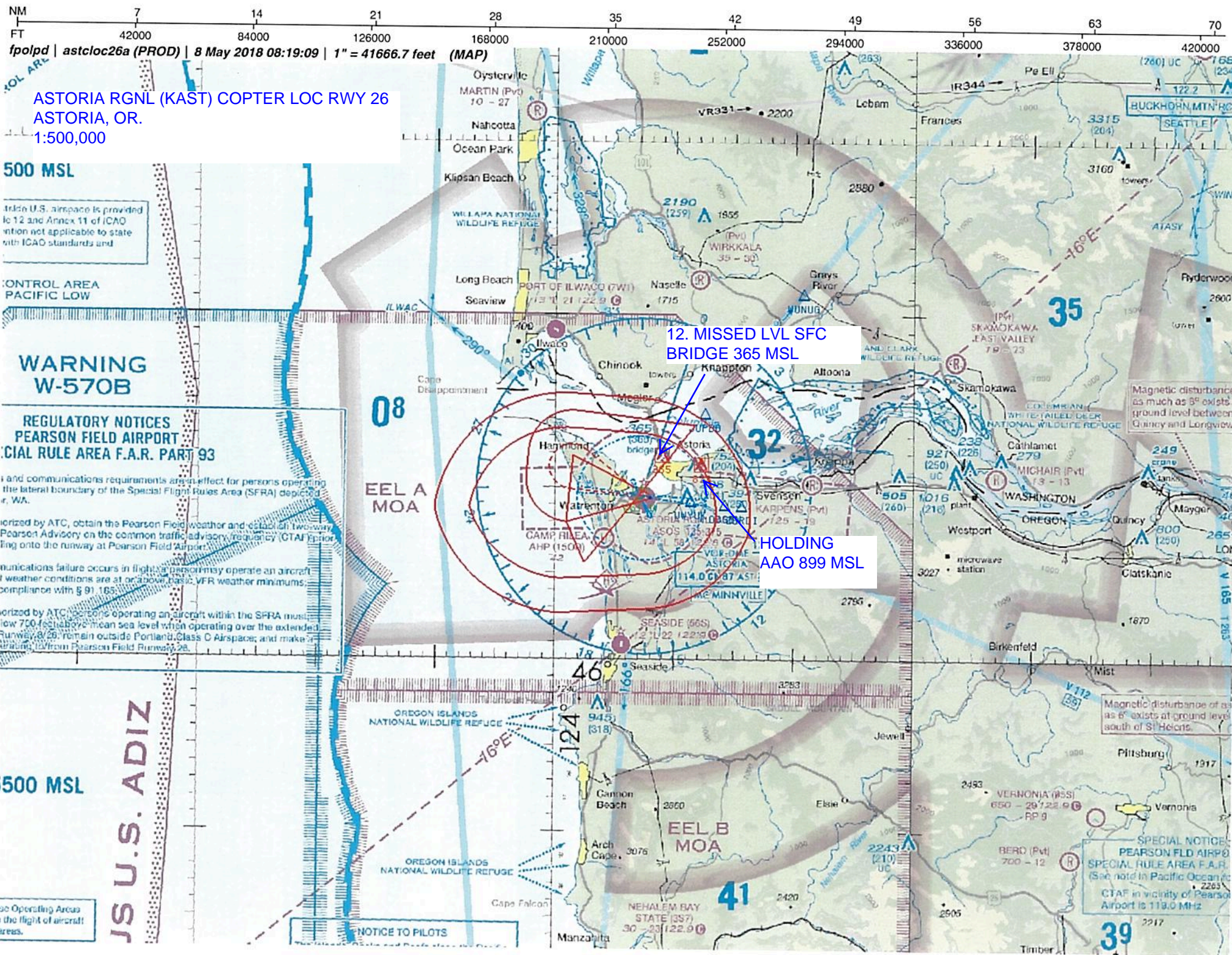
1. INITIAL  
AAO 1400 MSL

**NOTICE TO PILOTS**  
The Islands, Rocks and Reefs along the Pacific coastline from 42°00'N to 46°00'N are National Wildlife Refuges. Low flights may disturb wildlife resulting in a violation of Federal law.

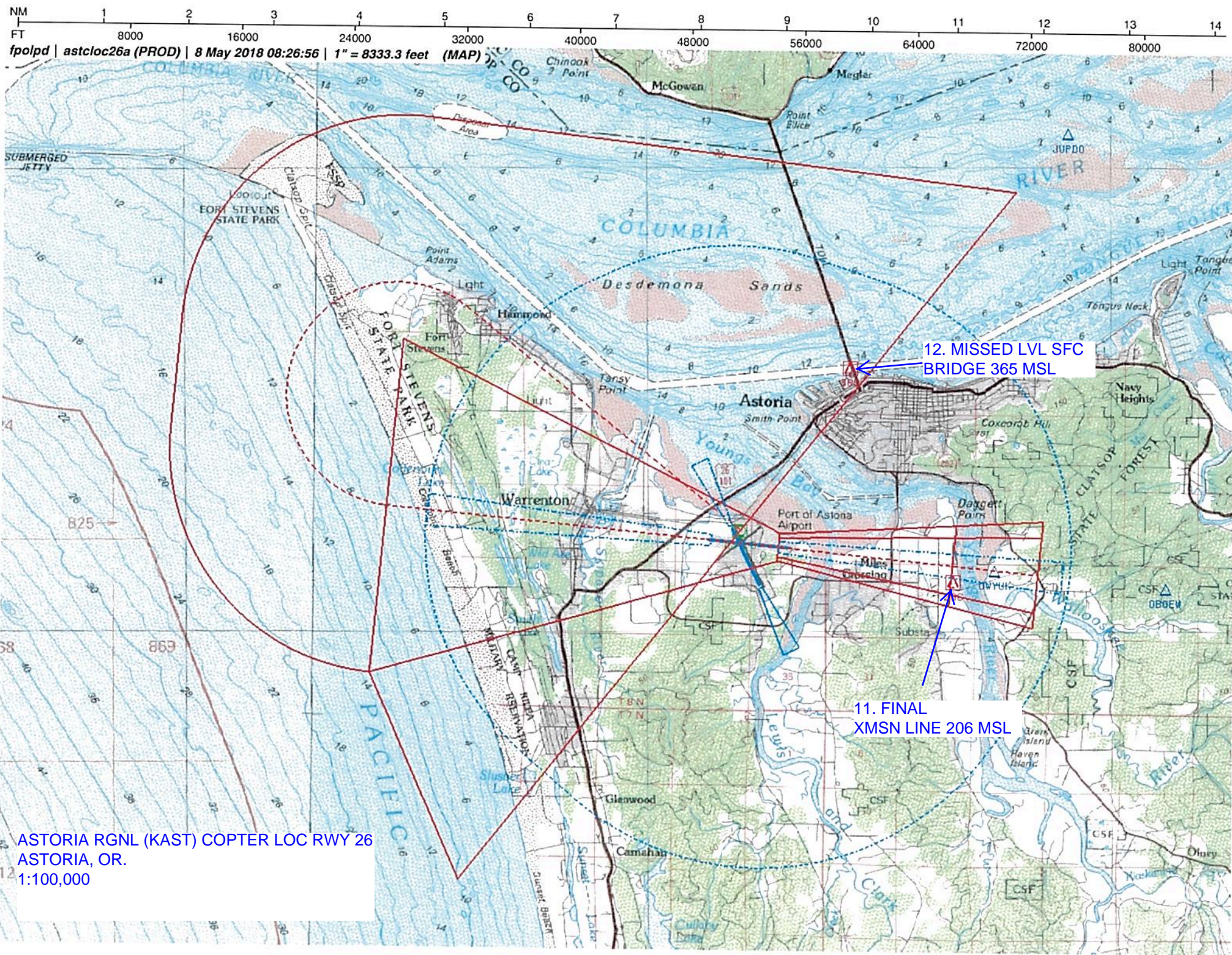












12. MISSED LVL SFC  
BRIDGE 365 MSL

11. FINAL  
XMSN LINE 206 MSL

ASTORIA RGNL (KAST) COPTER LOC RWY 26  
ASTORIA, OR.  
1:100,000