


Flight Procedure Tracking Form		Action: AMENDMENT	Task Type: IAP	Date Open: 09/22/2015	Task #: 2015052118183706003	Request #: 20150521181837
Procedure: ILS OR LOC Y RWY 10R AMDT 12A			Airport ID: KBOI	Airport: BOISE AIR TERMINAL/GOWEN FLD		Reimbursable #: NO
City: BOISE	ST: ID	GPS #:	Estimated Chart Date: 12/07/2017		FICO #:	
Fac ID: BOI		Fac. Type: ILS			Specialist: STEVEN OWNBEY	
Procedure Review						
	Rec'd	Rel'd	Full Name	Comments		
Lead:	06/14/2017					
QA:						
Liaison:						
Procedure Comments: ENROUTE-NON Remark Type: INFORMATION						
ABREVATED AMENDMENT: FLIGHT INSPECTION REVIEW NOT REQUIRED - PROCESSED IAW FLIGHT INSPECTION TEAM (AJW-333) MEMO, MAY 30, 2017 ATTACHED FORMS: 8260-3, AND 8260-9. ASSIGNED MAG VAR, KBOI: OLD 15E - NEW 13E CONTACT: BEVERLY BORDY, (405) 954-8293 OR DON LANIER, (405) 954-824 10/25/2017: THIS IS A CORRECTED COPY ON THE FORM APPORVED ON 8/30/2017 1. CHANGED USTIK LOM/BOI 5.39 DME TO USTIK LOM/I-BOI 5.39 DME IN TERMINAL ROUTES AND LINE 3 AND 4 ON PG 1 OF 8260-3						

OLD FIG

BOISE, IDAHO

AL-57 (FAA)

17117

LOC/DME I-BOI 111.1 Chan 48	APP CRS 100°	Rwy Idg 9763 TDZE 2836 Apt Elev 2871	10R 10000	10L 2844
---	------------------------	--	---------------------	--------------------

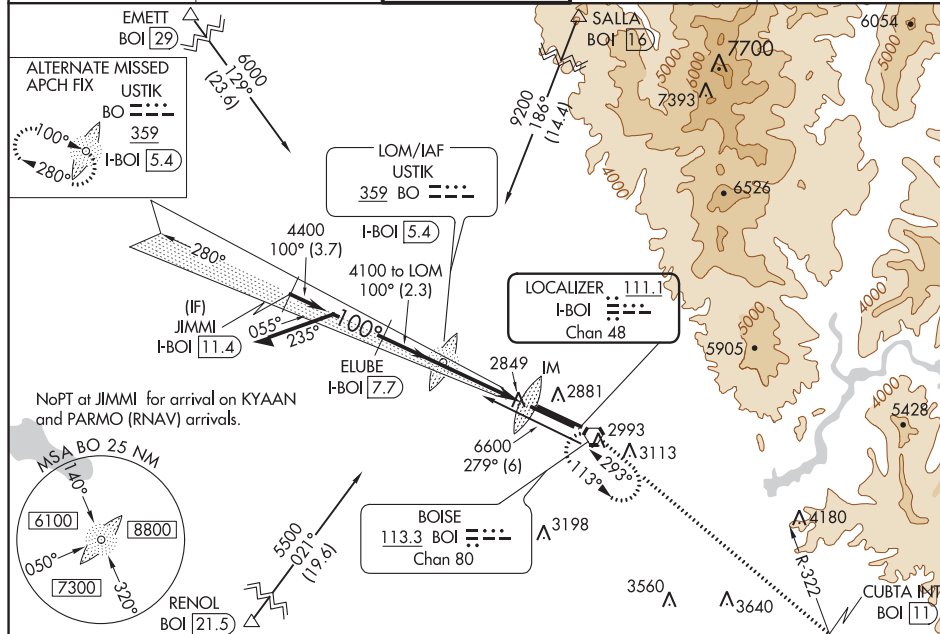
ILS or LOC RWY 10R BOISE AIR TERMINAL/GOWEN FIELD (BOI)

For inop ALSF-2, increase S-LOC Cat C and D visibilities to 5500.
Circling NA north of Rwy 10L/28R.

ALSF-2 Rwy 10R

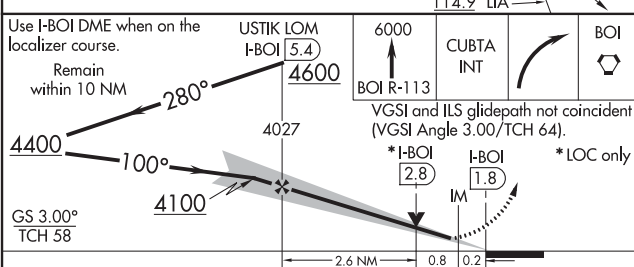
MISSED APPROACH: Climb to 6000 on BOI VORTAC R-113 to CUBTA INT/BOI 11 DME, and right turn direct BOI VORTAC and hold.

D-ATIS 123.9 290.4	BIG SKY APP CON 119.6 269.4	BOISE TOWER 118.1 257.8	GND CON 121.7 348.6	CLNC DEL 125.9 323.2
------------------------------	---------------------------------------	-----------------------------------	-------------------------------	--------------------------------



ELEV 2871	TDZE 10R 2836
	TDZE 10L 2844

ADF or DME REQUIRED



CATEGORY	A	B	C	D
S-ILS 10R	3036/18 200 (200-½)			
S-LOC 10R	3200/24	364 (400-½)	3200/35	364 (400-¾)
SIDESTEP RWY 10L	3220-1	376 (400-1)	3220-1½	3220-2
			376 (400-1½)	376 (400-2)
CIRCLING	3440-1	569 (600-1)	3740-2½	3820-3
			869 (900-2½)	949 (1000-3)

BOISE, IDAHO

Amdt 12 10DEC15

43°34'N-116°13'W

BOISE AIR TERMINAL/GOWEN FIELD (BOI)

ILS or LOC RWY 10R

NW-1, 22 JUN 2017 to 20 JUL 2017

NW-1, 22 JUN 2017 to 20 JUL 2017

OLD FIG

17117

ILS RWY 10R (SA CAT I)
BOISE AIR TERMINAL/GOWEN FIELD (BOI)

Requires specific OPSPEC, MSPEC, or LOA approval and use of HUD to DH.

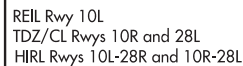
MISSED APPROACH: Climb to 6000 on BOI VORTAC R-113 to CUBTA INT/BOI 11 DME, and right turn direct BOI VORTAC and hold.

D-ATIS 123.9 290.4	BIG SKY APP CON 119.6 269.4	BOISE TOWER 118.1 257.8	GND CON 121.7 348.6	CLNC DEL 125.9 323.2
-----------------------	--------------------------------	----------------------------	------------------------	-------------------------



NW-1, 22 JUN 2017 to 20 JUL 2017

ELEV 2871	D	TDZE 2836
-----------	----------	-----------

BOISE AIR TERMINAL/GOWEN FIELD (BOI)
ILS RWY 10R (SA CAT I)

43°34'N-116°13'W

OLD FIG

BOISE, IDAHO

AL-57 (FAA)

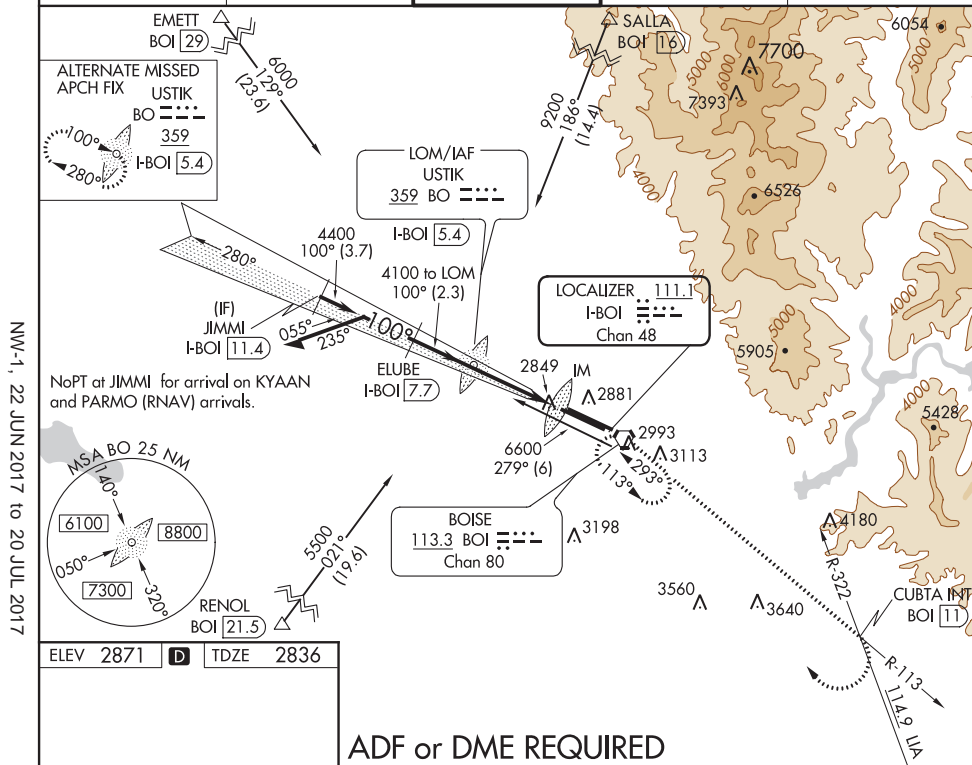
17117

LOC/DME I-BOI 111.1 Chan 48	APP CRS 100°	Rwy Idg TDZE Apt Elev 9763 2836 2871
---	------------------------	--

ILS RWY 10R (CAT II & III) BOISE AIR TERMINAL/GOWEN FIELD (BOI)

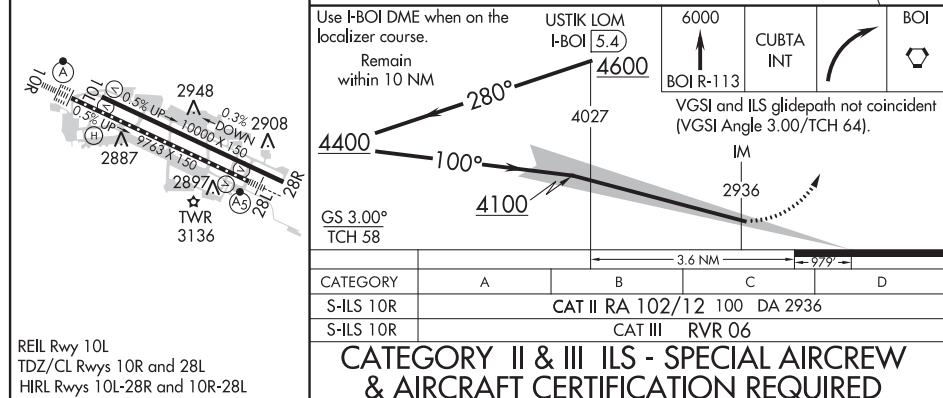
<p>⚠ CAT II: RVR 1000 authorized with specific OPSEC, MSPEC, or LOA approval and use of autoland or HUD to touchdown.</p> <p>❄ -23°C/-9°F</p>	<p>ALSIF-2</p> <p>Ⓜ</p>	<p>MISSED APPROACH: Climb to 6000 on BOI VORTAC R-113 to CUBTA INT/BOI 11 DME, and right turn direct BOI VORTAC and hold.</p>
---	--------------------------------	---

D-ATIS 123.9 290.4	BIG SKY APP CON 119.6 269.4	BOISE TOWER 118.1 257.8	GND CON 121.7 348.6	CLNC DEL 125.9 323.2
------------------------------	---------------------------------------	-----------------------------------	-------------------------------	--------------------------------



NW-1, 22 JUN 2017 to 20 JUL 2017

NW-1, 22 JUN 2017 to 20 JUL 2017



REIL Rwy 10L
TDZ/CL Rwy 10R and 28L
HRL Rwy 10L-28R and 10R-28L

BOISE, IDAHO
Amdt 12 10DEC15

BOISE AIR TERMINAL/GOWEN FIELD (BOI)
ILS RWY 10R (CAT II & III)

43°34'N-116°13'W