

<b>Flight Procedure Tracking Form</b>		<b>Action:</b> FLIGHT CHECK	<b>Task Type:</b> IAP	<b>Date Open:</b> 01/04/2016	<b>Task #:</b> 2015051526821901004	<b>Request #:</b> 20150515268219
<b>Procedure:</b> APPROACH RNAV (GPS) RWY 28 ORIG-B				<b>Airport ID:</b> K5G0	<b>Airport:</b> LE ROY	<b>Reimbursable #:</b> NO
<b>City:</b> LE ROY	<b>ST:</b> NY	<b>GPS #:</b>	<b>Estimated Chart Date:</b> 09/15/2016		<b>FICO #:</b>	
<b>Fac ID:</b> N/A		<b>Fac. Type:</b>			<b>Specialist:</b>	
<b>Procedure Review</b>						
	<b>Rec'd</b>	<b>Rel'd</b>	<b>Full Name</b>	<b>Comments</b>		
<b>Lead:</b>	06/04/2015					
<b>QA:</b>						
<b>Liaison:</b>						
<b>Procedure Comments:</b>			ENROUTE-NON	<b>Remark Type:</b> INFORMATION		
<p>VGSI MITIGATION FOR RWY 28 AND CIRCLING PROCEDURES.</p> <p>SEE MARLON J ROBINSON 405-954-3636, AJV 5411</p>						

[Print](#)

Project Name: 5G0 - AFS-400 APVD VGSI MITIGATION FOR NIGHT CIRCLING RW28

Project Reason: 5G0 - AFS-400 APPROVED USE OF VGSI MITIGATION FOR CIRCLING RW28 AT NIGHT. RWY 10 NIGHT LANDING NA.

Last Updated By: rocky patterson

Last Updated At: 2016-07-12 19:17:37.116772

Status: Verified

*6/5296*  
IFDC ~~XXXX~~ 5G0 IAP LE ROY, LE ROY, NY. RNAV (GPS) RWY 28, ORIG-A... DELETE NOTE: PROCEDURE NA AT NIGHT. CHART NOTE: STRAIGHT-IN RWY 28 NA AT NIGHT, CIRCLING RWY 10 NA AT NIGHT. CHART NOTE: WHEN CIRCLING TO RWY 28 AT NIGHT, OPERATIONAL VGSI REQUIRED, REMAIN ON OR ABOVE VGSI GLIDEPATH UNTIL THRESHOLD.. THIS IS RNAV (GPS) RWY 28, ORIG-B. 1607121917-PERM



LE ROY, NEW YORK

AL-6839 (FAA)

14345

WAAS CH <b>69330</b> <b>W28A</b>	APP CRS <b>284°</b>	Rwy Idg TDZE Apt Elev	<b>3854</b> <b>778</b> <b>780</b>
--	------------------------	-----------------------------	---

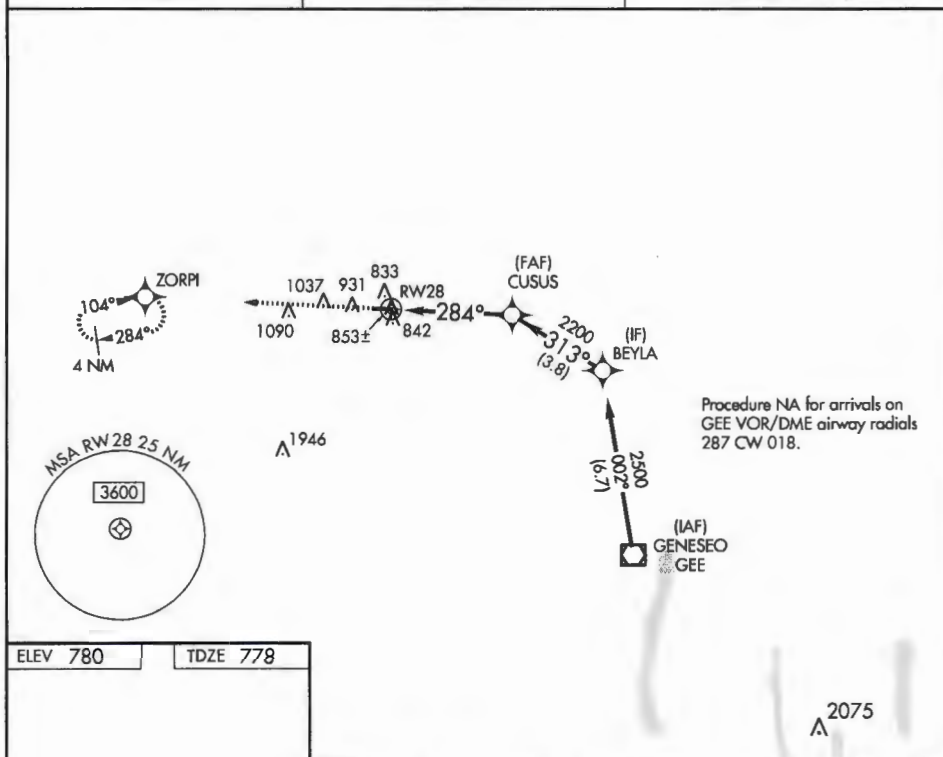
**RNAV (GPS) RWY 28**

LE ROY (5G0)

<b>NA</b> Use Greater Rochester altimeter setting. DME/DME RNP-0.3 NA. Procedure NA at night. Helicopter visibility reduction below 1 SM NA.	MISSED APPROACH: Climb to 3000 direct ZORPI and hold.
---	--

GREATER ROCHESTER INTL ASOS <b>124.825</b>	ROCHESTER APP CON <b>123.7 322.3</b>	UNICOM <b>122.8 (CTAF) 0</b>
---	---	---------------------------------

NE-2, 23 JUN 2016 to 21 JUL 2016



NE-2, 23 JUN 2016 to 21 JUL 2016

ELEV 780

TDZE 778

A 2075

3000

ZORPI

Descent angle NA.

284° to  
RW28

3854 X 60

BEYLA

2500

CUSUS

313°

2200

RW28

284°

4.3 NM

3.8 NM

CATEGORY

A

B

C

D

LP MDA

1180-1 402 (400-1)

NA

LNAV MDA

1240-1 462 (500-1)

NA

CIRCLING

1360-1 580 (600-1)

1420/640 NA 1

MIRL Rwy 10-28  
REIL Rwy 10 and 28

LE ROY, NEW YORK  
Orig-A 11DEC14

42°59'N-77°56'W

LE ROY (5G0)  
**RNAV (GPS) RWY 28**