

<b>Flight Procedure Tracking Form</b>		<b>Action:</b> FLIGHT CHECK	<b>Task Type:</b> IAP	<b>Date Open:</b> 08/28/2015	<b>Task #:</b> 2015050428183102004	<b>Request #:</b> 20150504281831
<b>Procedure:</b> VOR RWY 13 AMDT 9B			<b>Airport ID:</b> KPKD	<b>Airport:</b> PARK RAPIDS MUNI-KONSHOK FIELD		<b>Reimbursable #:</b> NO
<b>City:</b> PARK RAPIDS	<b>ST:</b> MN	<b>GPS #:</b>	<b>Estimated Chart Date:</b> 06/23/2016		<b>FICO #:</b>	
<b>Fac ID:</b> NOCHANGE		<b>Fac. Type:</b>			<b>Specialist:</b> JEFFREY ROBINSON	
<b>Procedure Review</b>						
	<b>Rec'd</b>	<b>Rel'd</b>	<b>Full Name</b>	<b>Comments</b>		
<b>Lead:</b>	08/28/2015					
<b>QA:</b>				4 3/24CTabaka		
<b>Liaison:</b>						
<b>Procedure Comments:</b>			<b>Remark Type:</b> INFORMATION			
<p>TURF RWY 17, 35 HAS BEEN PAVED, MARKED, LIGHTED, AND REDESIGNATED RWY 18, 36.</p> <p>PKD VOR/DME MAGVAR: OLD 4E/1995, NEW 1E/2020 (2.65 DEGREE VARIANCE UNROUNDED).</p> <p>FLT CHK: 4D ACCURACY CODE EVAL REQUESTED SEE 8260-9.</p> <p>PENDING DATA USED FOR RWY 18, 36.</p> <p>CONTACT: GEORGE GONZALEZ / JACOB POWERS, 405.954.2884 / 8702.</p>						

QUALITY

CHECKED

QUALITY  
15  
CHECKED

PARK RAPIDS, MINNESOTA

AL-5298 (FAA)

FIG

VOR/DME PKD <b>110.6</b> Chan <b>43</b>	APP CRS <b>136°</b>	Rwy Idg TDZE Apt Elev	<b>5497</b> <b>1445</b> <b>1445</b>
---	------------------------	-----------------------------	---

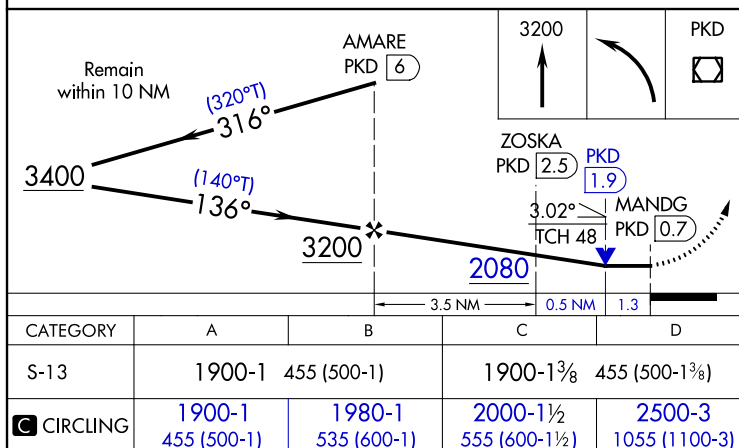
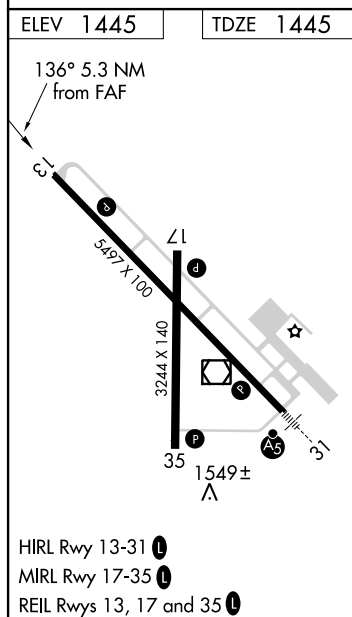
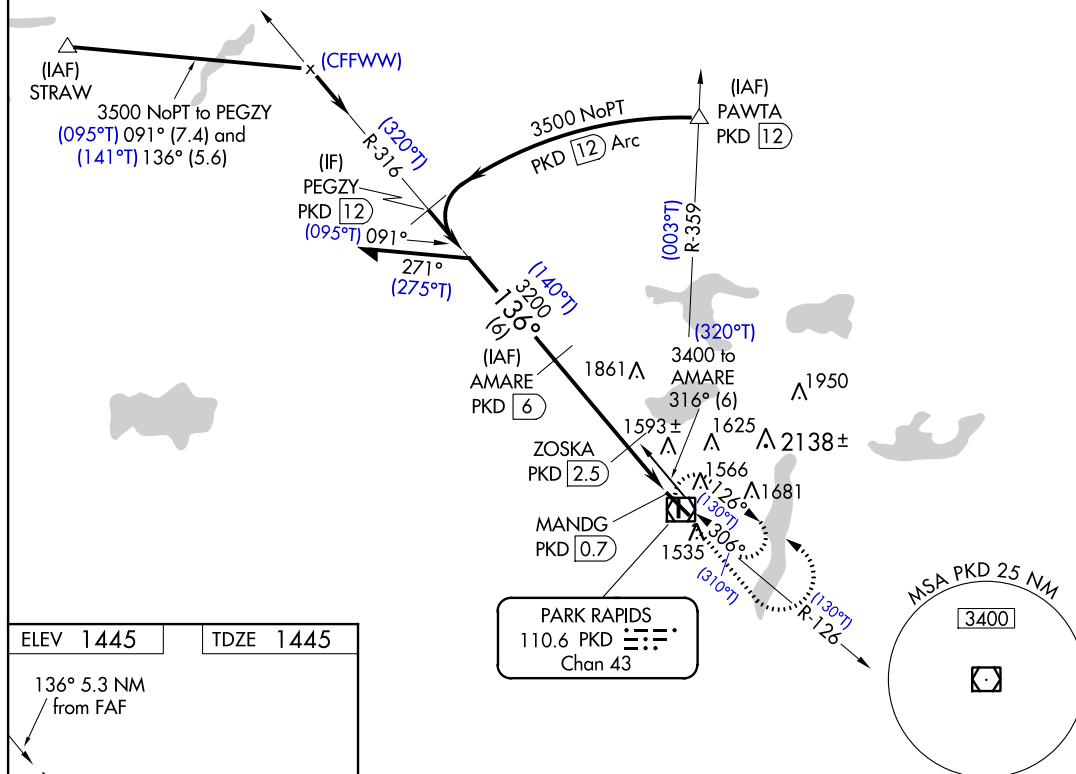
## VOR RWY 13

PARK RAPIDS MUNI-KONSHOK FIELD (PKD)

<p>⚠ Circling Rwy 18, 36 NA at night. Helicopter visibility reduction below <math>\frac{3}{4}</math> SM NA.</p> <p>⚠ VDP NA when using Wadena altimeter setting. When local altimeter setting not received, use Wadena altimeter setting and increase all MDA 80 feet; increase S-13 Cat C/D visibility <math>\frac{1}{8}</math> mile and increase Circling Cat C visibility <math>\frac{1}{4}</math> mile. DME required.</p>	MISSED APPROACH: Climb to 3200 then left turn direct PKD VOR/DME and hold.
---	--

ASOS  
**110.6**PRINCETON RADIO  
**122.1R**UNICOM  
**123.0 (CTAF) 1**

PROTOTYPE - NOT FOR NAVIGATION



PARK RAPIDS, MINNESOTA

PARK RAPIDS MUNI-KONSHOK FIELD (PKD)

Amdt 9B FIG

46°54'N-95°04'W

VOR RWY 13

AUTOMATED AL-5298 VOR RWY 13

NC-1  
JAN 27, 2016  
COMPILER: LS  
REVIEWER:  
DBL CHKR:  
EFF: FIG

VOR/DME PKD <b>110.6</b> Chan <b>43</b>	APP CRS <b>136°</b>	Rwy Idg <b>5497</b> TDZE <b>1445</b> Apt Elev <b>1445</b>
---	------------------------	---

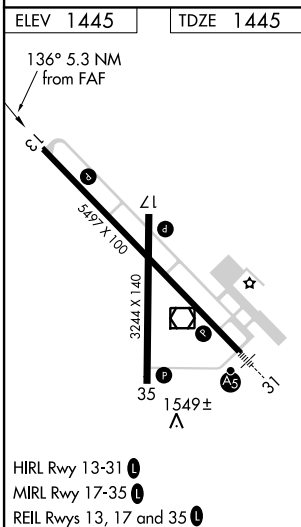
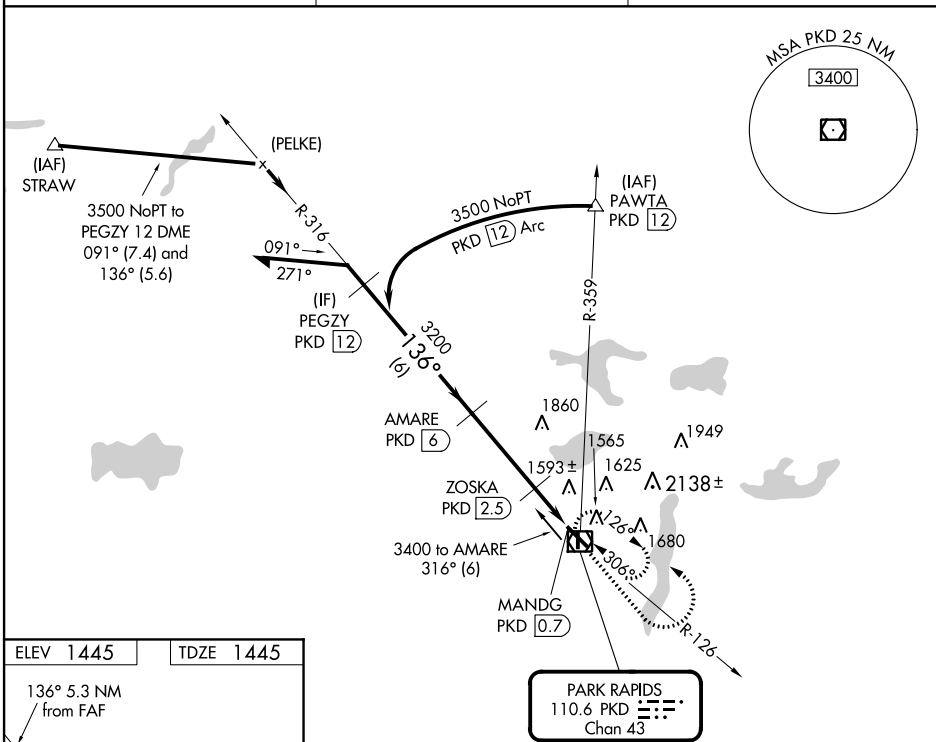
VOR/DME RWY 13

PARK RAPIDS MUNI-KONSHOK FIELD (PKD)

<b>T</b>	When VGSI inop, Straight-in/Circling Rwy 13 procedure NA at night. Visibility reduction by helicopters NA. When local altimeter setting not received, use Wadena altimeter setting and increase all MDA 80 feet and increase S-13 Cat C and D visibility $\frac{1}{2}$ mile. Circling to Rwy 17/35 NA at night.
----------	---

**MISSED APPROACH:** Climb to 3200 then left turn direct PKD VOR/DME and hold.

ASOS <b>110.6</b>	PRINCETON RADIO <b>122.1R</b>	UNICOM <b>123.0 (CTAF) ①</b>
----------------------	----------------------------------	---------------------------------



CATEGORY	A	B	C	D
S-13	1900-1	455 (500-1)	1900-1 $\frac{3}{8}$	455 (500-1 $\frac{3}{8}$ )
CIRCLING	1920-1	475 (500-1)	1920-1 $\frac{1}{2}$ 475 (500-1 $\frac{1}{2}$ )	2000-2 555 (600-2)

PARK RAPIDS, MINNESOTA

Amdt 9A 28MAY15

PARK RAPIDS MUNI-KONSHOK FIELD (PKD)

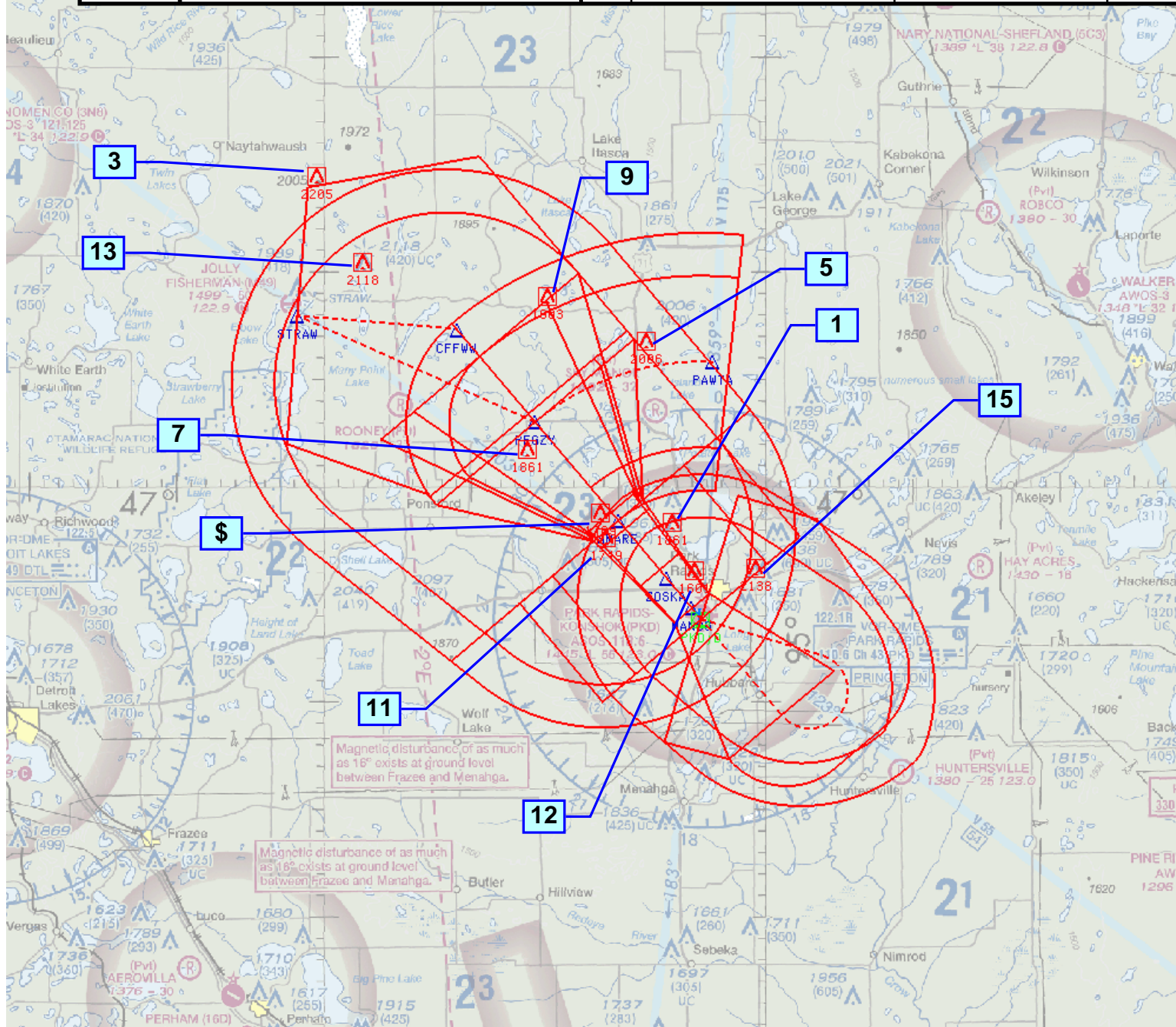
VOR/DME RWY 13

46°54'N-95°04'W

NC-1, 10 DEC 2015 to 07 JAN 2016

NC-1, 10 DEC 2015 to 07 JAN 2016

Airport ID:	PKD	FM 9 – ALL SEGMENTS		
Apt Name:	PARK RAPIDS MUNI-KONSHOK FIELD	No	SEGMENT	OBSSTRUCTION
City:	PARK RAPIDS	1	FEEDER	TOWER
State:	MN	3	INITIAL DR	AAO
Scale:	1:500,000	5	INITIAL ARC	TOWER
Proc ID:	VOR RWY 13	7	INTERMEDIATE (NO PT)	AAO
Amdt #:	9B	9	INTERMEDIATE PT	AAO
		11	FINAL: FAF – SDF	AAO
		12	FINAL: SDF – MAP	WINDMILL
		13	PROCEDURE TURN	TOWER
		15	MA LVL SFC / MA HOLD	TOWER
		\$	FINAL 289 OBSTACLE	AAO
				ELEV
				1861
				2205
				2006
				1861
				1903
				1749
				1601
				2118
				2138
				1769





NM 1 2 3 4 5 6 7 8 9 10  
FT 8000 16000 24000 32000 40000 48000 56000 64000

fpojkr | pkd\_vd13zz (PROD) | 7 Mar 2016 17:00:07 | 1" = 8333.3 feet (MAP)

Airport ID:	PKD	FM 9 – S-13 FINAL W/ CIRCLING			
Apt Name:	PARK RAPIDS MUNI-KONSHOK FIELD	No	SEGMENT	OBSTRUCTION	ELEV
City:	PARK RAPIDS	11	FINAL: FAF – SDF	AAO	1749
State:	MN	12	FINAL: SDF – MAP	WINDMILL	1601
Scale:	1:100,000	17	CIRCLING CAT A	TANK	1600
Proc ID:	VOR RWY 13	18	CIRCLING CAT B	TOWER	1625
Amdt #:	9B	19	CIRCLING CAT C	TOWER	1681
		15	CIRCLING CAT D	TOWER	2138
		15	MA LVL SFC / MA HOLD	TOWER	2138
		\$	FINAL 289 OBSTACLE	AAO	1769

