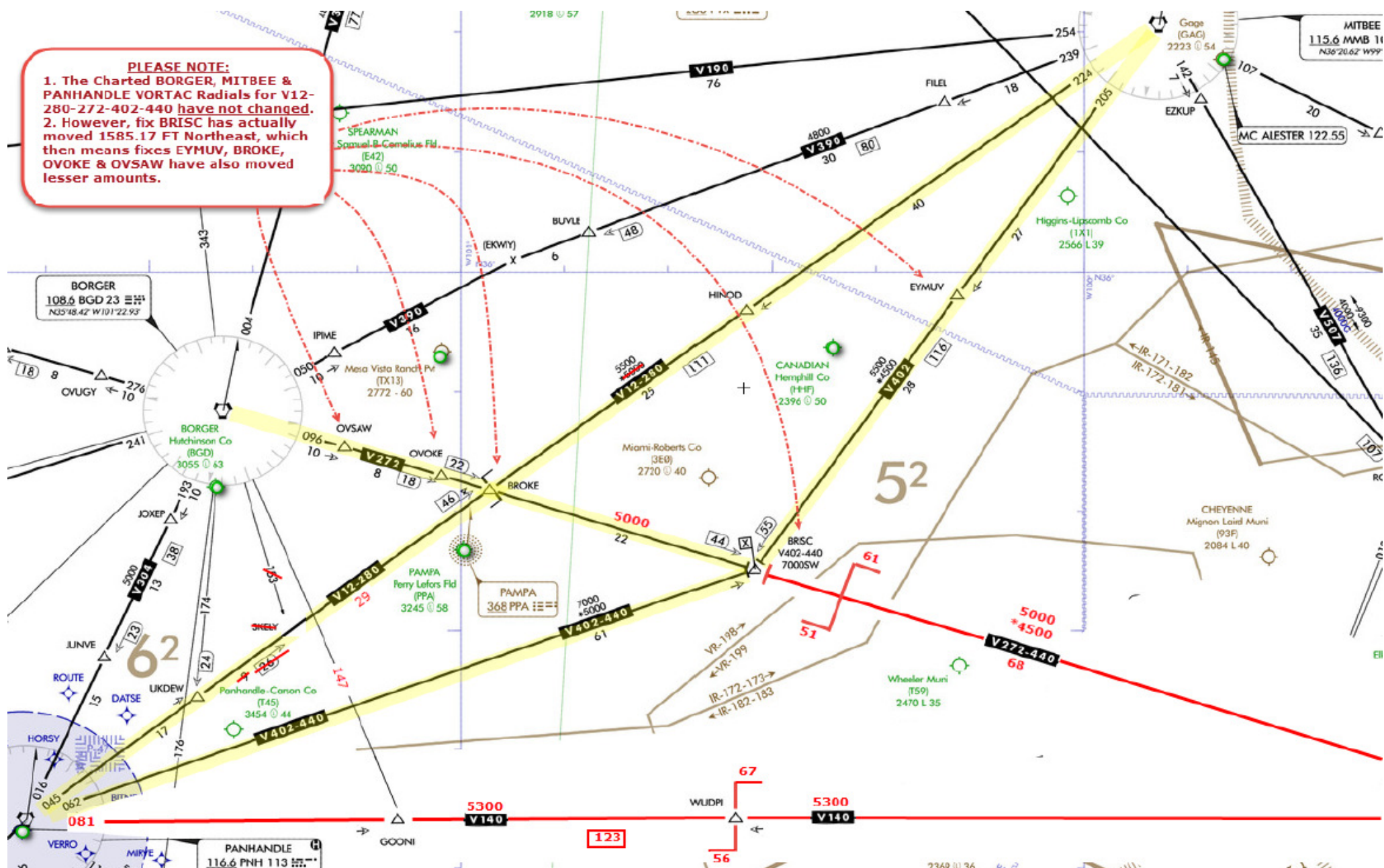
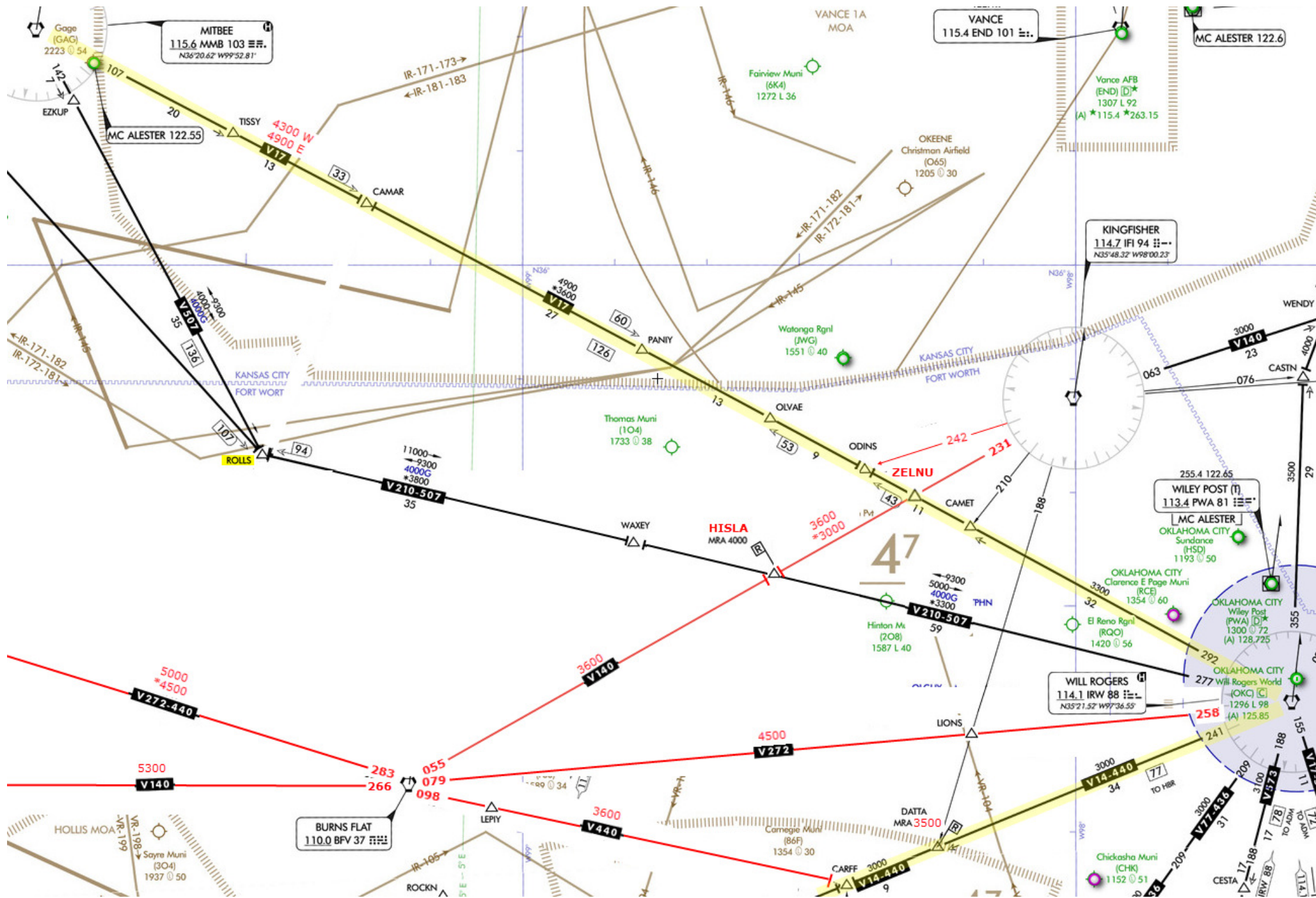


<b>Flight Procedure Tracking Form</b>		<b>Action:</b> AMENDMENT	<b>Task Type:</b> AWSEG	<b>Date Open:</b> 04/27/2015	<b>Task #:</b> 2015042726292401002	<b>Request #:</b> 20150427262924
<b>Procedure:</b> V 272 BORGER (BGD) TX TO WILL ROGERS (IRW) OK Y			<b>Airport ID:</b> TX	<b>Airport:</b>		<b>Reimbursable #:</b> NO
<b>City:</b>	<b>ST:</b> TX	<b>GPS #:</b>	<b>Estimated Chart Date:</b> 04/27/2017		<b>FICO #:</b>	
<b>Fac ID:</b> N/A		<b>Fac. Type:</b>		<b>Specialist:</b> DONALD LANIER		
<b>Procedure Review</b>						
	<b>Rec'd</b>	<b>Rel'd</b>	<b>Full Name</b>	<b>Comments</b>		
<b>Lead:</b>	01/15/2016	01/26/2017	DONALD LANIER			
<b>QA:</b>	01/26/2017	04/29/2016	JACOB POWERS			
<b>Liaison:</b>	04/29/2016	05/19/2016	MARY MCDONALD			
<b>Procedure Comments:</b>			ENROUTE	<b>Remark Type:</b> INFORMATION		
<p>REQUEST FC TABLETOP ONLY.</p> <p>SAYRE (SYO) VORTAC DECOMMISSIONING.</p> <p>AIRWAY STARTING POINT: 354825.46N-1012255.75W / BORGER (BGD) VORTAC, TX.</p> <p>ESV(S): (6) BURNS FLAT (BFV) VTAC (2), BORGER (BGD) VTAC (4).</p> <p>CONTACT: PATRICK MULQUEEN - SUPERVISOR - 405.954.4073.</p>						

1. The Charted BORGER, MITBEE & PANHANDLE VORTAC Radials for V12-280-272-402-440 have not changed.  
2. However, fix BRISC has actually moved 1585.17 FT Northeast, which then means fixes EYMU, BROKE, OVOKE & OVSAW have also moved lesser amounts.

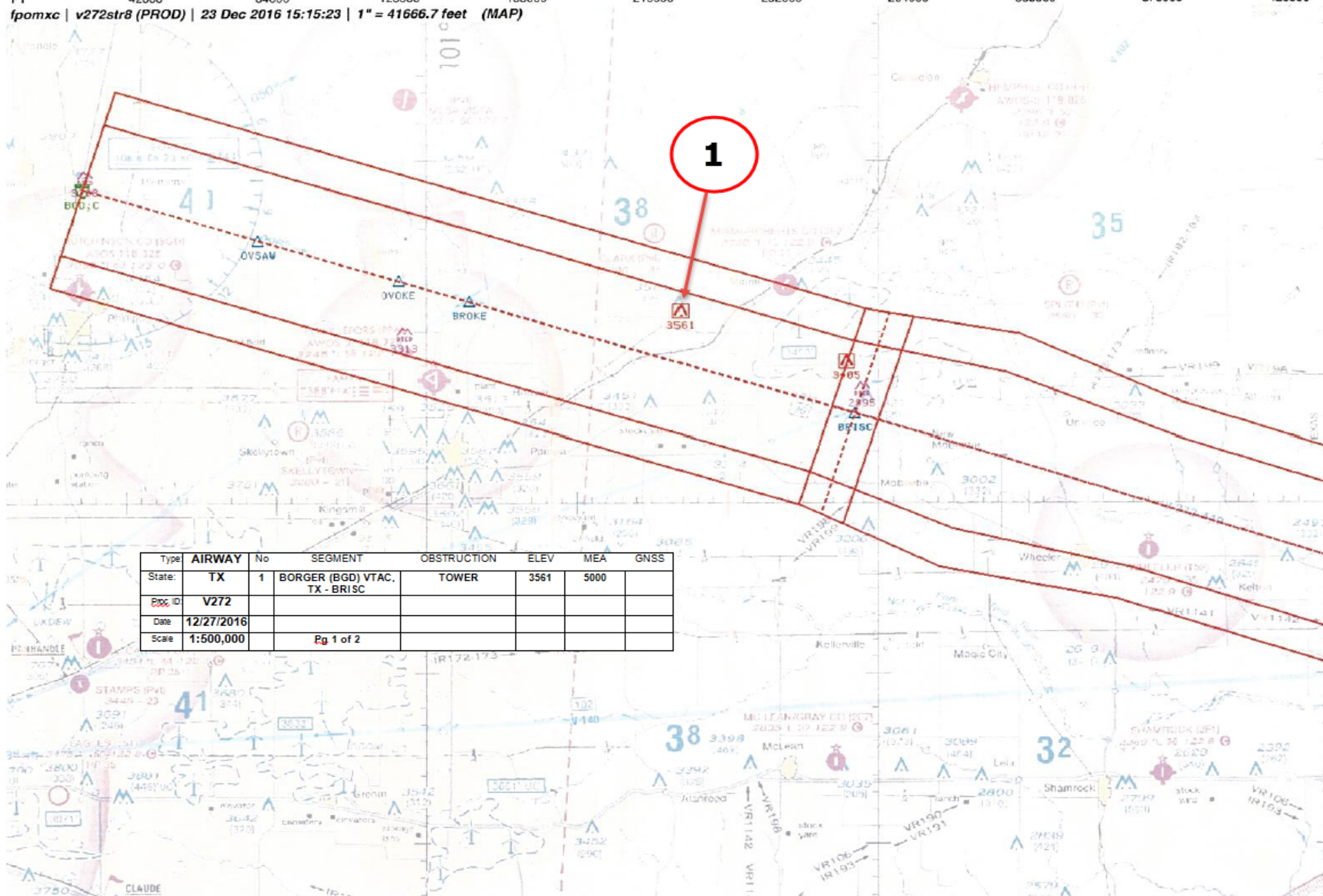






NM 7 14 21 28 35 42 49 56 63 70  
 FT 42000 84000 126000 168000 210000 252000 294000 336000 378000 420000

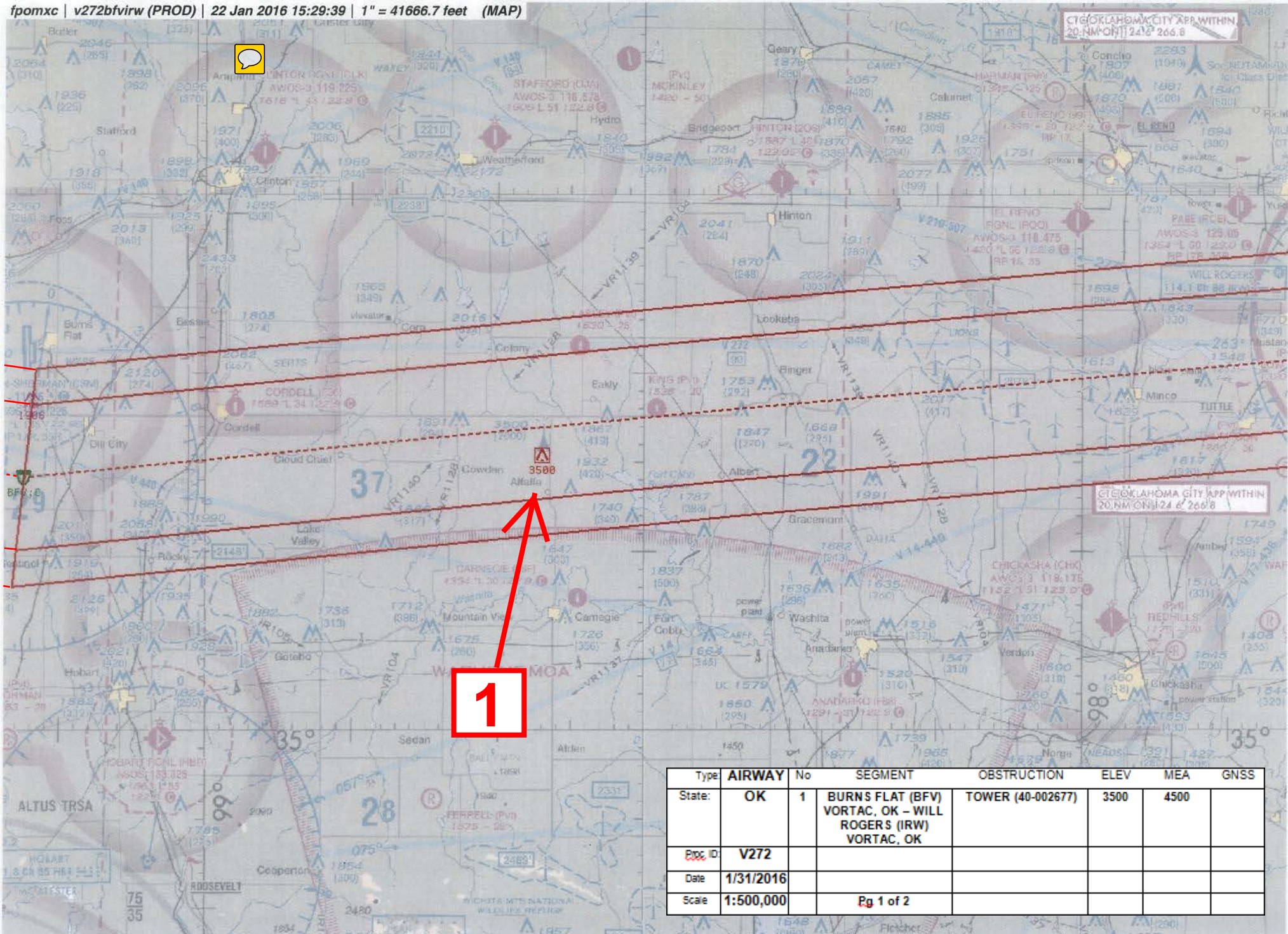
fpomxc | v272str8 (PROD) | 23 Dec 2016 15:15:23 | 1" = 41666.7 feet (MAP)



Type	AIRWAY	No	SEGMENT	OBSTRUCTION	ELEV	MEA	GNSS
State:	TX	1	BORGER (BGD) VTAC, TX - BRISC	TOWER	3561	5000	
Doc ID:	V272						
Date	12/27/2016						
Scale	1:500,000		Pg 1 of 2				

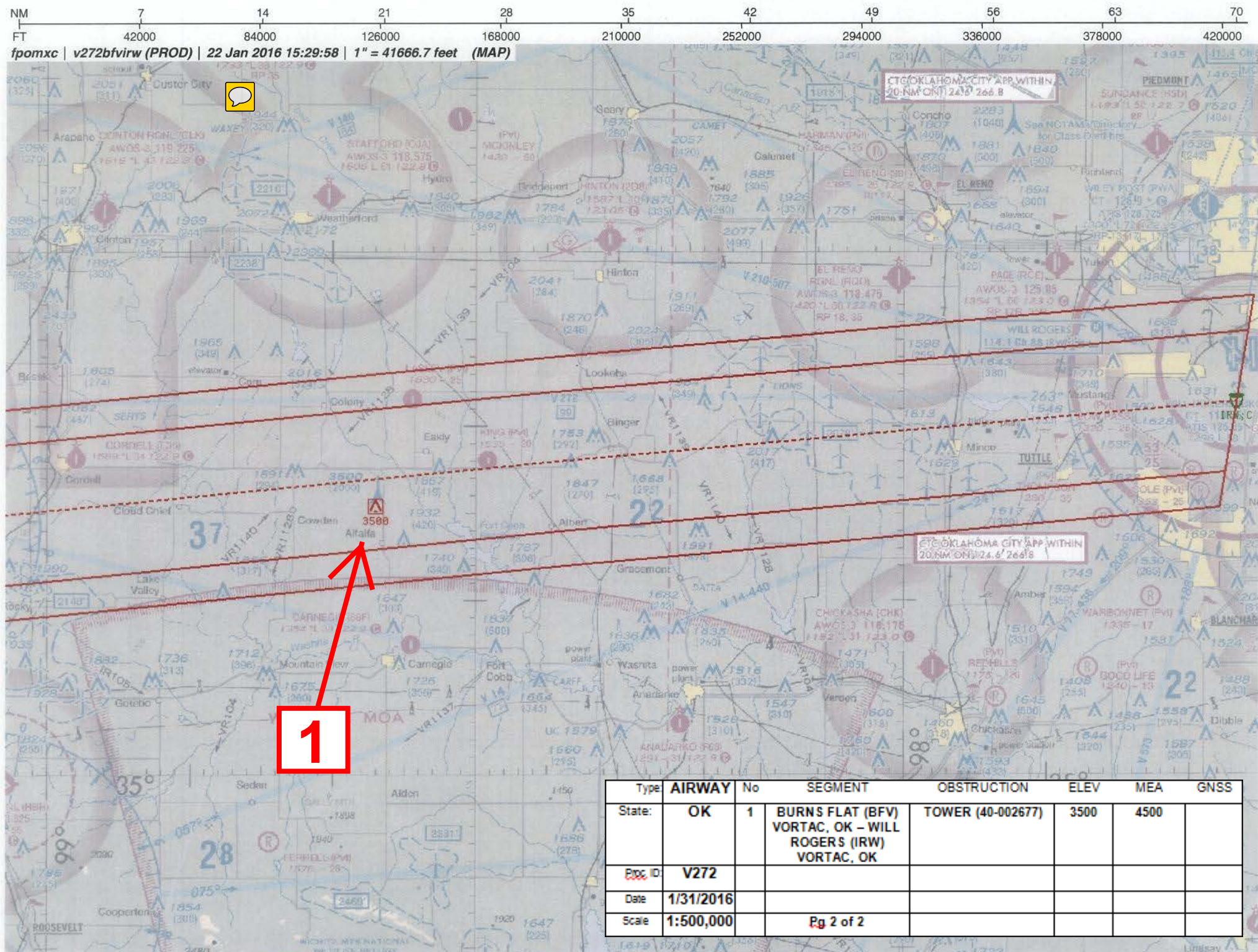






Type	AIRWAY	No	SEGMENT	OBSTRUCTION	ELEV	MEA	GNSS
State:	OK	1	BURNS FLAT (BFV) VORTAC, OK - WILL ROGERS (IRW) VORTAC, OK	TOWER (40-002677)	3500	4500	
Doc ID	V272						
Date	1/31/2016						
Scale	1:500,000		Pg 1 of 2				





NM 7 14 21 28 35 42 49 56 63 70  
FT 42000 84000 126000 168000 210000 252000 294000 336000 378000 420000  
fpomxc | v272bfvrv (PROD) | 22 Jan 2016 15:29:58 | 1" = 41666.7 feet (MAP)

1

Type	AIRWAY	No	SEGMENT	OBSTRUCTION	ELEV	MEA	GNSS
State:	OK	1	BURNS FLAT (BFV) VORTAC, OK – WILL ROGERS (IRW) VORTAC, OK	TOWER (40-002677)	3500	4500	
Proc ID:	V272						
Date	1/31/2016						
Scale	1:500,000		Pg 2 of 2				

## ESV Details

Originating Office :	Airspace Docket Number : 14-ASW-13	Request Type : Establish				
<b>Facility Data</b>						
Chart Name : BORGER V272 FIX BRISC	City : BORGER	Ident : BGD		State : TX		
Type/Class : L-VOR	Frequency : M108.6	Reference No.: 16041794				
<b>Expanded Service Volume Data: (Requesting Officer)</b>						
ESV ID	Radial 1	Radial 2	Distance	Minimum Altitude	Maximum Altitude	
FAA 762311-015	96	0	44	50	175	
Requirement: GRANDFATHERED: V272 FIX BRISC						
Signature: Ciarlone Mark		Routing Symbol: AJV-5412			Date: 04/01/2016	
<b>Expanded Service Volume Data: (FMO)</b>						
ESV ID	Radial 1	Radial 2	Distance	Minimum Altitude	Maximum Altitude	Action Type
FAA 762311-015	96	0	44	50	175	APPROVE
Requirement/Remarks: GRANDFATHERED: V272 FIX BRISCPEND FLT CHK @ REQ. DIST .& MIN ALT. CAPACITY STUDY REQ./INCREASED INTERROGATION LOAD MAY REDUCE TRANSPONDER REPLIES RESULTING IN LOSS OF DME SERVICE FOR SOME A/C						
Signature: Pape Gregory		Routing Symbol:			Date: 04/04/2016	
<b>Expanded Service Volume Data: (Super FMO)</b>						
ESV ID	Radial 1	Radial 2	Distance	Minimum Altitude	Maximum Altitude	Action Type
FAA 762311-015	96	0	44	50	175	APPROVE
Requirement/Remarks: GRANDFATHERED: V272 FIX BRISCAPPROVED. FREQ. PROTECTION & FIELD STRENGTH. PENDING FLIGHT INSPECT @ REQUIRED. DIST. & MIN ALT.						
Signature: Hughes Dennis		Routing Symbol:			Date: 04/04/2016	
<b>Expanded Service Volume Data: (FIFO)</b>						
ESV ID	Radial 1	Radial 2	Distance	Minimum Altitude	Maximum Altitude	Action Type
FAA 762311-015	96	0				
Requirement/Remarks:						
Signature:		Routing Symbol:			Date:	



## ESV Details

Originating Office :	Airspace Docket Number : 14-ASW-13	Request Type : Establish				
<b>Facility Data</b>						
Chart Name : BORGER V272 FIX BRISC	City : BORGER	Ident : BGD		State : TX		
Type/Class : TACR	Frequency : M984	Reference No.: 16041793				
<b>Expanded Service Volume Data: (Requesting Officer)</b>						
ESV ID	Radial 1	Radial 2	Distance	Minimum Altitude	Maximum Altitude	
FAA 694303-015	96	0	44	50	175	
Requirement: GRANDFATHERED: V272 FIX BRISC						
Signature: Ciarlone Mark		Routing Symbol: AJV-5412			Date: 04/01/2016	
<b>Expanded Service Volume Data: (FMO)</b>						
ESV ID	Radial 1	Radial 2	Distance	Minimum Altitude	Maximum Altitude	Action Type
FAA 694303-015	96	0	44	50	175	APPROVE
Requirement/Remarks: GRANDFATHERED: V272 FIX BRISCPEND FLT CHK @ REQ. DIST .& MIN ALT. CAPACITY STUDY REQ./INCREASED INTERROGATION LOAD MAY REDUCE TRANSPONDER REPLIES RESULTING IN LOSS OF DME SERVICE FOR SOME A/C						
Signature: Pape Gregory		Routing Symbol:			Date: 04/04/2016	
<b>Expanded Service Volume Data: (Super FMO)</b>						
ESV ID	Radial 1	Radial 2	Distance	Minimum Altitude	Maximum Altitude	Action Type
FAA 694303-015	96	0	44	50	175	APPROVE
Requirement/Remarks: GRANDFATHERED: V272 FIX BRISCPEND FLT CHK @ REQ. DIST .& MIN ALT. CAPACITY STUDY REQ./INCREASED INTERROGATION LOAD MAY REDUCE TRANSPONDER REPLIES RESULTING IN LOSS OF DME SERVICE FOR SOME A/C						
Signature: Hughes Dennis		Routing Symbol:			Date: 04/04/2016	
<b>Expanded Service Volume Data: (FIFO)</b>						
ESV ID	Radial 1	Radial 2	Distance	Minimum Altitude	Maximum Altitude	Action Type
FAA 694303-015	96	0				
Requirement/Remarks:						
Signature:		Routing Symbol:			Date:	

## ESV Details

Originating Office :	Airspace Docket Number : 14-ASW-13	Request Type : Establish				
<b>Facility Data</b>						
Chart Name : BORGER V272 COP	City : BORGER	Ident : BGD		State : TX		
Type/Class : L-VOR	Frequency : M108.6	Reference No.: 16123846				
<b>Expanded Service Volume Data: (Requesting Officer)</b>						
ESV ID	Radial 1	Radial 2	Distance	Minimum Altitude	Maximum Altitude	
FAA 762311-016	96	0	51	50	175	
Requirement: GRANDFATHERED: V272-440 COP FLT CHKED 7/21/2016 N78 - REQUEST TABLE TOP.						
Signature: Ciarlone Mark		Routing Symbol: AJV-5431			Date: 12/27/2016	
<b>Expanded Service Volume Data: (FMO)</b>						
ESV ID	Radial 1	Radial 2	Distance	Minimum Altitude	Maximum Altitude	Action Type
FAA 762311-016	96	0	51	50	175	APPROVE
Requirement/Remarks: GRANDFATHERED: V272-440 COP FLT CHKED 7/21/2016 N78 - REQUEST TABLE TOP.APPROVED. FREQ. PROTECTION & FIELD STRENGTH. PENDING FLIGHT INSPECT @ REQUIRED. DIST. & MIN ALT.						
Signature: Hughes Dennis		Routing Symbol:			Date: 12/27/2016	
<b>Expanded Service Volume Data: (Super FMO)</b>						
ESV ID	Radial 1	Radial 2	Distance	Minimum Altitude	Maximum Altitude	Action Type
FAA 762311-016	96	0	51	50	175	APPROVE
Requirement/Remarks: GRANDFATHERED: V272-440 COP FLT CHKED 7/21/2016 N78 - REQUEST TABLE TOP.APPROVED. FREQ. PROTECTION & FIELD STRENGTH. PENDING FLIGHT INSPECT @ REQUIRED. DIST. & MIN ALT.						
Signature: Hughes Dennis		Routing Symbol:			Date: 12/27/2016	
<b>Expanded Service Volume Data: (FIFO)</b>						
ESV ID	Radial 1	Radial 2	Distance	Minimum Altitude	Maximum Altitude	Action Type
FAA 762311-016	96	0				
Requirement/Remarks:						
Signature:		Routing Symbol:			Date:	



## ESV Details

Originating Office :	Airspace Docket Number : 14-ASW-13	Request Type : Establish				
<b>Facility Data</b>						
Chart Name : BORGER V272-440 COP	City : BORGER	Ident : BGD		State : TX		
Type/Class : TACAN	Frequency : M984	Reference No.: 16123847				
<b>Expanded Service Volume Data: (Requesting Officer)</b>						
ESV ID	Radial 1	Radial 2	Distance	Minimum Altitude	Maximum Altitude	
FAA 694303-016	96	0	51	50	175	
Requirement: GRANDFATHERED: V272-440 COP FLT CHKED 7/21/2016 N78 - REQUEST TABLE TOP.						
Signature: Ciarlone Mark		Routing Symbol: AJV-5431			Date: 12/27/2016	
<b>Expanded Service Volume Data: (FMO)</b>						
ESV ID	Radial 1	Radial 2	Distance	Minimum Altitude	Maximum Altitude	Action Type
FAA 694303-016	96	0	51	50	175	APPROVE
Requirement/Remarks: GRANDFATHERED: V272-440 COP FLT CHKED 7/21/2016 N78 - REQUEST TABLE TOP.APPROVED. FREQ. PROTECTION & FIELD STRENGTH. PENDING FLIGHT INSPECT @ REQUIRED. DIST. & MIN ALT.						
Signature: gazi abdullahil		Routing Symbol:			Date: 12/27/2016	
<b>Expanded Service Volume Data: (Super FMO)</b>						
ESV ID	Radial 1	Radial 2	Distance	Minimum Altitude	Maximum Altitude	Action Type
FAA 694303-016	96	0	51	50	175	APPROVE
Requirement/Remarks: GRANDFATHERED: V272-440 COP FLT CHKED 7/21/2016 N78 - REQUEST TABLE TOP.PEND FLT CHK @ REQ. DIST .& MIN ALT. CAPACITY STUDY REQ./INCREASED INTERROGATION LOAD MAY REDUCE TRANSPONDER REPLIES RESULTING IN LOSS OF DME SERVICE FOR SOME A/C						
Signature: Hughes Dennis		Routing Symbol:			Date: 12/27/2016	
<b>Expanded Service Volume Data: (FIFO)</b>						
ESV ID	Radial 1	Radial 2	Distance	Minimum Altitude	Maximum Altitude	Action Type
FAA 694303-016	96	0				
Requirement/Remarks:						
Signature:		Routing Symbol:			Date:	

## ESV Details

Originating Office :	Airspace Docket Number : 14-ASW-13	Request Type : Establish				
<b>Facility Data</b>						
Chart Name : BURNS FLAT V272 COP	City : CLINTON	Ident : BFV		State : OK		
Type/Class : L-VOR	Frequency : M110	Reference No.: 16123844				
<b>Expanded Service Volume Data: (Requesting Officer)</b>						
ESV ID	Radial 1	Radial 2	Distance	Minimum Altitude	Maximum Altitude	
FAA 850067-009	283	0	61	50	175	
Requirement: GRANDFATHERED: V272 COP FLT CHKED 7/21/2016 N78 - REQUEST TABLE TOP.						
Signature: Ciarlone Mark		Routing Symbol: AJV-5431			Date: 12/27/2016	
<b>Expanded Service Volume Data: (FMO)</b>						
ESV ID	Radial 1	Radial 2	Distance	Minimum Altitude	Maximum Altitude	Action Type
FAA 850067-009	283	0	61	50	175	APPROVE
Requirement/Remarks: GRANDFATHERED: V272 COP FLT CHKED 7/21/2016 N78 - REQUEST TABLE TOP.APPROVED. FREQ. PROTECTION & FIELD STRENGTH. PENDING FLIGHT INSPECT @ REQUIRED. DIST. & MIN ALT.						
Signature: Hughes Dennis		Routing Symbol:			Date: 12/27/2016	
<b>Expanded Service Volume Data: (Super FMO)</b>						
ESV ID	Radial 1	Radial 2	Distance	Minimum Altitude	Maximum Altitude	Action Type
FAA 850067-009	283	0	61	50	175	APPROVE
Requirement/Remarks: GRANDFATHERED: V272 COP FLT CHKED 7/21/2016 N78 - REQUEST TABLE TOP.APPROVED. FREQ. PROTECTION & FIELD STRENGTH. PENDING FLIGHT INSPECT @ REQUIRED. DIST. & MIN ALT.						
Signature: Hughes Dennis		Routing Symbol:			Date: 12/27/2016	
<b>Expanded Service Volume Data: (FIFO)</b>						
ESV ID	Radial 1	Radial 2	Distance	Minimum Altitude	Maximum Altitude	Action Type
FAA 850067-009	283	0				
Requirement/Remarks:						
Signature:		Routing Symbol:			Date:	



## ESV Details

Originating Office :	Airspace Docket Number : 14-ASW-13	Request Type : Establish				
<b>Facility Data</b>						
Chart Name : BURNS FLAT V272 COP	City : CLINTON	Ident : BFV		State : OK		
Type/Class : TACAN	Frequency : M998	Reference No.: 16123845				
<b>Expanded Service Volume Data: (Requesting Officer)</b>						
ESV ID	Radial 1	Radial 2	Distance	Minimum Altitude	Maximum Altitude	
FAA 850066-011	283	0	61	50	175	
Requirement: GRANDFATHERED: V272 COP FLT CHKED 7/21/2016 N78 - REQUEST TABLE TOP.						
Signature: Ciarlone Mark		Routing Symbol: AJV-5431			Date: 12/27/2016	
<b>Expanded Service Volume Data: (FMO)</b>						
ESV ID	Radial 1	Radial 2	Distance	Minimum Altitude	Maximum Altitude	Action Type
FAA 850066-011	283	0	61	50	175	APPROVE
Requirement/Remarks: GRANDFATHERED: V272 COP FLT CHKED 7/21/2016 N78 - REQUEST TABLE TOP.PEND FLT CHK @ REQ. DIST .& MIN ALT. CAPACITY STUDY REQ./INCREASED INTERROGATION LOAD MAY REDUCE TRANSPONDER REPLIES RESULTING IN LOSS OF DME SERVICE FOR SOME A/C						
Signature: Hughes Dennis		Routing Symbol:			Date: 12/27/2016	
<b>Expanded Service Volume Data: (Super FMO)</b>						
ESV ID	Radial 1	Radial 2	Distance	Minimum Altitude	Maximum Altitude	Action Type
FAA 850066-011	283	0	61	50	175	APPROVE
Requirement/Remarks: GRANDFATHERED: V272 COP FLT CHKED 7/21/2016 N78 - REQUEST TABLE TOP.PEND FLT CHK @ REQ. DIST .& MIN ALT. CAPACITY STUDY REQ./INCREASED INTERROGATION LOAD MAY REDUCE TRANSPONDER REPLIES RESULTING IN LOSS OF DME SERVICE FOR SOME A/C						
Signature: Hughes Dennis		Routing Symbol:			Date: 12/27/2016	
<b>Expanded Service Volume Data: (FIFO)</b>						
ESV ID	Radial 1	Radial 2	Distance	Minimum Altitude	Maximum Altitude	Action Type
FAA 850066-011	283	0				
Requirement/Remarks:						
Signature:		Routing Symbol:			Date:	