

FEDERAL AVIATION ADMINISTRATION  
FLIGHT STANDARDS SERVICE  
STANDARD TERMINAL ARRIVAL (STAR)

Bearings, headings, courses, tracks and radials are magnetic. Elevations and altitudes are in feet, MSL. Altitudes are minimum altitudes unless otherwise indicated.  
Distances are in nautical miles (NM). Graphic depictions attached.

Arrival Name	Number	STAR Computer Code	Superseded Number	Dated	Effective Date
JINXX (RNAV)	ONE	JINXX.JINXX1	NONE		

TRANSITION ROUTES:

Transition Name	Transition Computer Codes	From FIX/NAVAID	To FIX/NAVAID	Mag Course	Distance	MEA	MOCA	MAA	Crossing Altitudes / Fixes
CRUZR	CRUZR.JINXX1	CRUZR	CRUZR						BETWEEN FL260 AND FL350
			REDXX	181.11	24.47	11000	10300		AT/ABOVE 11000
			UCABU	180.91	16.34	10000	9100		AT/ABOVE 10000
			JINXX	180.68	05.36	7500	4100		BETWEEN 7500 AND FL180
HOJOE	HOJOE.JINXX1	HOJOE	HOJOE						BETWEEN FL260 AND FL350
			DXSTR	215.38	57.84	11000	9600		AT/ABOVE 11000
			TIDBY	214.23	15.10	10000	8900		AT/ABOVE 10000
			JINXX	212.67	04.90	7500	2900		BETWEEN 7500 AND FL180

ARRIVAL ROUTE DESCRIPTION:

LANDING RWY 6: FROM JINXX ON TRACK 228.75/20.50 TO CROSS HOBBS BETWEEN 7000 AND 10000, THEN ON TRACK 227.85/7.30 TO CROSS RUNTZ AT 7000, THEN ON TRACK 183.81/6.73 TO CROSS RNICH BETWEEN 4500 AND 6000, THEN ON TRACK 102.53/6.59 TO CROSS SSNOW AT OR ABOVE 2500. EXPECT ILS Z OR LOC/DME RWY 6 APPROACH.

PROCEDURAL DATA NOTES:

- NOTE: RADAR REQUIRED
- NOTE: RNAV 1
- NOTE: GPS REQUIRED
- NOTE: MILITARY USE ONLY.

FIXES AND/OR HOLDING PATTERNS:

COMMUNICATIONS:

ATIS, ANCHORAGE APP CON, ANCHORAGE CENTER, ELMENDORF TOWER, GND CON

AIRPORTS SERVED:

ELMENDORF AFB, ANCHORAGE, AK (PAED)

LOST COMMUNICATIONS PROCEDURE:

REMARKS:



FEDERAL AVIATION ADMINISTRATION  
FLIGHT STANDARDS SERVICE  
STANDARD TERMINAL ARRIVAL (STAR)

Bearings, headings, courses, tracks and radials are magnetic. Elevations and altitudes are in feet, MSL. Altitudes are minimum altitudes unless otherwise indicated.  
Distances are in nautical miles (NM). Graphic depictions attached.

Arrival Name	Number	STAR Computer Code	Superseded Number	Dated	Effective Date
JINXX (RNAV)	ONE	JINXX.JINXX1	NONE		

ADDITIONAL FLIGHT DATA:

DME/DME ASSESSMENT: NOT CONDUCTED  
REFERENCE MAGNETIC VARIATION = PAED 18E/2015.  
CHART: FOX ATCAA.  
CHART AT SSNOW TERMINUS: PAED LDG RWY 06.

FLIGHT INSPECTED BY:

Name	Organization	Date	Signature
------	--------------	------	-----------

DEVELOPED BY:

Steve Kessler, Support Manager for Airspace and Procedures

Name	Organization	Date	Signature
------	--------------	------	-----------

Anchorage ARTCC

11/06/2017

*Digitally signed by*  
**CASIMIR L TABAKA**

Feb 12, 2018

APPROVED BY:

Name	Organization	Date	Signature
------	--------------	------	-----------

CHANGES:

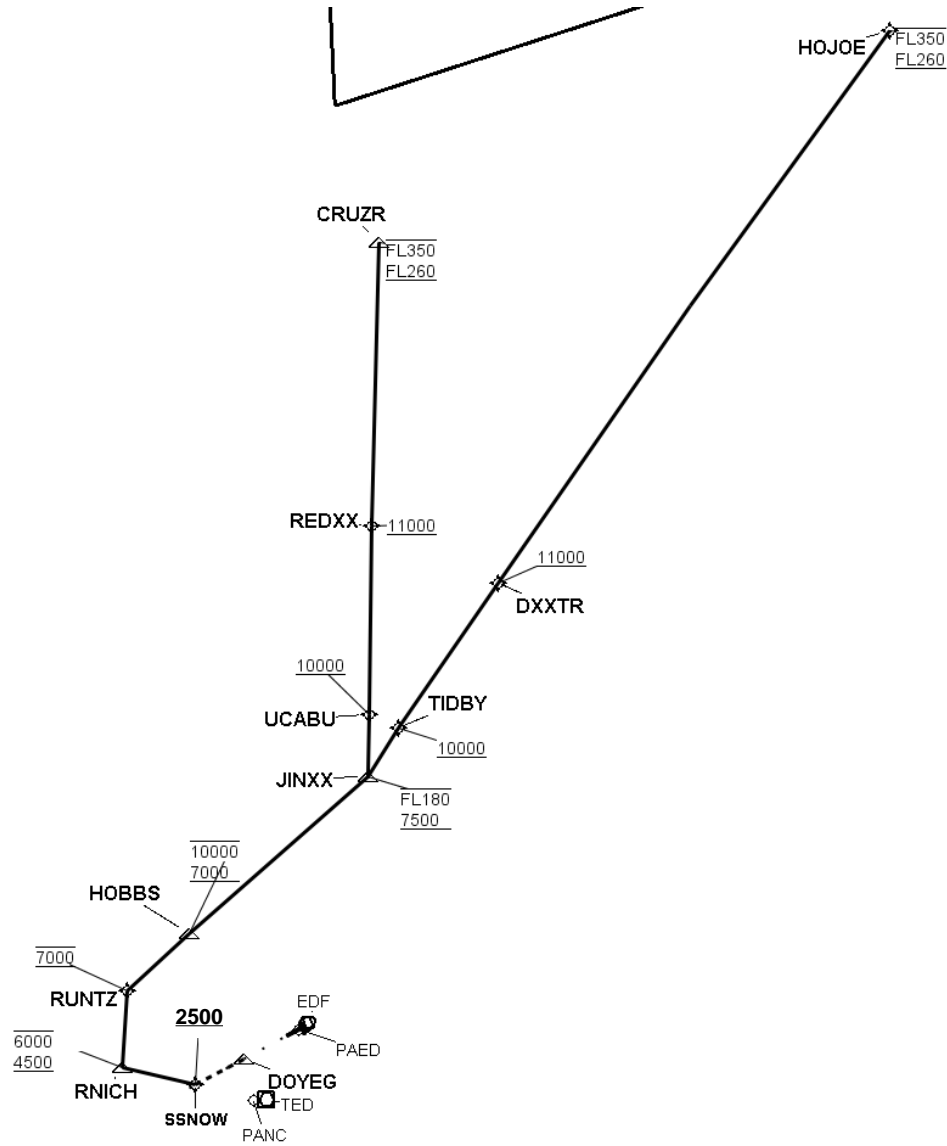
REASONS:

FEDERAL AVIATION ADMINISTRATION  
FLIGHT STANDARDS SERVICE  
STANDARD TERMINAL ARRIVAL (STAR)

Bearings, headings, courses, tracks and radials are magnetic. Elevations and altitudes are in feet, MSL. Altitudes are minimum altitudes unless otherwise indicated.  
Distances are in nautical miles (NM). Graphic depictions attached.

Arrival Name	Number	STAR Computer Code	Superseded Number	Dated	Effective Date
JINXX (RNAV)	ONE	JINXX.JINXX1	NONE		

Graphic Depiction 1



FEDERAL AVIATION ADMINISTRATION  
FLIGHT STANDARDS SERVICE  
STAR (DATA RECORD)

Arrival Name JINXX (RNAV)	Number ONE	STAR Computer Code JINXX.JINXX1		Superseded Number NONE		Dated	Effective Date		
FIX/NAVAID	LAT/LONG	C	FO/FB	LEG TYPE	TC	DIST (NM)	ALTITUDE	SPEED	REMARKS
En Route Transition									
CRUZR	621737.27N / 1485049.55W	Y		IF			FL260BFL350		CRUZR.JINXX1
REDXX	615433.00N / 1490746.00W	Y	FB	TF	199.11	24.47	AT/ABOVE 11000		
UCABU	613908.00N / 1491852.00W	Y	FB	TF	198.91	16.34	AT/ABOVE 10000		
JINXX	613404.22N / 1492227.30W	Y	FB	TF	198.68	05.36	7500BFL180		
En Route Transition									
HOJOE	622124.69N / 1471148.00W	Y		IF			FL260BFL350		HOJOE.JINXX1
DXXTR	614625.85N / 1484931.50W	Y	FB	TF	233.38	57.84	AT/ABOVE 11000		
TIDBY	613710.37N / 1491431.50W	Y	FB	TF	232.23	15.10	AT/ABOVE 10000		
JINXX	613404.22N / 1492227.30W	Y	FB	TF	230.67	04.90	7500BFL180		
Runway Transition									
JINXX	613404.22N / 1492227.30W	Y		IF			7500BFL180		
HOBBS	612554.26N / 1500140.51W	Y	FB	TF	246.75	20.50	7000B10000		
RUNTZ	612254.87N / 1501531.09W	Y	FB	TF	245.85	07.30	AT 7000		
RNICH	611640.92N / 1502042.00W	Y	FB	TF	201.81	06.73	4500B6000		
SSNOW	611320.10N / 1500857.51W	Y	FB	TF	120.53	06.59	AT/ABOVE 2500		
PAED:RWY 6									

