

Flight Procedure Tracking Form		Action: FLIGHT CHECK	Task Type: IAP	Date Open: 04/21/2015	Task #: 2015042128118001006	Request #: 20150421281180
Procedure: RNAV (GPS) RWY 14L AMDT 0A			Airport ID: KBLV	Airport: SCOTT AFB/MIDAMERICA	Reimbursable #: NO	
City: BELLEVILLE	ST: IL	GPS #:	Estimated Chart Date: 03/31/2016		FICO #:	
Fac ID: N/A		Fac. Type:		Specialist: JAMES ROGERS		
Procedure Review						
	Rec'd	Rel'd	Full Name	Comments		
Lead:	08/18/2015					
QA:				CWS 2/13/2016		
Liaison:						
Procedure Comments:			Remark Type: INFORMATION			
<p>PENDING DATA USED FOR KBLV AIRPORT ACTIVE DATA USED FOR RWY.</p> <p>ASSIGNED MAG VAR: KBLV: OLD 2E - NEW 2W</p> <p>CONTACT: JACOB POWERS 405-954-8702 / PETER GETZ 405-954-4919 AJV-5420 POC'S</p>						

WAAS CH 58218 W14A	APP CRS 139°	Rwy Idg 10000 TDZE 442 Apt Elev 459
--	------------------------	--

RNAV (GPS) RWY 14L

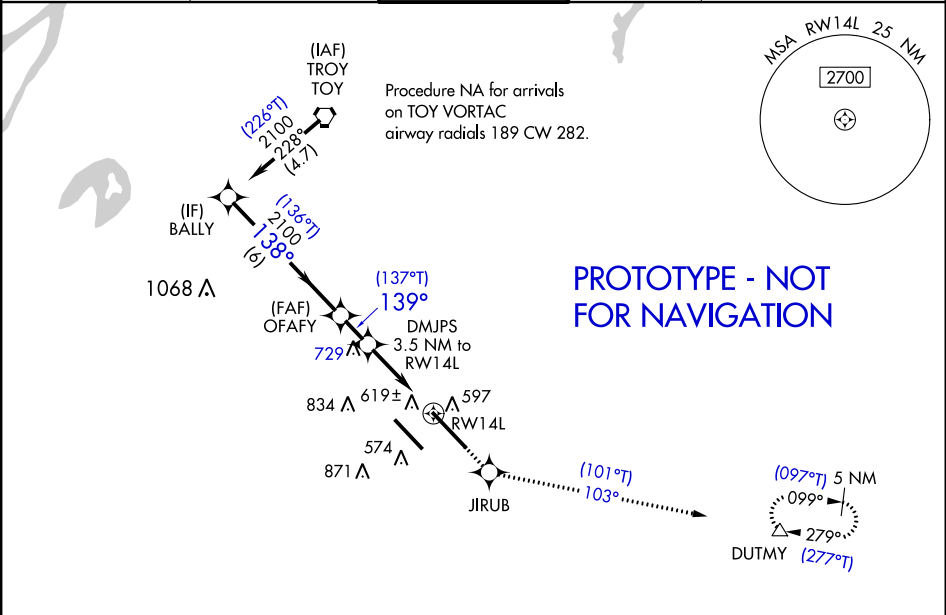
SCOTT AFB/MIDAMERICA (BLV)

⚠ For uncompensated Baro-VNAV systems, LNAV/VNAV NA below -15°C (5°F) or above 48°C (118°F). DME/DME RNP-0.3 NA. Baro-VNAV and VDP NA when using St. Louis Downtown altimeter setting. Helicopter visibility reduction below ¾ SM NA. When local altimeter setting not received, use St. Louis Downtown altimeter setting and increase all DA 42 feet and all MDA 60 feet, increase LNAV Cats C/D and Circling Cat D visibility ¼ mile.

ASR

MISSED APPROACH:
Climb to 2300 direct JIRUB and on track 103° to DUTMY and hold.

ATIS ★ 128.7 256.7	ST LOUIS APP CON 125.2 281.5	SCOTT TOWER 128.25 253.5	GND CON 119.2 275.8	CLNC DEL 119.875 225.4 263.025
------------------------------	--	------------------------------------	-------------------------------	--



VGSI and RNAV glidepath not coincident (VGSI Angle 3.00/TCH 71).					2300	JIRUB	DUTMY	ELEV 459	TDZE 442
					↑	✧	tr 103°	△	
BALLY					*LNAV only.				
2100					2100				
GP 3.00°					*1620				
TCH 55					RWY 14L				
6 NM					1.2 NM				
CATEGORY					D				
LPV DA					642/40 200 (200-¾)				
LNAV/VNAV DA					934-1½ 492 (500-1½)				
LNAV MDA					900/55 458 (500-1)				
1000-1					1240-2½				
541 (600-1)					781 (800-1¼)				
1080-1					1240-2½				
621 (700-1)					781 (800-2½)				
CIRCLING					REIL Rwy 14L				
					HIRL Rwy 14R-32L and 14L-32R				

OLD

BELLEVILLE, ILLINOIS

AL-46 (FAA)

10210

WAAS CH 58218 W14A	APP CRS 135°	Rwy ldg 10000 TDZE 442 Apt Elev 459
--	------------------------	--

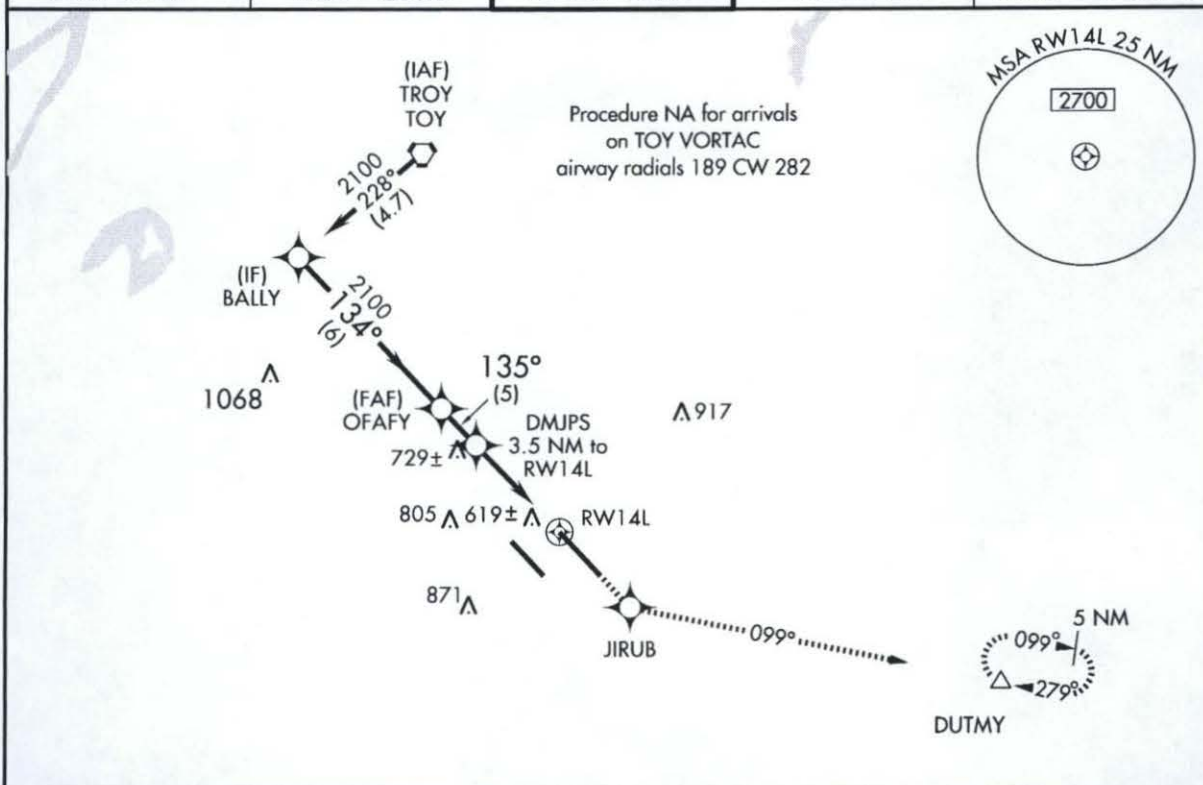
RNAV (GPS) RWY 14L

BELLEVILLE/SCOTT AFB/MIDAMERICA (BLV)

▼ For uncompensated Baro-VNAV systems, LNAV/VNAV NA below -15°C (5°F) or above 48°C (118°F). DME/DME RNP-0.3 NA. Visibility reduction by helicopters NA. Baro-VNAV and VDP NA when using St. Louis Downtown altimeter setting. When local altimeter setting not received, use St. Louis Downtown altimeter setting and increase all DA 42 feet and all MDA 60 feet, increase LNAV Cats C/D and Circling Cat D visibility ¼ mile.

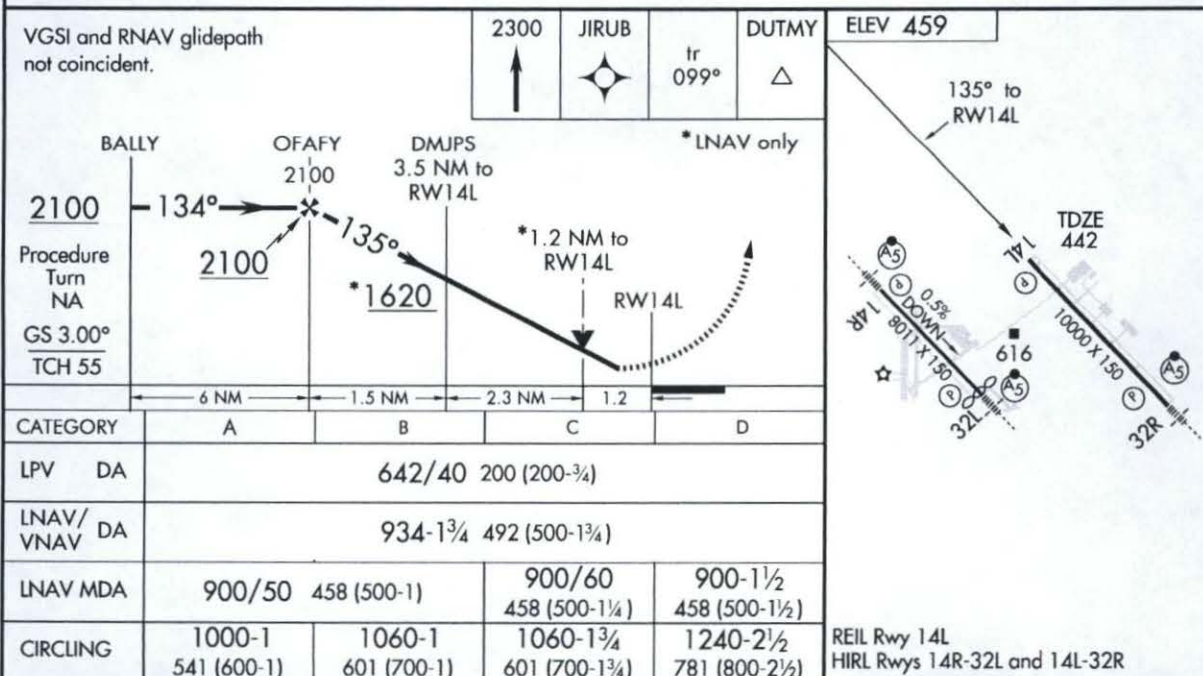
MISSED APPROACH:
Climb to 2300 direct JIRUB and on track 099° to DUTMY and hold.

ATIS ★ 128.7 256.7	ST LOUIS APP CON 125.2 281.5	SCOTT TOWER 128.25 253.5	GND CON 119.2 275.8	CLNC DEL 119.875 263.025
------------------------------	--	------------------------------------	-------------------------------	------------------------------------



EC-3, 29 JUL 2010 to 26 AUG 2010

EC-3, 29 JUL 2010 to 26 AUG 2010



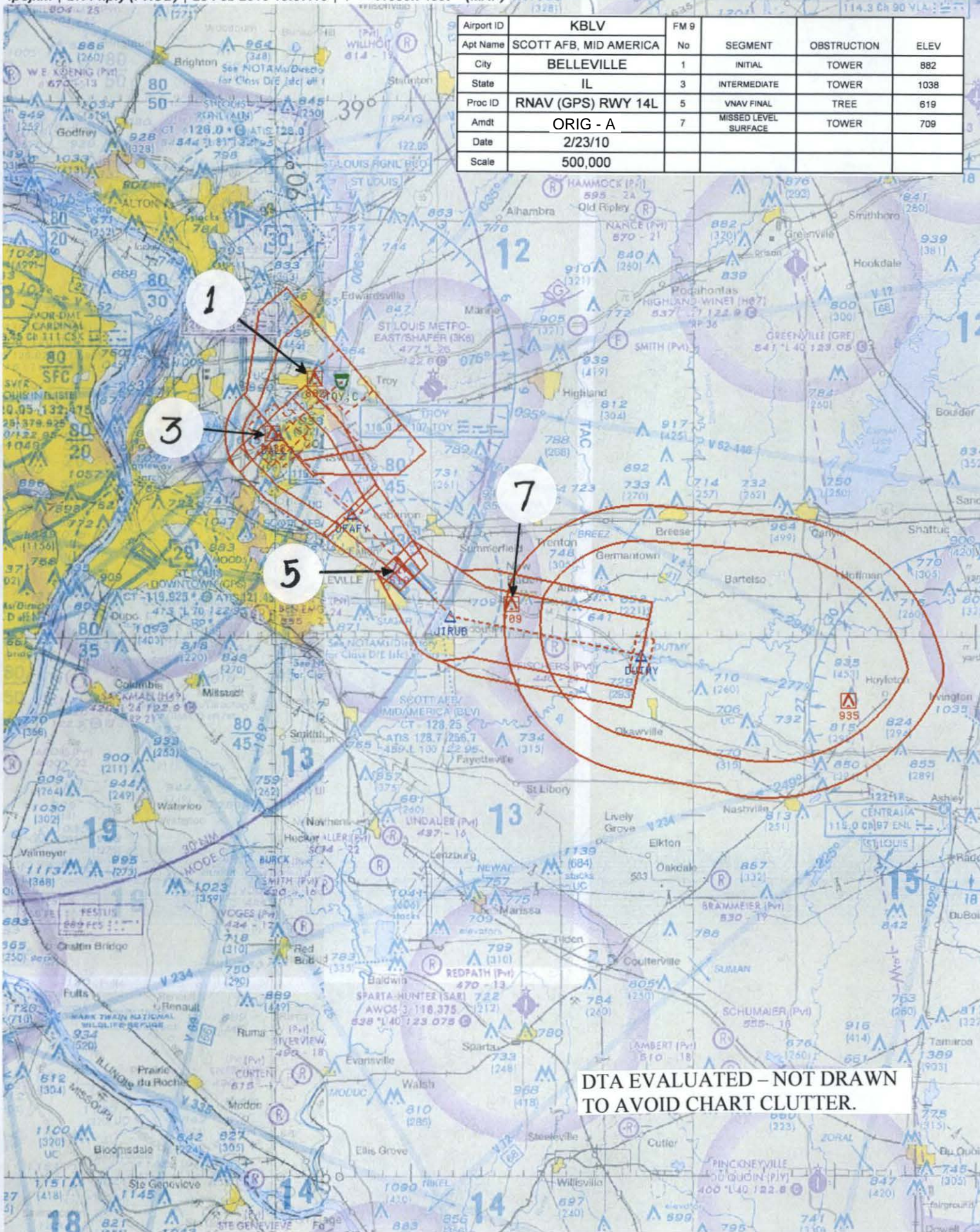
BELLEVILLE, ILLINOIS
Orig 29JUL10

BELLEVILLE/SCOTT AFB/MIDAMERICA (BLV)
38°33'N - 89°50'W
RNAV (GPS) RWY 14L

NM 7 14 21 28 3 42 49
 FT 42000 84000 126000 168000 210000 252000 294000

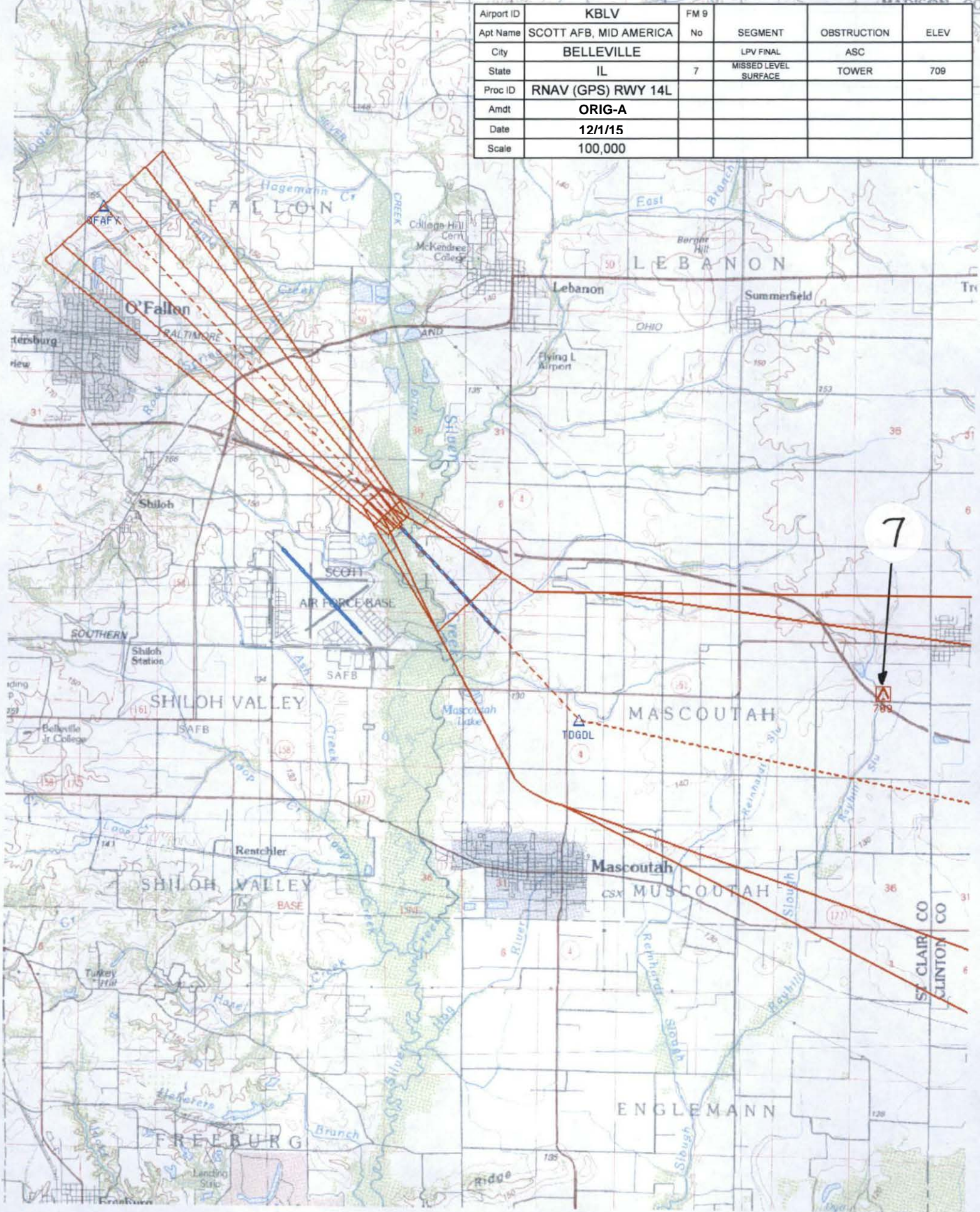
fpojxm | blv14ply (PROD) | 23 Feb 2010 10:57:10 | 1" = 41666.7 feet (MAP)

Airport ID	KBLV	FM 9			
Apt Name	SCOTT AFB, MID AMERICA	No	SEGMENT	OBSTRUCTION	ELEV
City	BELLEVEILLE	1	INITIAL	TOWER	882
State	IL	3	INTERMEDIATE	TOWER	1038
Proc ID	RNAV (GPS) RWY 14L	5	VNAV FINAL	TREE	619
Amdt	ORIG - A	7	MISSED LEVEL SURFACE	TOWER	709
Date	2/23/10				
Scale	500,000				



DTA EVALUATED - NOT DRAWN
 TO AVOID CHART CLUTTER.

Airport ID	KBLV	FM 9			
Apt Name	SCOTT AFB, MID AMERICA	No	SEGMENT	OBSTRUCTION	ELEV
City	BELLEVILLE		LPV FINAL	ASC	
State	IL	7	MISSED LEVEL SURFACE	TOWER	709
Proc ID	RNAV (GPS) RWY 14L				
Amdt	ORIG-A				
Date	12/1/15				
Scale	100,000				

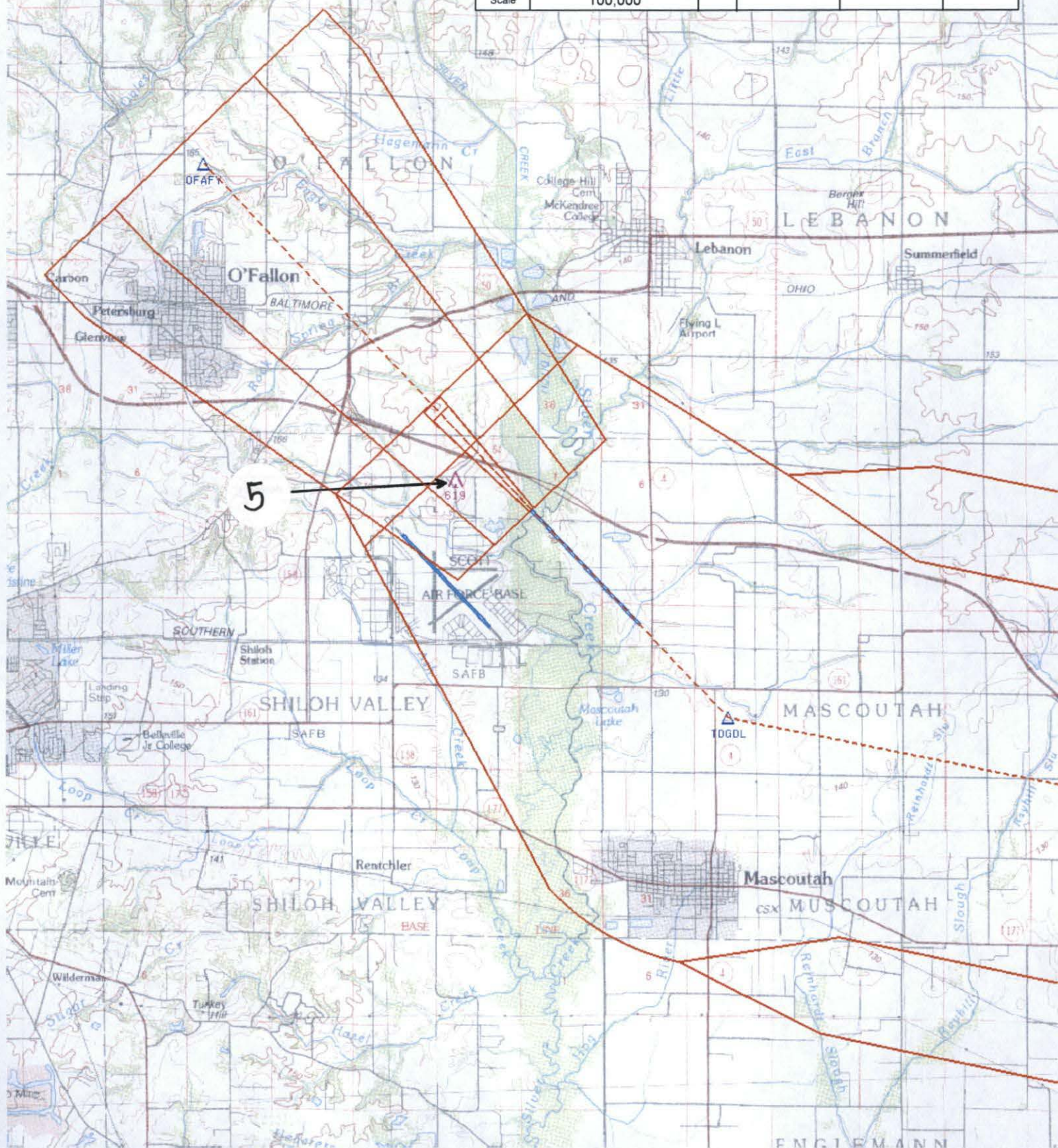


NM 1 2 3 4 5 6 7 8 9 10
 FT 8000 16000 24000 32000 40000 48000 56000 64000

fpojxm | blvgps14I (PROD) | 22 Feb 2010 10:10:04 | 1" = 8333.3 feet (MAP)

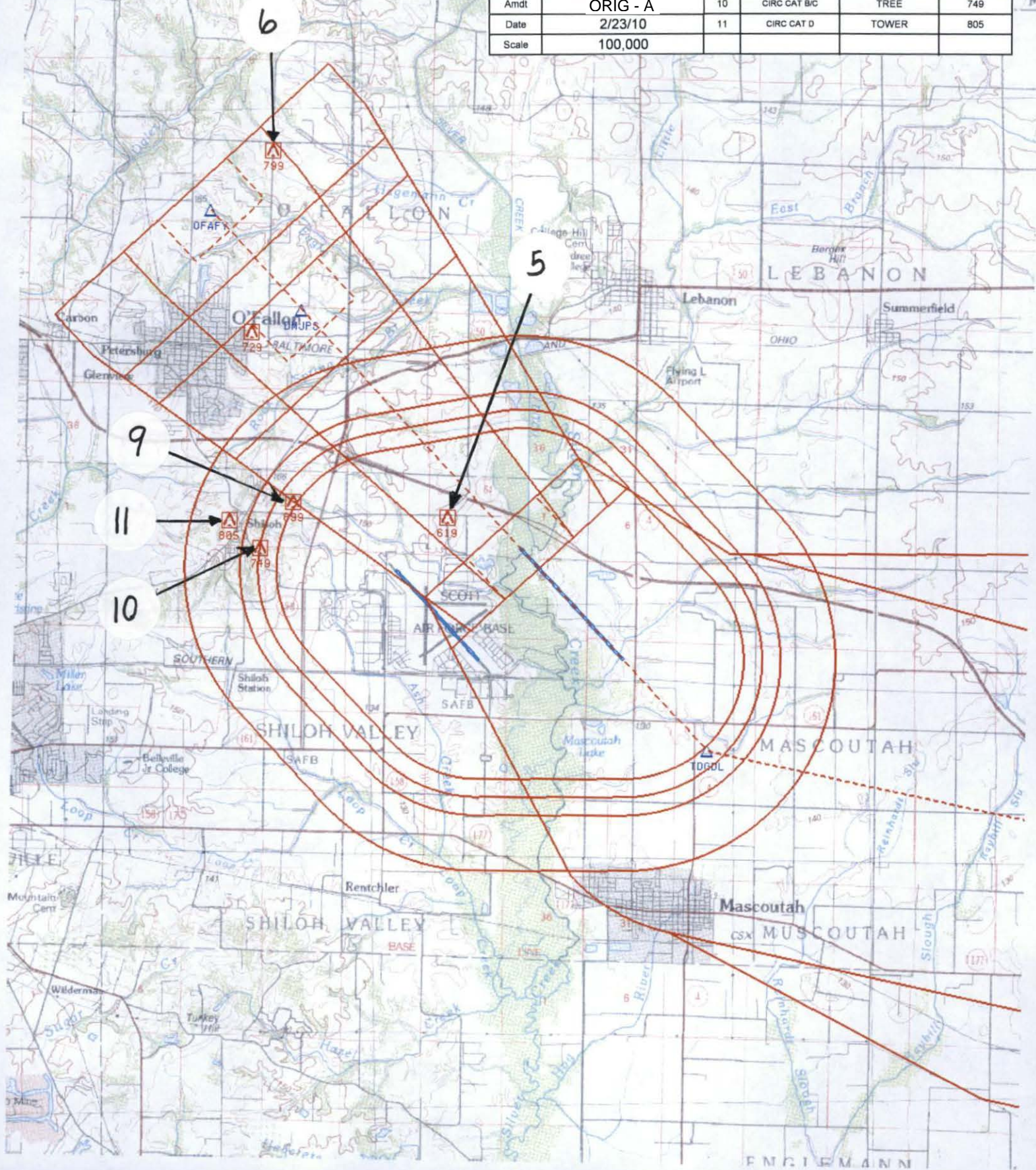
Airport ID	KBLV	FM 9			
Apt Name	SCOTT AFB, MID AMERICA	No	SEGMENT	OBSTRUCTION	ELEV
City	BELLEVILLE	5	VNAV FINAL	TREE	619
State	IL				
Proc ID	RNAV (GPS) RWY 14L				
Amdt	ORIG - A				
Date	2/23/10				
Scale	100,000				

DISON CO
 CLAIR CO



ENGELMANN

Airport ID	KBLV	FM 9			
Apt Name	SCOTT AFB, MID AMERICA	No	SEGMENT	OBSTRUCTION	ELEV
City	BELLEVILLE	6	LNAV FINAL	AAO	799
State	IL	5	LNAV STEPDOWN	TREE	619
Proc ID	RNAV (GPS) RWY 14L	9	CIRC CAT A	TREE	699
Amdt	ORIG - A	10	CIRC CAT B/C	TREE	749
Date	2/23/10	11	CIRC CAT D	TOWER	805
Scale	100,000				



Flight Procedure Tracking Form			Action: REVIEW/INQUIRY	Task Type: BRO	Date Open: 02/02/2014	Task #: 2014020224715501001	Request #: 20140202247155
Procedure: RNAV (GPS) RWY 14L, ORIG			Airport ID: KBLV	Airport: SCOTT AFB/MIDAMERICA		Reimbursable #:	
City:		ST: IL	GPS #:		Estimated Chart Date: 09/25/2014		FICO #:
Fac ID:		Fac. Type:		Specialist: JEFF ANDERSON			
Procedure Review							
	Rec'd	Rel'd	Full Name	Comments			
Lead:							
QA:							
Liaison:							
Procedure Comments:				Remark Type: INFORMATION			
<p>KBLV SCOTT AFB/MIDAMERICA, IL RNAV (GPS) RWY 14L ORIG, BIENNIAL REVIEW (PARTIAL) FINDINGS: MAGVAR OUT OF TOLERANCE 2E (1985) VS 2W (2015). PROCEDURE REQUIRES MAJOR AMENDMENT TO NEW MAGVAR, (.54A) CRITERIA, TERPS CHANGE 21 CIRCLING CRITERIA AND FORMS TO CURRENT STANDARDS. NO NOTAMS PUBLISHED, NO NOTAMS REQUIRED.</p>							



Federal Aviation Administration

Memorandum

Date: MAY 25 2010

To: Dick Powell, Manager, National Flight Data Center, AJR-32
ORIGINAL SIGNED BY

From: Susan L. W. Crumb, Manager, Terminal Procedures & Charting Services
Central Team, AJW-3753

Reply To Attn Of: Wade EK Terrell, Lead, Production Integration Coordination Team,
AJW-3741

Subject: **ACTION:** Transmittal of Data

The attached FAA Form(s) for Scott AFB/ MidAmerica, Belleville, IL (KBLV) are submitted for entry into the Transmittal Letter.

8260-3	RNAV (GPS) RWY 14L, ORIG RNAV (GPS) RWY 32R, ORIG	
8260-5	GPS RWY 14L, ORIG-B (CANCEL) GPS RWY 32R, ORIG-B (CANCEL)	
8260-2	AFEFE, IL REV 1 COFEY, IL ORIG* DUTMY, IL REV 3* JIKMO, IL ORIG MADDT, IL ORIG OJAMO, IL ORIG	BALLY, IL ORIG DMJPS, IL ORIG ENRRN, IL ORIG JIRUB, IL ORIG OFAFY, IL ORIG

REQUESTING PUBLICATION: 29 July 2010

If unable to accommodate, please notify Wade Terrell as soon as possible.

Attachments

* Asterisk denotes enroute fix

CONCURRENCES
ROUTING SYMBOL AJW-3741 SBaker
INITIALS/SIG SSB
DATE 5-25-10
ROUTING SYMBOL AJW-3753 JMcCullough
INITIALS/SIG JAM
DATE 5-25-10
ROUTING SYMBOL AJW-3753 LStrout
INITIALS/SIG LW
DATE 5.25.10
ROUTING SYMBOL AJW-3753 SCrumb
INITIALS/SIG LW
DATE 05/25/2010
ROUTING SYMBOL AJW-3741 WTerrell
INITIALS/SIG W
DATE 5/25/10
ROUTING SYMBOL AJW-3741-FTP MHooper
INITIALS/SIG MHA
DATE 5/25/10
ROUTING SYMBOL
INITIALS/SIG
DATE
ROUTING SYMBOL
INITIALS/SIG
DATE

CG

FLIGHT INSPECTION PROCEDURE CONTROL FORM

PROCEDURE: RNAV (GPS) RWY 14L 0.00		AIRPORT NAME: SCOTT AFB/MIDAMERICA		AIRPORT ID: KBLV	SPECIAL CONTROL NO: BG-4-298-10
CITY: BELLEVILLE				ST: IL	ORIG CHART DATE: 07/29/10
FAC ID: KBLV14L	DFL TYPE: PROC/S	THIRD PARTY: <input type="checkbox"/> YES	EST. TIME ON SITE: 0.0	REIMB. NUMBER:	

PREFLIGHT NOTES

REVIEWER:	DATE:	
COMMENTS:	ASSOCIATED FACILITIES:	CHECK ONE: <input type="checkbox"/> FLT CK REQ <input type="checkbox"/> NFCR <input type="checkbox"/> REJECT
		YES NO
		VIDEO MAP REQUIRED?
		ESV(S) ATTACHED?
		GROUND MAINTENANCE?

POST FLIGHT

INSPECTION DATE: 5/19/2010	CREW #: VN130	N #: 59	CHECK ONE: <input checked="" type="checkbox"/> SAT <input type="checkbox"/> SAT W/CHANGES <input checked="" type="checkbox"/> SAT / GOLD <input type="checkbox"/> UNSAT	NOTAM ISSUED? <input type="checkbox"/> YES
FLIGHT INSPECTOR SIGNATURE: <i>Ray Pignone</i>			PRINT NAME: <i>Ray Pignone</i>	
FLIGHT INSPECTOR REMARKS: SAT/GOOD				

RECEIVED MAY 21 2010

VN 8200-6-1

TERMINAL IRSPACE DATA REQUIREMENTS

CITY: BELLEVILLE

STATE: IL

AIRPORT NAME: SCOTT AFB, MID AMERICA

ID: KBLV

PROCEDURE: RNAV (GPS) RWY 14L

AMDT: ORIG

DOCKET#:

(96-AXX-X/Required/Not Required)

ALL DIST TO 1/100 NM; ELEV TO NEAREST FT; COORD TO 1/100 SEC; DEG TO 1/100 DG.

- | | | | |
|---|---------------------------------|--------------------------------|---------------|
| 1. Distance from | <u>THLD</u> | to 1000' point | <u>3.47</u> |
| <small>(Enter THLD, FAF, ARP, FACILITY, as appropriate)</small> | | | |
| 2. Width of | <u>FINAL</u> | segment at 1000' point | <u>1.76</u> |
| <small>(Enter appropriate segment, final, intermediate, etc.)</small> | | | |
| 3. True Course of | <u>FINAL</u> | segment containing 1000' point | <u>136.50</u> |
| 4. High Terrain in | <u>FINAL</u> | segment containing 1000' point | <u>599</u> |
| 5. Distance from | <u>THLD</u> | to 1500' point | <u>4.97</u> |
| <small>(If 1500' point in PT maneuvering area or holding pattern note in remarks)</small> | | | |
| 6. Width of | <u>FINAL</u> | segment at 1500' point | <u>2.00</u> |
| 7. True Course of | <u>FINAL</u> | segment containing 1500' point | <u>136.50</u> |
| 8. High Terrain in | <u>FINAL</u> | segment containing 1500' point | <u>599</u> |
| 9. Threshold Coordinates (if straight-in) ... | <u>383322.31N / 0895000.59W</u> | | |
| 10. ARP Coordinates | <u>383242.60N / 0895006.70W</u> | | |
| 11. Runway Approach End and distance furthest from ARP | RWY | <u>32R</u> | |
| | Distance | <u>1.32</u> | NM |
| 12. FAF Coordinates | <u>383658.82N / 0895422.11W</u> | | |

REMARKS: Approach/Drawing attached.