

<b>Flight Procedure Tracking Form</b>		<b>Action:</b> FLIGHT CHECK	<b>Task Type:</b> IAP	<b>Date Open:</b> 04/16/2015	<b>Task #:</b> 2015041629057201001	<b>Request #:</b> 20150416290572
<b>Procedure:</b> ILS OR LOC RWY 13R AMDT 12C			<b>Airport ID:</b> KHOU	<b>Airport:</b> WILLIAM P HOBBY		<b>Reimbursable #:</b> NO
<b>City:</b> HOUSTON	<b>ST:</b> TX	<b>GPS #:</b>	<b>Estimated Chart Date:</b> 11/10/2016		<b>FICO #:</b>	
<b>Fac ID:</b> PRQ		<b>Fac. Type:</b> ILS			<b>Specialist:</b> WILLIAM HANBY	
<b>Procedure Review</b>						
	<b>Rec'd</b>	<b>Rel'd</b>	<b>Full Name</b>	<b>Comments</b>		
<b>Lead:</b>	03/29/2016					
<b>QA:</b>				4 8/5CTabaka		
<b>Liaison:</b>						
<b>Procedure Comments:</b> ENROUTE-NON <b>Remark Type:</b> INFORMATION						
<p>TABLE TOP REQUESTED.</p> <p>ABBREVIATED AMENDMENT.</p> <p>CHANGED RWY NUMBERS AND RAISED CIRCLING MINS TO MATCH RECENT FLIGHT INSPECTION OF ILS OR LOC RWY 4 PUBLISHED IAP.</p> <p>CONTACT: JACOB POWERS 405-954-8702 OR TOM KIRKPATRICK 405-954-0654.</p>						



LOC/DME I-PRQ	APP CRS	Rwy Idg	6565
111.3	131°	TDZE	46
Chan 50		Apt Elev	46

ILS or LOC RWY 13R  
WILLIAM P. HOBBY (HOU)

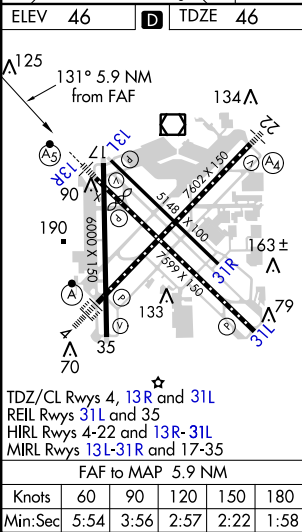
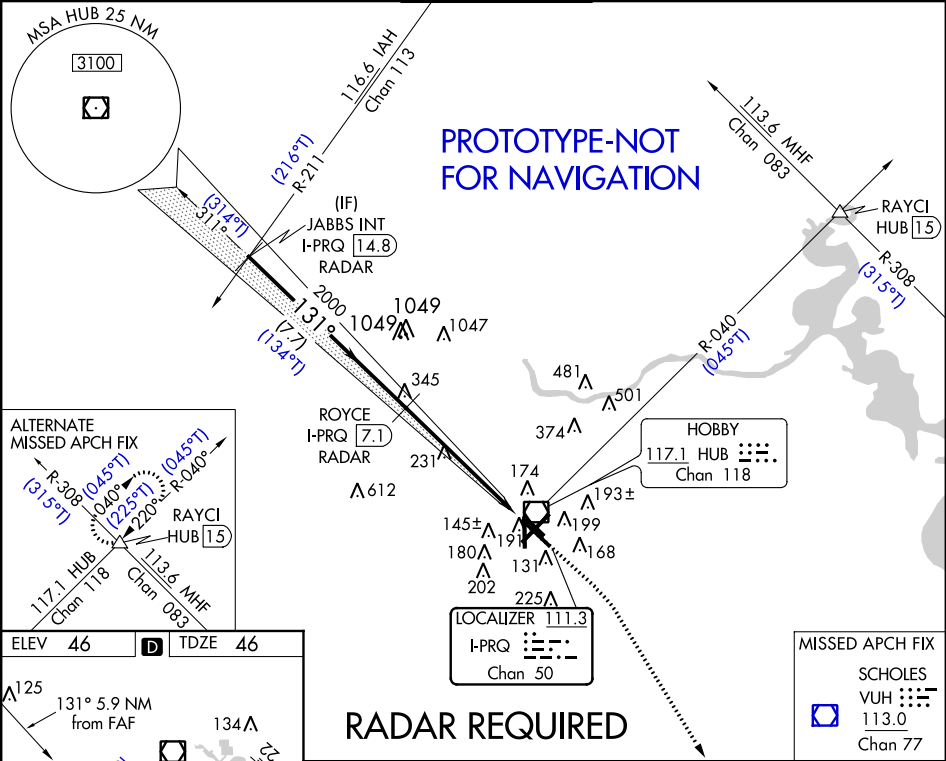
**⚠ Inop table does not apply to S-ILS RWY 13R. DME or RADAR required.**

**⚠ RWY 13R helicopter visibility reduction below ¾ SM NA. For inop ALS, increase S-LOC 13R Cats A/B visibility to RVR 5500, Cats C/D to 1 ¾ SM, and Cat E 1 ¾ SM.**

MALSR

MISSED APPROACH: Climb to 800 then climbing right turn to 2200 direct VUH VOR/DME.

ATIS	HOUSTON APP CON	HOBBY TOWER	GND CON	CLNC DEL	CPDLC
124.6	120.05 379.1 EAST 124.35 316.15 WEST	118.7 256.9	121.9	125.45	



	JABBS INT I-PRQ 14.8 RADAR	ROYCE I-PRQ 7.1 RADAR	800	2200	VUH
			↑	↻	⬜
			* I-PRQ 2.6	* LOC only I-PRQ 1.3	
	2000	2000			
	131°				
	7.7 NM	4.5 NM	1.4 NM		
CATEGORY	A	B	C	D	E
S-ILS 13R	296/40 250 (300-¾)				
S-LOC 13R	540/40 494 (500-¾)	540/50 494 (500-1)	540/60 494 (500-1¼)		
CIRCLING	540-1 494 (500-1)	740-2¼ 694 (700-2¼)	860-3 814 (900-3)		

OLD

HOUSTON, TEXAS

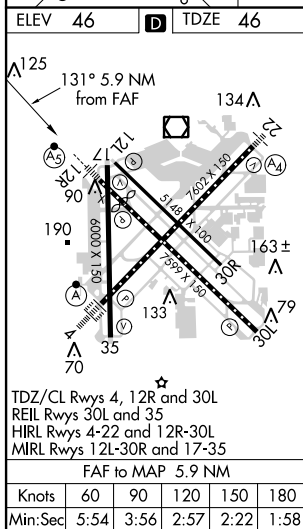
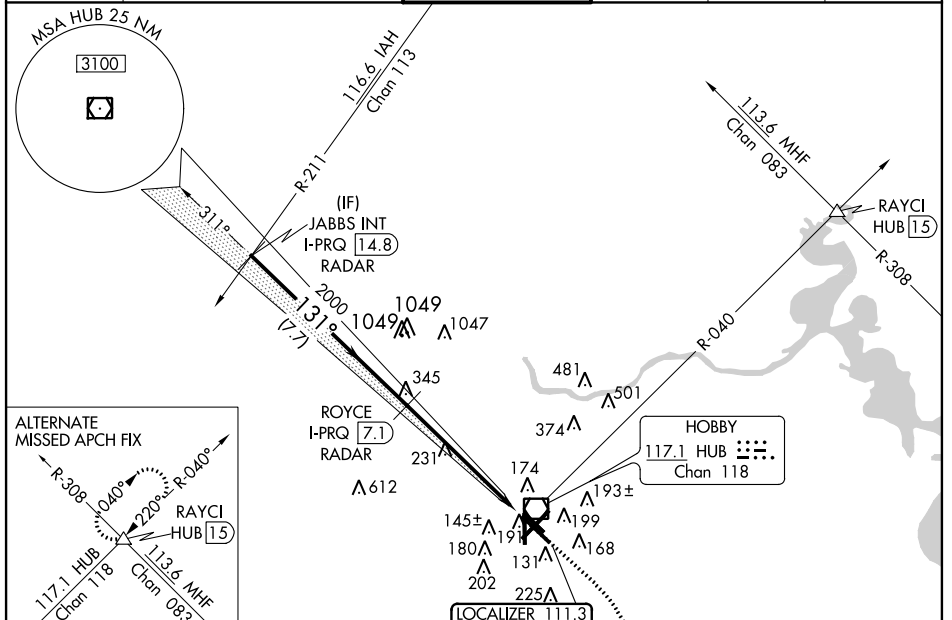
AL-198 (FAA)

16203

LOC/DME I-PRQ <b>111.3</b> Chan <b>50</b>	APP CRS <b>131°</b>	Rwy Idg <b>6565</b> TDZE <b>46</b> Apt Elev <b>46</b>
---	------------------------	---

# ILS or LOC RWY 12R WILLIAM P. HOBBY (HOU)

<div><div><div>▼</div><div>▲</div></div><div>Inop table does not apply to S-ILS 12R. DME or RADAR required. Helicopter visibility reduction below ¾ SM NA. For inop MALSR, increase S-LOC 12R Cat A and B visibility to RVR 5000 and Cat E to 1¾.</div></div>			<div>MALSR</div> <div><div><div>A5</div><div><div><div></div><div></div><div></div><div></div><div></div></div></div></div></div>	MISSED APPROACH: Climb to 800 then climbing right turn to 2200 direct VUH VORTAC.	
ATIS 124.6	HOUSTON APP CON 120.05 379.1 EAST 124.35 316.15 WEST	HOBBY TOWER 118.7 256.9	GND CON 121.9	CLNC DEL 125.45	CPDLC



RADAR REQUIRED					
JABBS INT I-PRQ [14.8] RADAR	ROYCE I-PRQ [7.1] RADAR	800	2200	VUH	
2000	2000	*I-PRQ [2.6]	*LOC only	I-PRQ [1.3]	
GS 3.00° TCH 49	7.7 NM	4.5 NM	1.4 NM		
CATEGORY	A	B	C	D	E
S-ILS 12R	296/40 250 (300-¾)				
S-LOC 12R	540/40	494 (500-¾)	540/50 494 (500-1)	540/60 494 (500-1¼)	
CIRCLING	540-1	494 (500-1)	540-1½ 494 (500-1½)	600-2 554 (600-2)	860-3 814 (900-3)

HOUSTON, TEXAS  
Amdt 12B 29MAY14

29°39'N-95°17'W

WILLIAM P. HOBBY (HOU)  
ILS or LOC RWY 12R

SC-5, 21 JUL 2016 to 18 AUG 2016

SC-5, 21 JUL 2016 to 18 AUG 2016



NM 1 2 3 4 5 6 7 8 9 10  
FT 8000 16000 24000 32000 40000 48000 56000 64000

fpowjh | khoucirc (PROD) | 18 Jul 2016 13:03:20 | 1" = 8333.3 feet (MAP)

**KHOU**  
**WILLIAM P. HOBBY**  
**HOUSTON, TX**  
**ILS OR LOC RWY 13R, AMDT 12C**  
**1:100,000**

- 7. CIRCLING CAT A, TOWER 199
- 8. CIRCLING CAT B, TOWER 205
- 9. CIRCLING CAT C, TOWER 225
- 10. CIRCLING CAT D, STACK 374
- 11. CIRCLING CAT E, STACK 501

