

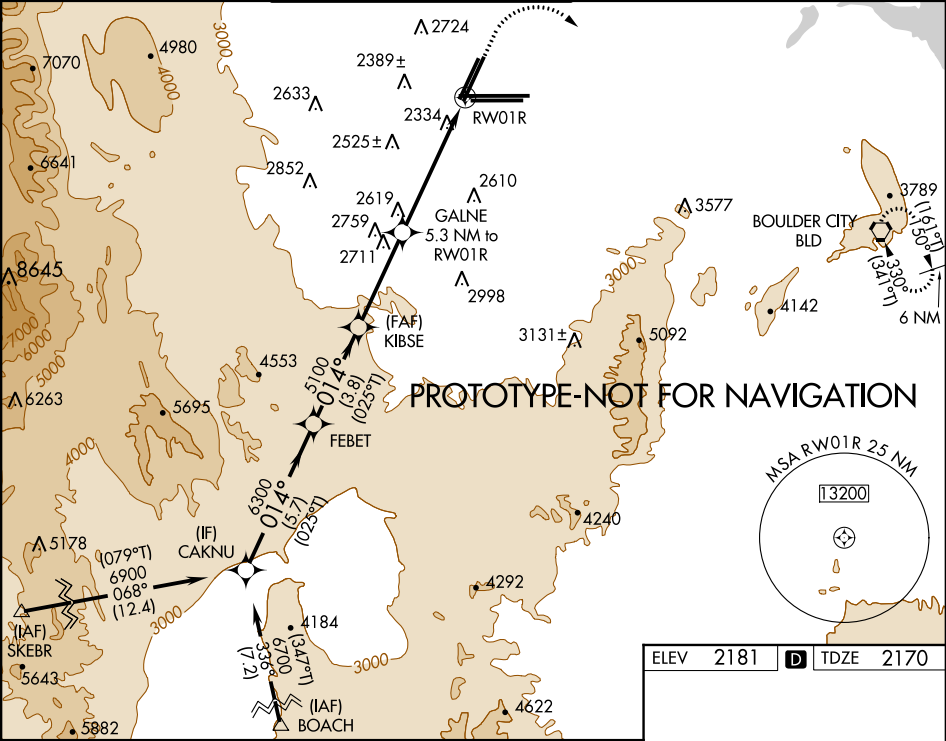
Flight Procedure Tracking Form		Action: FLIGHT CHECK	Task Type: IAP	Date Open: 04/03/2015	Task #: 2015040132125302004	Request #: 20150401321253
Procedure: RNAV (GPS) RWY 1R AMDT 2			Airport ID: KLAS	Airport: MC CARRAN INTL		Reimbursable #: NO
City: LAS VEGAS	ST: NV	GPS #:	Estimated Chart Date: 08/17/2017		FICO #:	
Fac ID: N/A		Fac. Type:			Specialist: LUCAS MCCLOUD	
Procedure Review						
	Rec'd	Rel'd	Full Name	Comments		
Lead:	12/22/2016					
QA:		5/23	CLARK			
Liaison:						
Procedure Comments: ENROUTE-NON Remark Type: INFORMATION TEAM PROJECT. PER FPT AND ATC REQUEST, DO NOT SLIP CHART DATE. ASSIGNED MAG VAR KLAS: OLD 15E - NEW 11E CONCURRENT PUBLICATION WITH ILS OR LOC RWY 26L, AMDT 6 (APT/ILS'S MV UPDATE). CONTACT: ROBERT HAMILTON 405-954-4608; AJV-5422 POC						



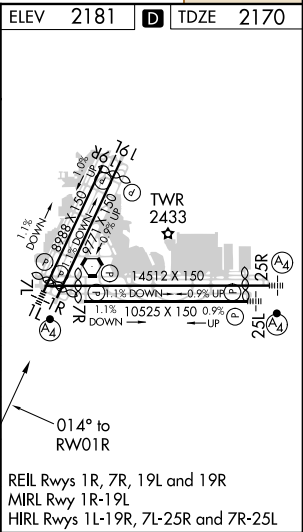
For uncompensated Baro-VNAV systems, LNAV/VNAV NA below -1°C (31°F) or above 52°C (126°F).
Rwy 1R helicopter visibility reduction below 3/4 SM NA.
DME/DME RNP-0.3 NA.

MISSED APPROACH: Climb to 2800 then climbing right turn to 6000 direct BLD VORTAC and hold, continue climb-in-hold to 6000.

D-ATIS	LAS VEGAS APP CON	LAS VEGAS TOWER	GND CON	CLNC DEL	CPDLC
132.4	125.025 379.15 (West) 125.6 282.2 (East)	118.75 257.8 (Rwy 1L/19R, 1R/19L) 119.9 257.8 (Rwy 7L/25R, 7R/25L)	121.1 270.8 E of 1R/19L 121.9 254.3 W of 1R/19L	118.0	



VGSi and RNAV glidepath not coincident (VGSi Angle 3.00/TCH 76).				
GP 3.00° TCH 60	CAKNU 6900 (025°T) 014°	FEBET 6300	KIBSE 5100	GALNE 5.3 NM to RWY 01R *1.9 NM to RWY 01R *3900
CATEGORY	A	B	C	D
LPV DA		2468-7/8	298 (300-7/8)	
LNAV/VNAV DA		2633-1 1/2	463 (500-1 1/2)	
LNAV MDA	2860-1	690 (700-1)	2860-2	690 (700-2)
CIRCLING	3020-1 1/4 839 (900-1 1/4)	3040-1 1/4 859 (900-1 1/4)	3100-2 3/4 919 (1000-2 3/4)	3540-3 1359 (1400-3)



EXISTING

LAS VEGAS, NEVADA

AL-662 (FAA)

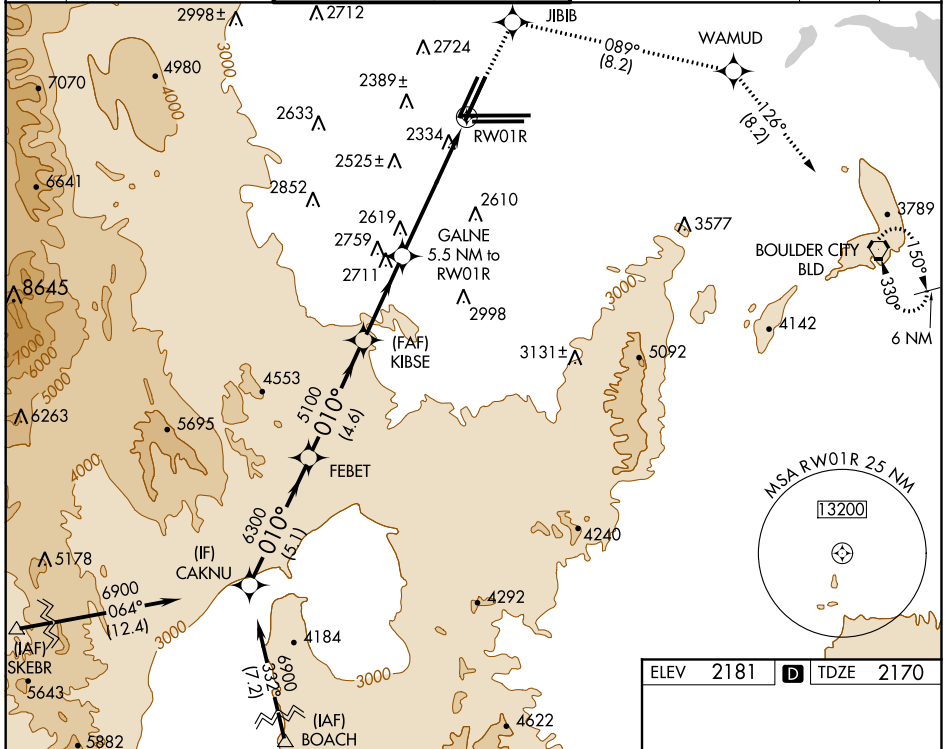
17061

WAAS CH 42800 W01A	APP CRS 010°	Rwy Idg TDZE Apt Elev 8677 2170 2181
----------------------------------------	------------------------	--------------------------------------------------------------------------

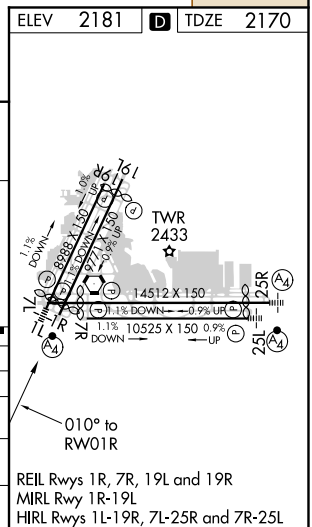
RNAV (GPS) RWY 1R MC CARRAN INTL (LAS)

	DME/DME RNP-0.3 NA.	MISSED APPROACH: Climb to 6000 direct JIBIB and via 089° track to WAMUD and via 126° track to BLD VORTAC and hold.
--	---------------------	--------------------------------------------------------------------------------------------------------------------

ATIS 132.4	LAS VEGAS APP CON 125.025 379.15 (West) 125.6 282.2 (East)	LAS VEGAS TOWER 118.75 257.8 (Rwy 1L/19R, 1R/19L) 119.9 257.8 (Rwy 7L/25R, 7R/25L)	GND CON 121.1 270.8 E of 1R/19L 121.9 254.3 W of 1R/19L	CLNC DEL 118.0	CPDLC
----------------------	--------------------------------------------------------------------------------	--------------------------------------------------------------------------------------------------------	-----------------------------------------------------------------------------	--------------------------	-------



VGSI and RNAV glidepath not coincident (VGSI Angle 3.00/TCH 76).				
<div> <div>6000</div> <div>JIBIB</div> <div>089° tr</div> <div>WAMUD</div> <div>126° tr</div> <div>BLD</div> </div>				
<div> <div>CAKNU</div> <div>FEBET</div> <div>KIBSE</div> <div>GALNE 5.5 NM to RW01R</div> <div>*2.1 NM to RW01R</div> <div>*4000</div> <div>5100</div> <div>6300</div> <div>6900</div> <div>010°</div> </div>				
<div> <div>Procedure</div> <div>Turn</div> <div>NA</div> <div>GP 3.00°</div> <div>TCH 50</div> </div>				
CATEGORY	A	B	C	D
LPV DA	2693-13/4			
LNAB/VNAV DA	NA			
LNAB MDA	2920-1 750 (800-1)	2920-1 1/4 750 (800-1 1/4)	2920-2 1/4 750 (800-2 1/4)	2920-2 1/2 750 (800-2 1/2)
CIRCLING	3080-1 1/4	899 (900-1 1/4)	3280-3	1099 (1100-3)



LAS VEGAS, NEVADA

Amtd 1A 12JAN12

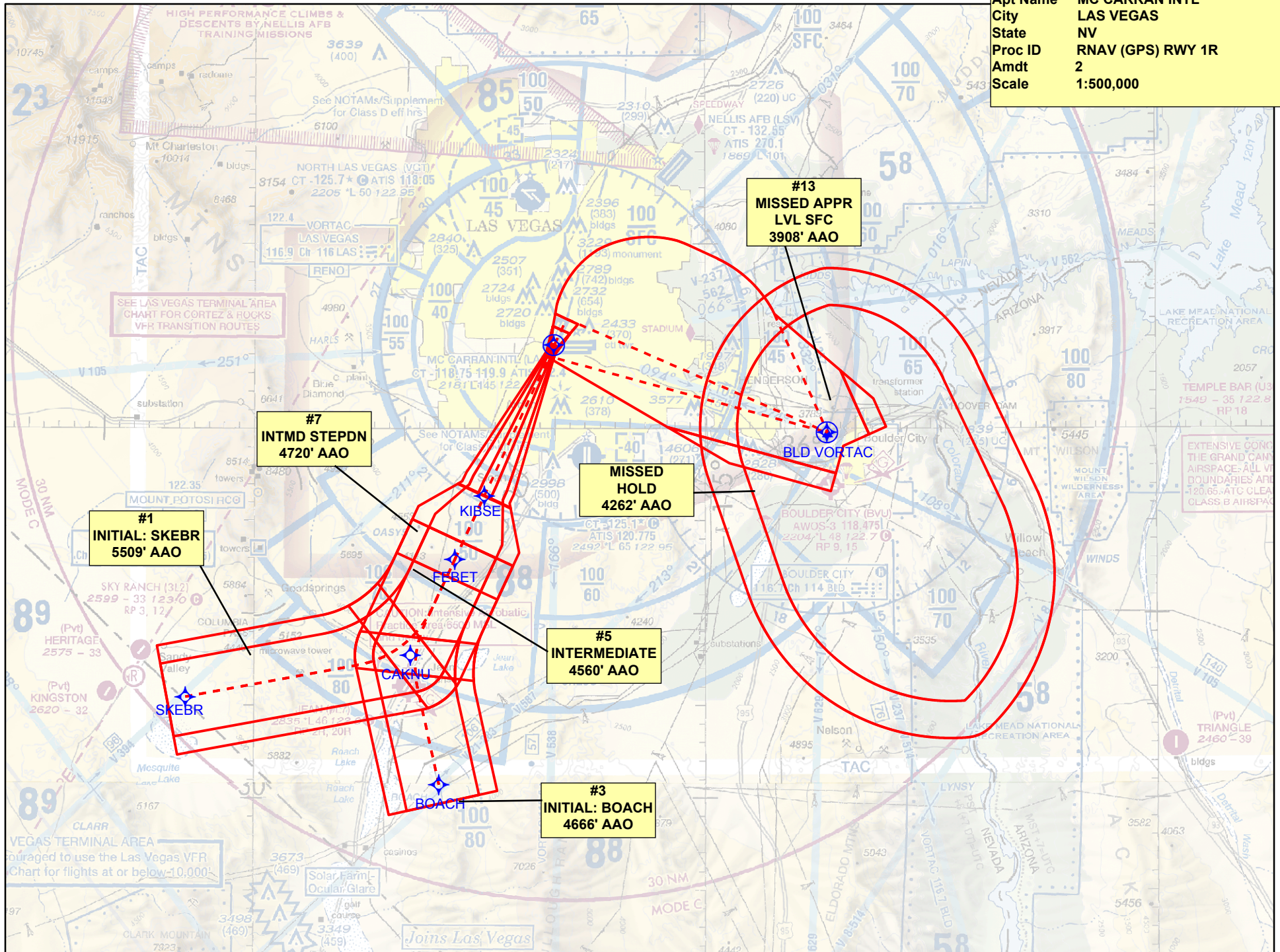
36°05'N-115°09'W

MC CARRAN INTL (LAS) RNAV (GPS) RWY 1R

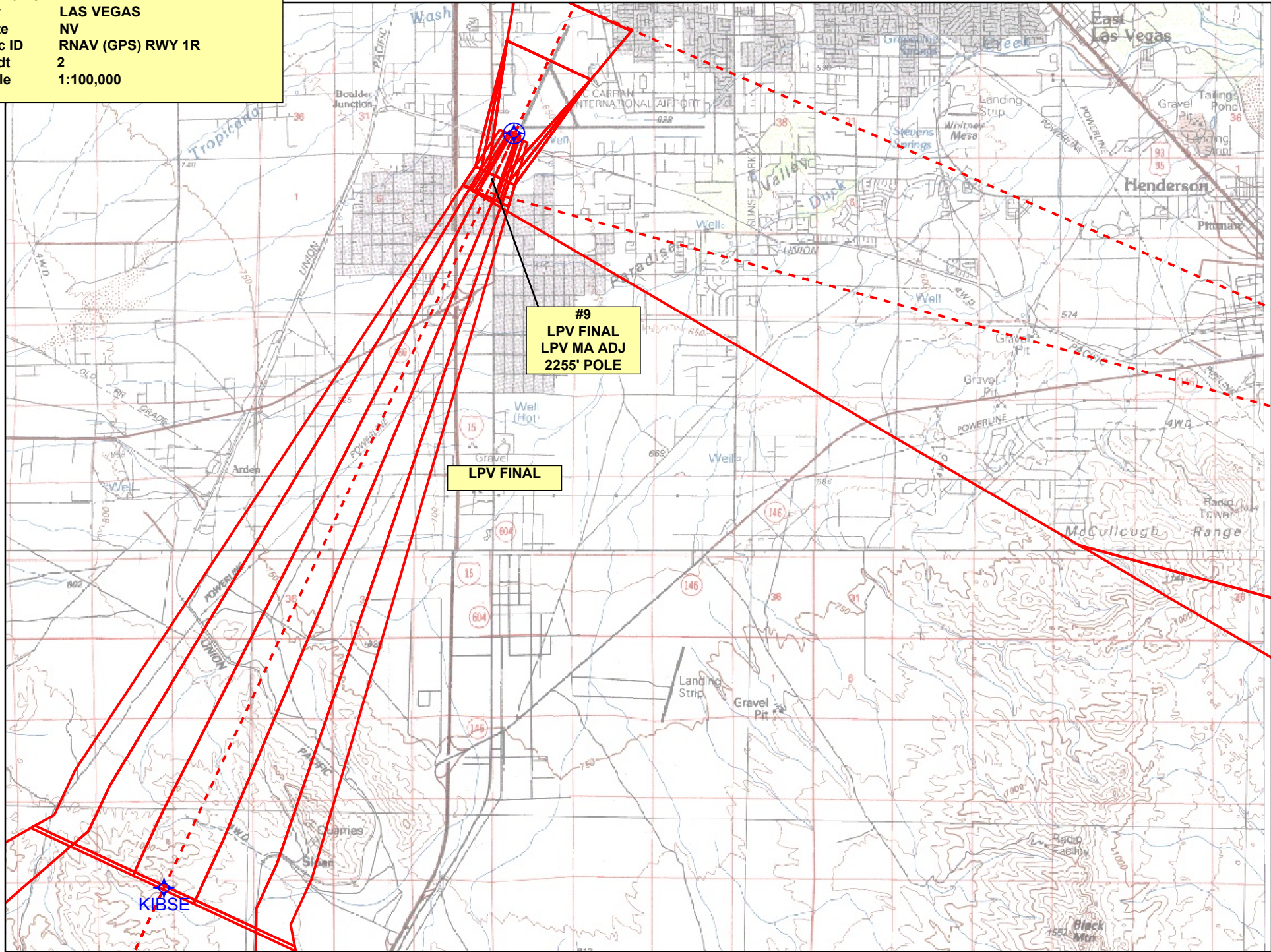
30 MAR 2017 to 27 APR 2017

30 MAR 2017 to 27 APR 2017

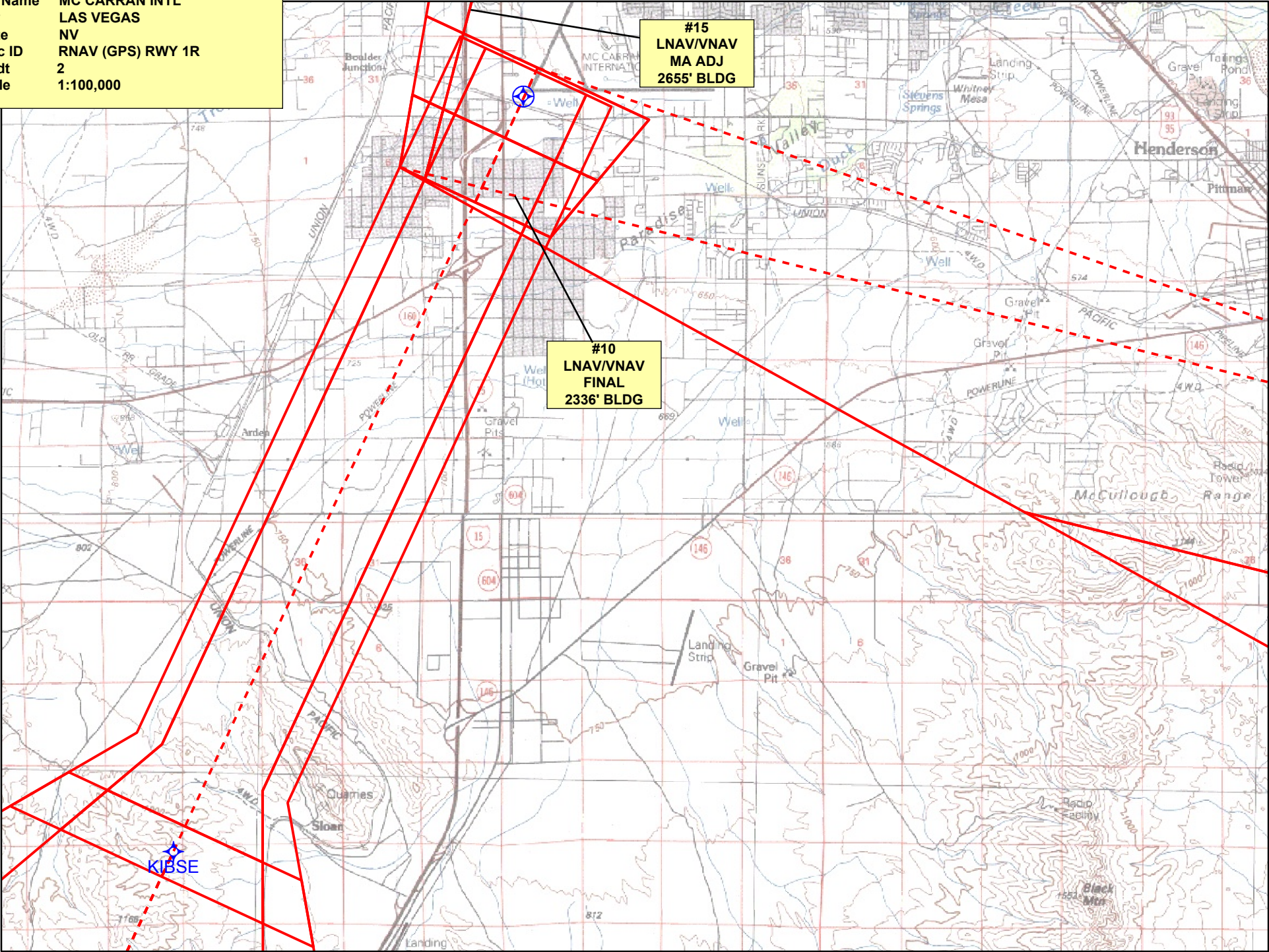
Airport ID	KLAS
Apt Name	MC CARRAN INTL
City	LAS VEGAS
State	NV
Proc ID	RNAV (GPS) RWY 1R
Amdt	2
Scale	1:500,000



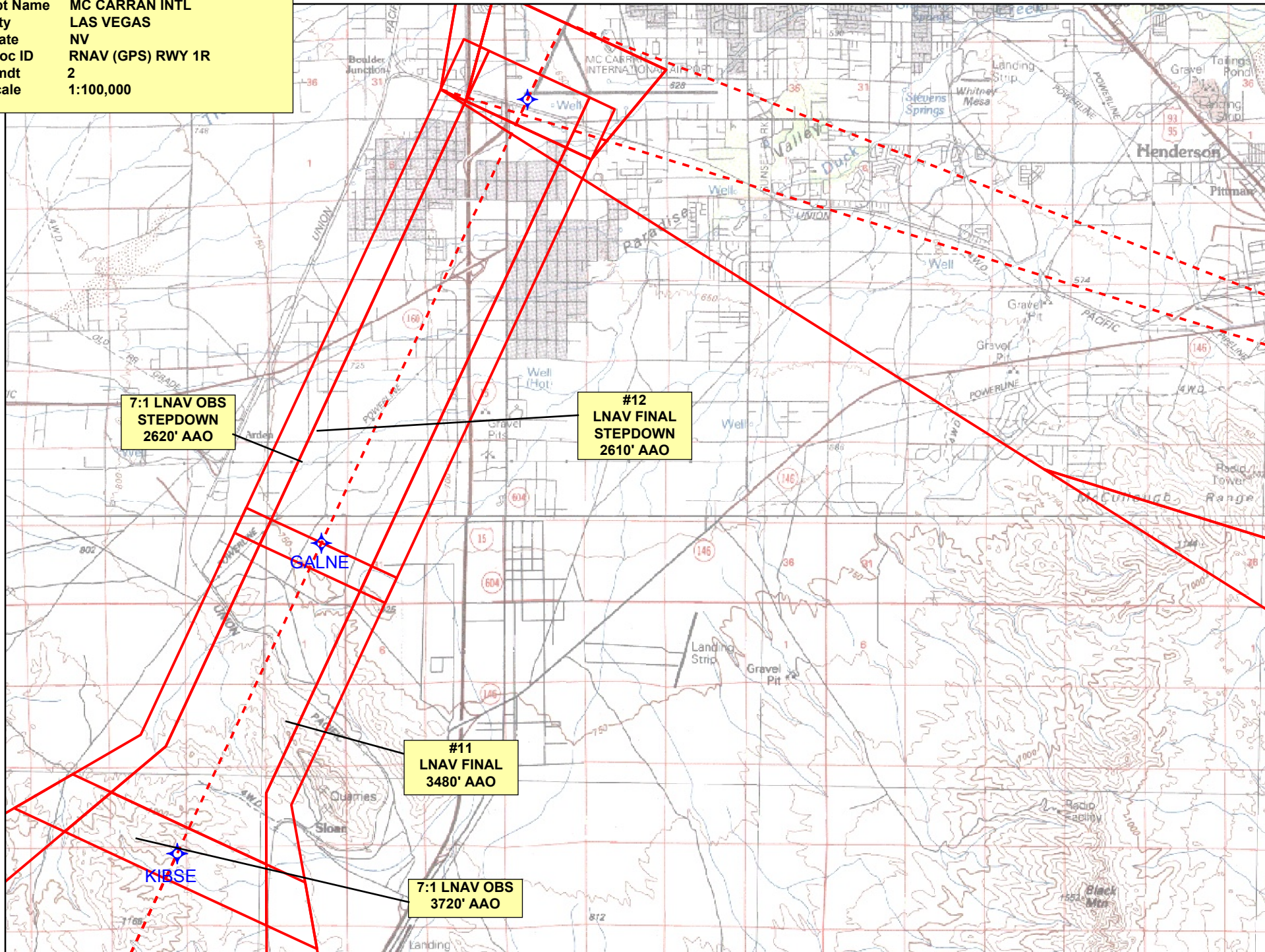
Airport ID	KLAS
Apt Name	MC CARRAN INTL
City	LAS VEGAS
State	NV
Proc ID	RNAV (GPS) RWY 1R
Amdt	2
Scale	1:100,000



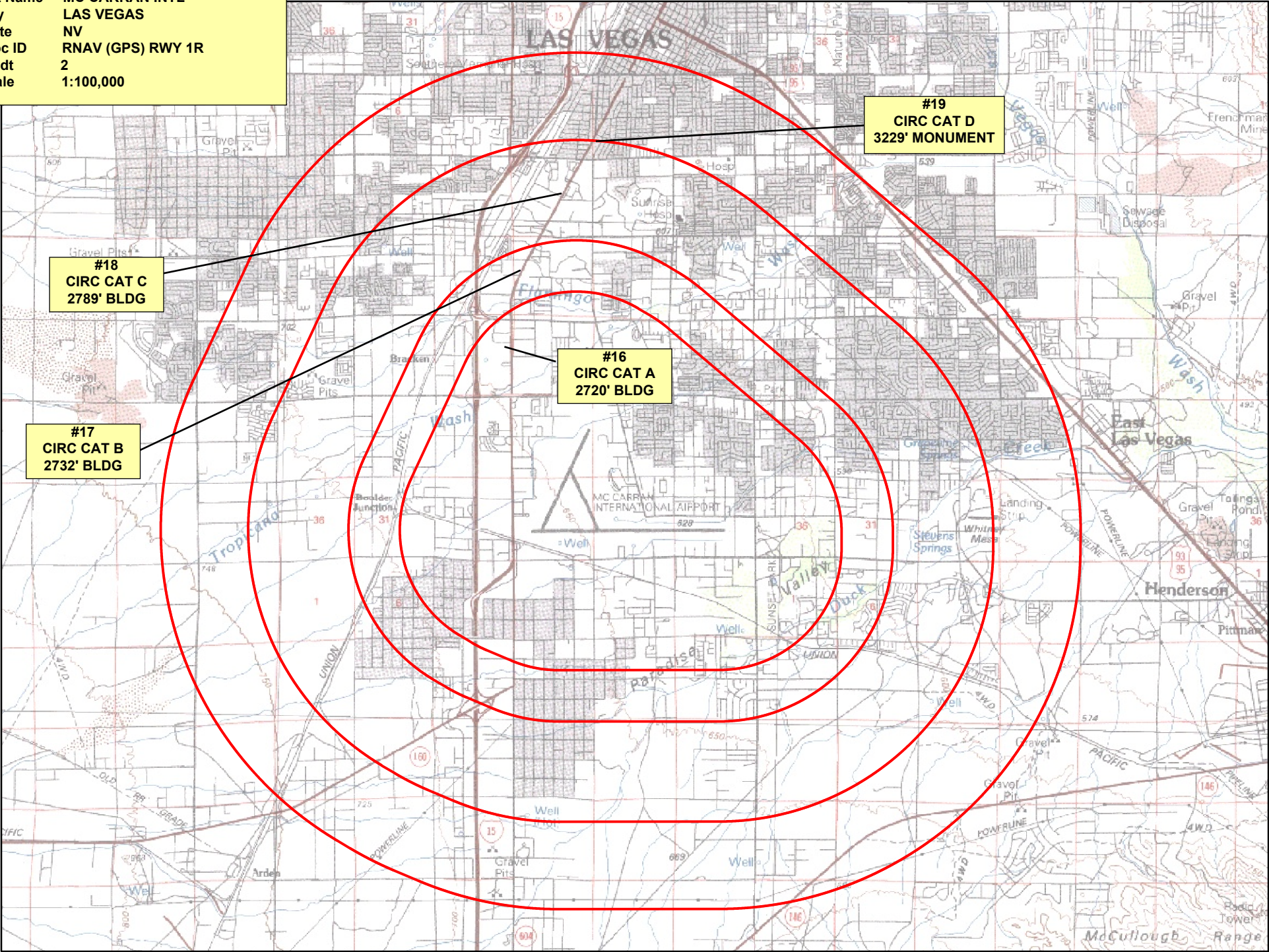
Airport ID KLAS
Apt Name MC CARRAN INTL
City LAS VEGAS
State NV
Proc ID RNAV (GPS) RWY 1R
Amdt 2
Scale 1:100,000



Airport ID	KLAS
Apt Name	MC CARRAN INTL
City	LAS VEGAS
State	NV
Proc ID	RNAV (GPS) RWY 1R
Amdt	2
Scale	1:100,000



Airport ID KLAS
Apt Name MC CARRAN INTL
City LAS VEGAS
State NV
Proc ID RNAV (GPS) RWY 1R
Amdt 2
Scale 1:100,000



#19
CIRC CAT D
3229' MONUMENT

#18
CIRC CAT C
2789' BLDG

#17
CIRC CAT B
2732' BLDG

#16
CIRC CAT A
2720' BLDG

TERMINAL AIRSPACE DATA REQUIREMENTS

CITY: **LAS VEGAS**

STATE: **NV**

AIRPORT NAME: **MC CARRAN INTL**

ID: **KLAS**

PROCEDURE: **RNAV (GPS) RWY 1R**

AMDT: **2**

DOCKET#: **NOT REQUIRED**

(96-AXX-X/Required/Not Required)

ALL DIST TO 1/100 NM; ELEV TO NEAREST FT; COORD TO 1/100 SEC; DEG TO 1/100 DG.

- | | | | |
|-------------------------------------------------------------------------------------------|---------------------------------|--------------------------------|---------------|
| 1. Distance from | <u>THLD</u> | to 1000' point | <u>6.34</u> |
| <small>(Enter THLD, FAF, ARP, FACILITY, as appropriate)</small> | | | |
| 2. Width of | <u>FINAL</u> | segment at 1000' point | <u>1.20</u> |
| <small>(Enter appropriate segment, final, intermediate, etc.)</small> | | | |
| 3. True Course of | <u>FINAL</u> | segment containing 1000' point | <u>024.87</u> |
| 4. High Terrain in | <u>FINAL</u> | segment containing 1000' point | <u>3280</u> |
| 5. Distance from | <u>THLD</u> | to 1500' point | <u>15.51</u> |
| <small>(If 1500' point in PT maneuvering area or holding pattern note in remarks)</small> | | | |
| 6. Width of | <u>INTERMEDIATE</u> | segment at 1500' point | <u>4.00</u> |
| 7. True Course of | <u>INTERMEDIATE</u> | segment containing 1500' point | <u>024.80</u> |
| 8. High Terrain in | <u>INTERMEDIATE</u> | segment containing 1500' point | <u>4360</u> |
| 9. Threshold Coordinates (if straight-in) ... | <u>360431.67N / 1151000.44W</u> | | |
| 10. ARP Coordinates | <u>360448.20N / 1150908.10W</u> | | |
| 11. Runway Approach End and distance furthest from ARP | RWY | <u>26R</u> | |
| | Distance | <u>1.53</u> | NM |
| 12. FAF Coordinates | <u>355620.52N / 1151440.95W</u> | | |

REMARKS: Approach/Drawing attached.

#9 is displaced threshold coordinates

Magnetic Variation (MV) Declination Request

☐ New Assignment ☒ Change

Requested by: JEFFREY ROBINSON

Organization: AJV-5421

Phone: 405-954-3736

Current Magnetic Declination of Record: 15 ° East

Epoch Year: 1980

New Magnetic Declination of Record: 11 ° East

Epoch Year: 2020

Airport Information Airport ID: KLAS NASR ID (if different):

Airport Name: MCCARRAN INTL

Airport City: LAS VEGAS

State/Country: NV

Navigational Aid Information [ALL Facility IDs and Types]

* Facilities on Airports. At airports with localizer(s) or more than one navigational aid, the MV at the airport reference point (ARP) must be designated and assigned to all facilities at that airport, including all components of the ILS.

I-LAS
I-RLE
I-CUA

Concurrent with Publication of Procedure(s), list all affected procedures and include the AMDT.#

* The Procedure Tracking System (PTS) has Task Report Type "MAGVAR" available. Please add the MAGVAR Report Type Code to all task listed that are affected by the MV update.

STAR CLARR THREE	ILS OR LOC RWY 26L AMDT 6	ODP LAS VEGAS AMDT 8
STAR CRESSO FOUR	ILS OR LOC RWY 26R AMDT 19	SID BOACH EIGHT (RNAV)
STAR FUZZY EIGHT	ILS OR LOC/DME RWY 1L AMDT 2	SID COWBOY SEVEN (RNAV)
STAR GRNPA TWO (RNAV)	RNAV (GPS) RWY 1R AMDT 2	SID HOOVER SIX (RNAV)
STAR KADDY THREE	RNAV (GPS) RWY 19L AMDT 2	SID LAS VEGAS FIVE (RNAV)
STAR KEPEC FIVE (RNAV)	RNAV (GPS) RWY 19R AMDT 2	SID MCCARRAN FIVE
STAR LUXOR THREE	VOR RWY 26 L/R AMDT 4	SID PRFUM FOUR (RNAV)
STAR SITEE TWO (RNAV)		SID SHEAD ONE (RNAV)
STAR SUNST FOUR (RNAV)		SID STAAV EIGHT (RNAV)
STAR TYSSN FIVE (RNAV)		SID TRALR EIGHT (RNAV)
		DVA LAS VEGAS ORIG

PTS Estimated Chart Date: 2017-08-17 - TPP

Comments:

PER FPT / MANAGEMENT, LAS VORTAC AND BLD VORTAC WILL NOT BE ROTATED AT THIS TIME.

Form Submission for Specialists:

Save this form to your computer, then email it
(as an attachment) to your Manager/Supervisor.

For Lead/Manager Use Only

Comments (if applicable):

Lead/Manager: ROBERT HAMILTON

Phone: 405-954-4608