

Flight Procedure Tracking Form		Action: FLIGHT CHECK	Task Type: SID	Date Open: 04/03/2015	Task #: 2015040132125301009	Request #: 20150401321253
Procedure: SID TRALR (RNAV) EIGHT LAS VEGAS NV KLAS			Airport ID: KLAS	Airport: MC CARRAN INTL		Reimbursable #: NO
City: LAS VEGAS	ST: NV	GPS #:	Estimated Chart Date: 08/17/2017		FICO #:	
Fac ID: N/A		Fac. Type:		Specialist: JEFFREY ROBINSON		
Procedure Review						
	Rec'd	Rel'd	Full Name	Comments		
Lead:	12/22/2016			QUALITY		
QA:				3		
Liaison:				CHECKED		
Procedure Comments:			ENROUTE	Remark Type: INFORMATION		
<p>PENDING DATA USED FOR AIRPORT AND RUNWAYS.</p> <p>ABBREVIATED AMENDMENT.</p> <p>RUNWAY NUMBER CHANGES -- 7L, 7R, 25L, 25R TO 8L, 8R, 26L, 26R RESPECTIVELY.</p> <p>ASSIGNED MAG VAR, KLAS: OLD 15E - NEW 11E.</p> <p>CONTACT: STEVE VARGAS, 405-954-0695.</p>						

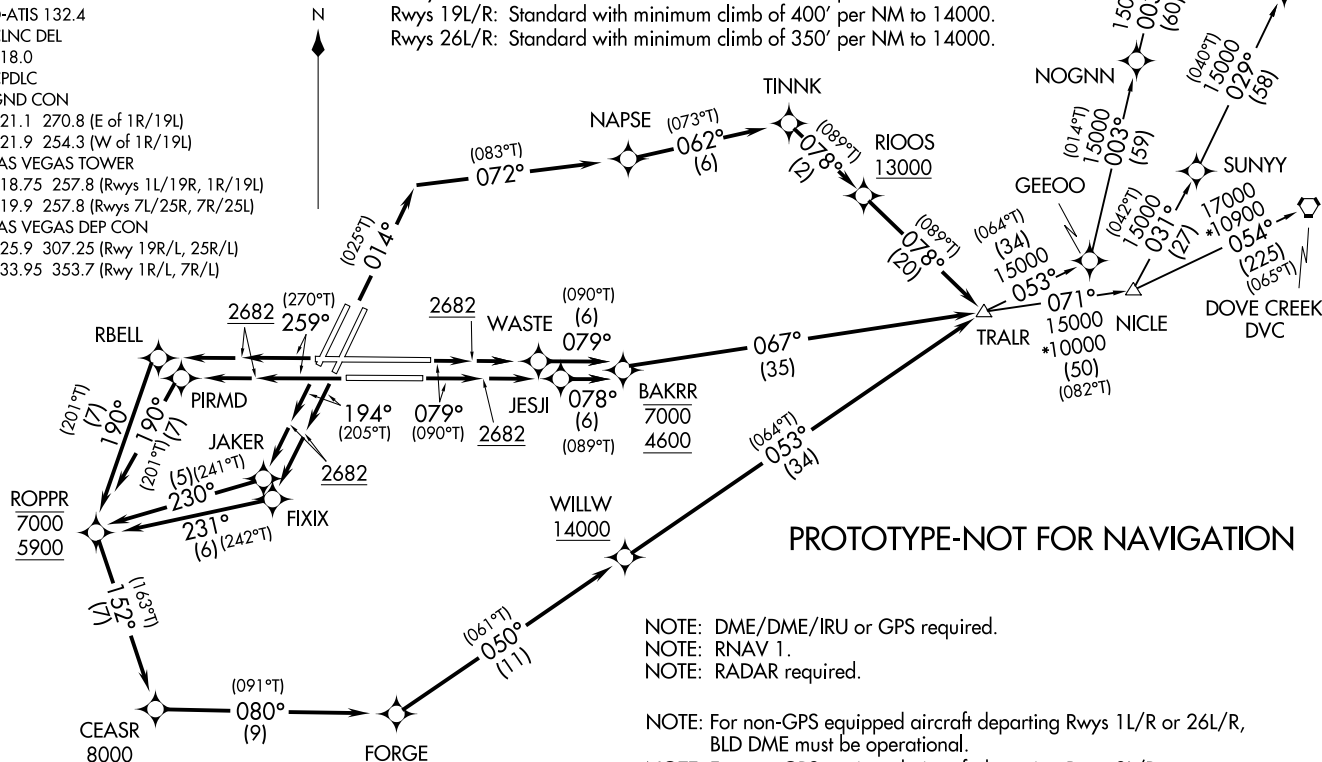
QUALITY
15
CHECKED

**TOP ALTITUDE:
FL190**

D-ATIS 132.4
CLNC DEL
118.0
CPDLC
GND CON
121.1 270.8 (E of 1R/19L)
121.9 254.3 (W of 1R/19L)
LAS VEGAS TOWER
118.75 257.8 (Rwys 1L/19R, 1R/19L)
119.9 257.8 (Rwys 7L/25R, 7R/25L)
LAS VEGAS DEP CON
125.9 307.25 (Rwy 19R/L, 25R/L)
133.95 353.7 (Rwy 1R/L, 7R/L)

TAKEOFF MINIMUMS

Rwys 1L/R: Standard with minimum climb of 321' per NM to 5100.
Rwys 8L/R: Standard with minimum climb of 310' per NM to 7000.
Rwys 19L/R: Standard with minimum climb of 400' per NM to 14000.
Rwys 26L/R: Standard with minimum climb of 350' per NM to 14000.



NOTE: DME/DME/IRU or GPS required.
NOTE: RNAV 1.
NOTE: RADAR required.

NOTE: For non-GPS equipped aircraft departing Rwys 1L/R or 26L/R,
BLD DME must be operational.
NOTE: For non-GPS equipped aircraft departing Rwys 8L/R,
LAS DME must be operational.

NOTE: Chart not to scale.

(NARRATIVE ON FOLLOWING PAGE)
(NOTES CONTINUED ON FOLLOWING PAGE)

▼

DEPARTURE ROUTE DESCRIPTION

TAKEOFF RUNWAYS 1L/R: Climb heading 014° to intercept course 072° to NAPSE, then on track 062° to TINNK, then on track 078° to cross RIOOS at or above 13000, then on track 078° to TRALR, thence. . . .

TAKEOFF RUNWAY 8L: Climb heading 079° to 2682, then direct WASTE, then on track 079° to cross BAKRR at or above 4600, at or below 7000, then on track 067° to TRALR, thence. . . .

TAKEOFF RUNWAY 8R: Climb heading 079° to 2682, then direct JESJI, then on track 078° to cross BAKRR at or above 4600, at or below 7000, then on track 067° to TRALR, thence. . . .

TAKEOFF RUNWAY 19L: Climb heading 194° to 2682, then direct FIXIX, then on track 231° to cross ROPPR at or above 5900, at or below 7000, then on track 152° to cross CEASR at or above 8000, then on track 080° to FORGE, then on track 050° to cross WILLW at or above 14000, then on track 053° to TRALR, thence. . . .

TAKEOFF RUNWAY 19R: Climb heading 194° to 2682, then direct JAKER, then on track 230° to cross ROPPR at or above 5900, at or below 7000, then on track 152° to cross CEASR at or above 8000, then on track 080° to FORGE, then on track 050° to cross WILLW at or above 14000, then on track 053° to TRALR, thence. . . .

TAKEOFF RUNWAY 26L: Climb heading 259° to 2682, then direct PIRMD, then on track 190° to cross ROPPR at or above 5900, at or below 7000, then on track 152° to cross CEASR at or above 8000, then on track 080° to FORGE, then on track 050° to cross WILLW at or above 14000, then on track 053° to TRALR, thence. . . .

TAKEOFF RUNWAY 26R: Climb heading 259° to 2682, then direct RBELL, then on track 190° to cross ROPPR at or above 5900, at or below 7000, then on track 152° to cross CEASR at or above 8000, then on track 080° to FORGE, then on track 050° to cross WILLW at or above 14000, then on track 053° to TRALR, thence. . . .

. . . .on (Transition) maintain FL190, expect filed altitude 10 minutes after departure.

DOVE CREEK TRANSITION (TRALR8.DVC)

MILFORD TRANSITION (TRALR8.MLF)

VERKN TRANSITION (TRALR8.VERKN)

PROTOTYPE-
NOT FOR NAVIGATION

TAKEOFF OBSTACLE NOTES

Rwy 1L: REIL 23' from DER, 153' left of centerline, 3' AGL/2090' MSL. Sign 1037' from DER, 695' left of centerline, 41' AGL/2125' MSL. Bldg 1556' from DER, 552' left of centerline, 2129' MSL. Bldg 1779' from DER, 649' left of centerline, 2147' MSL. Bldgs beginning 1907' from DER, 186' left of centerline, up to 2150' MSL. Bldgs beginning 1977' from DER, 214' left of centerline, up to 2150' MSL. Bldgs beginning 2095' from DER, 275' left of centerline, up to 83' AGL/2153' MSL. Bldgs beginning 3953' from DER, 1397' left of centerline, up to 162' AGL/2226' MSL. Bldg 4126' from DER, 1090' left of centerline, 2229' MSL. Bldg 4542' from DER, 1400' left of centerline, 183' AGL/2240' MSL. Bldg 4604' from DER, 1367' left of centerline, 186' AGL/2243' MSL.

Rwy 1R: Bldg 609' from DER 538' right of centerline, 28' AGL/2095' MSL. Sign 1336 from DER, 447' left of centerline, 60' AGL/2122' MSL.

Rwy 8L: Pole 744' from DER, 442' right of centerline, 30' AGL/2057' MSL. Tree 758' from DER, 168' right of centerline, 2068' MSL. Tree 767' from DER, 589' left of centerline, 2060' MSL. Tree 850' from DER, 184' left of centerline, 2067' MSL. Trees, beginning 886' from DER, 371' right of centerline, up to 2074' MSL.

Rwy 8R: Tower 1457' from DER, 848' left of centerline, 64' AGL/2097' MSL.

(NOTES CONTINUED ON FOLLOWING PAGE)

PROTOTYPE-NOT FOR NAVIGATION

TAKEOFF OBSTACLE NOTES

Rwy 19L: Railroad, pole beginning 952' from DER, 322' left of centerline, up to 2215' MSL. RR 1043' from DER, 178' left of centerline, 2218' MSL. RR, pole beginning 1122' from DER, 19' left of centerline, up to 2219' MSL. RR 1166' from DER, 75' right of centerline, 2220' MSL. RR 1219' from DER, 235' right of centerline, 2222' MSL. RR 1230' from DER, 281' right of centerline, 2223' MSL. Pole 1234' from DER, 178' left of centerline, 2221' MSL. RR 1241' from DER, 351' right of centerline, 2224' MSL. RR 1246' from DER, 489' right of centerline, 2225' MSL. RR, pole beginning 1247' from DER, 11' right of centerline, up to 2226' MSL. Poles, tree, vehicles on road, sign, parking lot beginning 1392' from DER, 115' right of centerline, up to 36' AGL/2238' MSL. Tree, pole beginning 1410' from DER, 9' left of centerline, up to 2232' MSL. Tree 1819' from DER, 124' left of centerline, 2236' MSL. Pole, tree, vehicles on road beginning 1824' from DER, 9' right of centerline, up to 34' AGL/2242' MSL. Pole 1933' from DER, 623' right of centerline, 34' AGL/2243' MSL. Pole, tree beginning 1936' from DER, 55' right of centerline, up to 36' AGL/2245' MSL. Pole, tree, parking lot beginning 2036' from DER, 386' right of centerline, up to 35' AGL/2246' MSL. Pole, parking lot, tree, vehicles on road beginning 2133' from DER, 183' right of centerline, up to 36' AGL/2247' MSL. Sign, tree, parking lot, vehicles on road, pole, bldg beginning 2179' from DER, 27' right of centerline, up to 2256' MSL. Pole 2229' from DER, 578' left of centerline, 2238' MSL. Poles beginning 2332' from DER, 583' left of centerline, up to 2240' MSL. Sign, tree, pole, parking lot, bldg beginning 2381' from DER, 53' right of centerline, up to 41' AGL/2257' MSL. Bldg, tree, pole beginning 2466' from DER, 591' right of centerline, up to 38' AGL/2258' MSL. Bldg, tree, poles, utility box beginning 2505' from DER, 157' right of centerline, up to 38' AGL/2259' MSL. Pole, bldg beginning 2738' from DER, 20' left of centerline, up to 2251' MSL. Bldg, tree beginning 2739' from DER, 1134' right of centerline, up to 57' AGL/2279' MSL. Bldg, tree beginning 2766' from DER, 869' right of centerline, up to 57' AGL/2280' MSL. Bldg, tree beginning 2822' from DER, 1006' right of centerline, up to 58' AGL/2281' MSL. Bldgs, tree, poles beginning 2861' from DER, 665' right of centerline, up to 59' AGL/2282' MSL. Bldgs, pole beginning 3418' from DER, 884' right of centerline, up to 61' AGL/2284' MSL. Bldg, pole beginning 3515' from DER, 424' right of centerline, up to 59' AGL/2287' MSL. Sign 5292' from DER, 1688' right of centerline, 55' AGL/2309' MSL. Bldg, pole beginning 5596' from DER, 1758' left of centerline, up to 110' AGL/2334' MSL. Communication twr 5717' from DER, 781' right of centerline, 80' AGL/2327' MSL. Bldg 2 NM from DER, 2897' left of centerline, 236' AGL/2491' MSL. Bldgs beginning 2 NM from DER, 2936' left of centerline, up to 241' AGL/2494' MSL.

Rwy 19R: Grd 60' from DER, 475' right of centerline, 2186' MSL. Grd 151' from DER, 529' right of centerline, 2190' MSL. Bldg 194' from DER, 444' right of centerline, 9' AGL/2199' MSL. NAVAID 262' from DER, 408' right of centerline, 14' AGL/2206' MSL. Vehicles on road, grd, control box beginning 348' from DER, 42' right of centerline, up to 2208' MSL. Pole, vehicles on road beginning 503' from DER, 434' right of centerline, up to 2218' MSL. Pole, sign, vehicles on road, flag pole, fence beginning 592' from DER, 277' right of centerline, up to 37' AGL/2234' MSL. Signs, parking lot, vehicles on road, bldg, pole, tree beginning 844' from DER, 266' right of centerline, up to 41' AGL/2240' MSL. Tower, fence, vehicles on road, sign beginning 961' from DER, 175' right of centerline, up to 41' AGL/2243' MSL. T-I twr, vehicles on road, railroad, pole, RR crossing signal control box, parking lot beginning 1132' from DER, 8' right of centerline, up to 47' AGL/2249' MSL. Railroad 1219' from DER, 701' left of centerline, 2222' MSL. Railroad 1230' from DER, 656' left of centerline, 2223' MSL. Railroad 1240' from DER, 585' left of centerline, 2224' MSL. Railroad 1246' from DER, 448' left of centerline, 2225' MSL. Railroad, pole beginning 1247' from DER, 76' left of centerline, up to 2226' MSL. Poles, tree, vehicles on road, sign beginning 1392' from DER, 15' left of centerline, up to 36' AGL/2238' MSL. Poles, tree, parking lot, bldg beginning 1726' from DER, 11' right of centerline, up to 2254' MSL. Pole, tree beginning 1823' from DER, 78' left of centerline, up to 34' AGL/2242' MSL. Pole 1933' from DER, 313' left of centerline, 34' AGL/2243' MSL. Pole, tree beginning 1935' from DER, 12' left of centerline, up to 36' AGL/2245' MSL. Pole, tree beginning 2036' from DER, 5' left of centerline, up to 35' AGL/2246' MSL. Poles, bldg, tree beginning 2043' from DER, 221' right of centerline, up to 2255' MSL. Pole, tree beginning 2133' from DER, 19' left of centerline, up to 36' AGL/2247' MSL. Tree, poles, sign, bldg beginning 2146' from DER, 14' right of centerline, up to 2259' MSL. Pole, bldg, tree beginning 2234' from DER, 12' left of centerline, up to 35' AGL/2249' MSL. Pole, tree beginning 2335' from DER, 88' left of centerline, up to 36' AGL/2250' MSL. Sign, tree, poles, bldg beginning 2381' from DER, 37' left of centerline, up to 41' AGL/2257' MSL. Pole, bldgs, tree beginning 2496' from DER, 5' right of centerline, up to 2274' MSL. Bldg beginning 2739' from DER, 196' right of centerline, up to 57' AGL/2279' MSL. Bldg, tree beginning 2766' from DER, 73' right of centerline, up to 57' AGL/2280' MSL. Bldg beginning 2767' from DER, 44' left of centerline, up to 36' AGL/2258' MSL. Bldg, tree beginning 2822' from DER, 68' right of centerline, up to 58' AGL/2281' MSL. Bldg, tree beginning 2861' from DER, 126' right of centerline, up to 59' AGL/2282' MSL. Bldgs, tree beginning 2893' from DER, 6' right of centerline, up to 2288' MSL. Bldg beginning 2895' from DER, 2' left of centerline, up to 39' AGL/2262' MSL. Bldgs, tree bldg beginning 3032' from DER, 301' right of centerline, up to 61' AGL/2290' MSL. Bldgs, tree, pole beginning 3076' from DER, 58' right of centerline, up to 61' AGL/2291' MSL. Bldgs, sign, poles beginning 3459' from DER, 287' right of centerline, up to 74' AGL/2302' MSL. Bldg 3495' from DER, 53' left of centerline, 52' AGL/2278' MSL. Communication twr 5717' from DER, 156' left of centerline, 80' AGL/2327' MSL.

(NOTES CONTINUED ON FOLLOWING PAGE)

TAKEOFF OBSTACLE NOTES**PROTOTYPE-NOT FOR NAVIGATION**

- Rwy 25L: Bldg 1002' from DER, 250' left of centerline, 6' AGL/2183' MSL. Railroad, pole beginning 1857' from DER, 793' left of centerline, up to 2215' MSL. Railroad 2068' from DER, 796' left of centerline, 2218' MSL. Pole, railroad beginning 2148' from DER, 800' left of centerline, up to 2221' MSL. Tree, railroad beginning 2376' from DER, 780' left of centerline, up to 2232' MSL. Tree, railroad beginning 2528' from DER, 751' left of centerline, up to 2233' MSL. Pole 2861' from DER, 811' left of centerline, 36' AGL/2238' MSL. Pole 3167' from DER, 1144' left of centerline, 34' AGL/2242' MSL. Pole 3171' from DER, 1091' left of centerline, 34' AGL/2243' MSL. Pole 3313' from DER, 1200' left of centerline, 35' AGL/2246' MSL. Sign, t-l twr beginning 3672' from DER, 145' left of centerline, up to 2256' MSL. Pole, bldg beginning 4223' from DER, 1389' left of centerline, up to 2274' MSL. Bldg 4554' from DER, 1593' left of centerline, 2277' MSL. Bldg 4687' from DER, 1685' left of centerline, 53' AGL/2279' MSL. Bldg 4719' from DER, 1754' left of centerline, 61' AGL/2290' MSL. Bldg 4954' from DER, 1694' left of centerline, 61' AGL/2291' MSL. Trmsn twr 5469' from DER, 1056' left of centerline, 2297' MSL. Pole 5879' from DER, 1519' left of centerline, 2309' MSL. Pole 6019' from DER, 2022' right of centerline, 101' AGL/2309' MSL. Pole 1 NM from DER, 1720' left of centerline, 46' AGL/2311' MSL. Pole 1 NM from DER, 1922' left of centerline, 45' AGL/2311' MSL. Tower 1.1 NM from DER, 1843' left of centerline, 80' AGL/2332' MSL. Pole 1.8 NM from DER, 1817' left of centerline, 131' AGL/2435' MSL.
- Rwy 25R: NAVAIDs, bldg beginning 533' from DER, 367' left of centerline, up to 14' AGL/2206' MSL. NAVAIDs beginning 533' from DER, on centerline, up to 5' AGL/2195' MSL. Vehicles on road beginning 666' from DER, crossing left and right of centerline, up to 2208' MSL. Pole 785' from DER, 592' left of centerline, 2218' MSL. Pole, tree beginning 786' from DER, 8' left of centerline, up to 2220' MSL. Trees beginning 821' from DER, 49' right of centerline, up to 25' AGL/2214' MSL. Pole, sign, tree, bldg beginning 873' from DER, 347' left of centerline, up to 37' AGL/2234' MSL. Trees beginning 952' from DER, 48' right of centerline, up to 2233' MSL. Pole, tree, railroad beginning 1093' from DER, 531' left of centerline, up to 38' AGL/2237' MSL. Trees beginning 1559' from DER, 555' right of centerline, up to 2259' MSL. Tree, bldg, railroad beginning 1812' from DER, 191' left of centerline, up to 2246' MSL. Bldg 2501' from DER, 881' left of centerline, 2254' MSL. Poles beginning 3002' from DER, 543' left of centerline, up to 44' AGL/2271' MSL. Poles beginning 3005' from DER, 743' left of centerline, up to 48' AGL/2277' MSL. Pole 3116' from DER, 1022' right of centerline, 101' AGL/2309' MSL. Sign 3339' from DER, 278' left of centerline, up to 2286' MSL. Communication twr 4521' from DER, 704' right of centerline, 2332' MSL. Sign 1.3 NM from DER, 2649' left of centerline, 80' AGL/2384' MSL. Pole 1.5 NM from DER, 2801' left of centerline, 100' AGL/2444' MSL. Pole 1.6 NM from DER, 2832' left of centerline, up to 100' AGL/2455' MSL. Pole, communication twr beginning 1.7 NM from DER, 2068' left of centerline, up to 100' AGL/2463' MSL. Pole 1.7 NM from DER, 2845' left of centerline, 135' AGL/2469' MSL. Transmission twr 2.1 NM from DER, 3453' left of centerline, 134' AGL/2490' MSL.



DEPARTURE ROUTE DESCRIPTION

TAKEOFF RUNWAYS 1L/R: Climb heading 010° to intercept course 068° to NAPSE, then on track 058° to TINNK, then on track 074° to cross RIOOS at or above 13000, then on track 074° to TRALR, thence. . . .

TAKEOFF RUNWAY 7L: Climb heading 075° to 2682, then direct WASTE, then on track 075° to cross BAKRR at or above 4600, at or below 7000, then on track 063° to TRALR, thence. . . .

TAKEOFF RUNWAY 7R: Climb heading 075° to 2682, then direct JESJI, then on track 074° to cross BAKRR at or above 4600, at or below 7000, then on track 063° to TRALR, thence. . . .

TAKEOFF RUNWAY 19L: Climb heading 190° to 2682, then direct FIXIX, then on track 227° to cross ROPPR at or above 5900, at or below 7000, then on track 148° to cross CEASR at or above 8000, then on track 076° to FORGE, then on track 046° to cross WILLW at or above 14000, then on track 049° to TRALR, thence. . . .

TAKEOFF RUNWAY 19R: Climb heading 190° to 2682, then direct JAKER, then on track 226° to cross ROPPR at or above 5900, at or below 7000, then on track 148° to cross CEASR at or above 8000, then on track 076° to FORGE, then on track 046° to cross WILLW at or above 14000, then on track 049° to TRALR, thence. . . .

TAKEOFF RUNWAY 25L: Climb heading 255° to 2682, then direct PIRMD, then on track 186° to cross ROPPR at or above 5900, at or below 7000, then on track 148° to cross CEASR at or above 8000, then on track 076° to FORGE, then on track 046° to cross WILLW at or above 14000, then on track 049° to TRALR, thence. . . .

TAKEOFF RUNWAY 25R: Climb heading 255° to 2682, then direct RBELL, then on track 186° to cross ROPPR at or above 5900, at or below 7000, then on track 148° to cross CEASR at or above 8000, then on track 076° to FORGE, then on track 046° to cross WILLW at or above 14000, then on track 049° to TRALR, thence. . . .

. . . .on (Transition) maintain FL190, expect filed altitude 10 minutes after departure.

DOVE CREEK TRANSITION (TRALR7.DVC)

MILFORD TRANSITION (TRALR7.MLF)

VERKN TRANSITION (TRALR7.VERKN)

TAKEOFF OBSTACLE NOTES

Rwy 1L: REIL 23' from DER, 153' left of centerline, 3' AGL/2090' MSL. Sign beginning 1037' from DER, 694' left of centerline, up to 2125' MSL. Bldg 1556' from DER, 551' left of centerline, 2129' MSL. Bldg 1779' from DER, 648' left of centerline, 2147' MSL. Bldgs beginning 1907' from DER, 186' left of centerline, up to 2150' MSL. Bldgs, beginning 1977' from DER, 214' left of centerline, up to 2150' MSL. Bldgs beginning 1983' from DER, 251' left of centerline, up to 2150' MSL. Bldg 2093' from DER, 333' left of centerline, 78' AGL/2150' MSL. Bldgs, beginning 2095' from DER, 274' left of centerline, up to 83' AGL/2153' MSL. Bldgs, beginning 3953' from DER, 1396' left of centerline, up to 162' AGL/2226' MSL. Bldg 4126' from DER, 1089' left of centerline, 2229' MSL. Bldg 4542' from DER, 1399' left of centerline, 183' AGL/2240' MSL. Bldg 4604' from DER, 1365' left of centerline, 186' AGL/2243' MSL.

(NOTES CONTINUED ON FOLLOWING PAGE)

TAKEOFF OBSTACLE NOTES

- Rwy 1R: Sign 1336 from DER, 447' left of centerline, 60' AGL/2122' MSL.
Bldg 609' from DER 539' right of centerline, 28' AGL/2095' MSL.
- Rwy 7L: Pole 744' from DER, 442' right of centerline, 30' AGL/2057' MSL.
Tree 758' from DER, 168' right of centerline, 2068' MSL. Tree 768' from DER,
589' left of centerline, 2060' MSL. Tree 850' from DER, 184' left of centerline,
2067' MSL. Trees, beginning 886' from DER, 372' right of centerline, up to 2074' MSL.
- Rwy 7R: Tower 1457' from DER, 849' left of centerline, 64' AGL/2097' MSL.
- Rwy 19L: Ground 60' from DER, 475' right of centerline, 2186' MSL. Ground 151' from DER, 529' right
of centerline, 2190' MSL. Building beginning 193' from DER, 443' right of centerline, up to 9'
AGL/2199' MSL. Obstacle light on DME, Navaid, beginning 261' from DER, 407' right of
centerline, up to 2206' MSL. Vehicles on road, Ground, control box, beginning 348' from DER,
41' right of centerline, up to 2208' MSL. Pole, vehicles on road, beginning 502' from DER, 434'
right of centerline, up to 2218' MSL. Pole, sign, vehicles on road, flag pole, fence, beginning
592' from DER, 277' right of centerline, up to 37' AGL/2234' MSL. Sign, building, pole, tree,
beginning 844' from DER, 265' right of centerline, up to 41' AGL/2240' MSL. Tower, fence,
Sign beginning 961' from DER, 175' right of centerline, up to 41' AGL/2243' MSL. Transmisison
line Tower, pole, rail road, rail road crossing sign, vehicles on parking lot, beginning 1132'
from DER, 7' right of centerline, up to 47' AGL/2249' MSL. Railroad beginning 1219' from
DER, 448' left of centerline, up to 2225' MSL. Rail road, pole beginning 1247' from DER, 76' left
of centerline, up to 2226' MSL. Tree, poles, sign beginning 1392' from DER, 14' left of centerline,
up to 36' AGL/2238' MSL. Poles, tree, vehicles on parking lot, building beginning 1726' from
DER, 10' right of centerline, up to 2254' MSL. Pole, tree, beginning 1822' from DER, 79' left of
centerline, up to 34' AGL/2243' MSL. Obstacle light, tree, beginning 1935' from DER, 12' left of
centerline, up to 36' AGL/2245' MSL. Pole, tree, beginning 2036' from DER, 5' left of centerline,
up to 35' AGL/2246' MSL. Poles, buildings, tree, beginning 2043' from DER, 220' right of
centerline, up to 2255' MSL. Pole, tree, beginning 2133' from DER, 20' left of centerline, up to
36' AGL/2247' MSL. Tree, poles, sign, building, beginning 2146' from DER, 13' right of
centerline, up to 2259' MSL. Pole, building, tree, beginning 2234' from DER, 13' left of centerline,
up to 35' AGL/2249' MSL. Pole, tree, beginning 2335' from DER, 88' left of centerline, up to 36'
AGL/2250' MSL. Sign, tree, pole, building beginning 2381' from DER, 38' left of centerline, up to
41' AGL/2257' MSL. Pole, Building, tree, Building beginning 2496' from DER, 5' right of
centerline, up to 2274' MSL. Buildings beginning 2738' from DER, 196' right of centerline, up to
57' AGL/2279' MSL. Building, tree, beginning 2766' from DER, 73' right of centerline, up to 57'
AGL/2280' MSL. Buildings beginning 2767' from DER, 45' left of centerline, up to 36' AGL/
2258' MSL. Buildings, tree, beginning 2893' from DER, 6' right of centerline, up to 2288' MSL.
Buildings beginning 2895' from DER, 3' left of centerline, up to 39' AGL/2262' MSL. Buildings,
tree, beginning 3032' from DER, 300' right of centerline, up to 61' AGL/2290' MSL. Buildings,
tree, pole, beginning 3076' from DER, 57' right of centerline, up to 61' AGL/2291' MSL.
Buildings, sign, poles, beginning 3459' from DER, 286' right of centerline, up to 74' AGL/2302'
MSL. Building 3495' from DER, 54' left of centerline, 52' AGL/2278' MSL. Communication
tower 5717' from DER, 157' left of centerline, 80' AGL/2327' MSL. Building 5358' from DER,
1759' left of centerline, 110' AGL/2334' MSL.
- Rwy 19R: Building 609' from DER, 538' right of centerline, 28' AGL/2095' MSL. Sign 1336' from DER,
447' right of centerline, 60' AGL/2122' MSL.

(NOTES CONTINUED ON FOLLOWING PAGE)

SW-4, 02 MAR 2017 to 30 MAR 2017

SW-4, 02 MAR 2017 to 30 MAR 2017

TAKEOFF OBSTACLE NOTES

- Rwy 25L: Building, 1002' from DER, 250' left of centerline, 6' AGL/2183' MSL. Railroad, pole beginning 1856' from DER, 794' left of centerline, up to 2215' MSL. Railroad 2067' from DER, 796' left of centerline, 2218' MSL. Pole, railroad, beginning 2148' from DER, 800' left of centerline, up to 2221' MSL. Tree, railroad, beginning 2375' from DER, 781' left of centerline, up to 2232' MSL. Tree, railroad, beginning 2527' from DER, 751' left of centerline, up to 2233' MSL. Pole 2860' from DER, 812' left of centerline, 36' AGL/2238' MSL. Pole, beginning 3166' from DER, 1092' left of centerline, up to 34' AGL/2243' MSL. Pole, beginning 3312' from DER, 1201' left of centerline, up to 35' AGL/2246' MSL. Sign, pole, Transmission Line Tower, beginning 3672' from DER, 146' left of centerline, up to 2256' MSL. Pole, beginning 4223' from DER, 1394' left of centerline, up to 2274' MSL. Bldg 4554' from DER, 1594' left of centerline, 2277' MSL. Bldg 4686' from DER, 1686' left of centerline, 53' AGL/2279' MSL. Bldg 4718' from DER, 1756' left of centerline, 61' AGL/2290' MSL. Bldg 4953' from DER, 1696' left of centerline, 61' AGL/2291' MSL. Transmission Tower 5469' from DER, 1057' left of centerline, 2297' MSL. Pole, beginning 5703' from DER, 2020' right of centerline, up to 101' AGL/2309' MSL. Pole 5887' from DER, 1923' left of centerline, 45' AGL/2311' MSL. Pole 5889' from DER, 1722' left of centerline, 46' AGL/2311' MSL. Tower, 1 NM from DER, 1845' left of centerline, 80' AGL/2332' MSL.
- Rwy 25R: Obstacle light on DME, Navaid, Bldg, beginning 533' from DER, 367' left of centerline, up to 2206' MSL. Navaid, Obstacle light on LOC, beginning 533' from DER, on centerline, up to 5' AGL/2195' MSL. Vehicle on road, 665' from DER, crossing centerline, 2208' MSL. Pole 785' from DER, 592' left of centerline, 2218' MSL. Pole tree, beginning 785' from DER, 8' left of centerline, up to 2220' MSL. Trees beginning 820' from DER, 49' right of centerline, up to 25' AGL/2214' MSL. Pole sign, tree, building beginning 873' from DER, 348' left of centerline, up to 37' AGL/2234' MSL. Trees beginning 952' from DER, 48' right of centerline up to 2233' MSL. Pole, tree, railroad, beginning 1092' from DER, 531' left of centerline, up to 38' AGL/2237' MSL. Trees, beginning 1559' from DER, 554' right of centerline, up to 2259' MSL. Tree, building, railroad, beginning 1811' from DER, 192' left of centerline, up to 2246' MSL. Bldg 2500' from DER, 882' left of centerline, 2254' MSL. Pole, beginning 3001' from DER, 544' left of centerline, up to 44' AGL/2271' MSL. Pole, beginning 3004' from DER, 770' left of centerline, up to 48' AGL/2277' MSL. Pole beginning 3116' from DER, 1021' right of centerline, up to 2309' MSL. Sign, beginning 3338' from DER, 279' left of centerline, up to 2286' MSL. Communication Tower 4521' from DER, 703' right of centerline, 2332' MSL. Pole 1.4 NM from DER, 2804' left of centerline, 100' AGL/2444' MSL. Pole, beginning 1.5 NM from DER, 2835' left of centerline, up to 100' AGL/2455' MSL. Pole, communication Tower, beginning 1.6 NM from DER, 2072' left of centerline, up to 100' AGL/2463' MSL. Pole 1.7 NM from DER, 2964' left of centerline, 135' AGL/2469' MSL.

SW-4, 02 MAR 2017 to 30 MAR 2017

SW-4, 02 MAR 2017 to 30 MAR 2017