

Flight Procedure Tracking Form		Action: FLIGHT CHECK	Task Type: TEXTUAL DP	Date Open: 05/11/2015	Task #: 2015030619494702001	Request #: 20150306194947
Procedure: NULATO AK PANU AMDT 1				Airport ID: PANU	Airport: NULATO	Reimbursable #: NO
City: NULATO	ST: AK	GPS #:	Estimated Chart Date: 01/05/2017		FICO #:	
Fac ID: N/A		Fac. Type:			Specialist: MIKE MELSSSEN	
Procedure Review						
	Rec'd	Rel'd	Full Name	Comments		
Lead:	04/26/2016					
QA:						
Liaison:						
Procedure Comments: ENROUTE-NON Remark Type: INFORMATION ASSIGNED MAG/VAR: PANU: OLD 18E - NEW 13E. PENDING DATA USED FOR PANU AIRPORT AND RUNWAYS. CONTACTS: LONNIE EVERHART/BEV BORDY; AJV-5430 LEADS; 405.954.4576/8293.						



16203

TAKEOFF MINIMUMS, (OBSTACLE) DEPARTURE PROCEDURES, AND DIVERSE VECTOR AREA (RADAR VECTORS)

L16



NORTHWAY, AK

NORTHWAY (ORT) (PAOR)

TAKEOFF MINIMUMS AND (OBSTACLE)
DEPARTURE PROCEDURES

AMDT 2 07018 (FAA)

DEPARTURE PROCEDURE: **Rwy 5**, climbing right turn to 4000 via ORT R-100, then climbing right turn to 8000 direct ORT VORTAC, continue climb in ORT VORTAC holding pattern (West, right turn, 108° inbound) to 8000 before proceeding on course. . . **Rwy 23**, climbing left turn to 4000 via ORT R-170, then climbing left turn to 8000 direct ORT VORTAC, continue climb in ORT VORTAC holding pattern (West, right turn, 108° inbound) to 8000 before proceeding on course. . .
. . .continue climb via assigned route.

NOTE: **Rwy 5**, multiple trees beginning 1133' from DER, 727' right of centerline, up to 60' AGL/1859' MSL. Multiple trees beginning 3881' from DER, 1522' left of centerline, up to 60' AGL/1859' MSL. **Rwy 23**, multiple trees beginning 777' from DER, 560' left of centerline, up to 60' AGL/1809' MSL. Multiple trees beginning 1365' from DER, 527' right of centerline, up to 60' AGL/1809' MSL.

NUIQSUT, AK

NUIQSUT (AQT) (PAQT)

TAKEOFF MINIMUMS AND (OBSTACLE)
DEPARTURE PROCEDURES

ORIG 10098 (FAA)

NOTE: **Rwy 5**, road with vehicles beginning 165' from DER, left and right of centerline, up to 15' AGL/89' MSL. **Rwy 23**, terrain beginning 211' from DER, 523' left of centerline to 450' right of centerline, up to 74' MSL.

NULATO, AK

NULATO (NUL) (PANU)

TAKEOFF MINIMUMS AND (OBSTACLE)
DEPARTURE PROCEDURES

ORIG 04330 (FAA)

TAKEOFF MINIMUMS: **Rwy 2**, 700-2 ¼ w/min. climb of 356 feet per NM to 1300 or 1000-3 for climb in visual conditions.

DEPARTURE PROCEDURE: **Rwy 2**, climb via heading 024° to 1300 before proceeding on course or climb in visual conditions to cross Nulato Airport at or above 1300 before proceeding on course. **Rwy 20**, climb via heading 204° to 1500 before proceeding on course.

NOTE: **Rwy 2**, tree 3078' from DER 355' left of centerline 100' AGL 655' MSL. Tree 5041' from DER 154' right of centerline 100' AGL 699' MSL. Tree 1.03 NM from DER 122' right of centerline 100' AGL 799' MSL. Tree 1.24 NM from DER 705' left of centerline 100' AGL 899' MSL. Tree 1.44 NM from DER 2385' left of centerline 100' AGL 999' MSL. Tree 2.57 NM from DER 5740' left of centerline 100' AGL 1035' MSL. **Rwy 20**, tree 3.33 NM from DER 1.64 NM right of centerline 100' AGL 957' MSL. Tree 3.10 NM from DER 1.94 NM right of centerline 100' AGL 965' MSL. Tree 1.49 NM from DER 7.39 NM right of centerline 200' AGL 1850' MSL.

PALMER, AK

PALMER MUNI (PAQ) (PAAQ)

TAKEOFF MINIMUMS AND (OBSTACLE)
DEPARTURE PROCEDURES

AMDT 2 08101 (FAA)

TAKEOFF MINIMUMS: **Rwy 9**, NA-obstacles.
DEPARTURE PROCEDURE: **Rwys 16,27,34**, Use PALMER RNAV DEPARTURE.

PERRYVILLE, AK

PERRYVILLE (PEV) (PAPE)

TAKEOFF MINIMUMS AND (OBSTACLE)
DEPARTURE PROCEDURES

AMDT 1 07018 (FAA)

TAKEOFF MINIMUMS: **Rwy2**, NA-obstacles.
DEPARTURE PROCEDURE: **Rwy20**, Use CILAC (RNAV) DEPARTURE.

PETERSBURG, AK

PETERSBURG JAMES A JOHNSON (PSG)
(PAPG)TAKEOFF MINIMUMS AND (OBSTACLE)
DEPARTURE PROCEDURES

AMDT 6 13178 (FAA)

DEPARTURE PROCEDURE: Use PETERSBURG DEPARTURE.

PILOT POINT, AK

PILOT POINT (PNP) (PAPN)

TAKEOFF MINIMUMS AND (OBSTACLE)
DEPARTURE PROCEDURES

ORIG 03359 (FAA)

DEPARTURE PROCEDURE: Use ZILKO RNAV DEPARTURE.

PLATINUM, AK

PLATINUM (PTU) (PAPM)

TAKEOFF MINIMUMS AND (OBSTACLE)
DEPARTURE PROCEDURES

AMDT 1 11013 (FAA)

TAKEOFF MINIMUMS: **Rwy 14**, std. w/min climb of 631' per NM to 2800 or 2400-3 for climb in visual conditions. DEPARTURE PROCEDURE: **Rwy 14**, for climb in visual conditions cross Platinum Airport at or above 2300 before proceeding on course. **Rwy 32**, climb heading 319° to 1500 before proceeding on course.

NOTE: **Rwy 14**, Ships 986' from DER, 746' right of centerline, up to 150' MSL.

POINT HOPE, AK

POINT HOPE (PHO) (PAPO)

TAKEOFF MINIMUMS AND (OBSTACLE)
DEPARTURE PROCEDURES

AMDT 1 13290 (FAA)

NOTE: **Rwy 1**, barge/iceberg 778' from DER, 632' left of centerline, 50' AGL/50' MSL. Lights 16' from DER, 37' left and right of centerline, 3' AGL/20' MSL. **Rwy 19**, barge/iceberg 912' from DER, 237' left of centerline, 50' AGL/50' MSL. Lights 2' from DER, 38' left and right of centerline, 3' AGL/21' MSL.

18 AUG 2016 to 15 SEP 2016

18 AUG 2016 to 15 SEP 2016

16203



TAKEOFF MINIMUMS, (OBSTACLE) DEPARTURE PROCEDURES, AND DIVERSE VECTOR AREA (RADAR VECTORS)

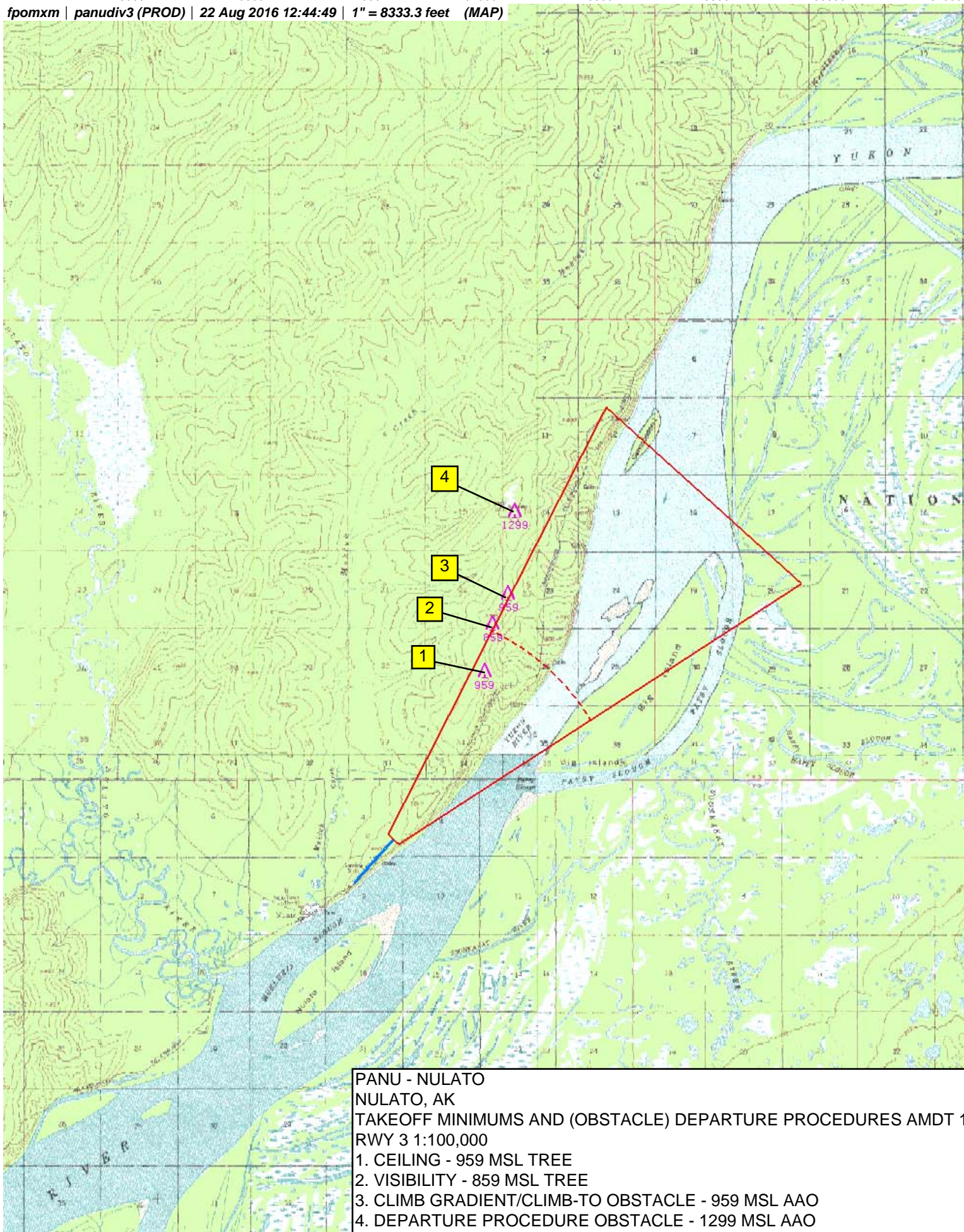
L16



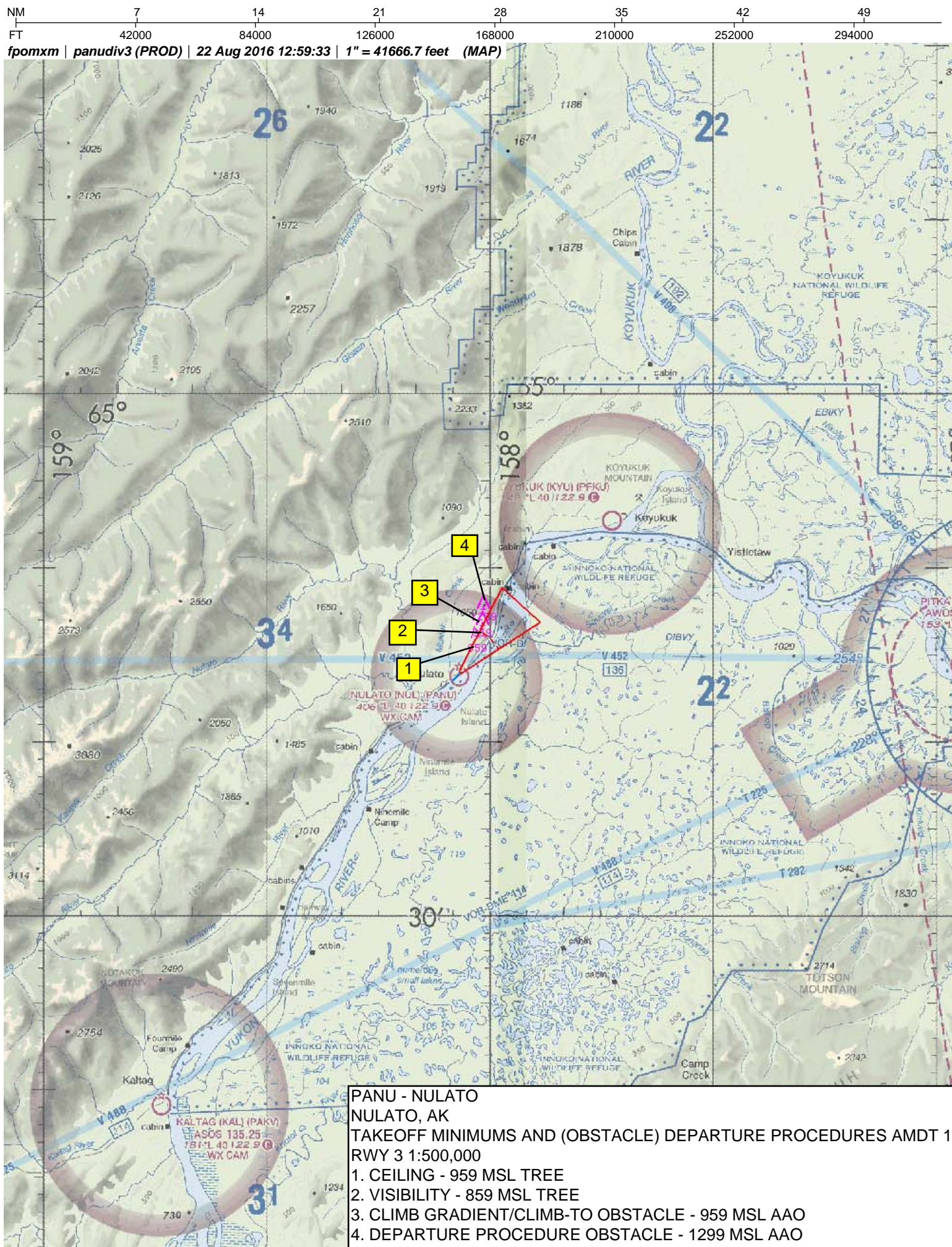
AK

NM 1 2 3 4 5 6 7 8 9 10
FT 8000 16000 24000 32000 40000 48000 56000 64000

fpomxm | panudiv3 (PROD) | 22 Aug 2016 12:44:49 | 1" = 8333.3 feet (MAP)

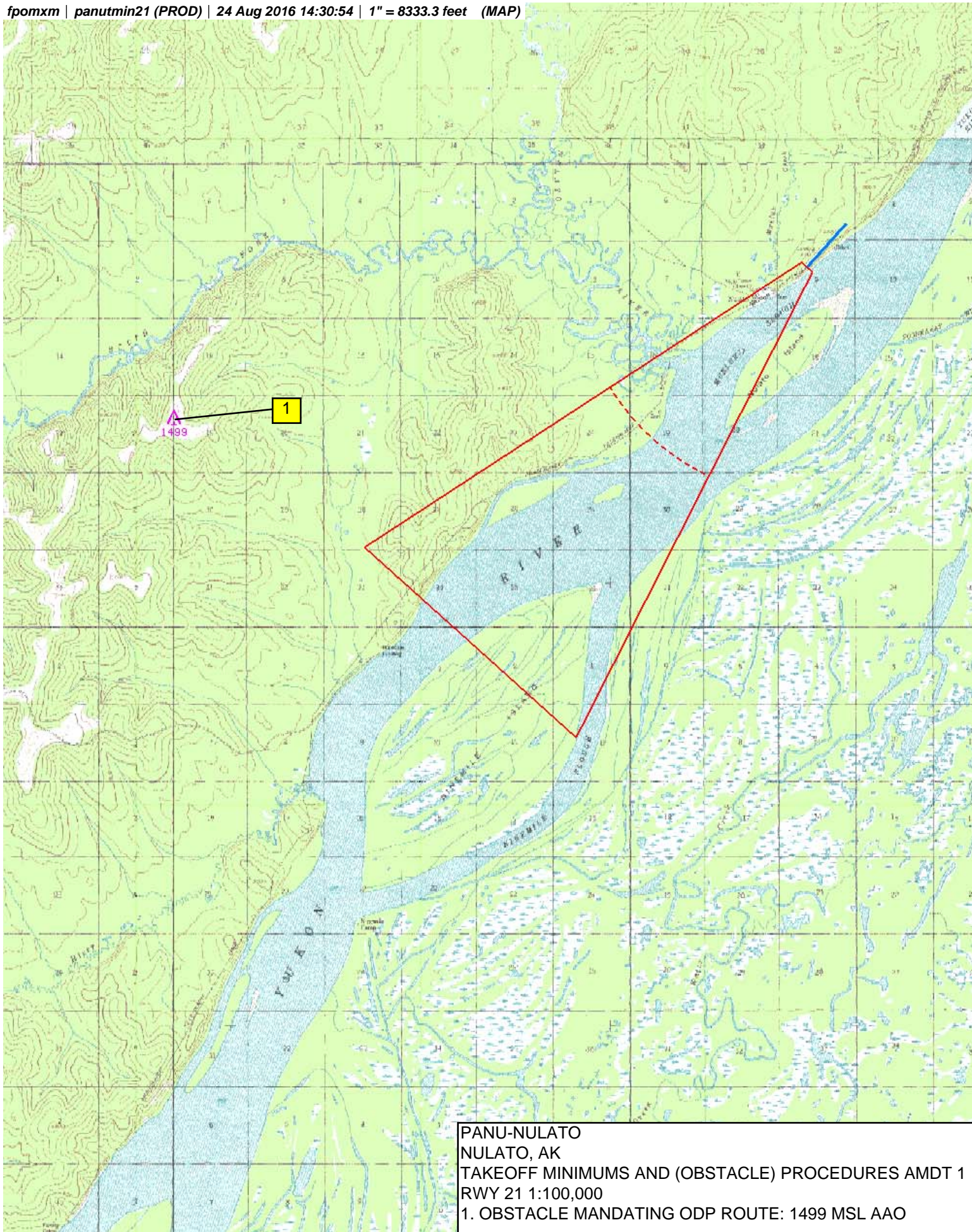


PANU - NULATO
NULATO, AK
TAKEOFF MINIMUMS AND (OBSTACLE) DEPARTURE PROCEDURES AMDT 1
RWY 3 1:100,000
1. CEILING - 959 MSL TREE
2. VISIBILITY - 859 MSL TREE
3. CLIMB GRADIENT/CLIMB-TO OBSTACLE - 959 MSL AAO
4. DEPARTURE PROCEDURE OBSTACLE - 1299 MSL AAO



NM 1 2 3 4 5 6 7 8 9 10
FT 8000 16000 24000 32000 40000 48000 56000 64000

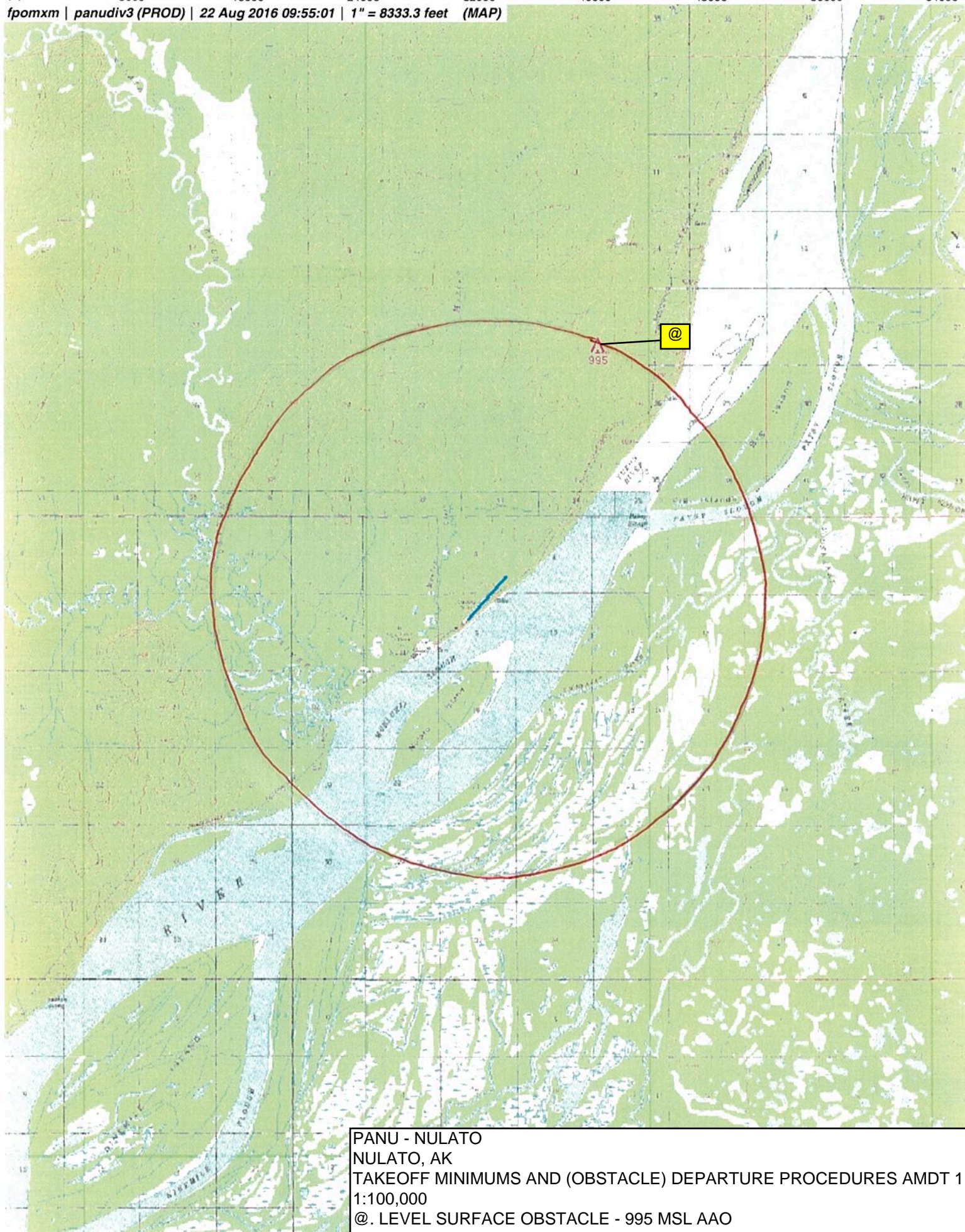
fpomxm | panutmin21 (PROD) | 24 Aug 2016 14:30:54 | 1" = 8333.3 feet (MAP)



PANU-NULATO
NULATO, AK
TAKEOFF MINIMUMS AND (OBSTACLE) PROCEDURES AMDT 1
RWY 21 1:100,000
1. OBSTACLE MANDATING ODP ROUTE: 1499 MSL AAO

NM 1 2 3 4 5 6 7 8 9 10
FT 8000 16000 24000 32000 40000 48000 56000 64000

fpomxm | panudiv3 (PROD) | 22 Aug 2016 09:55:01 | 1" = 8333.3 feet (MAP)



PANU - NULATO
NULATO, AK
TAKEOFF MINIMUMS AND (OBSTACLE) DEPARTURE PROCEDURES AMDT 1
1:100,000
@. LEVEL SURFACE OBSTACLE - 995 MSL AAO

[illegible][illegible]