

Flight Procedure Tracking Form		Action: FLIGHT CHECK	Task Type: IAP	Date Open: 06/14/2016	Task #: 2015030530948601002	Request #: 20150305309486
Procedure: RNAV (GPS) RWY 31 AMDT 2			Airport ID: KIFA	Airport: IOWA FALLS MUNI		Reimbursable #: NO
City: IOWA FALLS	ST: IA	GPS #:	Estimated Chart Date: 02/01/2018		FICO #:	
Fac ID: N/A		Fac. Type:			Specialist: THOMAS KIRKPATRICK	
Procedure Review						
	Rec'd	Rel'd	Full Name		Comments	
Lead:	09/06/2016					
QA:			J ZEDER 08/17/2017 16			
Liaison:						
Procedure Comments:			Remark Type: INFORMATION			
DIGITAL PROCESS ACTIVE DATA USED. CONTACT: DION LANCIA 405-954-1267						

IOWA FALLS, IOWA

AL-6058 (FAA)

FIG

WAAS CH 86732 W31A	APP CRS 314°	Rwy Idg TDZE Apt Elev	4600 1137 1137
--	------------------------	-----------------------------	---

RNAV (GPS) RWY 31 **IOWA FALLS MUNI (IF'A)**



For uncompensated Baro-VNAV systems, LNAV/VNAV NA below -17°C (2°F) or above 54°C (130°F). DME/DME RNP-0.3 NA.

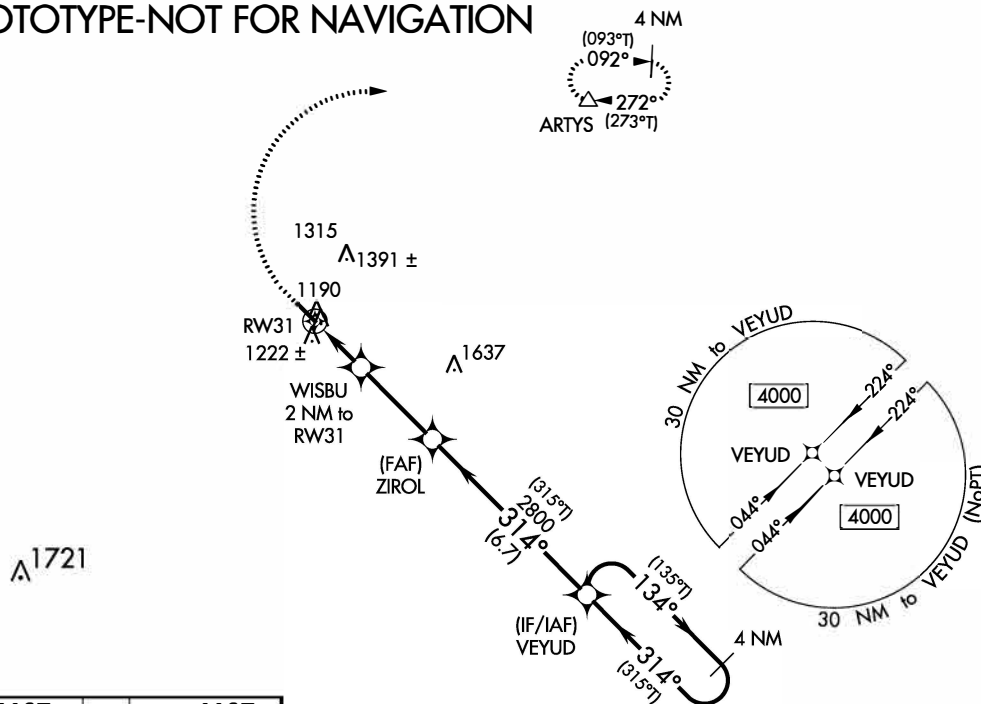
MISSED APPROACH: Climb to 1600 then climbing right turn to 4000 direct ARTYS and hold, continue climb-in-hold to 4000.

AWOS-3
120.425

WATERLOO APP CON ★
118.9

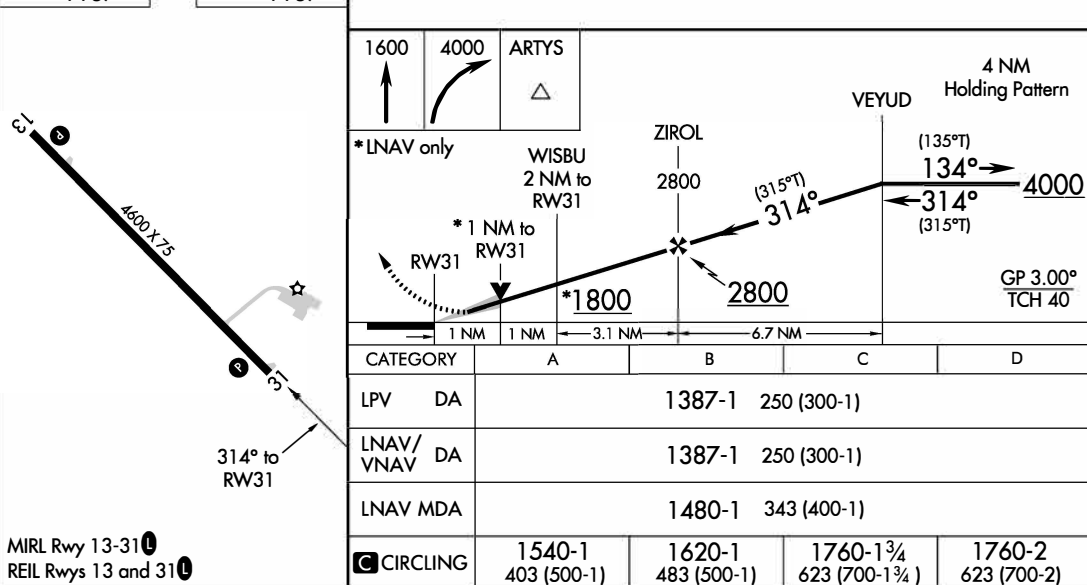
UNICOM
122.8 (CTAF) 0

PROTOTYPE-NOT FOR NAVIGATION



ELEV 1137

TDZE 1137



MIRL Rwy 13-31
REIL Rwy 13 and 31

IOWA FALLS, IOWA

Amdt 2 FIG

42°28'N-93°16'W

RNAV (GPS) RWY 31
IOWA FALLS MUNI (IF'A)

AUTOMATED AL-6058 RNAV (GPS) RWY 31

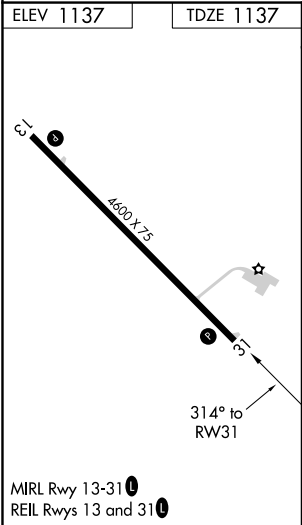
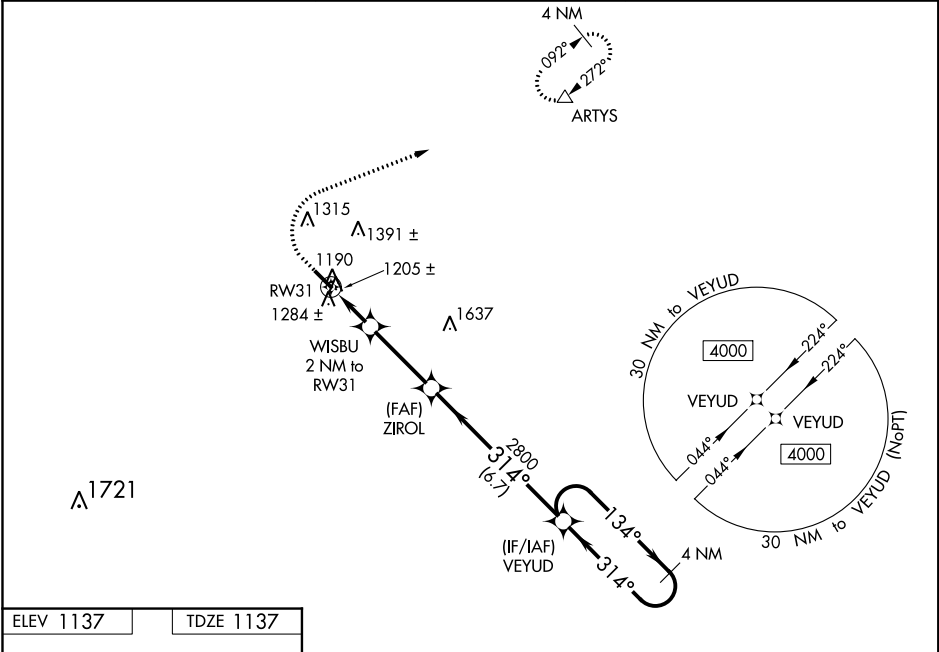
NC-3
01 AUG 2017
COMPILER: HD
REVIEWER:
DBL CHKR:
EFF: FIG

WAAS CH 86732 W31A	APP CRS 314°	Rwy Idg TDZE 1137 Apt Elev 1137	4600
--	------------------------	---	-------------

RNAV (GPS) RWY 31
IOWA FALLS MUNI (IFA)

<p>▼ Baro-VNAV NA when using Webster City altimeter setting. For uncompensated Baro-VNAV systems, LNAV/VNAV NA below -17°C (2°F) or above 54°C (130°F). DME/DME RNP-0.3 NA.</p> <p>▲ VDP NA with Webster City altimeter setting. When local altimeter setting not received, use Webster City altimeter setting and increase all DA 64 feet and all MDA 80 feet, and increase LNAV/VNAV all Cats visibility ¼ mile.</p>	<p>MISSED APPROACH: Climb to 1600 then climbing right turn 4000 direct ARTYS and hold, continue climb-in-hold to 4000.</p>
--	--

AWOS-3 120.425	WATERLOO APP CON ★ 118.9	UNICOM 122.8 (CTAF) 0
--------------------------	------------------------------------	---------------------------------



1600	4000	ARTYS		
↑	↷	△		
*LNAV only				
<p>1600 4000 ARTYS △</p> <p>*LNAV only</p> <p>WISBU 2 NM to RW31</p> <p>ZIROL 2800</p> <p>VEYUD 4 NM Holding Pattern</p> <p>134° 314° 4000</p> <p>*1.1 NM to RW31</p> <p>*1800</p> <p>2800</p> <p>GP 3.00° TCH 40</p> <p>1.1 NM 0.9 NM 3.1 NM 6.7 NM</p>				
CATEGORY	A	B	C	D
LPV DA	1387-1	250 (300-1)	NA	
LNAV/ VNAV	1446-1	309 (400-1)	NA	
LNAV MDA	1540-1	403 (500-1)	NA	
CIRCLING	1620-1	483 (500-1)	NA	

NC-3, 20 JUL 2017 to 17 AUG 2017

NC-3, 20 JUL 2017 to 17 AUG 2017

3. STRAIGHT-IN AREA (NoPT): 1721 MSL TOWER

(IFA)
IOAW FALLS MUNI
IOWA FALLS, IA
RNAV (GPS) RWY 31
AMDT 2
SCALE = 1:650,000

1. STRAIGHT-IN AREA (NoPT):
1658 MSL TOWER

(IFA)
IOAW FALLS MUNI
IOWA FALLS, IA
RNAV (GPS) RWY 31
AMDT 2
SCALE = 1:500,000

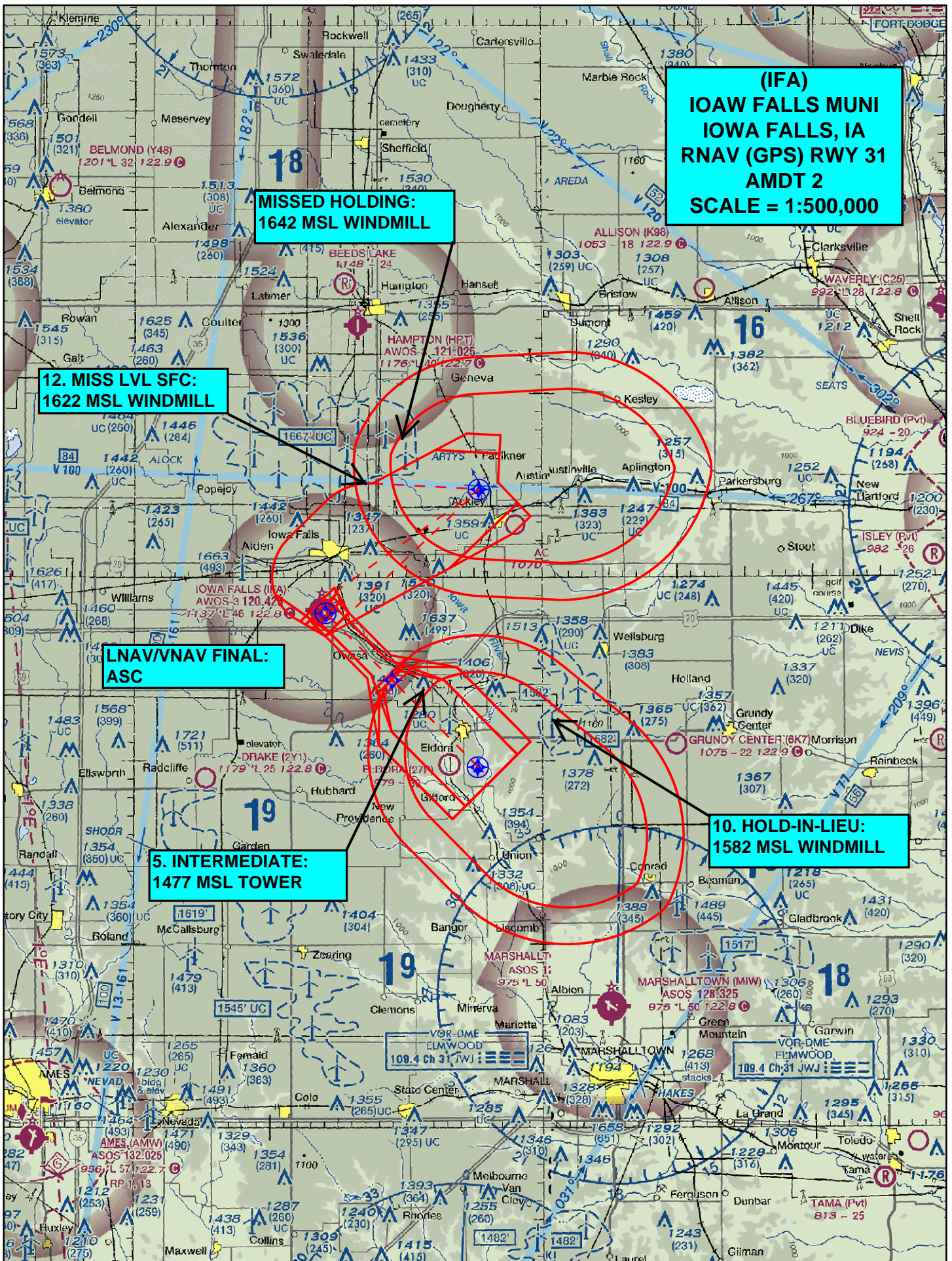
MISSED HOLDING:
1642 MSL WINDMILL

12. MISS LVL SFC:
1622 MSL WINDMILL

LNAV/VNAV FINAL:
ASC

5. INTERMEDIATE:
1477 MSL TOWER

10. HOLD-IN-LIEU:
1582 MSL WINDMILL



**12. MISS LVL SFC:
1622 MSL WINDMILL**

**LNAV/VNAV FINAL:
ASC**

(IFA)
**IOAW FALLS MUNI
IOWA FALLS, IA
RNAV (GPS) RWY 31
AMDT 2
SCALE = 1:100,000**

A topographic map of the Iowa Falls, IA area, overlaid with red lines representing flight paths. A large red circle indicates a 5 NM radius from the airport. Red dashed lines show the final approach course (ASC) for runway 31, which is labeled as "LNAV/VNAV FINAL: ASC". The map includes labels for "Iowa Falls Municipal Airport", "HARDIN", "Beaver Creek", "Owasa", "Eagle City", and "Robertson". A blue star symbol marks the airport location. A black arrow points towards the top right corner. Two cyan boxes contain text: one at the top left stating "12. MISS LVL SFC: 1622 MSL WINDMILL" and another at the bottom left providing details about the approach procedure: "(IFA) IOAW FALLS MUNI IOWA FALLS, IA RNAV (GPS) RWY 31 AMDT 2 SCALE = 1:100,000".

[illegible]

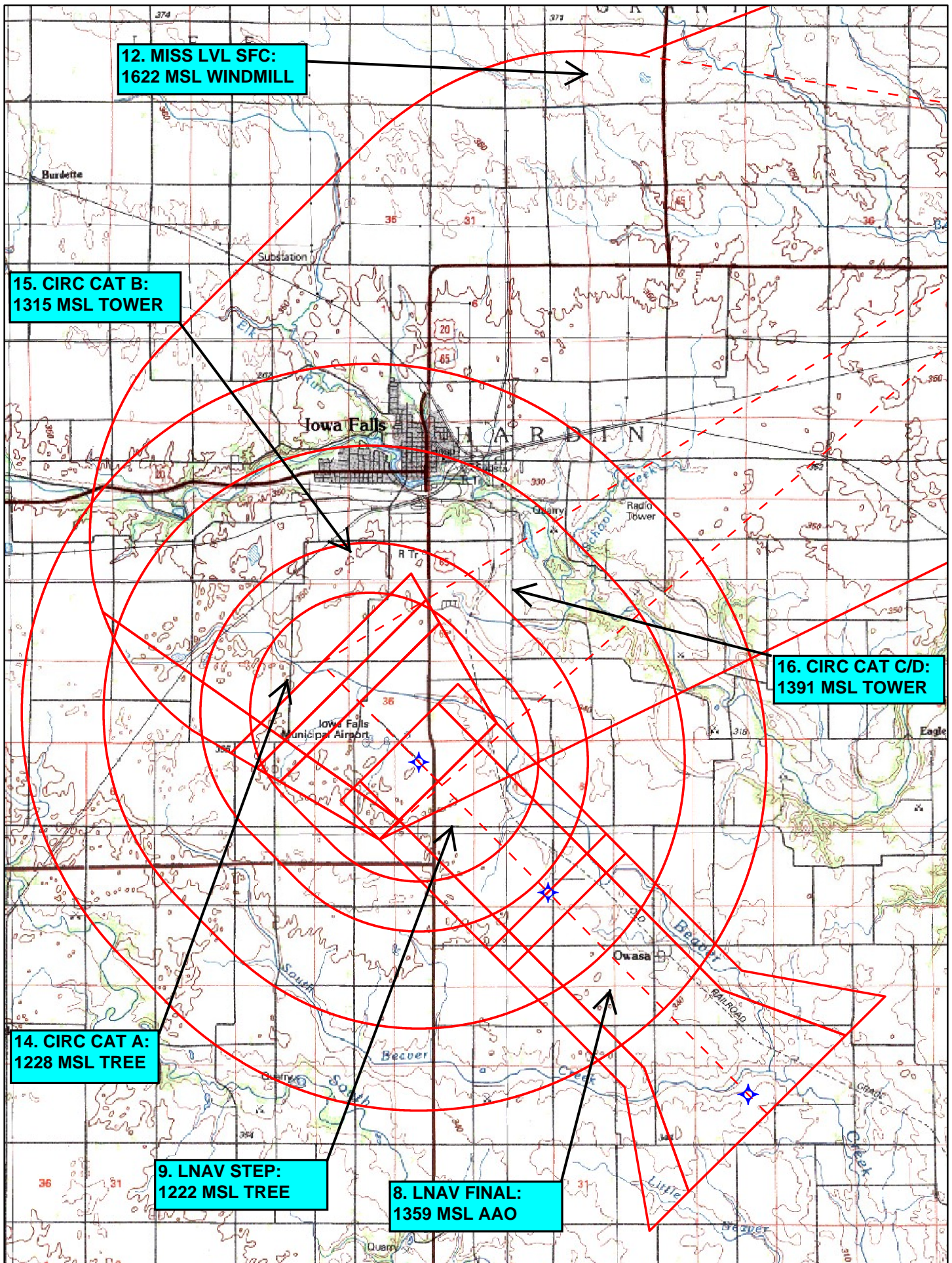
[illegible]

**12. MISS LVL SFC:
1622 MSL WINDMILL**

**7. LPV FINAL: 1205
MSL TREE**

(IFA)
IOAW FALLS MUNI
IOWA FALLS, IA
RNAV (GPS) RWY 31
AMDT 2
SCALE = 1:100,000

A topographic map of the Iowa Falls, IA area at a scale of 1:100,000. The map features contour lines indicating elevation, with major contours every 100 feet. Key locations include Iowa Falls, Eagle City, and Owasa. The map shows several creeks, including Beaver Creek and Little Beaver Creek. A large red circle is drawn around the Iowa Falls area, centered near the intersection of US Highway 65 and State Road 20. A black arrow points from a blue box labeled "12. MISS LVL SFC: 1622 MSL WINDMILL" to a point on the circle's circumference. Another black arrow points from a blue box labeled "7. LPV FINAL: 1205 MSL TREE" to a point on the circle's circumference. A third black arrow points from a blue box labeled "(IFA) IOAW FALLS MUNI IOWA FALLS, IA RNAV (GPS) RWY 31 AMDT 2 SCALE = 1:100,000" to a point on the circle's circumference. The map also shows various landmarks such as a Substation, Quarry, Radio Tower, and Municipal Airport. The map is overlaid with a grid of latitude and longitude lines.



TERMINAL AIRSPACE DATA REQUIREMENTS

CITY: **IOWA FALLS**

STATE: **IA**

AIRPORT NAME: **IOWA FALLS MUNI**

ID: **KIFA**

PROCEDURE: **RNAV (GPS) RWY 31**

AMDT: **1**

DOCKET#: **NOT REQUIRED**
(96-AXX-X/Required/Not Required)

INFORMATION ONLY

ALL DIST TO 1/100 NM; ELEV TO NEAREST FT; COORD TO 1/100 SEC; DEG TO 1/100 DG.

- | | | | |
|---|---------------------------------|--------------------------------|---------------|
| 1. Distance from | <u>THLD</u> | to 1000' point | <u>3.21</u> |
| <small>(Enter THLD, FAF, ARP, FACILITY, as appropriate)</small> | | | |
| 2. Width of | <u>FINAL</u> | segment at 1000' point | <u>1.20</u> |
| <small>(Enter appropriate segment, final, intermediate, etc.)</small> | | | |
| 3. True Course of | <u>FINAL</u> | segment containing 1000' point | <u>315.26</u> |
| 4. High Terrain in | <u>FINAL</u> | segment containing 1000' point | <u>1169</u> |
| 5. Distance from | <u>THLD</u> | to 1500' point | <u>4.90</u> |
| <small>(If 1500' point in PT maneuvering area or holding pattern note in remarks)</small> | | | |
| 6. Width of | <u>FINAL</u> | segment at 1500' point | <u>1.95</u> |
| 7. True Course of | <u>FINAL</u> | segment containing 1500' point | <u>315.26</u> |
| 8. High Terrain in | <u>FINAL</u> | segment containing 1500' point | <u>1169</u> |
| 9. Threshold Coordinates (if straight-in) ... | <u>422800.76N / 0931552.96W</u> | | |
| 10. ARP Coordinates | <u>422816.89N / 0931614.59W</u> | | |
| 11. Runway Approach End and distance furthest from ARP | RWY | <u>13</u> | |
| | Distance | <u>0.43</u> | NM |
| 12. FAF Coordinates | <u>422423.54N / 0931102.12W</u> | | |

REMARKS: Approach/Drawing attached.

VEYUD IF/IAF: 421937.72N/0930440.65W

TAA 30NM RADIUS