

<b>Flight Procedure Tracking Form</b>		<b>Action:</b> AMENDMENT	<b>Task Type:</b> IAP	<b>Date Open:</b> 01/28/2016	<b>Task #:</b> 2015021726907401004	<b>Request #:</b> 20150217269074
<b>Procedure:</b> APPROACH VOR/DME RWY 7 AMDT 2B			<b>Airport ID:</b> KLZU	<b>Airport:</b> GWINNETT COUNTY - BRISCOE FIELD		<b>Reimbursable #:</b> NO
<b>City:</b> LAWRENCEVILLE	<b>ST:</b> GA	<b>GPS #:</b>	<b>Estimated Chart Date:</b> 03/31/2016		<b>FICO #:</b>	
<b>Fac ID:</b> N/A		<b>Fac. Type:</b>		<b>Specialist:</b> STEVE BRUMMETT		
<b>Procedure Review</b>						
	<b>Rec'd</b>	<b>Rel'd</b>	<b>Full Name</b>	<b>Comments</b>		
<b>Lead:</b>	02/17/2015	08/28/2015	MARCELLO SADORRA			
<b>QA:</b>	08/28/2015	1/29/16	<i>[Signature]</i>			
<b>Liaison:</b>						
<b>Procedure Comments:</b>			ENROUTE NON	<b>Remark Type:</b> INFORMATION		
P-NOTAM CONTACT ADOLFO URRUTIA PHONE 405-954-2079						

[Print](#)

Project Name: LZU OBSTACLES REMOVED PER APRT MGR AND FPT/LEAD COORDINATION

Project Reason: ALL 20:1 OBSTACLES REMOVED FROM RWY 7 PER AIRPORT MANAGER AND FPT/LEAD COORDINATION.

Last Updated By: Steve Brummett

Last Updated At: 2016-01-29 19:43:21.415854

Status: Verified 6/7929

!FDC X/XXXX LZU IAP GWINNETT COUNTY - BRISCOE FIELD, LAWRENCEVILLE, GA. VOR/DME RWY 7, AMDT 2A... CHANGE HELICOPTER VISIBILITY REDUCTION NOTE TO READ: HELICOPTER VISIBILITY REDUCTION BELOW 3/4 SM NOT AUTHORIZED. DELETE NOTE: WHEN VGSI INOP, STRAIGHT-IN/CIRCLING RWY 7 PROCEDURE NA AT NIGHT. THIS IS VOR/DME RWY 7, AMDT 2B. 1601291943-PERM

*SB*  
1/29/16  
QUALITY  
1  
CHECKED

LAWRENCEVILLE, GEORGIA

AL-5385 (FAA)

13066

VOR/DME PDK <b>116.6</b> Chan <b>113</b>	APP CRS <b>075°</b>	Rwy Idg THRE <b>1061</b> Apt Elev <b>1062</b>
--	------------------------	---

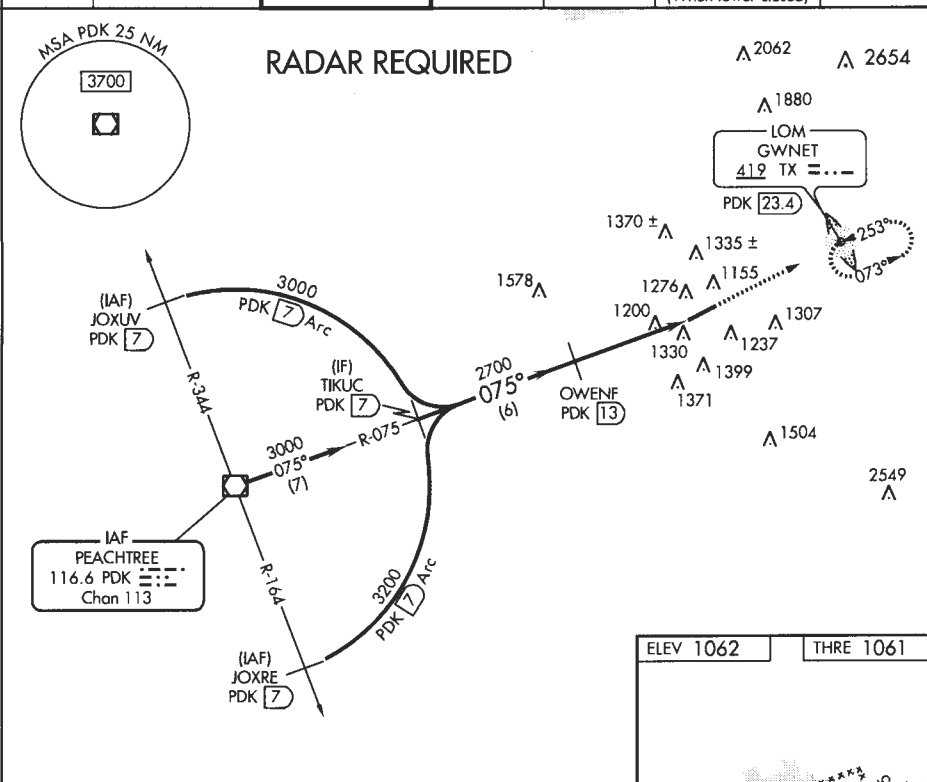
LAWRENCEVILLE/GWINNETT COUNTY-BRISCOE FIELD (LZU)

**VOR/DME RWY 7**

▼ When VGSI inop, Straight-in/Circling Rwy 7 procedure NA at night.  
 ▲ Helicopter visibility reduction below 1SM NA. When local altimeter setting not received, use Winder altimeter setting and increase all MDA 60 feet.  
 Increase S-7 and Circling Cat C visibility ½ mile, and Circling Cat D ¼ mile.

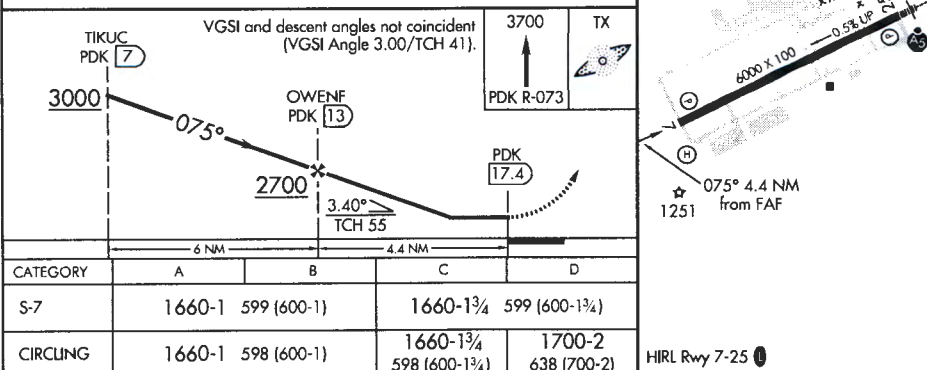
MISSED APPROACH: Climb to 3700 on PDK  
 VOR/DME R-073 to GWN/ET/PDK 23.4 DME  
 and hold, continue climb-in-hold to 3700.

ATIS <b>132.275</b>	ATLANTA APP CON <b>126.975 239.275</b>	GWINNETT TOWER ★ <b>124.1</b> (CTAF) 0	GND CON <b>121.8</b>	CLNC DEL <b>121.8</b>	ATLANTA CLNC DEL <b>134.0</b> (When tower closed)	UNICOM <b>123.05</b>
------------------------	---	---	-------------------------	--------------------------	---	-------------------------



SE-4, 04 FEB 2016 to 03 MAR 2016

SE-4, 04 FEB 2016 to 03 MAR 2016



LAWRENCEVILLE, GEORGIA  
 Amdt 2A 07MAR13

LAWRENCEVILLE/GWINNETT COUNTY-BRISCOE FIELD (LZU)  
 33°59'N-83°58'W

**VOR/DME RWY 7**