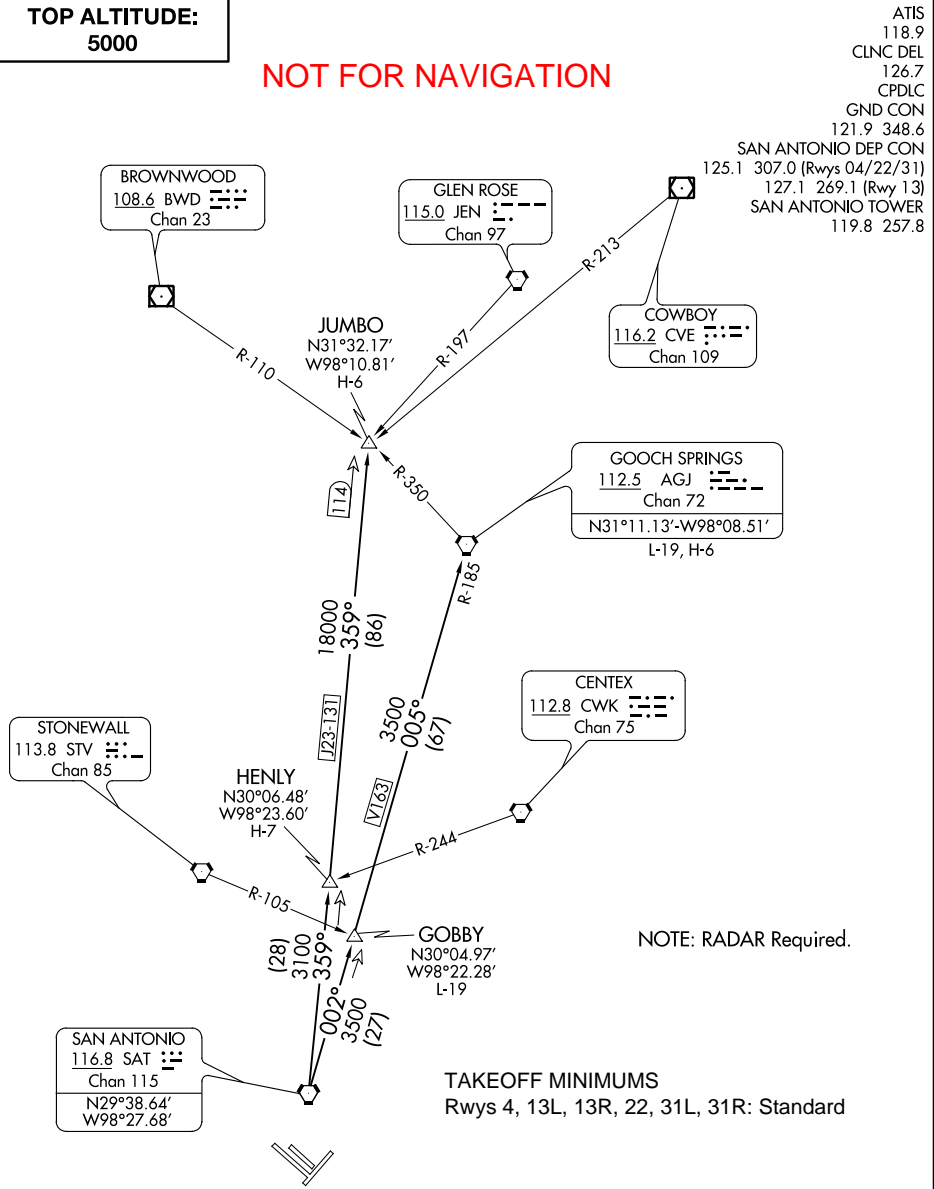


(ALAMO2.ALAMO)
ALAMO TWO DEPARTURE

SAN ANTONIO INTL (SAT)
SAN ANTONIO, TEXAS

TOP ALTITUDE:
5000

NOT FOR NAVIGATION



(NARRATIVE ON FOLLOWING PAGE)
(NOTES CONTINUED ON FOLLOWING PAGE)

NOTE: Chart not to scale.



DEPARTURE ROUTE DESCRIPTION

TAKE-OFF RUNWAYS 4, 13L, 13R, 22, 31L, 31R: Climb on assigned heading for Radar vectors to SAT VORTAC. Maintain 5000, thence. . .

. . . on transition/route. Expect filed altitude 10 minutes after departure.

- GOBBY TRANSITION (ALAMO2.GOBBY): From over SAT VORTAC on SAT R-002 to GOBBY/SAT 27 DME.
- GOOCH SPRINGS TRANSITION (ALAMO2.AGJ): From over SAT VORTAC on SAT R-002 to GOBBY/SAT 27 DME, then on SAT R-002 and AGJ R-185 to AGJ VORTAC.
- HENLY TRANSITION (ALAMO2.HENLY): From over SAT VORTAC on SAT R-359 to HENLY/SAT 28 DME.
- JUMBO TRANSITION (ALAMO2.JUMBO): From over SAT VORTAC on SAT R-359 to JUMBO/SAT 114 DME.

TAKE-OFF OBSTACLES:

- Rwy 13R: Antenna on RTR tower, 1034’ from DER, 723’ right of centerline, 42’ AGL/820’ MSL.
Building 3801’ from DER, 1488’ right of centerline, 117’ AGL/881’ MSL.
- Rwy 22: Antenna on hangar and flagpole 1198’ from DER, 700’ right of centerline, 39’ AGL/825’ MSL.
Poles beginning 2209’ from DER, 1041’ right of centerline, up to 23’ AGL/869’ MSL.
Sign 2713’ from DER, 1034’ right of centerline, 71’ AGL/857’ MSL.
- Rwy31L: Pole 1931’ from DER, 911’ left of centerline, 42’ AGL/867’ MSL.
Poles beginning 2356’ from DER, 913’ left of centerline, up to 42’ AGL/892’ MSL.
Sign 2435’ from DER, 1032’ right of centerline, 42’ AGL/873’ MSL.
Tower 2766’ from DER, 834’ left of centerline, 54’ AGL/891’ MSL
- Rwy 31R: Rod on obstruction light GS 1261’ from DER, 591’ left of centerline, 57’ AGL/854’ MSL.

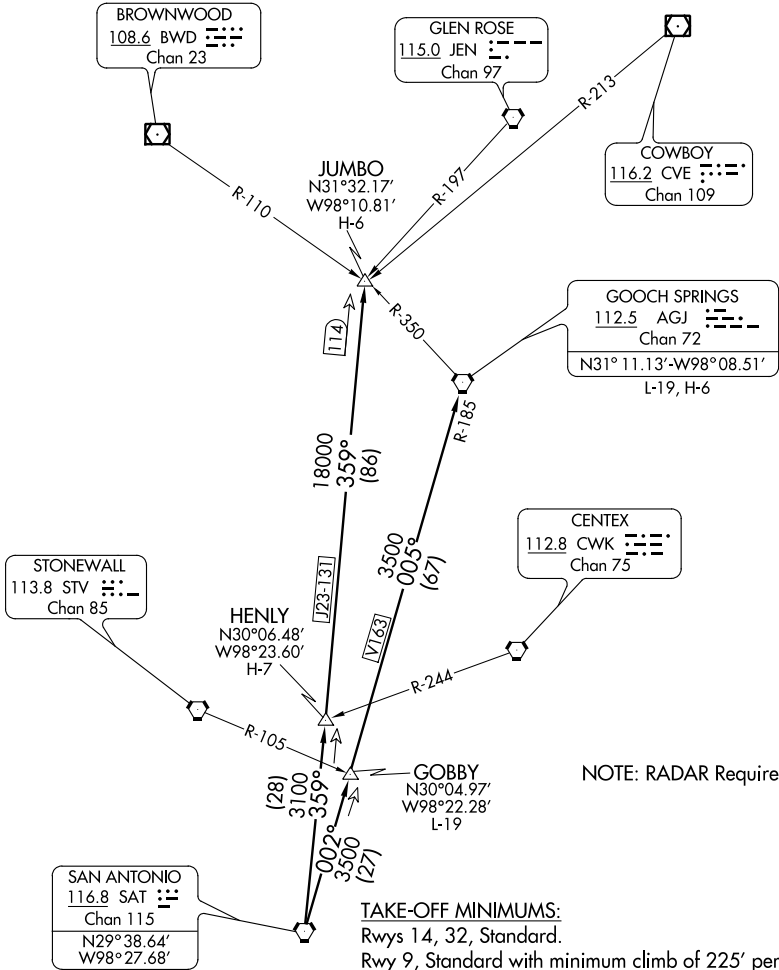
NOT FOR NAVIGATION

(ALAMO2.ALAMO)
ALAMO TWO DEPARTURE (RNAV)

STINSON MUNI (SSF)
SAN ANTONIO, TEXAS

ATIS
128.8
CLNC DEL
121.7
GND CON
121.7 379.9
STINSON TOWER ★
118.2 379.9

NOT FOR NAVIGATION



(NARRATIVE ON FOLLOWING PAGE)

NOTE: Chart not to scale



DEPARTURE ROUTE DESCRIPTION
NOT FOR NAVIGATION

TAKE-OFF RUNWAYS 9, 14, 27, 32: Climb on assigned heading and altitude for Radar vectors to SAT VORTAC, thence. . .

. . . on transition/route. Expect filed altitude 10 minutes after departure.

GOBBY TRANSITION (ALAMO2.GOBBY): From over SAT VORTAC on SAT R-002 to GOBBY/SAT 27 DME.

GOOCH SPRINGS TRANSITION (ALAMO2.AGJ): From over SAT VORTAC on SAT R-002 to GOBBY/SAT 27 DME, then on SAT R-002 and AGJ R-185 to AGJ VORTAC.

HENLY TRANSITION (ALAMO2.HENLY): From over SAT VORTAC on SAT R-359 to HENLY/SAT 28 DME.

JUMBO TRANSITION (ALAMO2.JUMBO): From over SAT VORTAC on SAT R-359 to JUMBO/SAT 114 DME.

TAKE-OFF OBSTACLES:

- Rwy 9: Vehicle on road, 285' from DER, 380' left of centerline, 15' AGL/584' MSL.
Trees beginning 1653' from DER, 435' right of centerline, up to 70' AGL/629' MSL.
- Rwy 14: Vehicle on road 114' from DER, on centerline extending 373' left of centerline, up to 15' AGL/564' MSL.
Trees beginning 72' from DER, 79' right of centerline, up to 70' AGL/607' MSL.
Trees beginning 232' from DER, 54' left of centerline, up to 70' AGL/618' MSL.
Transmission line tower 4205' from DER, 133' right of centerline, 119' AGL/663' MSL.
- Rwy 27: Fence 41' from DER, 30' right of centerline, 8' AGL/584' MSL. Vehicle on road, 108' from DER, 202' right of centerline, 15' AGL/584' MSL. Vehicle on road 123' from DER, 113' right of centerline, 15' AGL/596 MSL. Trees and poles beginning 229' from DER, 117' right of centerline, up to 70' AGL/645' MSL.
Trees and poles beginning 599' from DER, 8' left of centerline, up to 70' AGL/634' MSL. Building 1422' from DER, 432' right of centerline, 40' AGL/527' MSL. Building 2133' from DER, 36' left of centerline, 55' AGL/635' MSL. Tanks beginning 1.3 NM from DER, 1338' right of centerline, 179' AGL/799' MSL.
- Rwy 32: Fence 17' from DER, 80' left of centerline, 8' AGL/578' MSL.
Vehicle on road 54' from DER, 199' left of centerline, 15' AGL/586' MSL.
Trees beginning 164' from DER, 125' right of centerline, up to 70' AGL/639' MSL.
Trees and poles beginning 43' from DER, 41' left of centerline, up to 75' AGL/668' MSL.

ESV Details

Originating Office :		Airspace Docket Number :		Request Type : Establish		
Facility Data						
Chart Name : LAMPASAS		City : LAMPASAS		Ident : AGJ		State : TX
Type/Class : H-VOR		Frequency : M112.5		Reference No.: 09045822		
Expanded Service Volume Data: (Requesting Officer)						
ESV ID	Radial 1	Radial 2	Distance	Minimum Altitude	Maximum Altitude	
FAA 767087-013	185	0	47	35	157	
Requirement: GRANDFATHERED: V163 COP						
Signature: BARNETT STEVEN		Routing Symbol: AJW323				Date: 04/17/2009
Expanded Service Volume Data: (FMO)						
ESV ID	Radial 1	Radial 2	Distance	Minimum Altitude	Maximum Altitude	Action Type
FAA 767087-013	185	0	47	35	157	APPROVE
Requirement/Remarks: GRANDFATHERED: V163 COP Approved. Pend. Flight Chk/Inspect @ the req. dist. and MIN ALT.						
Signature: CHRISTEIN THOMAS		Routing Symbol:			Date: 04/20/2009	
Expanded Service Volume Data: (Super FMO)						
ESV ID	Radial 1	Radial 2	Distance	Minimum Altitude	Maximum Altitude	Action Type
FAA 767087-013	185	0	47	35	157	APPROVE
Requirement/Remarks: GRANDFATHERED: V163 COP Approved. Pend. Flight Chk/Inspect @ the req. dist. and MIN ALT.						
Signature: CHRISTEIN THOMAS		Routing Symbol:			Date: 04/20/2009	
Expanded Service Volume Data: (FIFO)						
ESV ID	Radial 1	Radial 2	Distance	Minimum Altitude	Maximum Altitude	Action Type
FAA 767087-013	185	0				
Requirement/Remarks:						
Signature:		Routing Symbol:			Date:	

ESV Details

Originating Office :		Airspace Docket Number :		Request Type : Establish		
Facility Data						
Chart Name : LAMPASAS		City : LAMPASAS		Ident : AGJ		State : TX
Type/Class : TACR		Frequency : M1159		Reference No.: 09045823		
Expanded Service Volume Data: (Requesting Officer)						
ESV ID	Radial 1	Radial 2	Distance	Minimum Altitude	Maximum Altitude	
FAA 767088-013	185	0	47	35	157	
Requirement: GRANDFATHERED: V163 COP						
Signature: BARNETT STEVEN		Routing Symbol: AJW323				Date: 04/17/2009
Expanded Service Volume Data: (FMO)						
ESV ID	Radial 1	Radial 2	Distance	Minimum Altitude	Maximum Altitude	Action Type
FAA 767088-013	185	0	47	35	157	APPROVE
Requirement/Remarks: GRANDFATHERED: V163 COP Approved. Pend. Flight Chk/Inspect @ the req. dist. and MIN ALT.						
Signature: CHRISTEIN THOMAS		Routing Symbol:			Date: 04/20/2009	
Expanded Service Volume Data: (Super FMO)						
ESV ID	Radial 1	Radial 2	Distance	Minimum Altitude	Maximum Altitude	Action Type
FAA 767088-013	185	0	47	35	157	APPROVE
Requirement/Remarks: GRANDFATHERED: V163 COP Approved. Pend. Flight Chk/Inspect @ the req. dist. and MIN ALT.						
Signature: CHRISTEIN THOMAS		Routing Symbol:			Date: 04/20/2009	
Expanded Service Volume Data: (FIFO)						
ESV ID	Radial 1	Radial 2	Distance	Minimum Altitude	Maximum Altitude	Action Type
FAA 767088-013	185	0				
Requirement/Remarks:						
Signature:		Routing Symbol:			Date:	