



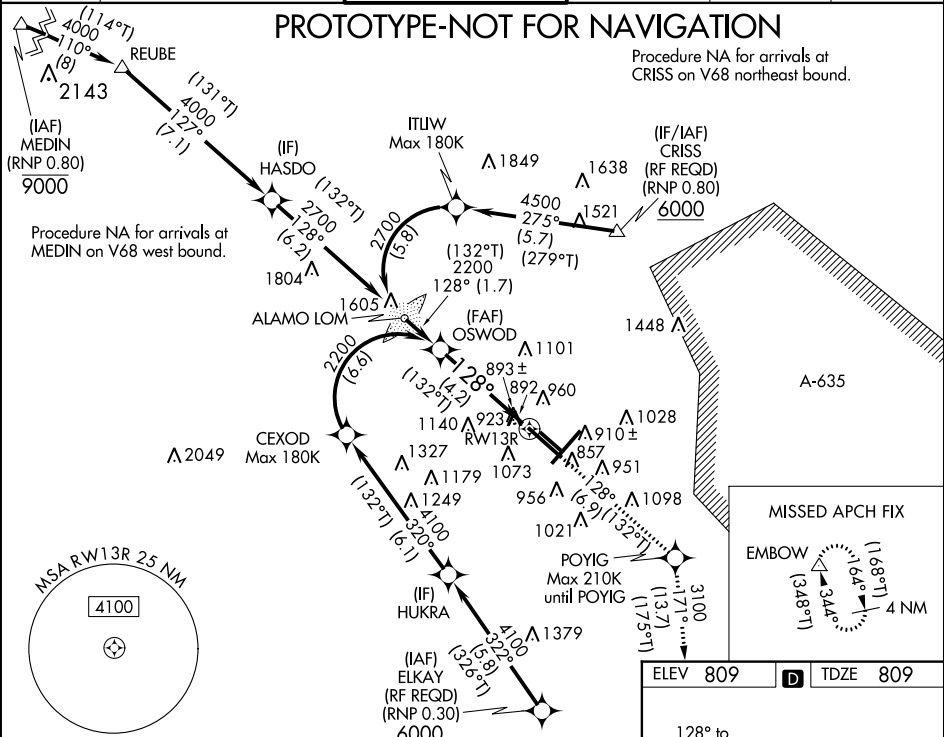
<b>Flight Procedure Tracking Form</b>		<b>Action:</b> FLIGHT CHECK	<b>Task Type:</b> IAP	<b>Date Open:</b> 02/17/2015	<b>Task #:</b> 2015021029638002003	<b>Request #:</b> 20150210296380
<b>Procedure:</b> RNAV (RNP) Z RWY 13R AMDT 0C			<b>Airport ID:</b> KSAT	<b>Airport:</b> SAN ANTONIO INTL		<b>Reimbursable #:</b> NO
<b>City:</b> SAN ANTONIO	<b>ST:</b> TX	<b>GPS #:</b>	<b>Estimated Chart Date:</b> 03/02/2017		<b>FICO #:</b>	
<b>Fac ID:</b> N/A		<b>Fac. Type:</b>		<b>Specialist:</b> STEVE NELSON		
<b>Procedure Review</b>						
	<b>Rec'd</b>	<b>Rel'd</b>	<b>Full Name</b>	<b>Comments</b>		
<b>Lead:</b>	06/27/2016					
<b>QA:</b>						
<b>Liaison:</b>						
<b>Procedure Comments:</b>			ENROUTE-NON	<b>Remark Type:</b> INFORMATION		
ASSIGNED MAG VAR, KSAT: OLD 8E-NEW 4E.  CONTACT: PETER GETZ, AJV-542 SUBTEAM MANAGER, 405.954.4919. <div style="text-align: right;">  </div>						

APP CRS	Rwy Idg	8502
128°	TDZE	809
	Apt Elev	809

RNAV (RNP) Z RWY 13R  
SAN ANTONIO INTL (SAT)

GPS required. For uncompensated Baro-VNAV systems, procedure NA below -4°C (25°F) or above 54°C (130°F).	ALSIF-2 	MISSED APPROACH: Climb to 3100 on track 128° to POYIG and right turn on track 171° to EMBOW and hold.
--	-------------	---

ATIS 118.9	SAN ANTONIO APP CON 125.1 307.0	SAN ANTONIO TOWER 119.8 257.8	GND CON 121.9 348.6	CLNC DEL 126.7	CPDLC
---------------	------------------------------------	----------------------------------	------------------------	-------------------	-------



VGSI and RNAV glidepath not coincident (VGSI Angle 3.00/TCH 75).

OSWOD 2200

GP 3.00°  
TCH 58

2200 (132°T)  
128°

RW13R

4.2 NM

See planview for multiple IF locations.


CATEGORY	A	B	C	D
RNP 0.15 DA		1150/30	341 (400-5/8)	
RNP 0.30 DA		1303/60	494 (500-1 1/4)	

**AUTHORIZATION REQUIRED**

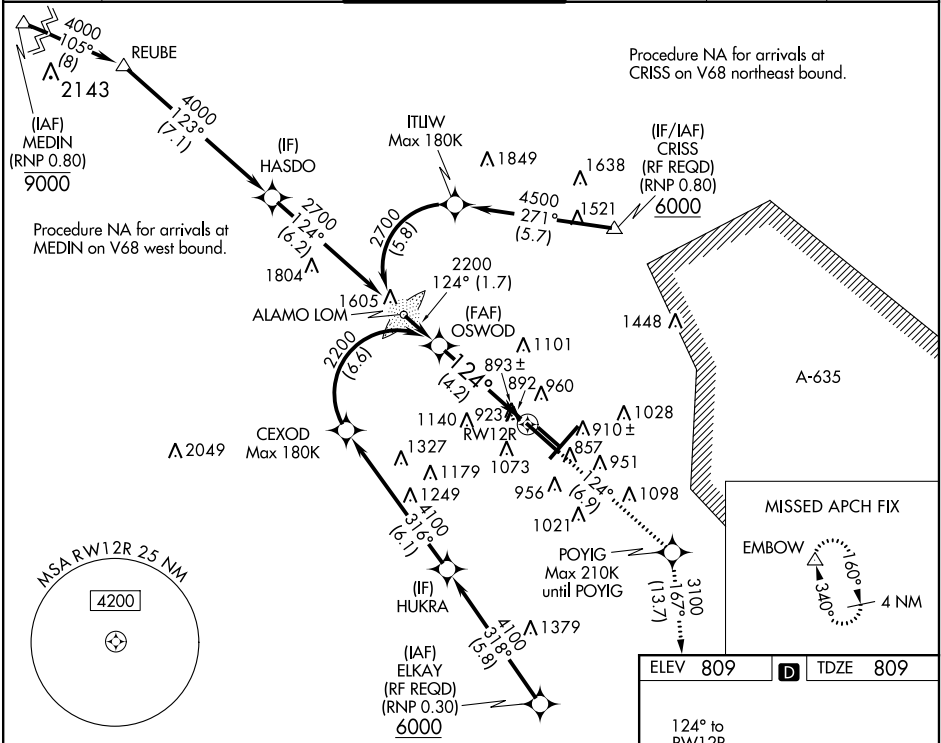
TDZ/CL Rwy 13R  
REIL Rwy 12L, 22 and 30R  
MIRL Rwy 12L-30R  
HIRL Rwy 4-22 and 13R-30L

APP CRS	Rwy Idg	<b>8502</b>
<b>124°</b>	TDZE	<b>809</b>
	Apt Elev	<b>809</b>

RNAV (RNP) Z RWY 12R  
SAN ANTONIO INTL (SAT)

<p><b>▼ GPS required.</b> For uncompensated Baro-VNAV systems, procedure NA below -4°C (24°F) or above 46°C (116°F). For inop ALSF, increase RNP 0.15 all Cats visibility to RVR 5000 and RNP 0.30 all Cats visibility to 1%.</p>	<p><b>ALSF-2</b></p> 	<p><b>MISSED APPROACH:</b> Climb to 3100 on track 124° to POYIG and right turn on track 167° to EMBOW and hold.</p>
---	--	---

ATIS <b>118.9</b>	SAN ANTONIO APP CON <b>125.1 307.0</b>	SAN ANTONIO TOWER <b>119.8 257.8</b>	GND CON <b>121.9 348.6</b>	CLNC DEL <b>126.7</b>	CPDLC
----------------------	---	---	-------------------------------	--------------------------	-------



VGSJ and RNAV glidepath not coincident  
(VGSJ Angle 3.00/TCH 75).

OSWOD  
2200

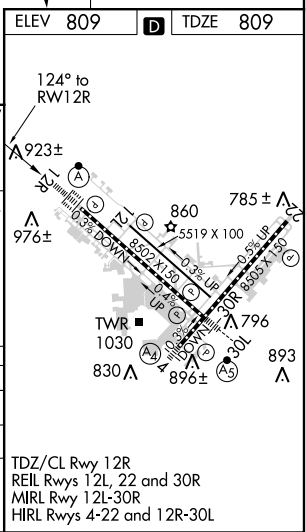
3100 ↑ tr 124°	POYIG ✦	EMBOW ↗ tr 167°	△
----------------------	------------	-----------------------	---

See planview for multiple IF locations.



CATEGORY	A	B	C	D
RNP 0.15 DA		1150/40	341 (400-¾)	
RNP 0.30 DA		1303/60	494 (500-1¼)	

AUTHORIZATION REQUIRED



**SC-3, 15 SEP 2016 to 13 OCT 2016**



# Federal Aviation Administration

## Initial Development Notification for AIRNAV Pending Records

To: Janet Myers, National Flight Data Center, Sub Team B, AJV-5332

From: Jose Alfonso, Manager IFP Coordination Team, AJV-531

Subject: **ACTION:** Request for Pending Records **KSAT\_SAT\_\_SAN ANTONIO INTL, SAN ANTONIO, TX US**

The Magnetic Variation (MV) data for the airport(s) and/or facility(s) listed will be revised effective concurrent with the publication of the procedure(s) listed below. Estimated Chart Date:

Current/Assigned MV

New MV

ECD	Airport ID		Procedure Name	AMDT #	Task Report Type Selections
3/2/2017	KSAT	SAT	ILS OR LOC RWY 12 R AMDT 14C	/A	ABBREV AMEND, FPT-INITIATED, MAGVA
3/2/2017	KSAT	SAT	ILS OR LOC RWY 30 L AMDT 10C	/A	ABBREV AMEND, FPT-INITIATED, MAGVA
3/2/2017	KSAT	SAT	ILS/DME RWY 4 AMDT 22B	/A	ABBREV AMEND, FPT-INITIATED, MAGVA
3/2/2017	KSAT	SAT	RNAV (GPS) Y RWY 12 R AMDT 1B	/A	ABBREV AMEND, FPT-INITIATED, MAGVA
3/2/2017	KSAT	SAT	RNAV (GPS) Y RWY 22 AMDT 2B	/A	ABBREV AMEND, FPT-INITIATED, MAGVA
3/2/2017	KSAT	SAT	RNAV (GPS) Y RWY 30 L AMDT 1B	/A	ABBREV AMEND, FPT-INITIATED
3/2/2017	KSAT	SAT	RNAV (GPS) Y RWY 4 AMDT 3B	/A	ABBREV AMEND, FPT-INITIATED, MAGVA
3/2/2017	KSAT	SAT	RNAV (RNP) Z RWY 12 R ORIG-C	/A	ABBREV AMEND, FPT-INITIATED, MAGVA
3/2/2017	KSAT	SAT	RNAV (RNP) Z RWY 22 AMDT 1B	/A	ABBREV AMEND, FPT-INITIATED, MAGVA
3/2/2017	KSAT	SAT	RNAV (RNP) Z RWY 30 L ORIG-B	/A	ABBREV AMEND, FPT-INITIATED, MAGVA
3/2/2017	KSAT	SAT	RNAV (RNP) Z RWY 4 ORIG-C	/A	ABBREV AMEND, FPT-INITIATED, MAGVA
3/2/2017	KSAT	SAT	SAN ANTONIO TX KSAT AMDT 1A	/A	ENROUTE-NON, FPT-INITIATED, MAGVAR
3/2/2017	KSAT	SAT	SID ALAMO TWO SAN ANTONIO TX SAT	/A	ENROUTE, FPT-INITIATED, MAGVAR
3/2/2017	KSAT	SAT	SID ALISS (RNAV) FIVE SAN ANTONIO TX KSAT	/A	ENROUTE, FPT-INITIATED, MAGVAR, RNA
3/2/2017	KSAT	SAT	SID BOWIE SEVEN SAN ANTONIO TX SAT	/A	ENROUTE, FPT-INITIATED, MAGVAR
3/2/2017	KSAT	SAT	SID LEJON FOUR SAN ANTONIO TX SAT	/A	FPT-INITIATED, MAGVAR
3/2/2017	KSAT	SAT	SID LEJON FOUR SAN ANTONIO TX SAT	/A	FPT-INITIATED, MAGVAR
3/2/2017	KSAT	SAT	SID MILET (RNAV) FOUR SAN ANTONIO TX KSAT	/A	FPT-INITIATED, MAGVAR
3/2/2017	KSAT	SAT	SID MILET (RNAV) FOUR SAN ANTONIO TX KSAT	/A	FPT-INITIATED, MAGVAR
3/2/2017	KSAT	SAT	SID SETZR (RNAV) TWO SAN ANTONIO TX KSAT	/A	FPT-INITIATED
3/2/2017	KSAT	SAT	SID SETZR (RNAV) TWO SAN ANTONIO TX KSAT	/A	FPT-INITIATED
3/2/2017	KSAT	SAT	SID THREE RIVERS (RNAV) FOUR SAN ANTONIO TX KSAT	/A	FPT-INITIATED, MAGVAR, RNAV SID
3/2/2017	KSAT	SAT	SID THREE RIVERS (RNAV) FOUR SAN ANTONIO TX KSAT	/A	FPT-INITIATED, MAGVAR, RNAV SID
3/2/2017	KSAT	SAT	STAR BRAUN (RNAV) TWO SAN ANTONIO TX KSAT	/A	ABBREV AMEND, FPT-INITIATED, MAGVA
3/2/2017	KSAT	SAT	STAR CENTERPOINT TWO SAN ANTONIO TX KSAT	/A	ABBREV AMEND, FPT-INITIATED, MAGVA
3/2/2017	KSAT	SAT	STAR MARCS ONE SAN ANTONIO TX KSAT	/A	ABBREV AMEND, FPT-INITIATED, MAGVA
10/12/2017	KSAT	SAT	RNAV (RNP) X RWY 22 ORIG	/A	FPT-INITIATED
10/12/2017	KSAT	SAT	RNAV (RNP) Z RWY 12 R AMDT 1	/A	FPT-INITIATED, RNP
10/12/2017	KSAT	SAT	RNAV (RNP) Z RWY 22 AMDT 2	/A	FPT-INITIATED, RNP
10/12/2017	KSAT	SAT	RNAV (RNP) Z RWY 30 L AMDT 1	/A	FPT-INITIATED, RNP
10/12/2017	KSAT	SAT	RNAV (RNP) Z RWY 4 AMDT 1	/A	FPT-INITIATED, RNP
10/12/2017	KSAT	SAT	SID ALISS (RNAV) SIX SAN ANTONIO TX KSAT	/A	FPT-INITIATED, RNAV SID
10/12/2017	KSAT	SAT	SID MILET (RNAV) FOUR SAN ANTONIO TX KSAT	/A	RNAV SID
10/12/2017	KSAT	SAT	SID SETZR (RNAV) THREE SAN ANTONIO TX KSAT	/A	RNAV SID
10/12/2017	KSAT	SAT	SID SLENA (RNAV) ONE SAN ANTONIO TX KSAT	/A	FPT-INITIATED, RNAV SID
10/12/2017	KSAT	SAT	SID SNIDR (RNAV) ONE SAN ANTONIO TX KSAT	/A	FPT-INITIATED, RNAV SID
10/12/2017	KSAT	SAT	SID THREE RIVERS (RNAV) FIVE SAN ANTONIO TX KSAT	/A	RNAV SID
10/12/2017	KSAT	SAT	SID TJANO (RNAV) ONE SAN ANTONIO TX KSAT	/A	FPT-INITIATED, RNAV SID
10/12/2017	KSAT	SAT	SID YODUH (RNAV) ONE SAN ANTONIO TX KSAT	/A	FPT-INITIATED, RNAV SID
10/12/2017	KSAT	SAT	STAR BRAUN (RNAV) THREE SAN ANTONIO TX KSAT	/A	RNAV STAR
10/12/2017	KSAT	SAT	STAR CRVZA (RNAV) ONE SAN ANTONIO TX KSAT	/A	FPT-INITIATED, RNAV STAR
10/12/2017	KSAT	SAT	STAR DNKIN (RNAV) ONE SAN ANTONIO TX KSAT	/A	FPT-INITIATED, RNAV STAR

10/12/2017	KSAT	SAT	STAR POPPO (RNAV) ONE SAN ANTONIO TX KSAT	/A	FPT-INITIATED, RNAV STAR
10/12/2017	KSAT	SAT	STAR QERVO (RNAV) ONE SAN ANTONIO TX KSAT	/A	FPT-INITIATED, RNAV STAR

NAVAID ID / RWY	Type / Old No.	Use / New RWY/Note
ANT	ILS	LOC
IZR	ILS	LOC
RWY	30	31
RWY	12	13
SAT	ILS	LOC

IF you have any questions please notify: [Tony.R.Lawson@faa.gov](mailto:Tony.R.Lawson@faa.gov) (405) 954-2788