

<b>Flight Procedure Tracking Form</b>		<b>Action:</b> FLIGHT CHECK	<b>Task Type:</b> SID	<b>Date Open:</b> 06/27/2016	<b>Task #:</b> 2015021029638001006	<b>Request #:</b> 20150210296380
<b>Procedure:</b> SID BOWIE SEVEN SAN ANTONIO TX SAT			<b>Airport ID:</b> KSAT	<b>Airport:</b> SAN ANTONIO INTL		<b>Reimbursable #:</b> NO
<b>City:</b> SAN ANTONIO	<b>ST:</b> TX	<b>GPS #:</b>	<b>Estimated Chart Date:</b> 03/02/2017		<b>FICO #:</b>	
<b>Fac ID:</b> N/A		<b>Fac. Type:</b>		<b>Specialist:</b> JOHN THORNTON		
<b>Procedure Review</b>						
	<b>Rec'd</b>	<b>Rel'd</b>	<b>Full Name</b>	<b>Comments</b>		
<b>Lead:</b>	06/27/2016			<div style="border: 2px solid green; padding: 5px; text-align: center;"> <b>APPROVED</b>  <i>By Eugene J Newton at 11:35 am, Nov 03, 2016</i> </div>		
<b>QA:</b>						
<b>Liaison:</b>						
<b>Procedure Comments:</b>			ENROUTE	<b>Remark Type:</b> INFORMATION		
<p>CONCURRENT WITH KSAT ILS OR LOC RWY 31L, AMDT 10C.</p> <p>ASSIGNED MAGVAR:  KSAT: OLD 8E - NEW 4E.  KSSF: 8E (NO CHANGE)</p> <p>REMARKS: REQUEST TABLE TOP ONLY FC EVAL.</p> <p>CONTACT: JULIE MORGAN 405.954.8568</p>						

(BOWIE7.BOWIE)  
**BOWIE SEVEN DEPARTURE**

SAN ANTONIO INTL (SAT)  
SAN ANTONIO, TEXAS

ATIS  
118.9  
CLNC DEL  
126.7  
CPDLC  
GND CON  
121.9 348.6  
SAN ANTONIO DEP CON  
125.7 290.225 (Rwys 13/22/31)  
127.1 269.1 (Rwy 4 CORPUS CHRISTI TRANSITION)  
125.1 307.0 (Rwy 4 LAREDO TRANSITION)  
SAN ANTONIO TOWER  
119.8 257.8

**TOP ALTITUDE:  
5000**

TAKEOFF MINIMUMS  
Rwys 4, 12L, 12R, 22,  
30L, 30R: Standard.

NOTE: RADAR Required.

COTULLA  
115.8 COT  
Chan 105

MILET  
N28°43.83'  
W98°47.88'

YENNS  
N29°04.08'  
W98°19.32'

THREE RIVERS  
111.4 THX  
Chan 51  
N28°30.30'  
W98°09.03'  
L-20, H-7

CORPUS CHRISTI  
115.5 CRP  
Chan 102  
N27°54.22'  
W97°26.69'  
L-20-21, H-7

LAREDO  
117.4 LRD  
Chan 121  
N27°28.72'  
W99°25.06'  
L-20, H-7

NOT FOR NAVIGATION

(NARRATIVE ON FOLLOWING PAGE)  
(NOTES CONTINUED ON FOLLOWING PAGE)

NOTE: Chart not to scale.

**DEPARTURE ROUTE DESCRIPTION**

TAKE-OFF RUNWAYS 4, 13L, 13R, 22, 31L, 31R: Climb on assigned heading for radar vectors to SAT VORTAC. Maintain 5000, thence. . .

. . . on transition/route. Expect filed altitude 10 minutes after departure.

CORPUS CHRISTI TRANSITION (BOWIE7.CRP): From over SAT VORTAC on SAT R-160 to YENNS INT/SAT 35 DME, then on THX R-337 to THX VORTAC, then on THX R-126 and CRP R-305 to CRP VORTAC.

LAREDO TRANSITION (BOWIE7.LRD): From over SAT VORTAC on SAT R-190 to MILET INT/SAT 57 DME, then on LRD R-015 to LRD VORTAC.

TAKE-OFF OBSTACLES:

Rwy 13R: Antenna on RTR tower, 1034' from DER, 723' right of centerline, 42' AGL/820' MSL.  
Building 3801' from DER, 1488' right of centerline, 117' AGL/881' MSL.

Rwy 22: Antenna on hangar and flagpole 1198' from DER, 700' right of centerline, 39' AGL/825' MSL.

Poles beginning 2209' from DER, 1041' right of centerline, up to 23' AGL/869' MSL.  
Sign 2713' from DER, 1034' right of centerline, 71' AGL/857' MSL.

Rwy 31L: Pole 1931' from DER, 911' left of centerline, 42' AGL/867' MSL.

Poles beginning 2356' from DER, 913' left of centerline, up to 42' AGL/892' MSL.  
Sign 2435' from DER, 1032' right of centerline, 42' AGL/873' MSL.

Tower 2766' from DER, 834' left of centerline, 54' AGL/891' MSL

Rwy 31R: Rod on obstruction light GS 1261' from DER, 591' left of centerline, 57' AGL/854' MSL.

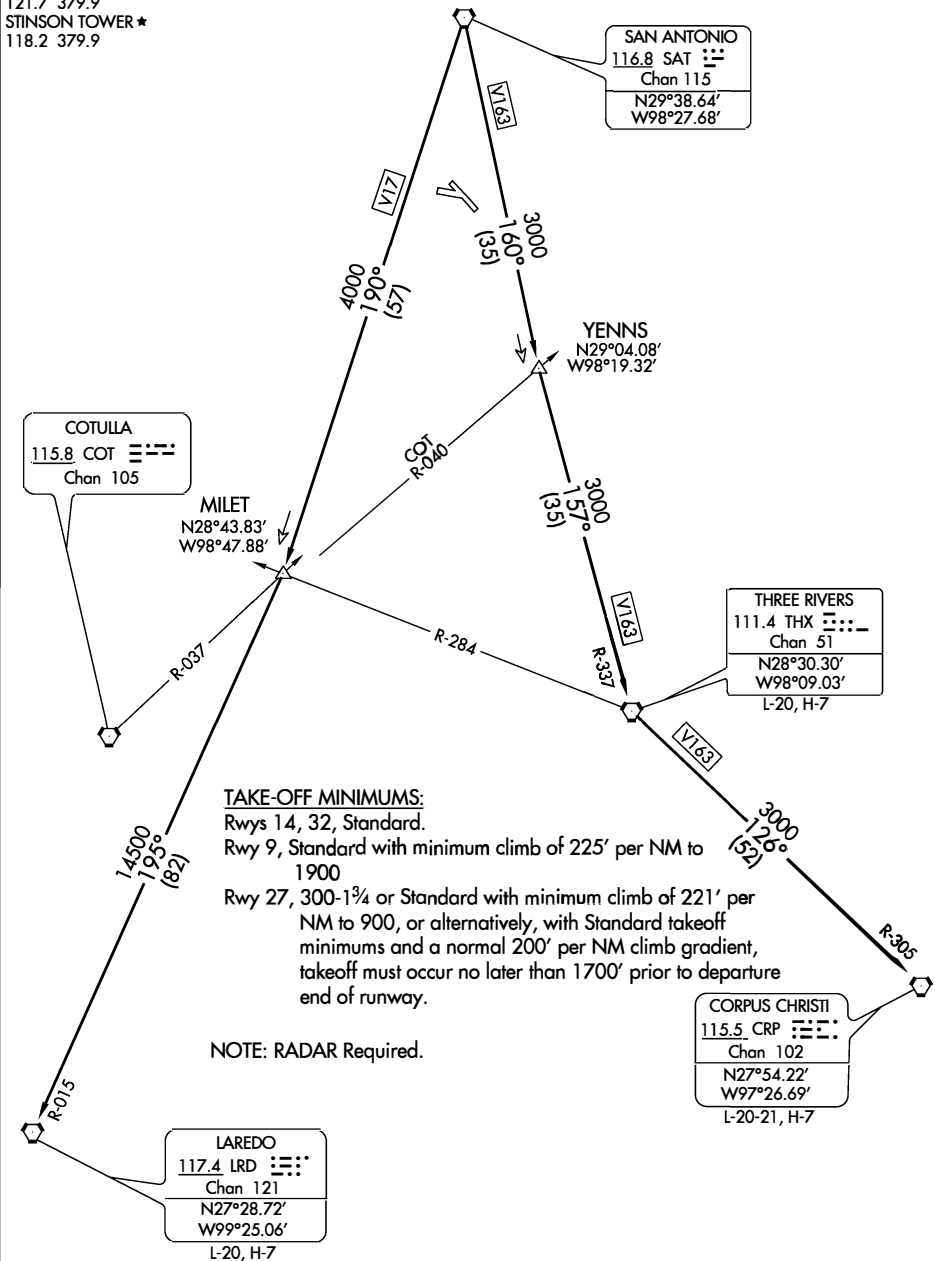
**NOT FOR NAVIGATION**

(BOWIE7.BOWIE)  
**BOWIE SEVEN DEPARTURE**

STINSON MUNI (SSF)  
SAN ANTONIO, TEXAS

ATIS  
128.8  
GND CON  
121.7 379.9  
STINSON TOWER ★  
118.2 379.9

NOT FOR NAVIGATION



(NARRATIVE ON FOLLOWING PAGE)

**BOWIE SEVEN DEPARTURE**  
(BOWIE7.BOWIE)

SAN ANTONIO, TEXAS  
STINSON MUNI (SSF)

**DEPARTURE ROUTE DESCRIPTION**

TAKE-OFF RUNWAYS 9, 14, 27, 32: Climb on assigned heading and altitude for radar vectors to SAT VORTAC, thence. . .

. . . on transition/route. Expect filed altitude 10 minutes after departure.

CORPUS CHRISTI TRANSITION (BOWIE7.CRP): From over SAT VORTAC on SAT R-160 to YENNS/SAT 35 DME, then on THX R-337 to THX VORTAC, then on THX R-126 and CRP R-305 to CRP VORTAC.

LAREDO TRANSITION (BOWIE7.LRD): From over SAT VORTAC on SAT R-190 to MILET/SAT 57 DME, then on LRD R-015 to LRD VORTAC.

**NOT FOR NAVIGATION**TAKE-OFF OBSTACLES:

- Rwy 9: Vehicle on road, 285' from DER, 380' left of centerline, 15' AGL/584' MSL.  
Trees beginning 1653' from DER, 435' right of centerline, up to 70' AGL/629' MSL.
- Rwy 14: Vehicle on road 114' from DER, on centerline extending 373' left of centerline, up to 15' AGL/564' MSL.  
Trees beginning 72' from DER, 79' right of centerline, up to 70' AGL/607' MSL.  
Trees beginning 232' from DER, 54' left of centerline, up to 70' AGL/618' MSL.  
Transmission line tower 4205' from DER, 133' right of centerline, 119' AGL/663' MSL.
- Rwy 27: Fence 41' from DER, 30' right of centerline, 8' AGL/584' MSL. Vehicle on road, 108' from DER, 202' right of centerline, 15' AGL/584' MSL. Vehicle on road 123' from DER, 113' right of centerline, 15' AGL/596 MSL. Trees and poles beginning 229' from DER, 117' right of centerline, up to 70' AGL/645' MSL. L.  
Trees and poles beginning 599' from DER, 8' left of centerline, up to 70' AGL/634' MSL. Building 1422' from DER, 432' right of centerline, 40' AGL/527' MSL. Building 2133' from DER, 36' left of centerline, 55' AGL/635' MSL. Tanks beginning 1.3 NM from DER, 1338' right of centerline, 179' AGL/799' MSL.
- Rwy 32: Fence 17' from DER, 80' left of centerline, 8' AGL/578' MSL.  
Vehicle on road 54' from DER, 199' left of centerline, 15' AGL/586' MSL.  
Trees beginning 164' from DER, 125' right of centerline, up to 70' AGL/639' MSL.  
Trees and poles beginning 43' from DER, 41' left of centerline, up to 75' AGL/668' MSL.