

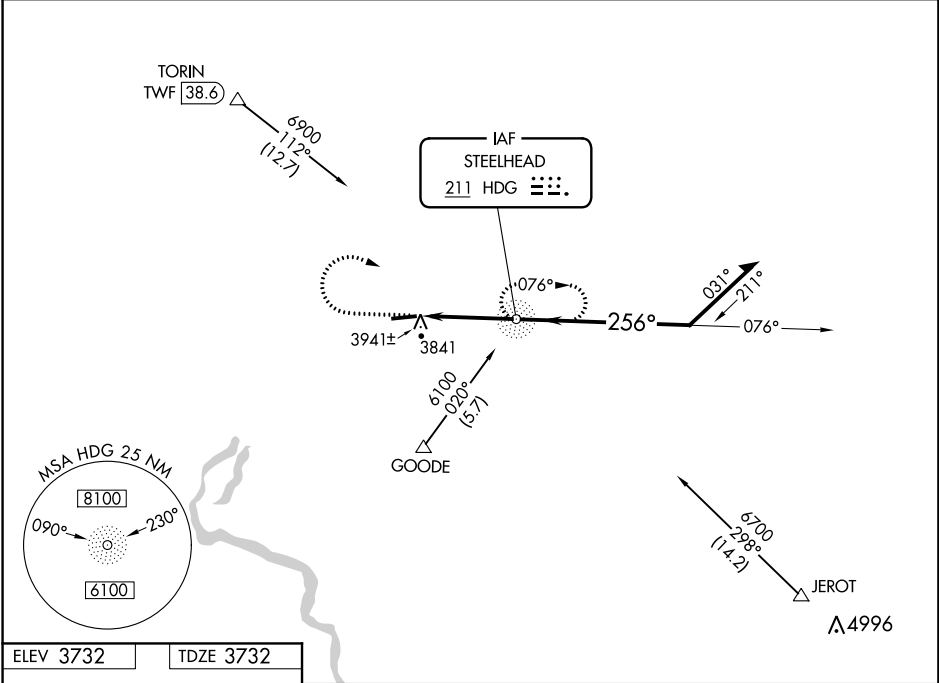
<b>Flight Procedure Tracking Form</b>		<b>Action:</b> CANCELLATION	<b>Task Type:</b> IAP	<b>Date Open:</b> 07/08/2015	<b>Task #:</b> 2015012929421303001	<b>Request #:</b> 20150129294213
<b>Procedure:</b> NDB RWY 25 AMDT 1A			<b>Airport ID:</b> KGNG	<b>Airport:</b> GOODING MUNI		<b>Reimbursable #:</b> NO
<b>City:</b> GOODING	<b>ST:</b> ID	<b>GPS #:</b>	<b>Estimated Chart Date:</b> 05/24/2018		<b>FICO #:</b>	
<b>Fac ID:</b> HDG		<b>Fac. Type:</b> NDB			<b>Specialist:</b> COLTON CROWDER	
<b>Procedure Review</b>						
	<b>Rec'd</b>	<b>Rel'd</b>	<b>Full Name</b>	<b>Comments</b>		
<b>Lead:</b>	11/21/2017			QUALITY		
<b>QA:</b>				22 12.28.2017 BD		
<b>Liaison:</b>				CHECKED		
<b>Procedure Comments:</b>			<b>Remark Type:</b> INFORMATION			
<p>STEELHEAD (HDG) NDB DECOMMISSIONED.</p> <p>CONTACT PAT MULQUEEN, 405.954.4073</p>						

NDB HDG <b>211</b>	APP CRS <b>256°</b>	Rwy Idg TDZE Apt Elev	<b>4745</b> <b>3732</b> <b>3732</b>
-----------------------	------------------------	-----------------------------	---

NDB RWY 25  
GOODING MUNI (GNG)

<b>NA</b> Helicopter visibility reduction below ¾ SM NA. Obtain local altimeter setting on CTAF; when not received use Jerome County altimeter setting. Night landing Rwy 25 NA for Cat C and D aircraft.	MISSED APPROACH: Climb to 4700 then climbing right turn to 5600 direct HDG NDB and hold.
---	--

SALT LAKE CENTER <b>118.05 363.0</b>	UNICOM <b>122.8 (CTAF) 0 *</b>
---	-----------------------------------



ELEV 3732	TDZE 3732
256° 3.6 NM from FAF	
1.4% UP → 4745 X 75	
3779±	
3819±	
MIRL Rwy 7-25 0 *	
FAF to MAP 3.6 NM	
Knots	60 90 120 150 180
Min:Sec	3:36 2:24 1:48 1:26 1:12

4700	5600	HDG	HDG NDB	Remain within 10 NM
↑	↶	○	076°	6100
2.93° TCH 40		4900	256°	
3.6 NM				
CATEGORY	A	B	C	D
S-25	4260-1	528 (600-1)	4260-1½ 528 (600-1½)	4260-1¾ 528 (600-1¾)
CIRCLING	4260-1	528 (600-1)	4260-1½ 528 (600-1½)	4300-2 568 (600-2)
JEROME COUNTY ALTIMETER SETTING MINIMUMS				
S-25	4340-1	608 (700-1)	4340-1¾ 608 (700-1¾)	4340-2 608 (700-2)
CIRCLING	4340-1	608 (700-1)	4340-1¾ 608 (700-1¾)	4340-2 608 (700-2)

# Federal Aviation Administration Categorical Exclusion Declaration

**Date:** 11/28/2017

**IFP:** Sutton, Brandon (Brandon.Sutton@faa.gov)

**Airport Contact:** N/A

**Request ID:** KGNG\_171121\_38

**Single or Multiple Procedure:**

Single

**Procedure Name(s):**

NDB RWY 25

**Procedure Request Description:**

Cancel the NDB RWY 25 procedure due to non federal NDB being decommissioned.

## **Declaration of Exclusion:**

The FAA has reviewed the above referenced proposed action and it has been determined, by the undersigned, to be categorically excluded from further environmental documentation according to FAA Order 1050.1, "Environmental Impacts: Policies and

Procedures." The implementation of this action will not result in any extraordinary circumstances in accordance with FAA Order 1050.1.

**Basis for this Determination:**

This review was conducted in accordance with policies and procedures in Department of Transportation Order 5610.1, "Procedures for Considering Environmental Impacts" and FAA Order 1050.1.

**The applicable Categorical Exclusion is:**

- 5-** Publication of existing air traffic control procedures that  
**6.5.k:** do not essentially change existing tracks, create new tracks, change altitude, or change concentration of aircraft on these tracks. (ATO, AVS)

**The above flight procedure has been developed within the accepted parameters.**

Concurrence/Reviewed By:

for Marina Landis

Date:

Title:

Approved By:

Date:

Title:

## RAPT Consensus Form

Date: 7-16-2015

Airport Name: ANM Various Airports

ICAO:

State:

Project Request: NDB MAGVAR Initiative (Tiger Team) - NDB MagVar Rotation for multiple Western Service Area NDBs

Project Request Approved: ☒

Disapproved: ☐ (see comments)

Comments:


Scope of Project: NDB MAGVAR Initiative (Tiger Team) to rotate all NDBs that are out of tolerance across the nation. On a separate page is a list of NDBs that need MagVar rotations and can be added to projects already scheduled in PTS.

Priority Assigned: 2

Project Tracking Number:

  
Service Center Flight Procedures Team

  
Service Center Air Traffic Operations Support

  
Flight Standards Division NextGen Branch

  
Airports Division

  
Service Center Planning and Requirements Group

REGION	NDB	MV TOLERANCE	NDB RAW VALUE	ICAO	TOLERANCE	MV RAW VALUE	NDB AFFECTED PROCEDURES	MV AFFECTED PROCEDURES
ANM	ALWAL	6°	5.8	KALW	6°	5.8	ILS Y OR LOC RWY 20 ALW ILS Z OR LOC/DME RWY 20 VOR RWY 20 NDB RWY 20 (being cancelled, navaid orphaned)	T/O RNAV (GPS) RWY 02 RNAV (GPS) RWY 20 VOR/DME RWY 20 WALLA WALLA DEPARTURE
ANM	BFIBF	5°	5	KBFI	5°	5	ILS RWY 13R LOC/DME RWY 13R	T/O CHINS TWO EPHRATA SEVEN GLASR NINE JAWBN THREE OLYMPIA NINE ILS OR LOC RWY 31L RNAV (RNP) Z RWY 13R RNAV (GPS) Y RWY 13R HARBOR VISUAL RWY 13R KENT SEVEN NEEDLE NINE
ANM	BIBI	3°	3	KBIL	4°	4	HI ILS OR LOC RWY 10L ILS OR LOC/DME RWY 10L ILS OR LOC/DME RWY 28R NDB RWY 10L	T/O BGHRN ONE (RNAV) CRAZI ONE (RNAV) KUSTR ONE (RNAV) YLSTN ONE (RNAV) RNAV (RNP) Z RWY 28R RNAV (GPS) RWY 7 RNAV (GPS) RWY 25 RNAV (GPS) Y 10L RNAV (GPS) Y RWY 28R VOR/DME RWY 28R HI VOR/DME TACAN RWY 28R VOR-A BILLINGS FOUR
ANM	CLMCL	6°	6	KCLM	6°	6	WATTR -GRAP DP ILS OR LOC RWY 8	RNAV (GPS) RWY 08 RNAV (GPS) RWY 26 T/O
ANM	CPRCP	3°	3	KCPR	3°	2.93	ILS OR LOC RWY 8 (CNX)	
ANM	CRK	6°	6	KSFF	2°	2	VOR RWY 04L (needs to say cancellation)	
ANM	DAO	4°	4	KFHU	1°	1	NDB RWY 26	
ANM	GCCGC	3°	3	KGCC	3°	3.3	ILS OR LOC RWY 34	T/O RNAV (GPS) RWY 16 RNAV (GPS) RWY 34 VOR/DME RWY 16 VOR/DME RWY 34 (being cancelled)
ANM	GEY	4°	4	KGEY	4°	4	NDB RWY 34 TAKEOFF MINS	RNAV (GPS) RWY 07 RNAV (GPS) RWY 34 PECKK ONE (RNAV)

REGION	NDB	MV TOLERANCE	NDB RAW VALUE	ICAO	TOLERANCE	MV RAW VALUE	NDB AFFECTED PROCEDURES	MV AFFECTED PROCEDURES
ANM	HAU	4°	4	KHLN	4°	4	ILS OR LOC Y RWY 27 ILS OR LOC Z RWY 27	T/O RNAV (RNP) Y RWY 27 RNAV (RNP) Z RWY 27 RNAV (RNP) Z RWY 9 RNAV (GPS) Z RWY 09 RNAV (GPS) RWY 23 RNAV (GPS) X RWY 27 RNAV (GPS) Y RWY 09 LOC/DME BC-C VOR/DME-B VOR-A NDB-D COPTER VOR 251 DIVIDE ONE HELENA THREE SIEBE THREE STAKK THREE
ANM	HDG	3°	3.48	KGNG	3°	3.45	NDB RWY 25	RNAV (GPS) RWY 25 RNAV (GPS) RWY 7
ANM	IDAID	3°	3.33	KIDA	3°	3.3	ILS OR LOC RWY 20 NDB RWY 20 (NDB being orphaned, procedure cancelled)	T/O LOC BC RWY 2 RNAV (RNP) Z RWY 2 RNAV (RNP) Z RWY 20 RNAV (GPS) Y RWY 02 RNAV (GPS) Y RWY 20 VOR RWY 02 VOR RWY 20 NDB RWY 20
ANM	IHS	4°	4	KFCS	4°	4	COPTER NDB 314	RNAV (GPS) RWY 31 VOR RWY 31 COPTER NDB RWY 31 FORT CARSON CO KFCS
ANM	INE	4°	4	KMSO	4°	4	SID DIDLY THREE SID MZULA THREE	T/O ILS Y RWY 11 ILS Z RWY 11 RNAV (RNP) RWY 29 RNAV (GPS) Y RWY 11 RNAV (GPS)-D VOR/DME-A VOR/DME-B GRZLY TWO
ANM	ITR	4°	4	KITR	4°	4	LOC RWY 33 NDB RWY 15	T/O RNAV (GPS) RWY 15
ANM	LGD	3	3	KLGD	3°	3.03	NDB-B TAKEOFF MINS	RNAV (GPS) RWY 16
ANM	LWG	3°	3	KCVO	3°	3.1	ILS OR LOC RWY 17 NDB RWY 17 (needs to say cancellation)	T/O DVA RNAV (GPS) RWY 17 RNAV (GPS) RWY 35 VOR/DME RWY 17 VOR/DME RWY 35 VOR-A CORVALLIS TWO SHEDD TWO
ANM	MNC	4°	4	KPWT	1°	1	ILS OR LOC RWY 20	



REGION	NDB	MV TOLERANCE	NDB RAW VALUE	ICAO	TOLERANCE	MV RAW VALUE	NDB AFFECTED PROCEDURES	MV AFFECTED PROCEDURES
ANM	MNC	4°	4	KSHN	4°	4	NDB-A	T/O RNAV (GPS) RWY 23 RNAV (GPS) RWY 05
ANM	MWHM W	3°	3.3	KMWH	3°	3.3	ILS OR LOC RWY 32R NDB RWY 32R VOR RWY 32R	T/O RNAV (RNP) Z RWY 04 RNAV (RNP) Z RWY 14L RNAV (RNP) Z RWY 22 RNAV (RNP) Z RWY 34R RNAV (GPS) Y RWY 04 RNAV (GPS) Y RWY 14L RNAV (GPS) Y RWY 22 RNAV (GPS) Y RWY 32R VOR RWY 04 VOR RWY 22 VOR-A RWY 14L VOR-3 RWY 14L MOSES THREE
ANM	ONO	4°	4	KONO	4°	4	NDB RWY 32	T/O RNAV (GPS) RWY 14 RNAV (GPS) RWY 32
ANM	PIHPI	5°	5	KPIH	2°	2	ILS OR LOC RWY 21	
ANM	PND	6°	6	KHIO	1°	1	NDB-B ILS OR LOC 13R	
ANM	SWU	3°	3.28	KIDA	3°	3.3	LOC BC RWY 2	T/O ILS OR LOC RWY 20 RNAV (RNP) Z RWY 2 RNAV (RNP) Z RWY 20 RNAV (GPS) Y RWY 02 RNAV (GPS) Y RWY 20 VOR RWY 02 VOR RWY 20 NDB RWY 20
ANM	SZT	4°	4	KSZT	4°	4	LOC/DME-A	T/O RNAV (GPS) -B
ANM	TOR	3°	3.27	KTOR	3°	3.27	NDB RWY 10 NDB RWY 28	T/O GPS RWY 10 GPS RWY 28
ANM	ONPON	4°	4	KONP	4°	4	ILS OR LOC RWY 16	T/O RNAV (GPS) RWY 16 RNAV (GPS) RWY 34 VOR/DME RWY 16 VOR/DME RWY 34 VOR-A