

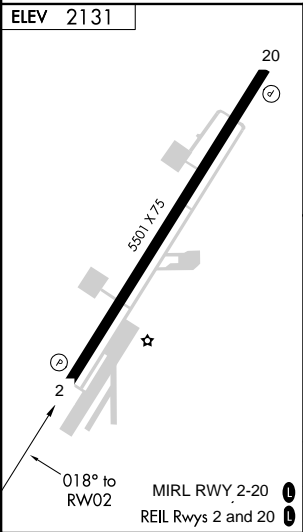
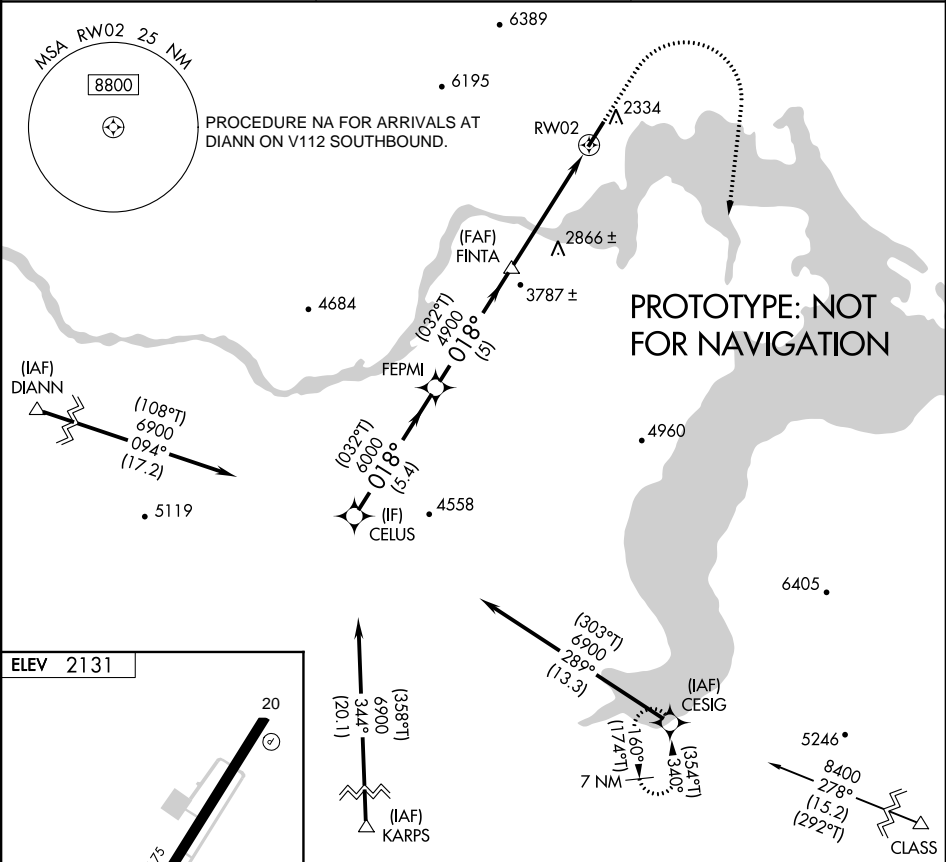
<b>Flight Procedure Tracking Form</b>		<b>Action:</b> FLIGHT CHECK	<b>Task Type:</b> IAP	<b>Date Open:</b> 01/29/2015	<b>Task #:</b> 2015012926480901001	<b>Request #:</b> 20150129264809
<b>Procedure:</b> RNAV (GPS)-B AMDT 1			<b>Airport ID:</b> KSZT	<b>Airport:</b> SANDPOINT		<b>Reimbursable #:</b> NO
<b>City:</b> SANDPOINT	<b>ST:</b> ID	<b>GPS #:</b>	<b>Estimated Chart Date:</b> 05/26/2016		<b>FICO #:</b>	
<b>Fac ID:</b> N/A		<b>Fac. Type:</b>			<b>Specialist:</b> AISHAT NAUZO	
<b>Procedure Review</b>						
	<b>Rec'd</b>	<b>Rel'd</b>	<b>Full Name</b>	<b>Comments</b>		
<b>Lead:</b>	10/06/2015					
<b>QA:</b>				LCB 03/10		
<b>Liaison:</b>						
<b>Procedure Comments:</b>			ENROUTE-NON	<b>Remark Type:</b> INFORMATION		
DIGITAL PROCESS CONTACT ALLAN WILL: 405-954-6103  ASSIGNED MAGVAR: KSZT OLD 18E-NEW 14E.						

APP CRS	Rwy Idg	N/A
018°	TDZE	N/A
	Apt Elev	2131

RNAV (GPS)-B  
SANDPOINT (SZT)

<p>▼</p> <p>▲</p> <p>☼</p> <p>-21°C/-6°F</p>	<p>DME/DME RNP-0.3 NA. CIRCLING NA W OF RWY 2-20.</p> <p>WHEN LOCAL ALTIMETER NOT RECEIVED, USE DEER PARK ALTIMETER SETTING AND INCREASE ALL MDA 120 FT.</p>	<p>MISSED APPROACH: Climb to 5800 then climbing right turn to 7900 direct CESIG and hold.</p>
--	--	---

AWOS-3 135.425	SEATTLE CENTER 123.95 290.55	UNICOM 122.7 (CTAF) 0
-------------------	---------------------------------	--------------------------

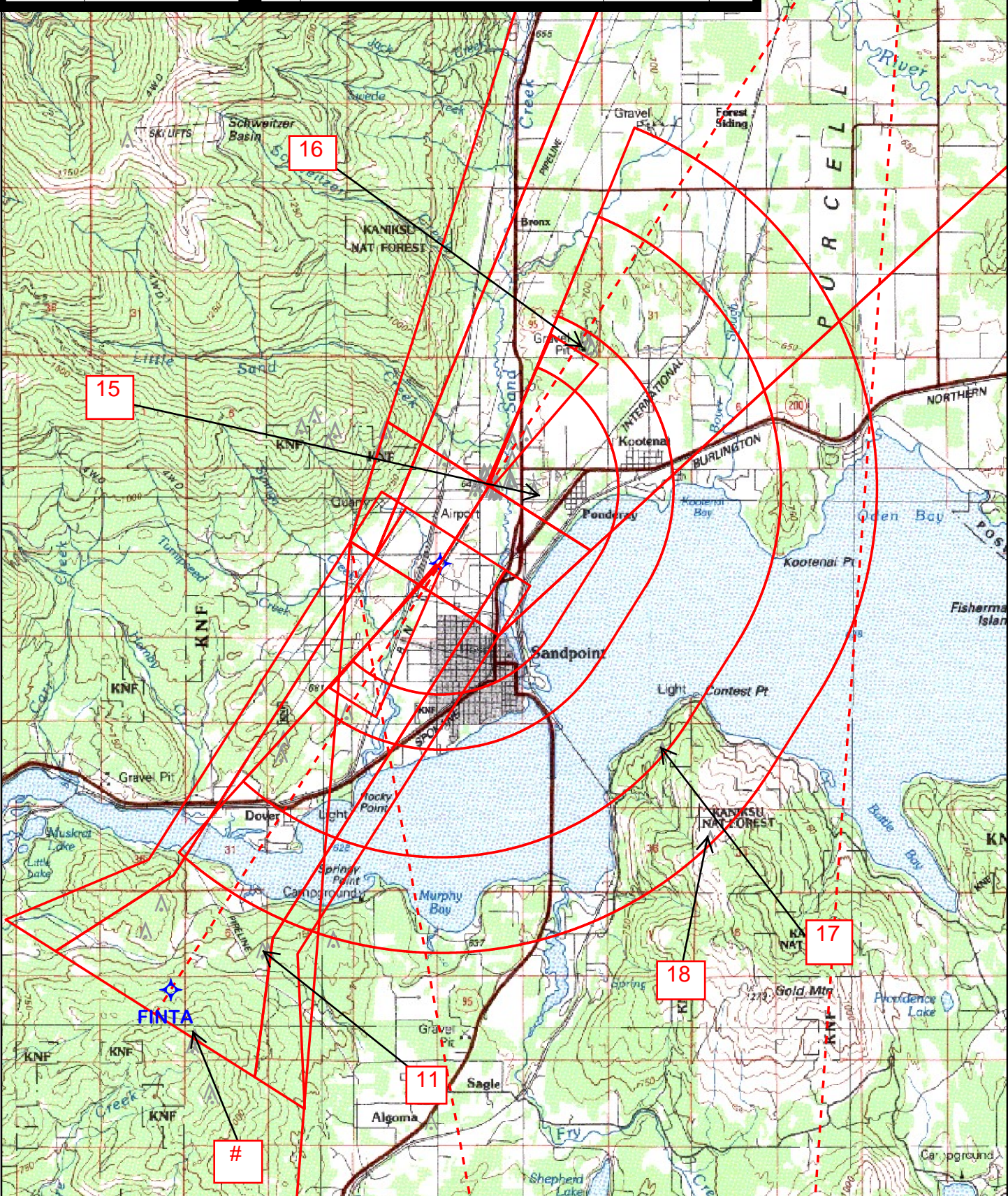


CELUS				5800	7900	CESIG
6900				↑	↷	☼
(032°T) 018°						
FEPMI						
6000						
FINTA						
4900						
RW02						
5.4 NM						
5 NM						
5.2 NM						
CATEGORY	A	B	C	D		
	3600-1¼	3600-1½	3600-3	4180-3		
☼ CIRCLING	1469 (1500-1¼)	1469 (1500-1½)	1469 (1500-3)	2049 (2100-3)		



Airport ID:	<b>KSZT</b>
Apt Name:	<b>SANDPOINT</b>
City:	<b>SANDPOINT</b>
State:	<b>ID</b>
Proc ID:	<b>RNAV (GPS)-B</b>
Number:	<b>AMDT 1</b>
Scale:	<b>1:100,000</b>

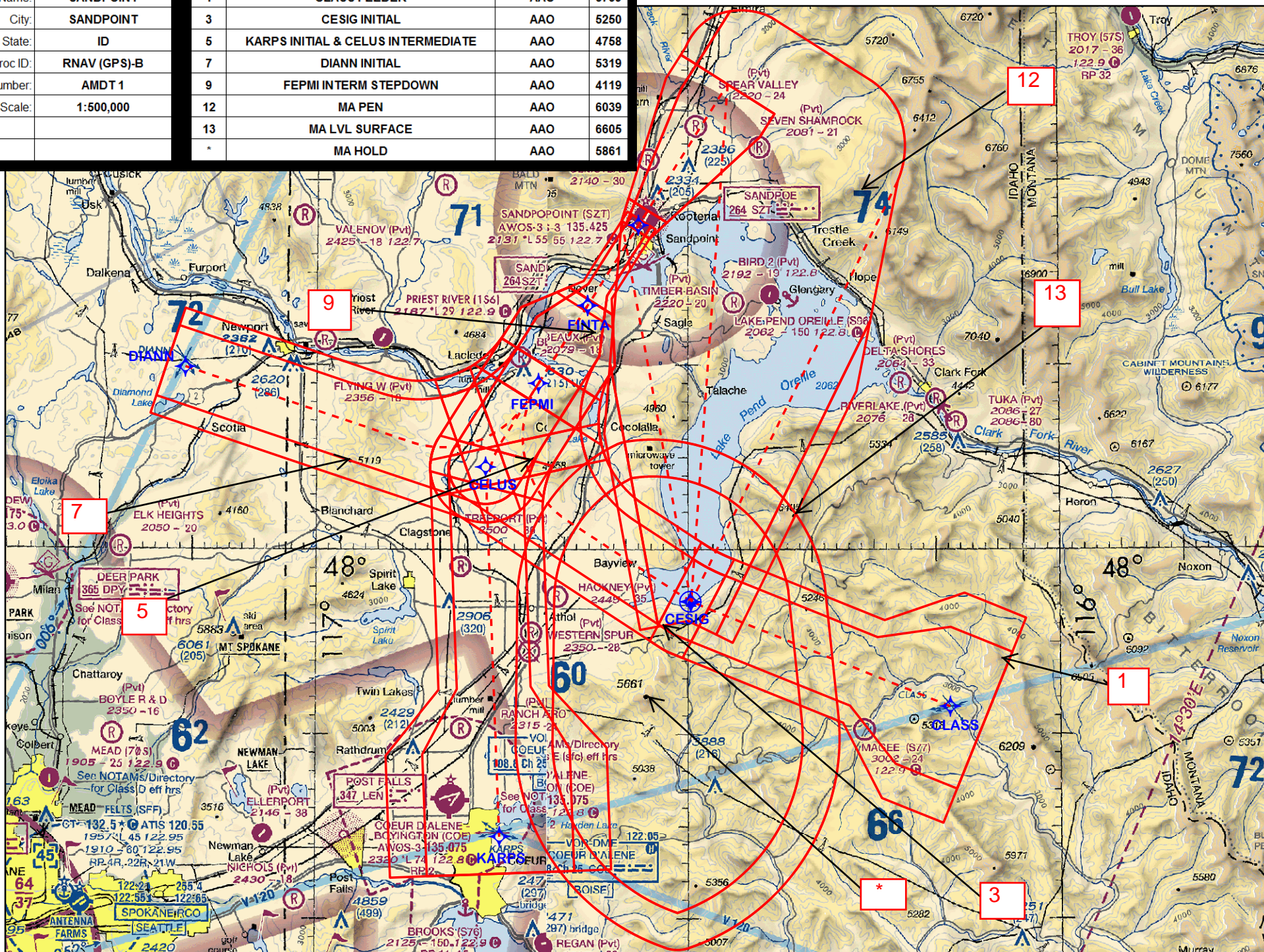
ID	SEGMENT	OBSTRUCTION	ELEV
11	LNAV FINAL	AAO	2959
#	LNAV FINAL PARA 289	AAO	3999
15	CIRCLING CAT A	TOWER	2334
16	CIRCLING CAT B	TREE	2570
17	CIRCLING CAT C	TREE	2819
18	CIRCLING CAT D	AAO	3879





Airport ID:	KSZT
Apt Name:	SANDPOINT
City:	SANDPOINT
State:	ID
Proc ID:	RNAV (GPS)-B
Number:	AMDT 1
Scale:	1:500,000

ID	SEGMENT	OBSTRUCTION	ELEV
1	CLASS FEEDER	AAO	5739
3	CESIG INITIAL	AAO	5250
5	KARPS INITIAL & CELUS INTERMEDIATE	AAO	4758
7	DIANN INITIAL	AAO	5319
9	FEPMI INTERM STEPDOWN	AAO	4119
12	MA PEN	AAO	6039
13	MA LVL SURFACE	AAO	6605
*	MA HOLD	AAO	5861





# TERMINAL AIRSPACE DATA REQUIREMENTS

CITY:

STATE:

AIRPORT NAME:

ID:

PROCEDURE:

AMDT:

DOCKET # :

(96-AXX-X/Required/Not Required)

**ALL DIST TO 1/100 NM; ELEV TO NEAREST FT; COORD TO 1/100 SEC; DEG TO 1/100 DG.**

1. Distance from \_\_\_\_\_ to 1000' point \_\_\_\_\_

(Enter THLD, FAF, ARP, FACILITY, as appropriate)

2. Width of \_\_\_\_\_ segment at 1000' point \_\_\_\_\_

(Enter appropriate segment , final, intermediate, etc.)

3. True Course of \_\_\_\_\_ segment containing 1000' point \_\_\_\_\_

4. High Terrain in \_\_\_\_\_ segment containing 1000' point \_\_\_\_\_

5. Distance from \_\_\_\_\_ to 1500' point \_\_\_\_\_

(If 1500' point in PT maneuvering area or holding pattern note in remarks)

6. Width of \_\_\_\_\_ segment at 1500' point \_\_\_\_\_

7. True Course of \_\_\_\_\_ segment containing 1500' point \_\_\_\_\_

8. High Terrain in \_\_\_\_\_ segment containing 1500' point \_\_\_\_\_

9. Threshold Coordinates (if straight-in) ... \_\_\_\_\_ / \_\_\_\_\_

10. ARP Coordinates ..... \_\_\_\_\_ / \_\_\_\_\_

11. Runway Approach End and distance furthest from ARP.....RWY \_\_\_\_\_

Distance \_\_\_\_\_ NM

12. FAF Coordinates ..... \_\_\_\_\_ / \_\_\_\_\_

(Click to Select)

**REMARKS:**