

<b>Flight Procedure Tracking Form</b>		<b>Action:</b> FLIGHT CHECK	<b>Task Type:</b> IAP	<b>Date Open:</b> 03/10/2015	<b>Task #:</b> 2015012818163301001	<b>Request #:</b> 20150128181633
<b>Procedure:</b> RNAV (GPS) RWY 33 AMDT 1			<b>Airport ID:</b> PFSH	<b>Airport:</b> SHAKTOOLIK		<b>Reimbursable #:</b> NO
<b>City:</b> SHAKTOOLIK	<b>ST:</b> AK	<b>GPS #:</b>	<b>Estimated Chart Date:</b> 06/20/2019		<b>FICO #:</b>	
<b>Fac ID:</b> N/A		<b>Fac. Type:</b>			<b>Specialist:</b> JOHN LINDSEY	
<b>Procedure Review</b>						
	<b>Rec'd</b>	<b>Rel'd</b>	<b>Full Name</b>	<b>Comments</b>		
<b>Lead:</b>	02/18/2016	01/08/2019	DAVID DANNER	QUALITY		
<b>QA:</b>	01/08/2019			44		
<b>Liaison:</b>				CHECKED		
<b>Procedure Comments:</b> ENROUTE-NON <b>Remark Type:</b> INFORMATION  PENDING AIRPORT DATA USED  ASSIGNED MAGVAR: PFSH: OLD 15E - NEW 11E  CONTACT DAVID DANNER (405) 954-5077 OR JULIE A. MORGAN (405) 954-8568						

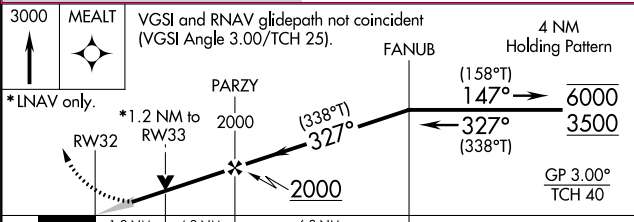
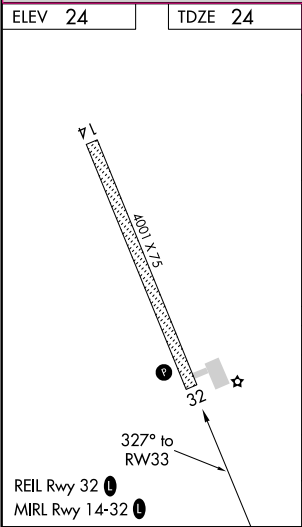
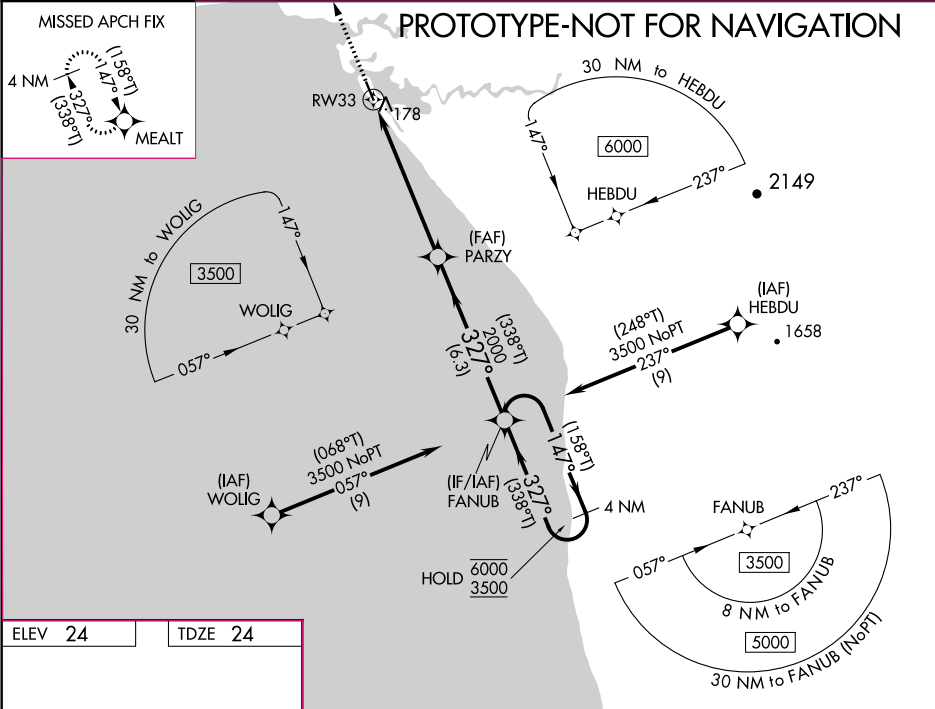
WAAS CH <b>69413</b> <b>W33A</b>	APP CRS <b>327°</b>	Rwy Idg <b>4001</b> TDZE <b>24</b> Apt Elev <b>24</b>
--	------------------------	---

NEW

RNAV (GPS) RWY 33  
SHAKTOOLIK (2C7) (PFSH)

RNP APCH. ⚠ Baro-VNAV and VDP NA when using Unalakleet altimeter setting. For uncompensated Baro-VNAV systems. LNAV/VNAV NA below -20°C or above 54°C. When local altimeter setting not received, use Unalakleet altimeter setting and increase all DA 72 feet and all MDA 80 feet and increase LNAV/VNAV all Cats visibility 1/8 SM and LNAV Cat C and D and Circling Cat D visibility 1/4 SM.	MISSED APPROACH: Climb to 3000 direct MEALT and hold.
--	---

AWOS-3 <b>121.55</b>	ANCHORAGE CENTER <b>135.7 335.5</b>	UNICOM <b>122.8 (CTAF) 0</b>
-------------------------	--	---------------------------------



CATEGORY	A	B	C	D
LPV DA		274-1	250 (300-1)	
LNAV/VNAV DA		339-1	315 (400-1)	
LNAV MDA	440-1	416 (500-1)	440-1 1/8	416 (500-1 1/8)
CIRCLING	480-1	456 (500-1)	480-1 1/2 456 (500-1 1/2)	740-2 1/4 716 (800-2 1/4)

WAAS  
CH **69413**  
**W32A**

APP CRS  
**323°**

Rwy Idg  
TDZE **24**  
Apt Elev **24**

OLD

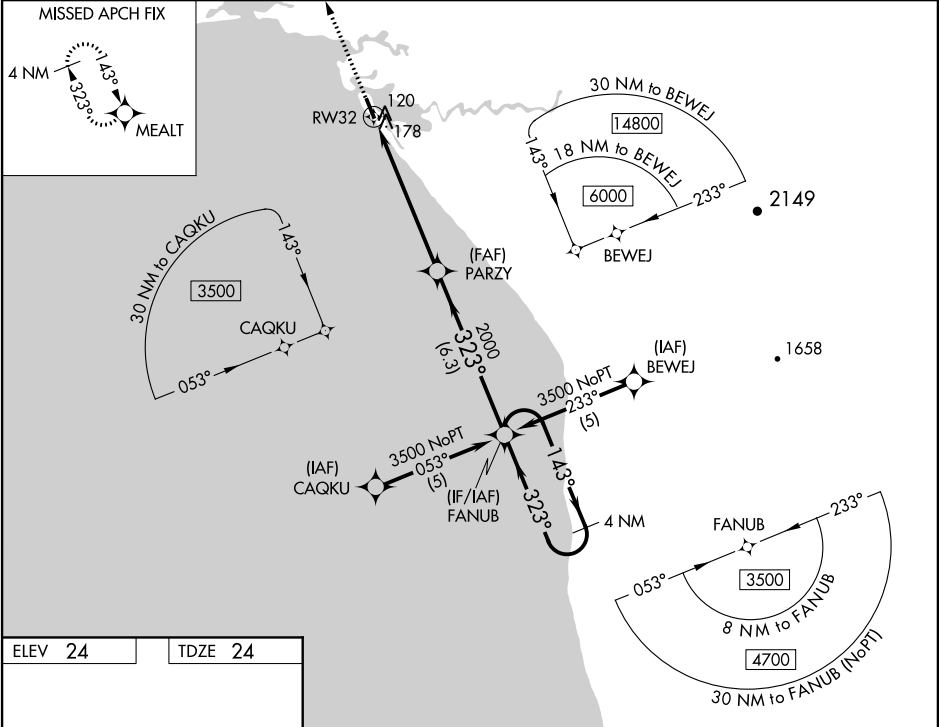
RNAV (GPS) RWY 32

SHAKTOOLIK (2C7) (PFSH)

Baro-VNAV NA, DME/DME RNP-0.3 NA.  
Use Unalakleet altimeter setting, when not received, use Koyuk  
altimeter setting and increase all DA 25 feet and all MDA 40 feet.

MISSED APPROACH: Climb to 2500  
direct MEALT and hold.

AWOS-3 <b>121.55</b>	UNALAKLEET AWOS-3 <b>132.25</b>	ANCHORAGE CENTER <b>135.7 335.5</b>	UNICOM <b>122.8 (CTAF) 0</b>
-------------------------	------------------------------------	--	---------------------------------



2500

MEALT

VGSI and RNAV glidepath not coincident  
(VGSI Angle 3.00°/TCH 25).

4 NM Holding Pattern

RW32

PARZY

FANUB

143°

323°

3500

2000

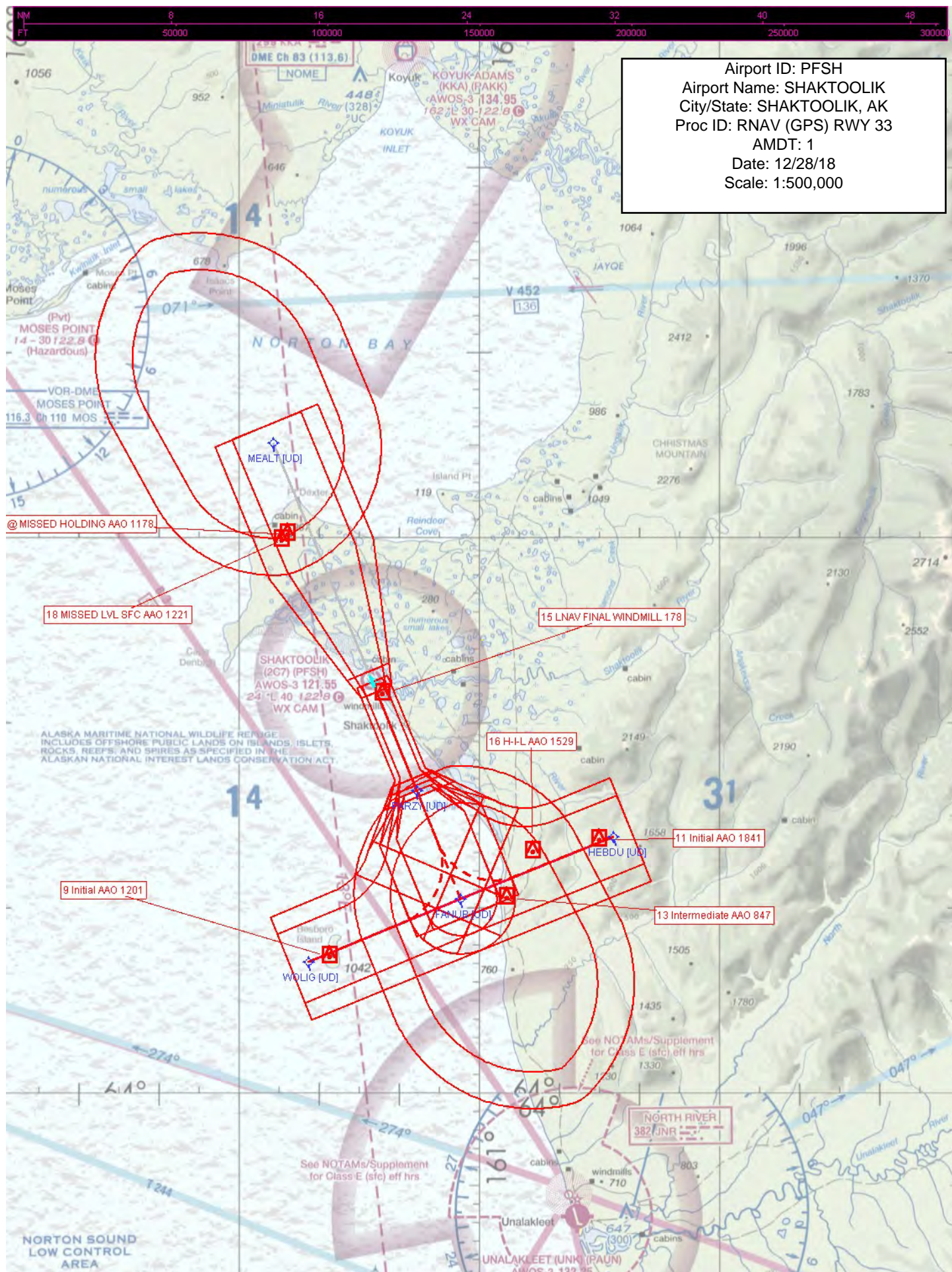
6 NM

6.3 NM

GP 3.00°

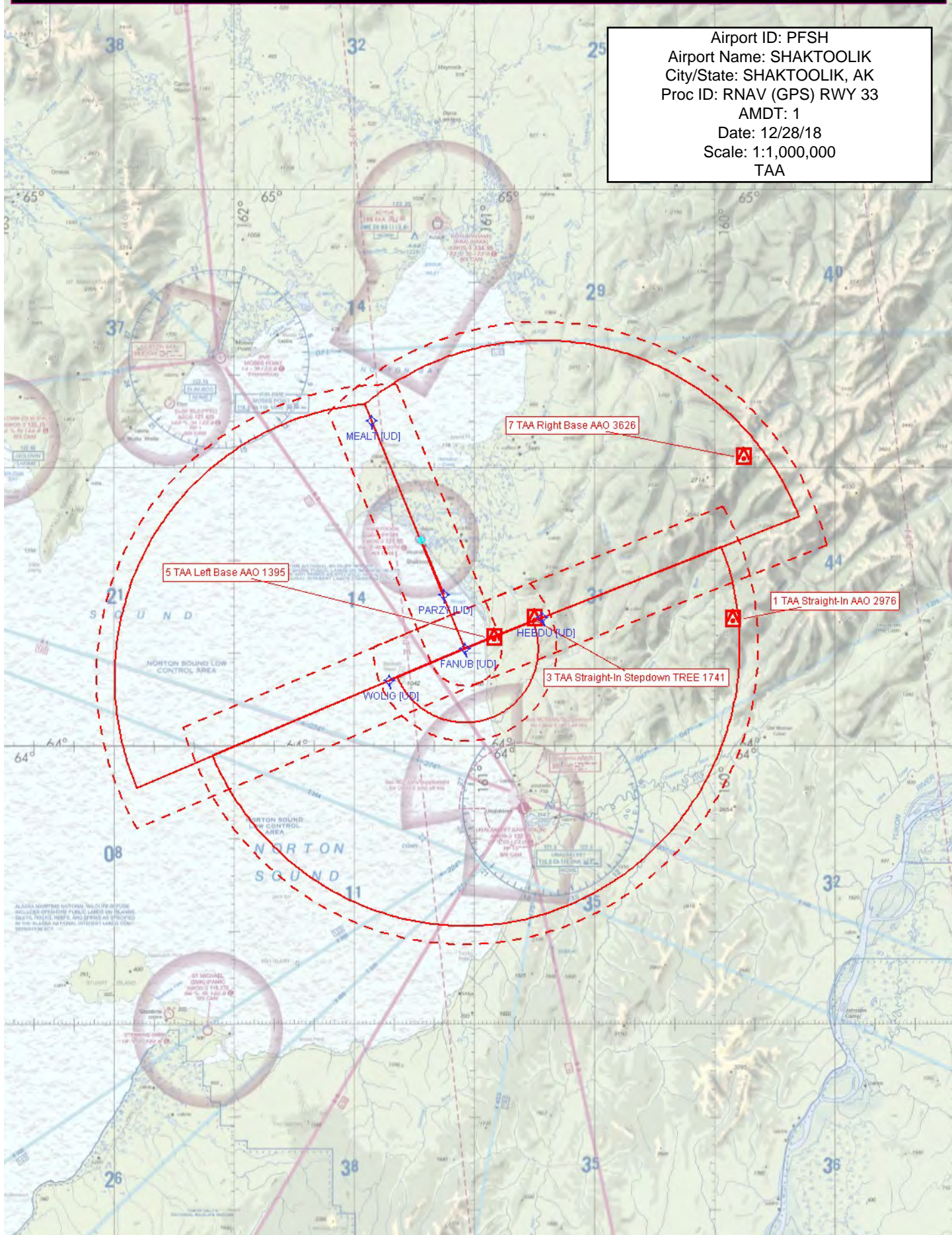
TCH 40

CATEGORY	A	B	C	D
LPV DA	347-1¼ 323 (400-1¼)			
LNAV/VNAV DA	493-1¾ 469 (500-1¾)			
LNAV MDA	540-1	516 (600-1)	540-1½ 516 (600-1½)	540-1¾ 516 (600-1¾)
CIRCLING	560-1	536 (600-1)	560-1½ 536 (600-1½)	580-2 556 (600-2)





Airport ID: PFSH  
Airport Name: SHAKTOOLIK  
City/State: SHAKTOOLIK, AK  
Proc ID: RNAV (GPS) RWY 33  
AMDT: 1  
Date: 12/28/18  
Scale: 1:1,000,000  
TAA





NM  
FT 10000 20000 30000 40000 50000 60000

Airport ID: PFSH  
Airport Name: SHAKTOOLIK  
City/State: SHAKTOOLIK, AK  
Proc ID: RNAV (GPS) RWY 33  
AMDT: 1  
Date: 12/28/18  
Scale: 1:100,000  
LNAV FINAL

15 LNAV FINAL WINDMILL 178

PARZY [UDI]

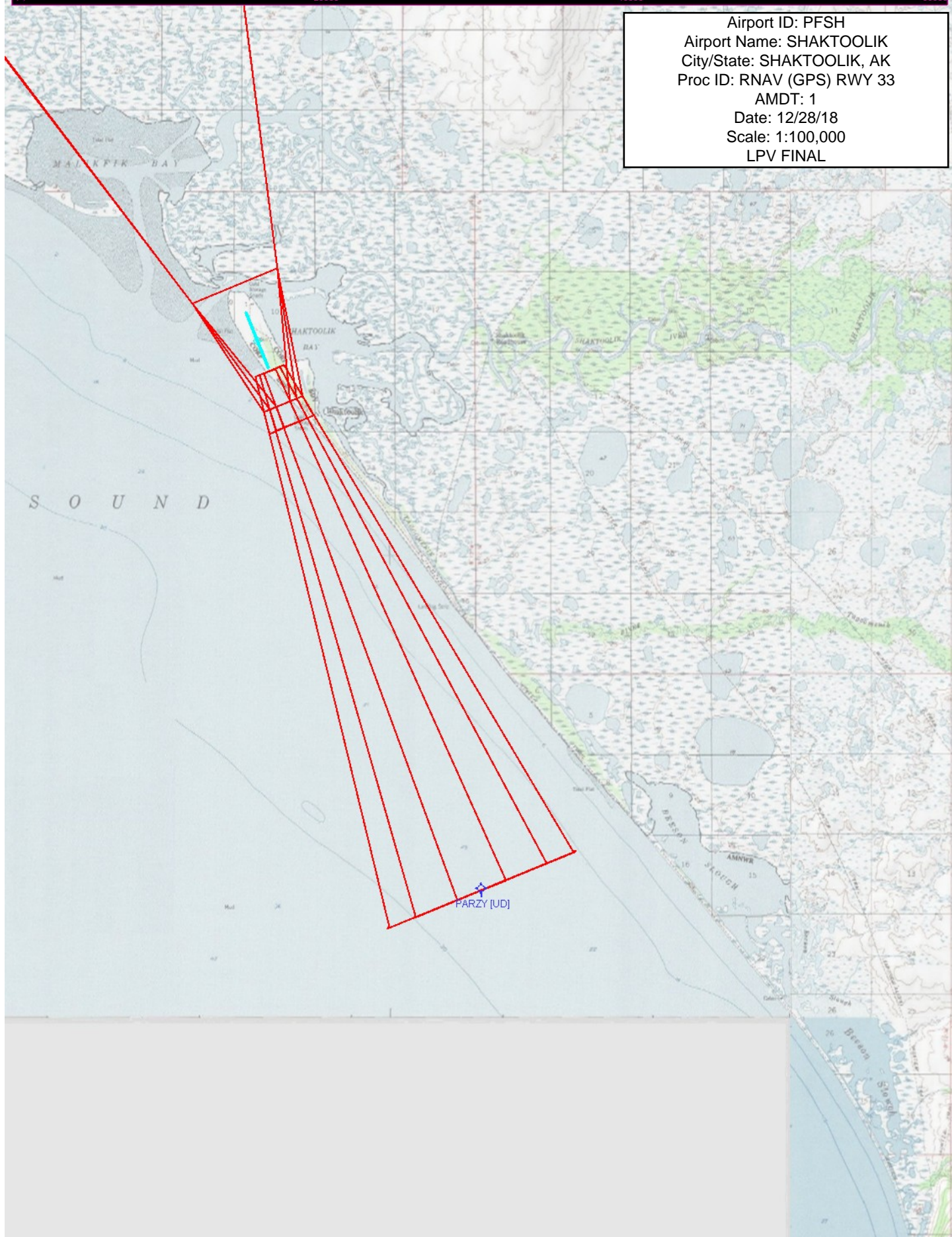


NM  
FT

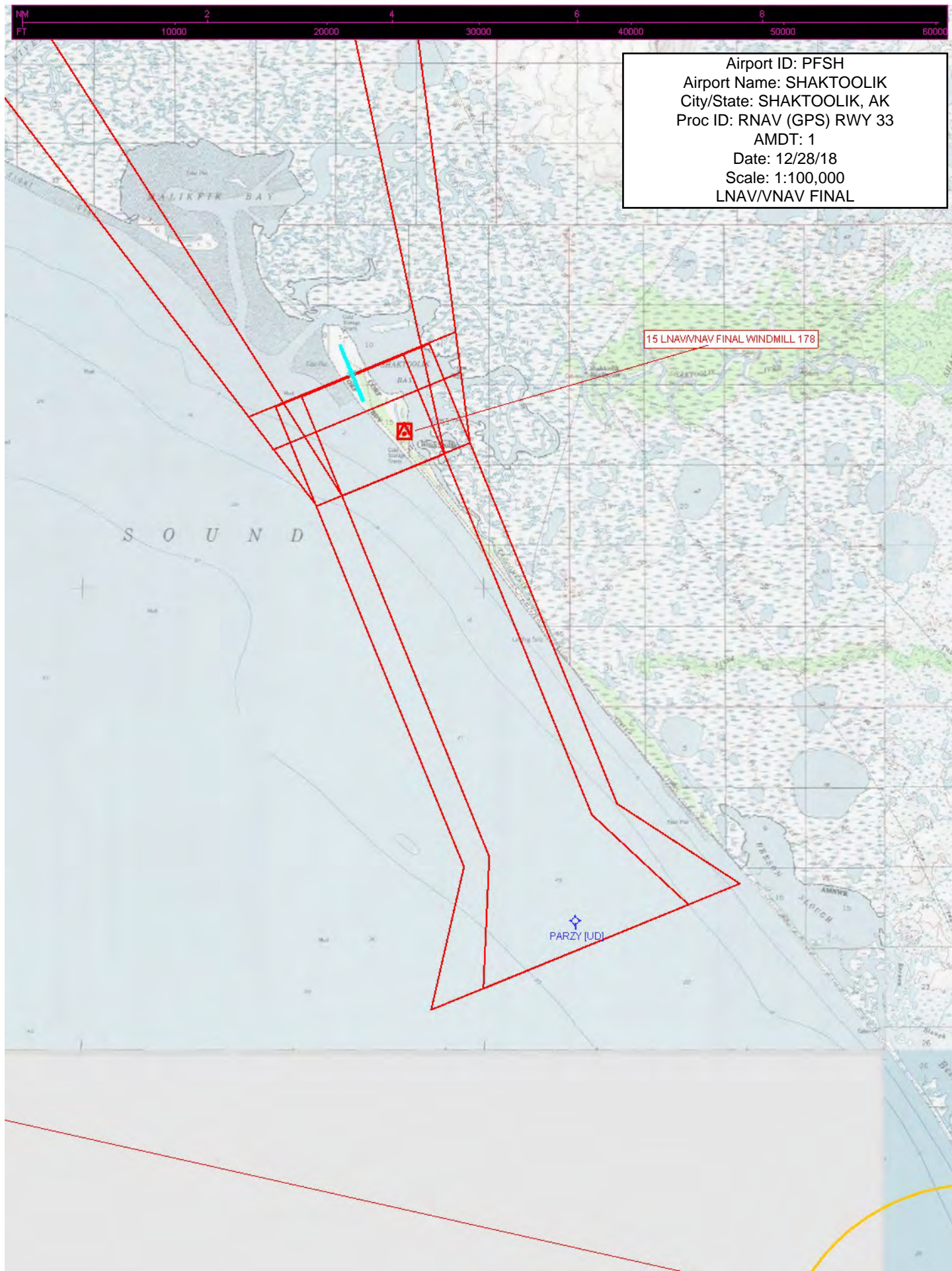
2 4 6 8

20000 40000 60000

Airport ID: PFSH  
Airport Name: SHAKTOOLIK  
City/State: SHAKTOOLIK, AK  
Proc ID: RNAV (GPS) RWY 33  
AMDT: 1  
Date: 12/28/18  
Scale: 1:100,000  
LPV FINAL









NM  
FT 10000 20000 30000 40000 50000 60000

Airport ID: PFSH  
Airport Name: SHAKTOOLIK  
City/State: SHAKTOOLIK, AK  
Proc ID: RNAV (GPS) RWY 33  
AMDT: 1  
Date: 12/28/18  
Scale: 1:100,000  
CIRCLING

