


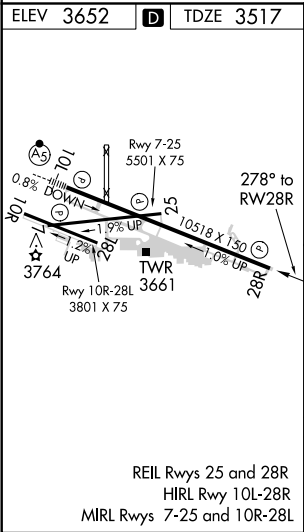
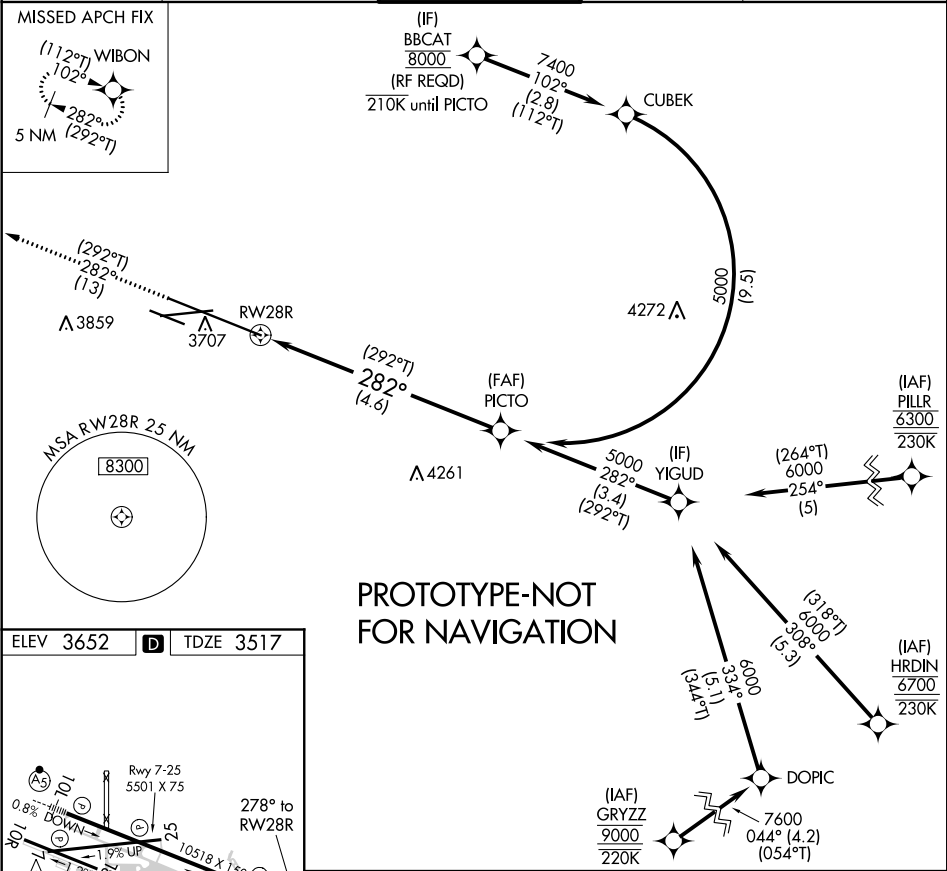
Flight Procedure Tracking Form		Action: FLIGHT CHECK	Task Type: IAP	Date Open: 04/22/2015	Task #: 2015010829447504005	Request #: 20150108294475
Procedure: RNAV (RNP) Z RWY 28R AMDT 1			Airport ID: KBIL	Airport: BILLINGS LOGAN INTL		Reimbursable #: NO
City: BILLIN S	ST: MT	GPS #:	Estimated Chart Date: 12/07/2017			FICO #:
Fac ID: N/A		Fac. Type:			Specialist: VI TOR BOONE	
Procedure Review						
	Rec'd	Rel'd	Full Name		Comments	
Lead:	06/14/2017		J ZEDER 09/18/2017 16			
QA:						
Liaison:						
Procedure Comments:			ENROUTE-NON			
			Remark Type: INFORMATION			
CONTACT JACOB POWERS 405-954-8702						

APP CRS	Rwy Idg	10518
282°	TDZE	3517
	Apt Elev	3652

RNAV (RNP) Z RWY 28R
BILLINGS LOGAN INTL (BIL)

RNP 1.	MISSED APPROACH: Climb to 5900 on track 282° to WIBON and hold.
 For uncompensated Baro-VNAV systems, procedure NA below -24°C (11°F) or above 50°C (123°F). GPS required.	

ATIS 126.3	BILLINGS APP CON 120.5 284.6	BILLINGS TOWER 127.2 257.8	GND CON 121.9	CLNC DEL 121.9
---------------	---------------------------------	-------------------------------	------------------	-------------------



5900 ↑	tr 282°	WIBON 	See planview for multiple IF locations.		
RW28R		PICTO		5000	
				5000	GP 3.00° TCH 56
		4.6 NM			
CATEGORY	A	B	C	D	
RNP 0.30 DA	3903-1¼		386 (300-1¼)		

AUTHORIZATION REQUIRED

BILLINGS, MONTANA

OLD

15120

APP CRS
278°

Rwy Idg **10518**
TDZE **3517**
Apt Elev **3652**

RNAV (RNP) Z RWY 28R

BILLINGS LOGAN INTL (BIL)

GPS required. For uncompensated Baro-VNAV systems, procedure NA below -24°C (11°F) or above 49°C (121°F).

MISSED APPROACH: Climb to 5900 on track 278° to WIBON and hold.

ATIS
126.3

BILLINGS APP CON
120.5 284.6

BILLINGS TOWER
127.2 257.8

GND CON
121.9

CLNC DEL
121.9

MISSED APCH FIX

WIBON



(IF) IGIFE
(RNP 0.40)
(RF REQD)

HYTES
Max 210 KIAS

6300
098° (7.4)

(IAF) KUSTR
(RNP 0.40)
(RF REQD)

5400
226°
(14.8)

3733
3845

3733

RW28R

278°

(2.4)

4300

(1.2)

4300

278°

(1.5)

4600

(1.5)

4900

276°

(3.5)

4272

(3.5)

4900

276°

(3.5)

4272

(3.5)

4900

276°

(3.5)

4272

(3.5)

4900

276°

(3.5)

4272

(3.5)

4900

276°

(3.5)

4272

(3.5)

4900

276°

(3.5)

4272

(3.5)

4900

276°

(3.5)

4272

(3.5)

4900

276°

(3.5)

4272

(3.5)

4900

276°

(3.5)

4272

(3.5)

4900

276°

(3.5)

4272

(3.5)

4900

276°

(3.5)

4272

(3.5)

4900

276°

(3.5)

4272

(3.5)

4900

276°

(3.5)

4272

(3.5)

4900

276°

(3.5)

4272

(3.5)

4900

276°

(3.5)

4272

(3.5)

4900

276°

(3.5)

4272

(3.5)

4900

276°

(3.5)

4272

(3.5)

4900

276°

(3.5)

4272

(3.5)

4900

276°

(3.5)

4272

(3.5)

4900

276°

(3.5)

4272

(3.5)

4900

276°

(3.5)

4272

(3.5)

4900

276°

(3.5)

4272

(3.5)

4900

276°

(3.5)

4272

(3.5)

4900

276°

(3.5)

4272

(3.5)

4900

276°

(3.5)

4272

(3.5)

4900

276°

(3.5)

4272

(3.5)

4900

276°

(3.5)

4272

(3.5)

4900

276°

(3.5)

4272

(3.5)

4900

276°

(3.5)

4272

(3.5)

4900

276°

(3.5)

4272

(3.5)

4900

276°

(3.5)

4272

(3.5)

4900

276°

(3.5)

4272

(3.5)

4900

276°

(3.5)

4272

(3.5)

4900

276°

(3.5)

4272

(3.5)

4900

276°

(3.5)

4272

(3.5)

4900

276°

(3.5)

4272

(3.5)

4900

276°

(3.5)

4272

(3.5)

4900

276°

(3.5)

4272

(3.5)

4900

276°

(3.5)

4272

(3.5)

4900

276°

(3.5)

4272

(3.5)

4900

276°

(3.5)

4272

(3.5)

4900

276°

(3.5)

4272

(3.5)

4900

276°

(3.5)

4272

(3.5)

4900

276°

(3.5)

4272

(3.5)

4900

276°

(3.5)

4272

(3.5)

4900

276°

(3.5)

4272

(3.5)

4900

276°

(3.5)

4272

(3.5)

4900

276°

(3.5)

4272

(3.5)

4900

276°

(3.5)

4272

(3.5)

4900

276°

(3.5)

4272

(3.5)

4900

276°

(3.5)

4272

(3.5)

4900

276°

(3.5)

4272

(3.5)

4900

276°

(3.5)

4272

(3.5)

4900

276°

(3.5)

4272

(3.5)

4900

276°

(3.5)

4272

(3.5)

4900

276°

(3.5)

4272

(3.5)

4900

276°

(3.5)

4272

(3.5)

4900

276°

(3.5)

4272

(3.5)

4900

276°

(3.5)

4272

(3.5)

4900

276°

(3.5)

4272

(3.5)

4900

276°

(3.5)

4272

(3.5)

4900

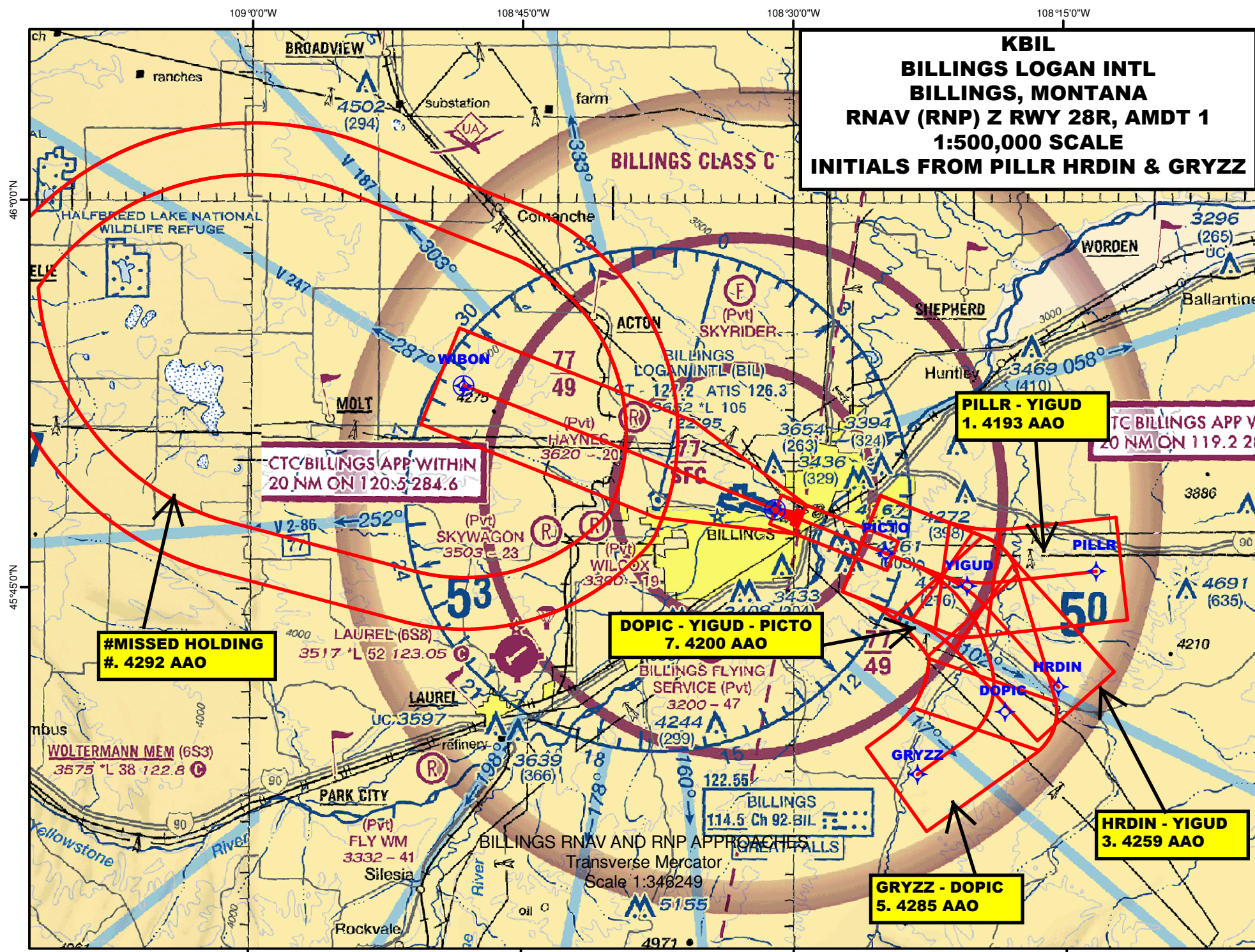
276°

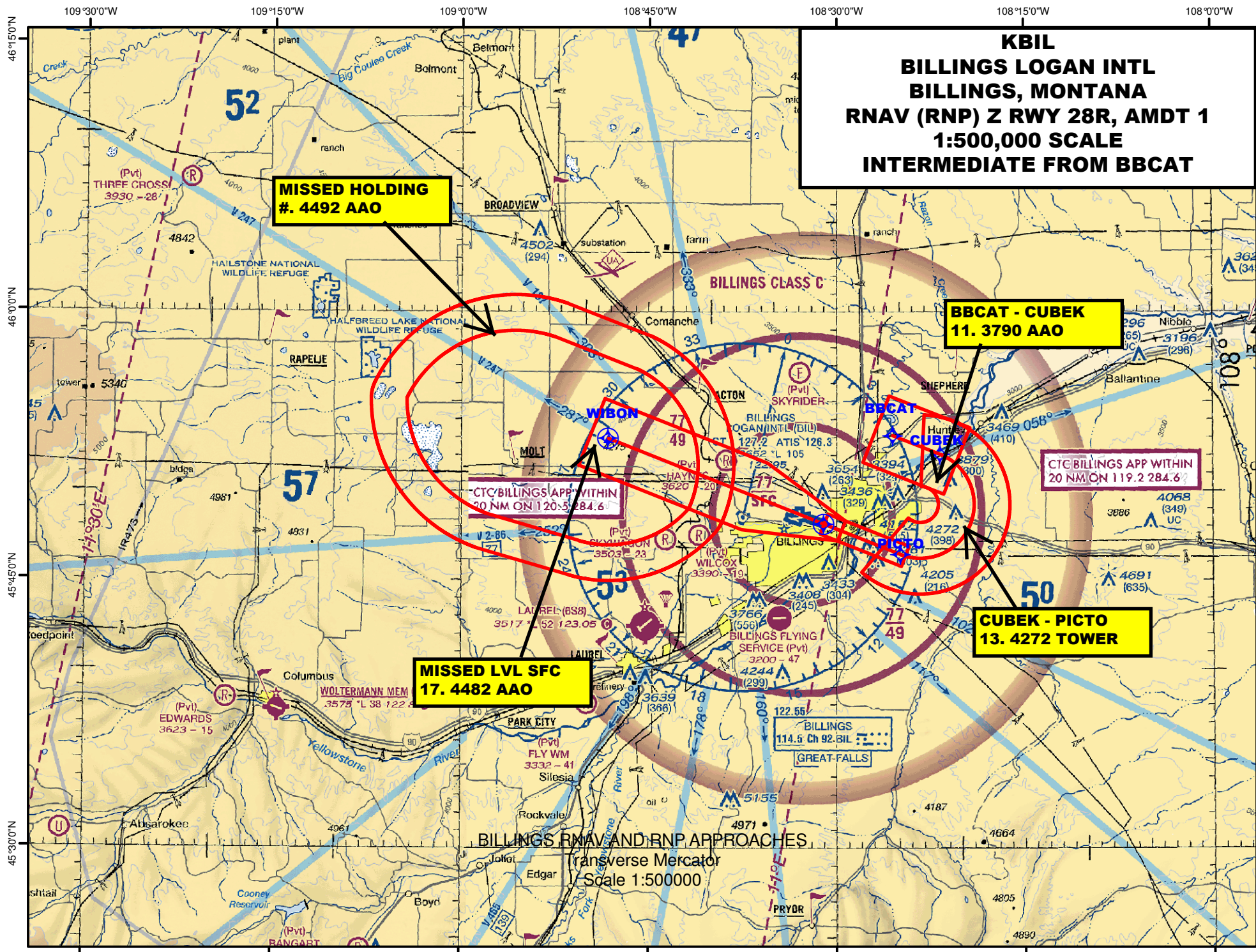
(3.5)

4272

(3.5)

4900





108°30'0"W

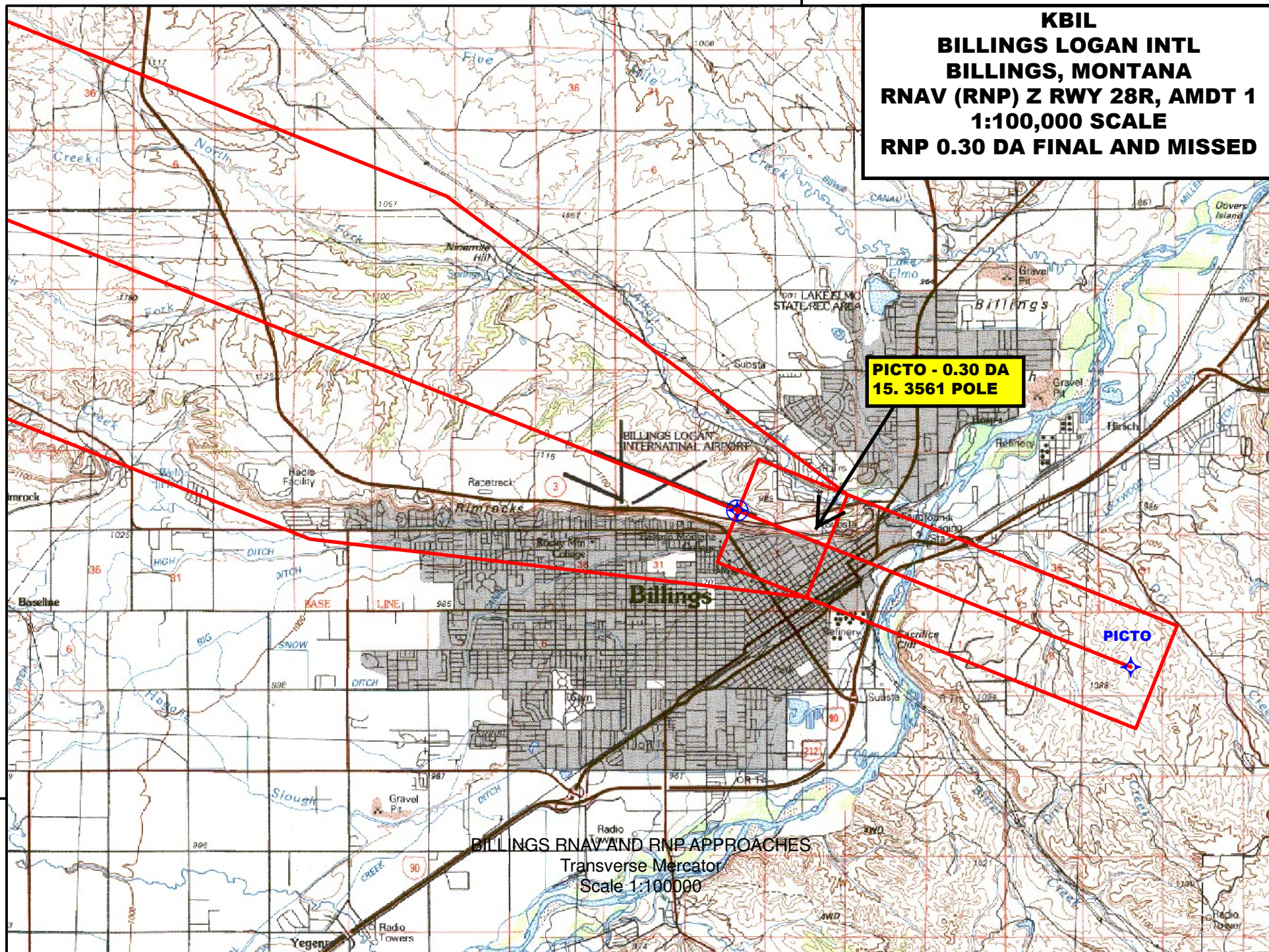
**KBIL
BILLINGS LOGAN INTL
BILLINGS, MONTANA
RNAV (RNP) Z RWY 28R, AMDT 1
1:100,000 SCALE
RNP 0.30 DA FINAL AND MISSED**

**PICTO - 0.30 DA
15. 3561 POLE**

PICTO

BILLINGS RNAV AND RNP APPROACHES
Transverse Mercator
Scale 1:100000

45°45'0"N



TERMINAL AIRSPACE DATA REQUIREMENTS

CITY: BILLINGS

STATE: MT

AIRPORT NAME: BILLINGS LOGAN INTL

ID: KBIL

PROCEDURE: RNAV (RNP) Z RWY 28R

AMDT: 1

DOCKET # :

(96-AXX-X/Required/Not Required)

ALL DIST TO 1/100 NM; ELEV TO NEAREST FT; COORD TO 1/100 SEC; DEG TO 1/100 DG.

- | | | | |
|---|--------------|--------------------------------|-------------|
| 1. Distance from | THLD | to 1000' point | 2.57 |
| <small>(Enter THLD, FAF, ARP, FACILITY, as appropriate)</small> | | | |
| 2. Width of | FINAL | segment at 1000' point | 0.60 |
| <small>(Enter appropriate segment , final, intermediate, etc.)</small> | | | |
| 3. True Course of | FINAL | segment containing 1000' point | 291.81 |
| 4. High Terrain in | FINAL | segment containing 1000' point | 3436 |
| 5. Distance from | THLD | to 1500' point | 6.95 |
| <small>(If 1500' point in PT maneuvering area or holding pattern note in remarks)</small> | | | |
| 6. Width of | INTERMEDIATE | segment at 1500' point | 2.00 |
| 7. True Course of | INTERMEDIATE | segment containing 1500' point | 291.90 |
| 8. High Terrain in | INTERMEDIATE | segment containing 1500' point | 4000 |
| 9. Threshold Coordinates (if straight-in) ... | 454807.39N | / | 1083059.44W |
| 10. ARP Coordinates | 454827.58N | / | 1083234.35W |
| 11. Runway Approach End and distance furthest from ARP..... | RWY | R28R | |
| | Distance | 1.16 | NM |
| 12. FAF Coordinates | 454625.67N | / | 1082455.39W |
| <small>(Click to Select)</small> | | | |

REMARKS: