

FEDERAL AVIATION ADMINISTRATION  
FLIGHT STANDARDS SERVICE  
STANDARD TERMINAL ARRIVAL (STAR)

Bearings, headings, courses, tracks and radials are magnetic. Elevations and altitudes are in feet, MSL. Altitudes are minimum altitudes unless otherwise indicated.  
Distances are in nautical miles (NM). Graphic depictions attached.

Arrival Name	Number	STAR Computer Code	Superseded Number	Dated	Effective Date
YLSTN (RNAV)	TWO	YLSTN.YLSTN2	ONE	04/30/2015	

TRANSITION ROUTES:

Transition Name	Transition Computer Codes	From FIX/NAVAID	To FIX/NAVAID	Mag Course	Distance	MEA	MOCA	MAA	Crossing Altitudes / Fixes
JEKUG	JEKUG.YLSTN2	JEKUG	JEKUG						AT/ABOVE 15000
			YLSTN	016.77	54.67	14500			AT/ABOVE 15000

ARRIVAL ROUTE DESCRIPTION:

FROM YLSTN ON TRACK 017.23/24.80 TO CROSS GRYNT AT OR ABOVE 11000 AND AT OR BELOW 250 KIAS.

LANDING RWY 10L: FROM GRYNT ON TRACK 347.77/22.28 TO CROSS BEARE AT 8000 AND AT OR BELOW 210 KIAS. EXPECT RNAV (GPS) RWY 10L OR RADAR VECTORS TO ASSIGNED APPROACH.

LANDING RWY 28R: FROM GRYNT ON TRACK 058.36/23.87 TO CROSS GRYZZ AT 9000 AND AT OR BELOW 220 KIAS, THEN ON HEADING 030.00. EXPECT RNAV/RNP RWY 28R APPROACH OR RADAR VECTORS TO FINAL APPROACH COURSE.

PROCEDURAL DATA NOTES:

NOTE: RADAR REQUIRED

NOTE: RNAV 1

NOTE: GPS REQUIRED

FIXES AND/OR HOLDING PATTERNS:

CHART HOLDING AT YLSTN, HOLD S, RT, 016.77 INBOUND, 10 NM LEGS. CHART BIL VORTAC.

COMMUNICATIONS:

ATIS, APP CON, TWR, GND CON

AIRPORTS SERVED:

BILLINGS LOGAN INTL, (KBIL) BILLINGS, MT

LOST COMMUNICATIONS PROCEDURE:

REMARKS:

ADDITIONAL FLIGHT DATA:

DME/DME ASSESSMENT: UNSAT.

REFERENCE MAGNETIC VARIATION = KBIL 10E/2020.

FEDERAL AVIATION ADMINISTRATION  
FLIGHT STANDARDS SERVICE  
STANDARD TERMINAL ARRIVAL (STAR)

Bearings, headings, courses, tracks and radials are magnetic. Elevations and altitudes are in feet, MSL. Altitudes are minimum altitudes unless otherwise indicated.  
Distances are in nautical miles (NM). Graphic depictions attached.

Arrival Name	Number	STAR Computer Code	Superseded Number	Dated	Effective Date
<b>YLSN (RNAV)</b>	<b>TWO</b>	<b>YLSN.YLSN2</b>	<b>ONE</b>	<b>04/30/2015</b>	
<u>FLIGHT INSPECTED BY:</u>			<i>Digitally signed by</i> <b>JOHNNIE BAKER</b>		
GARY J VEER	FICO	9/8/17	<div style="display: flex; justify-content: space-between;"> <span>Oct 13, 2017</span> <span>Signature</span> </div> <i>Digitally signed by</i> <b>JOHNNIE BAKER</b> <div style="display: flex; justify-content: space-between;"> <span>Oct 13, 2017</span> <span>Signature</span> </div>		
Name	Organization	Date			
<u>DEVELOPED BY:</u>					
Rodney Sabino, Support Manager	Salt Lake ARTCC	04/25/17	<div style="display: flex; justify-content: space-between;"> <span>Oct 13, 2017</span> <span>Signature</span> </div> <i>Digitally signed by</i> <b>JOHNNIE BAKER</b> <div style="display: flex; justify-content: space-between;"> <span>Oct 13, 2017</span> <span>Signature</span> </div>		
Name	Organization	Date			
<u>APPROVED BY:</u>					
MARLON J. ROBINSON, MANAGER	AJV-5440		<div style="display: flex; justify-content: space-between;"> <span>Oct 13, 2017</span> <span>Signature</span> </div>		
Name	Organization	Date			

CHANGES:

1. MEAS REMOVED FROM COMMON ROUTE AND RUNWAY TRANSITIONS.
2. UPDATED MAGVAR FROM 14E TO 10E/2020. ALL COURSE HEADINGS INCREASED FOUR DEGREES.
3. ADDED SPEED RESTRICTION OF AT/BELOW 250 KIAS AT GRYNT.
4. UKACO REMOVED FROM PROCEDURE.
5. BEARE MOVED 3.76 NM WEST AND RESTRICTIONS CHANGED FROM AT 6600 AND AT 210 KIAS TO AT 8000 AND AT/BELOW 210 KIAS.
6. RWY 28R TRANSITION: UKACO WAS REPLACED WITH GRYZZ AS TERMINUS WITH RESTRICTIONS OF AT 9000 AND AT/BELOW 220 KIAS.
7. REMOVED VM LEG FROM END OF RWY 10L TRANSITION.
8. RWY 28R TRANSITION: CHANGED VM LEG HEADING FROM 303 TO 030.

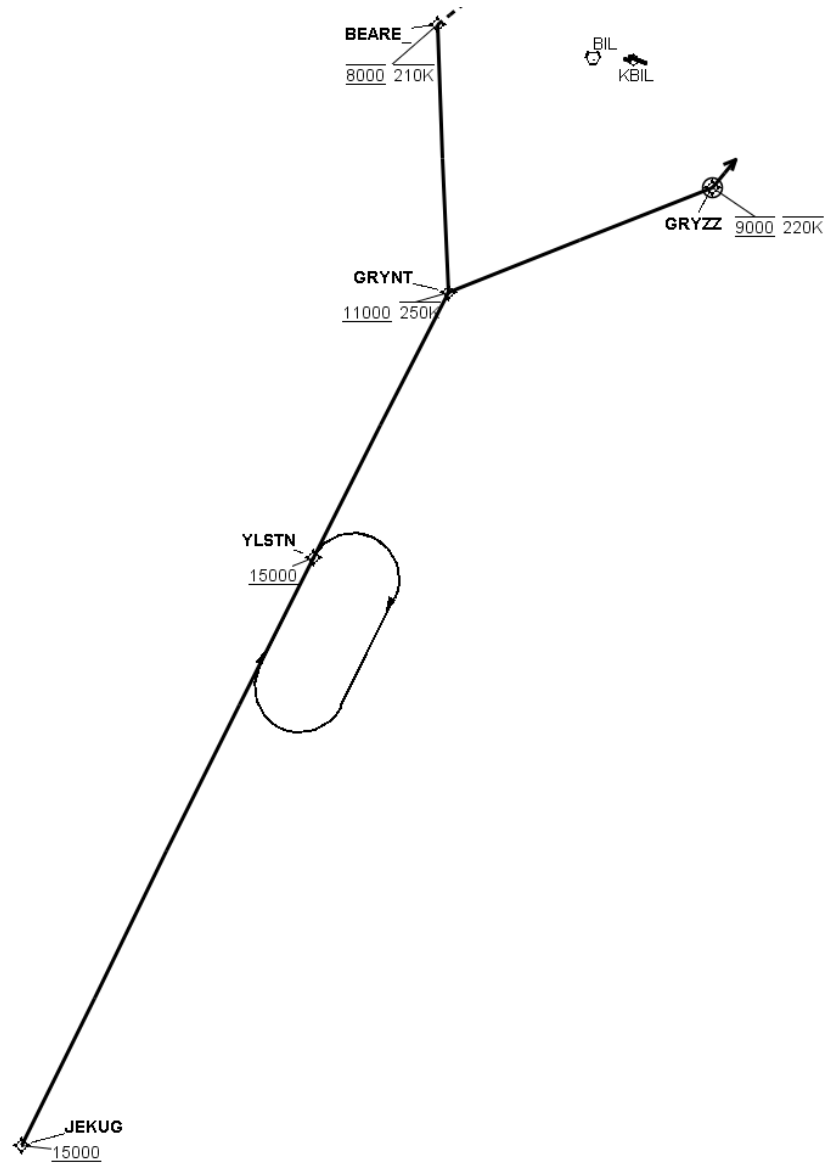
REASONS:

1. IAW 8260.3C.
2. REQUIRED TO MEET CRITERIA.
3. ATC REQUEST: CONTROLS COMPRESSION FOR ARRIVAL SEQUENCING.
- 4, 7. ATC REQUEST: NO LONGER NEEDED.
5. NEEDED TO MATCH CONNECTING FIX RESTRICTIONS ON RNAV (GPS) RWY 10L IAP.
6. NEEDED TO MATCH CONNECTING FIX RESTRICTIONS ON RNAV 28R IAP'S.
8. ATC REQUEST: POSITIONS AIRCRAFT FOR RADAR VECTORS TO FINAL.

FEDERAL AVIATION ADMINISTRATION  
FLIGHT STANDARDS SERVICE  
STANDARD TERMINAL ARRIVAL (STAR)

Bearings, headings, courses, tracks and radials are magnetic. Elevations and altitudes are in feet, MSL. Altitudes are minimum altitudes unless otherwise indicated.  
Distances are in nautical miles (NM). Graphic depictions attached.

Arrival Name	Number	STAR Computer Code	Superseded Number	Dated	Effective Date
YLSN (RNAV)	TWO	YLSN.YLSN2	ONE	04/30/2015	
Graphic Depiction 4					



FEDERAL AVIATION ADMINISTRATION  
FLIGHT STANDARDS SERVICE  
STAR (DATA RECORD)

Arrival Name YLSTN (RNAV)		Number TWO		STAR Computer Code YLSTN.YLSTN2		Superseded Number ONE		Dated 04/30/2015		Effective Date	
FIX/NAVAID		LAT/LONG		C	FO/FB	LEG TYPE	TC	DIST (NM)	ALTITUDE	SPEED	REMARKS
En Route Transition											
JEKUG		441822.44N / 1094543.17W		Y		IF			AT/ABOVE 15000		JEKUG.YLSTN2
YLSTN		450705.75N / 1091056.33W		Y	FB	TF	026.77	54.67	AT/ABOVE 15000		
Common Route											
YLSTN		450705.75N / 1091056.33W		Y		IF			AT/ABOVE 15000		YLSTN.YLSTN2
GRYNT		452907.34N / 1085448.51W		Y	FB	TF	027.23	24.80	AT/ABOVE 11000	AT/BELOW 250K	
Runway Transition											
GRYNT		452907.34N / 1085448.51W		Y		IF			AT/ABOVE 11000	AT/BELOW 250K	
BEARE		455122.64N / 1085603.02W		Y	FB	TF	357.77	22.28	AT 8000	AT/BELOW 210K	
KBIL:RWY 10L											
Runway Transition											
GRYNT		452907.34N / 1085448.51W		Y		IF			AT/ABOVE 11000	AT/BELOW 250K	
GRYZZ		453751.19N / 1082311.06W		Y	FO	TF	068.36	23.87	AT 9000	AT/BELOW 220K	
KBIL:RWY 28R						VM	040.00				