

<b>Flight Procedure Tracking Form</b>		<b>Action:</b> AMENDMENT	<b>Task Type:</b> TEXTUAL DP	<b>Date Open:</b> 12/29/2014	<b>Task #:</b> 2014122929774301001	<b>Request #:</b> 20141229297743
<b>Procedure:</b> GREAT FALLS MT KGTF AMDT 1			<b>Airport ID:</b> KGTF	<b>Airport:</b> GREAT FALLS INTL		<b>Reimbursable #:</b> YES
<b>City:</b> GREAT FALLS	<b>ST:</b> MT	<b>GPS #:</b>	<b>Estimated Chart Date:</b> 08/17/2017		<b>FICO #:</b>	
<b>Fac ID:</b> N/A		<b>Fac. Type:</b>			<b>Specialist:</b> DEANNA FIELDS	
<b>Procedure Review</b>						
	<b>Rec'd</b>	<b>Rel'd</b>	<b>Full Name</b>	<b>Comments</b>		
<b>Lead:</b>	01/17/2017					
<b>QA:</b>						
<b>Liaison:</b>						
<b>Procedure Comments:</b>			ENROUTE-NON	<b>Remark Type:</b> INFORMATION		
<p>ASSIGNED MAG VAR, KGTF OLD 16E-NEW 13E.</p> <p>CONTACT: JACOB POWERS, SUB-TEAM MANAGER, IFP TEAM 3, 405.954.8702 (OR)  PATRICK MULQUEEN, MANAGER, AJV-543, INSTRUMENT FLIGHT PROCEDURES TEAM 3, 405.954.4073.</p>						



# TAKEOFF MINIMUMS, (OBSTACLE) DEPARTURE PROCEDURES, AND DIVERSE VECTOR AREA (RADAR VECTORS)



## GLASGOW, MT

WOKAL FIELD/GLASGOW INTL (GGW)  
TAKEOFF MINIMUMS AND (OBSTACLE)  
DEPARTURE PROCEDURES  
ORIG 11349 (FAA)

NOTE: **Rwy 30**, terrain 6' from DER, 500' right of centerline 2291' MSL.

## GLENDIVE, MT

DAWSON COMMUNITY (GDV)  
TAKEOFF MINIMUMS AND (OBSTACLE)  
DEPARTURE PROCEDURES  
ORIG 11237 (FAA)

NOTE: **Rwy 12**, light support structure beginning 8' from DER, left and right of centerline, up to 15' AGL/2456' MSL. Vehicle on road 514' from DER, 555' left of centerline, 56' AGL/2468' MSL. Windsock 6' from DER, 301' left of centerline, 29' AGL/2464' MSL.

**Rwy 20**, vehicle on road beginning 367' from DER, left and right of centerline, up to 36' AGL/2471' MSL.

**Rwy 30**, trees beginning 311' from DER, 511' left of centerline, up to 10' AGL/2487' MSL. Light support structures beginning 8' from DER, left and right of centerline, up to 9' AGL/2460' MSL. Fence beginning 193' from DER, left and right of centerline, up to 34' AGL/2468' MSL. Sign 27' from DER, 200' left of centerline, 9' AGL/2460' MSL. Vehicle on road beginning 298' from DER, left and right of centerline, up to 26' AGL/2477' MSL. Vehicle on road beginning 427' from DER, 145' left of centerline, up to 26' AGL/2477' MSL. Post 428' from DER, 241' left of centerline, 23' AGL/2474' MSL.

## GOODING, ID

GOODING MUNI (GNG)  
TAKEOFF MINIMUMS AND (OBSTACLE)  
DEPARTURE PROCEDURES  
ORIG 08269 (FAA)

DEPARTURE PROCEDURE: **Rwy 7**, climb heading 068° to 5000 before turning left. **Rwy 25**, climb heading 233° to 5600 before turning right.

NOTE: **Rwy 7**, rising terrain 59' from DER, 479' right of centerline, up to 3754' MSL. Fence line 653' from DER, 332' right of centerline, 12' AGL up to 3751' MSL. Bushes starting 877' from DER, 420' right of centerline, 20' AGL up to 3795' MSL. **Rwy 25**, vehicle on road, 91' from DER, 257' left of centerline, up to 10' AGL/3678' MSL.

## GRANGEVILLE, ID

IDAHO COUNTY (GIC)  
TAKEOFF MINIMUMS AND (OBSTACLE)  
DEPARTURE PROCEDURES  
ORIG 16315 (FAA)  
TAKEOFF MINIMUMS: **Rwy 8**, NA - Obstacles.  
DEPARTURE PROCEDURE: **Rwy 26**, Use MELLR DEPARTURE.

## GRANTS PASS, OR

GRANTS PASS (3S8)  
TAKEOFF MINIMUMS AND (OBSTACLE)  
DEPARTURE PROCEDURES  
AMDT 1 12208 (FAA)  
TAKEOFF MINIMUMS: **Rwy 13**, NA - terrain. **Rwy 31**, std. w/min. climb of 466' per NM to 4400.  
DEPARTURE PROCEDURE: **Rwy 31**, climb heading 320° and RBG R-169 to RBG VOR/DME before proceeding on course.  
NOTE: **Rwy 31**, trees beginning 188' from DER, 281' left of centerline, up to 100' AGL/1194' MSL. Trees beginning 93' from DER, 283' right of centerline, up to 100' AGL/1194' MSL.

## GRAY AAF (KGRF),

JOINT BASE  
LEWIS MCCORD, WA  
TAKEOFF MINIMUMS AND (OBSTACLE)  
DEPARTURE PROCEDURES  
AMDT 3, 14009  
**Rwy 15**, Standard  
**Rwy 33**, 300-1\*  
\* Or standard with a minimum climb of 469/NM to 600.  
(Not for Civil Use).  
DEPARTURE PROCEDURE: **Rwy 15**, Climbing left turn direct GRF NDB, thence.... **Rwy 33**, Climb direct GRF NDB, thence....  
.... Aircraft departing 330° CW 065° and 134° CW 265° bearing from GRF NDB climb on course. All others continue climb in GRF NDB holding pattern (Hold NW, RT, 151° inbound) to cross GRF NDB at or above: 065° CW 134° bearing from GRF NDB, 8700; 265° CW 330° bearing from GRF NDB, 1500(ADF REQUIRED).  
TAKE-OFF OBSTACLES: **Rwy 15**, Trees 100' AGL/439' MSL, 1823' from DER, 750' right of centerline. **Rwy 33**, Trees 100' AGL/479' MSL, 2482' from DER, 1163' left of centerline.

## GREAT FALLS, MT

GREAT FALLS INTL (GTF)  
TAKEOFF MINIMUMS AND (OBSTACLE)  
DEPARTURE PROCEDURES  
ORIG 07018 (FAA)  
NOTE: **Rwy 7**, obstruction light on lighted wind sock 237' from DER, 519' left of centerline, 34' AGL/3694' MSL. Obstruction light on building 2226' from DER, 614' left of centerline, 78' AGL/3738' MSL. Building on 681' from DER, 583' right of centerline, 48' AGL/3688' MSL. Multiple light poles beginning 1359' from DER, 440' right of centerline, up to 90' AGL/3746' MSL. **Rwy 21**, pole 1544' from DER, 791' left of centerline, 45' AGL/3725' MSL. **Rwy 25**, windmill 2.3 NM from DER, 4197' right of centerline, 338' AGL/4003' MSL.

OLD

30 MAR 2017 to 27 APR 2017

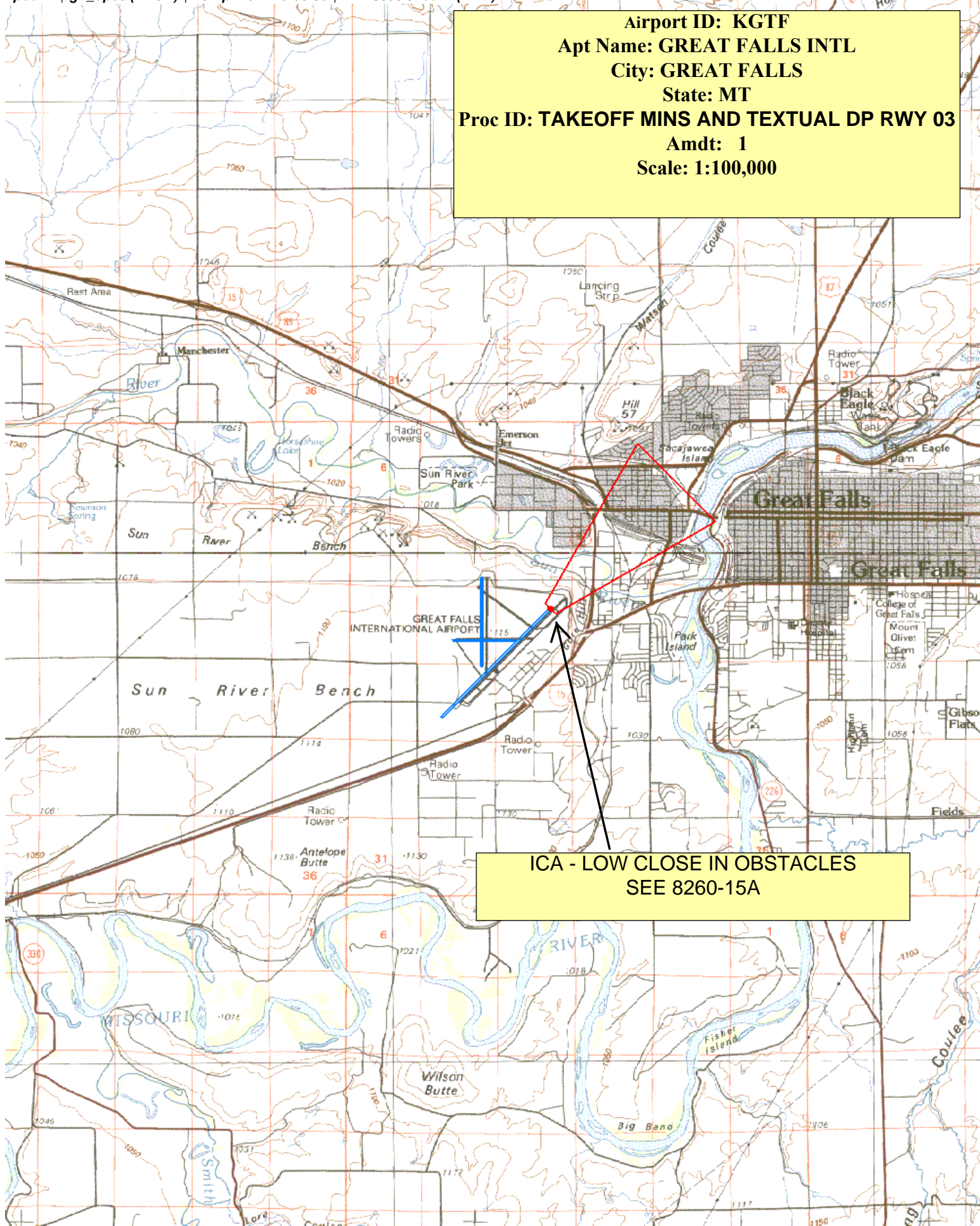
MAR 2017 to 27 APR 2017



NM 1 2 3 4 5 6 7 8 9 10  
FT 8000 16000 24000 32000 40000 48000 56000 64000

fpodmf | gtf\_dp03 (PROD) | 13 Apr 2017 15:08:30 | 1" = 8333.3 feet (MAP)

**Airport ID: KGTF**  
**Apt Name: GREAT FALLS INTL**  
**City: GREAT FALLS**  
**State: MT**  
**Proc ID: TAKEOFF MINS AND TEXTUAL DP RWY 03**  
**Amdt: 1**  
**Scale: 1:100,000**





NM 12 24 36 48 60 72 84

FT 72000 144000 216000  
fpodmf | gtf\_dp03 (PROD) | 13 Apr 2017 15:05:39 | 1" = 72000.0 feet (ft)

## DIVERSE A AND B: ASC

Airport ID: KGTF

Apt Name: GREAT FALLS INTL

City: GREAT FALLS

State: MT

Proc ID: TAKEOFF MINS AND TEXTUAL DP RWY 03

Amdt: 1

Scale: 1:500,000





NM 1 2 3 4 5 6 7 8 9 10 11 12 13 14

FT 8000 16000 24000 32000 40000 48000

fpodmf | gtf\_dp17x (PROD) | 13 Apr 2017 14:48:21 | 1" = 8333.3 feet (MAP)

**Airport ID: KGTF**  
**Apt Name: GREAT FALLS INTL**  
**City: GREAT FALLS**  
**State: MT**  
**Proc ID: TAKEOFF MINS AND TEXTUAL DP RWY 17**  
**Amdt: 1**  
**Scale: 1:100,000**

Great Falls International Airport (KGTF) is located on the Sun River Bench. The map shows the Sun River, Sun River Bench, and Great Falls city. The airport is highlighted with a red triangle and blue lines indicating runways. A yellow box contains airport information. A yellow callout box points to the airport with the text "ICA - LOW CLOSE IN OBSTACLES SEE 8260-15A".

ICA - LOW CLOSE IN OBSTACLES  
SEE 8260-15A



NM 12 24 36  
FT 70000 140000 210000  
fpodmf | gtf\_dp17x (PROD) | 13 Apr 2017 14:41:51 | 1" = 70000.0 feet

## DIVERSE A AND B: ASC

Airport ID: KGTF

Apt Name: GREAT FALLS INTL

City: GREAT FALLS

State: MT

Proc ID: TAKEOFF MINS AND TEXTUAL DP RWY 17

Amdt: 1

Scale: 1:500,000

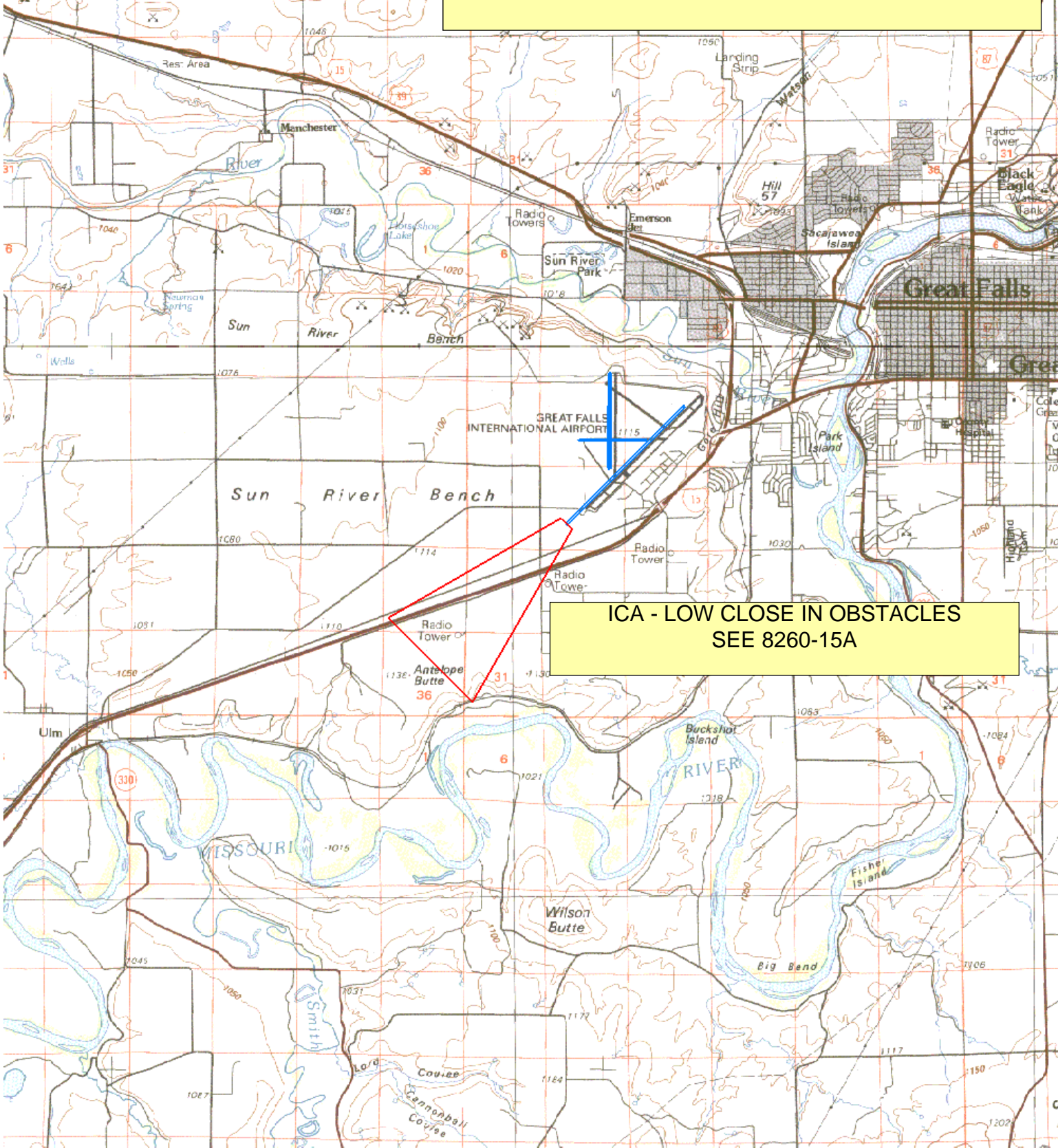




NM 1 2 3 4 5 6 7 8 9 10  
FT 8000 16000 24000 32000 40000 48000 56000 64000

fpodmf | gtf\_dp21 (PROD) | 13 Apr 2017 15:38:32 | 1" = 8333.3

**Airport ID: KGTF**  
**Apt Name: GREAT FALLS INTL**  
**City: GREAT FALLS**  
**State: MT**  
**Proc ID: TAKEOFF MINS AND TEXTUAL DP RWY 21**  
**Amdt: 1**  
**Scale: 1:100,000**





fpodmf | gtf\_dp21 (PROD) | 13 Apr 2017 15:36:00 | 1" = 72000.0 feet

**Airport ID: KGTF**  
**Apt Name: GREAT FALLS INTL**  
**City: GREAT FALLS**  
**State: MT**  
**Proc ID: TAKEOFF MINS AND TEXTUAL DP RWY 21**  
**Amdt: 1**  
**Scale: 1:500,000**

## DIVERSE A AND B: ASC

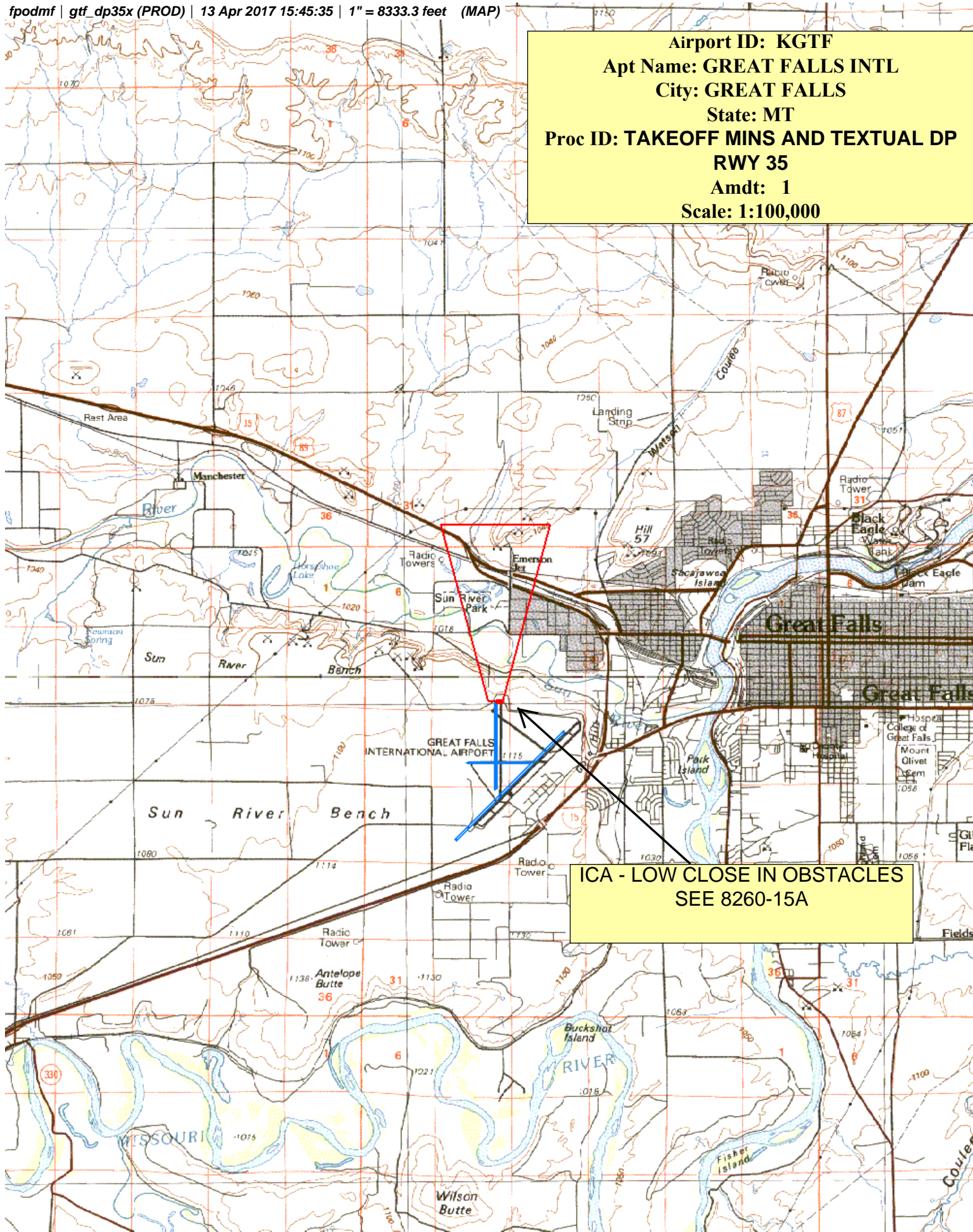




NM 1 2 3 4 5 6 7 8 9 10  
FT 8000 16000 24000 32000 40000 48000 56000 64000

fpodmf | gtf\_dp35x (PROD) | 13 Apr 2017 15:45:35 | 1" = 8333.3 feet (MAP)

**Airport ID: KGTF**  
**Apt Name: GREAT FALLS INTL**  
**City: GREAT FALLS**  
**State: MT**  
**Proc ID: TAKEOFF MINS AND TEXTUAL DP**  
**RWY 35**  
**Amdt: 1**  
**Scale: 1:100,000**





**Airport ID: KGTF**  
**Apt Name: GREAT FALLS INTL**  
**City: GREAT FALLS**  
**State: MT**  
**Proc ID: TAKEOFF MINS AND TEXTUAL DP RWY 35**  
**Amdt: 1**  
**Scale: 1:500,000**

**DIVERSE A AND B: ASC**





**DEPARTMENT OF TRANSPORTATION  
FEDERAL AVIATION ADMINISTRATION  
CATEGORICAL EXCLUSION DECLARATION**

**Great Falls International Airport**

**RNAV (GPS) RUNWAY 17  
RNAV (GPS) RUNWAY 35  
AMENDMENTS TO PUBLISHED PROCEDURES**

**Description of Action:**

The FAA is proposing to develop Wide Area Augmentation System (WAAS) capable Area Navigation (RNAV) procedures to the newly reconstructed Runway (RWY) 17 and RWY 35 at Great Falls International Airport (KGTF), Great Falls, Montana. As a result, all procedures, listed below, require updates for Airport Magnetic Variation (MagVar) and for circling criteria:

- High Altitude (HI)-Instrument Landing System (ILS) or Localizer (LOC)/Distance Measuring Equipment (DME) RWY 03 ILS or LOC/DME RWY 03
- ILS RWY 03 (SA Category [CAT] I)
- ILS RWY 03 (CAT II – III)
- RNAV (Required Navigation Performance [RNP]) Z RWY 03
- RNAV (RNP) Z RWY 21
- RNAV (Global Positioning System [GPS]) Y RWY 03
- RNAV (GPS) Y RWY 21
- Very High Frequency Omnidirectional Range (VOR)/DME RWY 03
- HI-VOR/DME or Tactical Air Navigation Aid (TACAN) RWY 03
- HI-VOR/DME or TACAN RWY 21
- VOR RWY 21
- Textual (Obstacle) Departure Procedures

Implementation of the proposed new procedures to RWY 17/35 (crosswind runway) will allow users to use the crosswind runways in instrument meteorological conditions or favorable wind conditions.

**Declaration of Exclusion:**

The FAA has reviewed the above referenced proposed action and it has been determined, by the undersigned, to be categorically excluded from further environmental documentation according to

CATEX MEMO – KGTF – Original RNAV (GPS) RUNWAY 17 and RNAV (GPS) RUNWAY 35; Amendments to Published Procedures

20161206



FAA Order 1050.1F, "Environmental Impacts: Policies and Procedures." The implementation of this action will not result in any extraordinary circumstances in accordance with FAA Order 1050.1F.

**Basis for this Determination:**

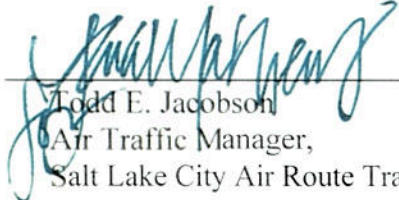
The Aircraft Procedure request Environmental Pre-Screening Filter was processed and reviewed by the Western Service Center. This review was conducted in accordance with policies and procedures in Department of Transportation Order 5610.1C, "Procedures for Considering Environmental Impacts" and FAA Order 1050.1F.

The proposed original procedures meet the following categorical exclusion contained in FAA Order 1050.1F:

***5-6.5.p. - Establishment of new procedures that routinely route aircraft over non-noise sensitive areas.***

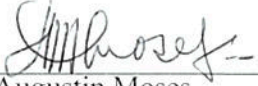


**Facility Manager Review/Concurrence**

Signature:  Date: 12/12/16  
Name: Todd E. Jacobson  
Air Traffic Manager,  
Salt Lake City Air Route Traffic Control Center

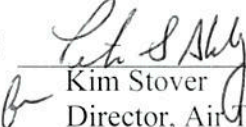
**Concurrence by:**

**Western Service Area Environmental Specialist**

Signature:  Date: 12/12/2016  
Name: Augustin Moses  
Environmental Specialist, Operations Support Group  
Western Service Area, AJV-W22

**Approval by:**

**Western Service Area Director or Designee Approval**

Signature:  Date: 12/13/16  
Name: Kim Stover  
Director, Air Traffic Operations, North,  
Western Service Area, AJTWN



## Aircraft Procedure Environmental Pre-Screening Filter Form

**Form Instructions** - The following aircraft procedures are major federal actions under the National Environmental Policy Act (NEPA): new instrument approach, departure, and en route procedures, and updates to currently approved aircraft procedures. This requires the FAA to undertake an environmental review of the proposed new or updated procedures. In some circumstances, the FAA can determine that the proposed action is the type that qualifies for a Categorical Exclusion (CATEX) and thus does not require preparation of an environmental assessment (EA) or environmental impact statement (EIS). In order to assist the FAA in making that determination, please complete the following form. All items on the form must be addressed.

This form is designed to expand and ask additional questions based on your responses. **Once the form is complete, please save the file as a PDF and email it as well as any additional requested attachments (such as a FAA facility third party concurrence or an electronic satellite or land use map) to the FAA specialist who is coordinating your procedure request.** Adobe Reader's Auto Complete feature may interfere with easily filling out this form. Please hover your mouse [here](#) for instructions on how to turn it off.

### Proponent Information

Request ID	17-009	Title	Mr.
First Name	Augustin	Middle Initial	A
		Last Name	Moses
Company/Facility	FAA		
Street Address	1601 Lind Ave. SW	City	Renton
State/US Territory	Washington	Zip Code	98057
Phone Number	(425) 203-4536	Email	augustin.moses@faa.gov

### Procedure Location

☐ Procedure Location and Proponent Address are the same

Street Address	2800 Terminal Drive	City	Great Falls
State/US Territory	Montana	Zip Code	59404-5599
		Location ID	KGTF

### Procedure Details

#### Please describe the requested procedure

The FAA is proposing Wide Area Augmentation System capable Area Navigation (RNAV) procedures to the newly reconstructed Runway (RWY) 17 and RWY 35 in Great Falls International Airport (KGTF), Great Falls, Montana:

Update Magnetic Variation (MAGVAR) and update circling to current criteria for all procedures. Operationally, the new procedures to RWY 17/35 will allow users to use the crosswind runways in instrument meteorological conditions or favorable wind conditions.

#### Textual Procedures

High (HI)-Instrument Landing System (ILS) or Localizer (LOC)/Distance Measuring Equipment (DME) RWY 03

ILS or LOC/DME RWY 03

ILS RWY 03 (SA CAT I)

ILS RWY 03 (SA CAT II/III)

RNAV (RNP) Z RWY 03

RNAV (GPS) Y RWY 03

RNAV (RNP) Z RWY 21

RNAV (GPS) Y RWY 21

Very High Frequency Omni directional Range (VOR)/DME RWY 03

HI-VOR/DME or TACAN RWY 03

VOR RWY 21

HI-VOR/DME or TACAN RWY 21

Was the procedure request developed by a third party?

☐ Yes

☒ No

Select procedure type

☒ New Procedure

☐ Change of an Existing Procedure



Reserved for existing procedure request information

Minimum Altitude of Procedure Request

Enter Number of Procedures

Approaches/Arrivals  Enroute  Departures

Is This a Helicopter Only Request? ☐ Yes ☒ No

Does the Procedure Request Direct Aircraft Over One or More of the Following Areas:

Residential	Educational	Health	Religious Structures or Sites
Recreational	Cultural	Historic Sites	Parks, Not National
Wilderness Area, Not National	Wildlife Refuge, Not National		

**Note: Electronic Satellite (such as Google) or Land Use Map must be attached as a part of this submission.**

☐ Yes ☒ No

Does the Procedure Request Direct Aircraft Over One or More of the Following Areas:

National Parks	National Wilderness Area	National Wildlife Refuge
----------------	--------------------------	--------------------------

**Note: Electronic Satellite (such as Google) or Land Use Map must be attached as a part of this submission.**

☐ Yes ☒ No

☒ The information provided is complete and up to date at the time of submission.



# Federal Aviation Administration Categorical Exclusion Declaration

Date 12/6/16

First Name  Middle Initial  Last Name   
Title  Company/Facility

## Procedure Request Description:

The FAA is proposing Wide Area Augmentation System capable Area Navigation (RNAV) procedures to the newly reconstructed Runway (RWY) 17 and RWY 35 in Great Falls International Airport (KGTF), Great Falls, Montana:

Update Magnetic Variation (MAGVAR) and update circling to current criteria for all procedures. Operationally, the new procedures to RWY 17/35 will allow users to use the crosswind runways in instrument meteorological conditions or favorable wind conditions.

Textual Procedures  
High (HI)-Instrument Landing System (ILS) or Localizer (LOC)/Distance Measuring Equipment (DME) RWY 03  
ILS or LOC/DME RWY 03  
ILS RWY 03 (SA CAT I)  
ILS RWY 03 (SA CAT II/III)

**Declaration of Exclusion:** The FAA has reviewed the above referenced proposed action and it has been determined, by the undersigned, to be categorically excluded from further environmental documentation according to FAA Order 1050.1, "Environmental Impacts: Policies and Procedures." The implementation of this action will not result in any extraordinary circumstances in accordance with FAA Order 1050.1.

**Basis for this Determination:** This review was conducted in accordance with policies and procedures in Department of Transportation Order 5610.1, "Procedures for Considering Environmental Impacts" and FAA Order 1050.1.

The applicable categorical exclusions is/are:

5-6.5 p - Establishment of new procedures that routinely route aircraft over non-noise sensitive areas.

Concurrence/Reviewed By:  Date

Title:

The above flight procedure has been developed within the accepted parameters.

Concurrence/Reviewed By:  Date

Title:

Approved By:

Date

Title:

Save Form