


Flight Procedure Tracking Form		Action: CANCELLATION	Task Type: IAP	Date Open: 07/18/2016	Task #: 2014122929673401011	Request #: 20141229296734
Procedure: NDB RWY 34 AMDT 16C			Airport ID: KGTF	Airport: GREAT FALLS INTL	Reimbursable #: YES	
City: GREAT FALLS	ST: MT	GPS #:	Estimated Chart Date: 08/17/2017		FICO #:	
Fac ID: ITU		Fac. Type: NDB			Specialist: DEANNA FIELDS	
Procedure Review						
	Rec'd	Rel'd	Full Name	Comments		
Lead:	01/17/2017					
QA:						
Liaison:						
Procedure Comments:		ENROUTE-NON		Remark Type: INFORMATION		
<p>CONTACT: JACOB POWERS, SUB-TEAM MANAGER, IFP TEAM 3, 405.954.8702 (OR) PATRICK MULQUEEN, MANAGER, AJV-543, INSTRUMENT FLIGHT PROCEDURES TEAM 3, 405.954.4073.</p>						

CANCEL

GREAT FALLS, MONTANA

AL-177 (FAA)

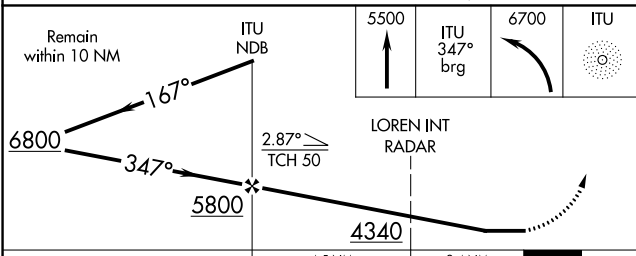
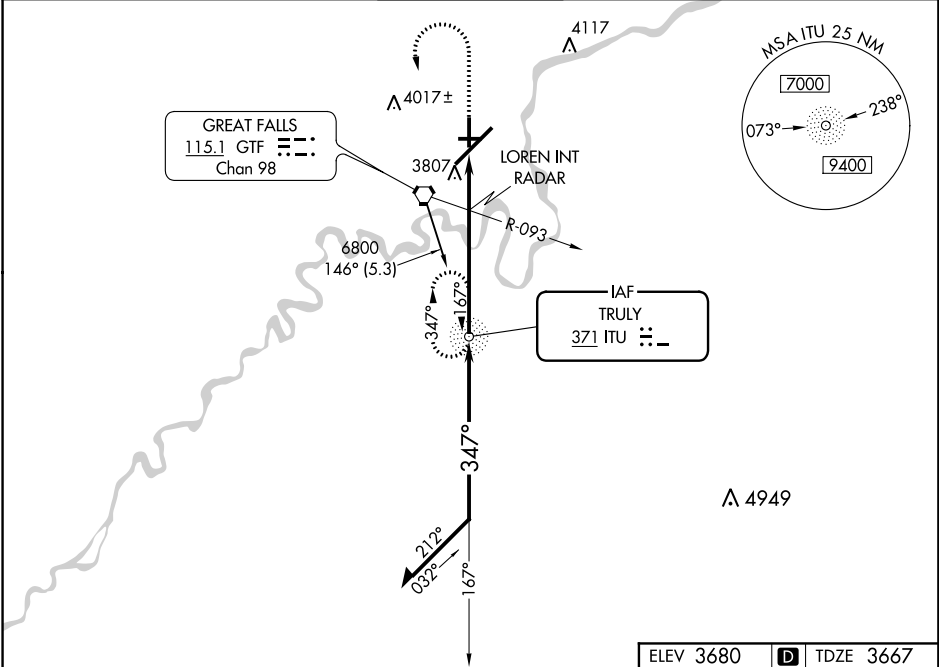
16091

NDB ITU 371	APP CRS 347°	Rwy Idg TDZE Apt Elev	5070 3667 3680
-----------------------	------------------------	-----------------------------	---

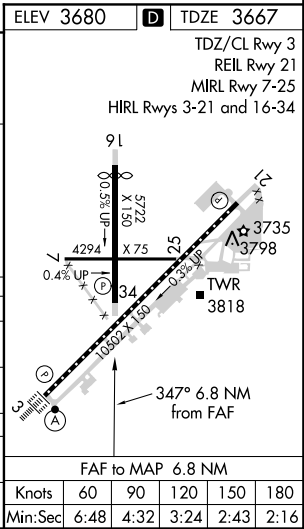
NDB RWY 34
GREAT FALLS INTL (GTF)

	MISSED APPROACH: Climb to 5500 via ITU NDB 347° bearing, then left turn to 6700 direct ITU NDB and hold.
--	--

ATIS 126.6 269.0	GREAT FALLS APP CON 128.6 379.17	GREAT FALLS TOWER 118.7 282.2	GND CON 121.7 348.6	CLNC DEL 121.7 348.6
----------------------------	--	---	-------------------------------	--------------------------------



CATEGORY	A	B	C	D
S-34	4340-1 673 (700-1)		4340-2 673 (700-2)	4340-2 1/4 673 (700-2 1/4)
CIRCLING	4340-1 660 (700-1)		4340-2 660 (700-2)	4340-2 1/4 660 (700-2 1/4)
LOREN INT/RADAR MINIMUMS				
S-34	4120-1 453 (500-1)		4120-1 1/4 453 (500-1 1/4)	4120-1 1/2 453 (500-1 1/2)
CIRCLING	4120-1 440 (500-1)	4140-1 460 (500-1)	4140-1 1/2 460 (500-1 1/2)	4240-2 560 (600-2)



GREAT FALLS, MONTANA
Amdt 16C 03APR14

47°29'N-111°22'W

GREAT FALLS INTL (GTF)
NDB RWY 34

30 MAR 2017 to 27 APR 2017

30 MAR 2017 to 27 APR 2017