


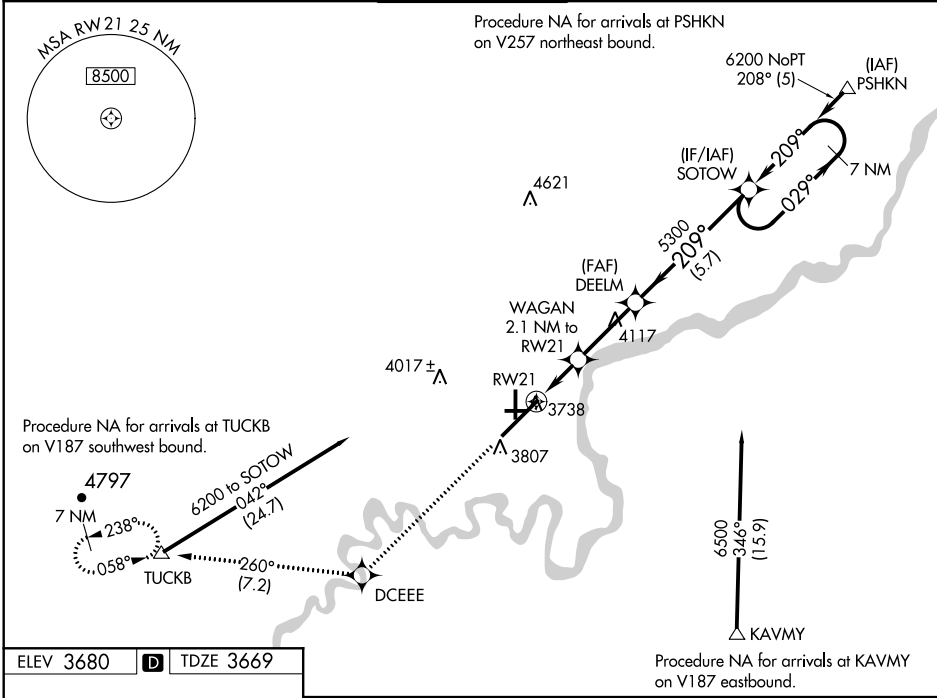
Flight Procedure Tracking Form		Action: AMENDMENT	Task Type: IAP	Date Open: 09/24/2015	Task #: 2014122929673401007	Request #: 20141229296734
Procedure: RNAV (GPS) Y RWY 21 AMDT 0C			Airport ID: KGTF	Airport: GREAT FALLS INTL		Reimbursable #: YES
City: GREAT FALLS	ST: MT	GPS #:	Estimated Chart Date: 08/17/2017		FICO #:	
Fac ID: N/A		Fac. Type:			Specialist: DEANNA FIELDS	
Procedure Review						
	Rec'd	Rel'd	Full Name	Comments		
Lead:	01/17/2017					
QA:						
Liaison:						
Procedure Comments: ENROUTE-NON Remark Type: INFORMATION REQUEST FC TABLE TOP. ASSIGNED MAG VAR, KGTF OLD 16E-NEW 13E. CONTACT: JACOB POWERS, SUB-TEAM MANAGER, IFP TEAM 3, 405.954.8702 (OR) PATRICK MULQUEEN, MANAGER, AJV-543, INSTRUMENT FLIGHT PROCEDURES TEAM 3, 405.954.4073.						

WAAS CH 90221 W21A	APP CRS 209°	Rwy Idg 10502 TDZE 3669 Apt Elev 3680
--	------------------------	--

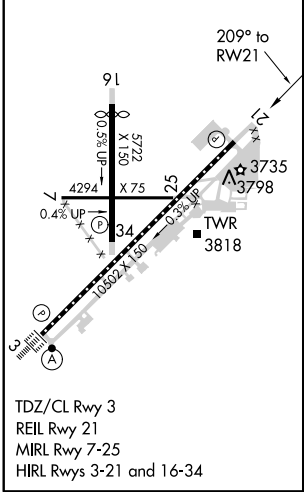
RNAV (GPS) Y RWY 21
GREAT FALLS INTL (GTF)

T	DME/DME RNP-0.3 NA. For uncompensated Baro-VNAV systems, -33°C/-27°F LNAV/VNAV NA below -24°C (-11°F) or above 49°C (121°F).	MISSED APPROACH: Climb to 8000 direct DCEEE and on track 260° to TUCKB and hold, continue climb-in-hold to 8000.
----------	---	--

ATIS 126.6 269.0	GREAT FALLS APP CON 128.6 379.17	GREAT FALLS TOWER 118.7 282.2	GND CON 121.7 348.6	CLNC DEL 121.7 348.6
----------------------------	--	---	-------------------------------	--------------------------------



ELEV 3680	D	TDZE 3669
-----------	----------	-----------

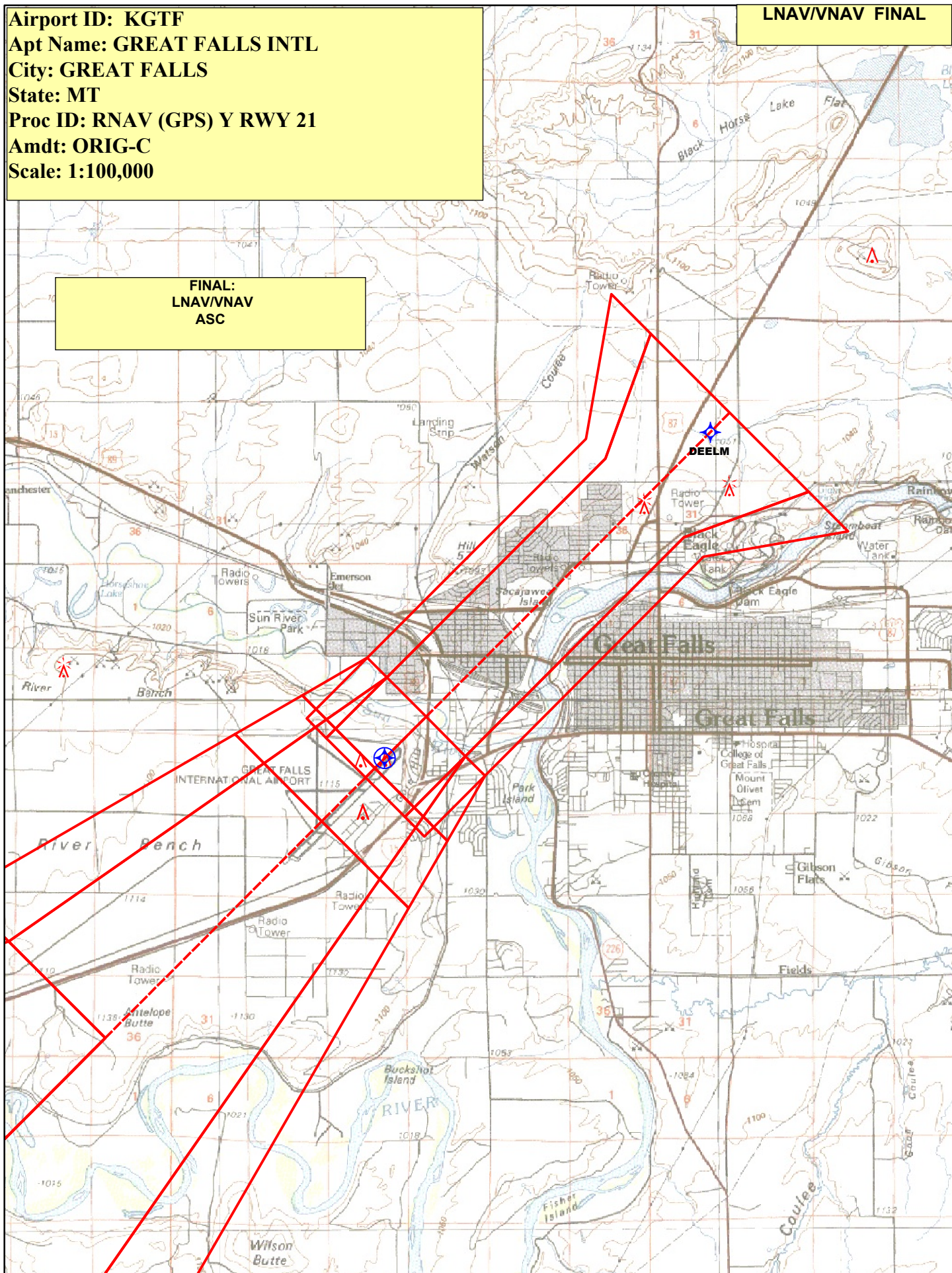


8000	DCEEE	tr 260°	TUCKB	VGSI and RNAV glidepath not coincident. (VGSI Angle 3.00/TCH 75).
				SOTOW 7 NM Holding Pattern
*LNAV only.				
	WAGAN 2.1 NM to RW21	DEELM 5300	209°	029° 6200
	0.8 NM to RW21	4380	5300	GP 3.00° TCH 59
	0.8	1.3 NM	2.9 NM	5.7 NM
CATEGORY	A	B	C	D
LPV DA	3869/40 200 (200-¾)			
LNAV/VNAV DA	3927/45 258 (300-¾)			
LNAV MDA	4000/55 331 (400-1¼)			
CIRCLING	4120-1 440 (500-1)	4140-1 460 (500-1)	4140-1½ 460 (500-1½)	4240-2 560 (600-2)

Airport ID: KGTF
Apt Name: GREAT FALLS INTL
City: GREAT FALLS
State: MT
Proc ID: RNAV (GPS) Y RWY 21
Amdt: ORIG-C
Scale: 1:100,000

LNAV/VNAV FINAL

**FINAL:
LNAV/VNAV
ASC**

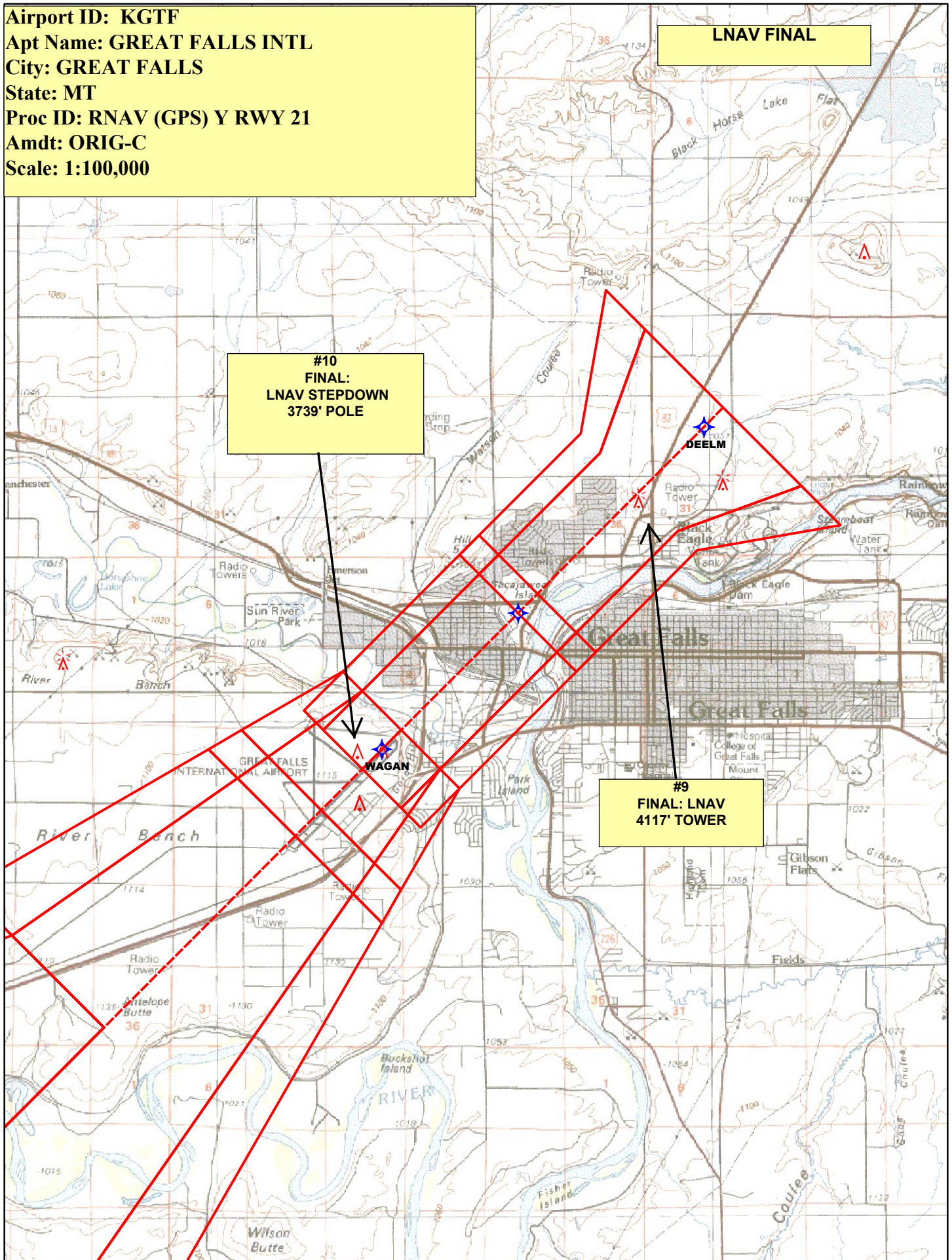


Airport ID: KGTF
Apt Name: GREAT FALLS INTL
City: GREAT FALLS
State: MT
Proc ID: RNAV (GPS) Y RWY 21
Amdt: ORIG-C
Scale: 1:100,000

LNAV FINAL

**#10
FINAL:
LNAV STEPDOWN
3739' POLE**

**#9
FINAL: LNAV
4117' TOWER**



Airport ID: KGTF
Apt Name: GREAT FALLS INTL
City: GREAT FALLS
State: MT
Proc ID: RNAV (GPS) Y RWY 21
Amdt: ORIG-C
Scale: 1:100,000

CIRCLING

#17
CIRCLING CAT C
4017' WMILL

#18
CIRCLING CAT D
4117' TOWER

#16
CIRCLING CAT A/B
3818' TOWER

