



<b>Flight Procedure Tracking Form</b>		<b>Action:</b> AMENDMENT	<b>Task Type:</b> IAP	<b>Date Open:</b> 09/24/2015	<b>Task #:</b> 2014122929673401005	<b>Request #:</b> 20141229296734
<b>Procedure:</b> APPROACH ILS RWY 3 AMDT 5C			<b>Airport ID:</b> KGTF	<b>Airport:</b> GREAT FALLS INTL		<b>Reimbursable #:</b> YES
<b>City:</b> GREAT FALLS	<b>ST:</b> MT	<b>GPS #:</b>	<b>Estimated Chart Date:</b> 08/17/2017		<b>FICO #:</b>	
<b>Fac ID:</b> N/A		<b>Fac. Type:</b>		<b>Specialist:</b> DEANNA FIELDS		
<b>Procedure Review</b>						
	<b>Rec'd</b>	<b>Rel'd</b>	<b>Full Name</b>	<b>Comments</b>		
<b>Lead:</b>	01/17/2017					
<b>QA:</b>						
<b>Liaison:</b>						
<b>Procedure Comments:</b>			ENROUTE-NON	<b>Remark Type:</b> INFORMATION		
REQUEST FC TABLE TOP. ASSIGNED MAG VAR, KGTF OLD 16E-NEW 13E.  CONTACT: JACOB POWERS, SUB-TEAM MANAGER, IFP TEAM 3, 405.954.8702 (OR) PATRICK MULQUEEN, MANAGER, AJV-543, INSTRUMENT FLIGHT PROCEDURES TEAM 3, 405.954.4073.						

OLD

GREAT FALLS, MONTANA

AL-177 (FAA)

16091

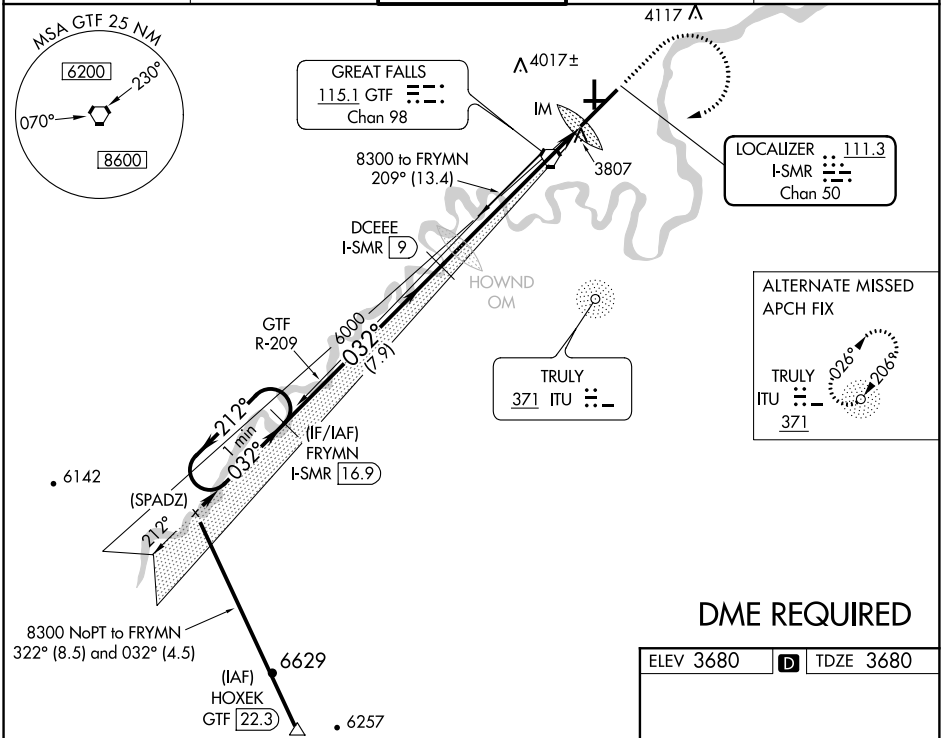
LOC/DME I-SMR	APP CRS	Rwy Idg	10502
111.3	032°	TDZE	3680
Chan 50		Apt Elev	3680

# ILS RWY 3 (CAT II & III)

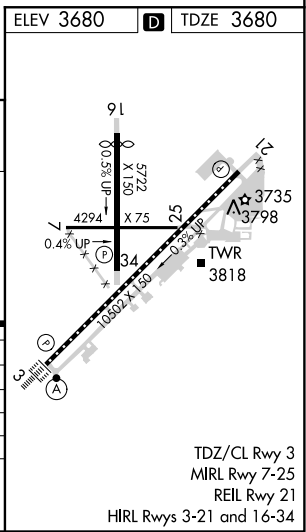
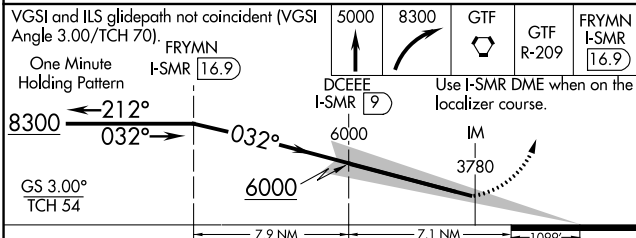
GREAT FALLS INTL (GTF)

<b>V</b> CAT II; RVR 1000 authorized with specific OPSPEC, MSPEC, or LOA approval and use of autoland or HUD to touchdown.	ALSIF-2	MISSED APPROACH: Climb to 5000 then climbing right turn to 8300 direct GTF VORTAC then on GTF VORTAC R-209 to FRYMNI/I-SMR 16.9 DME and hold.
--	---------	---

ATIS 126.6 269.0	GREAT FALLS APP CON 128.6 379.17	GREAT FALLS TOWER 118.7 282.2	GND CON 121.7 348.6	CLNC DEL 121.7 348.6
---------------------	-------------------------------------	----------------------------------	------------------------	-------------------------



## DME REQUIRED



CATEGORY	A	B	C	D
S-ILS 3	CAT II RA 96/12 100 DA 3780			
S-ILS 3	CAT IIIa RVR 07			
S-ILS 3	CAT IIIb RVR 06			
S-ILS 3	CAT IIIc NA			
CATEGORY II & III ILS - SPECIAL AIRCREW & AIRCRAFT CERTIFICATION REQUIRED				

GREAT FALLS, MONTANA  
Amdt 5B 24JUL14

47°29'N-111°22'W

GREAT FALLS INTL (GTF)  
ILS RWY 3 (CAT II & III)

30 MAR 2017 to 27 APR 2017

30 MAR 2017 to 27 APR 2017

OLD

GREAT FALLS, MONTANA

AL-177 (FAA)

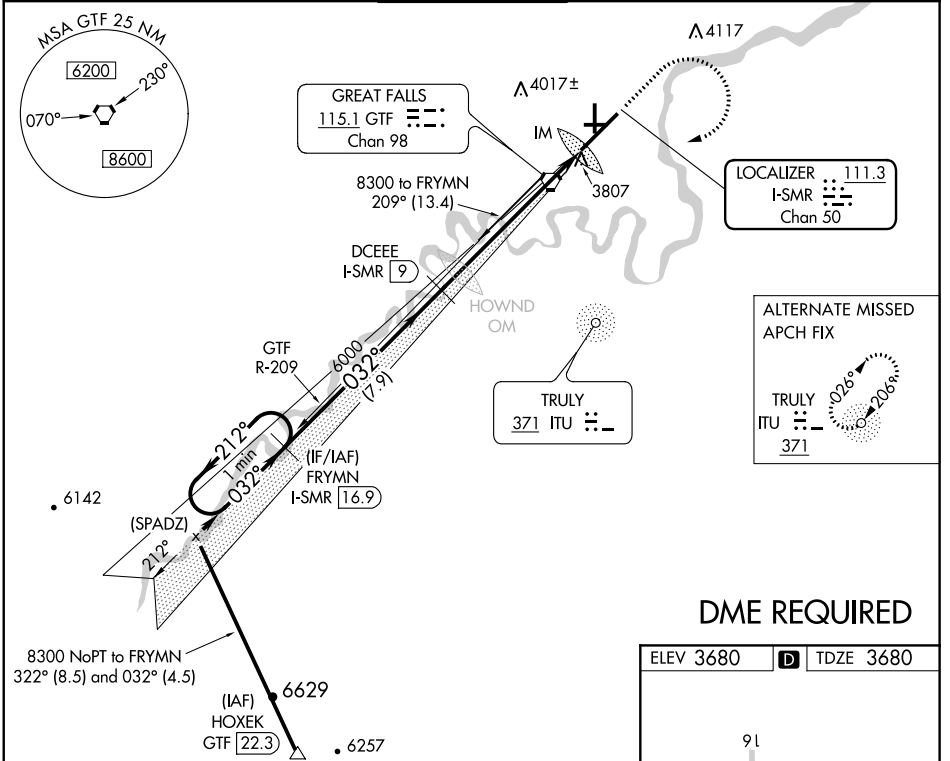
16091

LOC/DME I-SMR <b>111.3</b> Chan 50	APP CRS <b>032°</b>	Rwy Idg TDZE <b>3680</b> Apt Elev <b>3680</b>
--	------------------------	---

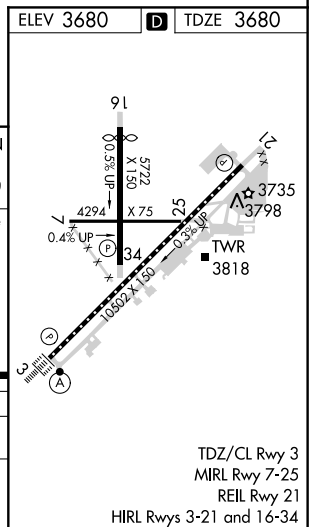
# ILS RWY 3 (SA CAT I) GREAT FALLS INTL (GTF)

<p><b>V</b> Requires specific OPSPEC, MSPEC, or LOA approval and use of HUD to DH.</p> <p><b>33</b> -33°C/-27°F</p>	<p>ALSF-2</p>	<p>MISSED APPROACH: Climb to 5000 then climbing right turn to 8300 direct GTF VORTAC then on GTF VORTAC R-209 to FRYMN/I-SMR 16.9 DME and hold.</p>
---	---------------	---

<p>ATIS <b>126.6 269.0</b></p>	<p>GREAT FALLS APP CON <b>128.6 379.17</b></p>	<p>GREAT FALLS TOWER <b>118.7 282.2</b></p>	<p>GND CON <b>121.7 348.6</b></p>	<p>CLNC DEL <b>121.7 348.6</b></p>
------------------------------------	--	---	---------------------------------------	--



## DME REQUIRED



<p>VGSI and ILS glidepath not coincident (VGSI Angle 3.00°/TCH 70).</p> <p>One Minute Holding Pattern</p> <p>FRYMN I-SMR 16.9</p>	<p>5000 8300 GTF GTF FRYMN</p> <p>I-SMR 9 I-SMR 16.9</p>	<p>DCEEE I-SMR 9</p> <p>Use I-SMR DME when on the localizer course.</p>
<p>8300 212° 032° 032°</p> <p>GS 3.00° TCH 54</p>	<p>6000 6000</p>	<p>IM</p>
<p>CATEGORY A B C D</p>	<p>RA 140/14 150 DA 3830</p>	<p>7.9 NM 7.1 NM 10.9 NM</p>
<p>S-ILS 3</p>	<p>SA CATEGORY I ILS-SPECIAL AIRCREW &amp; AIRCRAFT CERTIFICATION REQUIRED</p>	<p></p>

GREAT FALLS, MONTANA

Amtd 5B 24JUL14

47°29'N-111°22'W

GREAT FALLS INTL (GTF)  
ILS RWY 3 (SA CAT I)



30 MAR 2017 to 27 APR 2017

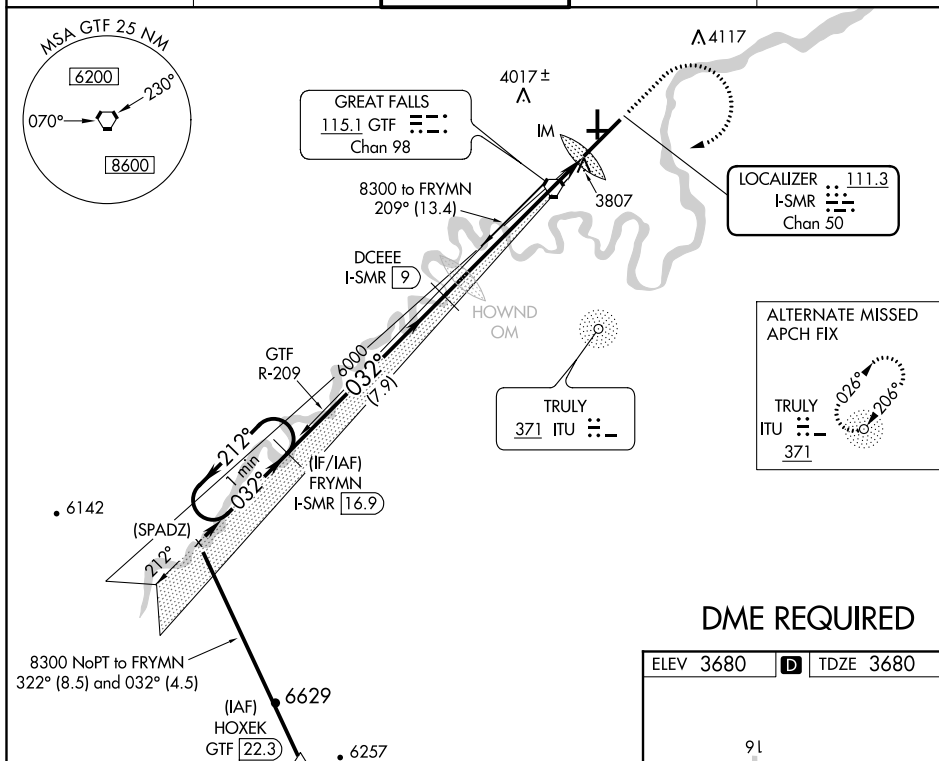
30 MAR 2017 to 27 APR 2017

GREAT FALLS, MONTANA

LOC/DME I-SMR <b>111.3</b> Chan <b>50</b>	APP CRS <b>032°</b>	Rwy Idg <b>10502</b> TDZE <b>3680</b> Apt Elev <b>3680</b>
---	------------------------	--

ILS or LOC/DME RWY 3  
GREAT FALLS INTL (GTF)

 -33°C/-27°F		ALSF-2 	MISSED APPROACH: Climb to 5000 then climbing right turn to 8300 direct GTF VORTAC then on GTF VORTAC R-209 to FRYMN/I-SMR 16.9 DME and hold.	
ATIS <b>126.6 269.0</b>	GREAT FALLS APP CON <b>128.6 379.17</b>	GREAT FALLS TOWER <b>118.7 282.2</b>	GND CON <b>121.7 348.6</b>	CLNC DEL <b>121.7 348.6</b>



## DME REQUIRED

GREAT FALLS, MONTANA

Amdt 5B 24JUL14

47°29'N-111°22'W

GREAT FALLS INTL (GTF)

## PLAN 3

RWY 3

ILS or LOC/DME RWY 3

30 MAR 2017 to 27 APR 2017

30 MAR 2017 to 27 APR 2017



**Airport ID: KGTF**  
**Apt Name: GREAT FALLS INTL**  
**City: GREAT FALLS**  
**State: MT**  
**Proc ID: ILS OR LOC RWY 3**  
**Amdt: 5C**  
**Scale: 1:100,000**

## CIRCLING

