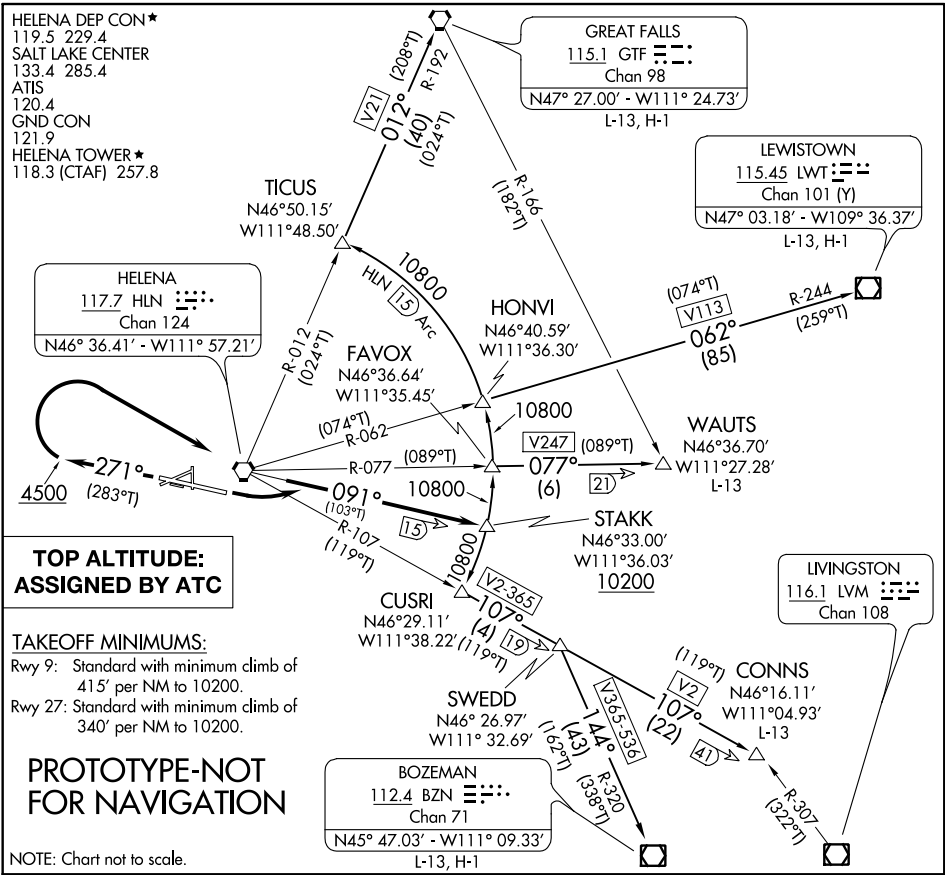


Flight Procedures Cover Page	Task Action: Abbreviated Amendment	Task Type: SID	Estimated Chart Date: 02/23/2023	APWS Task ID: 69B8822FB4DF422AA7ADBB1C8A3DFF26	APWS Project ID: 386D1B27459045768E779EFFF1EA16BE
Procedure: SID STAKK FIVE HELENA MT KHLN		Enroute: YES	Specialist: Donkor, Kweku		Agreement Number:
Airport ID: KHLN			Airport City: HELENA		State: MT
Facility ID: HLN	Facility Type: VORTAC	Flight Inspection Remark Type:			
<p><b>Procedure Comments:</b>            PENDING AIRPORT (KHLN) AND NAVAID (HLN VORTAC) DATA USED.</p> <p>ASSIGNED MAG VAR, HLN            VORTAC: OLD 16E-NEW 12E            KHLN: OLD 16E-NEW 12E</p> <p>PROCESSED IAW TECHNICAL SUPPORT GROUP (AJF-17) MEMO DATED 07/07/2021, SUBJECT: GUIDANCE FOR PROCEDURAL CHANGES REQUIRING FLIGHT INSPECTION/VALIDATION.</p> <p>CONTACT: JOHNNIE BAKER 405-954-5148/DAVID TEFFETELLER 202-267-5177.</p> <p>12/22/2022: THIS A CORRECTED COPY OF THE FORM APPROVED ON 11/21/2022.            CHANGED REQUIRED EFFECTIVE DATE FROM 12/29/2022 TO 02/23/2023.</p>					



(STAKK5.STAKK) FIG  
STAKK FIVE DEPARTURE

HELENA RGNL (HLN)  
HELENA, MONTANA



**DEPARTURE ROUTE DESCRIPTION**

**TAKEOFF RUNWAY 9:** Climbing left turn to intercept HLN R-091 to cross STAKK at or above 10200, thence. . . .

**TAKEOFF RUNWAY 27:** Climb heading 271° to 4500 then climbing right turn direct HLN VORTAC. Continue climb on HLN R-091 to cross STAKK at or above 10200, thence. . . .

. . . maintain assigned altitude.

**BOZEMAN TRANSITION (STAKK5.BZN):** From over STAKK on 15 DME Arc to CUSRI INT, then on HLN R-107 to SWEDD INT, then on BZN R-320 to BZN VOR/DME.

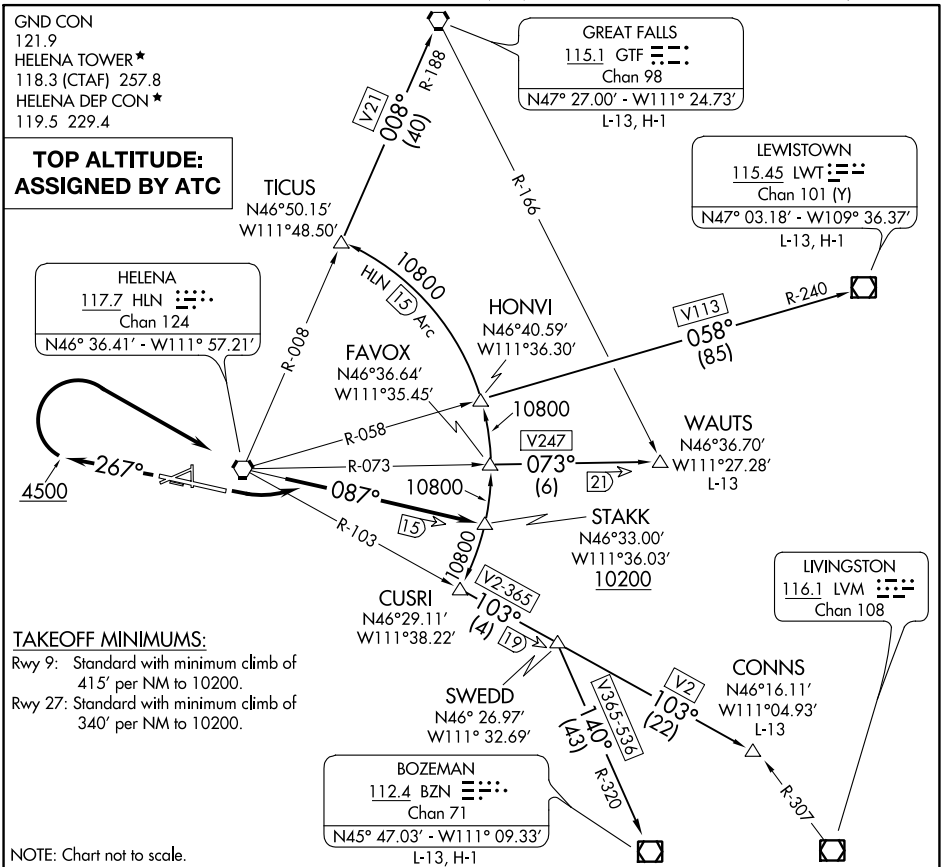
**CONNS TRANSITION (STAKK5.CONNS):** From over STAKK on 15 DME Arc to CUSRI INT, then on HLN R-107 to SWEDD INT, then on HLN R-107 to CONNS INT.

**GREAT FALLS TRANSITION (STAKK5.GTF):** From over STAKK on 15 DME Arc to FAVOX, then on 15 DME Arc to HONVI, then on 15 DME Arc to TICUS, then on HLN R-012 and GTF R-192 to GTF VORTAC.

**LEWISTOWN TRANSITION (STAKK5.LWT):** From over STAKK on 15 DME Arc to FAVOX, then on 15 DME Arc to HONVI, then on HLN R-062 and LWT R-244 to LWT VOR/DME.

**WAUTS TRANSITION (STAKK5.WAUTS):** From over STAKK on 15 DME Arc to FAVOX, then on HLN R-077 to WAUTS INT.

(STAKK4.STAKK) 20086  
STAKK FOUR DEPARTURE



DEPARTURE ROUTE DESCRIPTION

**TAKEOFF RUNWAY 9:** Climbing left turn to intercept HLN R-087 to cross STAKK at or above 10200. Thence via transition.

**TAKEOFF RUNWAY 27:** Climb heading 267° to 4500 then climbing right turn direct HLN VORTAC. Continue climb on HLN R-087 to cross STAKK at or above 10200. Thence via transition.

**BOZEMAN TRANSITION (STAKK4.BZN):** From over STAKK on 15 DME Arc to CUSRI INT, then on HLN R-103 to SWEDD INT, then on BZN R-320 to BZN VOR/DME.

**CONNS TRANSITION (STAKK4.CONNS):** From over STAKK on 15 DME Arc to CUSRI INT, then on HLN R-103 to SWEDD INT, then on HLN R-103 to CONNS INT.

**GREAT FALLS TRANSITION (STAKK4.GTF):** From over STAKK on 15 DME Arc to FAVOX, then on 15 DME Arc to HONVI, then on 15 DME Arc to TICUS, then on HLN R-008 and GTF R-188 to GTF VORTAC.

**LEWISTOWN TRANSITION (STAKK4.LWT):** From over STAKK on 15 DME Arc to FAVOX, then on 15 DME Arc to HONVI, then on HLN R-058 and LWT R-240 to LWT VOR/DME.

**WAUTS TRANSITION (STAKK4.WAUTS):** From over STAKK on 15 DME Arc to FAVOX, then on HLN R-073 to WAUTS INT.

STAKK FOUR DEPARTURE  
(STAKK4.STAKK) 21JUL16

HELENA, MONTANA  
HELENA RGNL (HLN)

NW-1, 11 AUG 2022 to 08 SEP 2022

NW-1, 11 AUG 2022 to 08 SEP 2022



# Federal Aviation Administration

## Initial Development Notification for AIRNAV Pending Records

To: Scott Jerden, Manager Aeronautical Data Team, AJV-A31

From: Bev Bordy, Manager Instrument Flight Procedures Projects Team, AJV-A4

Subject: **ACTION:** Request for Pending Records **KHLN\_\_HELENA RGNL, , MT US**

The Magnetic Variation (MV) data for the airport(s) and/or facility(s) listed will be revised effective concurrent with the publication of the procedure(s) listed below. Estimated Chart Date: 12/29/2022

Current/Assigned MV E 16 1990 New MV E 12 2025

ECD	Airport ID	Procedure Name	AMDT #	Task Report Type Selections
12/29/2022	KHLN	APPROACH ILS OR LOC Z RWY 27 AMDT 3		MAGVAR
12/29/2022	KHLN	APPROACH LOC/DME BC C AMDT 6		MAGVAR
12/29/2022	KHLN	APPROACH RNAV (GPS) X RWY 27 AMDT 2		MAGVAR
12/29/2022	KHLN	APPROACH RNAV (GPS) Y RWY 9 AMDT 2		MAGVAR WAAS NEW
12/29/2022	KHLN	APPROACH RNAV (RNP) Y RWY 27 AMDT 1		MAGVAR
12/29/2022	KHLN	APPROACH RNAV (RNP) Z RWY 27 AMDT 1		MAGVAR
12/29/2022	KHLN	APPROACH RNAV (RNP) Z RWY 9 AMDT 1		MAGVAR
12/29/2022	KHLN	APPROACH VOR A AMDT 16		MAGVAR
12/29/2022	KHLN	APPROACH VOR/DME B AMDT 8		MAGVAR
12/29/2022	KHLN	COPTER VOR 254 AMDT 1		MAGVAR
12/29/2022	KHLN	DIVIDE TWO HELENA MT KHLN		MAGVAR
12/29/2022	KHLN	HELENA MT KHLN AMDT 10A		MAGVAR
12/29/2022	KHLN	ILS OR LOC Y RWY 27 AMDT 4		MAGVAR
12/29/2022	KHLN	SID HELENA FIVE HELENA MT KHLN		MAGVAR
12/29/2022	KHLN	SID STAKK FIVE HELENA MT KHLN		MAGVAR
12/29/2022	KHLN	SIEBE FOUR HELENA MT KHLN		MAGVAR

NAVAID ID / RWY	Type / Old No.	Use / New RWY/Note
HAU (HAUSER)	NDB/M	NDB/M
HLN	VORTAC	VORTAC
I-HLN	ILS	ILS

RUNWAYS WILL NOT BE RENUMBERED

IF you have any questions please notify: Eric.N.Suski@faa.gov

