

Flight Procedures Cover Page	Task Action: Abbreviated Amendment	Task Type: SID	Estimated Chart Date: 02/23/2023	APWS Task ID: 3AB0289C57A344B29DDAB98F479E7DAF	APWS Project ID: 386D1B27459045768E779EFFF1EA16BE
Procedure: SID HELENA FIVE HELENA MT KHLN		Enroute: YES	Specialist: Donkor, Kweku		Agreement Number:
Airport ID: KHLN			Airport City: HELENA		State: MT
Facility ID: HLN	Facility Type: VORTAC	Flight Inspection Remark Type:			
<p>Procedure Comments: PENDING AIRPORT (KHLN) AND NAVAID (HLN VORTAC) DATA USED.</p> <p>ASSIGNED MAG VAR, HLN VORTAC: OLD 16E-NEW 12E KHLN: OLD 16E-NEW 12E</p> <p>PROCESSED IAW TECHNICAL SUPPORT GROUP (AJF-17) MEMO DATED 07/07/2021, SUBJECT: GUIDANCE FOR PROCEDURAL CHANGES REQUIRING FLIGHT INSPECTION/ VALIDATION.</p> <p>CONTACT: JOHNNIE BAKER 405-954-5148/DAVID TEFFETELLER 202-267-5177.</p> <p>12/22/2022: THIS A CORRECTED COPY OF THE FORM APPROVED ON 11/21/2022. CHANGED REQUIRED EFFECTIVE DATE FROM 12/29/2022 TO 02/23/2023.</p>					



(HLN5.HLN) FIG

HELENA FIVE DEPARTURE

AL-192 (FAA)

HELENA RGNL (HLN)

HELENA, MONTANA

SALT LAKE CENTER

133.4 285.4

HELENA TOWER ★

118.3 (CTAF) 257.8

HELENA DEP CON ★

119.5 229.4

GDN CON

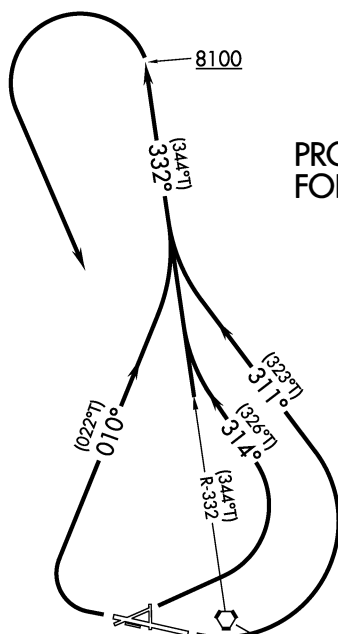
121.9

ATIS

120.4

TOP ALTITUDE:

9000



**PROTOTYPE-NOT
FOR NAVIGATION**

HELENA
117.7 HLN
Chan 124
N46° 36.41' - W111° 57.21'
L-13, H-1

TAKEOFF MINIMUMS

Rwy 5: Standard with minimum climb of 250' per NM to 8100.

Rwy 9: Standard with minimum climb of 240' per NM to 8100.

Rwys 17, 23: NA- Obstacles.

Rwy 27: Standard with minimum climb of 390' per NM to 8100.

Rwy 35: NA- ATC.

NOTE: Chart not to scale.

DEPARTURE ROUTE DESCRIPTION

TAKEOFF RUNWAY 5: Climbing left turn heading 314°, thence . . .

TAKEOFF RUNWAY 9: Climbing left turn heading 311°, thence . . .

TAKEOFF RUNWAY 27: Climbing right turn heading 010°, thence . . .

. . . intercept HLN VORTAC R-340 to 8100, then climbing left turn to 9000
on HLN VORTAC R-340 to HLN VORTAC.

HELENA FIVE DEPARTURE

(HLN5.HLN) FIG

HELENA, MONTANA

HELENA RGNL (HLN)

OLD

(HLN4.HLN) 16203

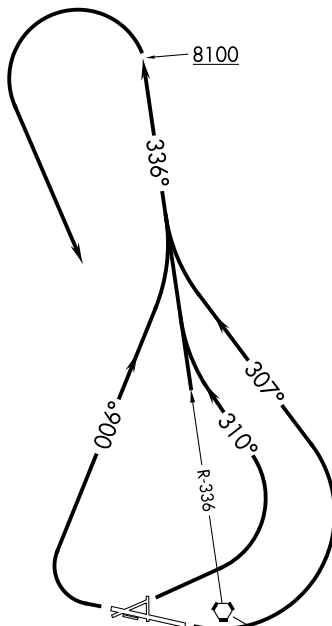
HELENA FOUR DEPARTURE

SL-192 (FAA)

HELENA RGNL (HLN)
HELENA, MONTANA

HELENA TOWER ★
118.3 (CTAF) 257.8
HELENA DEP CON ★
119.5 229.4
SALT LAKE CENTER
133.4 285.4

TOP ALTITUDE:
9000



HELENA
117.7 HLN
Chan 124
N46° 36.41' - W111° 57.21'
L-13, H-1

TAKEOFF MINIMUMS

Rwy 5: Standard with minimum climb of 250' per NM to 8100.
Rwy 9: Standard with minimum climb of 240' per NM to 8100.
Rwys 17, 23: NA- Obstacles.
Rwy 27: Standard with minimum climb of 390' per NM to 8100.
Rwy 35: NA- ATC.

(NOTES ON FOLLOWING PAGE)

NOTE: Chart not to scale.

DEPARTURE ROUTE DESCRIPTION

TAKEOFF RUNWAY 5: Climbing left turn heading 310° to intercept HLN VORTAC R-336 to 8100', then climbing left turn to 9000' via HLN VORTAC R-336 to HLN VORTAC.

TAKEOFF RUNWAY 9: Climbing left turn heading 307° to intercept HLN VORTAC R-336 to 8100', then climbing left turn to 9000' via HLN VORTAC R-336 to HLN VORTAC.

TAKEOFF RUNWAY 27: Climbing right turn heading 006° to intercept HLN VORTAC R-336 to 8100', then climbing left turn to 9000' via HLN VORTAC R-336 to HLN VORTAC.

HELENA FOUR DEPARTURE

(HLN4.HLN) 21JUL16

HELENA, MONTANA
HELENA RGNL (HLN)

NW-1, 21 JUL 2016 to 18 AUG 2016

NW-1, 21 JUL 2016 to 18 AUG 2016

TAKEOFF OBSTACLE NOTES

- Rwy 5: Trees beginning 991' from DER, 630' right of centerline, up to 100'AGL/3939' MSL.
Rising terrain beginning 5' from DER, 495' right of centerline, up to 3826' MSL.
Fence beginning 423' from DER, 332' right of centerline, up to 12' AGL/3832' MSL.
- Rwy 9: Trees beginning 1391' from DER, 50' left of centerline, up to 100'AGL/3979' MSL.
Trees beginning 2928' from DER, 878' right of centerline, up to 100'AGL/3979' MSL.
- Rwy 23: Tower 4448' from DER, 357' left of centerline, 131'AGL/4054' MSL.
Poles beginning 1329' from DER, 3' left of centerline, up to 55'AGL/3996' MSL.
Trees beginning 1011' from DER, 37' left of centerline, up to 100'AGL/4059' MSL.
Rod on building 953' from DER, 321' left of centerline, 44'AGL/3943' MSL.
Road (1) 2374' from DER, 771' left of centerline, up to 17'AGL/3972' MSL.
Obstruction Light on hangar 457' from DER, 219' left of centerline, 43'AGL/3905' MSL.
Trees beginning 1519' from DER, 142' right of centerline, up to 52'AGL/4011' MSL.
Poles beginning 1379' from DER, 57' right of centerline, up to 46'AGL/3965' MSL.
Antenna on building 316' from DER, 352' right of centerline, 34'AGL/3913' MSL.
Building 584' from DER, 470' right of centerline, 49'AGL/3948' MSL.
- Rwy 27: Trees beginning 1079' from DER, 616' left of centerline, up to 100'AGL/3999' MSL.
Building 1593' from DER, 731' left of centerline, 18'AGL/3917' MSL.
Rising terrain beginning 101' from DER, 347' left of centerline, up to 3871' MSL.
Trees beginning 333' from DER, 507' right of centerline, up to 100'AGL/3959' MSL.

NW-1, 21 JUL 2016 to 18 AUG 2016

NW-1, 21 JUL 2016 to 18 AUG 2016



Subject: **ACTION:** Request for Pending Records **KHLN__HELENA RGNL,, MT US**

Current/Assigned MV	E 16	1990	New MV	E 12	2025
---------------------	------	------	--------	------	------

NAVAID ID / RWY	Type / Old No.	Use / New RWY/Note
HAU (HAUSER)	NDB/M	NDB/M
HLN	VORTAC	VORTAC
I-HLN	ILS	ILS

IF you have any questions please notify: Eric.N.Suski@faa.gov

