

<b>Flight Procedure Tracking Form</b>		<b>Action:</b> NEW	<b>Task Type:</b> IAP	<b>Date Open:</b> 12/26/2014	<b>Task #:</b> 2014122627425701001	<b>Request #:</b> 20141226274257
<b>Procedure:</b> ILS OR LOC RWY 13 ORIG			<b>Airport ID:</b> KBRO	<b>Airport:</b> BROWNSVILLE/SOUTH PADRE ISLAND INTL		<b>Reimbursable #:</b> NO
<b>City:</b> BROWNSVILLE	<b>ST:</b> TX	<b>GPS #:</b>	<b>Estimated Chart Date:</b> 05/26/2016			<b>FICO #:</b>
<b>Fac ID:</b> NOCHANGE		<b>Fac. Type:</b>			<b>Specialist:</b> JOHN ROSARIO	
<b>Procedure Review</b>						
	<b>Rec'd</b>	<b>Rel'd</b>	<b>Full Name</b>	<b>Comments</b>		
<b>Lead:</b>	02/17/2015			QUALITY		
<b>QA:</b>				22 4.12.2016		
<b>Liaison:</b>				CHECKED BD		
<b>Procedure Comments:</b> ENROUTE-NON <b>Remark Type:</b> INFORMATION						
BROWNSVILLE/SOUTH PADRE ISLAND INTL, BROWNSVILLE, TX (KBRO) ILS OR LOC RWY 13, ORIG 8260-3, 8260-9 8260-2: BRO VORTAC REV 8, CFBRN REV 1, DEPOO LOM REV 7, HRL VOR/DME REV 12, RELAX REV 14 LETTER OF APPROVAL FOR GLIDEPATH BELOW STANDARD 3.00 DEGREES (2.75) MAG VAR UPDATE FROM 7E TO 3E RWY RENUMBERED 13 FROM 13R  POC: JACOB POWERS: 405-954-8702 OR PETE GETZ: 405-954-4919						

QUALITY  
15  
CHECKED

To: Manager, Flight Procedure Standards

From: Steve Szukala

Manager, Instrument Flight Procedures Group

Subject: **ACTION:** Approval Request

Brownsville/South Padre Island INTL, Brownsville, TX (KBRO)

ILS OR LOC RWY 13, ORIG (replaces ILS OR LOC RWY 13R, Amdt 1B)

FAAO 8260.3B, Change 26, Vol. 3, paragraph 2-3.a. GPA... GPAs less than 3 degrees require Flight Standards or military approval (USAF not applicable).

This procedure has historically had a glidepath angle of 2.75 degrees, which is less than standard and a waiver was documented on its 8260-9. A copy of the waiver is not available; nor is any additional information regarding it.

The original waiver is hereby cancelled and an Approval Request is requested for this ILS procedure. It is cost prohibitive to change the glidepath to 3 degrees and a historical precedence is evident.

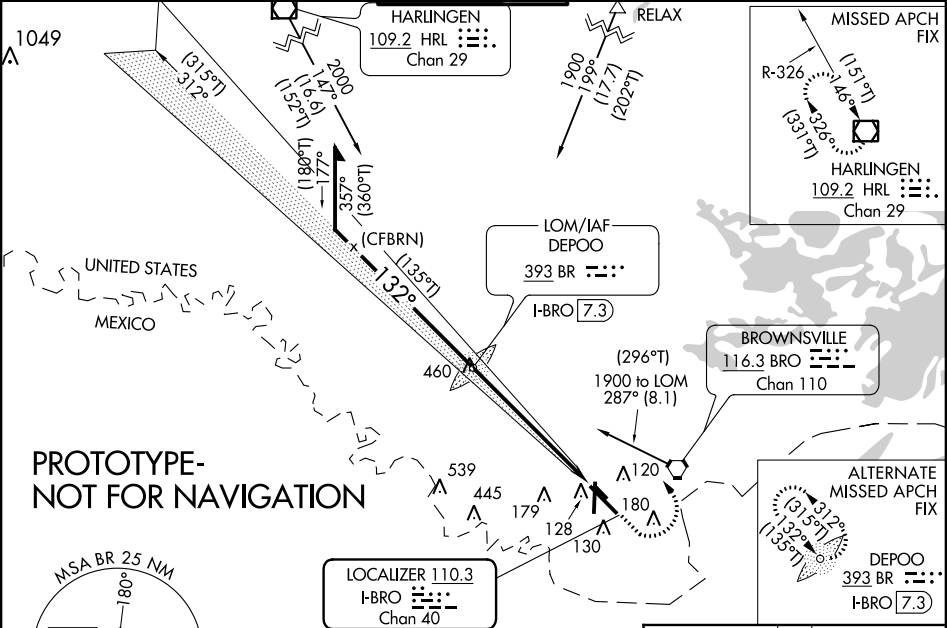
LOC/DME I-BRO	APP CRS	Rwy Idg
<b>110.3</b>	<b>132°</b>	<b>7399</b>
Chan 40		TDZE 19
		Apt Elev 22

ILS or LOC RWY 13  
SOUTH PADRE ISLAND INTL (BRO)

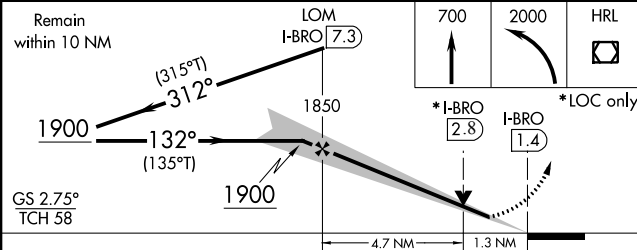
**⚠** Circling to Rwy 18 NA at night. When local altimeter setting not received, use Port Isabel altimeter setting and increase DA to 257 feet and all MDA 40 feet and S-LOC 13 Cat C and D visibility to RVR 5500, circling Cat D visibility to 2 1/4 miles. For inop MALS R increase S-LOC 13 Cats C and D visibility to 1 3/8 miles. VDP NA when using Port Isabel altimeter setting.  
\*\*RVR 1800 AUTHORIZED WITH USE OF FD OR AP OR HUD TO DA.

**MALS R**  
**MISSED APPROACH:** Climb to 700 then climbing left turn to 2000 direct HRL VOR/DME and hold.

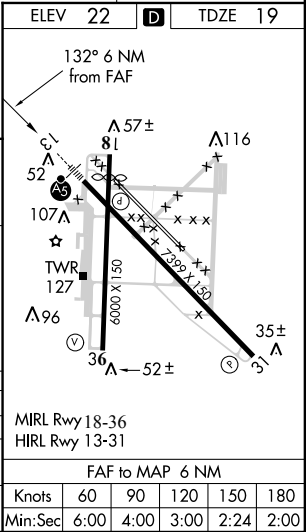
ATIS <b>128.55</b>	VALLEY APP CON <b>119.5 257.6</b>	<b>BROWNSVILLE TOWER</b> <b>118.9 (CTAF) 239.3</b>	GND CON <b>121.9</b>	UNICOM <b>122.95</b>
-----------------------	--------------------------------------	---	-------------------------	-------------------------

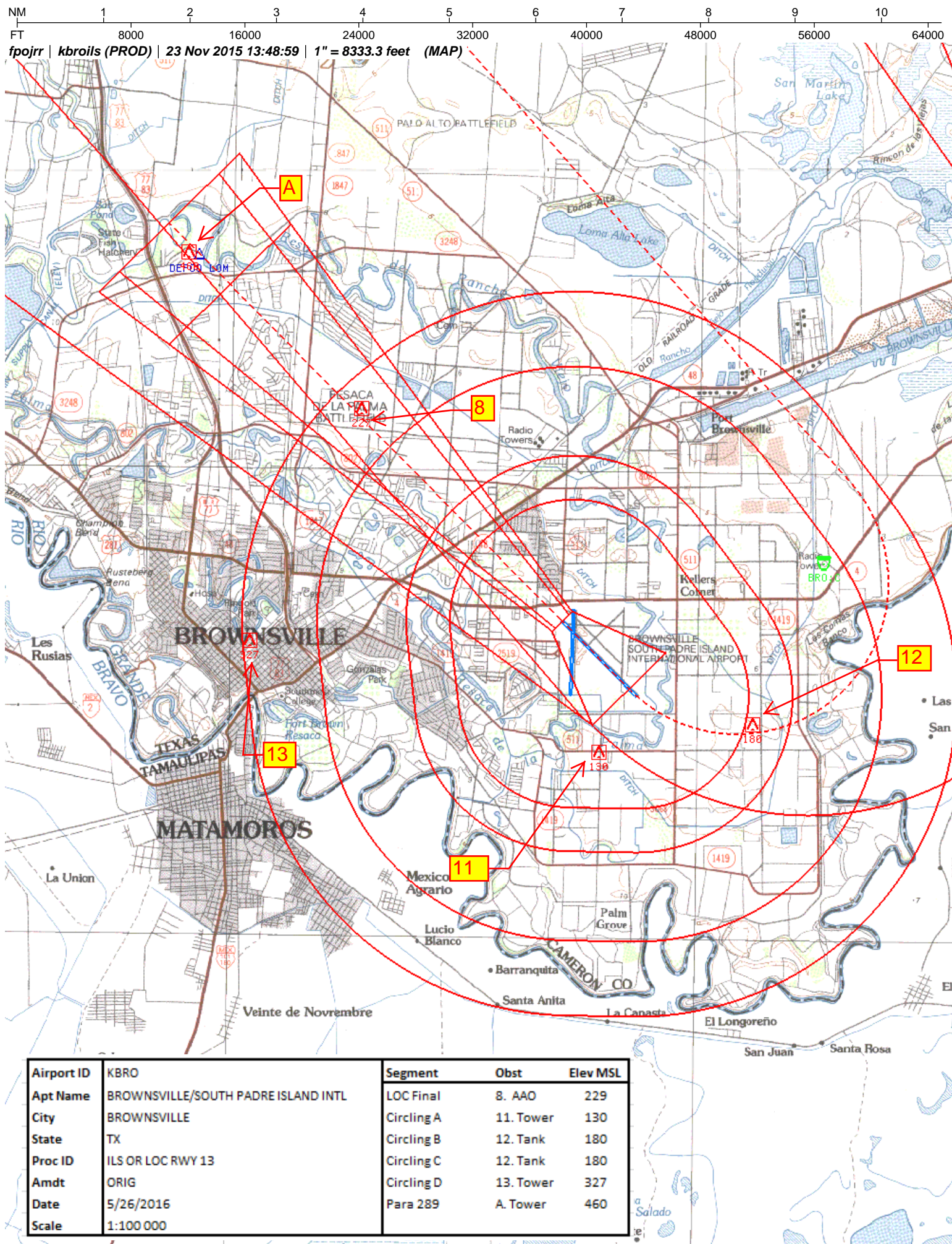


ADF or RADAR REQUIRED



CATEGORY	A	B	C	D
S-ILS 13 **		219/24	200 (200-1/2)	
S-LOC 13	480/24	461 (500-1/2)	480/50	461 (500-1)
<b>CIRCLING</b>	480-1 458 (500-1)	540-1 518 (600-1)	540-1 1/2 518 (600-1 1/2)	680-2 658 (700-2)

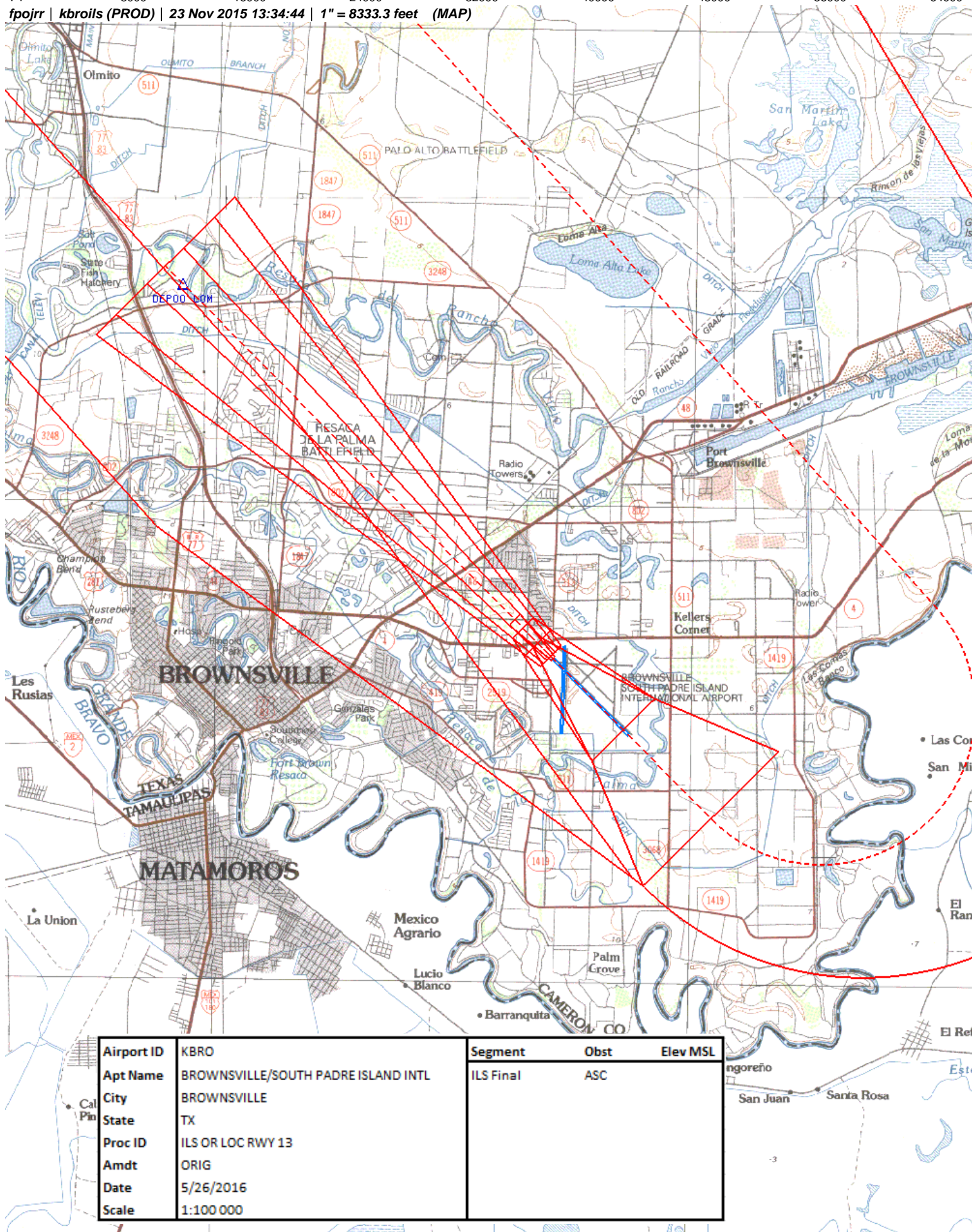






NM 1 2 3 4 5 6 7 8 9 10  
FT 8000 16000 24000 32000 40000 48000 56000 64000

fpojrr | kbroils (PROD) | 23 Nov 2015 13:34:44 | 1" = 8333.3 feet (MAP)



Airport ID	KBRO	Segment	Obst	Elev MSL
Apt Name	BROWNSVILLE/SOUTH PADRE ISLAND INTL	ILS Final	ASC	
City	BROWNSVILLE			
State	TX			
Proc ID	ILS OR LOC RWY 13			
Amdt	ORIG			
Date	5/26/2016			
Scale	1:100 000			



NM 7 14 21 28 35 42 49  
FT 42000 84000 126000 168000 210000 252000 294000

fpojrr | kbroiarn (PROD) | 18 Feb 2016 09:31:24 | 1" = 41666.7 feet (MAP)



AIRSPACE CLASSIFICATION  
MAY DIFFER BETWEEN  
(DOD USERS, SEE DOC)

NOTE: DOD L  
(NGA) FLIGHT  
INFORMATION

Airport ID	KBRO	Segment	Obst	Elev MSL
Apt Name	BROWNSVILLE/SOUTH PADRE ISLAND INTL	Alternate MA	14. Tower	539
City	BROWNSVILLE	Holding	A. Tower	549
State	TX			
Proc ID	ILS OR LOC RWY 13			
Amdt	ORIG			
Date	5/26/2016			
Scale	1:500 000			

DS  
GND

NUMERO DOS

10 TO 25 NM, 1200



NM 7 14 21 28 35 42 49  
 FT 42000 84000 126000 168000 210000 252000 294000

fpojrr | kbrols (PROD) | 23 Nov 2015 13:44:13 | 1" = 41666.7 feet (MAP)



Airport ID	KBRO	Segment	Obst	Elev MSL
Apt Name	BROWNSVILLE/SOUTH PADRE ISLAND INTL	Feeders	1. Tower	549
City	BROWNSVILLE	PT		
State	TX	Missed Apch		
Proc ID	ILS OR LOC RWY 13	Feeder	4. Tower	517
Amdt	ORIG	Intermediate	6. Tower	535
Date	5/26/2016	HRL Holding	A. Tower	529
Scale	1:500 000			

TCA  
 MATAMOROS  
 15.000







# TERMINAL AIRSPACE DATA REQUIREMENTS

CITY:

STATE:

AIRPORT NAME:

ID:

PROCEDURE:

AMDT:

DOCKET # :

(96-AXX-X/Required/Not Required)

**ALL DIST TO 1/100 NM; ELEV TO NEAREST FT; COORD TO 1/100 SEC; DEG TO 1/100 DG.**

1. Distance from \_\_\_\_\_ to 1000' point \_\_\_\_\_

(Enter THLD, FAF, ARP, FACILITY, as appropriate)

2. Width of \_\_\_\_\_ segment at 1000' point \_\_\_\_\_

(Enter appropriate segment , final, intermediate, etc.)

3. True Course of \_\_\_\_\_ segment containing 1000' point \_\_\_\_\_

4. High Terrain in \_\_\_\_\_ segment containing 1000' point \_\_\_\_\_

5. Distance from \_\_\_\_\_ to 1500' point \_\_\_\_\_

(If 1500' point in PT maneuvering area or holding pattern note in remarks)

6. Width of \_\_\_\_\_ segment at 1500' point \_\_\_\_\_

7. True Course of \_\_\_\_\_ segment containing 1500' point \_\_\_\_\_

8. High Terrain in \_\_\_\_\_ segment containing 1500' point \_\_\_\_\_

9. Threshold Coordinates (if straight-in) ... \_\_\_\_\_ / \_\_\_\_\_

10. ARP Coordinates ..... \_\_\_\_\_ / \_\_\_\_\_

11. Runway Approach End and distance furthest from ARP.....RWY \_\_\_\_\_

Distance \_\_\_\_\_ NM

12. FAF Coordinates ..... \_\_\_\_\_ / \_\_\_\_\_

(Click to Select)

**REMARKS:**