

Flight Procedure Tracking Form		Action: NEW	Task Type: IAP	Date Open: 01/05/2015	Task #: 2014122217244402001	Request #: 20141222172444
Procedure: RNAV (GPS) RWY 12 ORIG			Airport ID: KTAN	Airport: TAUNTON MUNI - KING FIELD		Reimbursable #: NO
City: TAUNTON	ST: MA	GPS #:	Estimated Chart Date: 04/27/2017		FICO #: 1179062	
Fac ID: N/A		Fac. Type:			Specialist: DAVID TEFFETELLER	
Procedure Review						
	Rec'd	Rel'd	Full Name	Comments		
Lead:	05/06/2016	01/26/2017	DANA MITCHELL			
QA:	01/26/2017	01/30/2017	TERRY HENSON			
Liaison:	01/30/2017	01/30/2017	MARY MCDONALD			
Procedure Comments: ENROUTE-NON Remark Type: INFORMATION CONTACT MARLON ROBINSON/DANA MITCHELL, (405)-954-3636/(301)-427-4897 03/08/2017: THIS IS AN UPDATED COPY OF THE FORM DEVELOPED ON 02/22/2017. CHANGED ELLIPSOIDAL HEIGHT FROM +00183 TO -00183.						

WAAS CH 99739 W12A	APP CRS 124°	Rwy Idg TDZE 41 Apt Elev 42	3500
--	------------------------	---	-------------

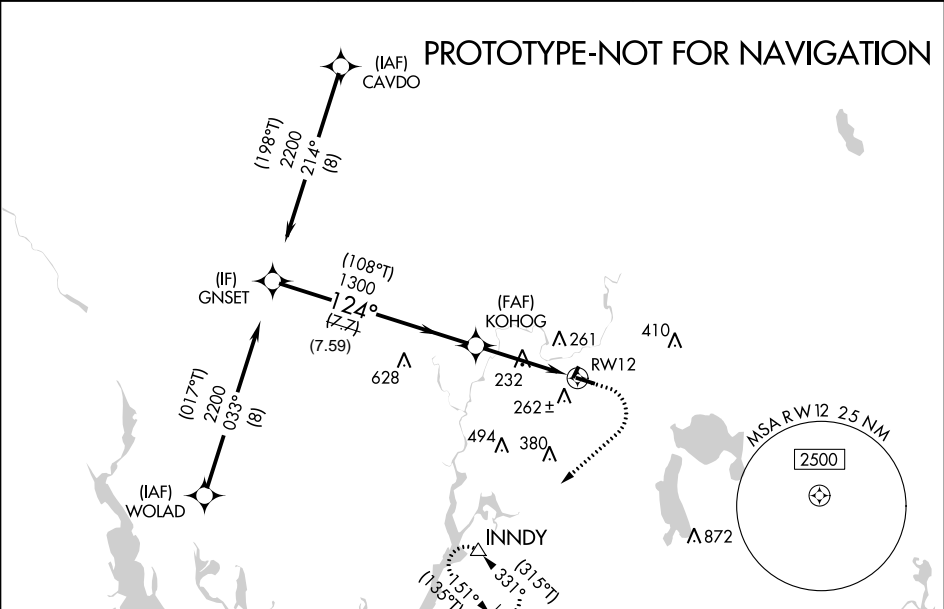
RNAV (GPS) RWY 12

TAUNTON MUNI - KING FIELD (TAN)

⚠ Circling NA to Rwy 04 and 22. For uncompensated Baro-VNAV systems, LNAV/VNAV NA below -3°C (27°F) or above 54°C (110°F). Baro-VNAV and VDP NA when using Bedford altimeter setting. DME/DME RNP -0.3 NA. Rwy 12 helicopter visibility reduction below 3/4 SM NA. When local altimeter setting not received, use New Bedford altimeter setting and increase LPV DA to 425 feet, LNAV/VNAV DA to 448 feet and all MDA 40 feet, increase LPV and LNAV/VNAV visibilities all Cats 1/8 SM, increase LNAV Cat C/D visibility 1/8 SM, and increase CIRCLING Cat D visibility 1/4 SM.

MISSED APPROACH: (Do not exceed 210 KIAS until INNDY) Climb to 500 then climbing right turn to 3000 direct INNDY and hold, continue climb in hold to 3000.

ASOS 132.675	PROVIDENCE APP CON★ 128.7 269.525	UNICOM 122.7 (CTAF) 0
------------------------	---	--



RADAR REQUIRED

ELEV 42

TDZE 41

GNSET 2200

(108°T) 124°

KOHOG 1300

1300

500

3000

INNDY

*LNAV only

*1.4 NM to RW 12

RW12

7.59 NM

2.39 NM

1.4 NM

GP 3.00°

TCH 57

22

12

30

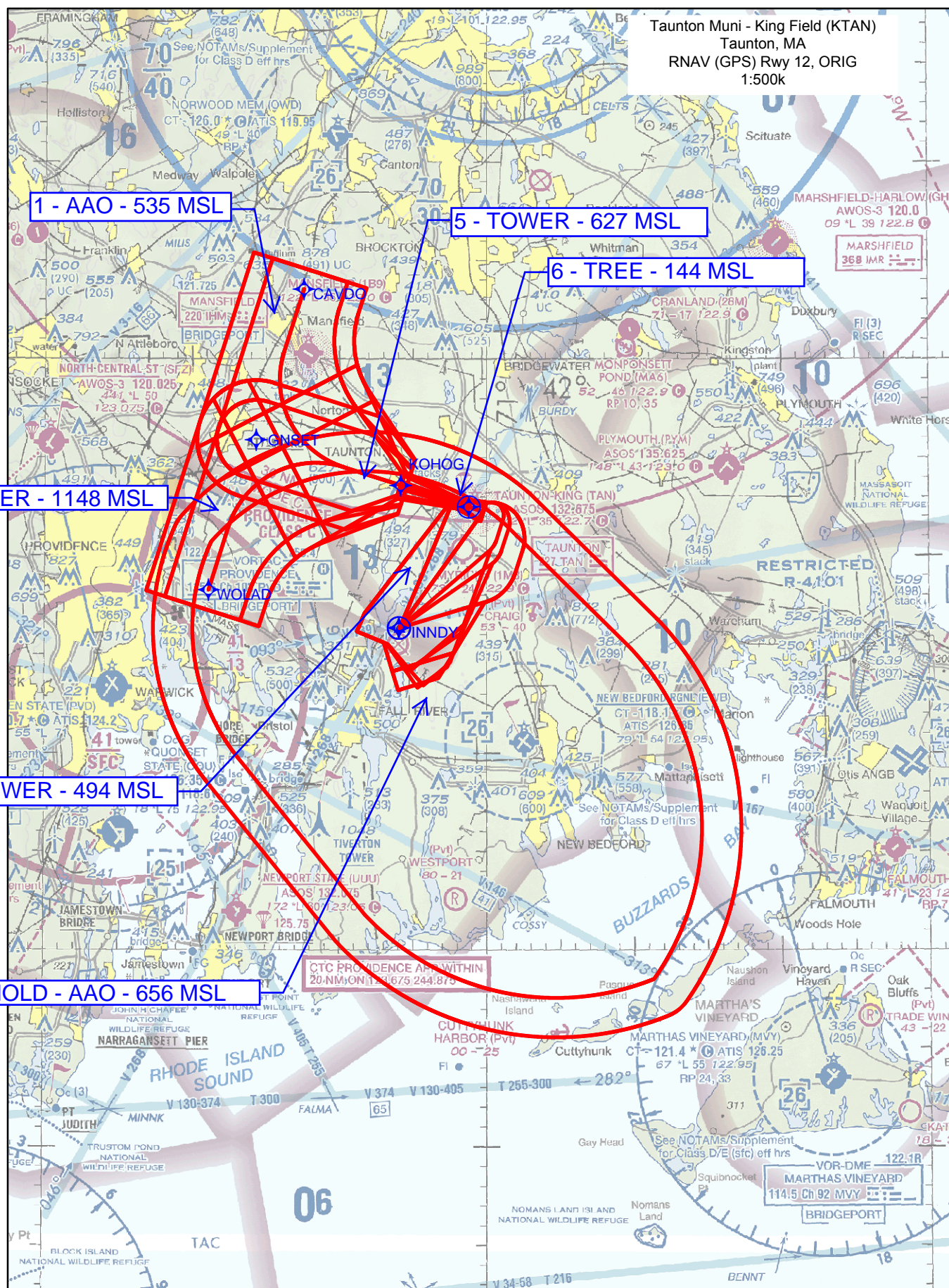
124° to RWY12

3500 X 75

226 Λ

CATEGORY	A	B	C	D
LPV DA	391-1½		350 (400- 1½)	
LNAV/ VNAV DA	414- 1¼		373 (400- 1¼)	
LNAV MDA	540-1	499 (500-1)	540 -1¾	499 (500-1¾)
CIRCLING	560-1 518 (600-1)	580-1 538 (600-1)	660-1¾ 618 (700-1¾)	760-2¼ 718 (800-2¼)

REIL Rwy 30
MIRL Rwy 12-30 **0**



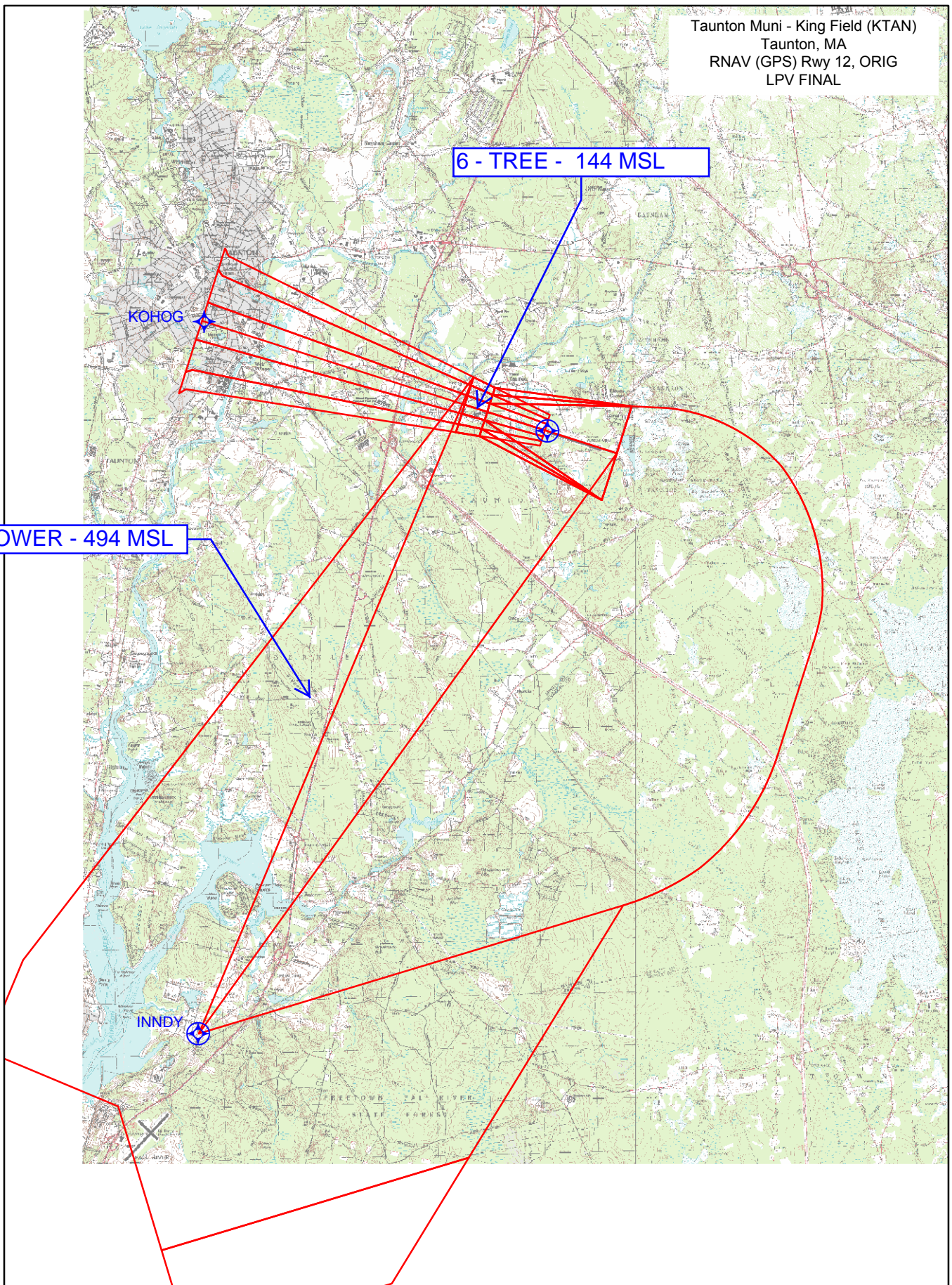
Taunton Muni - King Field (KTAN)
Taunton, MA
RNAV (GPS) Rwy 12, ORIG
LPV FINAL

6 - TREE - 144 MSL

KOHOG

10 - TOWER - 494 MSL

INNDY



Taunton Muni - King Field (KTAN)
Taunton, MA
RNAV (GPS) Rwy 12, ORIG
LNAV/VNAV FINAL

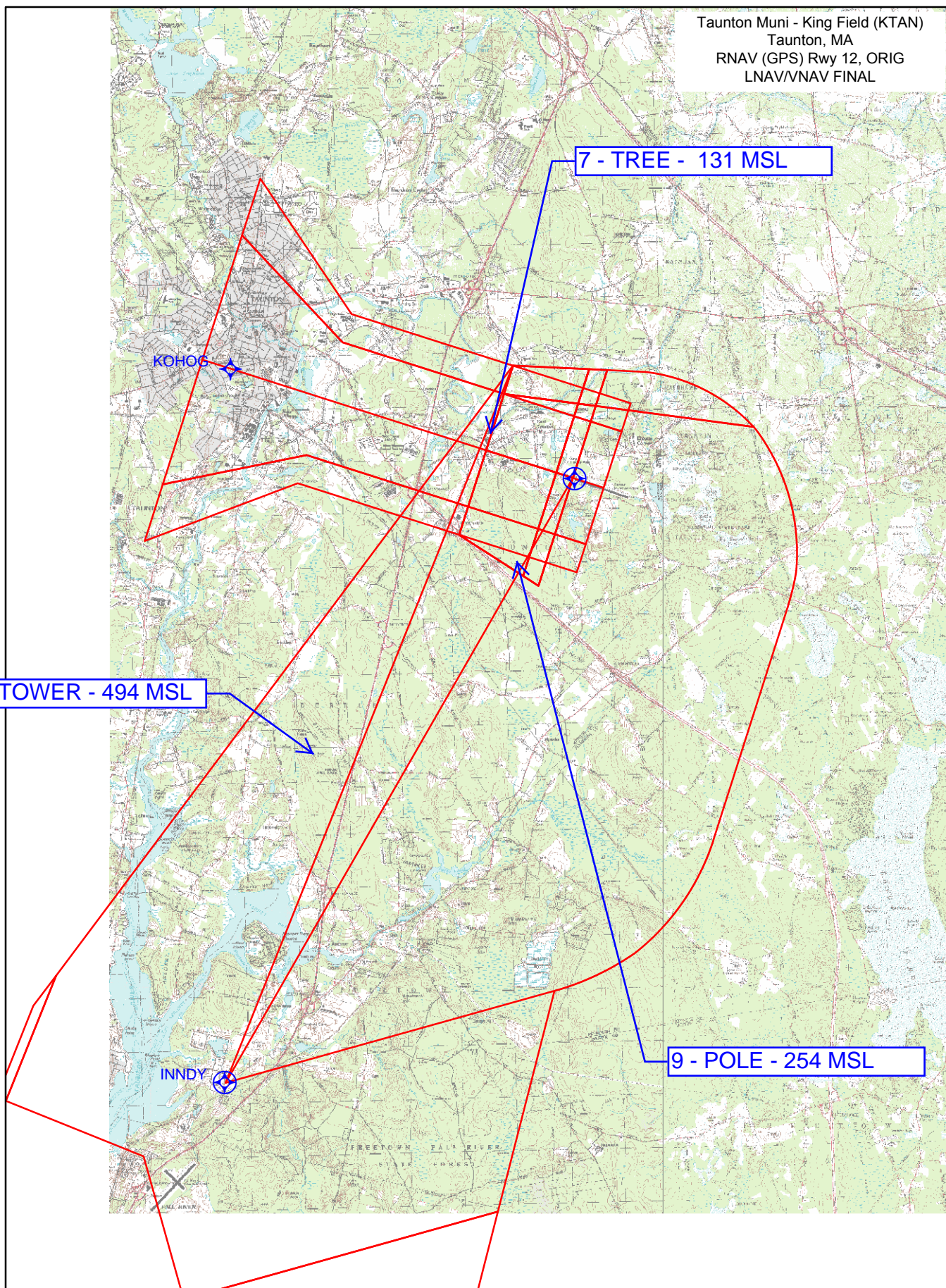
7 - TREE - 131 MSL

KOHOG

10 - TOWER - 494 MSL

INNDY

9 - POLE - 254 MSL



Taunton Muni - King Field (KTAN)
Taunton, MA
RNAV (GPS) Rwy 12, ORIG
LNAV FINAL

12 - SPIRE - 261 MSL

14 - TOWER - 409 MSL

8 - TOWER - 232 MSL

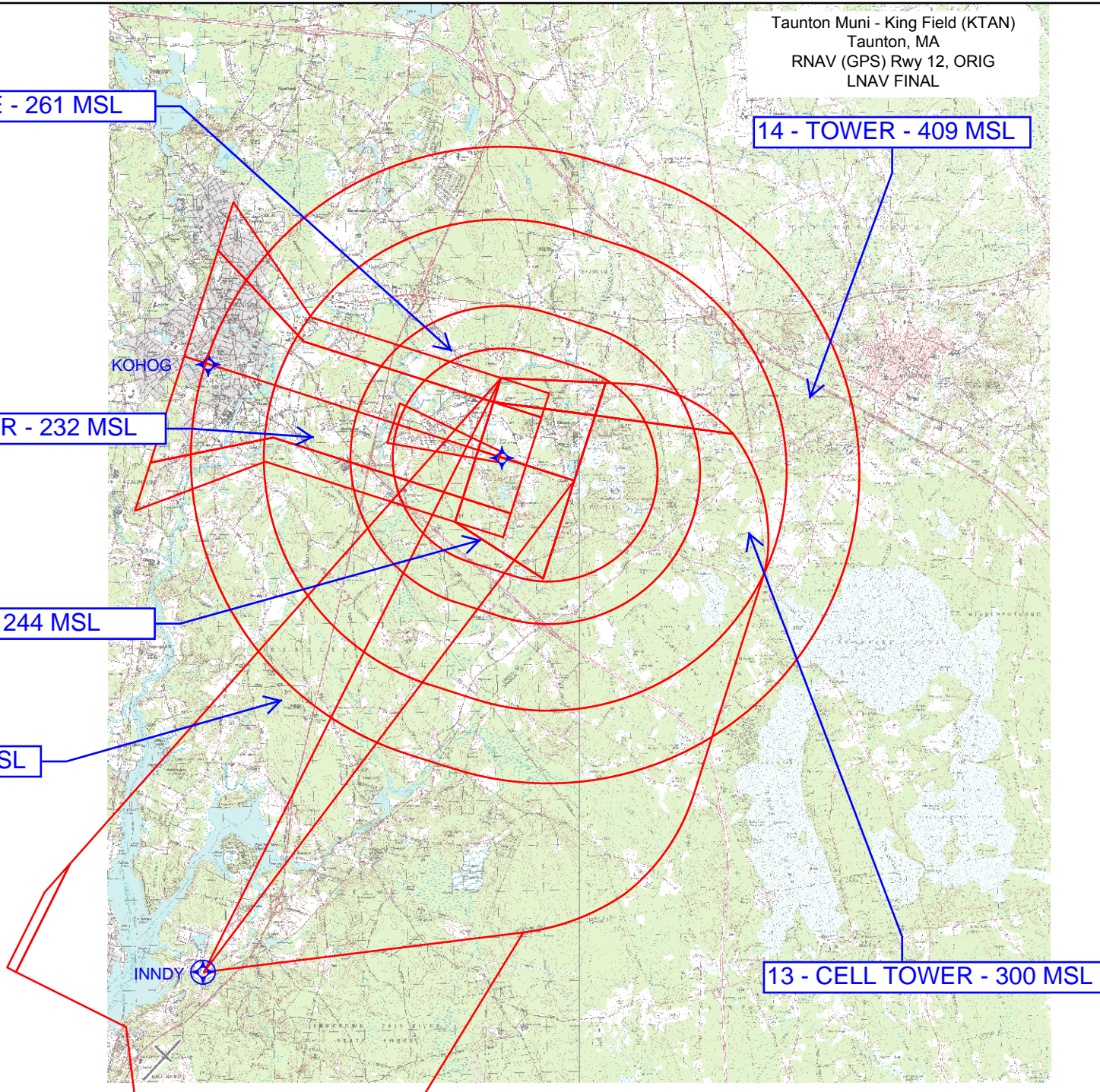
9 - POLE - 244 MSL

10 - TOWER - 494 MSL

13 - CELL TOWER - 300 MSL

KOHOG

INNDY



TERMINAL AIRSPACE DATA REQUIREMENTS

CITY:

STATE:

AIRPORT NAME:

ID:

PROCEDURE:

AMDT:

DOCKET # :

(96-AXX-X/Required/Not Required)

ALL DIST TO 1/100 NM; ELEV TO NEAREST FT; COORD TO 1/100 SEC; DEG TO 1/100 DG.

1. Distance from _____ to 1000' point _____

(Enter THLD, FAF, ARP, FACILITY, as appropriate)

2. Width of _____ segment at 1000' point _____

(Enter appropriate segment , final, intermediate, etc.)

3. True Course of _____ segment containing 1000' point _____

4. High Terrain in _____ segment containing 1000' point _____

5. Distance from _____ to 1500' point _____

(If 1500' point in PT maneuvering area or holding pattern note in remarks)

6. Width of _____ segment at 1500' point _____

7. True Course of _____ segment containing 1500' point _____

8. High Terrain in _____ segment containing 1500' point _____

9. Threshold Coordinates (if straight-in) ... _____ / _____

10. ARP Coordinates _____ / _____

11. Runway Approach End and distance furthest from ARP.....RWY _____

Distance _____ NM

12. FAF Coordinates _____ / _____

(Click to Select)

REMARKS: APPROACH/DRAWING ATTACHED.