

Flight Procedure Tracking Form		Action: FLIGHT CHECK	Task Type: STAR	Date Open: 09/03/2015	Task #: 2014120815122501004	Request #: 20141208151225
Procedure: STAR OOSHN (RNAV) FOUR BOSTON MA KBOS			Airport ID: KBOS	Airport: GENERAL EDWARD LAWRENCE LOGAN INTL		Reimbursable #: NO
City: BOSTON	ST: MA	GPS #:		Estimated Chart Date: 05/26/2016		FICO #:
Fac ID: N/A		Fac. Type:			Specialist: Jeff Anderson	
Procedure Review						
	Rec'd	Rel'd	Full Name		Comments	
Lead:	12/01/2015					
QA:						
Liaison:						
Procedure Comments:			ENROUTE	Remark Type: INFORMATION		
CONTACT: JULIE MORGAN, AJV-352 LEAD, 405.954-8586						

QUALITY
15
CHECKED

OOSH4 FOUR ARRIVAL (RNAV) Transition Routes

BOSTON, MASSACHUSETTS

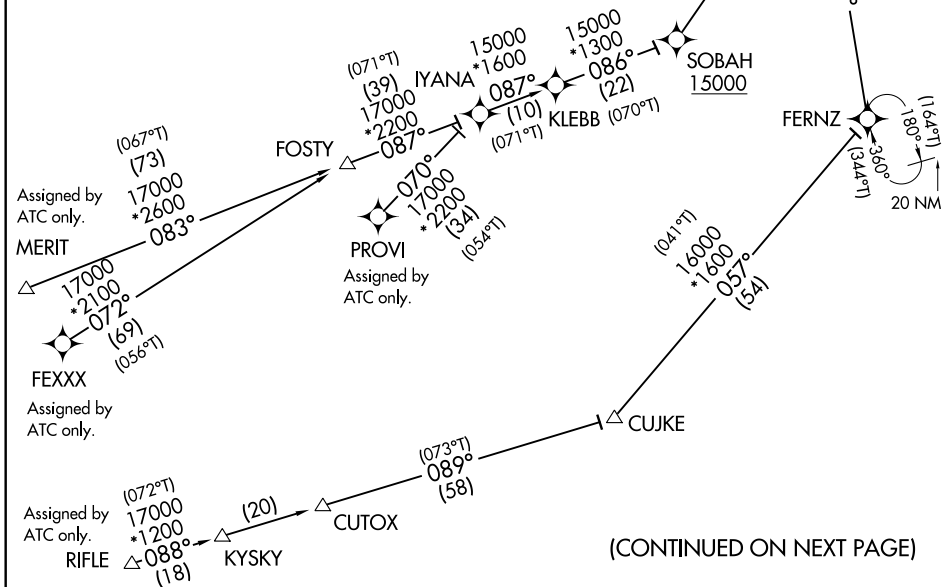
BOSTON APP COM
120.6 263.1
ATIS
135.0

NOTE: Radar required.
NOTE: RNAV 1.
NOTE: DME/DME/IRU or GPS required.
NOTE: Turbojet aircraft only.
NOTE: FEXXX, MERIT, PROVI, RIFLE transitions assigned by ATC only.

PROTOTYPE-NOT FOR NAVIGATION

See following
page for arrival
routes

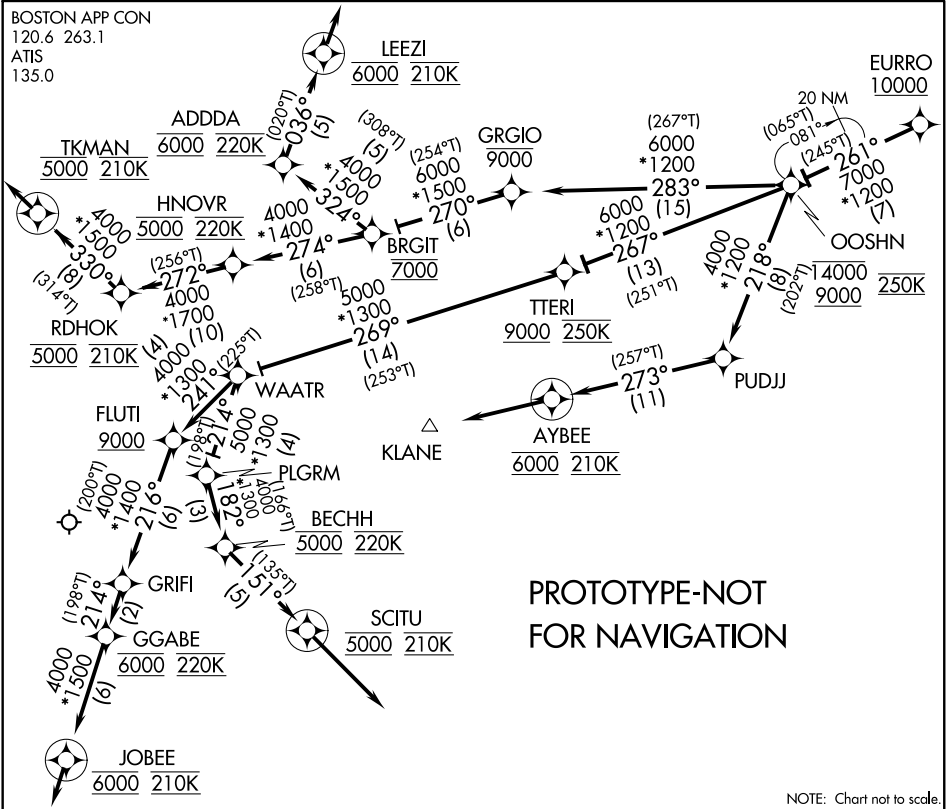
AJJAY TRANSITION (AJJAY.OOSH4)
FERNZ TRANSITION (FERNZ.OOSH4)
FEXXX TRANSITION (FEXXX.OOSH4): (Assigned by ATC only)
KENNEBUNK TRANSITION (ENE.OOSH4)
MERIT TRANSITION (MERIT.OOSH4): (Assigned by ATC only)
PROVI TRANSITION (PROVI.OOSH4): (Assigned by ATC only)
RIFLE TRANSITION (RIFLE.OOSH4): (Assigned by ATC only)



NOTE: Chart not to scale.

OOSH4 FOUR ARRIVAL (RNAV) Transition Routes

BOSTON, MASSACHUSETTS



ARRIVAL ROUTE DESCRIPTION

From EURO on track 261° to cross OOSHNA between 9000 and 14000 and at 250K.

Landing Rwy 4L/R: From OOSHNA on track 267° to cross TTTRI at or above 9000 and at 250K, then on track 269° to WAATR, then on track 241° to cross FLUTI at or above 9000, then on track 216° to GRIFI, then on track 214° to cross GGABE at 6000 and at 220K, then on track 214° to cross JOBEE at 6000 and at 210K, then on track 214°. Expect radar vectors to final approach course.

Landing Rwy 15R: From OOSHNA on track 283° cross GRGIO at or below 9000, then on track 270° to cross BRGIT at 7000, then on track 274° to cross HNOVR at 5000 and at 220K, then on track 272° to cross RDHOK at 5000 and at 210K, then on track 330° to cross TKMAN at 5000 and at 210K, then on track 330°. Expect radar vectors to final approach course.

Landing Rwy 22L/R: From OOSHNA on track 283° to cross GRGIO at or below 9000, then on track 270° to cross BRGIT at 7000, then on track 324° to cross ADDDA at 6000 and at 220K, then on track 036° to cross LEEZI at 6000 and at 210K, then on track 036°. Expect radar vectors to final approach course.

Landing Rwy 27: From OOSHNA on track 218° to PUDJJ, then on track 273° to cross AYBEE at 6000 and at 210K, then on track 273°. Expect radar vectors to final approach course.

Landing Rwy 32, 33L: From OOSHNA on track 267° to cross TTTRI at or above 9000 at at 250K, then on track 269° to WAATR, then on track 214° to PLGRM, then on track 182° to cross BECHH at 5000 and at 220K, then on track 151° to cross SCITU at 5000 and at 210K, then on track 151°. Expect radar vectors to final approach course.

ST-58 (FAA)

GENERAL EDWARD LAWRENCE LOGAN INTL (BOS)

OOSHN THREE ARRIVAL (RNAV) Transition Routes

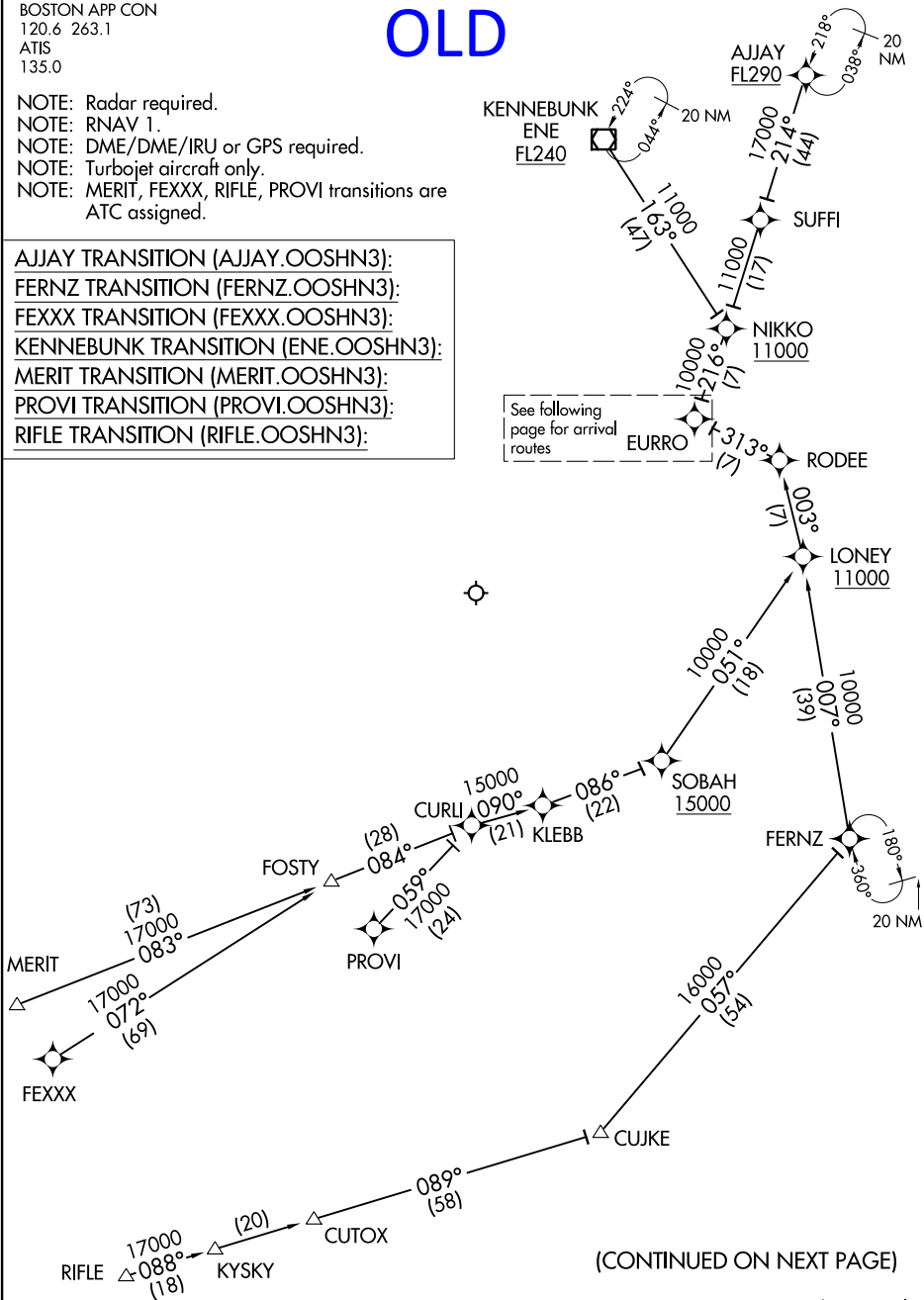
BOSTON, MASSACHUSETTS

BOSTON APP CON
120.6 263.1
ATIS
135.0

NOTE: Radar required.
NOTE: RNAV 1.
NOTE: DME/DME/IRU or GPS required.
NOTE: Turbojet aircraft only.
NOTE: MERIT, FEXXX, RIFLE, PROVI transitions are
ATC assigned.

AJJAY TRANSITION (AJJAY.OOSHNN3):
FERNZ TRANSITION (FERNZ.OOSHNN3):
FEXXX TRANSITION (FEXXX.OOSHNN3):
KENNEBUNK TRANSITION (ENE.OOSHNN3):
MERIT TRANSITION (MERIT.OOSHNN3):
PROVI TRANSITION (PROVI.OOSHNN3):
RIFLE TRANSITION (RIFLE.OOSHNN3):

OLD



(CONTINUED ON NEXT PAGE)

NOTE: Chart not to scale.

OOSHN THREE ARRIVAL (RNAV) Transition Routes

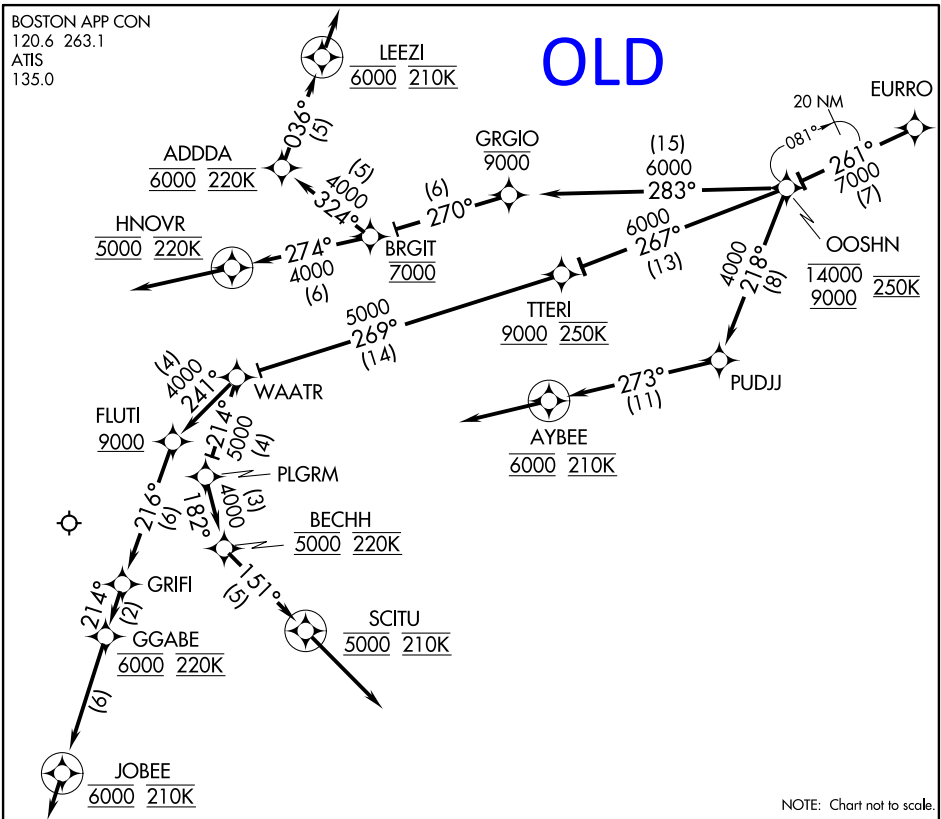
BOSTON, MASSACHUSETTS

(EURRO.OOSH N3) 14317

GENERAL EDWARD LAWRENCE LOGAN INTL (BOS)

NE-1, 12 NOV 2015 to 10 DEC 2015

NE-1, 12 NOV 2015 to 10 DEC 2015



ARRIVAL ROUTE DESCRIPTION

From over EURRO on track 261° to cross OOSH3 between 9000 and 14000 and at 250K.

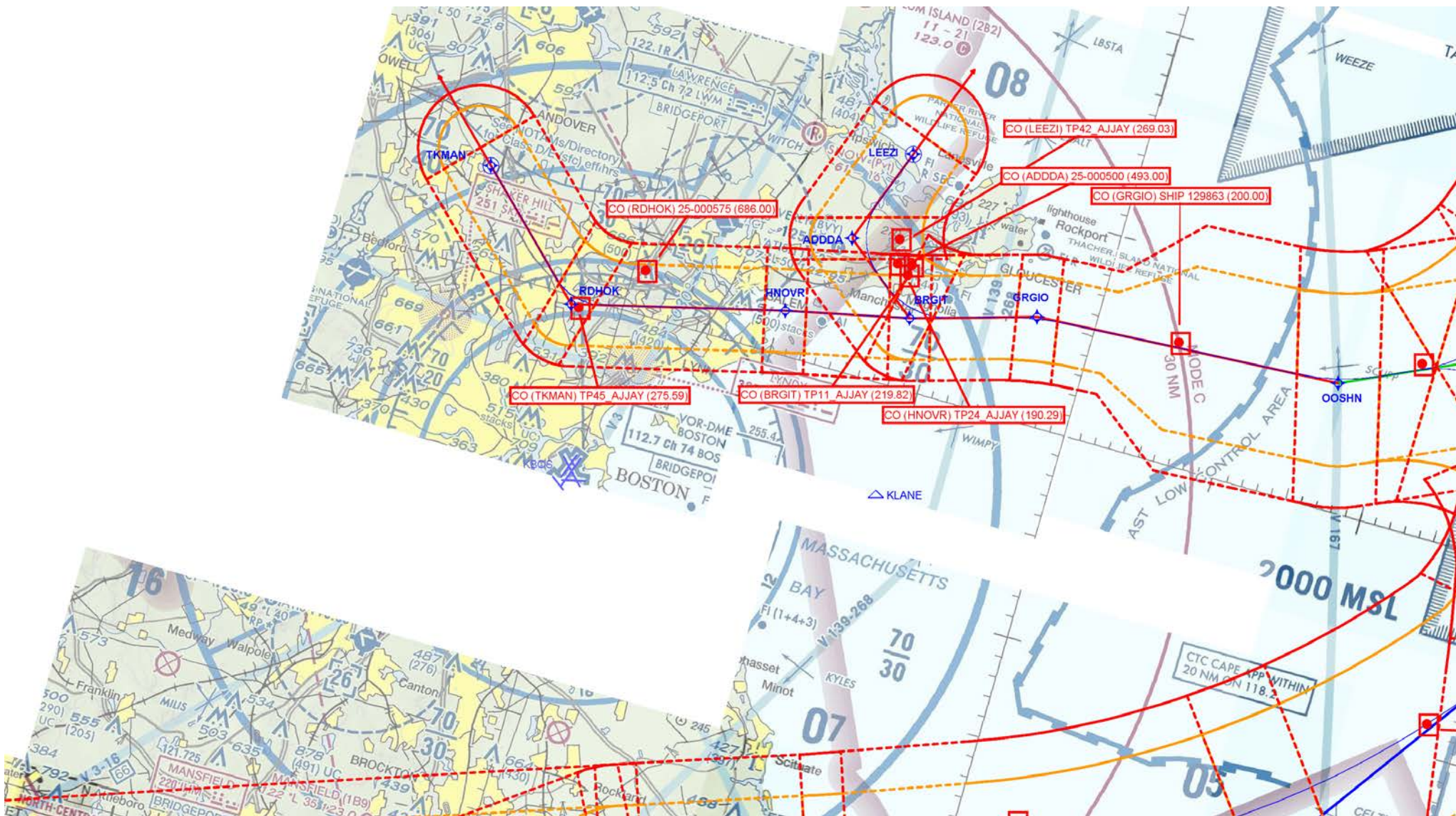
Landing Rws 4L/R: From OOSH3 on track 267° to cross TTER1 at or above 9000 and at 250K, then on track 269° to WAATR, then on track 241° to cross FLUTI at or above 9000, then on track 216° to GRIFI, then on track 214° to cross GGABE at 6000 and at 220K, then on track 214° to cross JOBEE at 6000 and at 210K, then on track 214°. Expect radar vectors to final approach course.

Landing Rwy 15R: From OOSH3 on track 283° cross GRGIO at or below 9000, then on track 270° to cross BRGIT at 7000, then on track 274° to cross HNOVR at 5000 and at 220K, then on track 274°. Expect radar vectors to final approach course.

Landing Rws 22L/R: From OOSH3 on track 283° to cross GRGIO at or below 9000, then on track 270° to cross BRGIT at 7000, then on track 324° to cross ADDDA at 6000 and at 220K, then on track 036° to cross LEEZI at 6000 and at 210K, then on track 036°. Expect radar vectors to final approach course.

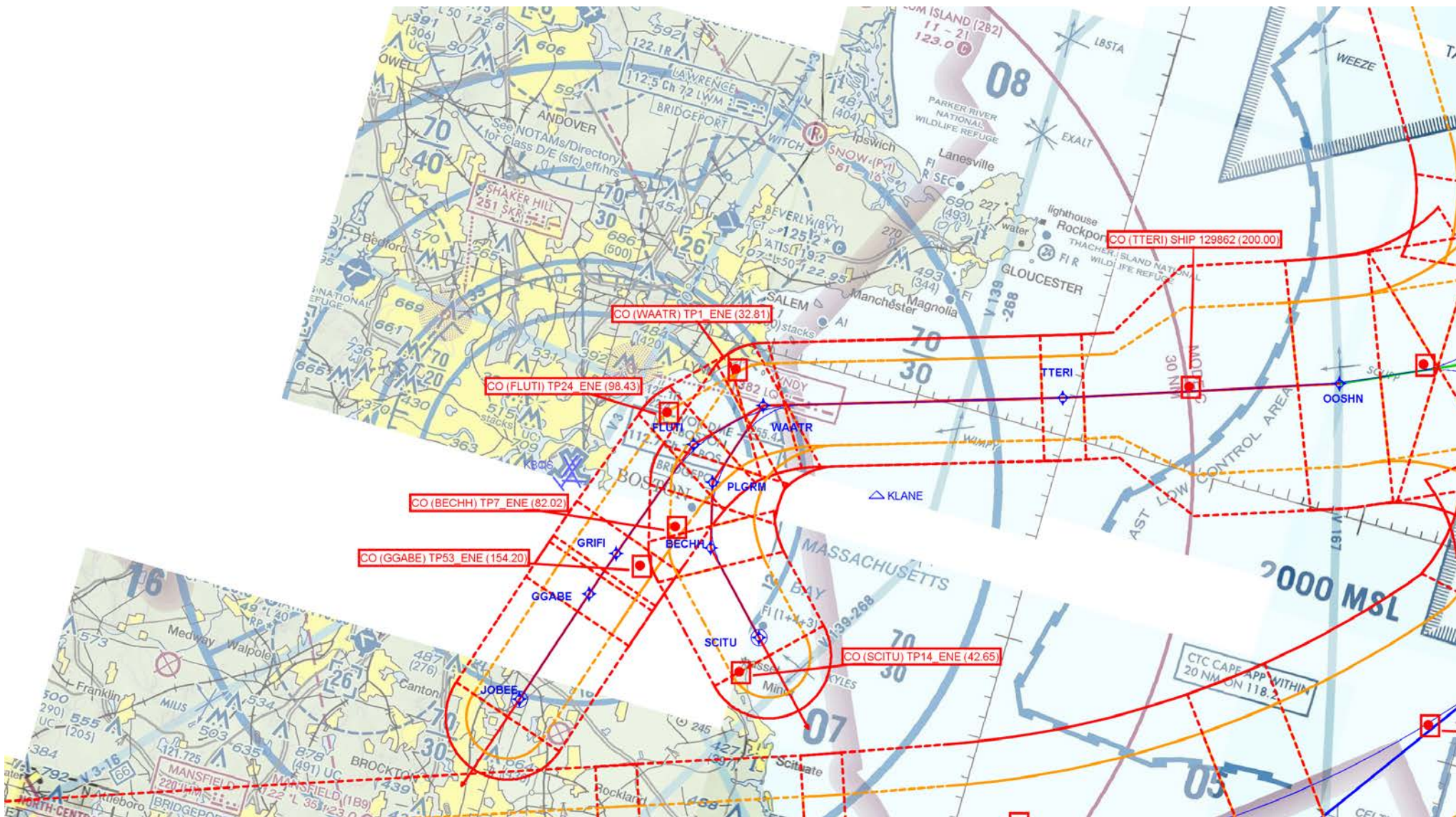
Landing Rwy 27: From OOSH3 on track 218° to PUDJJ, then on track 273° to cross AYBEE at 6000 and at 210K, then on track 273°. Expect radar vectors to final approach course.

Landing Rws 32, 33L: From OOSH3 on track 267° to cross TTER1 at or above 9000 at at 250K, then on track 269° to WAATR, then on track 214° to PLGRM, then on track 182° to cross BECHH at 5000 and at 220K, then on track 151° to cross SCITU at 5000 and at 210K, then on track 151°. Expect radar vectors to final approach course.



1 of 11

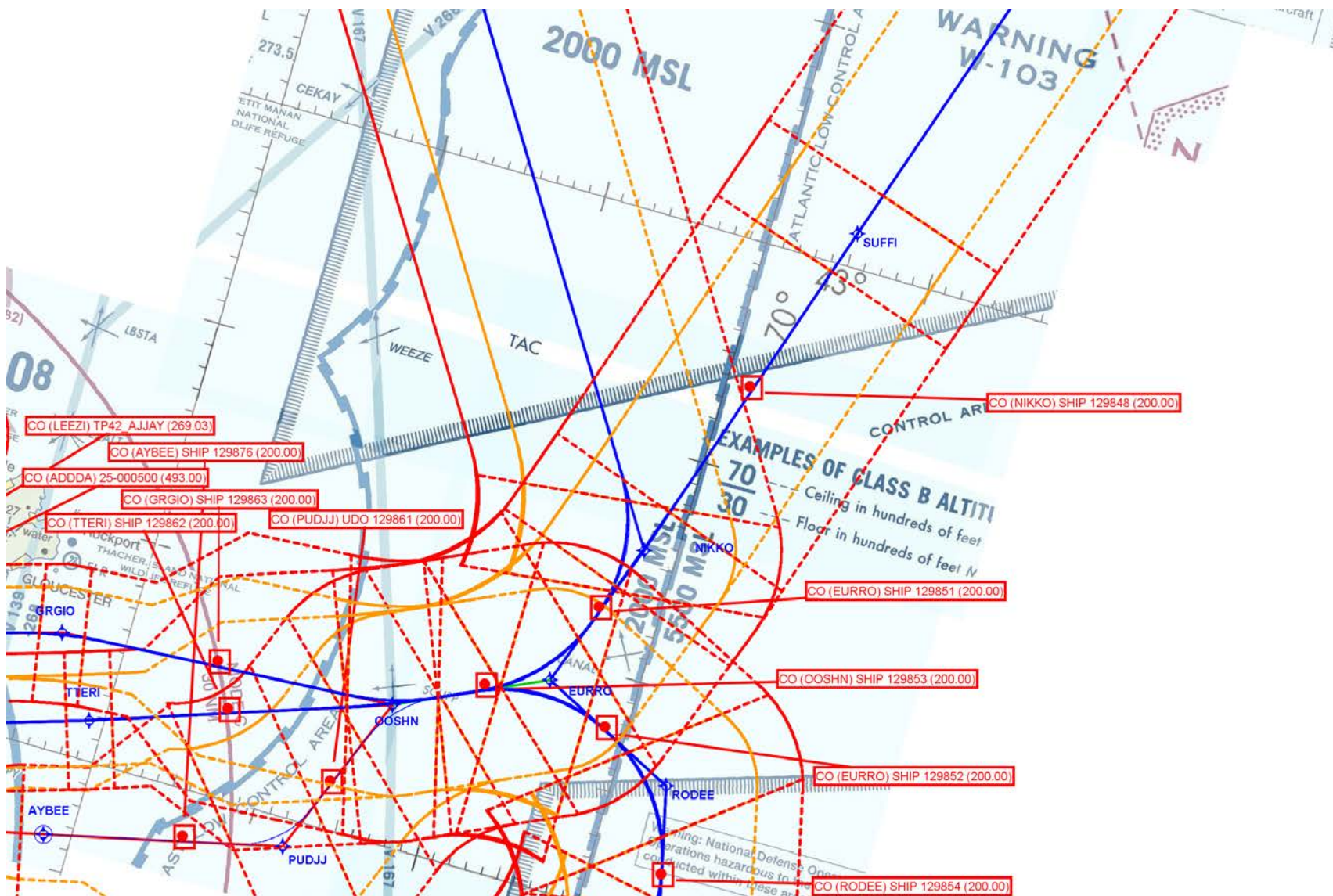
OOSH (RNAV)



2 of 11

OOSH (RNAV)

Generated 11/06/2015 02:00 PM by: TARGETS: 5.0.4.1; WGS84: 1.1.15 (01/05/15); Common RS: 1.4.0 (01/26/15); RNAV STAR RS: 1.5.2 (05/21/15)



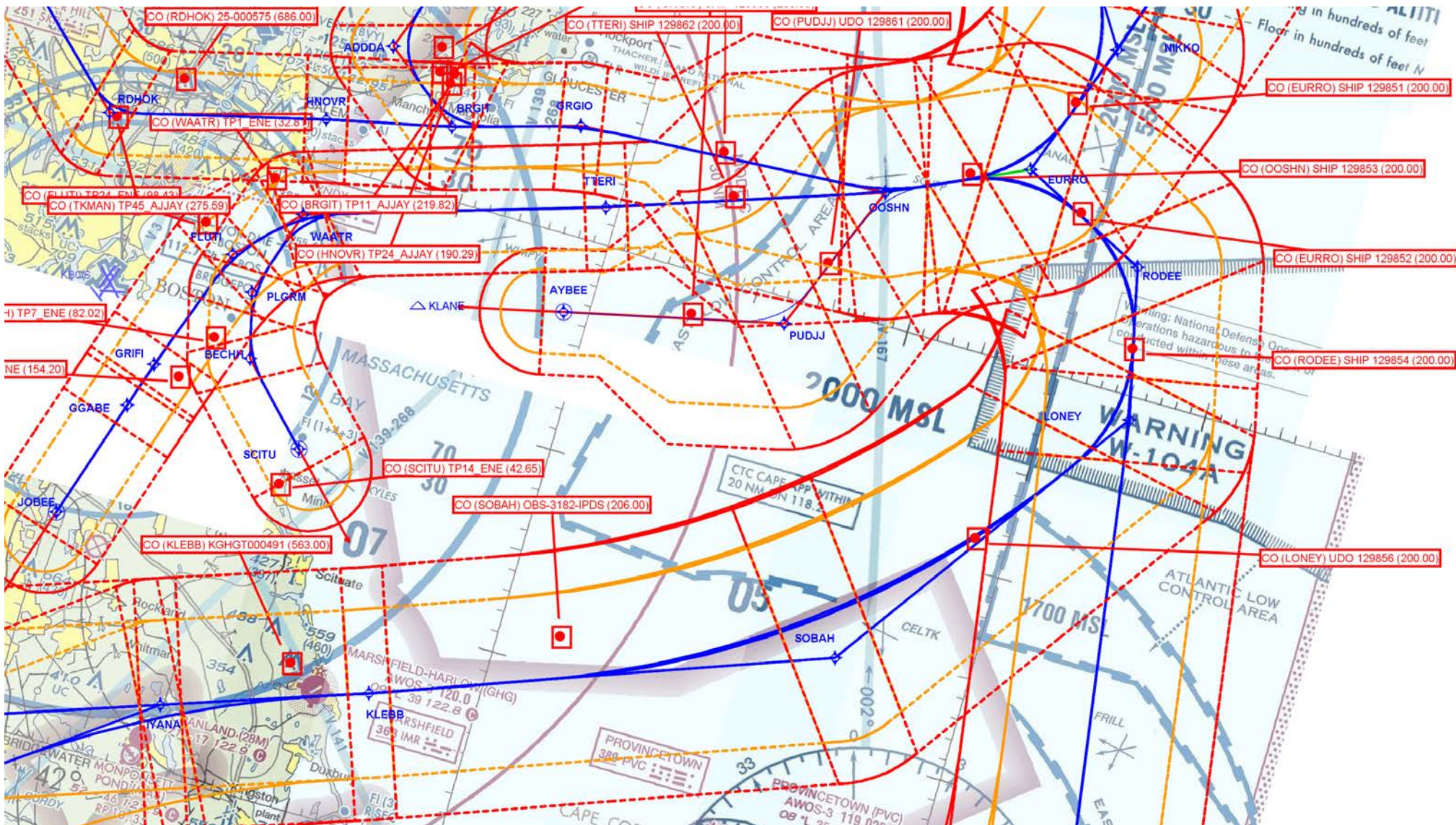
4 of 11

OOSHN (RNAV)



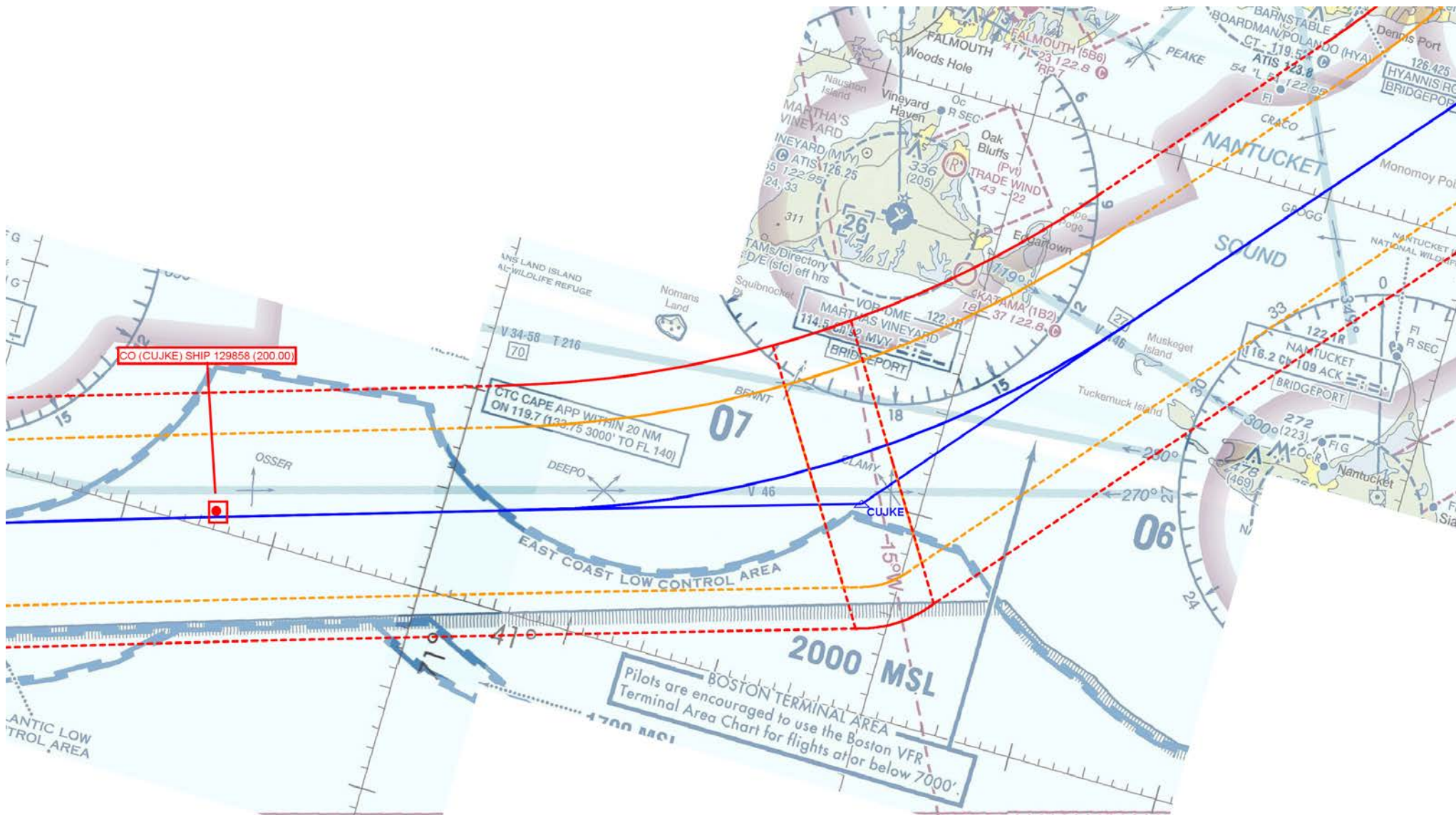
5 of 11

OOSH (RNAV)



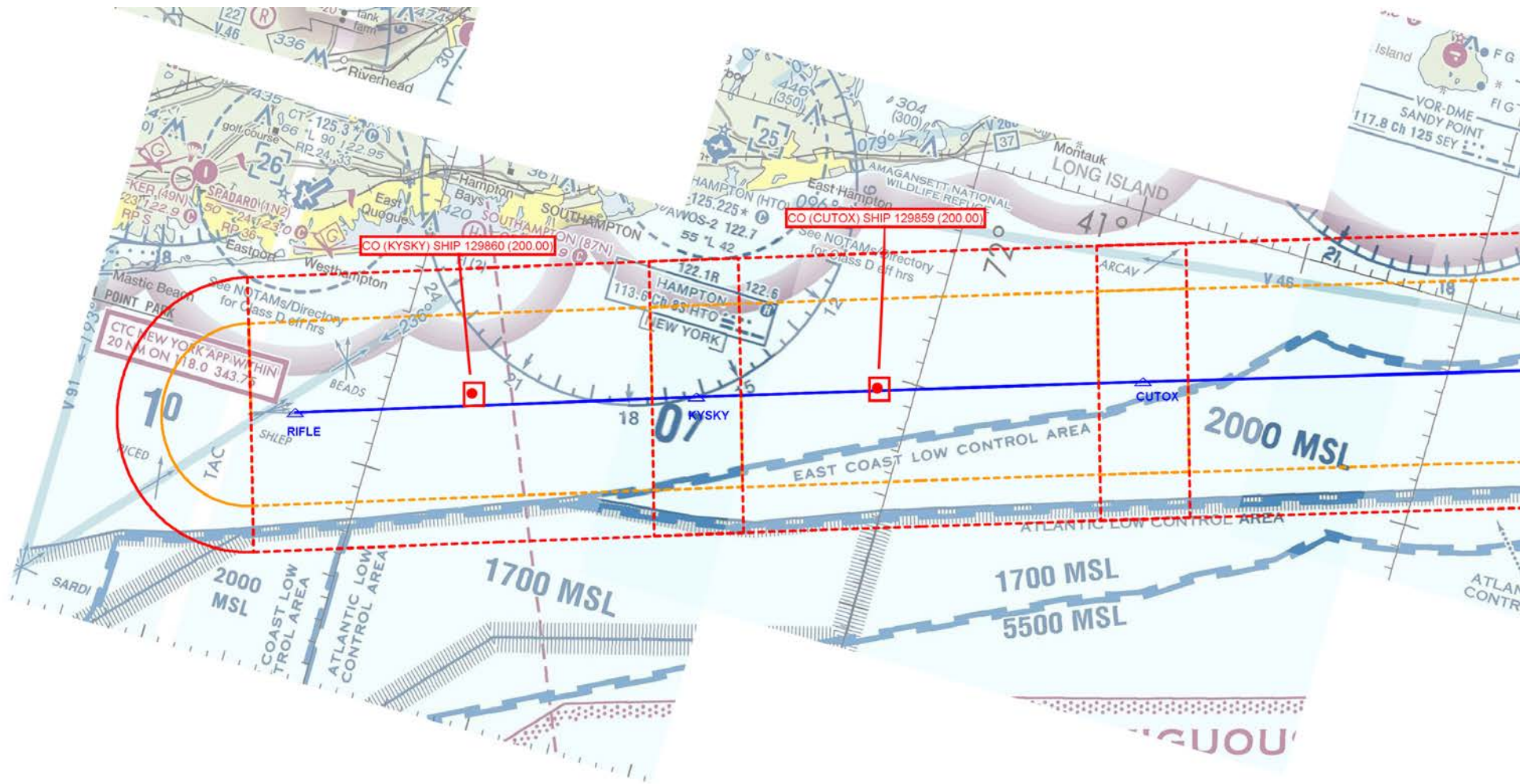
6 of 11

OOSHN (RNAV)



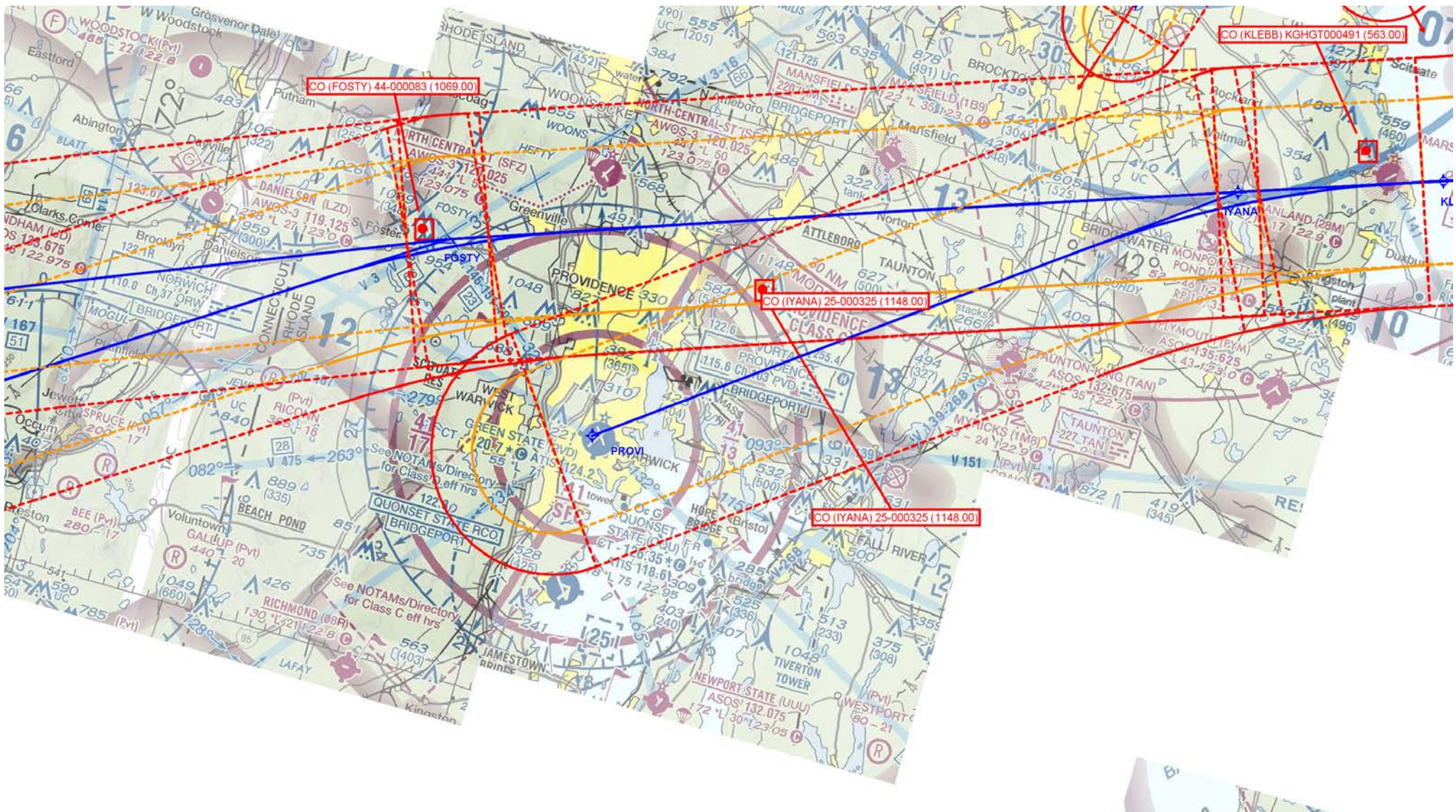
8 of 11

OOSHN (RNAV)



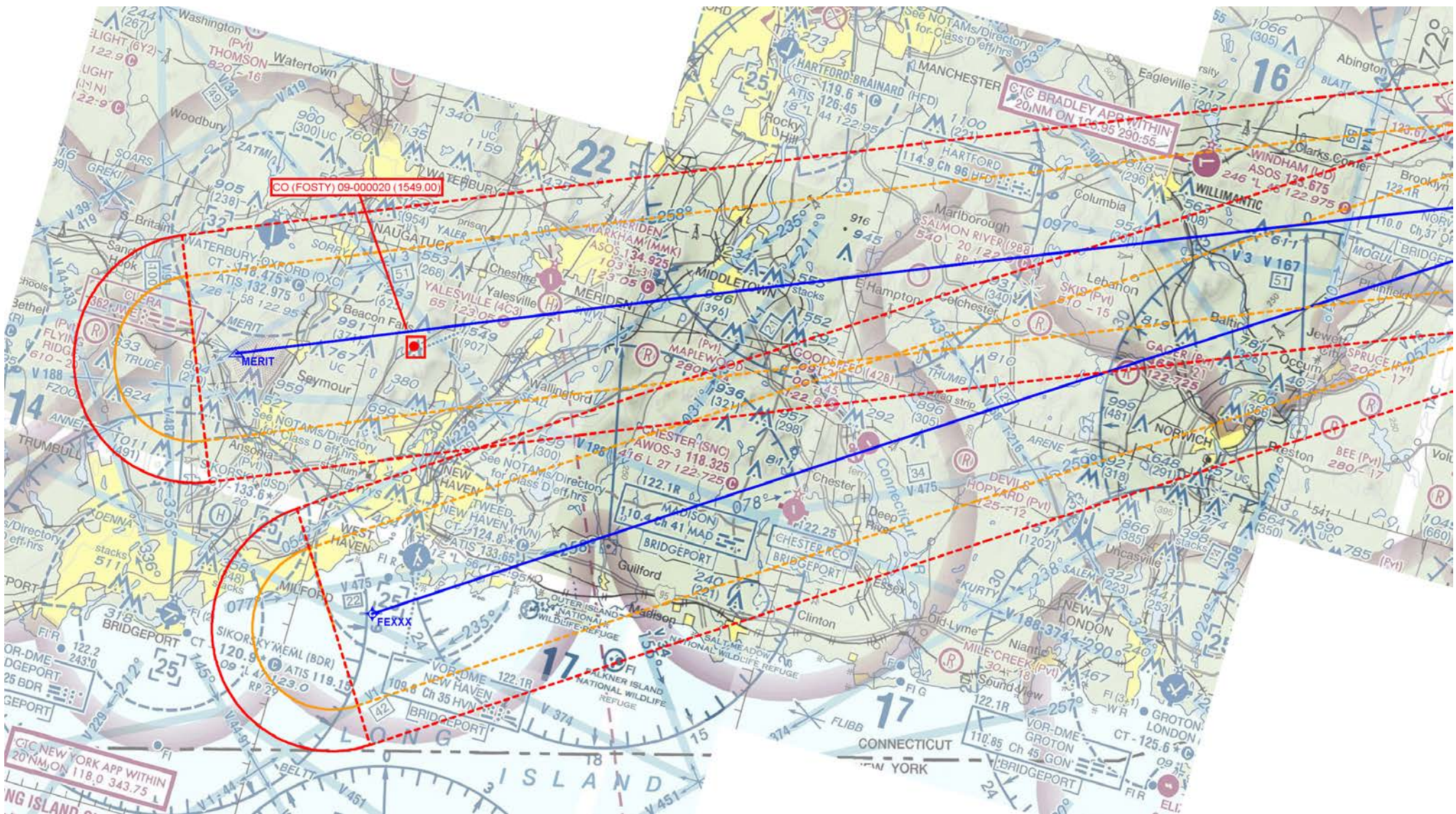
9 of 11

OOSHN (RNAV)



10 of 11

OOSHN (RNAV)



11 of 11

OOSHN (RNAV)